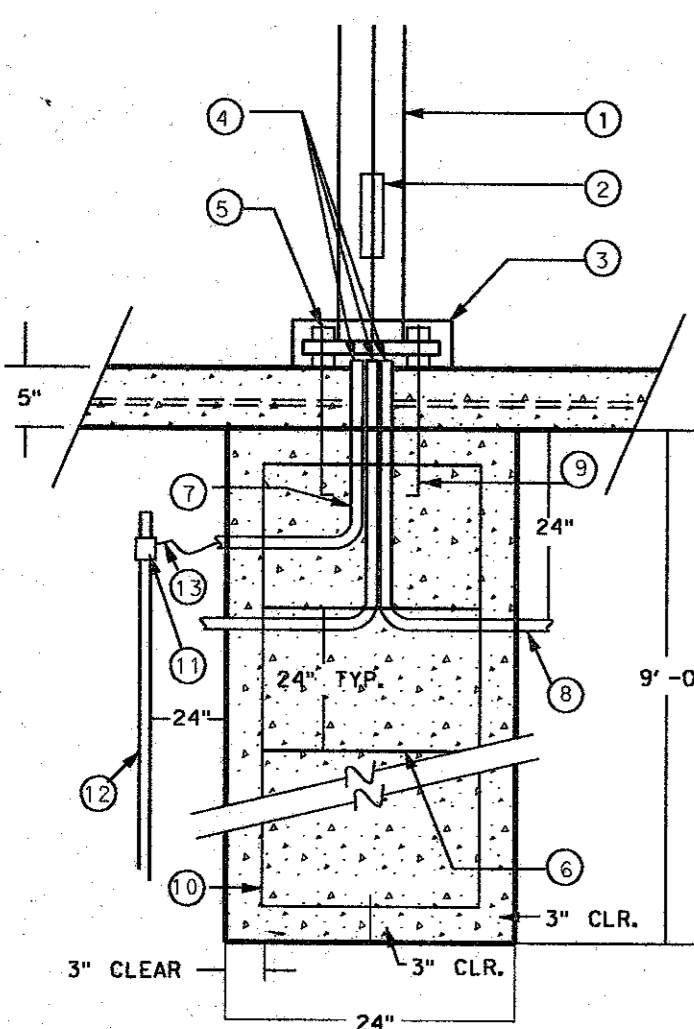
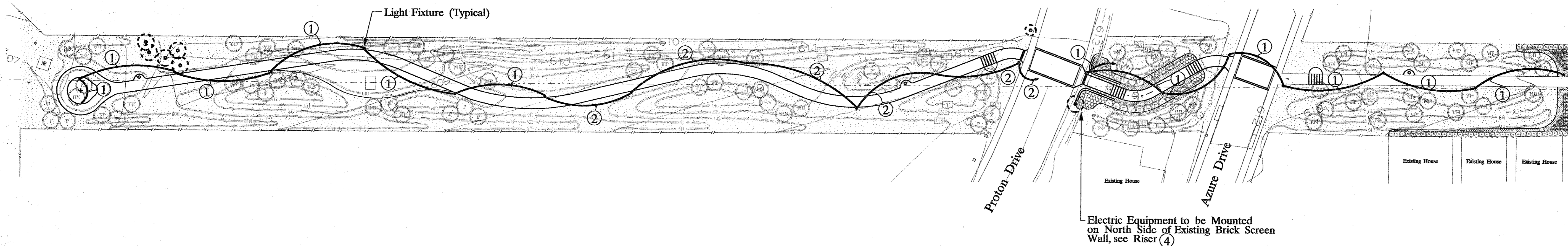


GENERAL NOTES:

- 1. All work shall be in conformance with latest edition of the National Electrical Code and all local codes in effect.
- 2. All conductors shall be copper and installed in conduit.
- 3. Coordinate exact locations of all light fixtures and electrical equipment with Landscape Architect prior to installation.

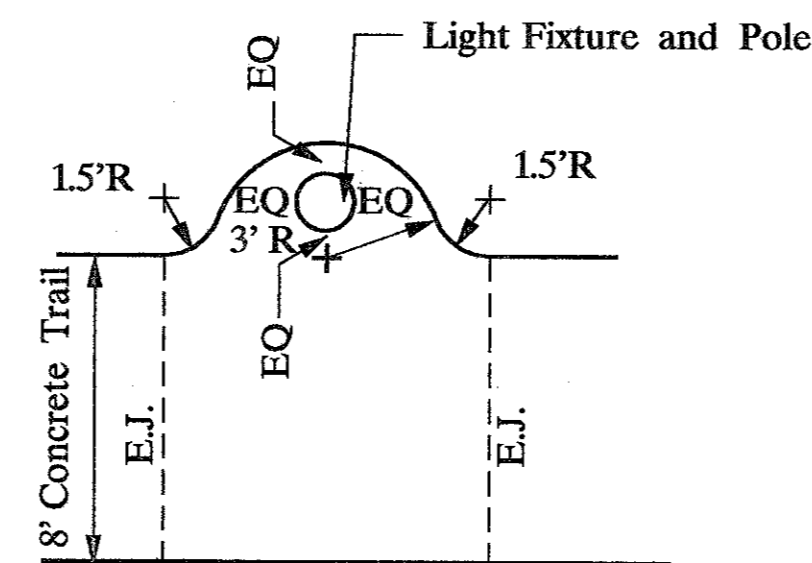
NOTES BY SYMBOL ①

- ① 2- #10, 1- #12 G in 3/4" conduit
- ② 4- #10, 1- #12 G in 3/4" conduit
- ③ Contractor should coordinate with TU Electric on exact location for source of power. Install service as indicated. Approximately 100'.
- ④ Mount all electrical equipment on back of existing wall concealed from view.
- ⑤ 1/2" c. with 2- #12 G to Irrigation Controller Approximately 100'.

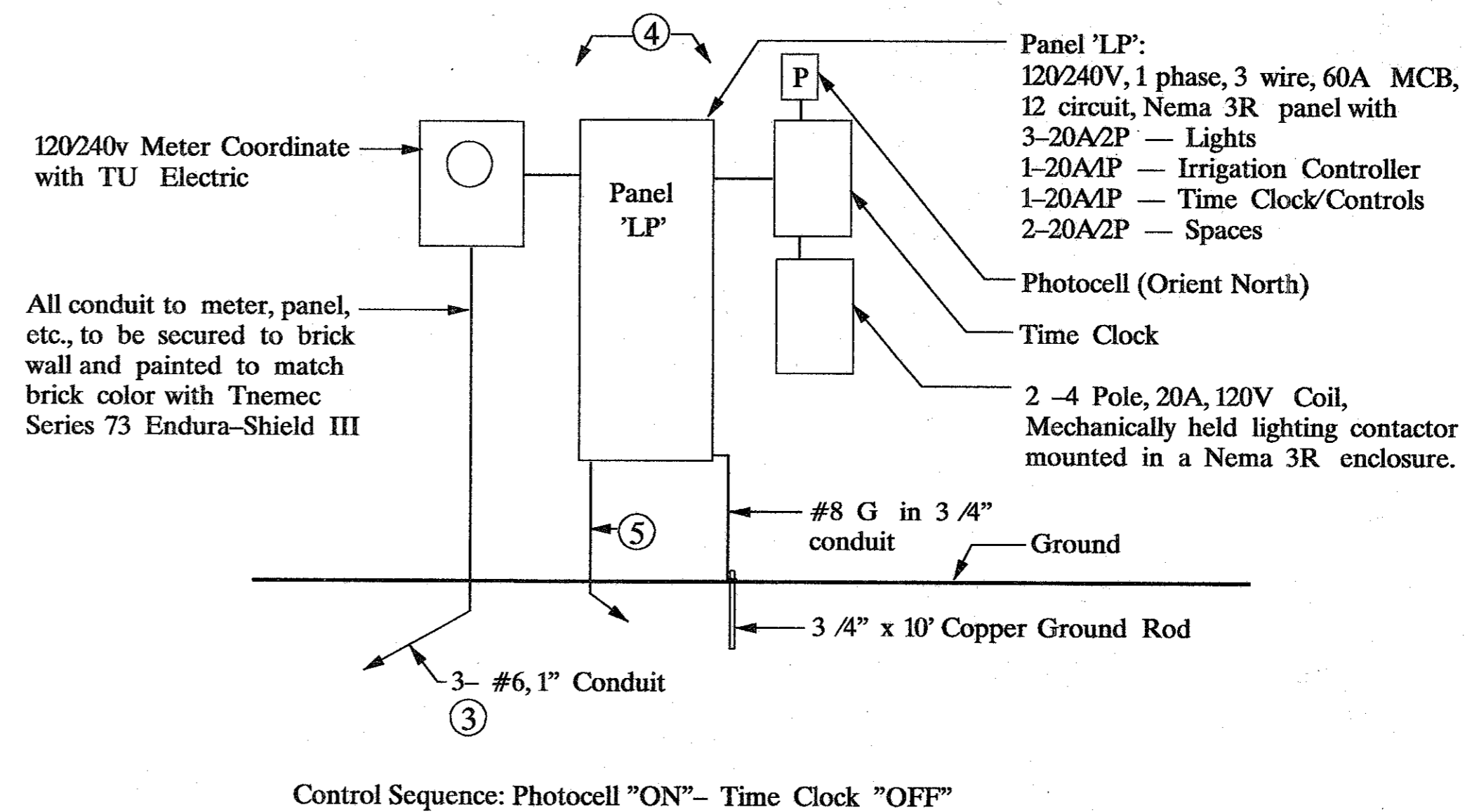


POLE BASE DETAIL
NTS

Light Fixture shall be:
Stern EX-20-A-10-2-N-175 H 240 XA
Executive 20 with 175W MH Lamp
mounted to a KW SSP 12- 4.0- 11- K521-
DM10- BC Pole. Both pole and fixture shall
be painted black.

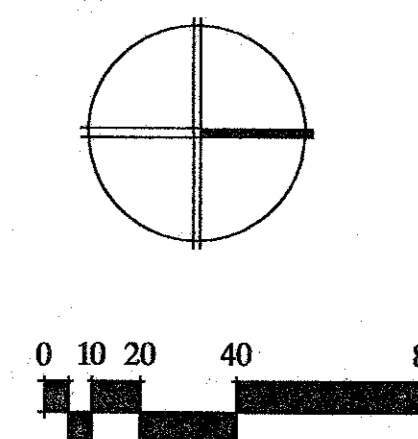


CONCRETE PAD
1/4" = 1'-0"



ELECTRICAL RISER DIAGRAM
NTS

MARSH LANE SECTION ALTERNATE A-5:
Delete Time Clock and Photocell. Add 1/2" conduit
with 2- #12, 1- #12G to Irrigation Controller from
contactor enclosure.



REVISIONS
JOB NUMBER 93324001D
DESIGNED: SLA DRAWN: SLA CHECKED: DLR/LEO
ISSUE DATE August 18, 1994
SHEET NUMBER E-11