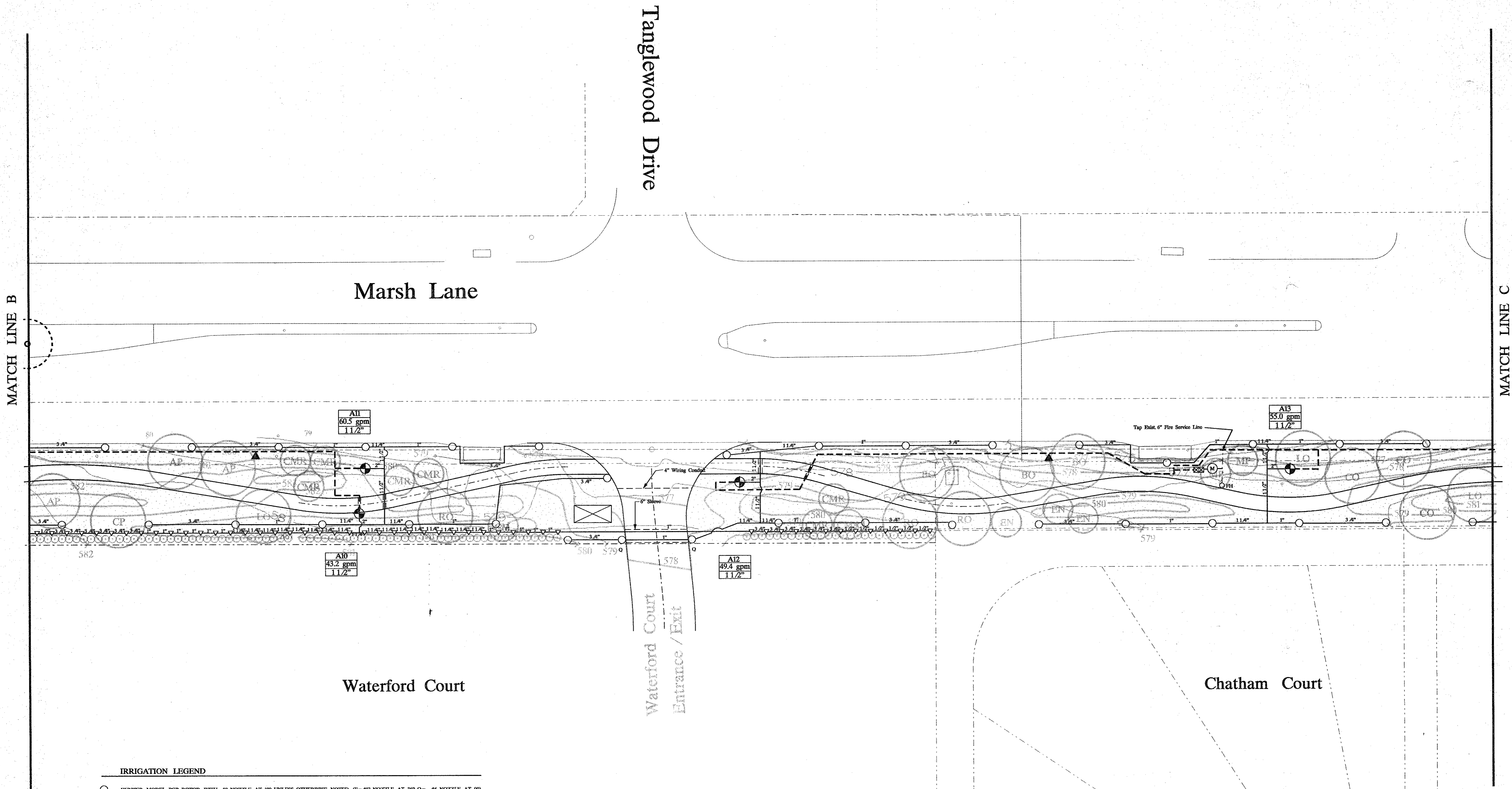
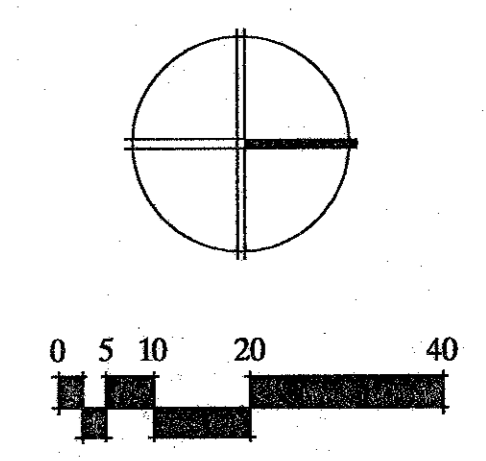


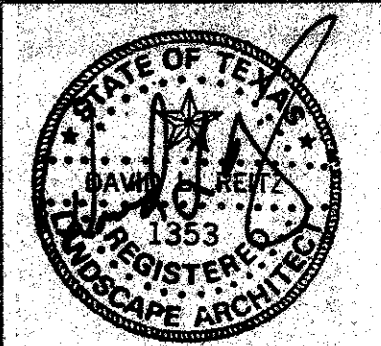
(C) 1993 BY CARTER & BURGESS, INC. ALL RIGHTS RESERVED. THIS DOCUMENT IS THE PROPERTY OF CARTER & BURGESS, INC. AND IS NOT TO BE REPRODUCED OR TRANSMITTED IN ANY FORM OR BY ANY MEANS, ELECTRONIC OR MECHANICAL, INCLUDING PHOTOCOPYING, RECORDING, OR BY ANY INFORMATION STORAGE AND RETRIEVAL SYSTEM. ANY UNAUTHORIZED REPRODUCTION OR TRANSMISSION IS STRICTLY PROHIBITED. THE USER ASSUMES ALL LIABILITY FOR ANY DAMAGE, INCLUDING CONSEQUENTIAL DAMAGES, ARISING FROM THE USE OF THIS DOCUMENT. THE DESIGNER MAKES NO WARRANTY, EXPRESS OR IMPLIED, AS TO THE ACCURACY, COMPLETENESS, OR SUITABILITY OF THE INFORMATION CONTAINED HEREIN. THE USER SHALL INDEMNIFY AND HOLD HARMLESS THE DESIGNER FROM AND AGAINST ALL CLAIMS, DAMAGES, LOSSES, AND EXPENSES, INCLUDING REASONABLE ATTORNEY'S FEES, ARISING FROM OR OUT OF THE USE OF THIS DOCUMENT. THE USER SHALL INDEMNIFY AND HOLD HARMLESS THE DESIGNER FROM AND AGAINST ALL CLAIMS, DAMAGES, LOSSES, AND EXPENSES, INCLUDING REASONABLE ATTORNEY'S FEES, ARISING FROM OR OUT OF THE USE OF THIS DOCUMENT. THE USER SHALL INDEMNIFY AND HOLD HARMLESS THE DESIGNER FROM AND AGAINST ALL CLAIMS, DAMAGES, LOSSES, AND EXPENSES, INCLUDING REASONABLE ATTORNEY'S FEES, ARISING FROM OR OUT OF THE USE OF THIS DOCUMENT.



- IRRIGATION LEGEND**
- HUNTER MODEL POP ROTOR WITH #9 NOZZLE AT 30 UNLESS OTHERWISE NOTED (R=#12 NOZZLE AT 30, Q=#6 NOZZLE AT 30)
  - ⊕ RAINBIRD MODEL 180-PRS-SAM POP-UP SPRAY HEAD WITH 15 SERIES NOZZLE
  - ⊙ RAINBIRD MODEL 182-PRS-SAM POP-UP SPRAY HEAD WITH 15 SERIES NOZZLE
  - ⊙ RAINBIRD 15 SERIES NOZZLE ATOP AN 18" COPPER RISER
  - RAINBIRD MODEL 180-PRS-SAM POP-UP SPRAY HEAD WITH 12 SERIES NOZZLE
  - RAINBIRD MODEL 182-PRS-SAM POP-UP SPRAY HEAD WITH 12 SERIES NOZZLE
  - RAINBIRD 12 SERIES NOZZLE ATOP AN 18" COPPER RISER
  - RAINBIRD MODEL 180-PRS-SAM POP-UP SPRAY HEAD WITH 10 SERIES NOZZLE
  - RAINBIRD MODEL 182-PRS-SAM POP-UP SPRAY HEAD WITH 10 SERIES NOZZLE
  - RAINBIRD 10 SERIES NOZZLE ATOP AN 18" COPPER RISER
  - ▲ RAINBIRD MODEL 180-PRS-SAM POP-UP SPRAY HEAD WITH 8 SERIES NOZZLE
  - ▲ RAINBIRD MODEL 182-PRS-SAM POP-UP SPRAY HEAD WITH 8 SERIES NOZZLE
  - ⊕ RAINBIRD MODEL 180-PRS-SAM POP-UP SPRAY HEAD WITH 15 SST NOZZLE
  - ⊕ RAINBIRD MODEL 180-PRS-SAM POP-UP SPRAY HEAD WITH 17 SST NOZZLE
  - ⊕ RAINBIRD MODEL 182-PRS-SAM POP-UP SPRAY HEAD WITH 15 SST NOZZLE
  - ⊕ RAINBIRD MODEL 182-PRS-SAM POP-UP SPRAY HEAD WITH 15 SERIES EST NOZZLE
  - ⊕ RAINBIRD FIB SERIES VALVE, SIZED AS SHOWN
  - ⊕ 4" GATE VALVE
  - ⊕ 2" FIBCO 805 Y DOUBLE CHECK VALVE ASSEMBLY
  - ⊕ 2" WATER METER
  - ⊕ RAINBIRD 3RC QUICK COUPLER VALVE
  - ⊕ RAINBIRD ISC-SAT-B+SS SERIES, 24 STATION CONTROLLER/FIELD SATELLITE UNIT
  - LATERAL LINE
  - - - 2" MAIN LINE



**Irrigation Plan Area Three**



**LES LACS LINEAR PARK**  
 TOWN OF ADDISON, PARKS & LEISURE SERVICES DEPARTMENT 16801 WESTGROVE ROAD ADDISON, TEXAS 75001 214 / 450-2951  
 7800 HAMBROOK DRIVE SUITE 200 DALLAS, TEXAS 75247 - 9851  
 (214) 638-0645 FAX (214) 638-0447  
**Carter & Burgess**

REVISIONS	
JOB NUMBER	93324001D
DESIGNED	SLA
DRAWN	SLA
CHECKED	DLR/LEO
ISSUE DATE	August 18, 1994
SHEET NUMBER	LI-1.3