

DEVELOPMENT PLANS

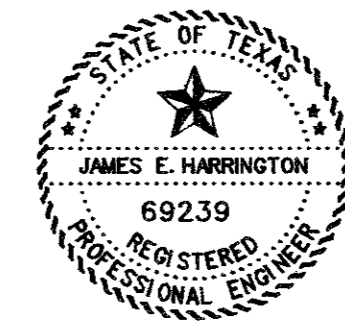
FOR

LES LACS I

TOWN OF ADDISON, TEXAS

GENERAL NOTES:

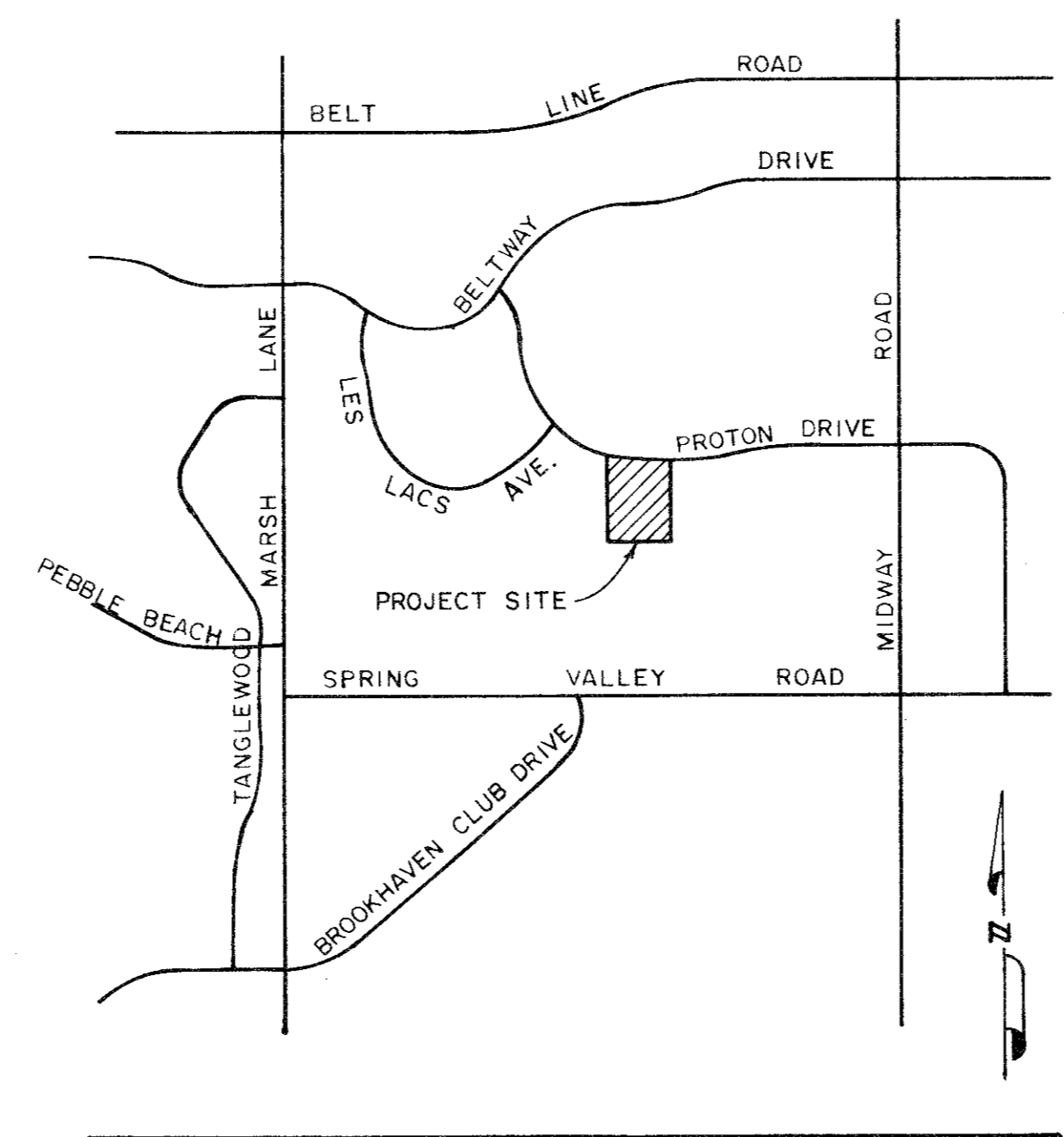
- A. Prior to final acceptance by the Town of Addison:
 - 1) A Texas Registered Professional Engineer shall certify that the project was constructed in accordance with the plans and specifications approved by the Town of Addison.
 - 2) The owner shall provide 1 reproducible set of as-builts (sealed and certified by a Texas Registered Engineer) and 2 blue line sets.
 - 3) A five foot sidewalk shall be installed along Proton Drive.
 - 4) A one year maintenance bond is required for the internal subdivision infrastructure.
 - 5) Contractor shall demonstrate that the water and sanitary sewer systems meet the proper pressure, bacteria, and mandrel tests. In addition, the owner shall provide a VHS format video tape of the sanitary sewer.
- B. Prior to starting construction, the contractor shall contact the utility companies to locate existing facilities. These include but may not be limited to the following:
 - 1) Town of Addison
 - 2) Lone Star Gas
 - 3) Southwestern Bell
 - 4) Storer Cable
 - 5) Planned Cable Systems
 - 7) TU Electric
- C. Prior to beginning construction, the owner or his authorized representative shall convene a Pre-Construction Conference between the Town of Addison, Consulting Engineer, Contractors, utility companies and any other affected parties. Notify Bruce Ellis 450-2847 at least 48 hours prior to the time of the conference and 48 hours prior to beginning of construction.
- D. Any existing pavement, curbs, and/or sidewalks damaged or removed will be repaired by the contractor at their expense.
- E. Lot pins shall be in place during construction and prior to final acceptance. Concrete monuments shall be placed on all boundary corners, block corners, curve points and angle points in public right-of-way. Concrete monuments shall be six (6) inches in diameter and twenty four (24) inches long. A copper pin one-fourth inch in diameter embedded at least three (3) inches in the monument at the exact intersection point the monument. The monuments shall be set at such an elevation that after construction, the top of the monument will be not less than twelve (12) inches below the ground surface.
- F. The contractor shall stamp a 2-inch "S" in the curb at the location of the sewer service line.
- G. At intersections that have valley drainage, the crown of the intersecting streets will culminate in a distance of 40 feet from the intersecting curb line unless otherwise noted.
- H. Temporary or permanent street barricades shall remain at all points of ingress and egress to prevent public use until such streets receive final acceptance.
- I. Contractor shall obtain a right-of-way permit by the Town of Addison for working within the public right-of-way.
- J. During construction, the owner shall provide a qualified geotechnical lab to perform materials testing during the construction, at the request of the Town of Addison.
- K. The contractor shall submit material sheets to the Town of Addison for approval prior to incorporating materials into the job.



The seal appearing on this document was authorized by James E. Harrington, P.E. 69239, on February 19, 1992

I HEREBY CERTIFY THAT THIS PROJECT WAS CONSTRUCTED IN GENERAL CONFORMANCE WITH THE PLANS AND SPECIFICATIONS APPROVED BY THE TOWN OF ADDISON, AND WILL FUNCTION AS DESIGNED.

James E. Harrington P.E. 2-19-92
DATE



VICINITY MAP
NOT TO SCALE

INDEX

- 1 COVER SHEET
- 2 FINAL PLAT
- 3 DRAINAGE AREA MAP
- 4 LEXUS AVENUE
- 5 LAKECREST DRIVE & SHERRY LANE
- 6 WATER & SANITARY SEWER PLAN
- 7 SANITARY SEWER PROFILES
- 8 STORM SEWER PLAN & PROFILE
- 9 PROTON DRIVE TRAFFIC CONTROL PLAN
- 10 GRADING & EROSION CONTROL PLAN
- STANDARD CONSTRUCTION DETAILS
- 11 STREET CROWNS & JOINTS
- 12 SIDEWALKS & RAMPS
- 13 CURB INLETS
- 14 EMBEDMENT DETAILS
- 15 MANHOLES AND CONNECTIONS
- 16 LATERALS AND CLEANOUTS
- 17 FIRE HYDRANTS, PULL BOXES AND VALVES
- 18 THRUST BLOCKS
- 19 TURN LANES AND JOINTS

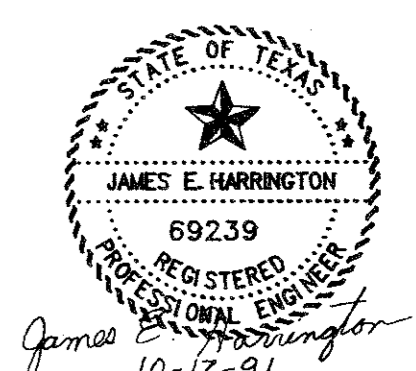
PREPARED FOR
DESIGNER HOMES, INC.

5100 BELTLINE ROAD, #244 ADDISON, TEXAS 75240

CORWIN ENGINEERING, INC. — CONSULTING ENGINEER

3023 ROUTH STREET

DALLAS, TEXAS 75201



The seal appearing on this document was authorized by James E. Harrington, P.E. 69239, on October 17, 1991

AS-BUILT (FEB. 1992)

NO.	PER TOWN COMMENTS	CEI	IO-18-91
	REVISIONS	BY	DATE