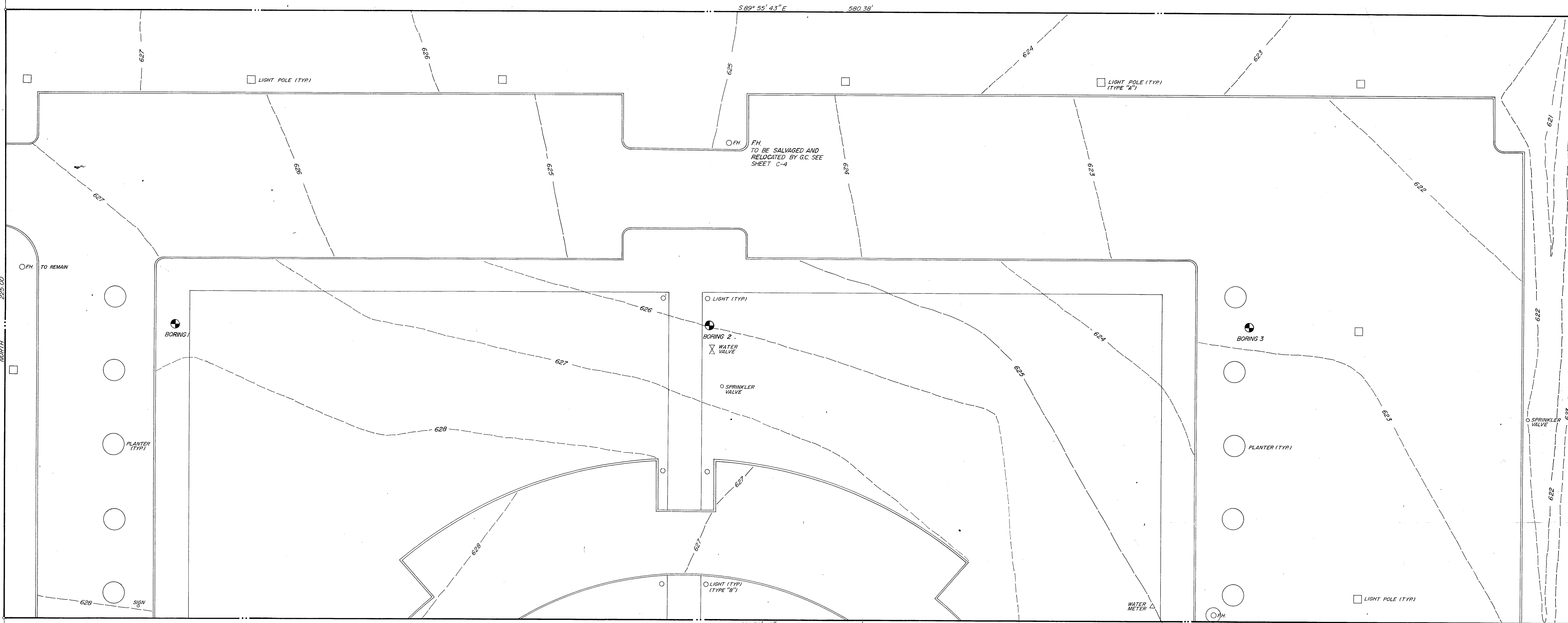


1/16"=1'

ROAD  
HANGAR



FH  
TO BE SALVAGED  
AND RELOCATED  
BY GC. SEE SHEET  
C-4

BENCHMARK  
TTA B/M #5  
CHISEL SQUARE ON CURB RADIUS  
AT FIRST DRIVE ON NORTH SIDE OF  
WELLS SPRINGS ROAD, 150' EAST  
OF LIBERTY PLAZA BLDG.  
300' WEST OF DALLAS HWY  
ELEV. 626.24

NOTE  
TOPOGRAPHIC INFORMATION FROM  
BOWES & ASSOC. DRAWING REVISED  
4-9-84  
DRAWING PREPARED FROM FILMWORK  
FURNISHED BY ARCHITECT.

TYPE I CONST, B-2 OCC.

**GINN, INC.**  
CONSULTING ENGINEERS  
DALLAS, TEXAS  
DATE RECEIVED 9-4-84  
DATE REVIEWED 9-18-84  
BY: [Signature]

| INSPECTION REVIEW | HOLD | APPROVED           | REVIEWED BY |
|-------------------|------|--------------------|-------------|
| BUILDING          |      | 8-30-84            | CP          |
| PLUMBING          |      | 9/21/84            | J.C.B.      |
| ELECTRICAL        |      | OK per [Signature] |             |

- FIRE EXTINGUISHERS:  
Minimum rating 2A 10BC  
Maximum travel distance 75'  
Minimum one per 6,000 sq ft

- No sprinkler omissions
- Alarm system to be monitored at a constantly attended location
- Fire lanes to be to A.F.D.'s specs (attached)
- Fire hydrants 300' O.C.

SEE ATTACHED NOTE

| DEPARTMENTAL REVIEW | HOLD | APPROVED | REVIEWED BY |
|---------------------|------|----------|-------------|
| FIRE                |      |          |             |
| ENGINEERING         |      |          |             |
| UTILITIES           |      |          |             |
| STREETS             |      |          |             |
| LANDSCAPE           |      |          |             |

See notes C-4 & C-5  
CONDUCT LINA FOR USGMA APPROVAL BEFORE C.O.

OK per DEN 9-29-84

GENERAL NOTES

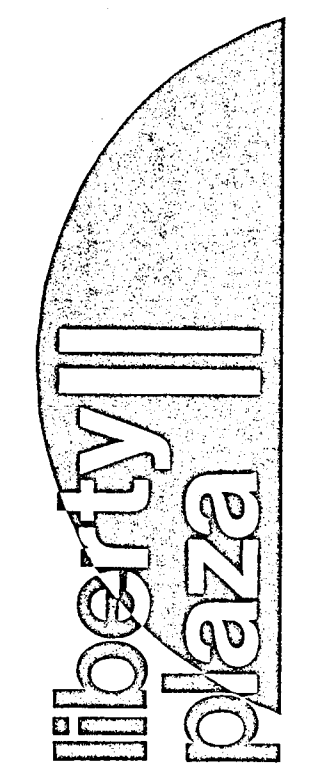
1. Type "A" light fixtures shall be removed by General Contractor and shall be relocated per Sheet GA 2.04.
2. Type "B" light fixtures shall be removed by General Contractor and shall be relocated per Sheet GA 2.04.
3. Soil boring locations provided by Hooper and Associates, Inc., per Report No. 84.179, Dated April 27, 1984.

**BLACK R. DAVIS & ASSOCIATES, INC.**  
consulting civil engineers & surveyors  
2902 Carlisle Street Dallas, Texas 75204

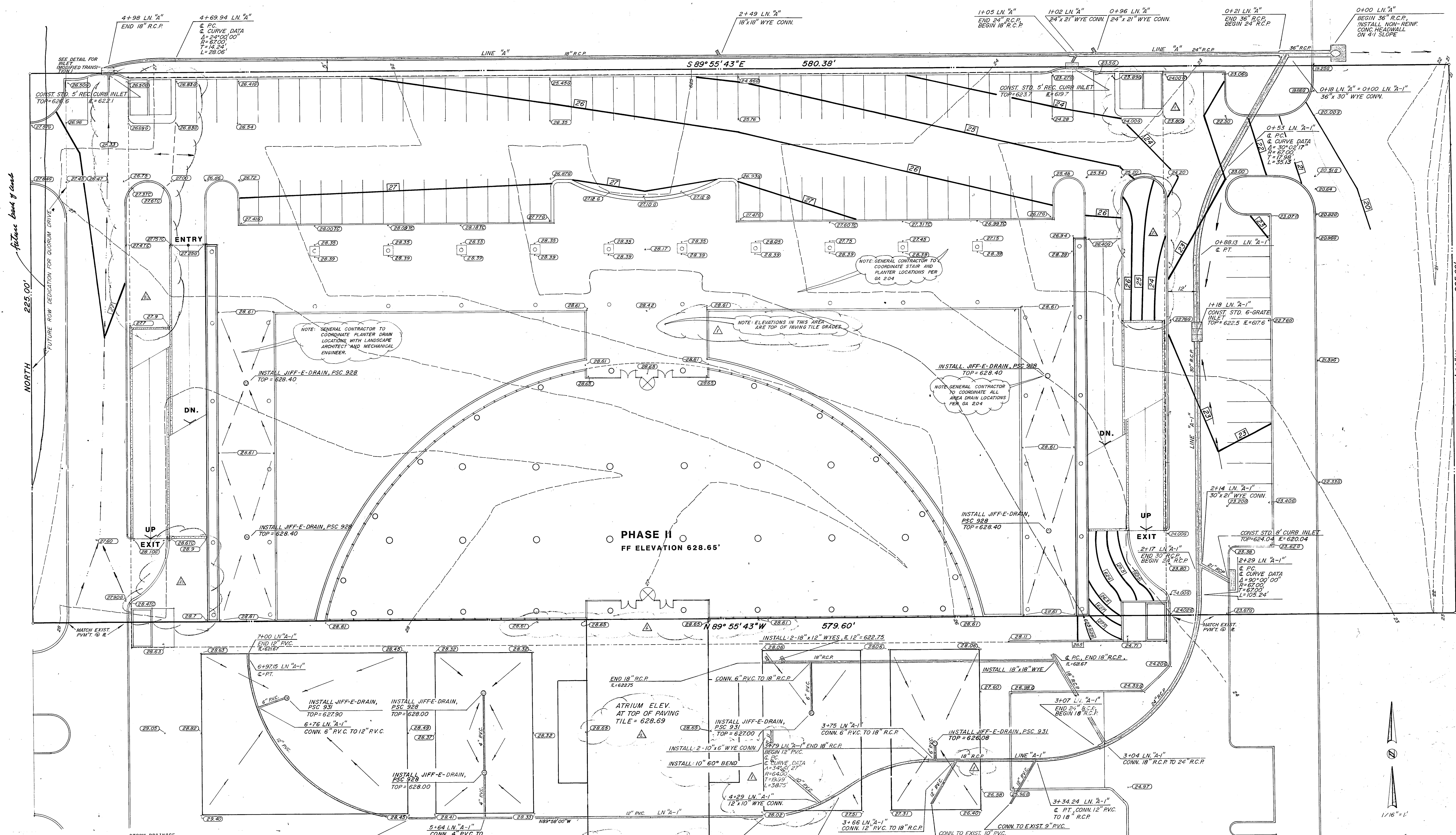
HARWOOD K SMITH & PARTNERS  
Architects/Engineers/Planners  
1111 Plaza of the Americas North, LB 307  
Dallas, Texas 75201 214/748-5261

HKS

t.f. stone companies dallas, texas



Job No: 1499  
Revisions:  
Sheet Title: TOPOGRAPHIC MAP  
Date: 7-24-84  
Drawn:  
Sheet No: C 1 of sheets

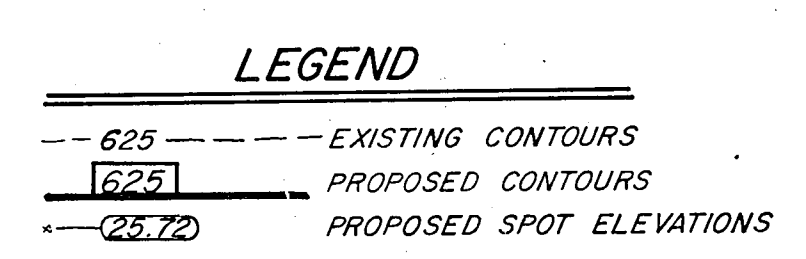


- STORM DRAINAGE GENERAL NOTES**
1. ALL MATERIALS AND WORKMANSHIP SHALL CONFORM TO THE CITY OF ADDISON STANDARDS AND SPECIFICATIONS.
  2. ALL REINFORCED CONCRETE PIPE SHALL BE MINIMUM CLASS III PIPE WITH TONGUE AND GROOVE JOINTS. RAM NECK SEALER OR APPROVED EQUAL SHALL BE USED IN ALL PIPE JOINTS.
  3. STORM DRAINAGE PIPE LESS THAN 15" DIAMETER SHALL BE EXTRA STRENGTH NONREINFORCED CONCRETE PIPE, VITRIFIED CLAY PIPE OR PVC PIPE AT THE CONTRACTOR'S OPTION WITH THE ENGINEER'S APPROVAL.
  4. WHENEVER A SMALLER PIPE IS JOINTED END-TO-END TO A LARGER PIPE, A CONCRETE COLLAR SHALL BE PLACED AROUND THE PIPES OVER THE JOINT.
  5. THE CONTRACTOR SHALL VERIFY LOCATION OF ALL UTILITIES PRIOR TO BEGINNING WORK AND SHALL PROTECT EXISTING IMPROVEMENTS DURING CONSTRUCTION.
  6. ALL TRENCH BACKFILL FOR STORM SEWER SHALL BE COMPACTED AS REQUIRED BY CITY, BUT IN NO CASE SHALL THE TOP 12" BE COMPACTED TO LESS THAN 90% STANDARD PROCTOR WITH THE REMAINDER BEING COMPACTED TO THAT OF ADJOINING SOIL CONDITIONS.
  7. CRUSHED STONE BEDDING OR APPROVED EQUAL WILL BE PROVIDED WHEN ROCK IS ENCOUNTERED IN STORM SEWER TRENCHES.
  8. ALL DRAINAGE STRUCTURES SHALL BE 3000 PSI CONCRETE AT 28 DAYS UNLESS OTHERWISE NOTED ON PLANS.

- GRADING GENERAL NOTES**
1. STRIP TOP 3" OF TOPSOIL AND REUSE AS FILL MATERIAL OUTSIDE PAVED AREA.
  2. ALL FILL SHALL BE COMPACTED TO 95% PROCTOR DENSITY IN A MAXIMUM OF SIX (6) INCH LIFTS.
  3. IT WILL BE THE RESPONSIBILITY OF THE CONTRACTOR TO PROTECT ALL PUBLIC UTILITIES IN THE CONSTRUCTION OF THIS PROJECT.

**PHASE I**  
FF ELEVATION 628.65'

**PHASE II**  
FF ELEVATION 628.65'



NOTE: THIS BASE SHEET WAS FURNISHED TO JACK R. DAVIS AND ASSOC. BY HKS.

BENCHMARK: SQUARE CUT ON TOP OF CURB OF LIBERTY PLAZA ISLAND N.E. CORNER OF LIBERTY PLAZA ELEV. = 628.15

**JACK R. DAVIS & ASSOCIATES, INC.**  
consulting civil engineers & surveyors  
2902 Carlisle Street Dallas, Texas 75204

**HARWOOD K SMITH & PARTNERS**  
Architects/Engineers/Planners  
1111 Plaza of the Americas North, LB 307  
Dallas, Texas 75201 214/748-6261

**HKS**

t.f. stone companies dallas, texas

liberty plaza

Job No:  
Revisions:  
18/20/84  
ADDENDUM # 2

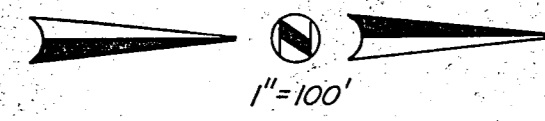
Sheet Title:  
STORM SEWER GRADING PLAN

Date:  
7/24/84

Drawn:  
C 2

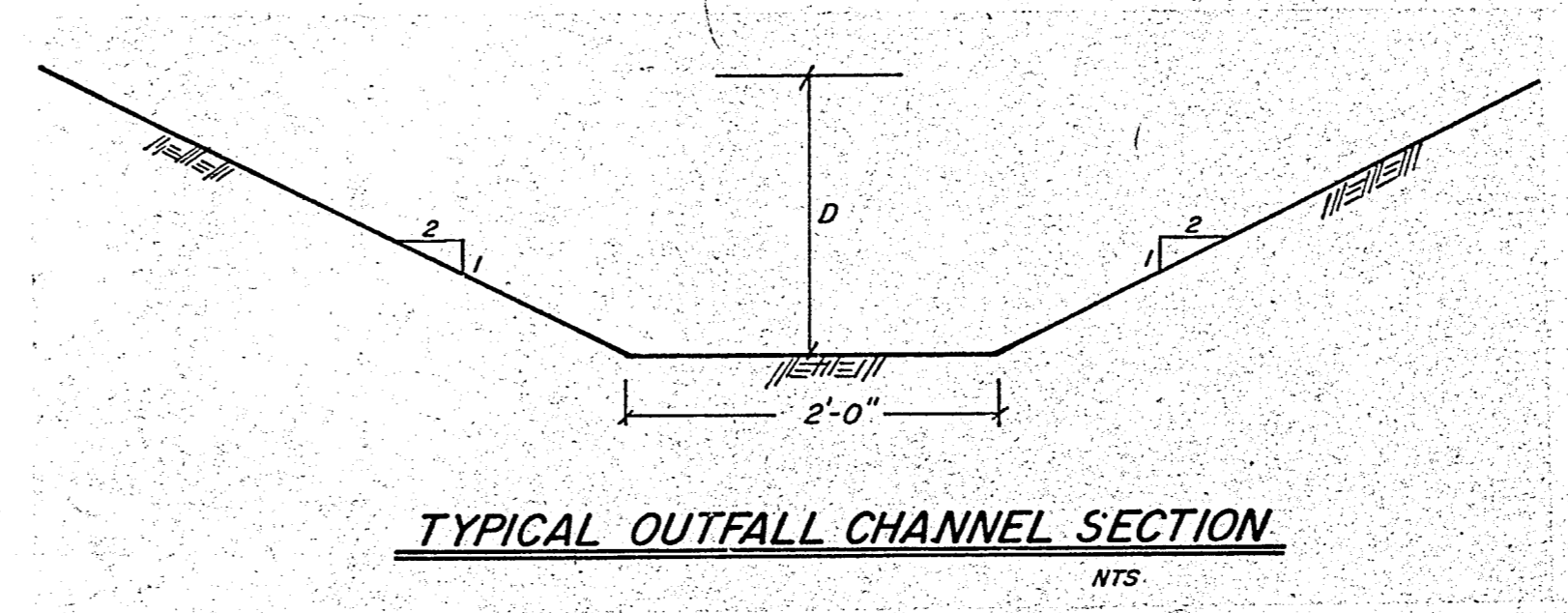
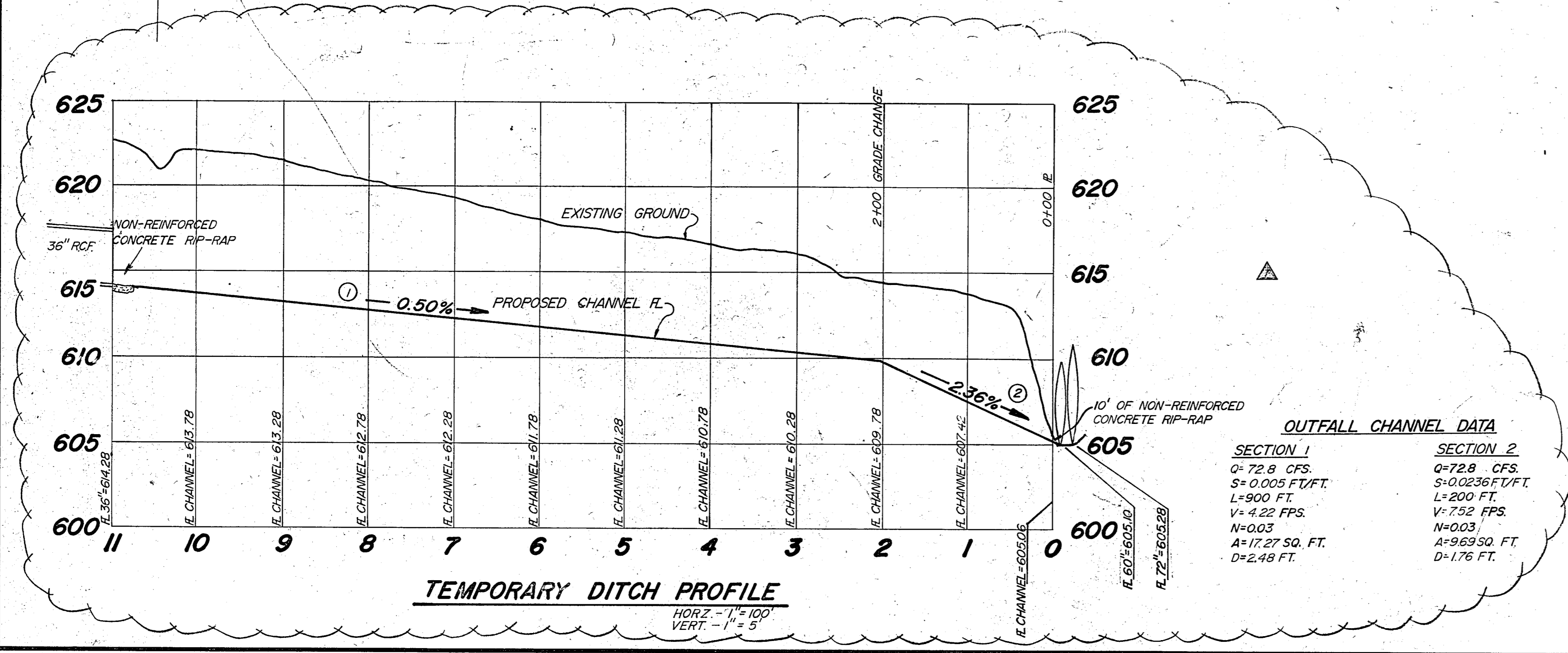
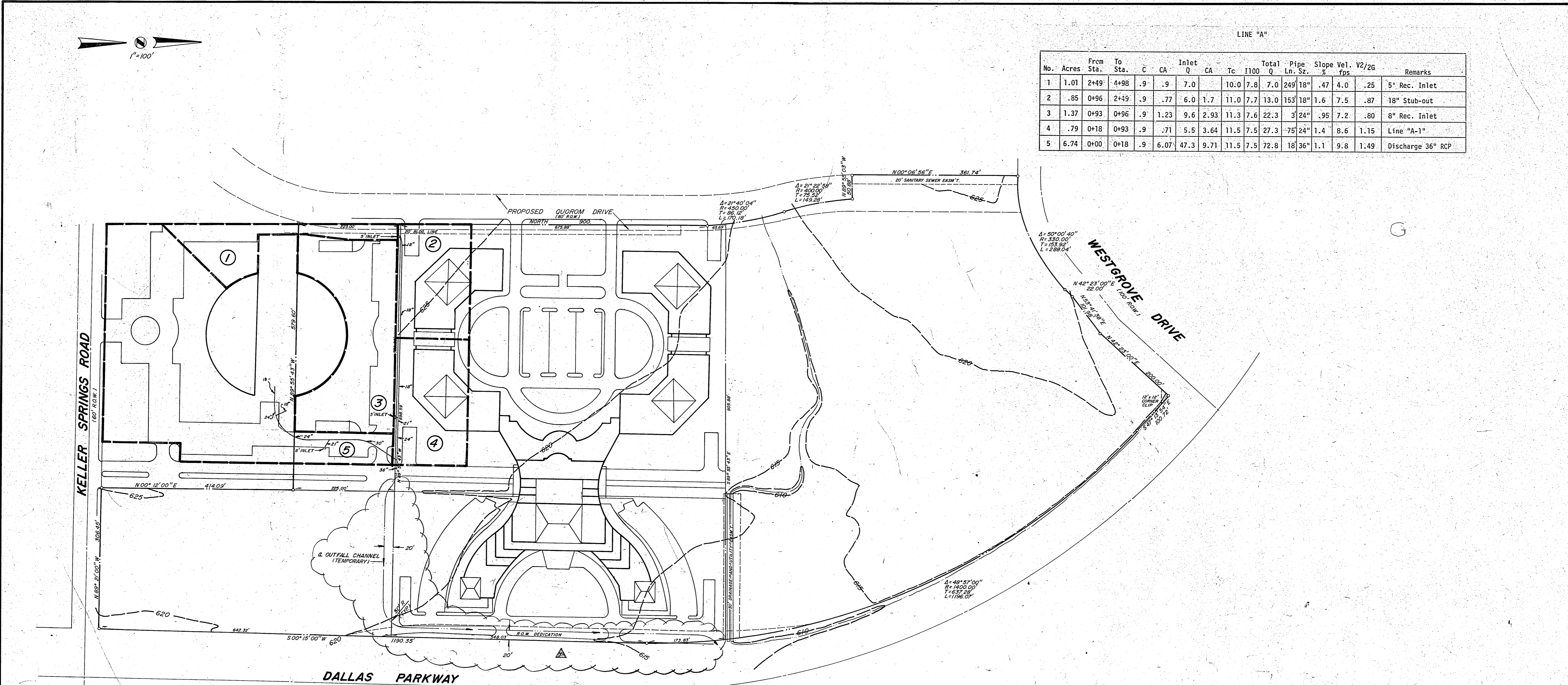
Sheet No:  
C 2

of sheet  
18/70



LINE "A"

| No. | Acres | From Sta. | To Sta. | C  | CA   | Inlet Q | CA   | Tc   | I100 Q | Total Pipe Ln. Sz. | Slope % | Vel. fps | V2/2g | Remarks |     |                   |
|-----|-------|-----------|---------|----|------|---------|------|------|--------|--------------------|---------|----------|-------|---------|-----|-------------------|
| 1   | 1.01  | 2+49      | 4+98    | .9 | .9   | 7.0     |      | 10.0 | 7.8    | 7.0                | 249     | 18"      | .47   | 4.0     | .25 | 5" Rec. Inlet     |
| 2   | .85   | 0+96      | 2+49    | .9 | .77  | 6.0     | 1.7  | 11.0 | 7.7    | 13.0               | 153     | 18"      | 1.6   | 7.5     | .87 | 18" Stub-out      |
| 3   | 1.37  | 0+93      | 0+96    | .9 | 1.23 | 9.6     | 2.93 | 11.3 | 7.6    | 22.3               | 3' 24"  | .95      | 7.2   | .80     |     | 8" Rec. Inlet     |
| 4   | .79   | 0+18      | 0+93    | .9 | .71  | 5.5     | 3.64 | 11.5 | 7.5    | 27.3               | 75' 24" | 1.4      | 8.6   | 1.15    |     | Line "A-1"        |
| 5   | 6.74  | 0+00      | 0+18    | .9 | 6.07 | 47.3    | 9.71 | 11.5 | 7.5    | 72.8               | 18' 36" | 1.1      | 9.8   | 1.49    |     | Discharge 36" RCP |



BENCHMARK:  
 SQUARE CUT ON TOP OF CURB OF  
 ISLAND N.E. CORNER OF LIBERTY PLAZA  
 ELEV.=622.15  
 NOTE: BOUNDARY INFORMATION IS FROM  
 A BOUNDARY SURVEY BY GEORAM CORP.  
 DATED FEBRUARY, 1984.

**DRAINAGE AREA MAP**  
 LIBERTY PLAZA

**JACK R. DAVIS**  
 & associates, inc.  
 consulting civil engineers & surveyors  
 2902 Carlisle Street Dallas, Texas 75204

| DESIGN | DRAWN  | DATE | SCALE   | NOTES  | FILE | NO.   |
|--------|--------|------|---------|--------|------|-------|
| J.R.D. | J.R.D. | 6/84 | 1"=100' | J.R.D. | C    | 84170 |

INSTALL: 1-10" x 8" TAPPING SLEEVE & 1-8" VALVE

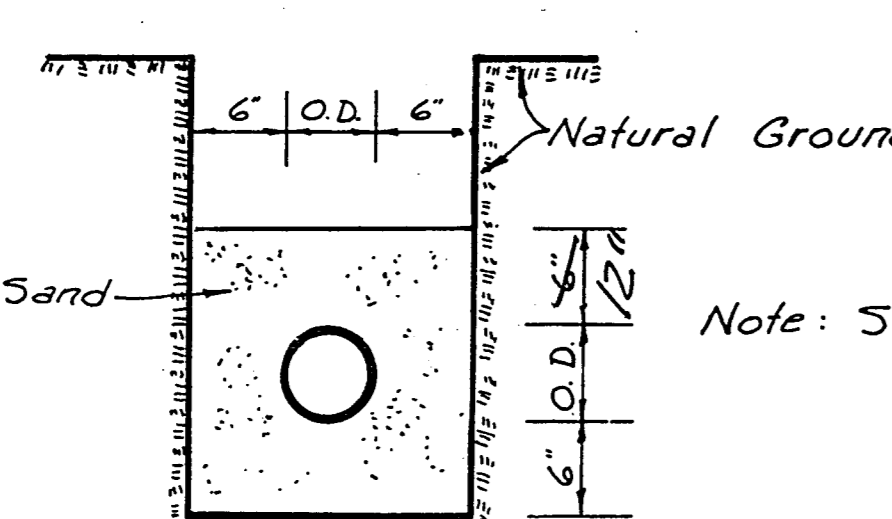
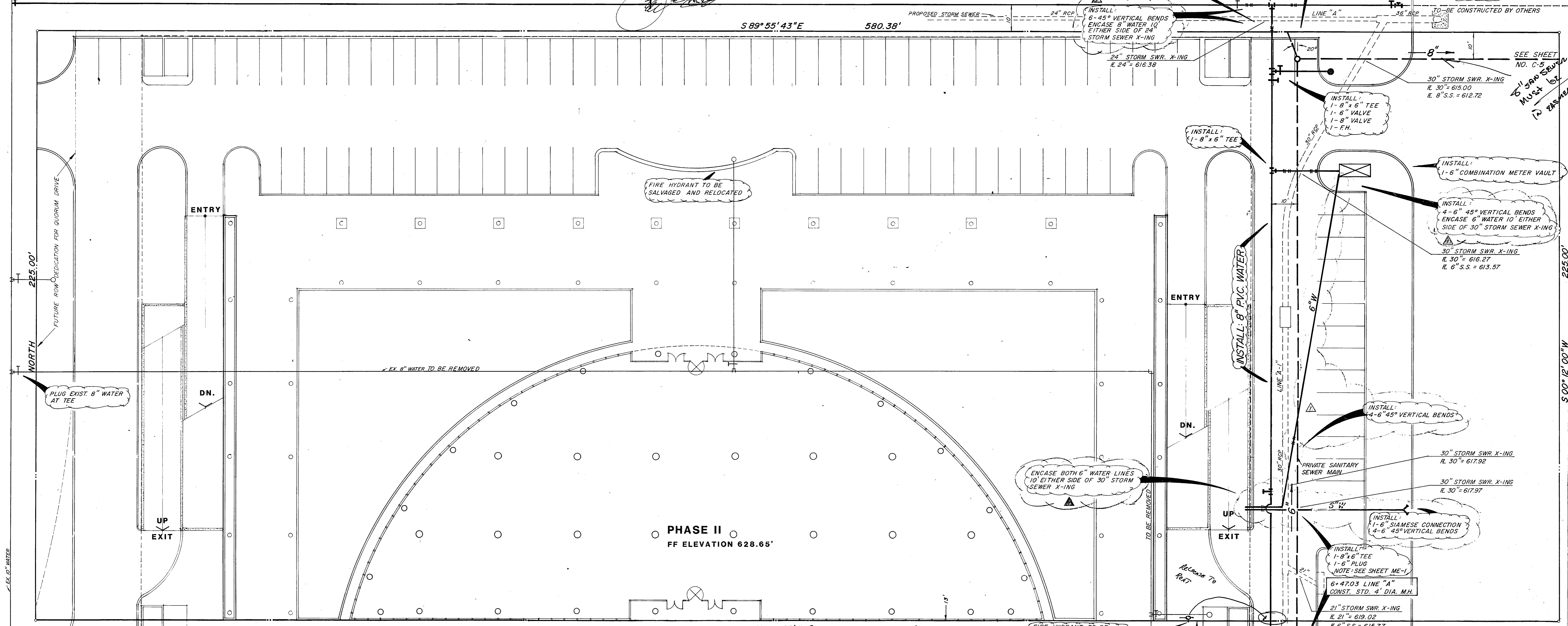
INSTALL: 8" P.V.C. WATER

INSTALL 10 L.F. OF 8" P.V.C. PLUG AT PROP. LINE

INSTALL: 1-8" x 8" TEE 1-8" VALVE

4-19.03 LINE "A" CONST. STD. 4" DIA. M.H.

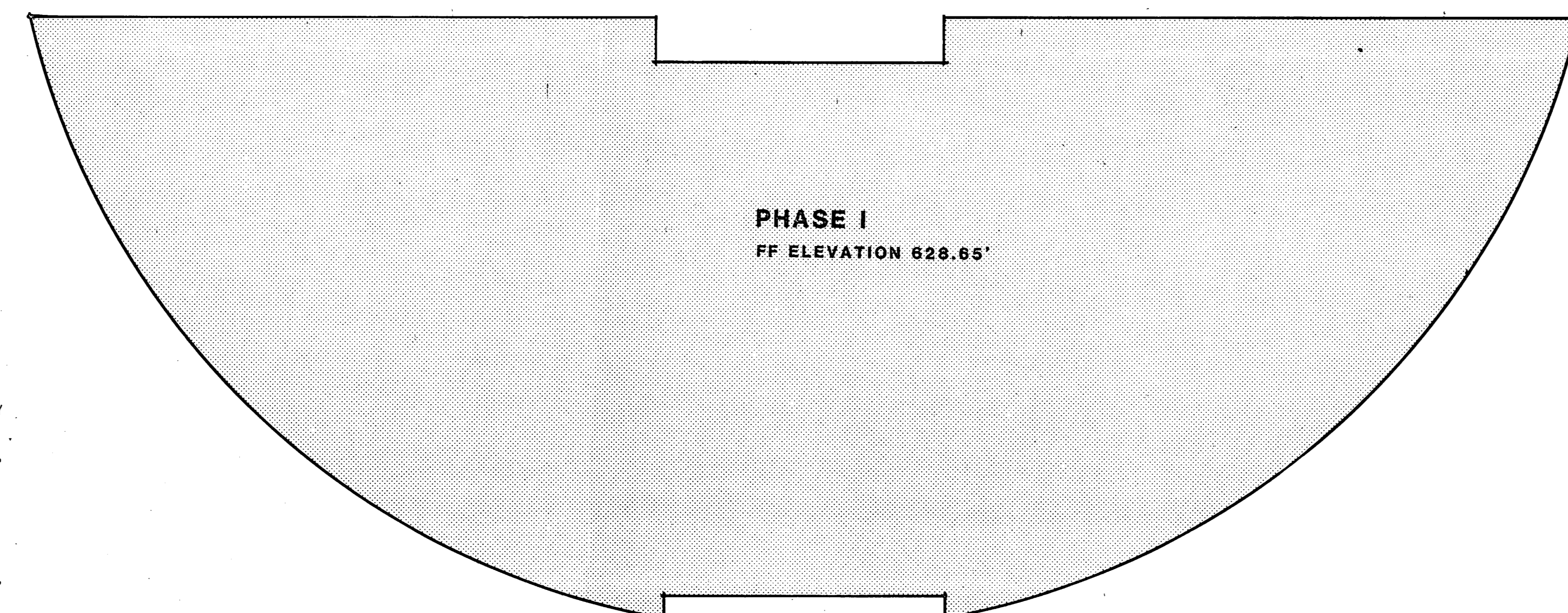
INSTALL: 1-8" x 8" TEE 2-8" PLUGS 1-8" VALVE



TYPICAL WATER AND SANI. SEWER EMBEDMENT DETAIL N.T.S.

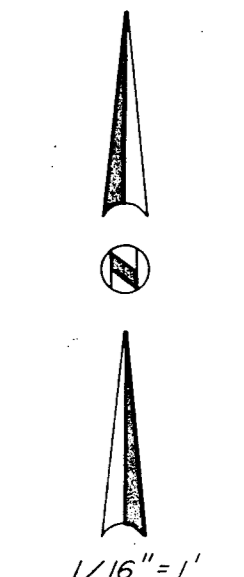
WATER AND SANITARY SEWER GENERAL NOTES

- 1. ALL MATERIALS AND WORKMANSHIP SHALL CONFORM TO THE CITY OF ADDISON STANDARDS AND SPECIFICATIONS.
2. ALL WATER MAINS SHALL BE PVC SDR-18 WATER PIPE (BLUE BRUTE WITH WIRE TRACERS). TRACER TO BE #12 INSULATED COPPER.
3. ALL WATER MAINS SHALL HAVE MINIMUM COVER BELOW FINISHED GRADES AS FOLLOWS: 6" & 8" - 48" OR AS REQUIRED TO CLEAR OTHER UTILITIES.
4. ALL SEWER MAINS SHALL BE PVC SDR-35 SANITARY SEWER PIPE.
5. ALL PIPE EMBEDMENT SHALL BE AS DETAILED ON THIS SHEET.
6. ALL TEES, CONNECTIONS, BENDS, DEAD-ENDS, FIRE HYDRANTS, ETC., SHALL BE SECURELY BLOCKED AGAINST TRENCH WALLS USING 2000 PSI CONCRETE.
7. ALL TRENCH BACKFILL FOR THESE UTILITIES SHALL BE COMPACTED AS REQUIRED BY CITY, BUT IN NO CASE SHALL THE TOP 12" BE COMPACTED TO LESS THAN 90% AASHO DENSITY WITH THE REMAINDER OF THE DITCH BEING COMPACTED TO THAT OF ADJOINING SOIL CONDITIONS.
8. CONTRACTOR TO VERIFY LOCATION OF ALL UTILITIES PRIOR TO BEGINNING WORK AND SHALL PROTECT EXISTING IMPROVEMENTS DURING CONSTRUCTION.
9. THE CONTRACTOR SHALL INCLUDE IN HIS BID PRICE ALL COSTS OF UTILITY CONNECTIONS, TAP FEES AND THE TESTING OF NEW MAINS REQUIRED BY THE CITY OF ADDISON TO COMPLETE THE WORK WHETHER THESE SERVICES ARE PERFORMED BY THE CONTRACTOR OR BY OTHERS.



PHASE I FF ELEVATION 628.65'

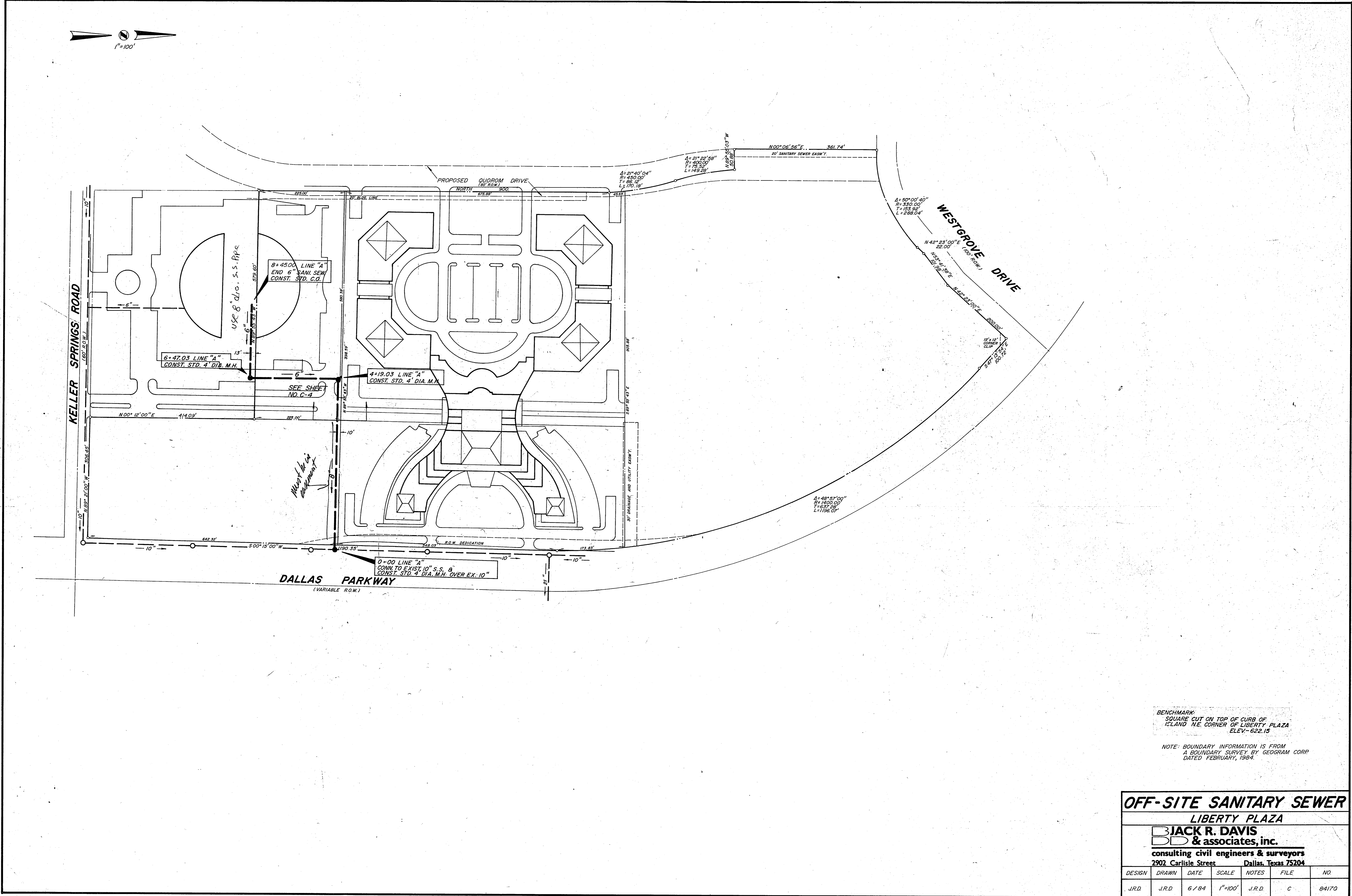
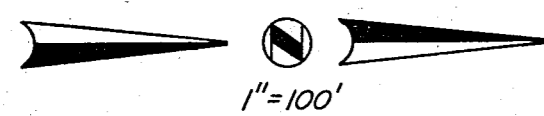
PHASE II FF ELEVATION 628.65'



NOTE THIS BASE SHEET WAS FURNISHED TO JACK R. DAVIS AND ASSOC. BY HKS. BENCHMARK: SQUARE CUT ON TOP OF CURB OF ISLAND N.E. CORNER OF LIBERTY PLAZA ELEV. 622.15

JACK R. DAVIS & associates, inc. consulting civil engineers & surveyors 2902 Carlisle Street Dallas, Texas 75204

Project information including sheet title 'WATER AND SANITARY SEW PLAN', job number, revisions, and contact information for HKS and Jack R. Davis & Associates, Inc.



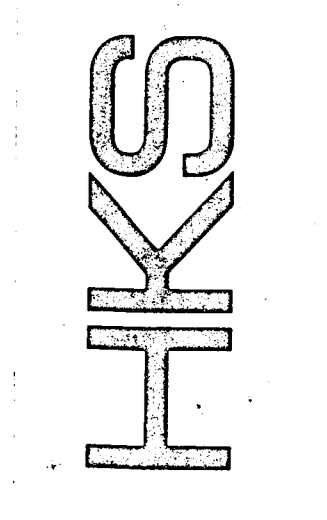
BENCHMARK:  
 SQUARE CUT ON TOP OF CURB OF  
 ISLAND N.E. CORNER OF LIBERTY PLAZA  
 ELEV. 622.15

NOTE: BOUNDARY INFORMATION IS FROM  
 A BOUNDARY SURVEY BY GEORAM CORP.  
 DATED FEBRUARY, 1984.

**OFF-SITE SANITARY SEWER**  
**LIBERTY PLAZA**  
**JACK R. DAVIS**  
**& associates, inc.**  
 consulting civil engineers & surveyors  
 2902 Carlisle Street Dallas, Texas 75204

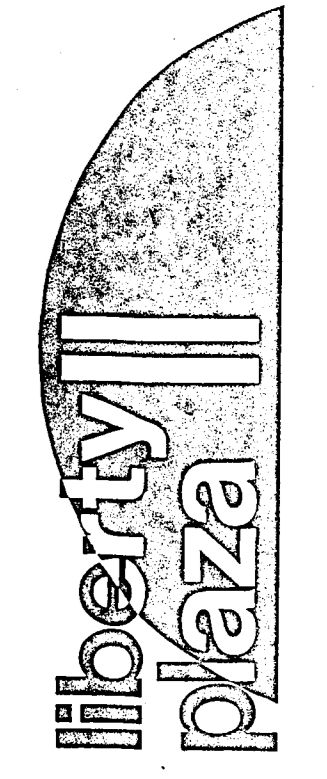
| DESIGN | DRAWN  | DATE | SCALE   | NOTES  | FILE | NO    |
|--------|--------|------|---------|--------|------|-------|
| J.R.D. | J.R.D. | 6/84 | 1"=100' | J.R.D. | C    | 84170 |

HARWOOD K SMITH & PARTNERS  
 Architects/Engineers/Planners  
 1111 Plaza of the Americas North, LB 307  
 Dallas, Texas 75201 214/748-5251

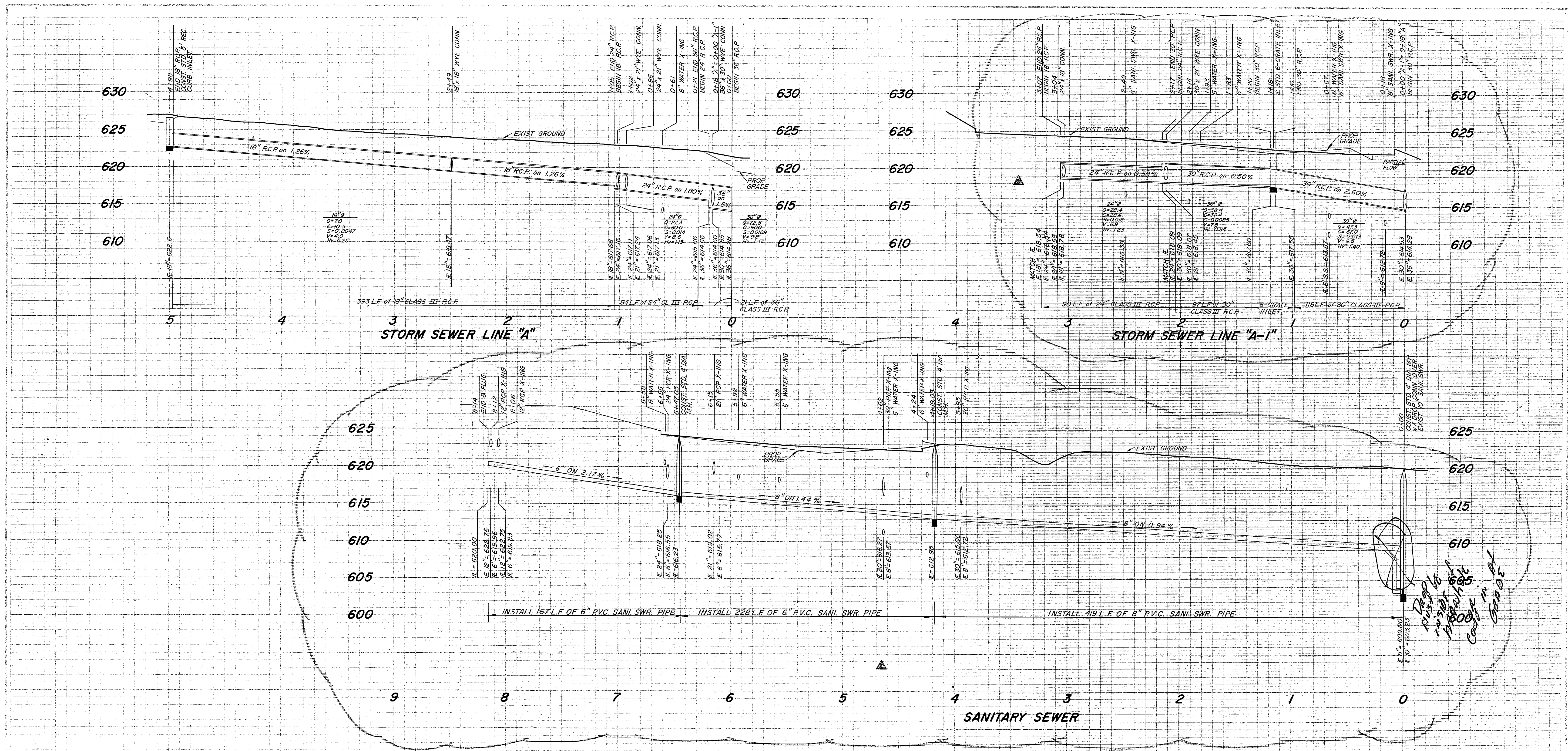


Handwritten signature and date: 5-24-84

t.f. stone companies dallas, texas



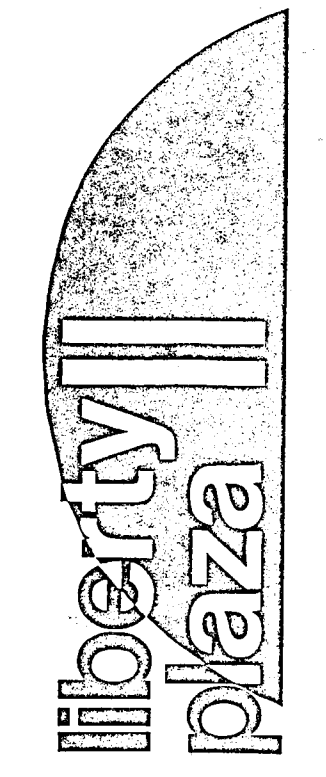
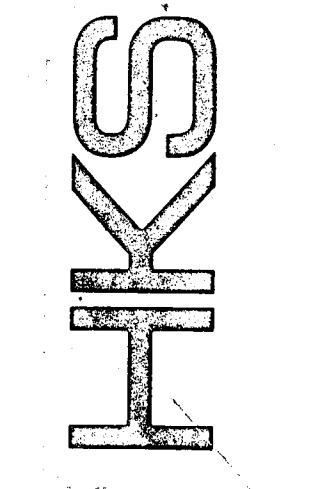
Job No: \_\_\_\_\_  
 Revision: \_\_\_\_\_  
 Sheet Title: OFF-SITE SANITARY SEWER  
 Date: 5-24-84  
 Drawn: \_\_\_\_\_  
 Sheet No: \_\_\_\_\_

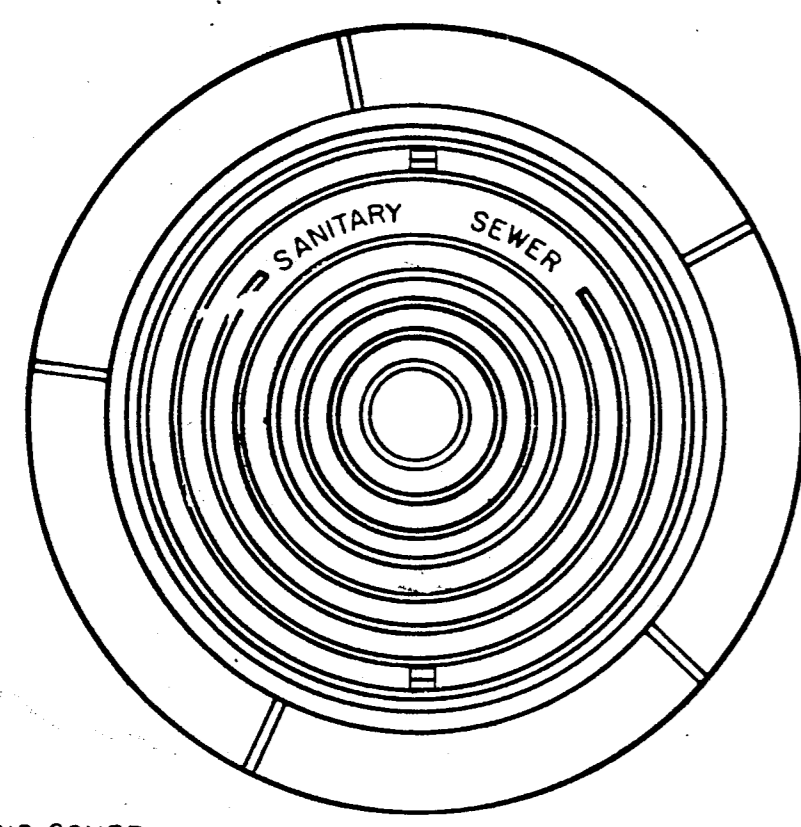


**PROFILES**  
**LIBERTY PLAZA**  
**JACK R. DAVIS**  
**& associates, inc.**  
 consulting civil engineers & surveyors  
 2802 Carlisle Street Dallas, Texas 75204

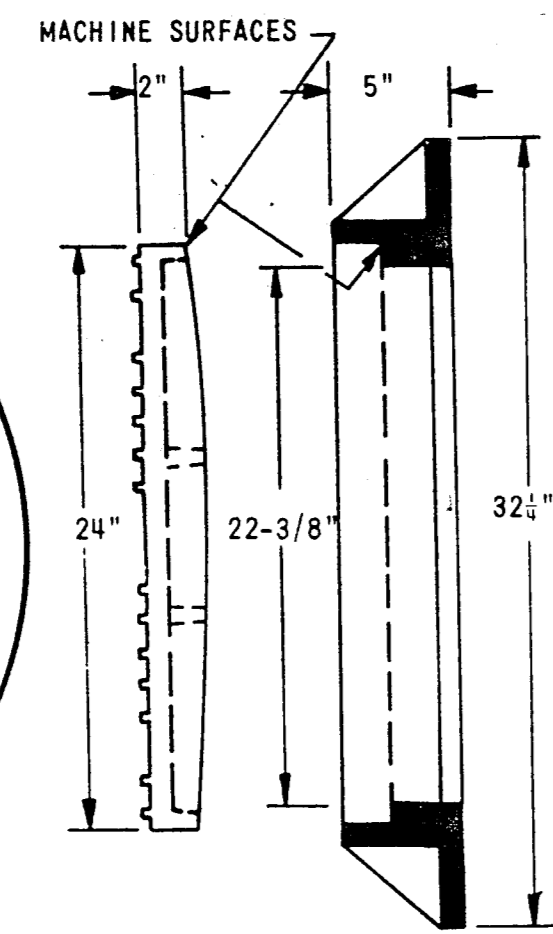
| DESIGN | DRY    | DATE | SCALE                      | NOTES  | FILE | NO.   |
|--------|--------|------|----------------------------|--------|------|-------|
| J.R.D. | J.R.D. |      | 1/4" = 1'-00"<br>1/8" = 6" | J.R.D. | C    | B4170 |

BENCHMARK  
 SQUARE CUT ON TOP OF CURB OF  
 ISLAND N.E. CORNER OF LIBERTY PLAZA  
 ELEV=622.15



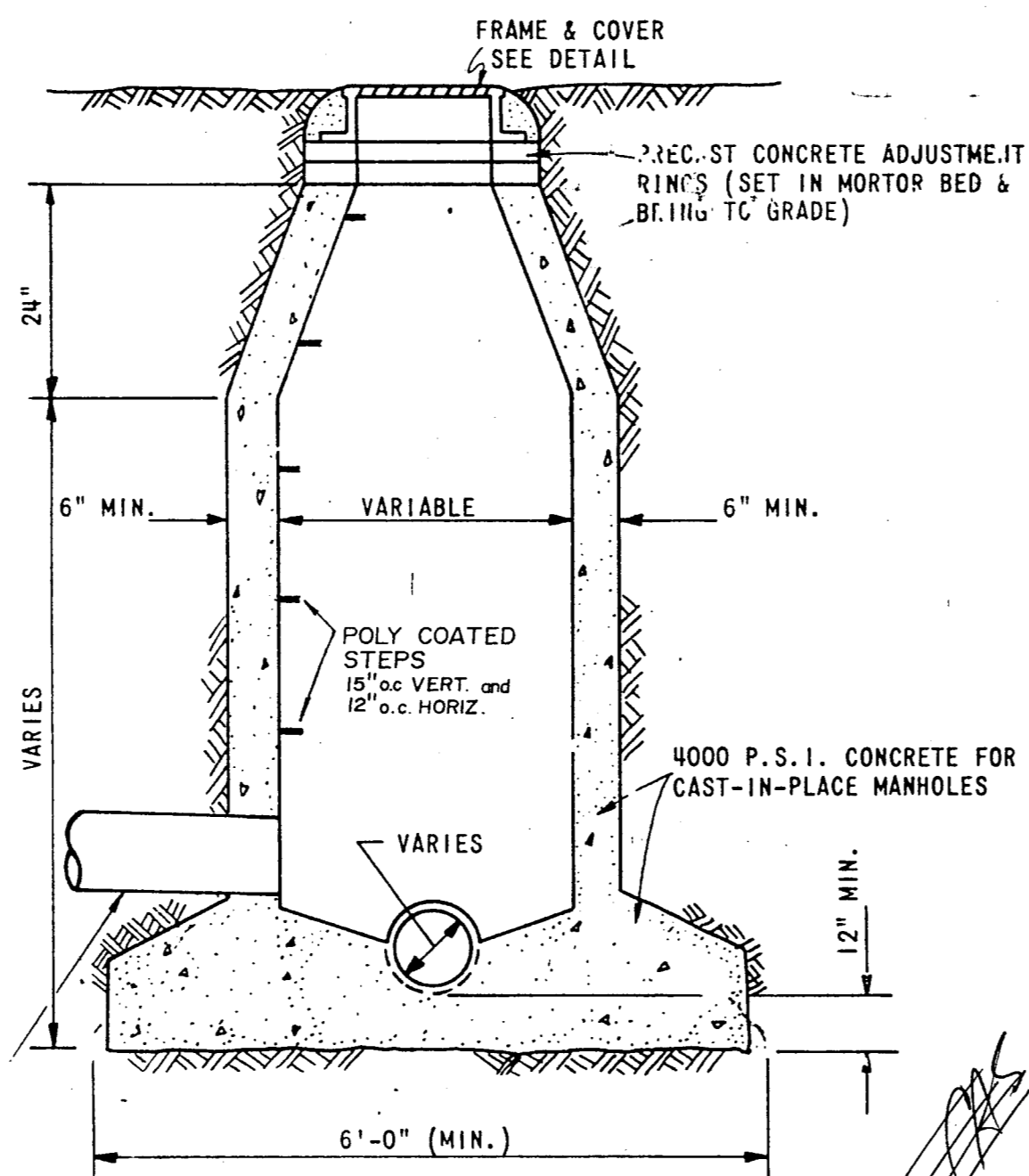


**CAST IRON GRATE AND FRAME DETAIL**  
 PROVIDE WITH HOOK AND BAR SLOTS FOR REMOVAL OF COVER



APPROX. WEIGHT RING AND COVER: 400 LBS.

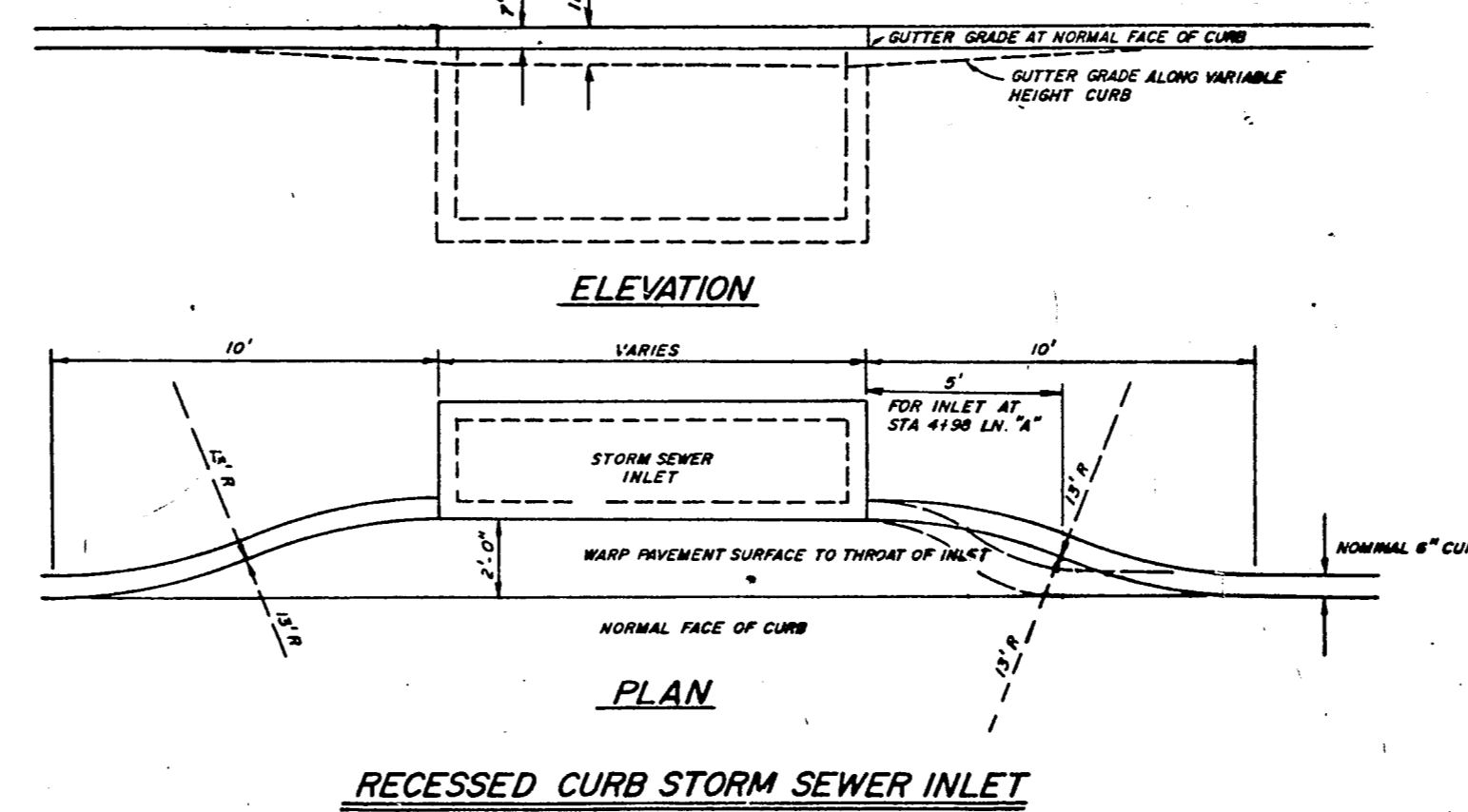
STUBOUTS TO BE A MINIMUM OF 5" LONG WITH CONC. CRADLE UNDER ENTIRE LENGTH



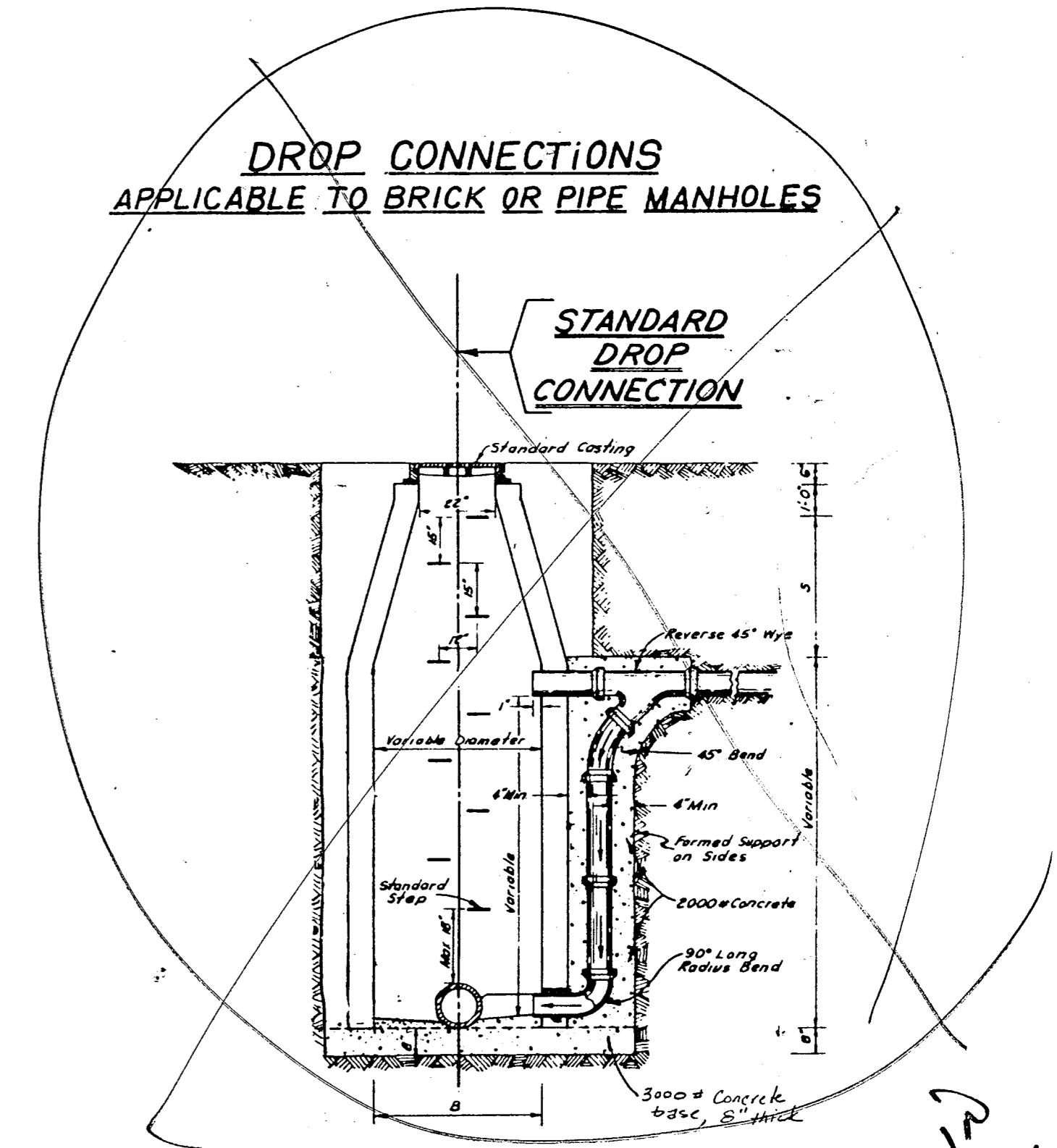
**STANDARD CAST-IN-PLACE MANHOLE**

CAST-IN-PLACE NOTES:

1. KEYWAYS REQUIRED FOR ALL CONSTRUCTION JOINTS.
2. P.V.C. WATER STOP REQUIRED FOR ALL JOINTS IN 1" WED 1'-0" OF MANHOLES.
3. POLY COATED STEPS REQUIRED



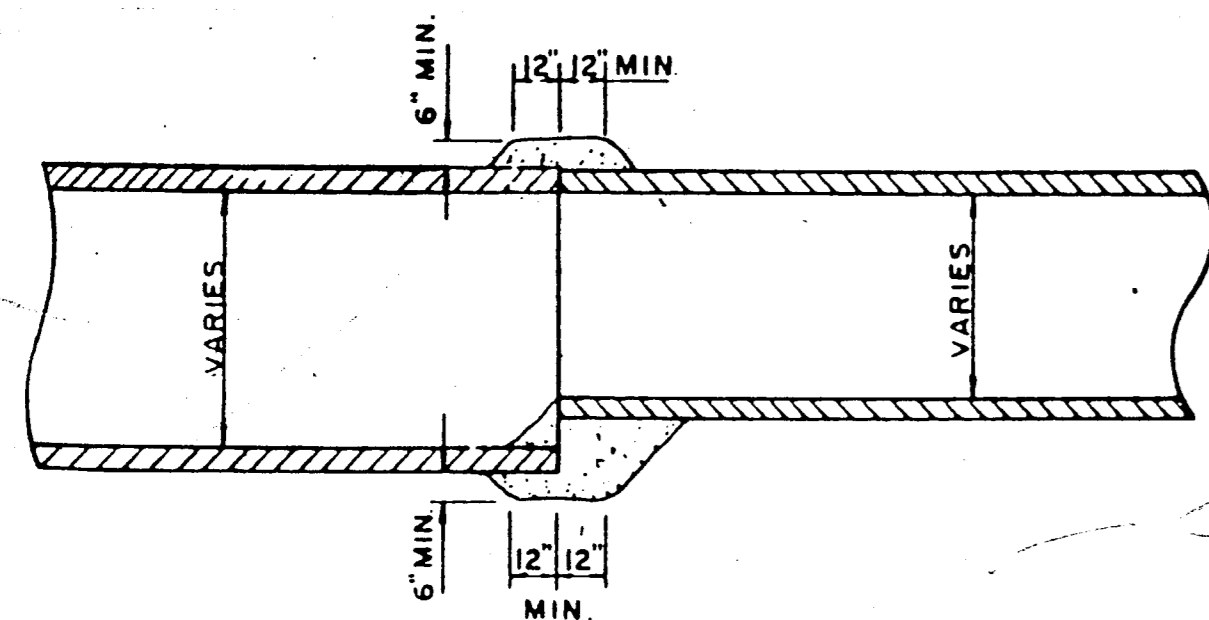
**RECESSED CURB STORM SEWER INLET**



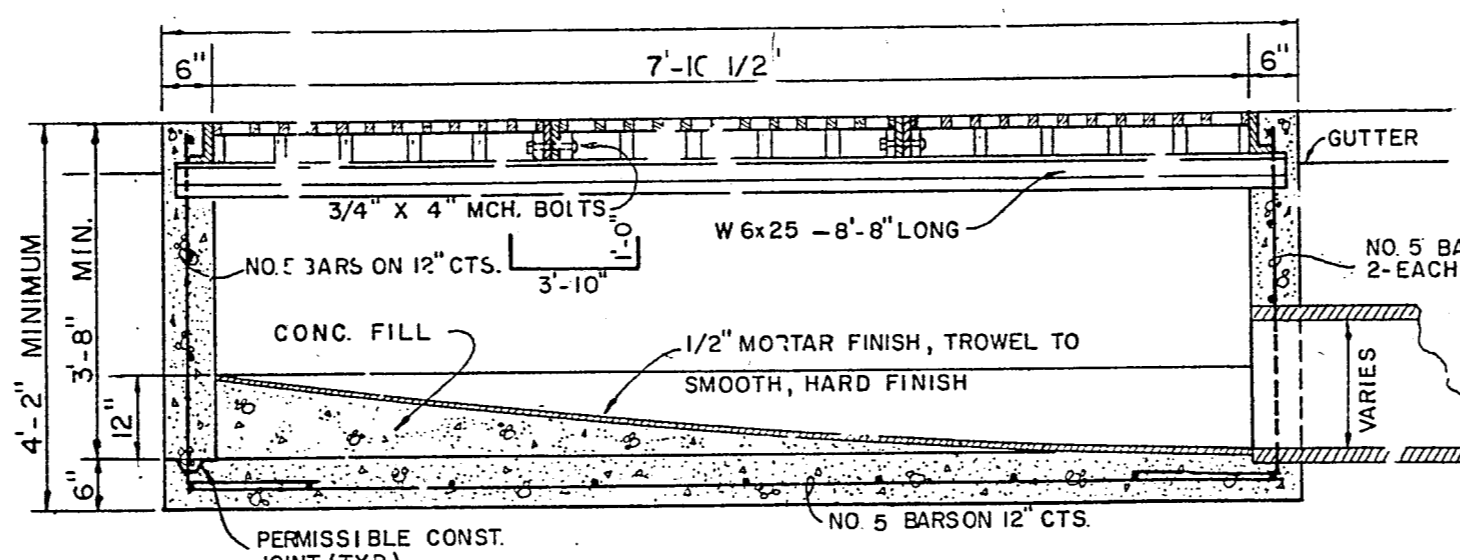
**DROP CONNECTIONS APPLICABLE TO BRICK OR PIPE MANHOLES**

**STANDARD DROP CONNECTION**

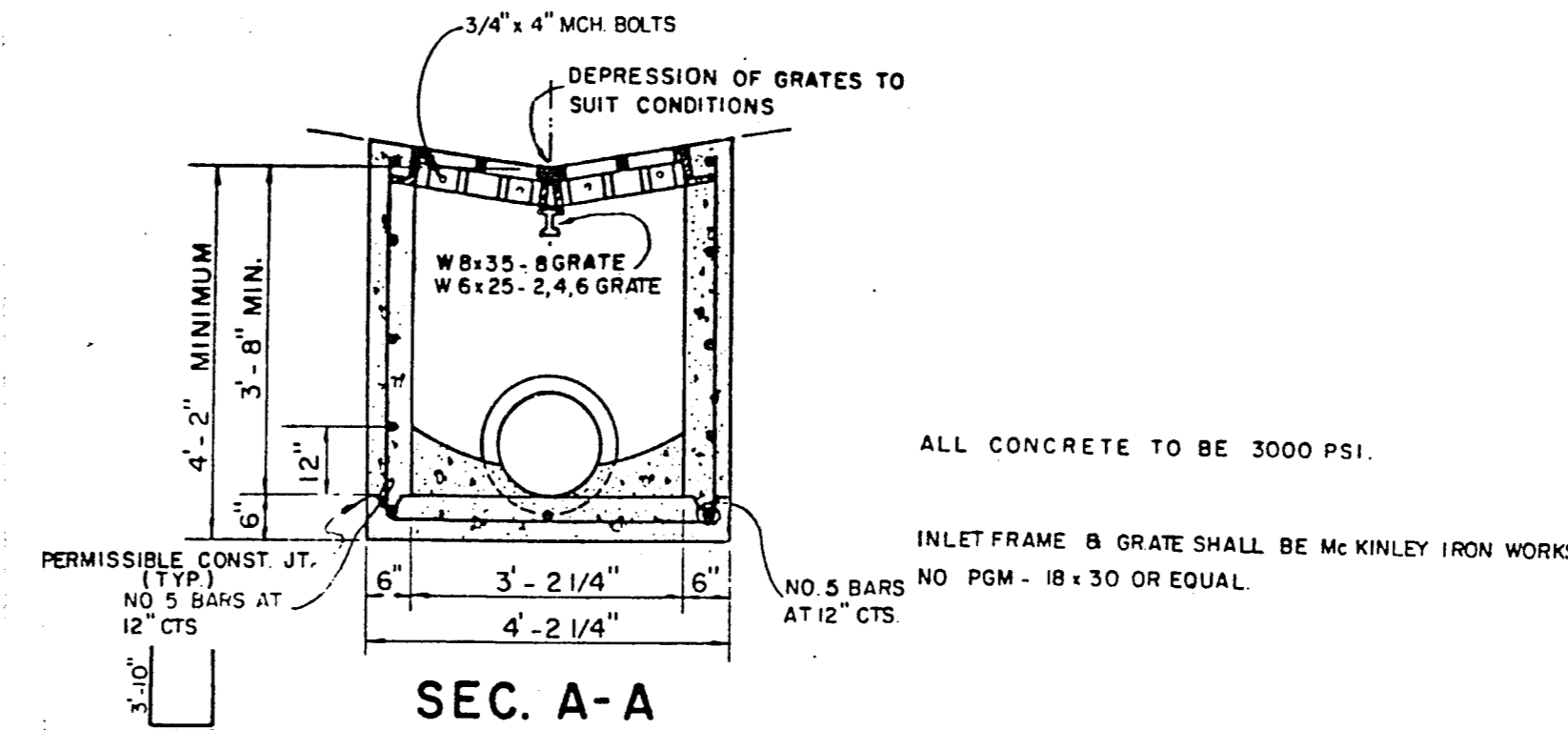
*Drop must be in Manhole or AT GRADE*



**DETAIL OF CONCRETE COLLAR FOR PIPE CONNECTIONS**



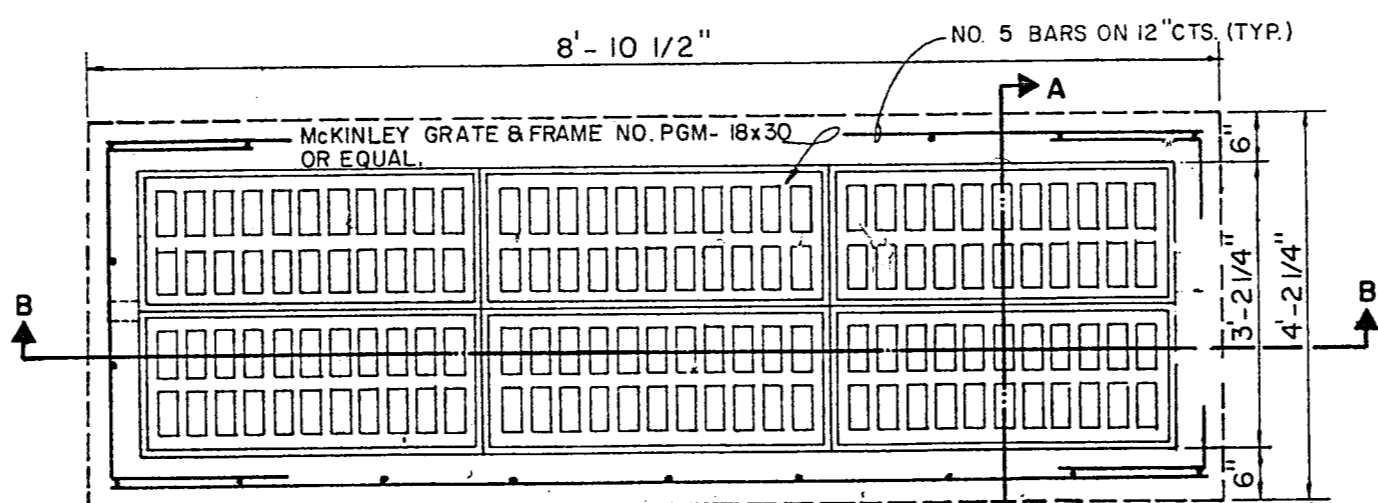
**SEC. B-B**



**SEC. A-A**

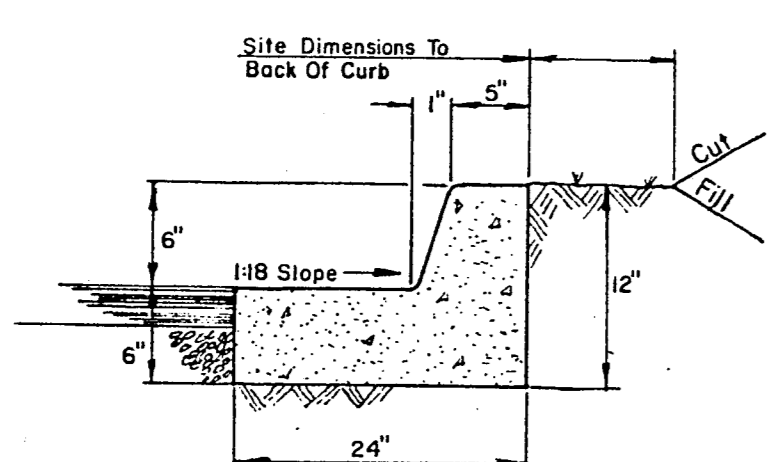
ALL CONCRETE TO BE 3000 PSI.

INLET FRAME & GRATE SHALL BE MCKINLEY IRON WORKS NO 5 BARS NO PGM - 18 x 30 OR EQUAL



**PLAN**

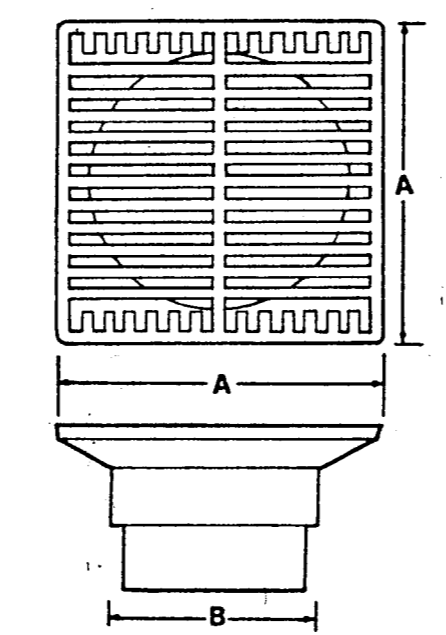
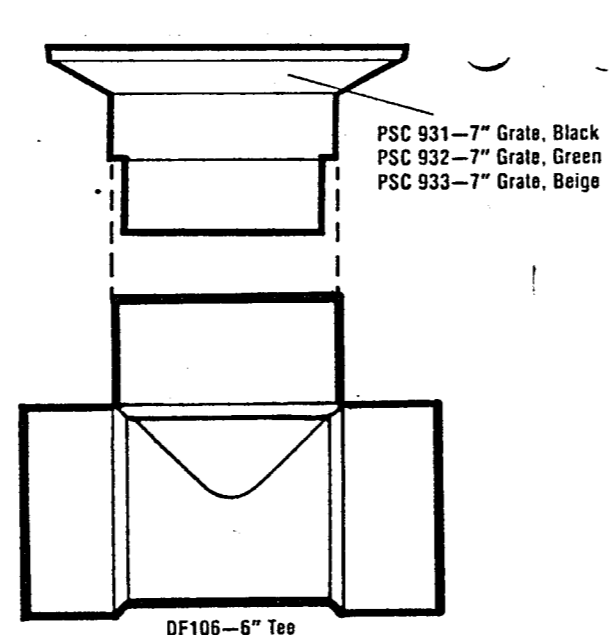
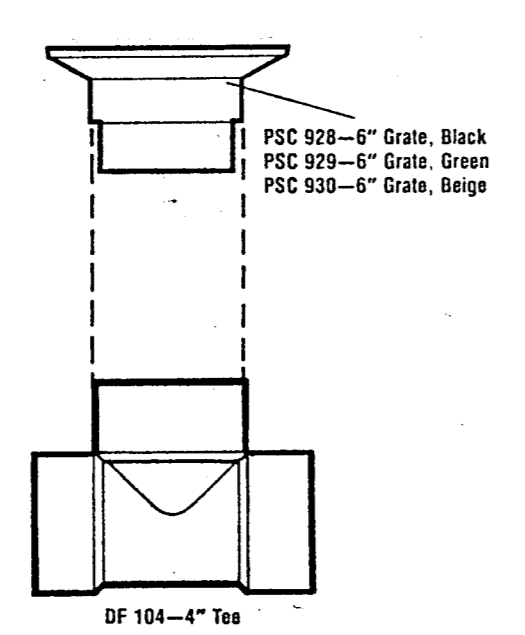
**STANDARD SIX GRATE INLET**



**CURB & GUTTER TYPE**

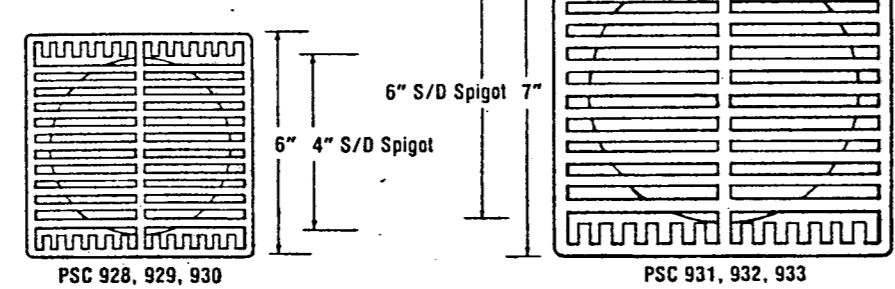
1. Concrete 3,000 PSI @ 28 Days.
2. Provide 1/2" Deep Contraction Joint @ 10' Intervals
3. Provide 1/2" Expansion Joint @ 50' Intervals, @ All Tangent Points, And @ All Rigid Structures.
4. Tool All Joints And Edges To 1/8" R.

**CURB DETAIL**



| Part No. | A  | B      | Open Grate Area (Sq. In.) | Recommended Surface Area (Sq. Ft.) |
|----------|----|--------|---------------------------|------------------------------------|
| PSC 928  | 6" | 4.215" | 7                         | 2.000                              |
| PSC 931  | 7" | 6.235" | 14                        | 4.000                              |

NOTE: APPROVED EQUAL PRODUCTS MAY BE SUBSTITUTED FOR "JIFF-E-DRAIN" DRAINS AND TEES.



**AREA DRAIN DETAIL**