

INSTALL 8" P.V.C. WATER

S 89° 55' 43" E 580.38'

INSTALL 10' L.F. OF 6" P.V.C. PLUG AT PROR. LINE

INSTALL 1-8" x 8" TEE 1-8" VALVE

4-19.03 LINE "A" CONST. STD. 4" DIA. M.H.

INSTALL 1-8" x 8" TEE 2-8" PLUGS 1-8" VALVE

FOR CONTINUATION SEE OFF-SITE WATER BELOW

INSTALL 1-6" x 45° VERTICAL BENDS ENCASE 6" WATER TO EITHER SIDE OF 24" STORM SEWER X-ING

24" STORM SWR. X-ING E. 24° = 618.38

METER INSTALLATION 6" VALVE - 3 6" x 4" TEE - 1 6" METER - 1 6" SLEEVE - 1

INSTALL 1-6" COMBINATION METER VAULT WITH BYPASS

INSTALL 4-6" x 45° VERTICAL BENDS ENCASE 6" WATER TO EITHER SIDE OF 30" STORM SEWER X-ING

30" STORM SWR. X-ING E. 30° = 614.70 E. 30° S.S. = 613.57

INSTALL 1-8" x 6" TEE

INSTALL 8" P.V.C. WATER

INSTALL 250' L.F. S.S. PIPE

ROUTE WATER AROUND STORM SEWER

INSTALL 4-6" x 45° VERTICAL BENDS

30" STORM SWR. X-ING E. 30° = 615.23

30" STORM SWR. X-ING E. 30° = 615.24

INSTALL 2-6" SIAMESE CONNECTION 4-6" x 45° VERTICAL BENDS

6-47.03 LINE "A" CONST. STD. 4" DIA. M.H.

21" STORM SWR. X-ING E. 21° = 619.02 E. 6" S.S. = 615.77

INSTALL 10' L.F. OF 4" P.V.C. PLUG

INSTALL 2-8" x 45° BENDS

24" STORM SWR. X-ING E. 24° = 618.25 E. 6" S.S. = 616.38

INSTALL 1-8" x 6" TEE 1-6" VALVE 1-F.H.

FIRE HYDRANT TO BE SALVAGED AND RELOCATED

CONNECT TO EXIST. 8" WATER WITH 1-8" 90° BEND INSTALL 1-8" VALVE

18" STORM SWR. X-ING E. 18° = 619.41

12" STORM SWR. X-ING E. 12° = 622.75 E. 6" S.S. = 619.96

12" STORM SWR. X-ING E. 12° = 622.75 E. 6" S.S. = 619.83

INSTALLED 181' L.F. S.S. PIPE

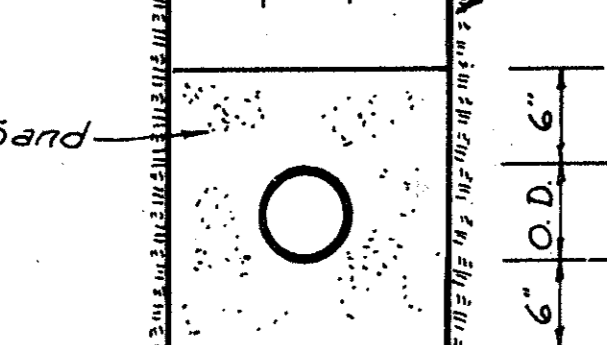
N 89° 55' 43" W 579.60'

PHASE II FF ELEVATION 628.65'

EX. 8" WATER TO BE REMOVED

PLUG EXIST. 8" WATER AT TEE

Natural Ground



Note: Size of Pipe Varies

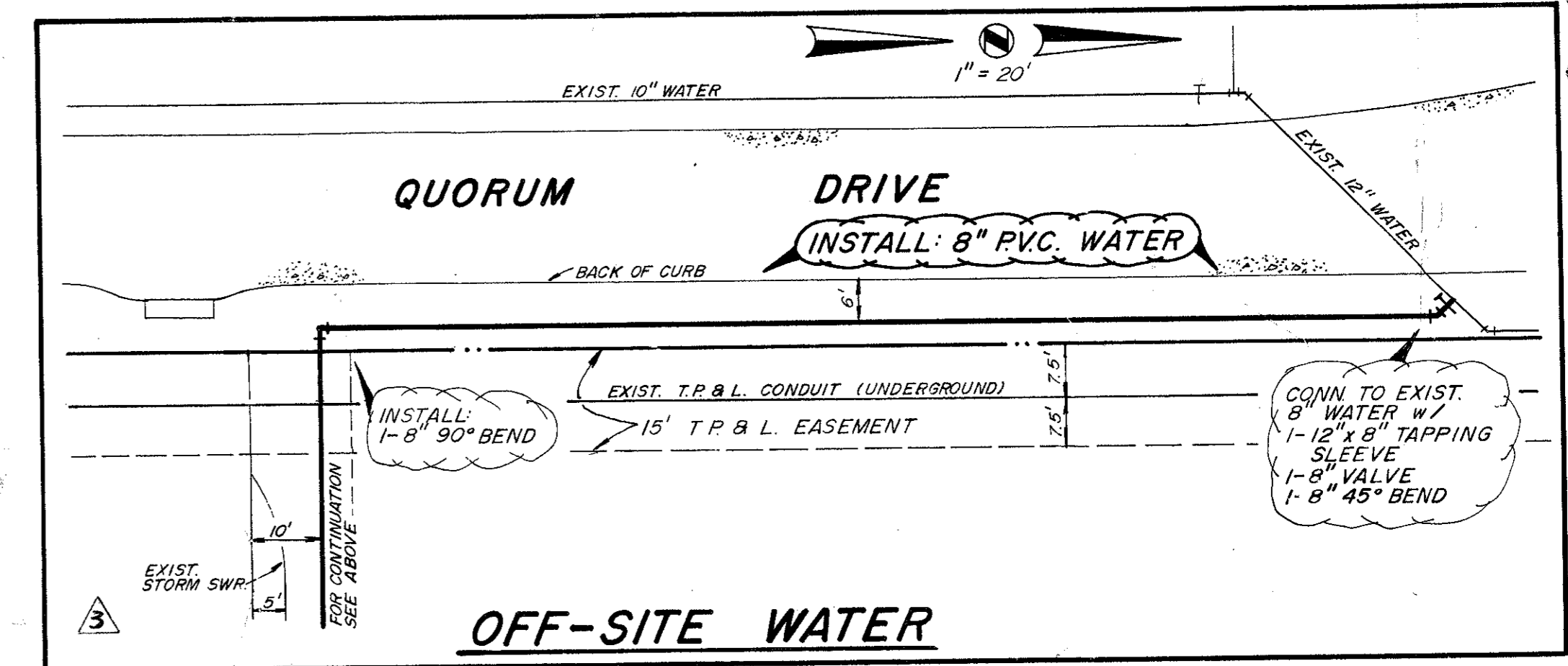
TYPICAL WATER AND SANI. SEWER EMBEDMENT DETAIL N.T.S.

WATER AND SANITARY SEWER GENERAL NOTES

1. ALL MATERIALS AND WORKMANSHIP SHALL CONFORM TO THE CITY OF ADDISON STANDARDS AND SPECIFICATIONS.
2. ALL WATER MAINS SHALL BE PVC SDR-18 WATER PIPE (BLUE BRUTE WITH WIRE TRACERS). TRACER TO BE #12 INSULATED COPPER.
3. ALL WATER MAINS SHALL HAVE MINIMUM COVER BELOW FINISHED GRADES AS FOLLOWS: 6" & 8" - 48" OR AS REQUIRED TO CLEAR OTHER UTILITIES.
4. ALL SEWER MAINS SHALL BE PVC SDR-35 SANITARY SEWER PIPE.
5. ALL PIPE EMBEDMENT SHALL BE AS DETAILED ON THIS SHEET.
6. ALL TEES, CONNECTIONS, BENDS, DEAD-ENDS, FIRE HYDRANTS, ETC., SHALL BE SECURELY BLOCKED AGAINST TRENCH WALLS USING 2000 PSI CONCRETE.
7. ALL TRENCH BACKFILL FOR THESE UTILITIES SHALL BE COMPACTED AS REQUIRED BY CITY, BUT IN NO CASE SHALL THE TOP 12" BE COMPACTED TO LESS THAN 90% AASHTO DENSITY WITH THE REMAINDER OF THE DITCH BEING COMPACTED TO THAT OF ADJOINING SOIL CONDITIONS.
8. CONTRACTOR TO VERIFY LOCATION OF ALL UTILITIES PRIOR TO BEGINNING WORK AND SHALL PROTECT EXISTING IMPROVEMENTS DURING CONSTRUCTION.
9. THE CONTRACTOR SHALL INCLUDE IN HIS BID PRICE ALL COSTS OF UTILITY CONNECTIONS, TAP FEES AND THE TESTING OF NEW MAINS REQUIRED BY THE CITY OF ADDISON TO COMPLETE THE WORK WHETHER THESE SERVICES ARE PERFORMED BY THE CONTRACTOR OR BY OTHERS.

PHASE I FF ELEVATION 628.65'

WATER	
8" WATER PIPE - 989 L.F.	
6" WATER PIPE - 304 L.F.	
MUELLER F.H. - 2	
6" VALVE - 3	
6" VALVE - 5	



NOTE THIS BASE SHEET WAS FURNISHED TO JACK R. DAVIS AND ASSOC. BY HKS BENCHMARK: SQUARE CUT ON TOP OF CURB OF PLAZA ISL. W/ NE CORNER OF LIBERTY PLAZA ELEV. - 622.15

AS-BUILT DATE: 1/13/86

JACK R. DAVIS & associates, inc. consulting civil engineers & surveyors 2902 Carlisle Street Dallas, Texas 75204

HARWOOD K SMITH & PARTNERS Architects/Engineers/Planners 1111 Plaza of the Americas North, LB 307 Dallas, Texas 75201 214-748-5261

HKS

t.f. stone companies dallas, texas

liberty plaza II

Revisions: (8/20/84) ADDENDUM #1 PC # 100000 STM SWR. RAILING WTR. LINE LOCATION 10-15-85 12-4-85 REVISE WATER

Sheet Title: WATER AND SANITARY SEWER PLAN Date: 7/22/84 Drawn: [Signature]

Sheet No: C 4 of sheets