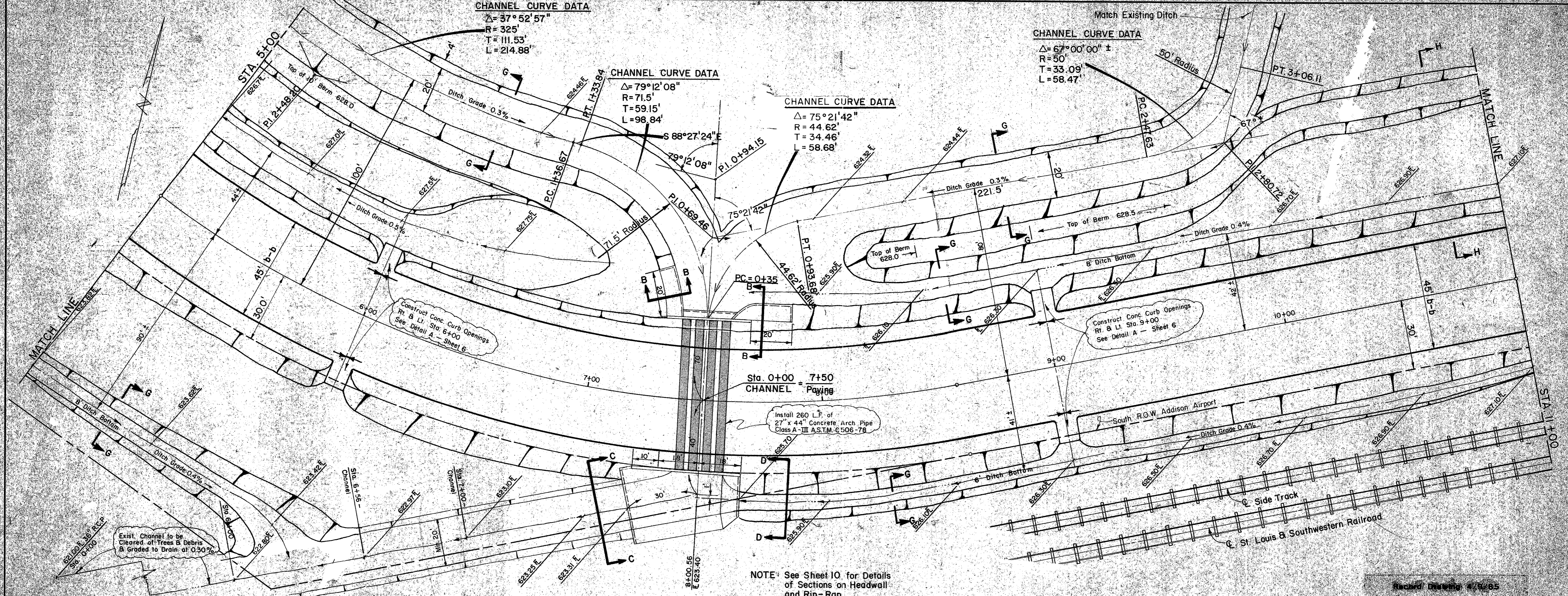


CHANNEL CURVE DATA
 $\Delta = 37^\circ 52' 57''$
 $R = 325'$
 $T = 111.53'$
 $L = 214.88'$

CHANNEL CURVE DATA
 $\Delta = 79^\circ 12' 08''$
 $R = 71.5'$
 $T = 59.15'$
 $L = 98.84'$

CHANNEL CURVE DATA
 $\Delta = 75^\circ 21' 42''$
 $R = 44.62'$
 $T = 34.46'$
 $L = 58.68'$

CHANNEL CURVE DATA
 $\Delta = 67^\circ 00' 00'' \pm$
 $R = 50'$
 $T = 33.09'$
 $L = 58.47'$

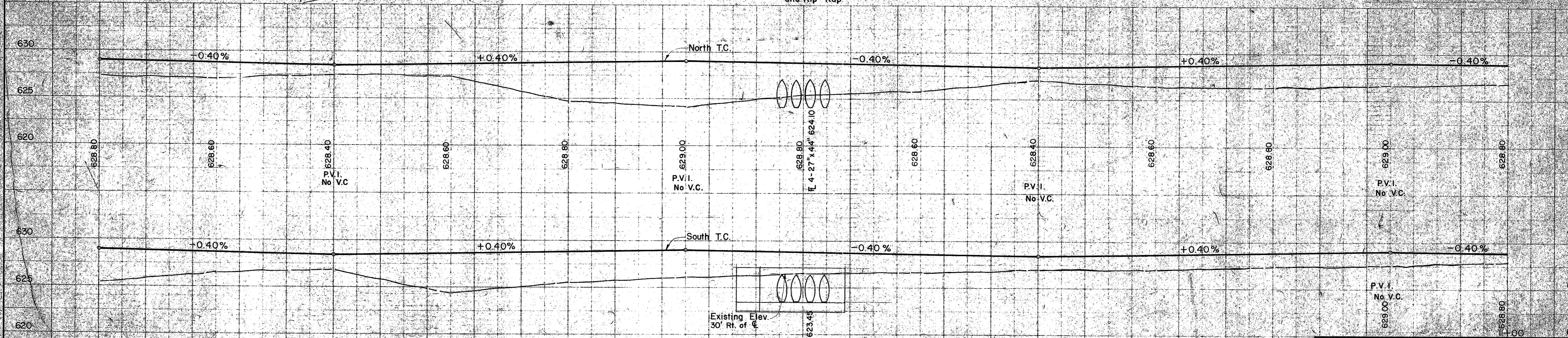


Construct Conc. Curb Openings
 Rt. & Lt. Sta. 6+00
 See Detail A - Sheet 6

Construct Conc. Curb Openings
 Rt. & Lt. Sta. 9+00
 See Detail A - Sheet 6

Exist. Channel to be
 Cleared of Trees & Debris
 & Graded to Drain at 0.30%

NOTE: See Sheet 10 for Details
 of Sections on Heddwall
 and Rip-Rap



CITY OF ADDISON
DRAINAGE
 Sta. 5+00 to Sta. 11+00
LINDBERG ROAD

GINN, INC. Consulting Engineers
 DESIGNED: HBU DRAWN: DTS DATE: AUG 1980
 APPROVED: CHECKED: SCALE: 1" = 20' SHEET 7 OF 17