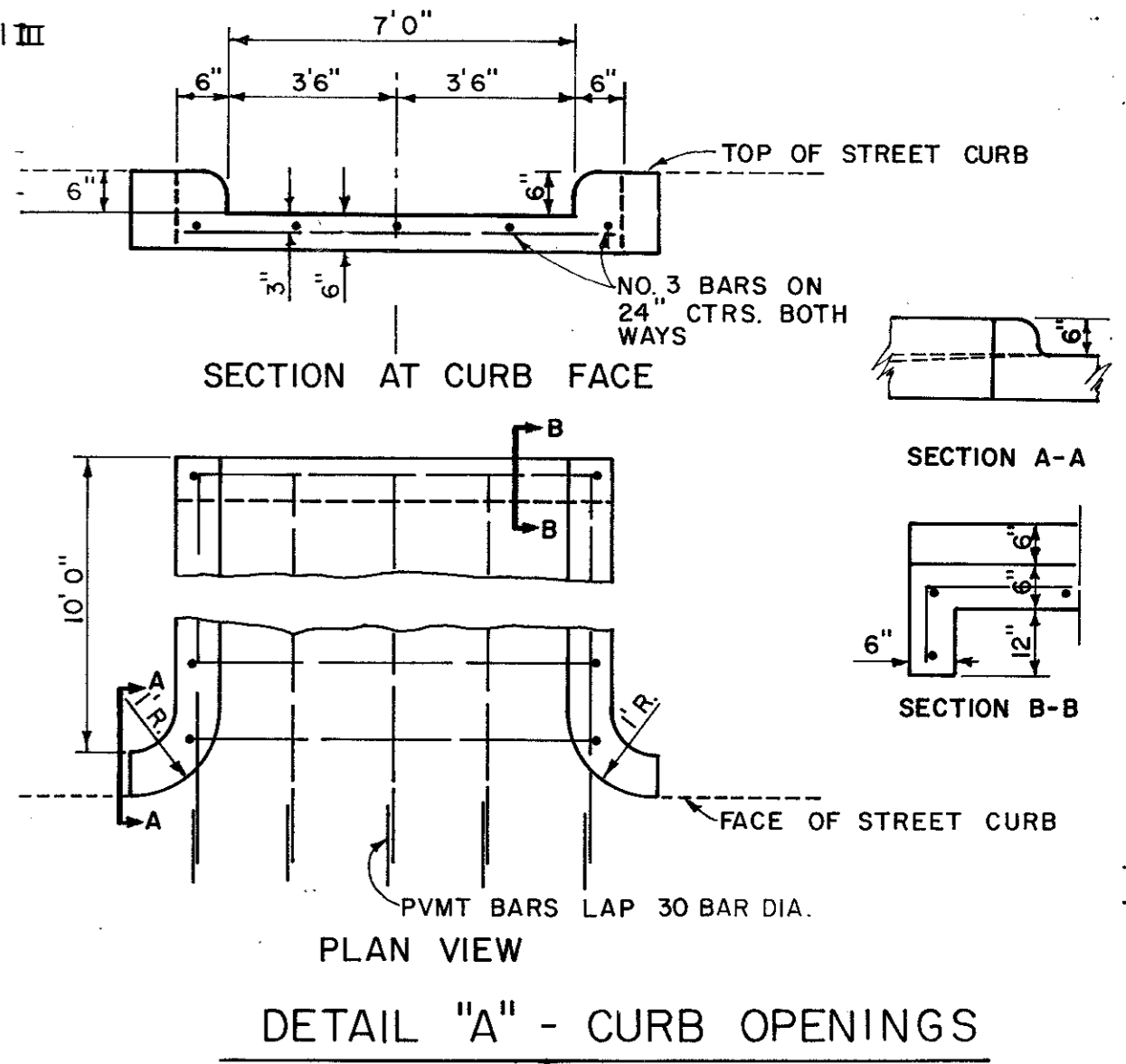
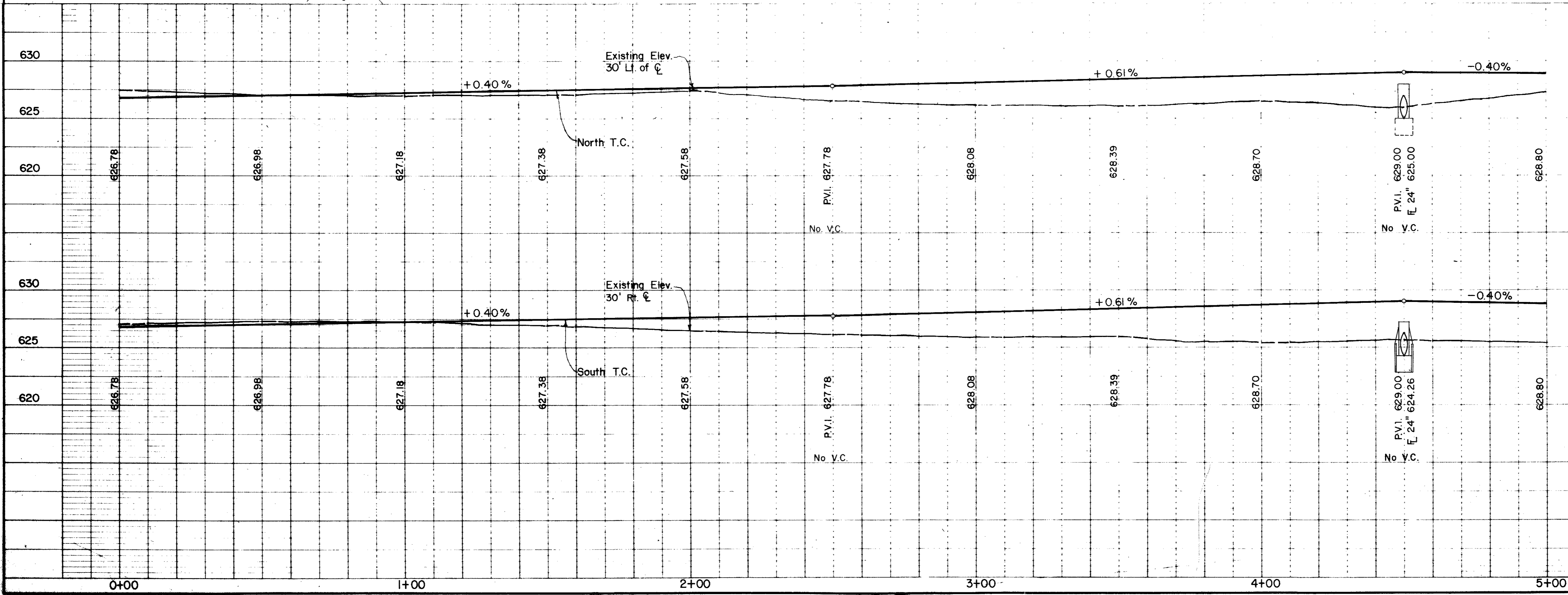


CL CURVE DATA
 $\Delta = 60^\circ 00' 00''$
 $R = 333'$
 $T = 192.26'$
 $L = 348.72'$

NOTE:
 Maximum Allowable Slope 3:1



B.M. #1 - \square On Conc. Walk At S.E. Corner Of Bldg. At 1530' Midway Rd (Elev. 621.43)
 B.M. #2 - Open Nut Of F.H. At Sta. 0+35, 30' S. Lt. Of New E Lindberg (Elev. 630.19)



Record Drawing: 4/9/85

1-27-81	Widened Drive	DATE	REVISION	G.F.	BY
					620

CITY OF ADDISON

DRAINAGE

Sta. 0+00 to Sta. 5+00

LINDBERG ROAD

GINN, INC., Consulting Engineers

DESIGNED - HBJ	DRAWN - DTS	DATE - AUG 1980	FILE
APPROVED -	CHECKED -	SCALE - 1" = 20'	SHEET 6 OF 17