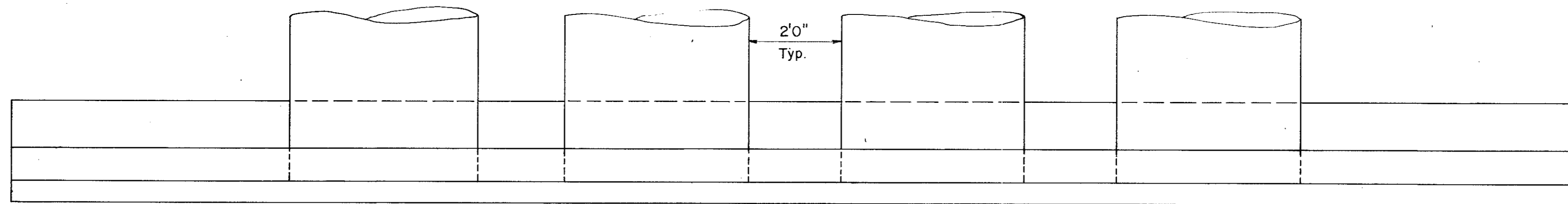
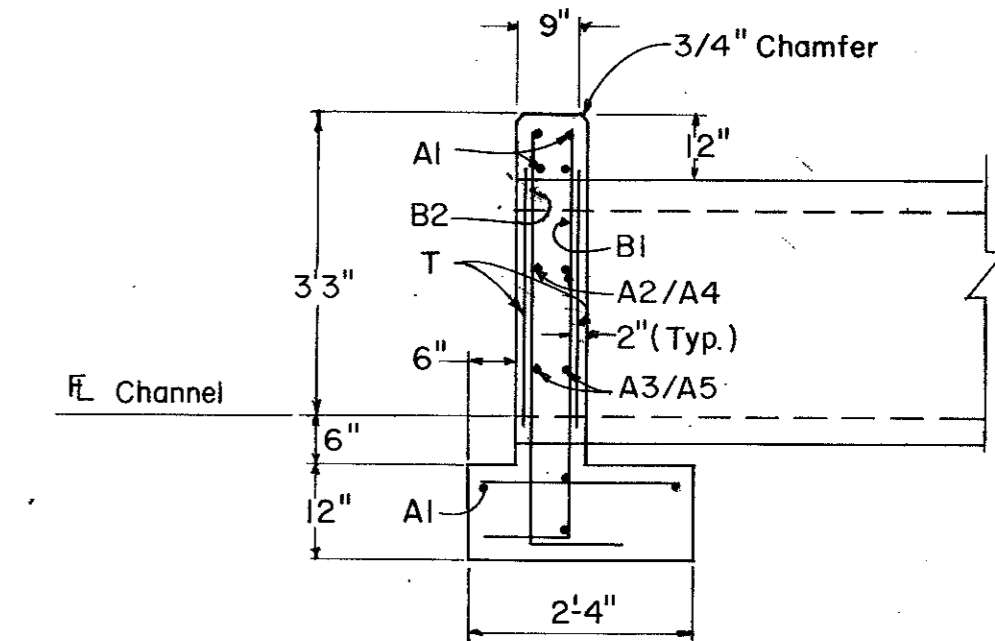


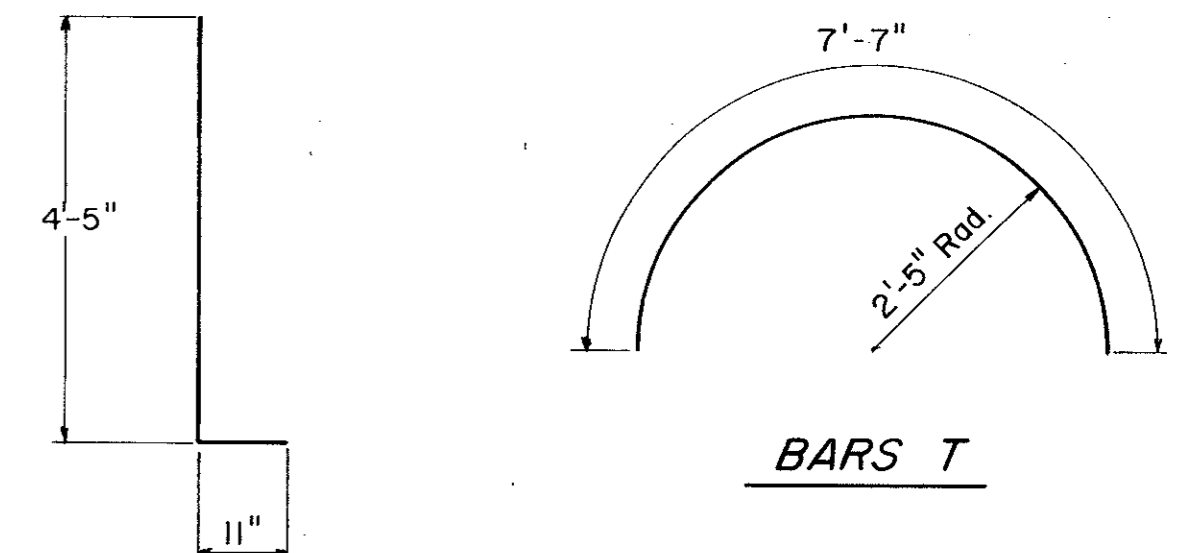
HEADWALL ELEVATION



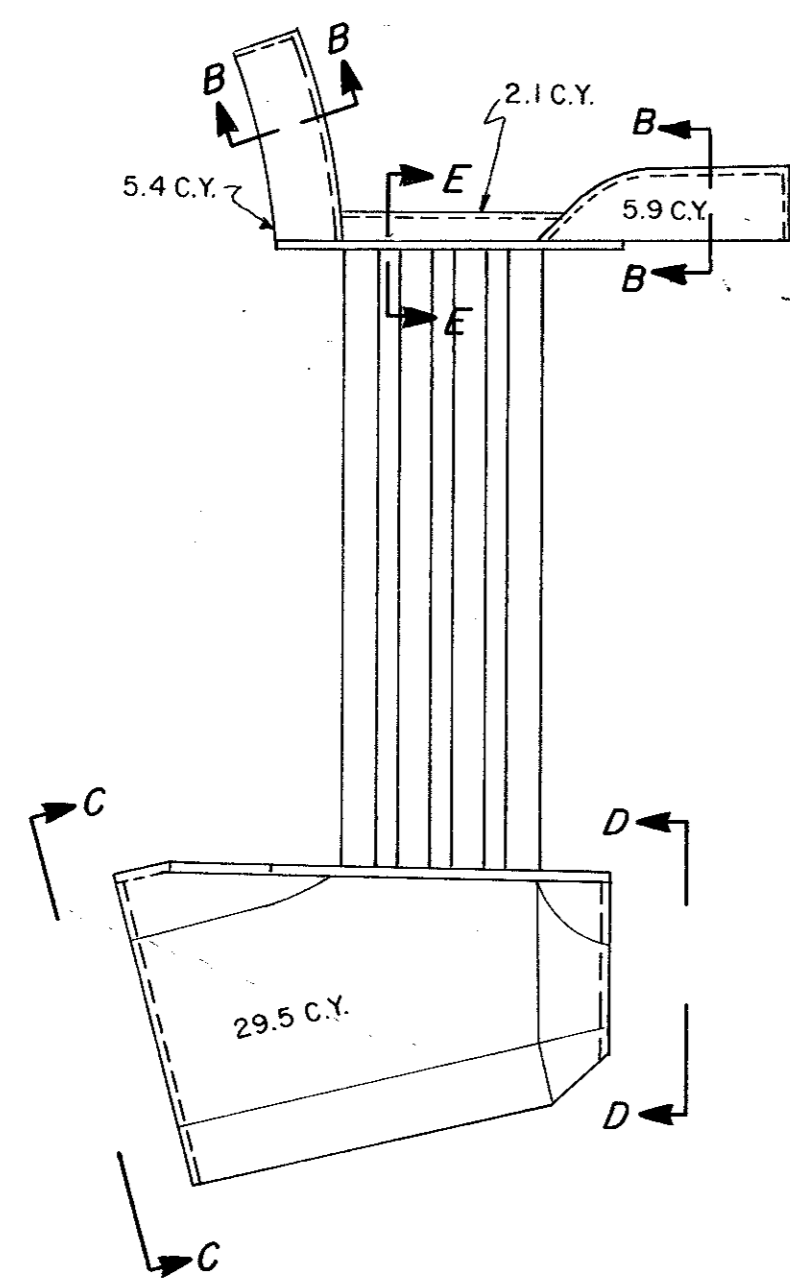
HEADWALL PLAN



SECTION A-A

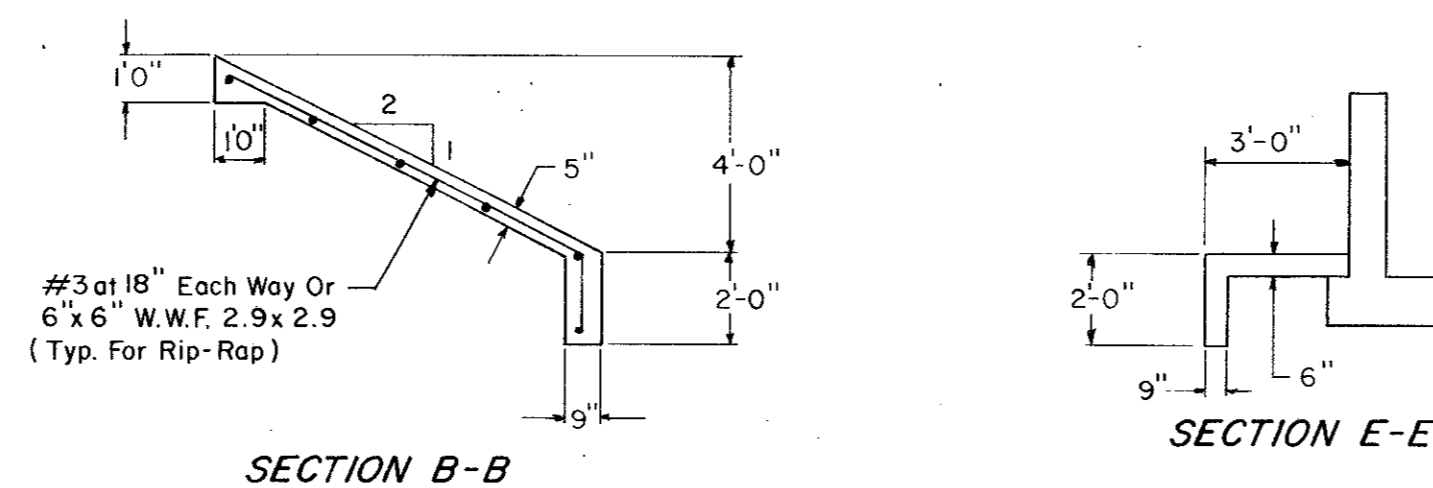


BARS BI & B2



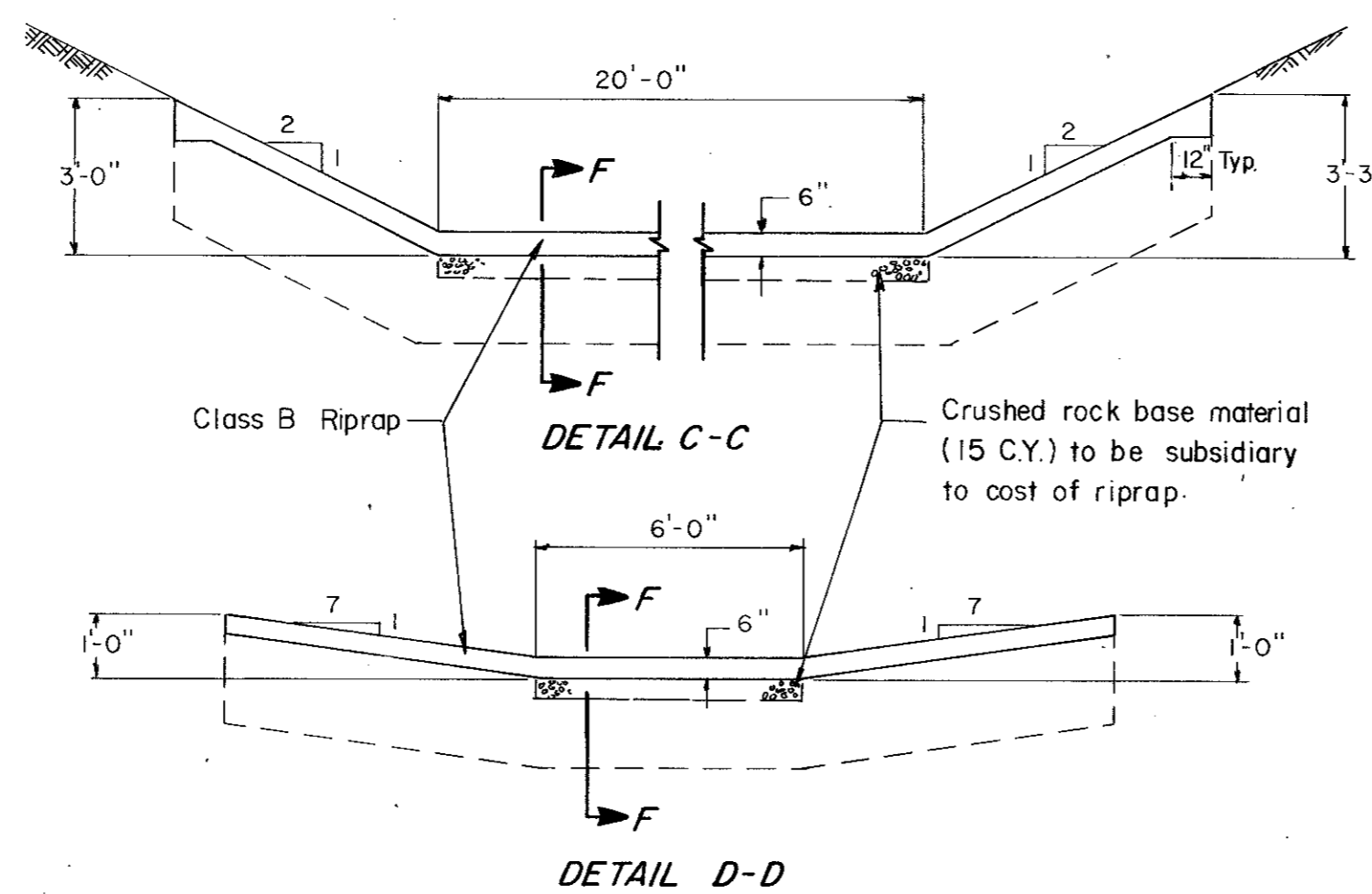
RIP-RAP DETAIL

Class B Rip-Rap™ 42.9 C.Y.
* Cost Of Reinforcing Steel To Be Included In Cost Of Rip-Rap.



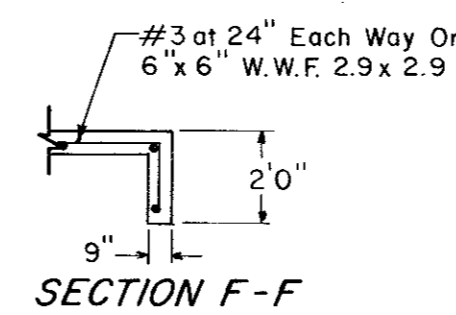
SECTION B-B

SECTION E-E

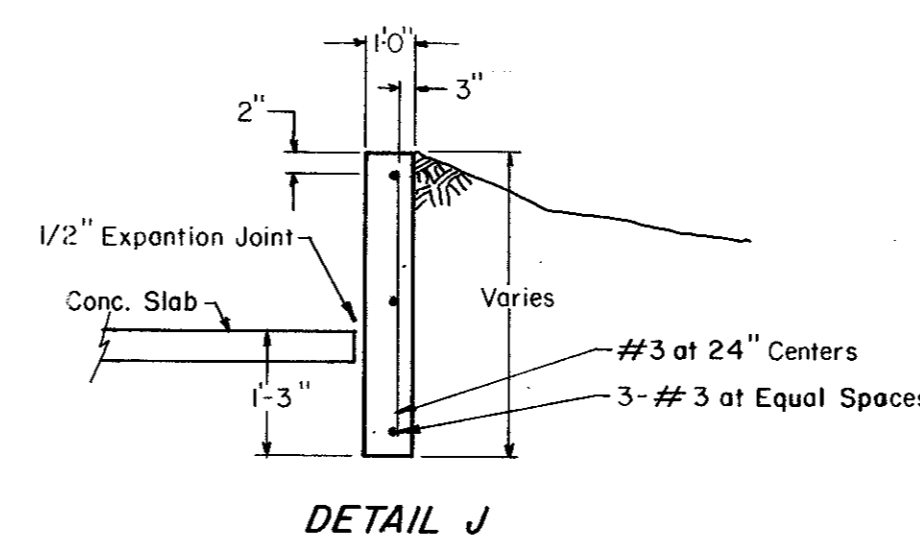


DETAIL C-C

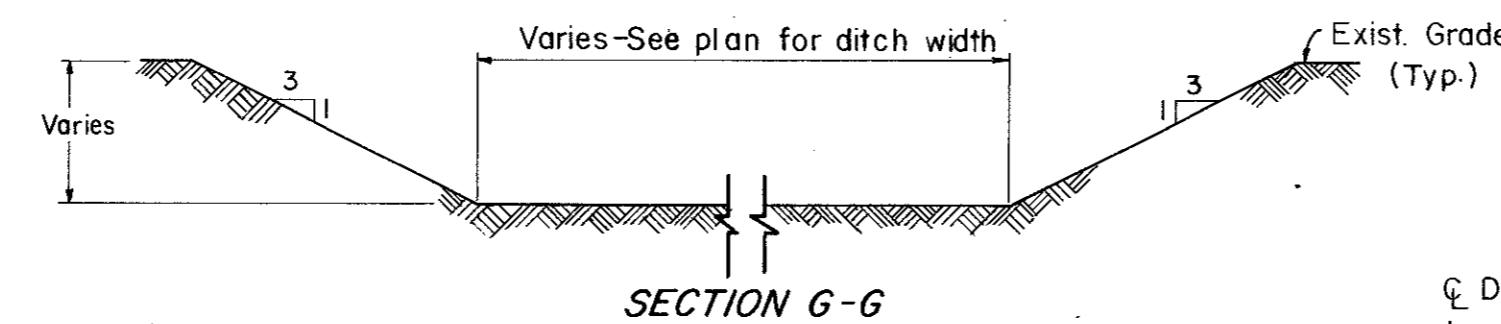
DETAIL D-D



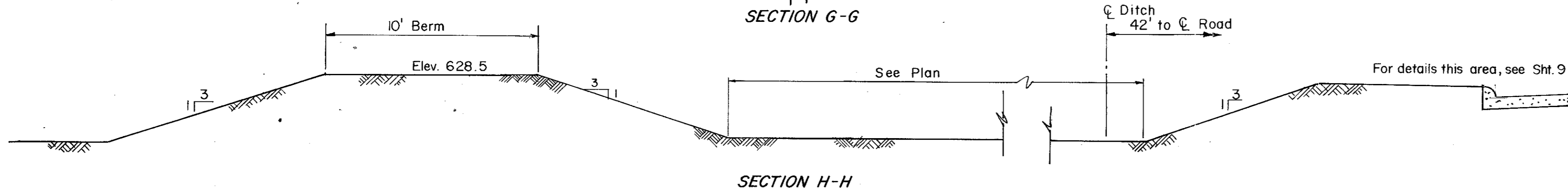
SECTION F-F



DETAIL J



SECTION G-G



SECTION H-H

HEADWALL BAR SCHEDULE					
Bar	Type	Size	No.	Length	Weight
A1	Str.	#4	16	35'8"	381
A2	do	#4	8	6'4"	34
A3	do	#4	8	6'1"	32
A4	do	#4	12	2'3"	18
A5	do	#4	12	1'10"	15
A6	do	#4	12	11'2"	90
B1	Bt	#5	62	5'4"	345
B2	do	#5	46	5'4"	256
C	Str.	#5	82	2'0"	171
T	Bt	#5	16	7'7"	127

ESTIMATED QUANTITIES

Class A Concrete (Hdwl.) 13.0 C.Y.
Reinforcing Steel (Hdwl.) 1,469 LB.

General Notes:

Max. size coarse aggregate 1-1/2"
All surfaces of headwalls exposed to view shall receive a surface finish as provided in the pertinent specifications.

Cost of excavation, Class B bedding, and backfilling for 24" RCP and arch pipe to be included in the cost of laying pipe.

Record Drawing 4/9/85

CITY OF ADDISON

DRAINAGE DETAILS

LINDBERG ROAD

GINN, INC., Consulting Engineers
DESIGNED - HBJ DRAWN - DTS DATE - AUG. 1980 FILE
APPROVED - CHECKED - SCALE - NONE SHEET 10 A OF 17

LINDBERG RD. EXTENSION RECORD 4/9/85