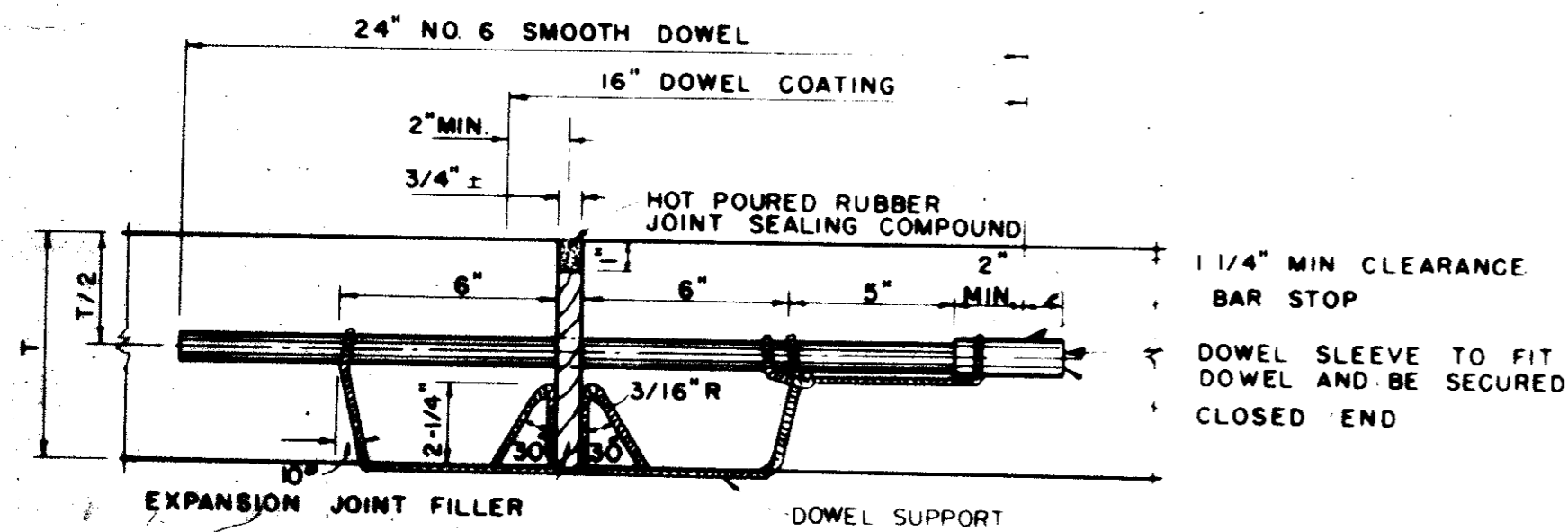


SPACING DIAGRAM FOR JOINTS

IDENTICAL FOR STREETS (CONCRETE PAVEMENT OR BASE) AND ALLEYS EXCEPT THAT EXPANSION JOINTS FOR ALLEYS SHALL BE PLACED AT THE END OF THE RETURN IN LINE WITH THE PROPERTY LINE SPACING OF EXPANSION JOINTS SHALL NOT EXCEED 600 FEET

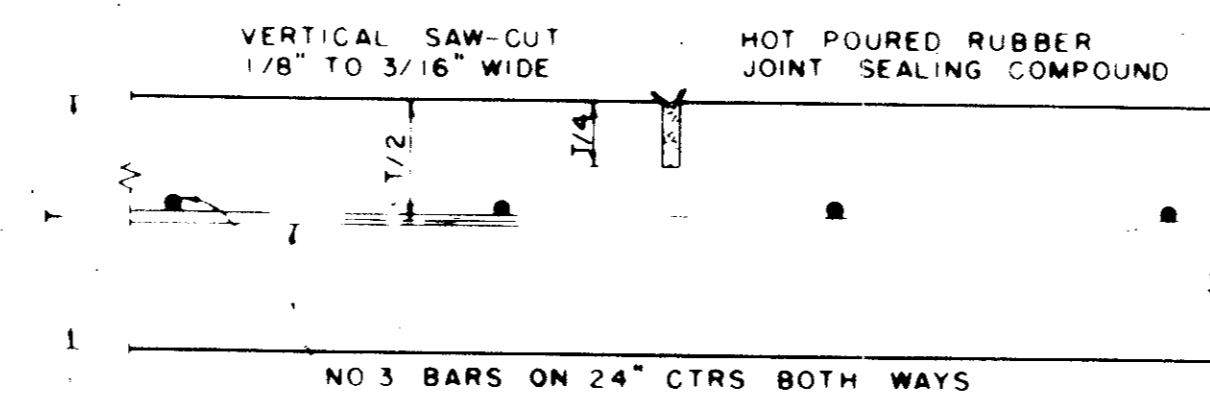


TRANSVERSE EXPANSION JOINT

IDENTICAL FOR STREETS & ALLEYS

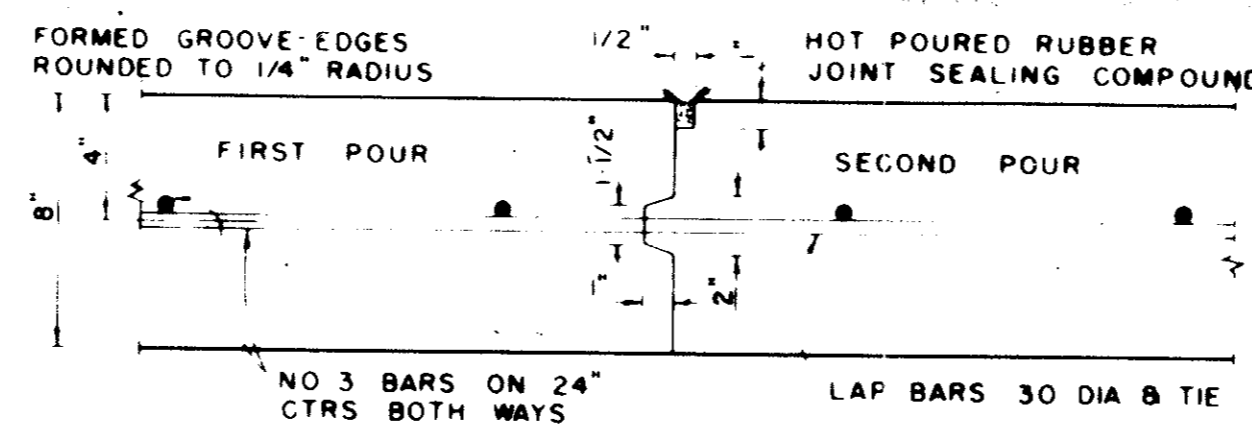


SPACING DIAGRAM FOR DOWELS AT EXPANSION JOINTS



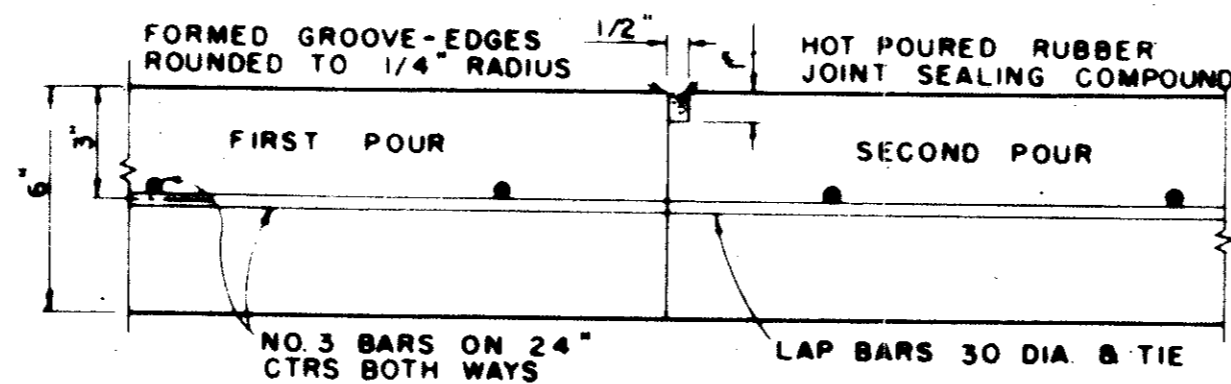
SAWED DUMMY JOINT

IDENTICAL FOR STREETS AND ALLEYS EXCEPT ALLEY LONGITUDINAL REINFORCEMENT BARS



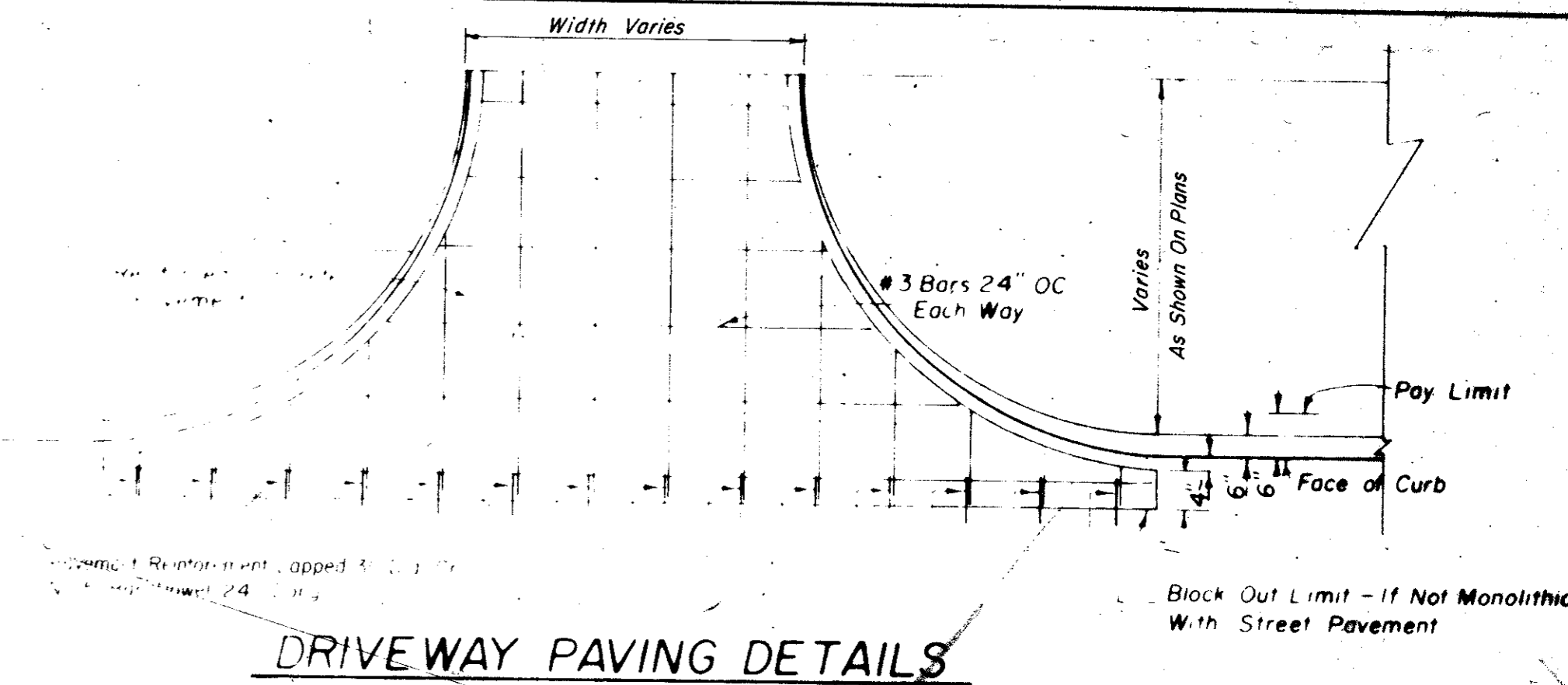
CONSTRUCTION JOINT

FOR 8" THICKNESS PAVEMENT OR BASE

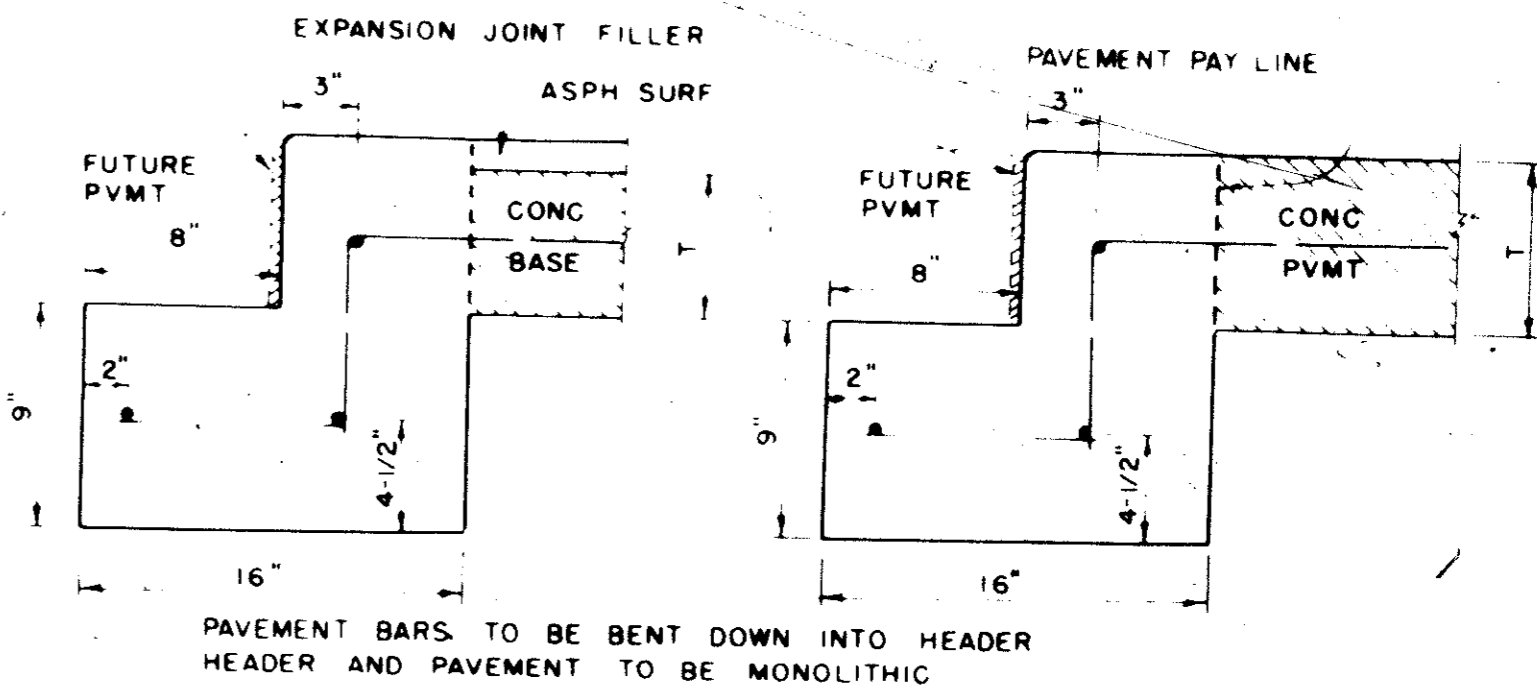


CONSTRUCTION JOINT

FOR 6" THICKNESS PAVEMENT OR BASE
IDENTICAL FOR STREETS AND ALLEYS EXCEPT ALLEY LONGITUDINAL REINFORCEMENT BARS

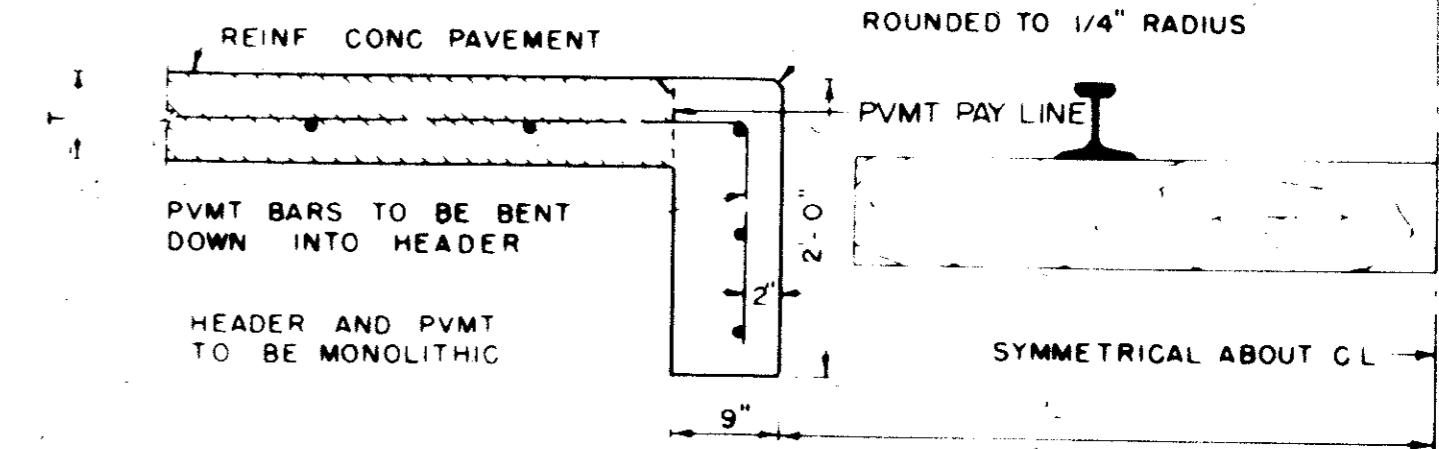


DRIVEWAY PAVING DETAILS

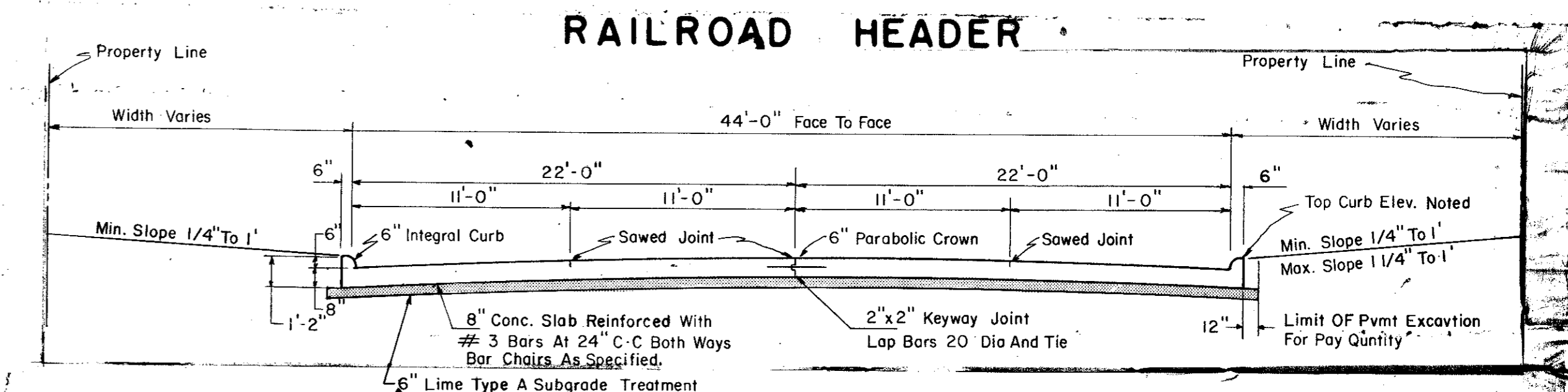


STREET HEADER

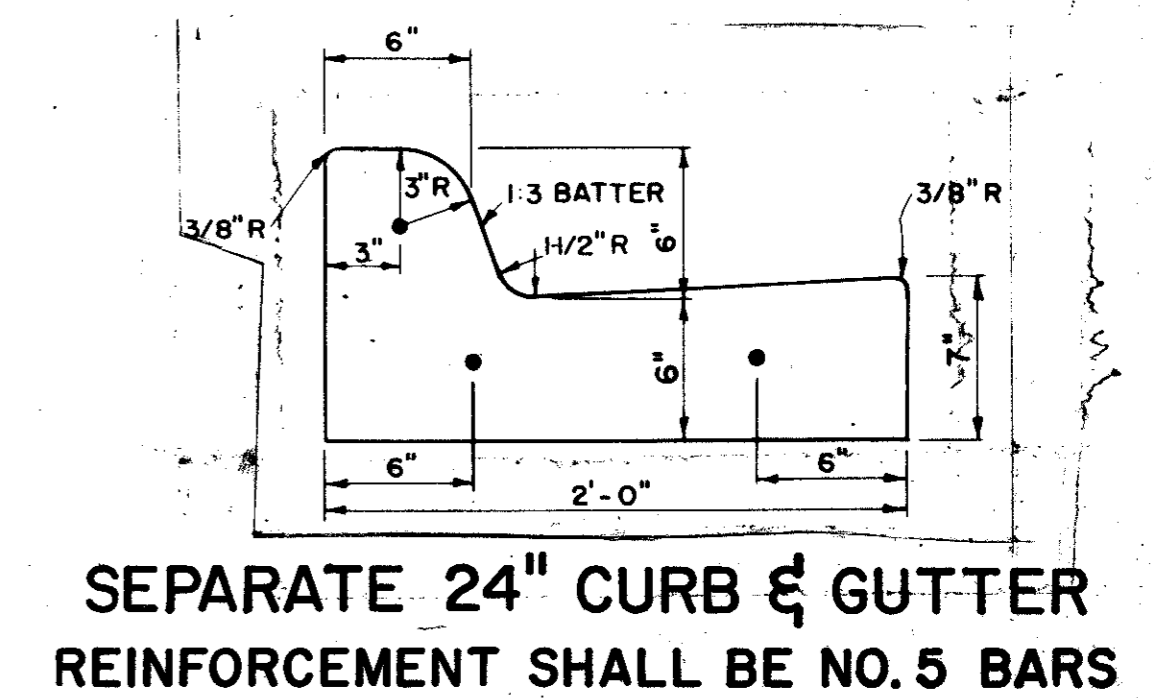
FOR ASPHALT PAVEMENT ON CONC BASE, TREAT THE SURFACE AS DETAILED BELOW FOR STREET HEADER
ALL WORK BETWEEN HEADERS TO BE DONE BY OTHERS UNLESS OTHERWISE SPECIFIED



RAILROAD HEADER



TYPICAL 45' PAVING SECTION



Record Drawing 4/9/85

CITY OF ADDISON			
PAVING DETAILS			
LINDBERG ROAD			
GINN, INC., CONSULTING ENGINEERS			
DESIGNED-H.B.J.	DRAWN-R.B.	DATE- Oct, 1980	FILE
APPROVED-HWG	CHECKED-	SCALE- NONE	SHEET 3 OF 7