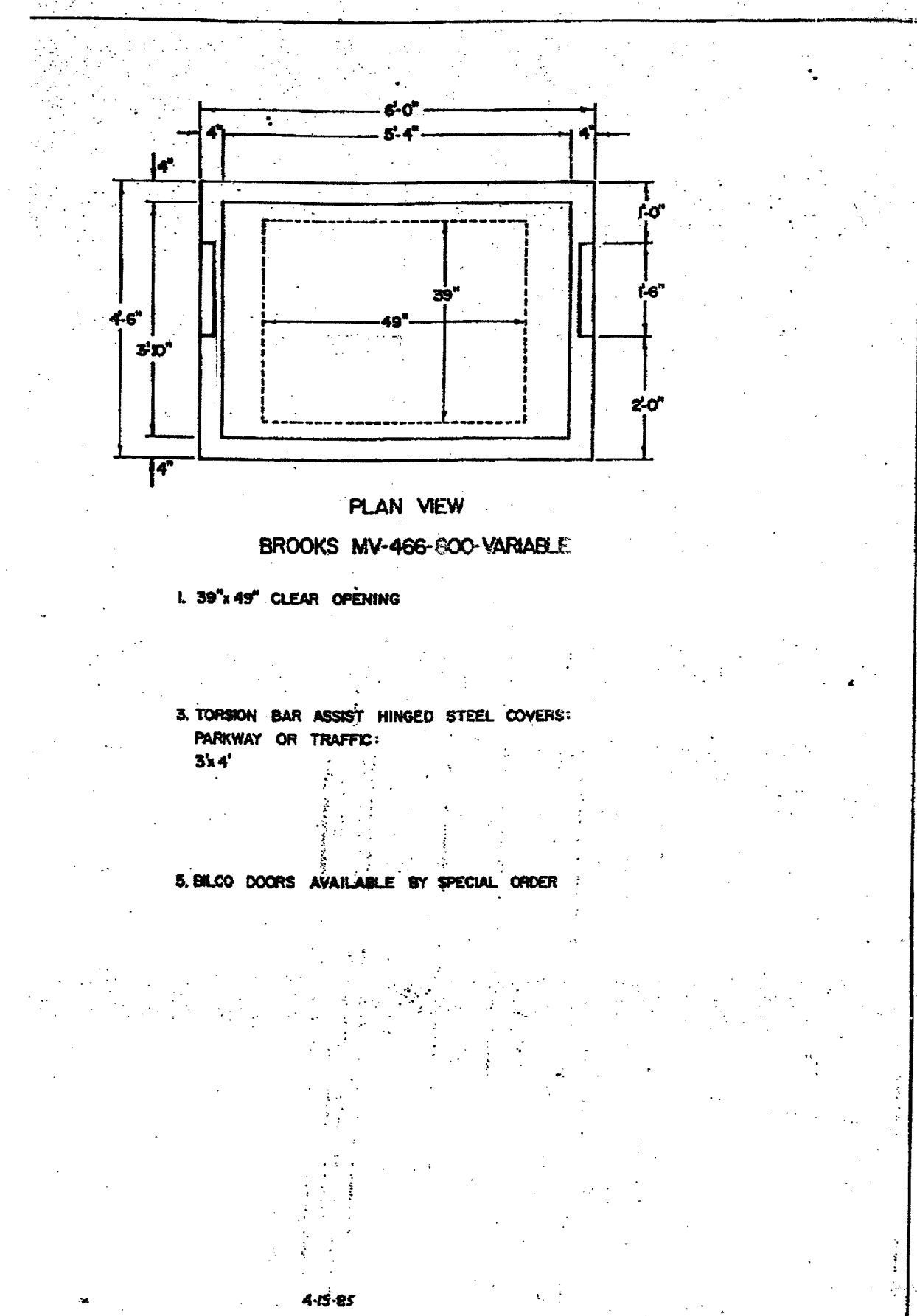
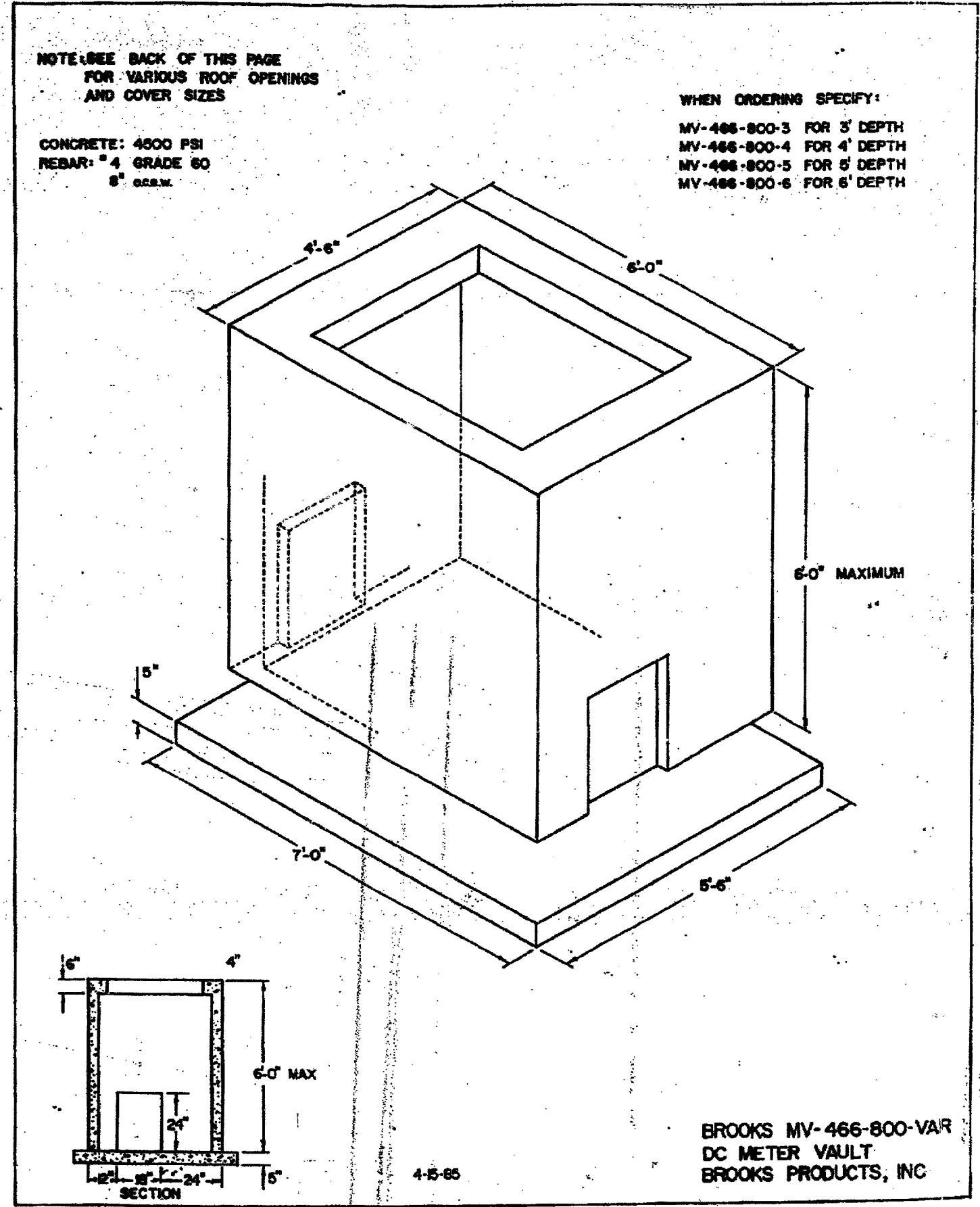


USER-GSW
 TEL-FILES Form.tbl
 SCALE-20.000000 - SCAL-20.000000 - R01-270.000000 - R01-270.000000
 P:\Projects\mtr\station\addison\mtr\border2.dgn - ON-1-30-03-53
 D:\en\projects\mtr\station\addison\mtr\border2.dgn



Hersey

PRODUCTS

Model ER-1

Electronic Encoder Register

Features

APPLICATIONS: The Hersey Model ER-1 Electronic Encoder Register is available on Hersey meters for remote reading of hard-to-access commercial, institutional and residential installations. With minimal cost and labor, it also can be retrofitted to virtually any Hersey meter already in service. The Model ER-1 register is compatible with any of the meter reading methods in the Hersey AMR System, which simplifies migration and provides additional cost savings.

DESCRIPTION: The Model ER-1 register uses solid-state circuitry to generate two electronic switch closures per revolution of the sweep hand. It provides extremely high "sixth wheel" resolution for greater accuracy. It also avoids metal-to-metal contacts which could corrode or wear. For direct reading, the register face has a low-flow (leak) detector, a straight reading odometer with large, easy to read numerals, and a sweep hand. It can be specified in US gallons, cubic feet, cubic meters, or Imperial gallons.

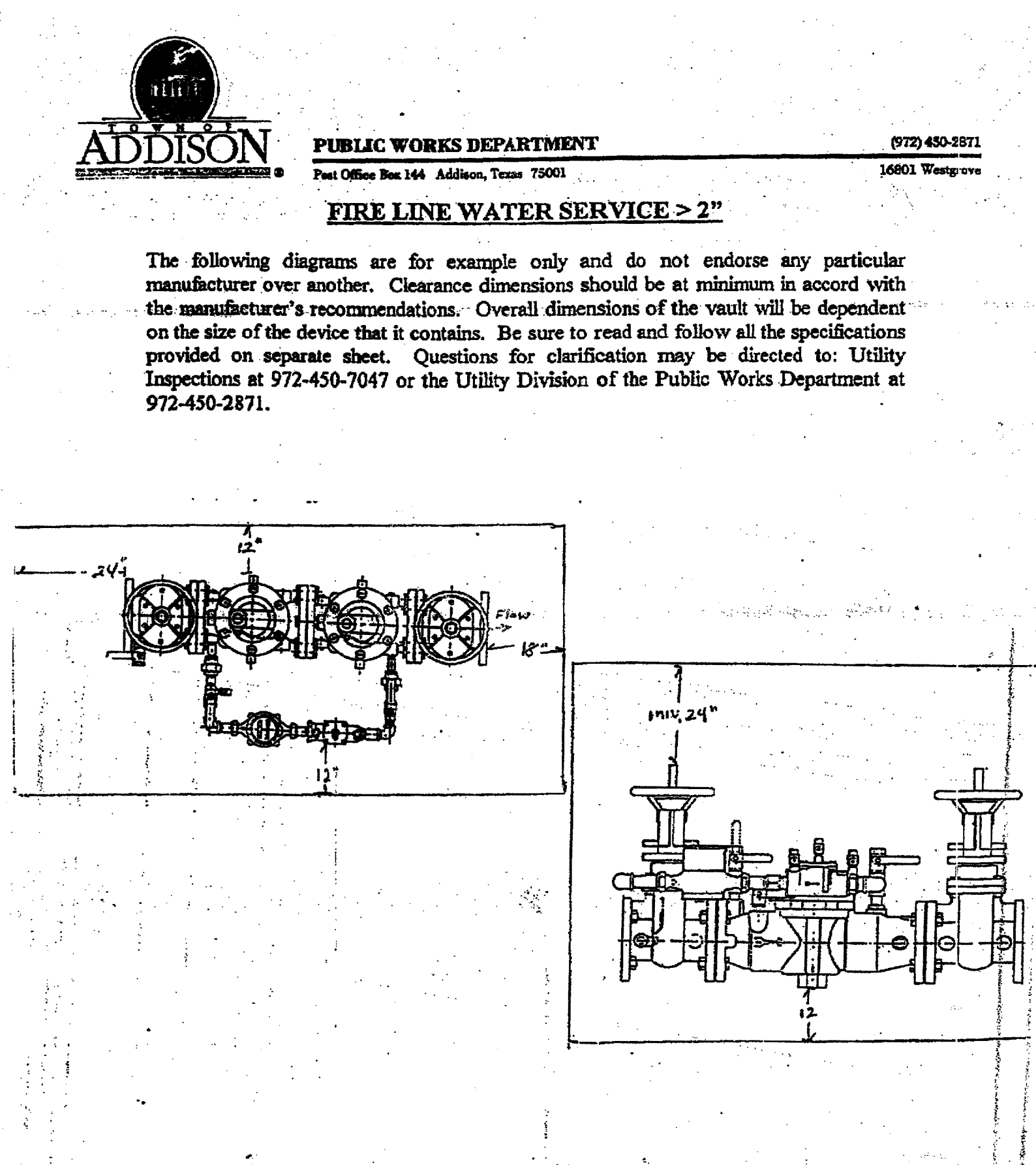
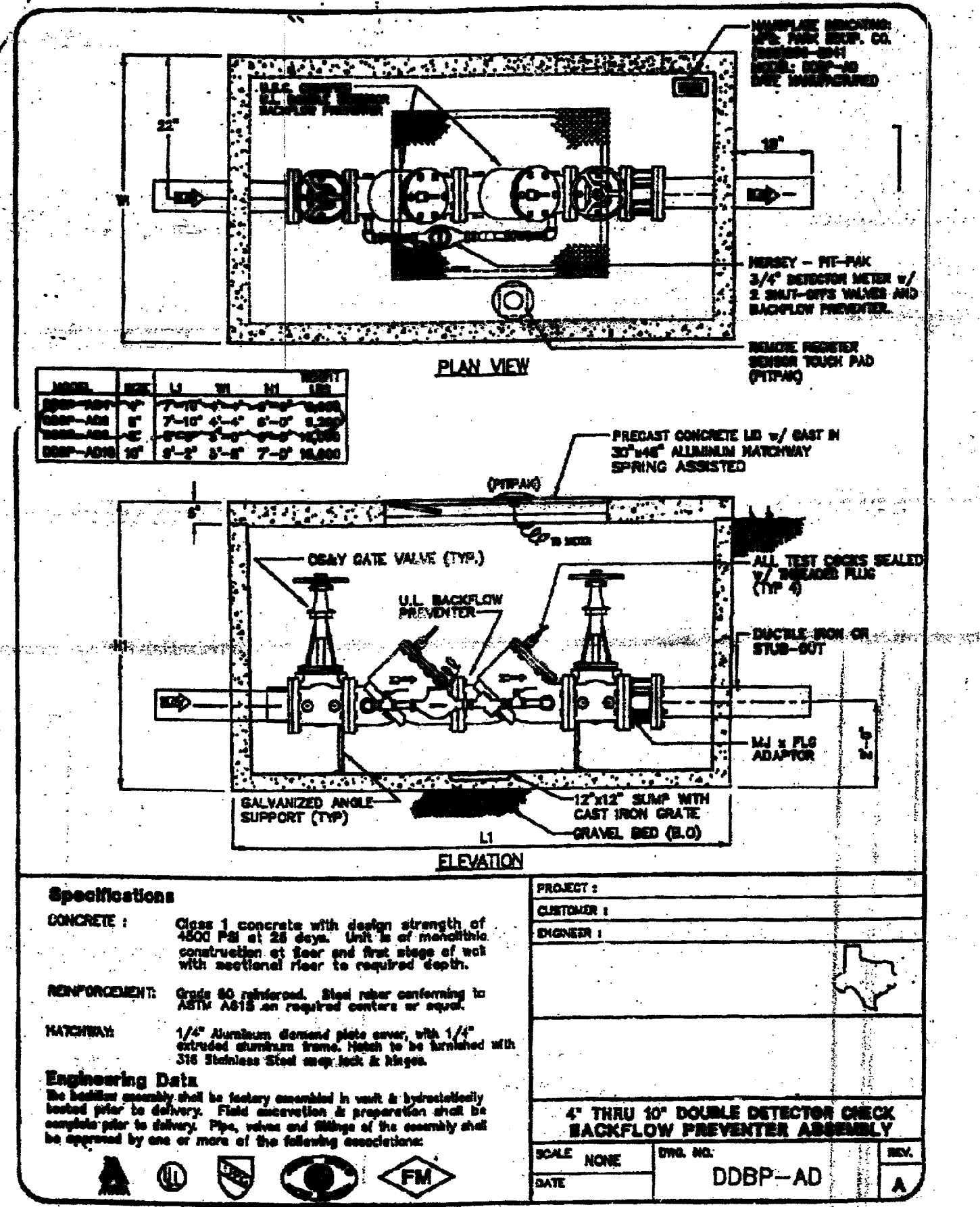
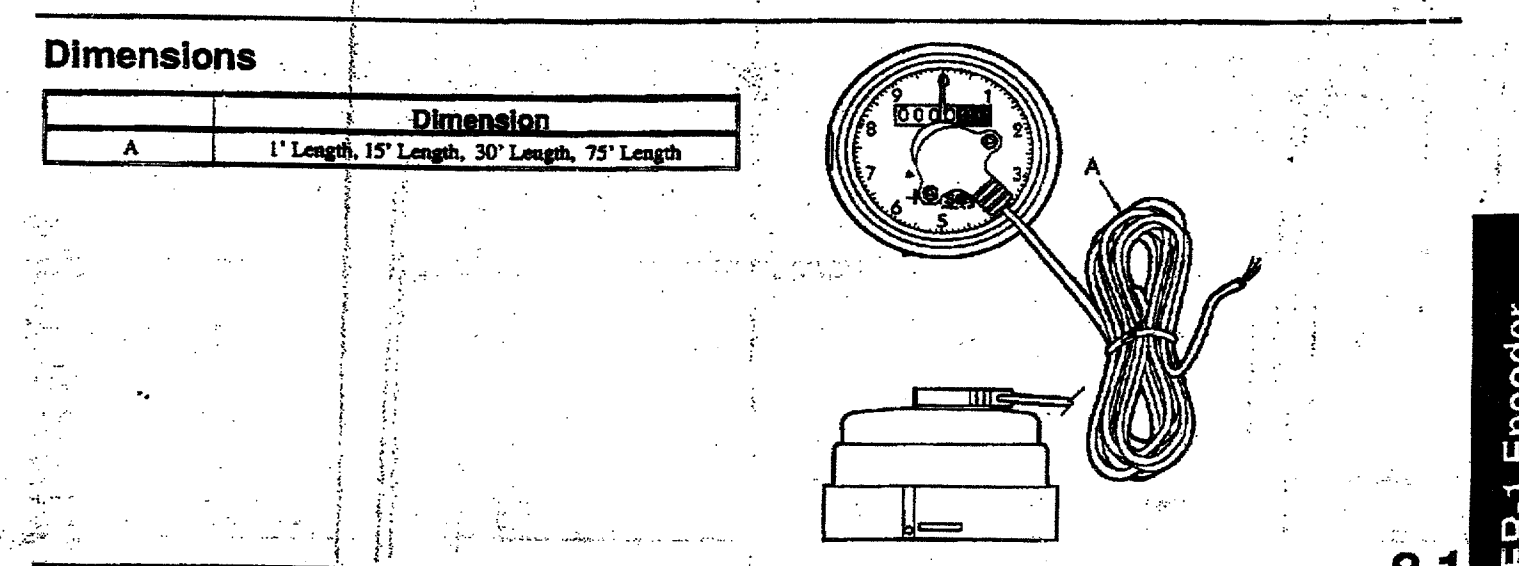
CONFORMANCE TO STANDARDS: Complies with AWWA Standard C707 for Encoded Remote Reading Systems when used with the Hersey Remote Reading System.

CONSTRUCTION: The fully encapsulated electronics do not penetrate the lens, assuring that the register is permanently sealed. Tamper resistant screws hold the electronics securely to the lens, and the register mounting has an integral tamper-proof feature. The connection between the electronics and the register's wiring cable is watertight.

Materials and Specifications

(Typical Register Shown)

- MODEL ER-1
- STANDARDS Complies with AWWA Standard C707 for Encoded Remote Reading Systems (when used with the Hersey AMR System)
- REGISTER TYPE Electronic encoding with visual odometer
- CABLE 3-wire (2-wire if alarm circuit not connected)
- TEMPERATURE RANGE -33F to 150F



Model ER-1 Parts

Electronic Encoder Register

Hersey

PRODUCTS

Ref. No.	Description	Part No.
1	Register Housing Base	C3925
2	Register Locking Pin (Plastic)	A12658
3	Register Housing Insert	C3582
4	ER-1 Non-encapsulated Module with 1" wire	B7890
	ER-1 Encapsulated Module with 15' wire	B81040
	ER-1 Encapsulated Module with 30' wire	B81041
	ER-1 Encapsulated Module with 75' wire	B81042
5	Tri-wire Screw	A57281
	Tri-wire Tool (screwdriver style, less bit)	ERTTOOL
	Tri-wire Tool Bit	ERTTOOLBIT
	O-ring	98301

* Not shown.

8.2

Hersey
 Products, Inc.
 2800 E. 23rd St.
 Dallas, Texas 75228
 Phone: (214) 343-1111
 Fax: (214) 343-1112
 Telex: 250000 (In USA)
 Telex: 250000 (In USA)
Muller Co.
 A Division of Hersey Products, Inc.

ADDISON
PUBLIC WORKS DEPARTMENT
Post Office Box 9010 Addison, Texas 75001-9010

(972) 450-2871
16801 Westgrove

FIRE PROTECTION SYSTEM REQUIREMENTS FOR FINAL ACCEPTANCE

To whom it may concern:

The following will be required before the final acceptance of the underground portion (from water main to riser) of your fire protection system.

- A State Fire Marshal Certificate of Registration for sales, installation, and service of fire protection sprinkler systems must be on file with the Town of Addison Fire Marshal's office. Copy to Public Works Inspector.
- The name and license number of the Responsible Managing Employee must be on file with the Town of Addison Fire Marshal's Office. Copy to Public Works Inspector.
- "As-Built" plans of the underground system, which have been signed by the Responsible Managing Employee, must be submitted to the Public Works Inspector.
- Visual inspection, pressure test, and flush test will have been satisfactorily completed and verified by the Public Works Department.

After completion of the above items, a letter of acceptance will be sent to the contractor, and a copy will be sent to the Town of Addison Fire Marshal's Office.

ADDISON
PUBLIC WORKS DEPARTMENT
Post Office Box 9010 Addison, Texas 75001-9010

(972) 450-2871
16801 Westgrove

FIRE LINE WATER SERVICE > 2"

Contractors and/or plumbers are responsible for compliance with the following specifications:

All fire line services shall include an approved Double-Check Detector Assembly or Reduced Pressure Zone Detector Assembly at the point of connection to the City's water supply. An approved assembly shall be taken from the most current edition of the List of Approved Backflow Prevention Assemblies as published by the Foundation for Cross-Connection Control and Hydraulic Research, University of Southern California.

The Assembly shall be placed in a concrete vault of sufficient size to allow for convenient testing and/or repair. The vault shall have a concrete floor, and any joints shall be sealed to prevent infiltration of mud and silt. The vault doors shall be aluminum of the "Bilco" type (but not necessarily that brand), lockable, large enough to allow removal of the complete Assembly as a unit, and placed directly over the unit for ease of access. RPZ assemblies must be installed above ground according to manufacturer's specs, and protected from freezing and/or tampering with an approved enclosure.

The Assembly and piping shall be supported with manufactured supports designed for such application. (For clarification, reference Specification for Standoff Pipe Supports as manufactured by Material Resources Co., Hillsboro, Oregon, 503-693-0727 - Models S89 or S92.

The Assembly shall be complete with the approved appurtenances. The detector meter shall be any one of the following: Hersey Model 430, Hersey MVR-50.

The detector meter piping shall have an in-line or angle curb-stop or an approved ball valve before the meter and the compatible Double-Check or RPZ Assembly after the meter, and a test port after the assembly.

Meters > 18" deep shall be equipped with Hersey ER-1 registers and PitPak for connecting to touchless AMR system.

Mainline piping shall include a mechanical-joint flange adapter on the inlet end of the Assembly to facilitate future removal or replacement of the Assembly.

The contractor shall be responsible for having the Assembly tested by a "certified" Fire-Line Tester upon installation of the system, and prior to final, continuous connection to the City's water supply. A copy of the report shall be supplied to the Town of Addison Utility Division of the Public Works Department.

A meter deposit is required for all meters prior to initiation of service. Application and deposit will be made to the Town of Addison Utility Billing Department (972-450-7081) by the party responsible for the water bill.

See Figure FL-1 for dimensions of the vault etc. Deviations from this standard may be considered at the discretion of the Director of Public Works only insofar as the protection of the Public Water Supply is not compromised.

08/04/95 Updated 05/02/97

REVISION NO.	DESCRIPTION	BY	DATE

TOWN OF ADDISON, TEXAS
ENGINEERING DEPARTMENT

LINDBERGH WATER MAIN REPLACEMENT

FIRE VAULT DETAIL

TOWN OF ADDISON STANDARDS

DESIGN: _____

DRAWN: _____

APPROVED: _____

DATE: SEPT. 2001

SCALE: _____

SHEET _____

4 OF 6