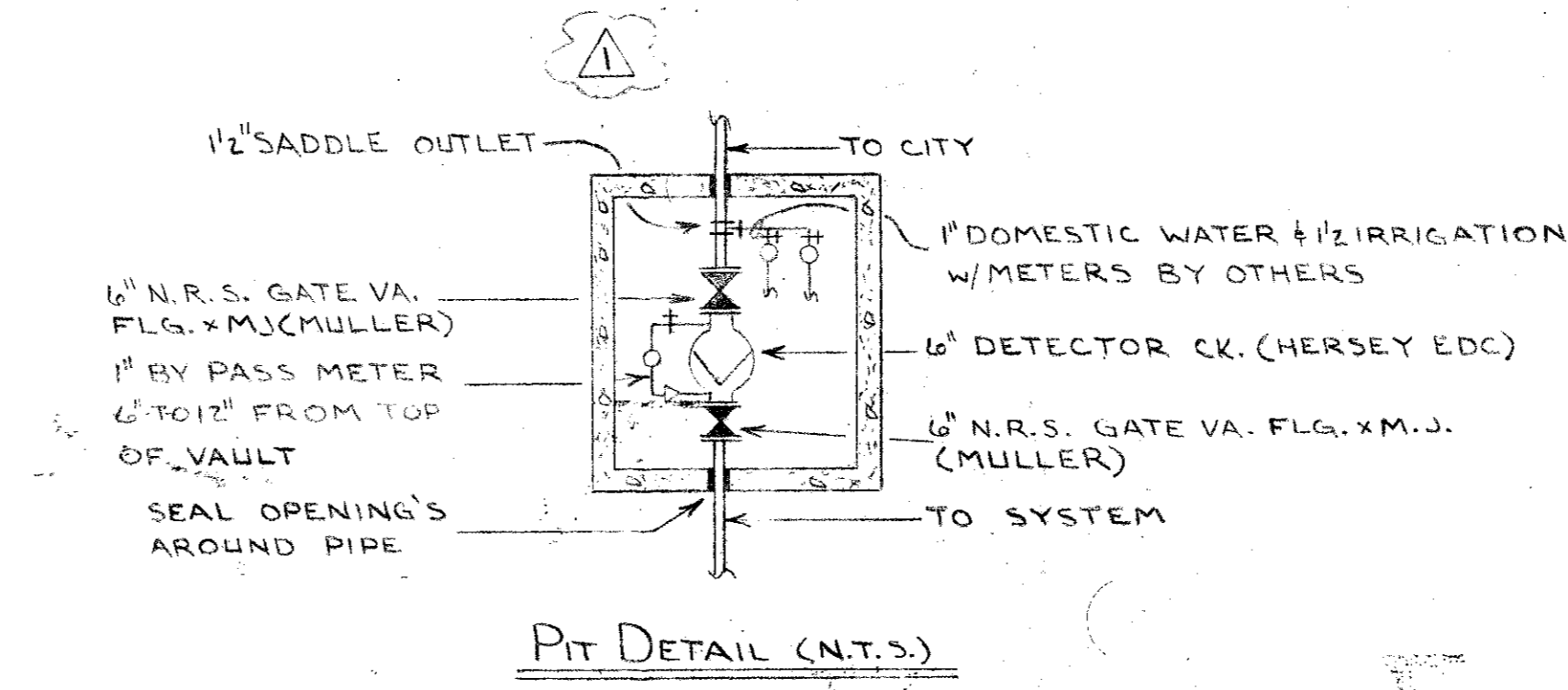
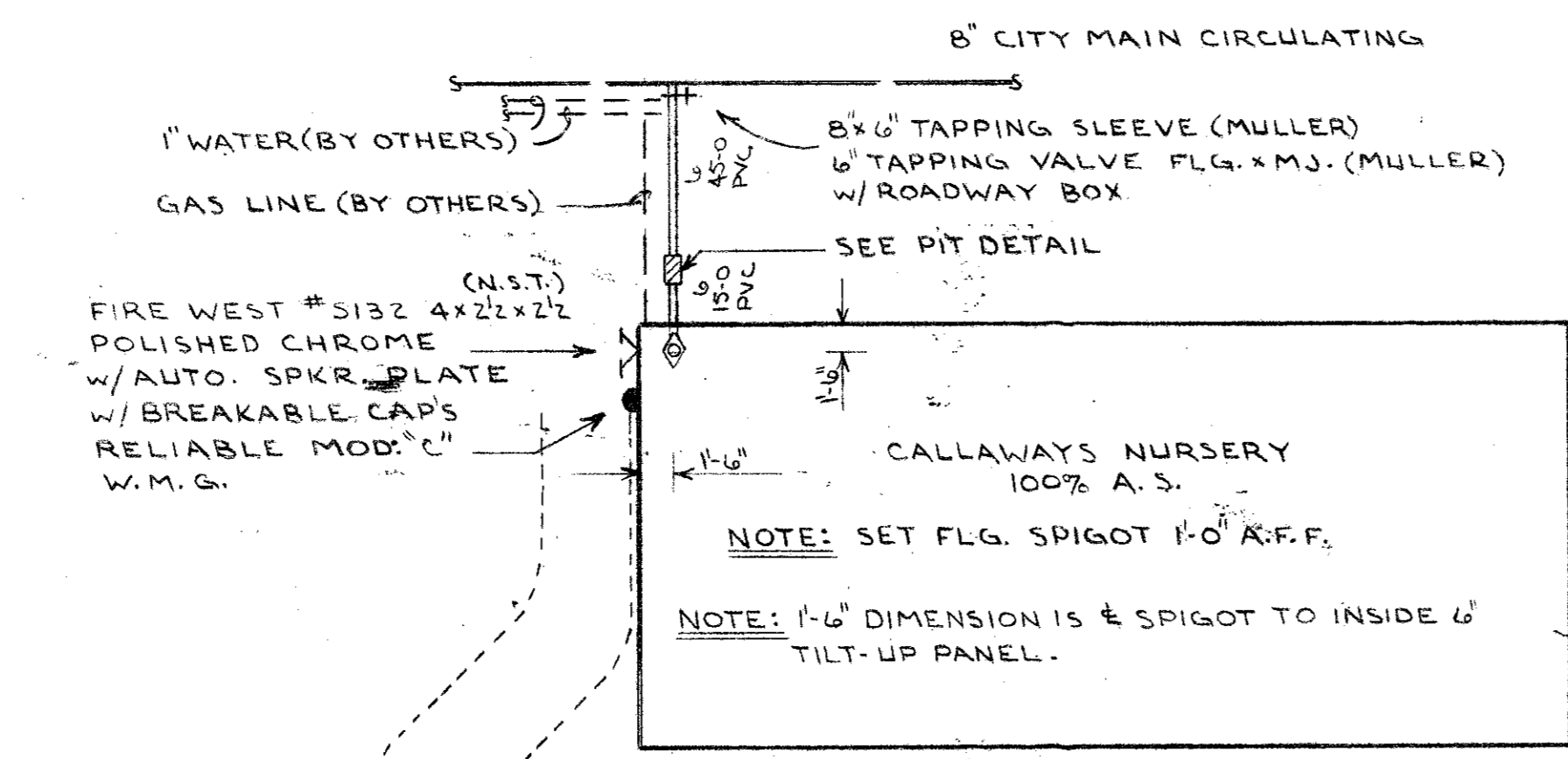
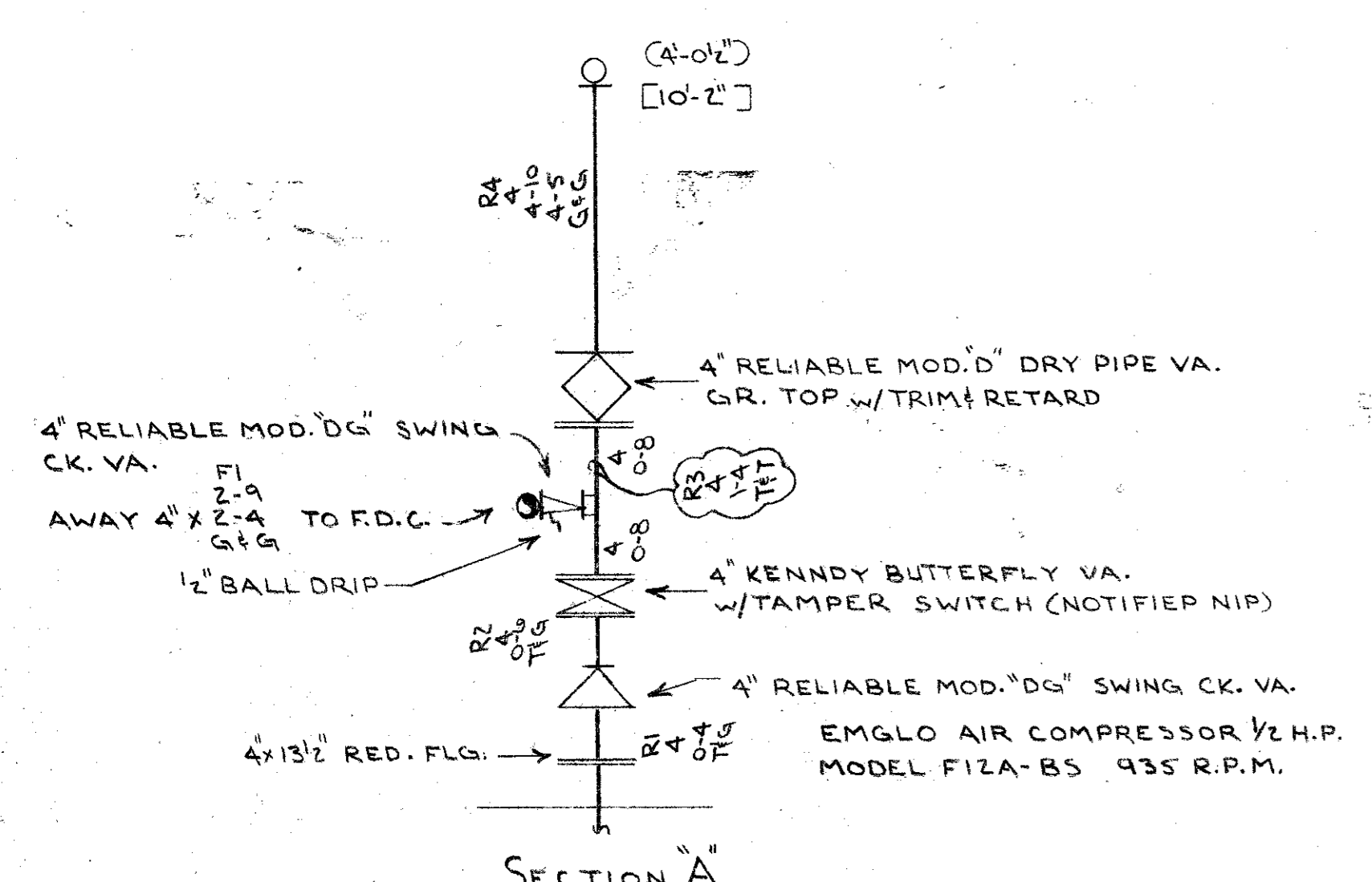


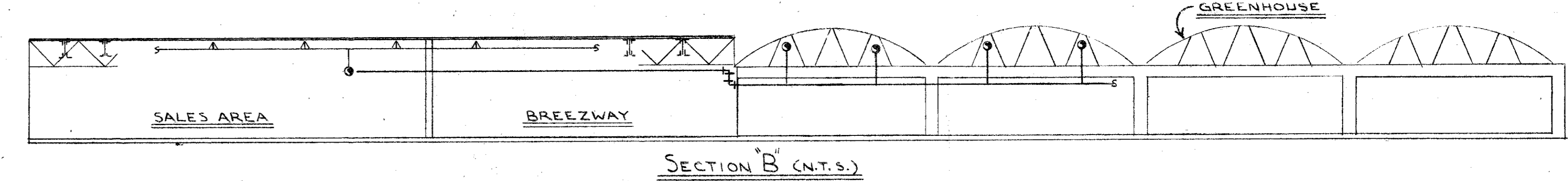
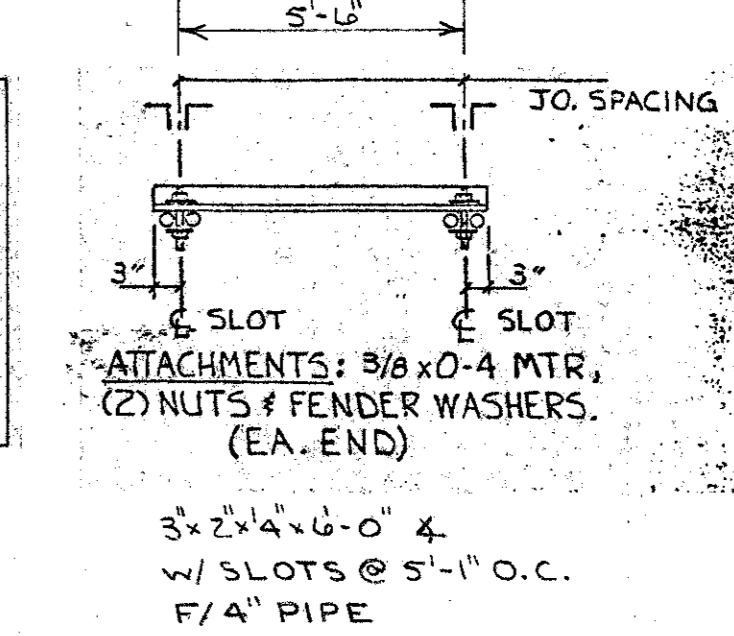
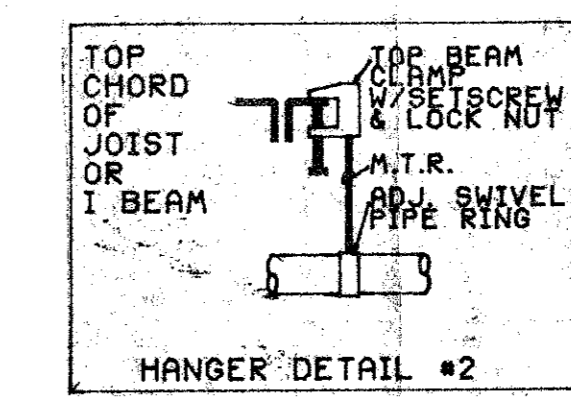
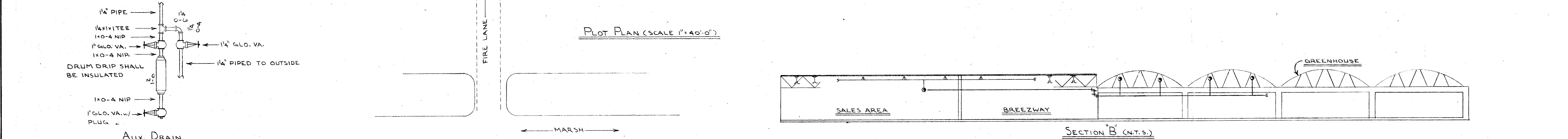
- PIPPING NOTE:**
- All piping to be in accordance with N.F.P.A. No. 13 (Latest Edition).
  - Unless otherwise noted, all piping is to be Sch. 40, Blk. Steel for sizes 1" through 6" (Sch. 30 for 8") Threaded or Grooved.
  - Refer to symbol legend for fitting types.
  - Piping designated on plan as "G & G" is to be lightweight Blk. Steel. Joints to be by roll grooves compatible with fittings used. As allowed by N.F.P.A. No. 13, lightweight piping conforms to the following:

Pipe Size	I.D.	Wall Thickness	Pipe Size	I.D.	Wall Thickness
1"	1.097	.109	3 1/2"	3.760	.120
1 1/4"	1.442	.109	4"	4.260	.120
1 1/2"	1.682	.109	5"	5.295	.134
2"	2.157	.109	6"	6.357	.134
2 1/2"	2.635	.120	8"	8.249	.168
3"	3.260	.120	10"	10.274	.188



**Flow Info:**  
 STATIC 88 P.S.I.  
 RESIDUAL 60 P.S.I.  
 FLOW 2648 G.P.M.  
 PITOT 38 P.S.I. (1) 4" OUTLET  
 DATE AUG. 1986  
 BY CITY OF ADDISON F.D.

**PLOT PLAN (SCALE 1"=40'-0")**

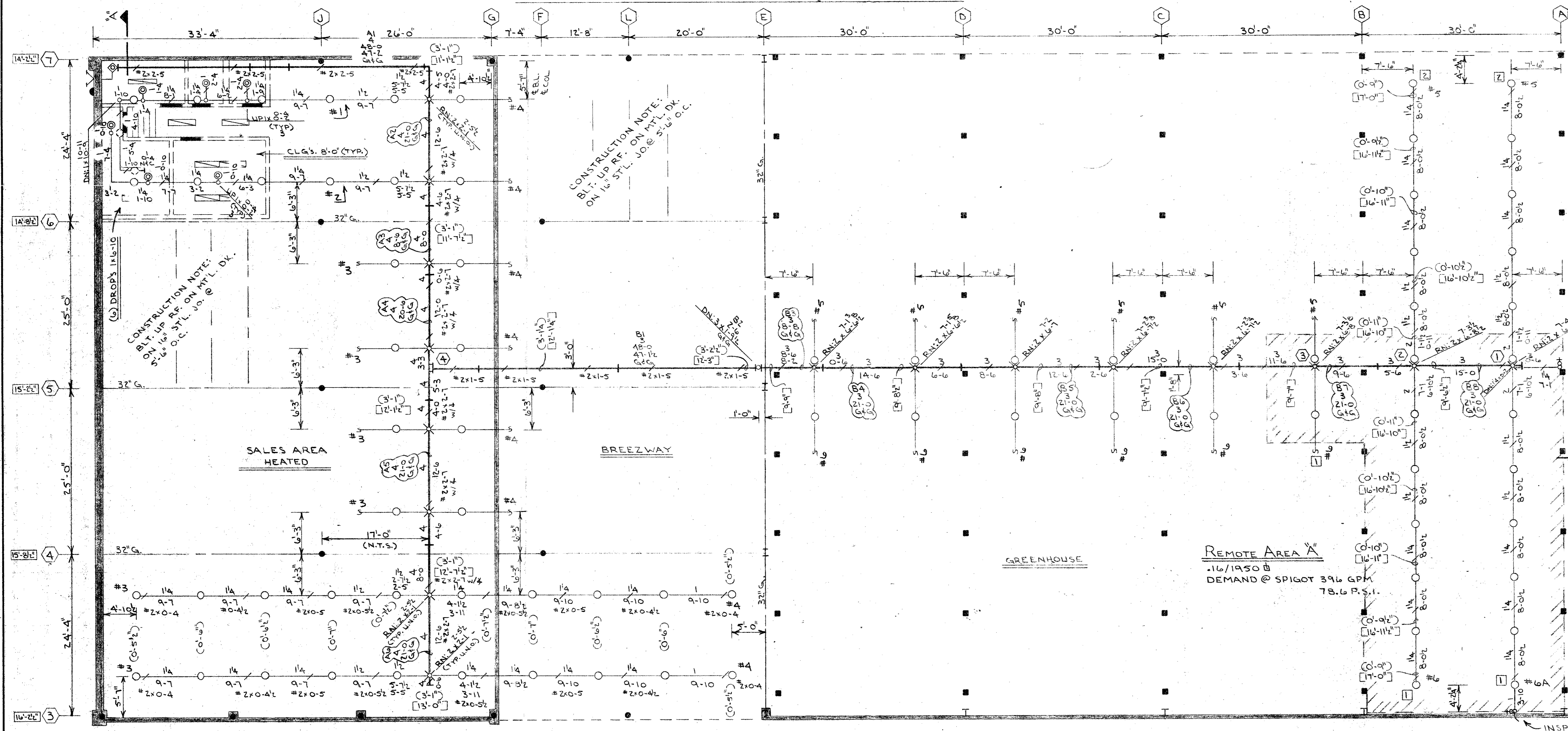


**GENERAL NOTES:**

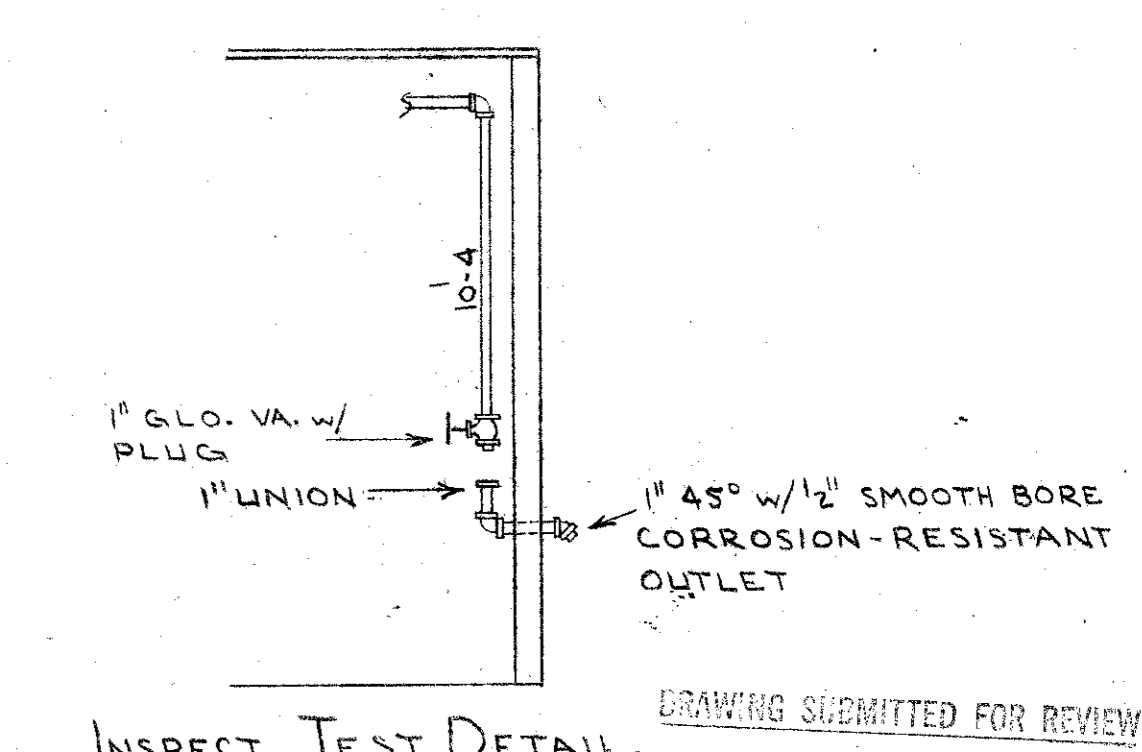
- THE DESIGN CRITERIA OF THE SYSTEM IS ON THE BASIS OF 130 SQ. FT. MAX. HEAD SPACING AND IS HYDRAULICALLY CALCULATED AT A DENSITY OF .10 OVER THE MOST DEMANDING 14950 SQ. FT. AREA FOR ORDINARY HAZARD OCCUPANCY AS DEFINED IN N.F.P.A. #13.
- LADW'S CONTRACT IS TO START AT CITY MAIN.
- LADW'S CONTRACT IS WITH SPRING VALLEY CONSTRUCTION CO. 16475 DALLS PKWY. DALLAS, TX. 75248.

**EXCLUSIONS**

- ELECTRICAL WIRING, CONDUIT AND/OR ELECTRICAL.
- ANY PAINTING.
- INSIDE HOSE STATIONS.
- FIRE EXTINGUISHERS.
- ROCK EXCAVATION.



**NOTE: SYSTEM CAPACITY 200 GAL.**



**DRAWING SUBMITTED FOR REVIEW**  
 I hereby certify that this sprinkler system design has been detailed in accordance with appropriate local ordinances, building codes, other attachments, contractual agreements and/or standards adopted by the Texas State Fire Marshal Agency Article 5.43-3.  
 1st Day in Dallas Date: March 25, 1987  
 CRAIG A. ANDRUS RME Lic. # SSL-0178

PLAN VIEW SYMBOLS		BUILDING & SYSTEM LEGEND		125# BLK. C.I. FLANGED FITTINGS		125# BLK. C.I. SCREW FITTINGS		GROOVED FITTINGS		U.L. APPROVED WELDED OUTLETS		SPRINKLER DESCRIPTION		REVISION DESCRIPTION		
WET MAIN RISER	STD. F.D.C. 2 1/2" x 1 1/4"	HYDRAULIC LINE NO.	(---) L PIPE BELOW TOP FLOOR	FLANGED UNION	FLANGED REDUCER	90° ELL	45° ELL	TEE	REDUCER	COUPLER	YAPER REDUCER	90° ELL	45° ELL	TEE	NO. DATE	REVISION DESCRIPTION
DRY MAIN RISER	FLUSH F.D.C. 2 1/2" x 1 1/4"	HYDRAULIC REF. POINT	(---) L PIPE ABOVE FLOOR	FLANGED UNION	FLANGED REDUCER	90° ELL	45° ELL	TEE	REDUCER	COUPLER	YAPER REDUCER	90° ELL	45° ELL	TEE	1 3/4 1/8	REL. MOD. "G" CHRM. RECESSED
DELUGE RISER	SINGLE F.D.C. 2 1/2" x 1 1/4"	FABRICATION LINE NO.	ROOF ELEVATION	FLANGED UNION	FLANGED REDUCER	90° ELL	45° ELL	TEE	REDUCER	COUPLER	YAPER REDUCER	90° ELL	45° ELL	TEE	3/4 1/8	REL. MOD. "G" BRZ. SSU
WATER MOTOR & GONG	FIRE HOSE RACK	FABRICATION MAIN NO.	CEILING ELEVATION	FLANGED UNION	FLANGED REDUCER	90° ELL	45° ELL	TEE	REDUCER	COUPLER	YAPER REDUCER	90° ELL	45° ELL	TEE	3/4 1/8	CITY PIT TO ACCOMMODATE DOMESTIC AND IRRIGATION METERS
ELECTRIC BELL	FIRE HOSE CABINET	WALL TO ROOF DECK	CEILING HIGH WALL	FLANGED UNION	FLANGED REDUCER	90° ELL	45° ELL	TEE	REDUCER	COUPLER	YAPER REDUCER	90° ELL	45° ELL	TEE	3/4 1/8	

Automatic Fire Sprinkler System For

**Callaway's Nursery**  
 14120 Marsh Ln.  
 Addison, Texas

DESIGNED BY WINNETT  
 DRAWN BY WINNETT  
 CHECKED BY MP  
 CONTRACT NO. 01-3079  
 DATE 3-5-87

**LADW FIRE PROTECTION**  
 4120 SCOTTSDALE DR.  
 DALLAS, TEXAS 75227  
 (214) 388-2171

TEXAS STATE FIRE MARSHAL CERTIFICATE OF REGISTRATION NO. SCR-0004  
 AUTHORITY HAVING JURISDICTION: S.B. & CITY  
 SCALE: 1/8"=1'-0"  
 SHEET NO: 1 OF 1