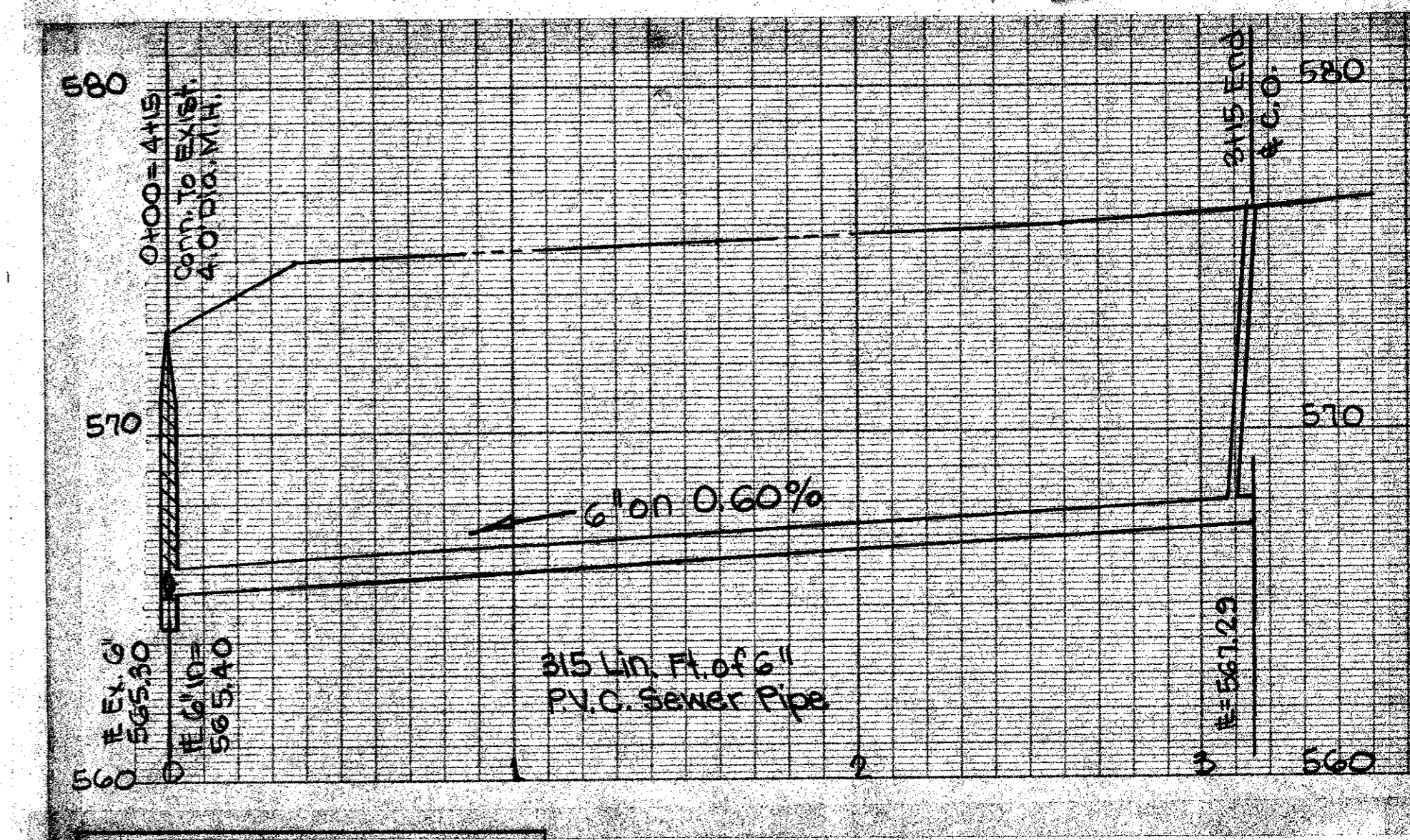
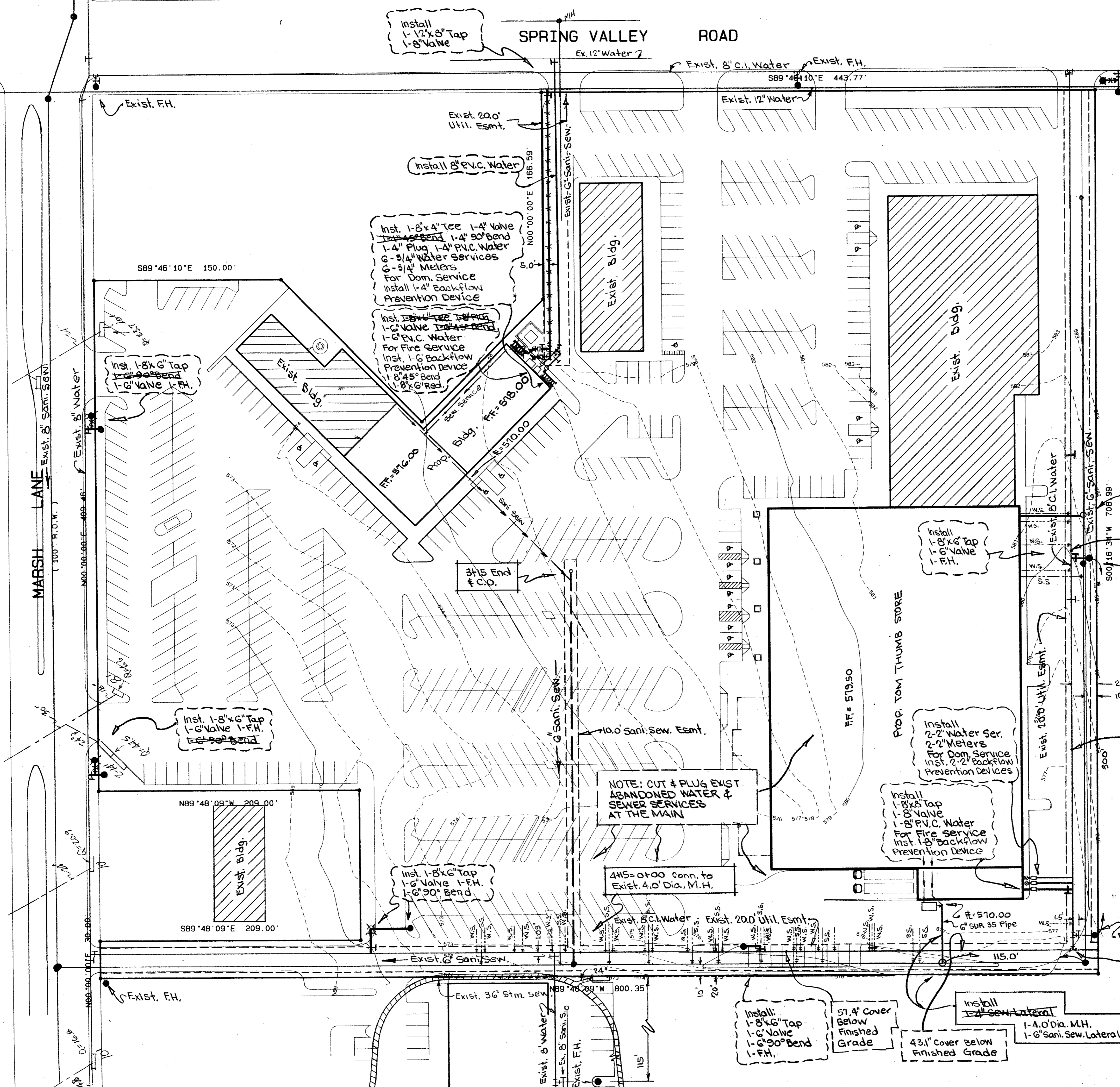


SEP 22 1993
 11:00 AM
 11:00 AM



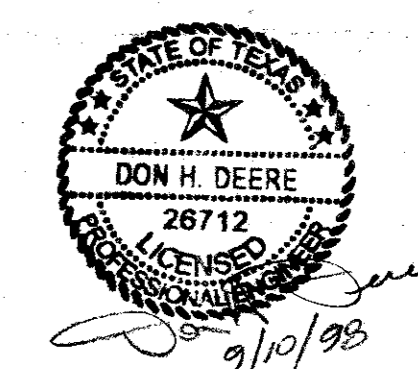
Installed 1-4.0' Dia. M.H.
 1-6" Sani. Sew. Lateral
 40.1' of Cover Below
 Finished Grade
 Cut off Cone of Exist. M.H.
 Lowered 2 Feet Then
 Poured Back Cone

F.H. - 6
 6" VAL - 6
 6" WAT - 125
 8" VAL
 8" WAT
 445-0100
 6" S.S. 315'

NOTE: CUT & PLUG EXIST
 ABANDONED WATER &
 SEWER SERVICES
 AT THE MAIN

Install
 1-8"x6" Tap
 1-6" Valve
 1-6" P.V.C. Water
 For Fire Service
 Install 1-6" Backflow
 Prevention Device

43.3' Cover Below
 Finished Grade



WATER AND SANITARY SEWER MAINS
BROOKHAVEN VILLAGE SHOPPING CENTER

NOAH GOOD SURVEY, ABSTRACT NO. 520
 DALLAS COUNTY, TEXAS
 ADDISON, TEXAS
 FERGUSON-DEERE, INC. * ENGINEERS
 9817 KINGSLEY ROAD - DALLAS, TEXAS 75238
 JUNE, 1998 - SCALE: 1" = 40'

REV. 10/6/98