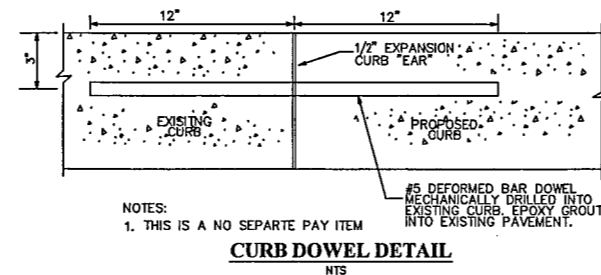
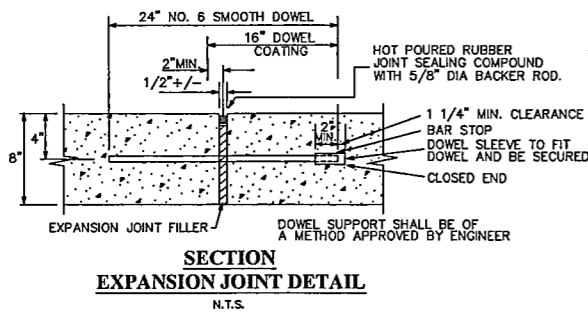
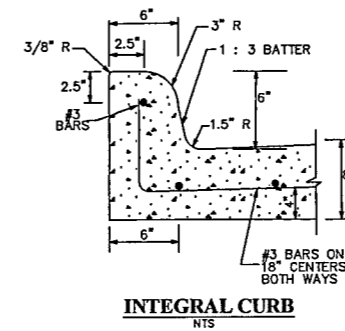
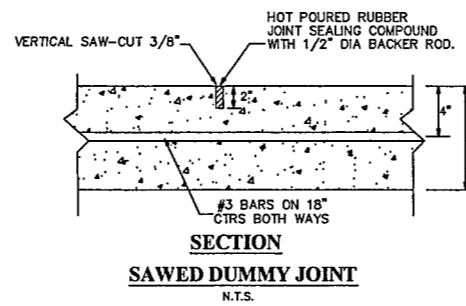
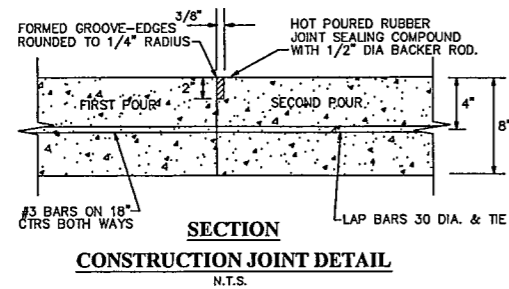


- NOTES:
1. NO. 5 DEFORMED DOWEL BAR MAY BE USED IN 6 INCH PAVEMENT THICKNESS.
 2. DOWEL BARS SHALL BE DRILLED INTO PAVEMENT HORIZONTALLY BY USE OF A MECHANICAL RIG. DRILLING BY HAND IS NOT ACCEPTABLE. PUSHING DOWEL BARS INTO GREEN CONCRETE IS NOT ACCEPTABLE.
 3. THIS IS A NO SEPARTE PAY ITEM
 4. EPOXY A103 OR APPROVED EQUAL. INSTALL FULL DEPTH PER MANUFACTURE'S INSTRUCTIONS.



Quinn D. Spann, Jr.

STATE OF TEXAS
QUINN D. SPANN, JR.
REGISTERED PROFESSIONAL ENGINEER
88108
8-5-08

REVISION NO.	DESCRIPTION	BY	DATE
	TOWN OF ADDISON, TEXAS PUBLIC WORKS DEPT. - ENGINEERING DIVISION		
	GREENHAVEN WATERLINE RECONSTRUCTION		
	MISCELLANEOUS DETAILS		
DESIGN:	GSWW	SCALE:	AS NOTED
DRAWN:	GSWW		SHEET
APPROVED:	QGS		3 OF 5
DATE:	AUGUST 2008		