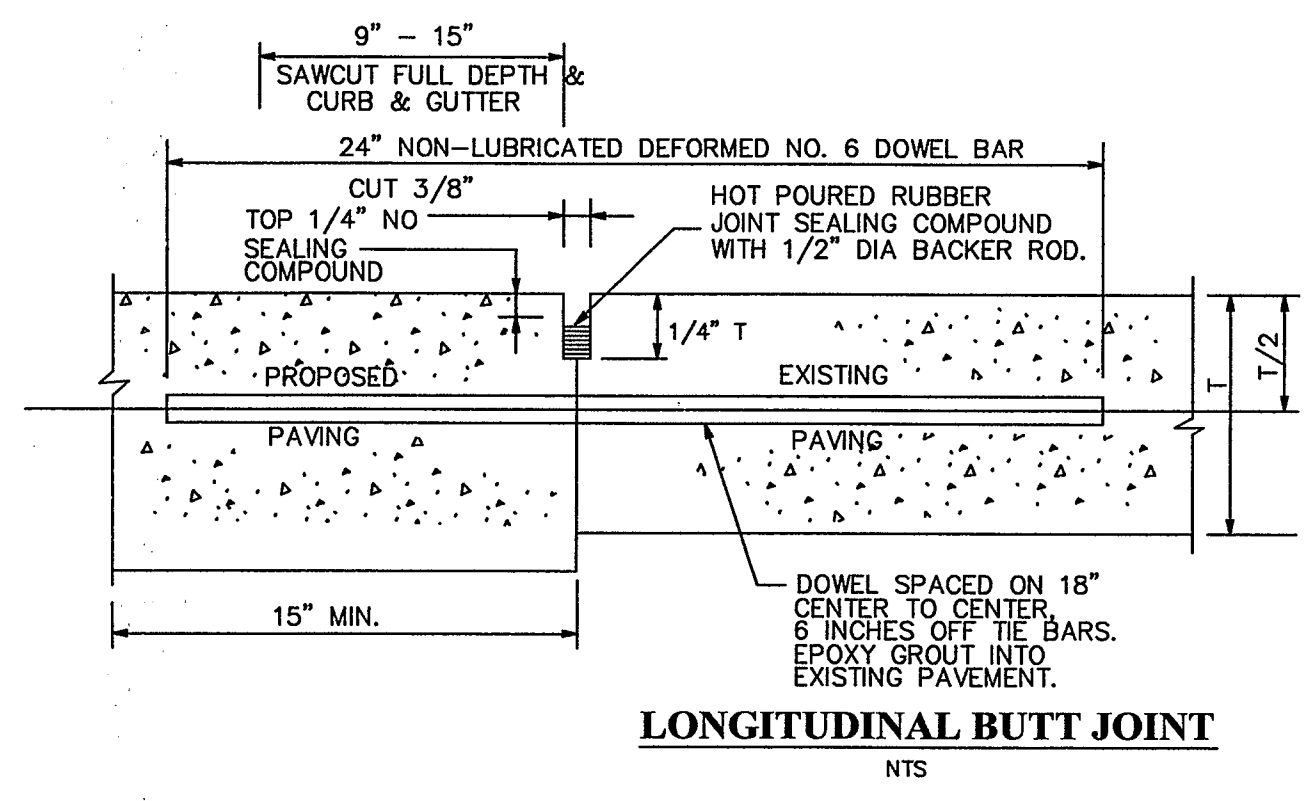
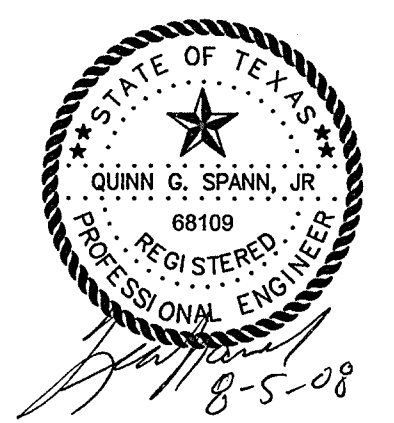
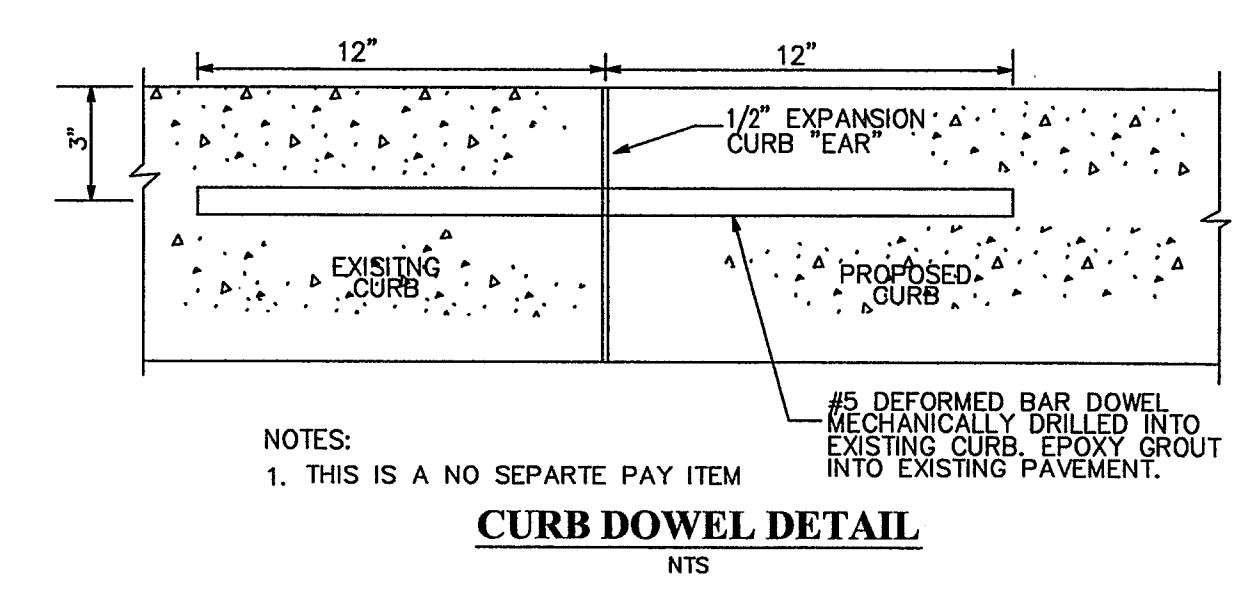
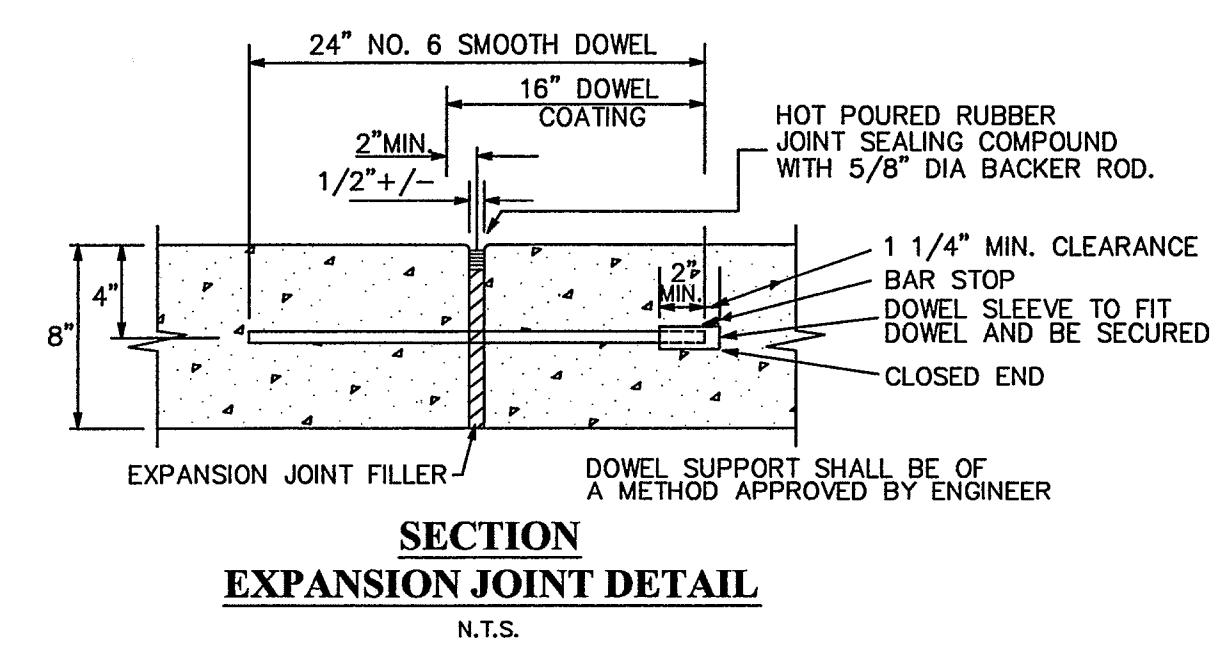
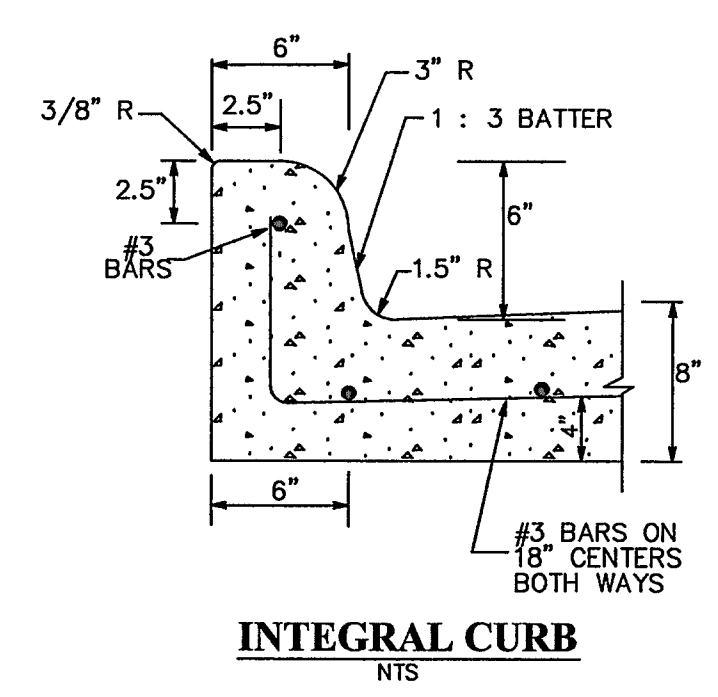
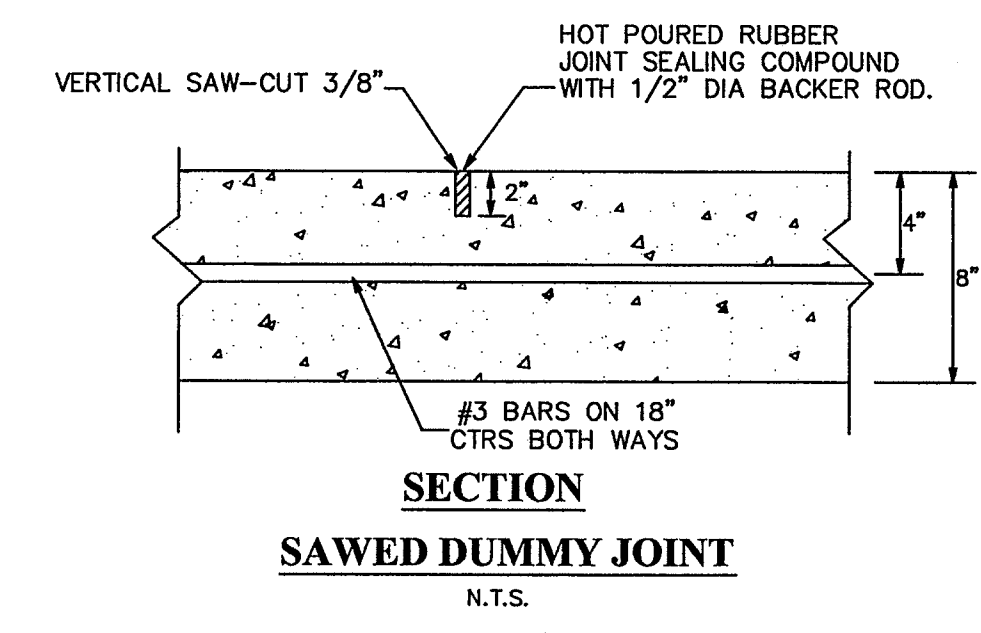
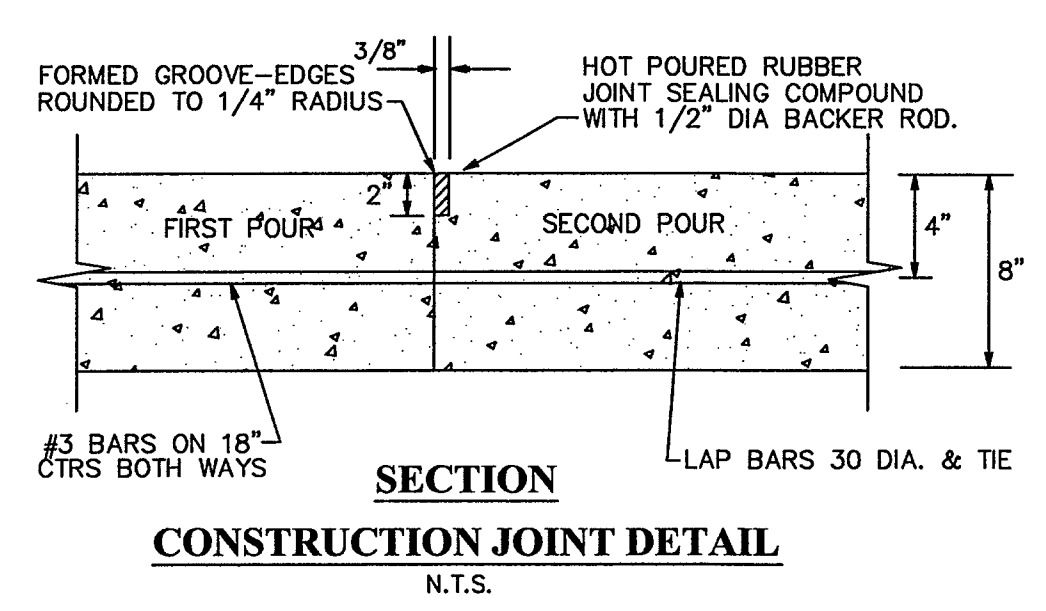


CURB INLET PROTECTION
NTS



- NOTES:
- NO. 5 DEFORMED DOWEL BAR MAY BE USED IN 6 INCH PAVEMENT THICKNESS.
 - DOWEL BARS SHALL BE DRILLED INTO PAVEMENT HORIZONTALLY BY USE OF A MECHANICAL RIG. DRILLING BY HAND IS NOT ACCEPTABLE. PUSHING DOWEL BARS INTO GREEN CONCRETE IS NOT ACCEPTABLE.
 - THIS IS A NO SEPARATE PAY ITEM
 - EPOXY A103 OR APPROVED EQUAL. INSTALL FULL DEPTH PER MANUFACTURE'S INSTRUCTIONS.



REVISION NO.	DESCRIPTION	BY	DATE
TOWN OF ADDISON, TEXAS PUBLIC WORKS DEPT. - ENGINEERING DIVISION			
GREENHAVEN WATERLINE RECONSTRUCTION			
MISCELLANEOUS DETAILS			
GSWW, Inc. DALLAS, TX • FORT WORTH, TX • HOUSTON, TX • AUSTIN, TX DREXEL CO. 817/354-1144 202/885-8888 817/762-0662 Dallas - Fort Worth - Midland - Austin			
DESIGN:	GSWW	SCALE:	AS NOTED
DRAWN:	GSWW	<i>Addison!</i> SHEET	
APPROVED:	QGS		
DATE:	AUGUST 2008	3 OF 5	