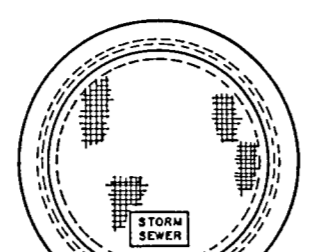
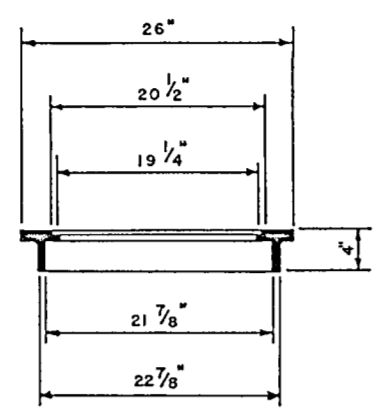


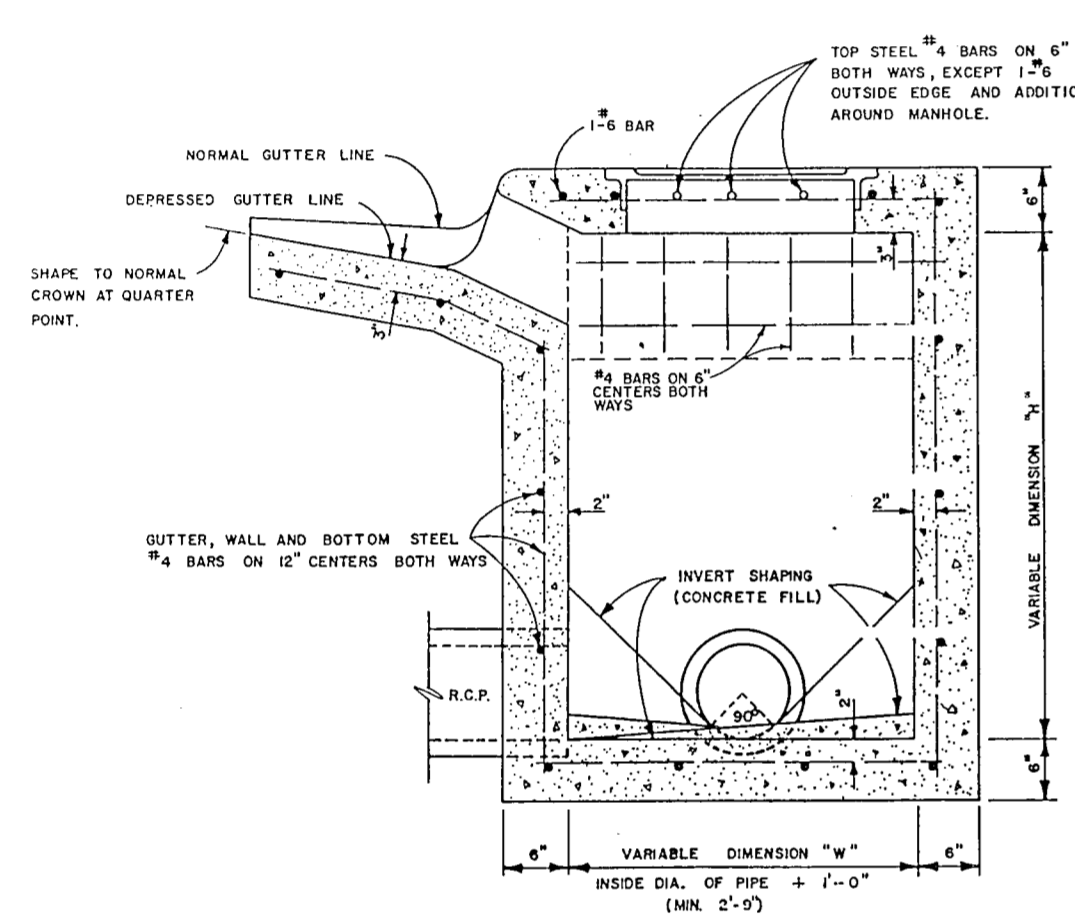
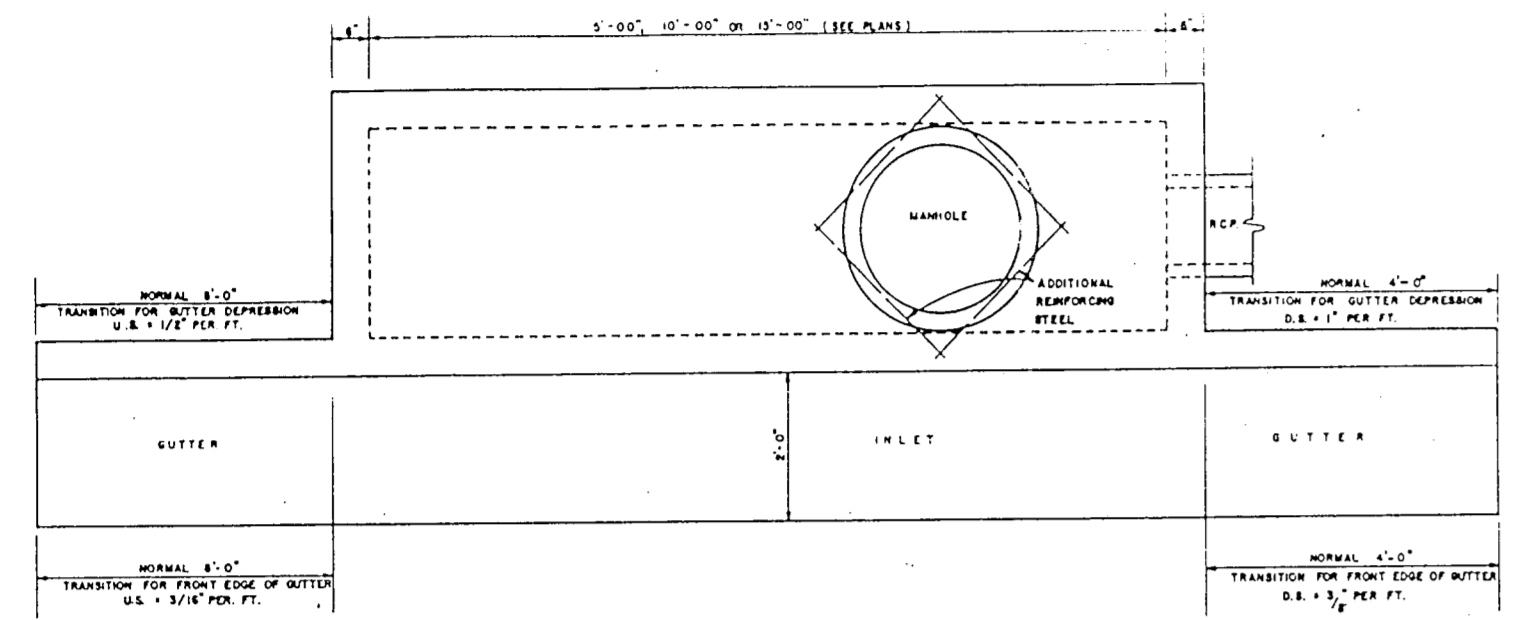
ELEVATION



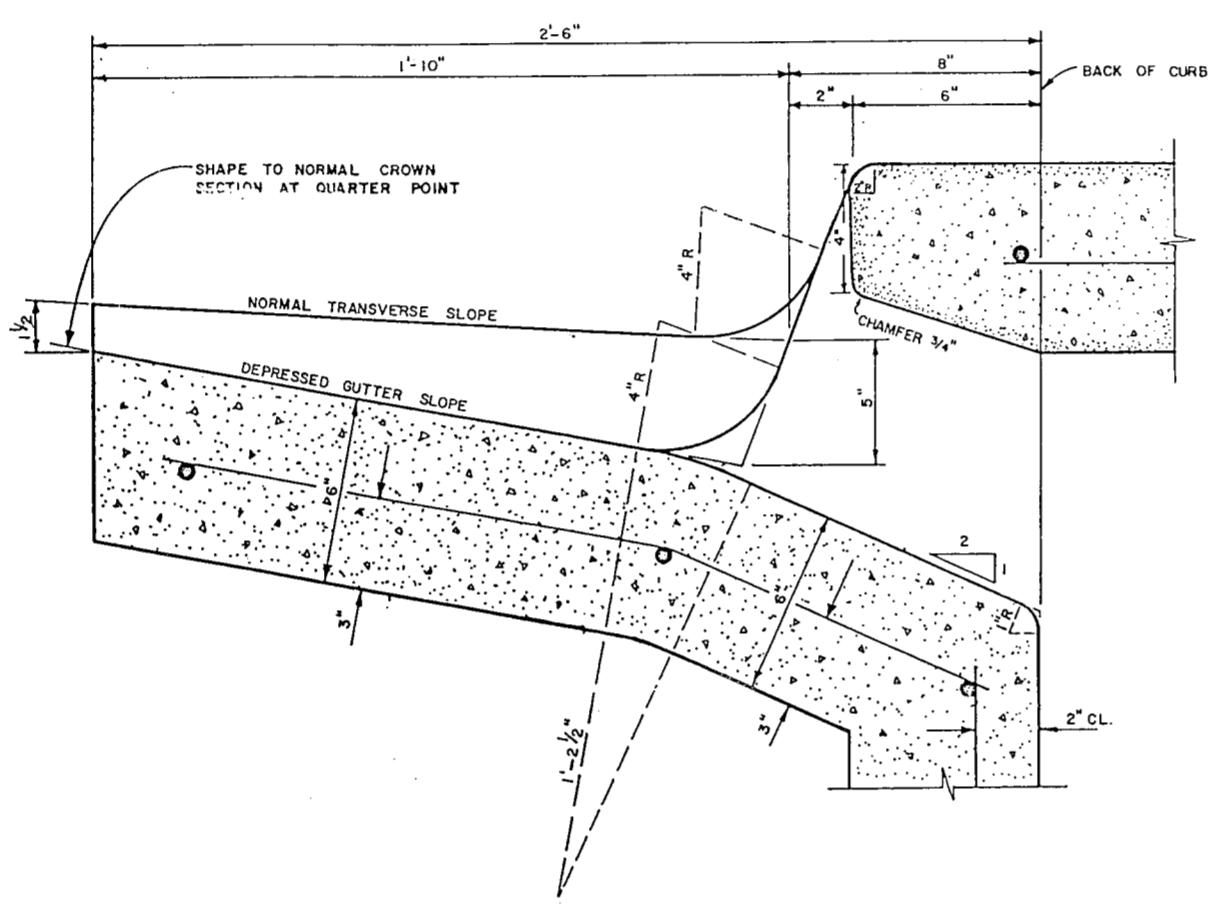
NOTE:
LID TO BE FURNISHED WITH A CHAIN RETENTION DEVICE



STORM SEWER LID



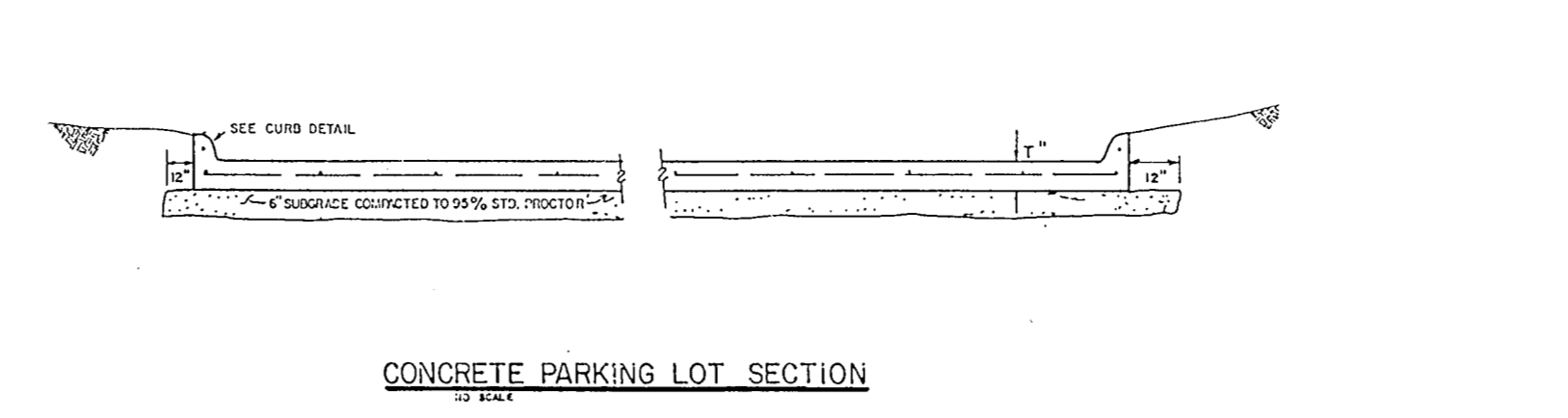
SECTION B-B



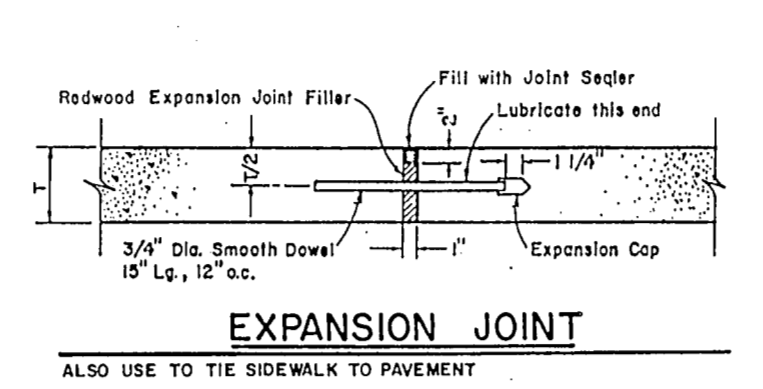
THROAT DETAIL

GENERAL NOTES:
 IN GENERAL, REINFORCING STEEL SHALL BE NO. 4 BARS, ON 12" CENTERS BOTH WAYS FOR GUTTER, BOTTOM SLAB, ENDS, AND FRONT & BACK WALLS, AND NO. 4 BARS ON 6" CENTERS BOTH WAYS FOR TOP SLAB. AN ADDITIONAL NO. 6 BAR SHALL BE PLACED IN THE FRONT EDGE OF THE TOP SLAB IN BOTH INLETS AND EXTENSIONS, AND ADDITIONAL REINFORCING STEEL SHALL BE PLACED AROUND MANHOLES AS SHOWN.
 ALL REINFORCING STEEL SHALL BE OPEN HEARTH NEW BILLET STEEL OF INTERMEDIATE OR HARD GRADE CONFORMING TO A.S.T.M. A-15. DEFORMATIONS SHALL CONFORM TO A.S.T.M. A-305-56.
 ALL CONCRETE SHALL BE CLASS "A" (5 BAGS OF CEMENT PER CY, AND A MINIMUM COMPRESSIVE STRENGTH AT 28 DAYS OF 3000 P.S.I.). ALL EXPOSED CORNERS SHALL BE CHAMFERED 3/4".
 ALL REINFORCING STEEL SHALL HAVE A MINIMUM COVER OF 2" TO THE CENTER OF THE BARS.
 ALL BACKFILLING SHALL BE PERFORMED BY MECHANICAL TAMPING.

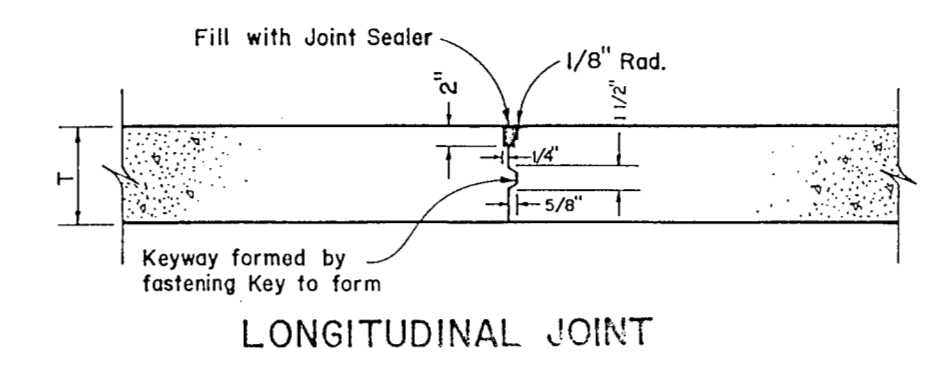
CURB INLET DETAILS



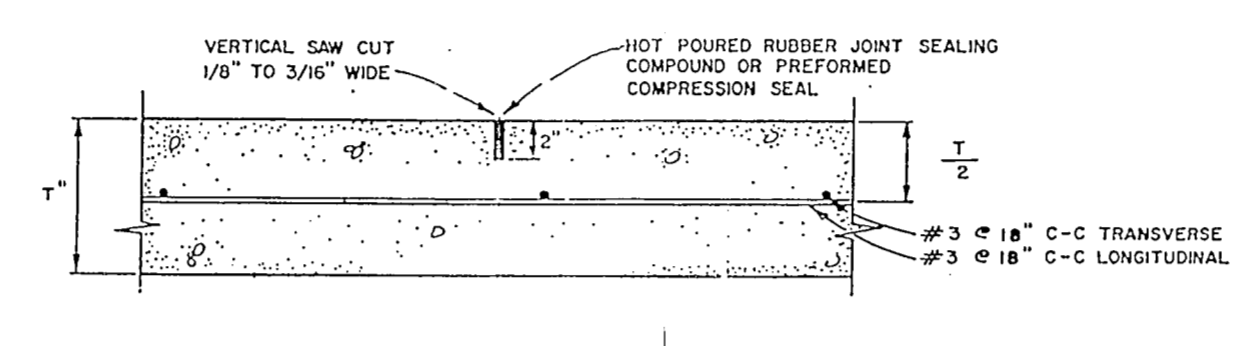
CONCRETE PARKING LOT SECTION



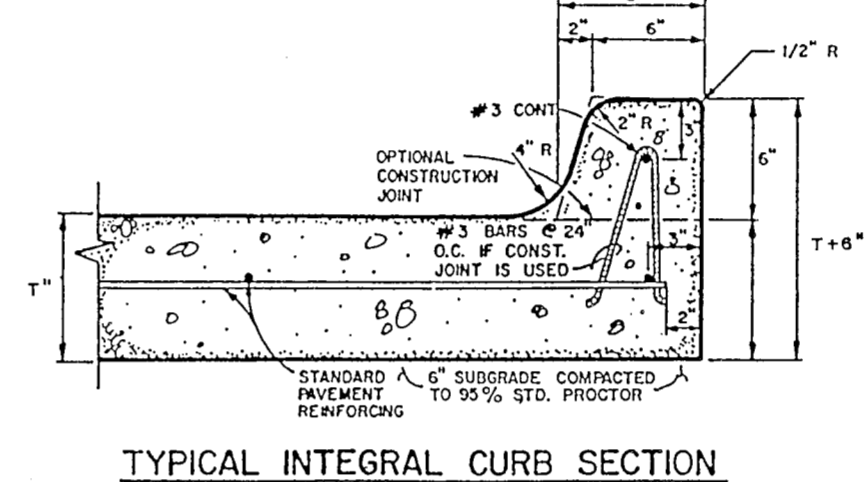
EXPANSION JOINT



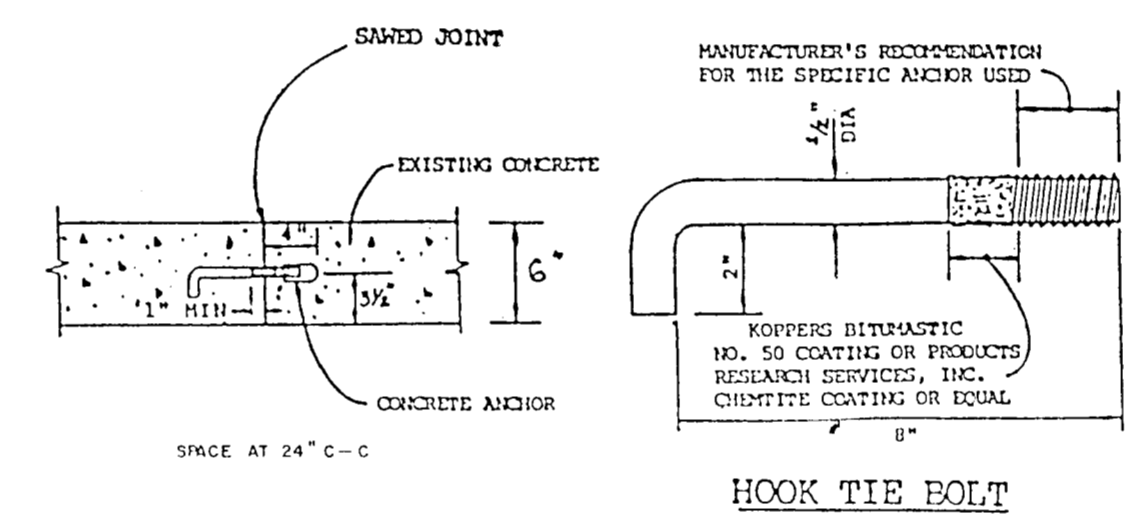
LONGITUDINAL JOINT



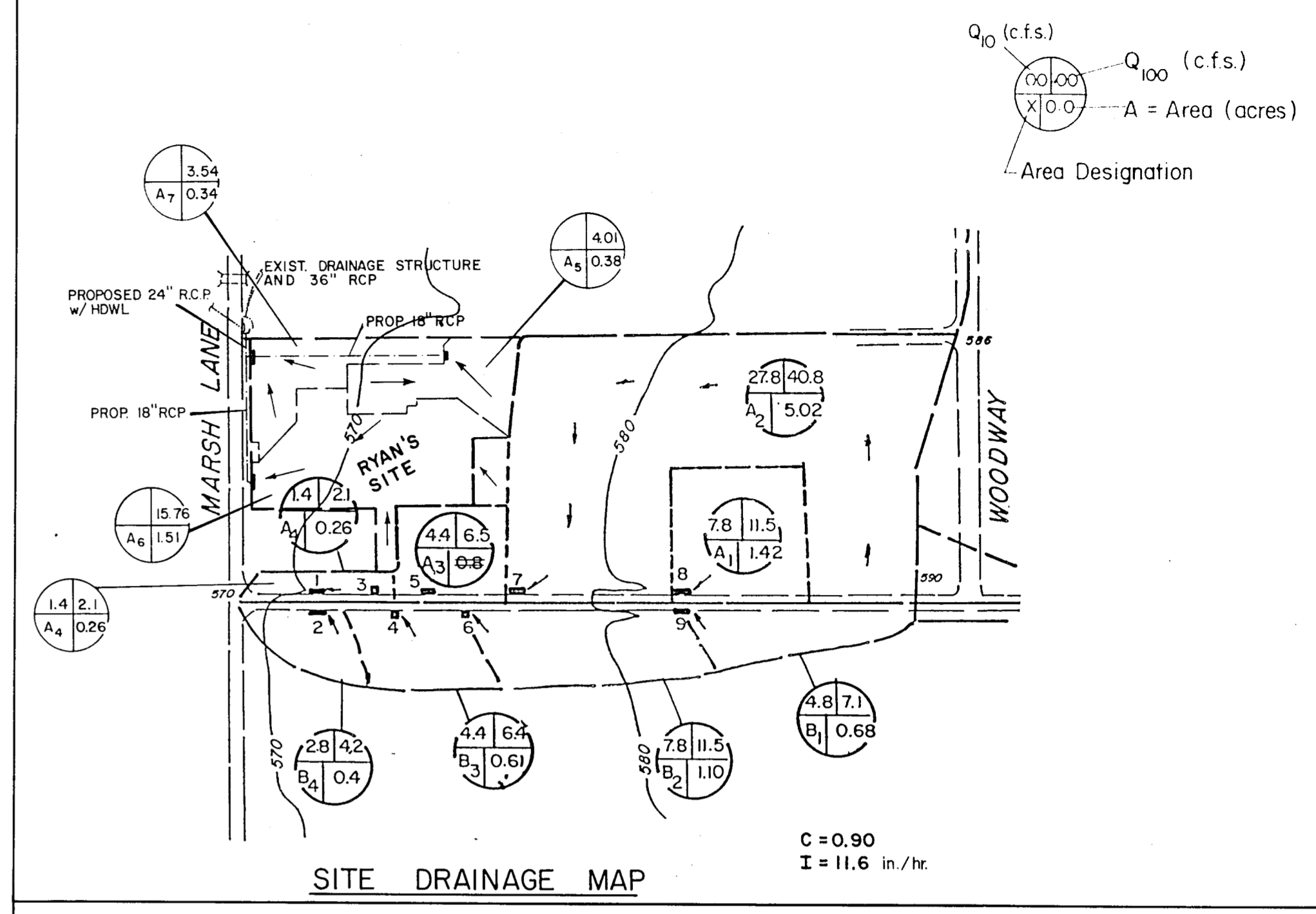
SAWED CONTRACTION JOINT



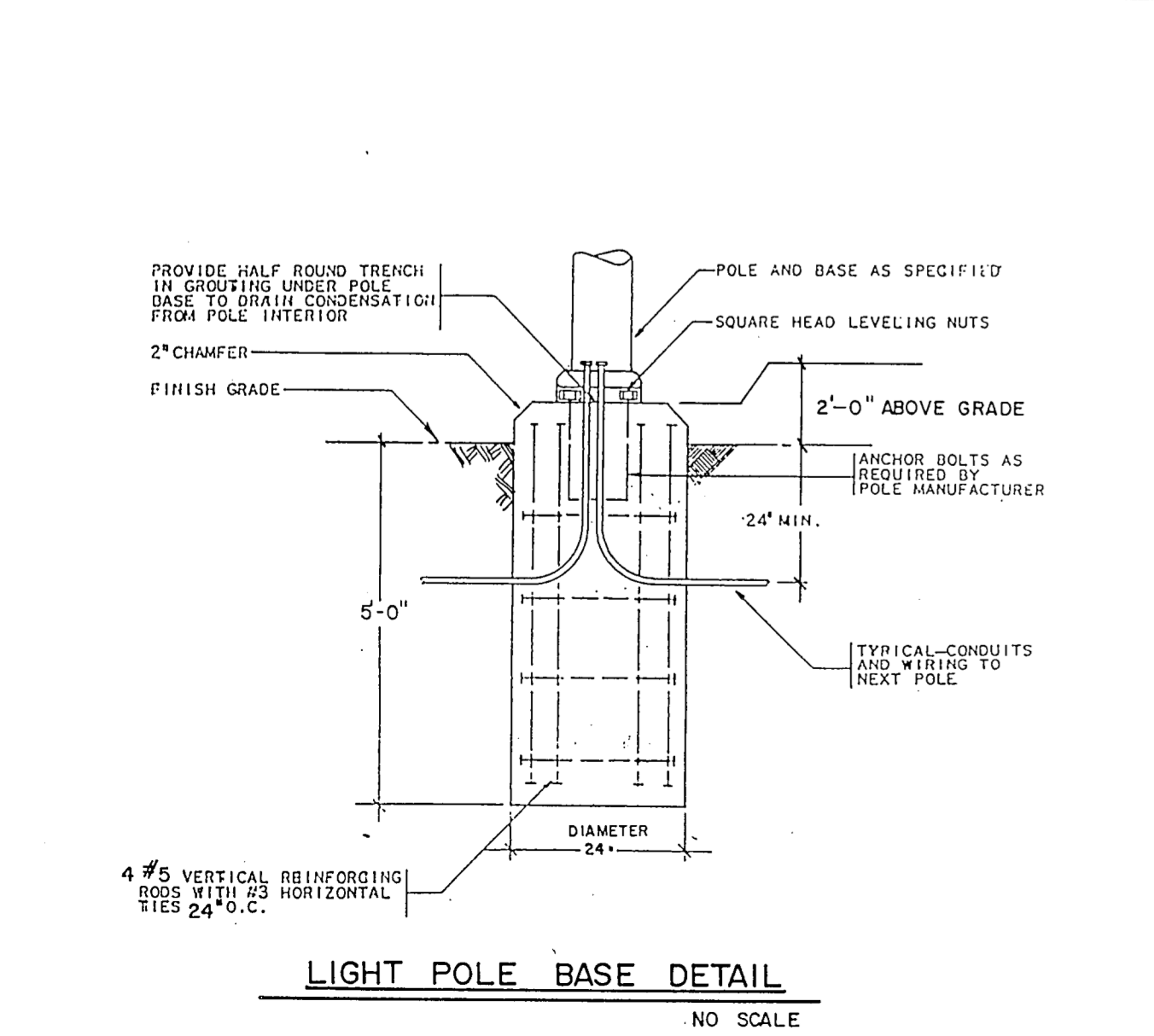
TYPICAL INTEGRAL CURB SECTION



LOAD TRANSFER FOR LONGITUDINAL JOINTS FOR CONNECTING TO EXISTING PAVEMENT

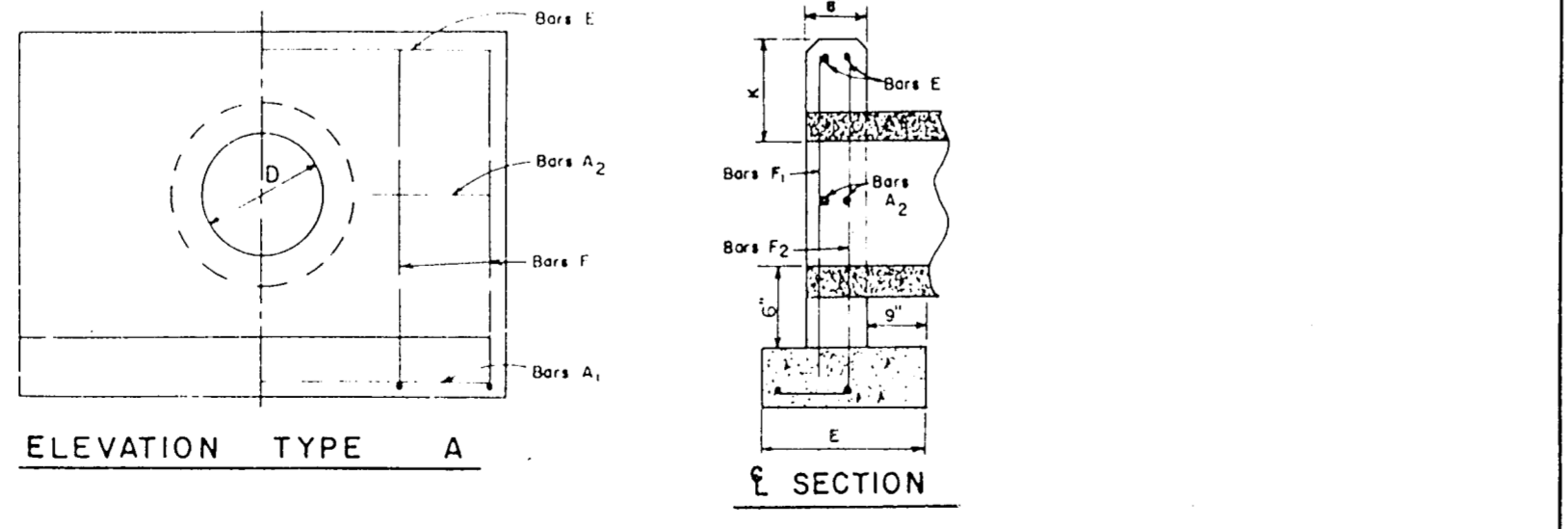


SITE DRAINAGE MAP



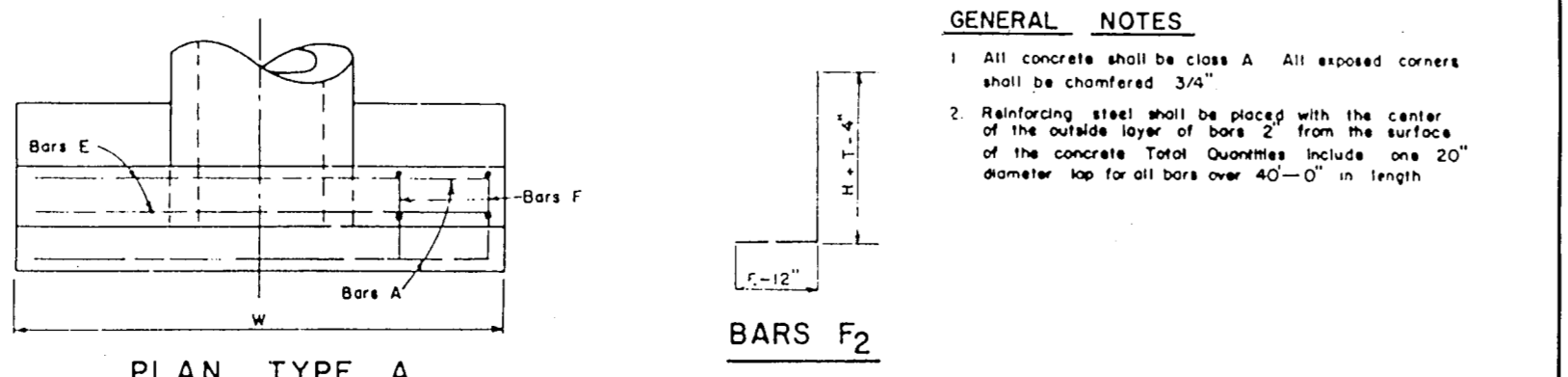
LIGHT POLE BASE DETAIL

NO.	DIM.	REINFORCING STEEL FOR TWO TYPE A HEADWALLS												TOTAL QUANTITIES															
		G	K	T	E	H	W	Lgth	Wt	N	Lgth	Wt	N	Lbs	Cy														
1	24"	12	9	2	0	3	6	12	0	11	8	11	8	14	11	8	49	24	1/2	3	1	63	24	1/2	4	1	79	223	3.17



ELEVATION TYPE A

SECTION

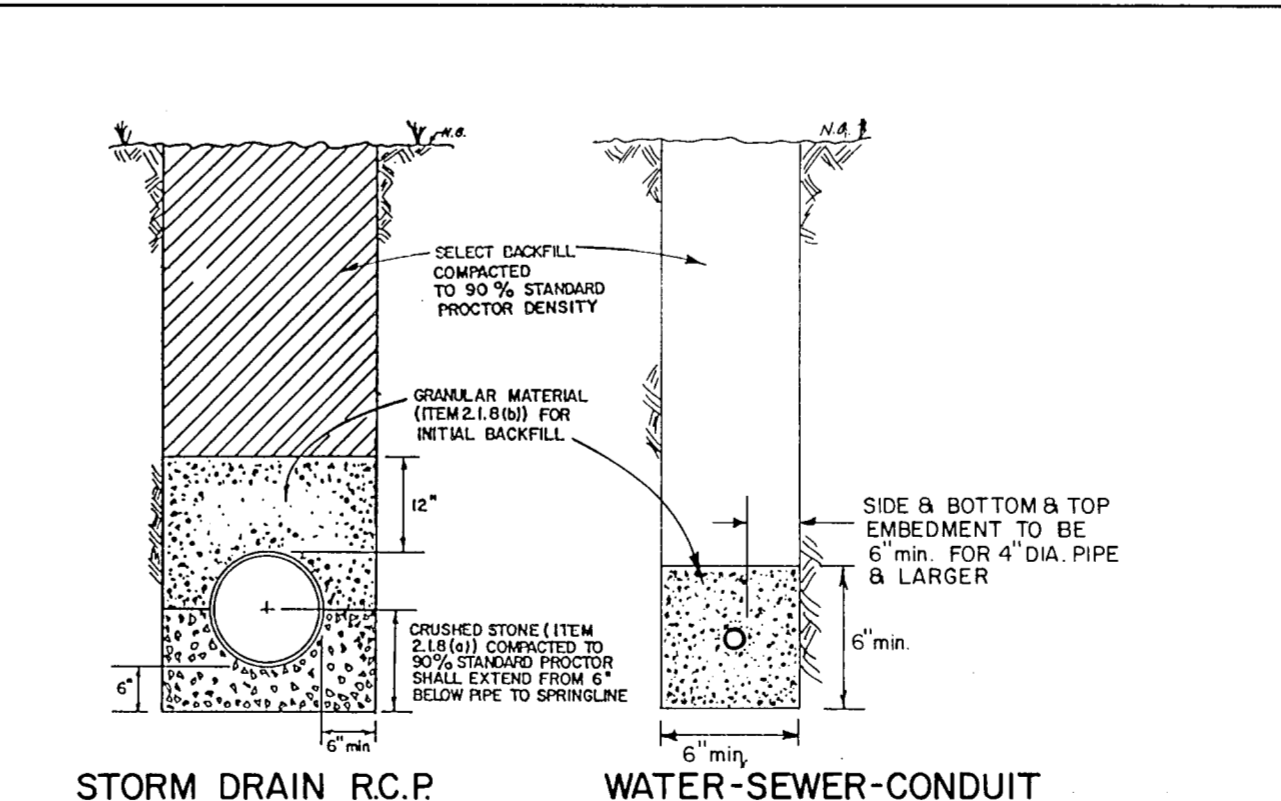


PLAN TYPE A

BARS F2

GENERAL NOTES:
 1. All concrete shall be class A. All exposed corners shall be chamfered 3/4".
 2. Reinforcing steel shall be placed with the center of the outside layer of bars 2" from the surface of the concrete. Total quantities include one 20" diameter top for all bars over 40'-0" in length.

TYPE A HEADWALL DETAIL



STORM DRAIN R.C.P. WATER-SEWER-CONDUIT

EMBEDMENT DETAILS

NOTES:
 1. REFER TO NOTES SPECIFICATIONS FOR REINFORCING STEEL.
 2. MARKER TAPE @ 6" ABOVE PIPE REQUIRED CONTINUOUS ALONG TRENCH WHEN NATIVE MATERIAL IS USED FOR BACKFILL.

PRELIMINARY
 JAN 17 1992
 REVIEW SET

NO.	DATE	REVISION
RYAN'S FAMILY STEAK HOUSE		
SITE DRAINAGE MAP DETAILS		
CHEATHAM & ASSOCIATES CONSULTING ENGINEERS — SURVEYORS — LAND PLANNERS		
DATE	SCALE	SHEET
JANUARY, 1992	AS NOTED	981-604
DESIGN	DRAWN	CHECK
GBJ	GBJ	ELC
		2 OF 2

