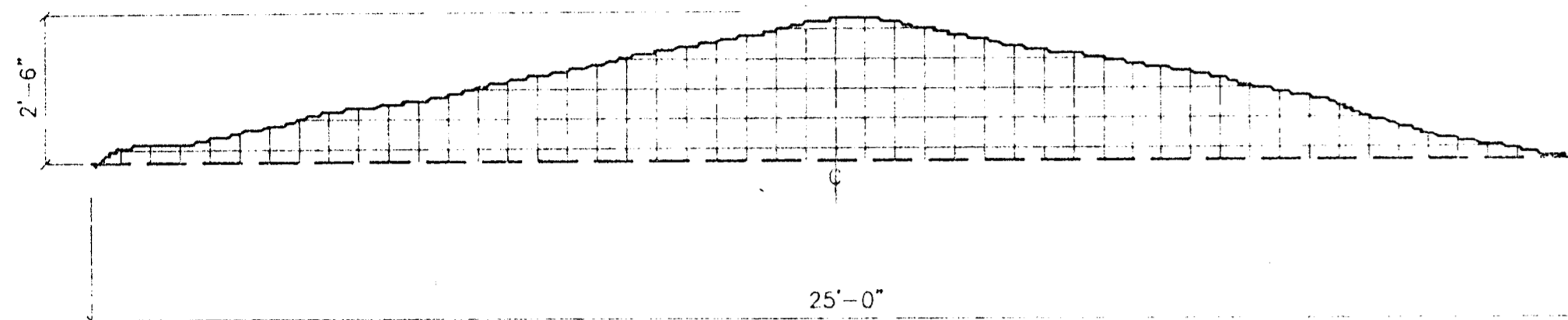


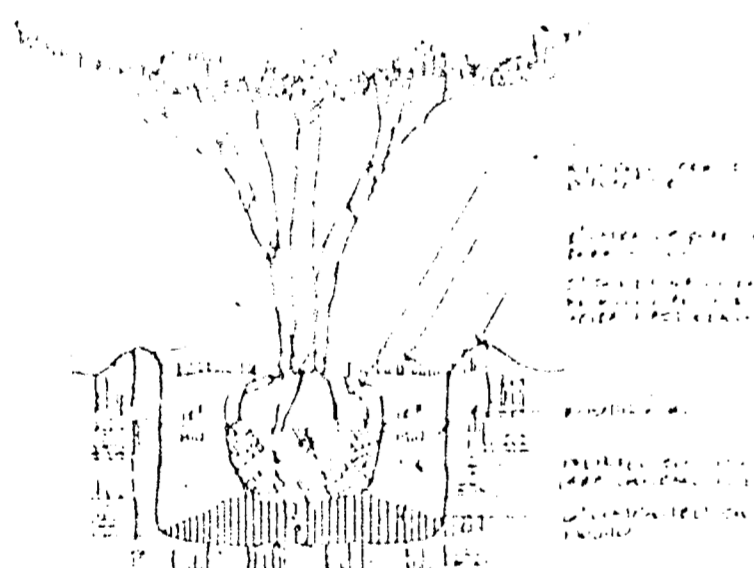
PLANTING SCHEDULE				
KEY	QTY.	DESCRIPTION	SIZE	REMARKS
1	113	ILEX BURFORD NANA - DWARF BURFORD	5 GAL.	3' O.C.
2	51	RAPHEOLEPIS INDICA - INDIAN HAWTH BALLERNA	5 GAL.	3' O.C.
3	63	RAPHEOLEPIS INDICA - INDIAN HAWTH GLARA	5 GAL.	3' O.C.
4	30	LIRIOPE MUSCARI - LILY TURF	1 GAL.	20" O.C.
5	14	LAGER STROEMIA INDICA - CRAPE MYRTLE	8"-0" HT.	
6	115	PHOTINA FARSEKI - RED TIP	5 GAL.	4' O.C.
7	10	QUERCUS VIRGINIANA - LIVE OAK	4" CAL.	



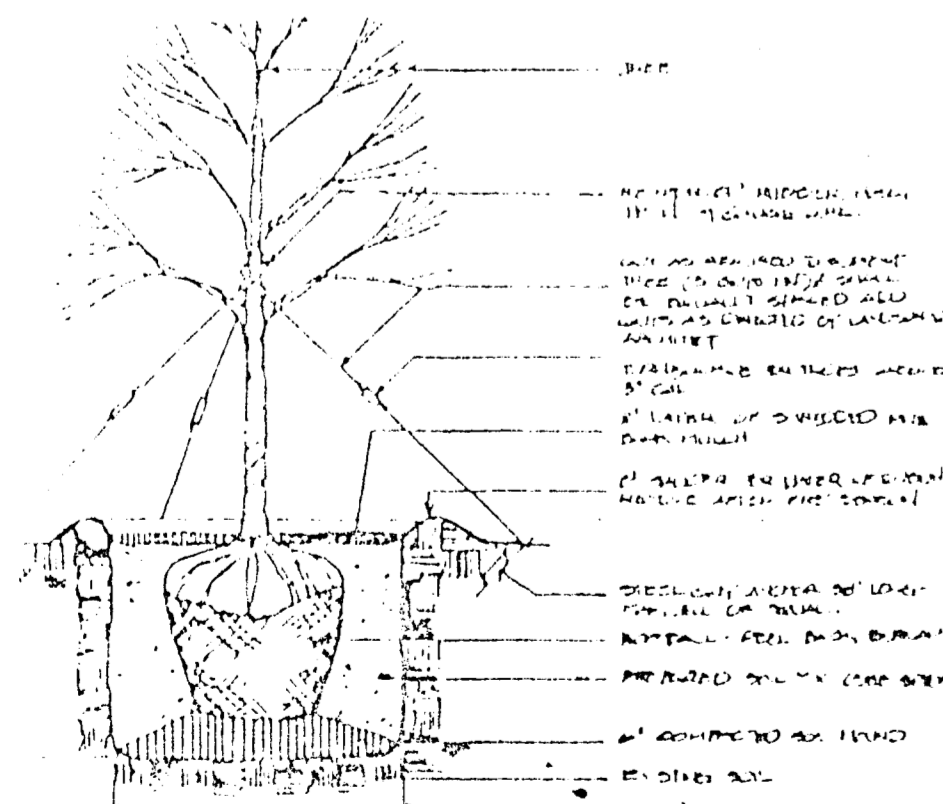
TYP. CUT OF BERM AT MARSH LANE



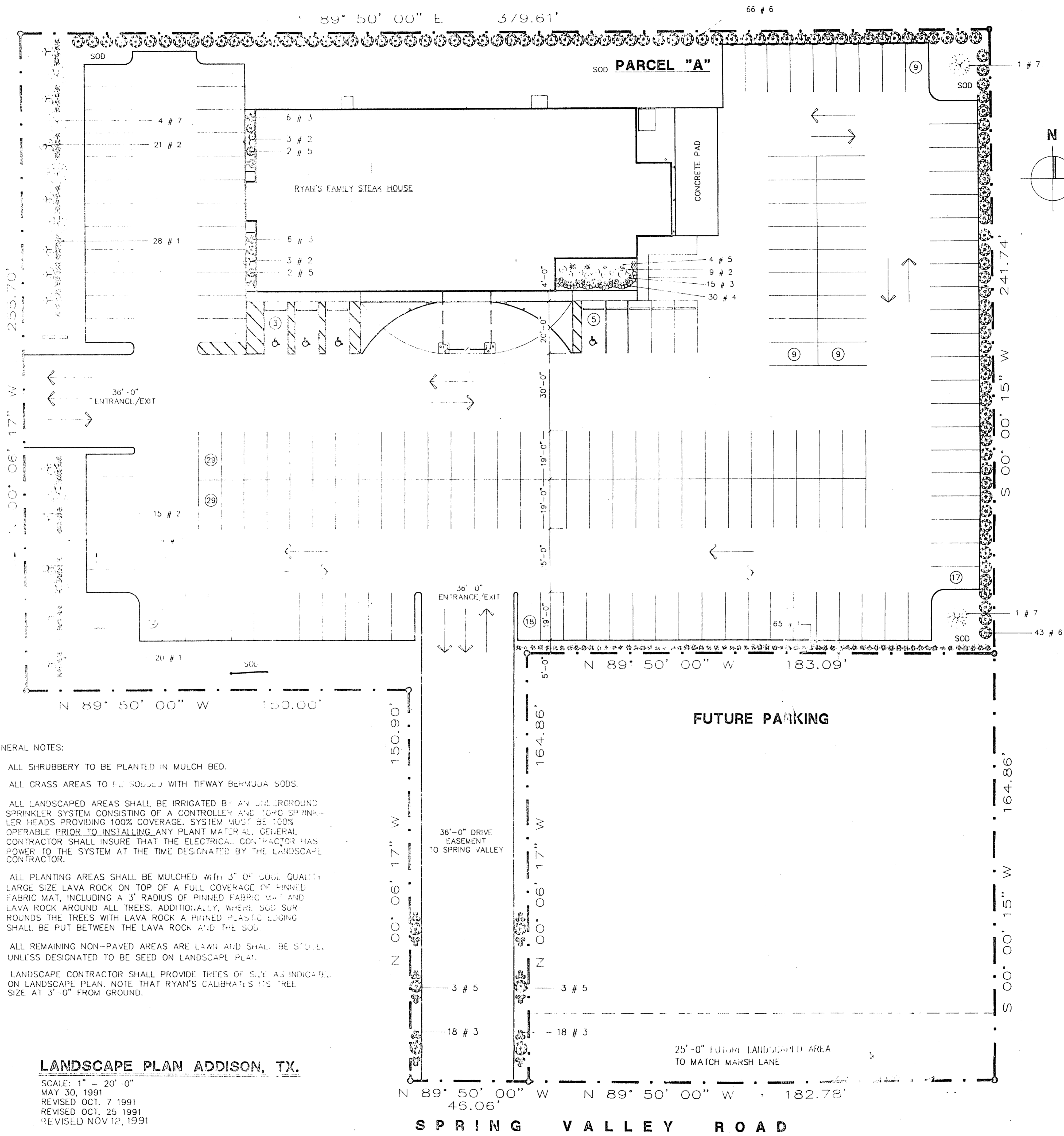
TYPICAL SHRUB PLANTING DETAIL



TYPICAL TREE PLANTING DETAIL



TYPICAL TREE PLANTING & GRADING DETAIL



MARSH LANE

36'-0" DRIVE EASEMENT TO SPRING VALLEY

**LANDSCAPE PLAN ADDISON, TX.**

SCALE: 1" = 20'-0"  
 MAY 30, 1991  
 REVISED OCT. 7, 1991  
 REVISED OCT. 25, 1991  
 REVISED NOV. 12, 1991

GENERAL NOTES:

1. ALL SHRUBBERY TO BE PLANTED IN MULCH BED.
2. ALL GRASS AREAS TO BE SOEDED WITH TIFWAY BERMUDA SODS.
3. ALL LANDSCAPED AREAS SHALL BE IRRIGATED BY AN UNDERGROUND SPRINKLER SYSTEM CONSISTING OF A CONTROLLER AND 1/2" O.C. SPRINKLER HEADS PROVIDING 100% COVERAGE. SYSTEM MUST BE 100% OPERABLE PRIOR TO INSTALLING ANY PLANT MATERIAL. GENERAL CONTRACTOR SHALL INSURE THAT THE ELECTRICAL CONTRACTOR HAS POWER TO THE SYSTEM AT THE TIME DESIGNATED BY THE LANDSCAPE CONTRACTOR.
4. ALL PLANTING AREAS SHALL BE MULCHED WITH 3" OF SOME QUALITY LARGE SIZE LAVA ROCK ON TOP OF A FULL COVERAGE OF PINNED FABRIC MAT, INCLUDING A 3' RADIUS OF PINNED FABRIC MAT AND LAVA ROCK AROUND ALL TREES. ADDITIONALLY, WHERE SOE SURROUNDS THE TREES WITH LAVA ROCK A PINNED PLASTIC EDGING SHALL BE PUT BETWEEN THE LAVA ROCK AND THE SOE.
5. ALL REMAINING NON-PAVED AREAS ARE LAWN AND SHALL BE SEED, UNLESS DESIGNATED TO BE SEED ON LANDSCAPE PLAN.
6. LANDSCAPE CONTRACTOR SHALL PROVIDE TREES OF SIZE AS INDICATED ON LANDSCAPE PLAN. NOTE THAT RYAN'S CALIBRATES HIS TREE SIZE AT 3'-0" FROM GROUND.

LANDSCAPE PLAN: ADDISON, TX.  
 AUGUST 28, 1991  
 REVISED OCT. 7, 1991  
 REVISED NOV. 12, 1991

A.M.D.C.

OVERSTREET ARCHITECTURAL ASSOCIATES  
 1000 NORTH MAIN STREET ANDERSON, SOUTH CAROLINA 29621

DRAWN BY: DATE: