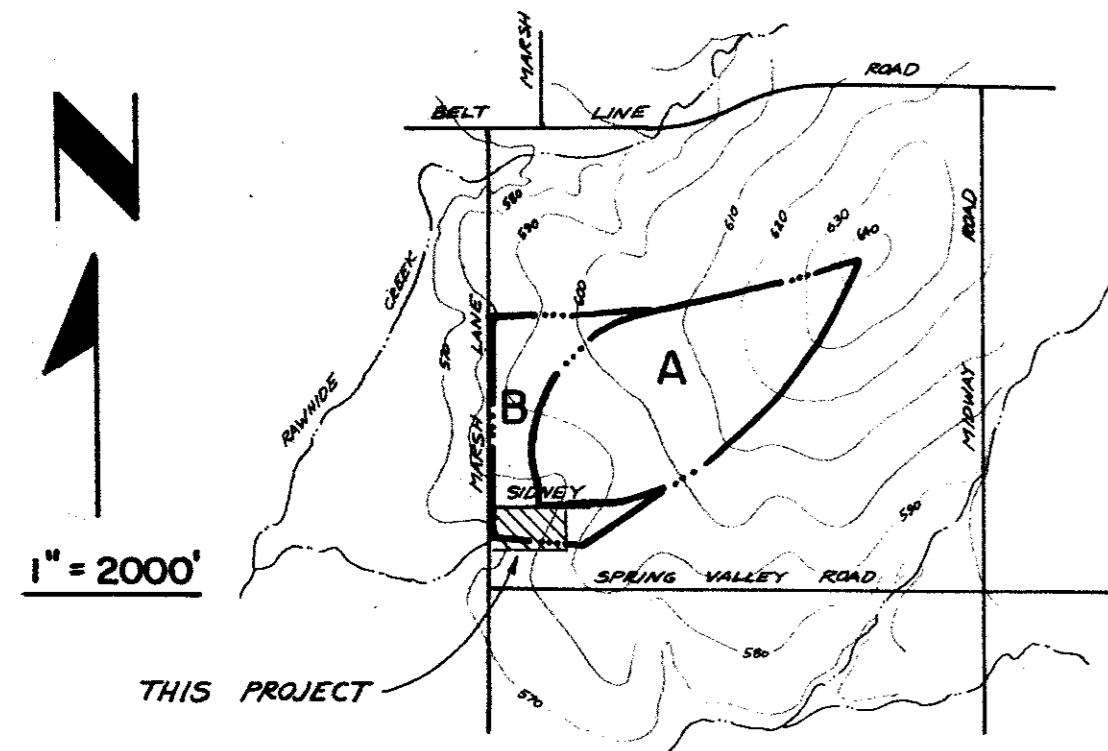


BENCH MARK
 '1' CUT IN TOP OF LIGHT STANDARD
 BASE AT PEBBLE BEACH DRIVE & MARSH LANE
 ELEV. 564.33

PLAN SCALE: 1" = 40'



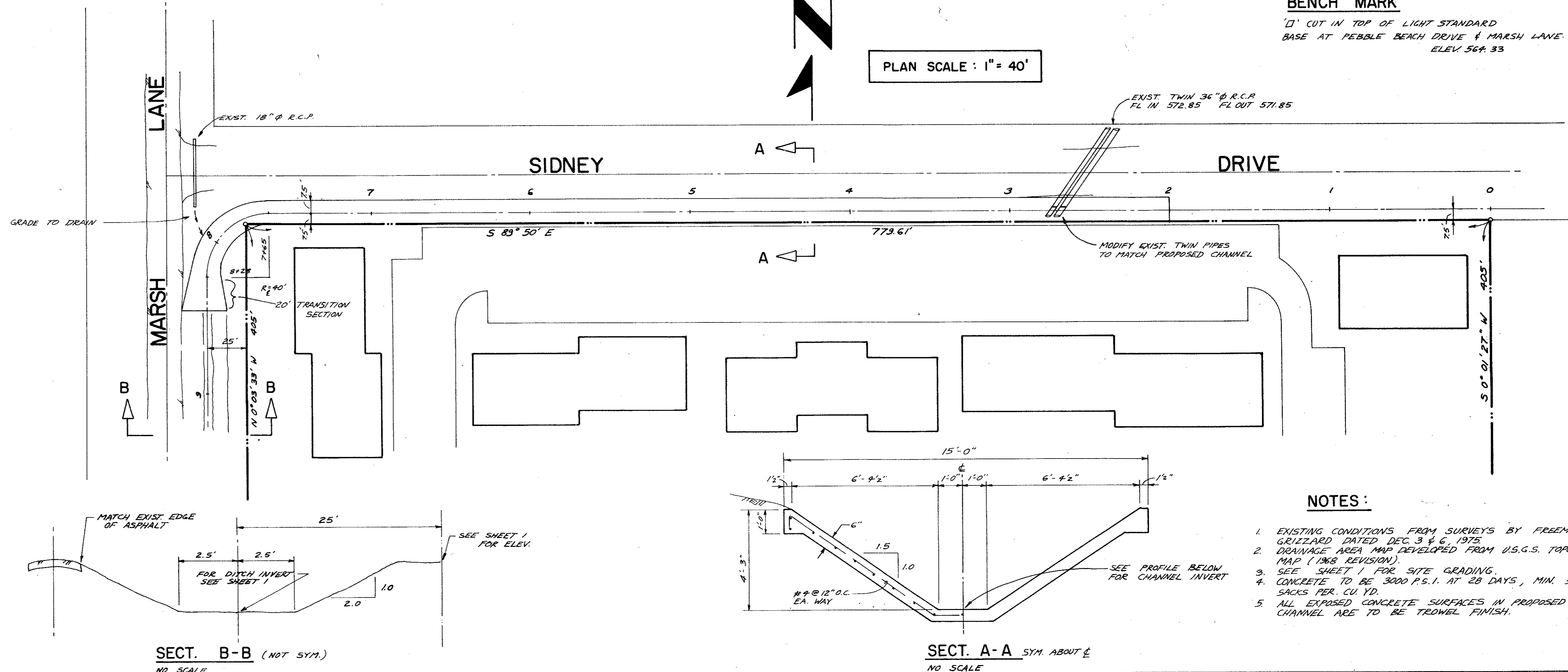
DRAINAGE AREA MAP

RUNOFF DESIGN

$x_c = 25$ MIN. (TO PIPES UNDER SIDNEY)
 $k_{10} = 4$ IN/HR. (FROM TECH. PAPER 25)
 $C = 0.85$ (AT. & RETAIL)
 $Q = C \cdot A$ (RATIONAL FORMULA)
 $Q_{10} = 3.4 A$

AREA 'A'
 $A_A = 101$ ACRES
 $Q_{10} = 3.4(101) = 343$ CFS

AREA 'B' (IN DITCH IN MARSH)
 $A_B = 46$ ACRES + $A_A = 147$ ACRES
 $Q_{10} = 3.4(147) = 500$ CFS



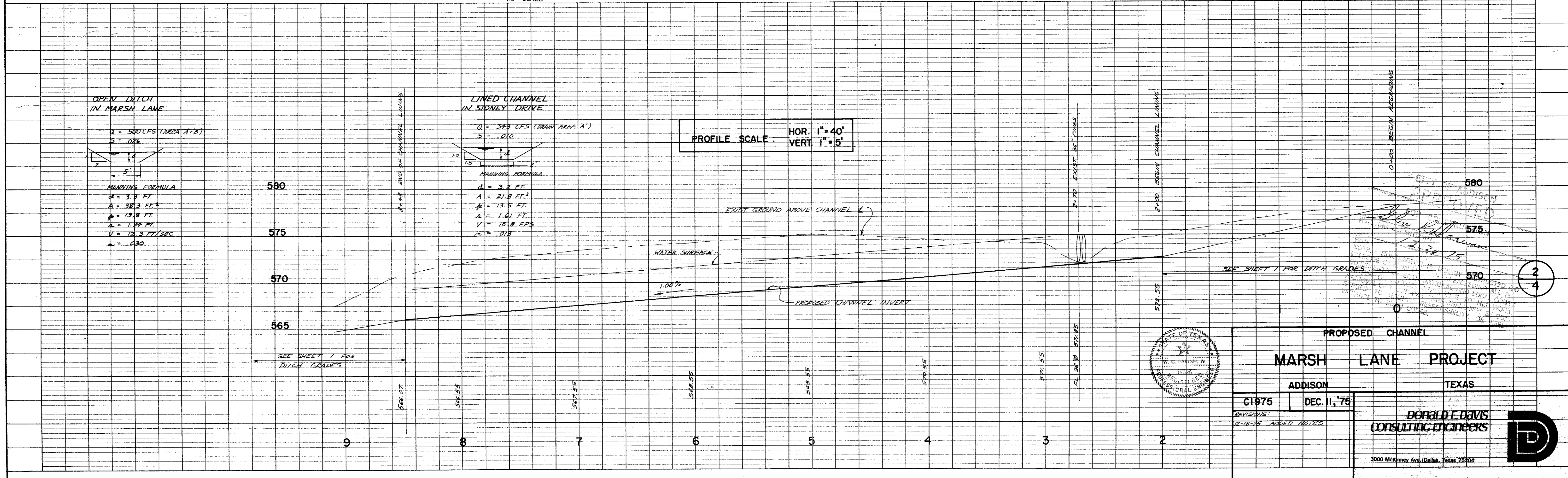
SECT. B-B (NOT SYM.)
 NO SCALE

SECT. A-A SYM. ABOUT $\frac{1}{2}$
 NO SCALE

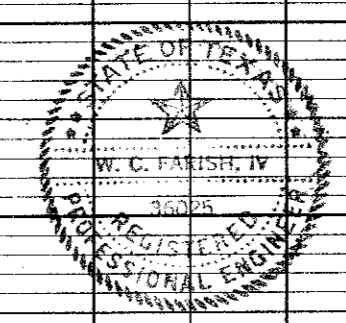
- NOTES:**
- EXISTING CONDITIONS FROM SURVEYS BY FREEMAN GRIZZARD DATED DEC. 3 & 6, 1975.
 - DRAINAGE AREA MAP DEVELOPED FROM U.S.G.S. TOPO. MAP (1968 REVISION).
 - SEE SHEET 1 FOR SITE GRADING.
 - CONCRETE TO BE 3000 P.S.I. AT 28 DAYS, MIN. 5 BAGS PER CU. YD.
 - ALL EXPOSED CONCRETE SURFACES IN PROPOSED CHANNEL ARE TO BE TROWEL FINISH.

DATE	
BY	
REVISIONS	
NO. BOOK	
NO.	

DATE	
BY	
REVISIONS	
NO. BOOK	
NO.	



PROFILE SCALE: HOR. 1" = 40'
 VERT. 1" = 5'



PROPOSED CHANNEL

MARSH LANE PROJECT

ADDISON TEXAS

C1975 DEC. 11, '75

REVISIONS:
 12-18-75 ADDED NOTES

DONALD E. DAVIS CONSULTING ENGINEERS

3000 McKinney Ave., Dallas, Texas 75204