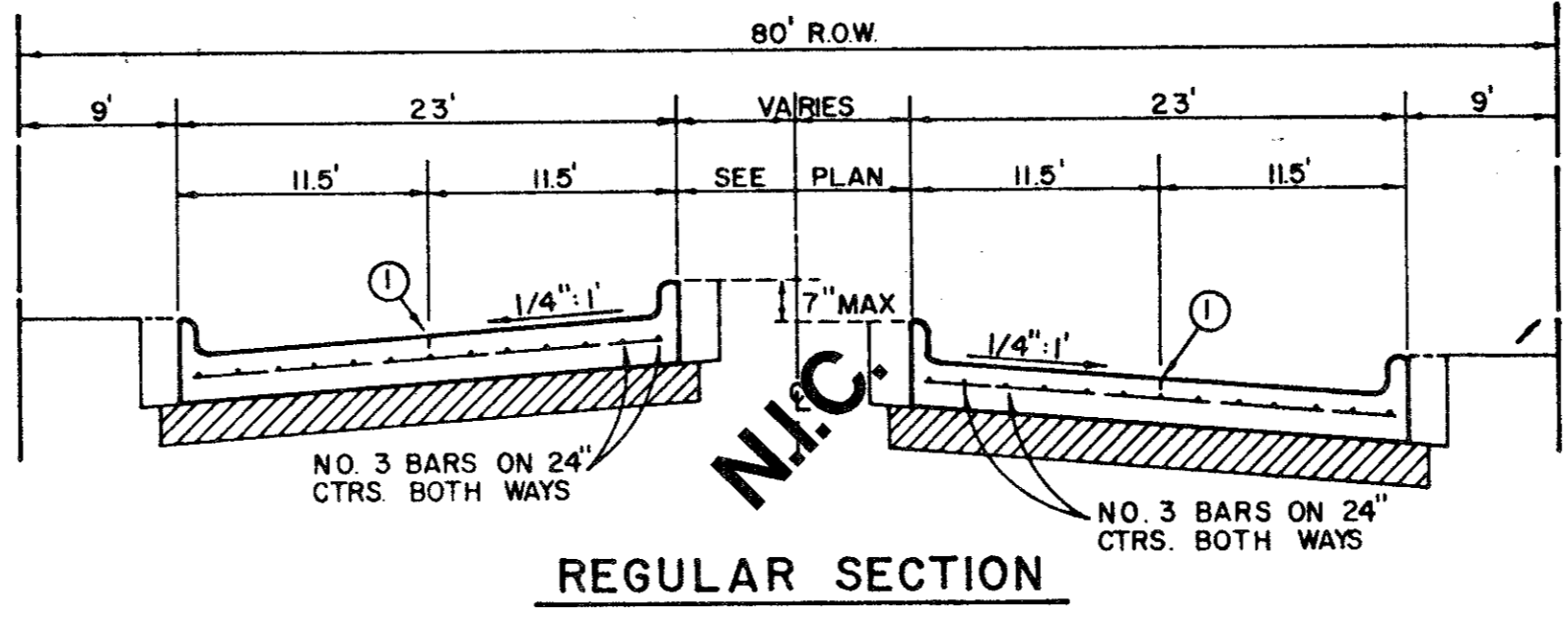
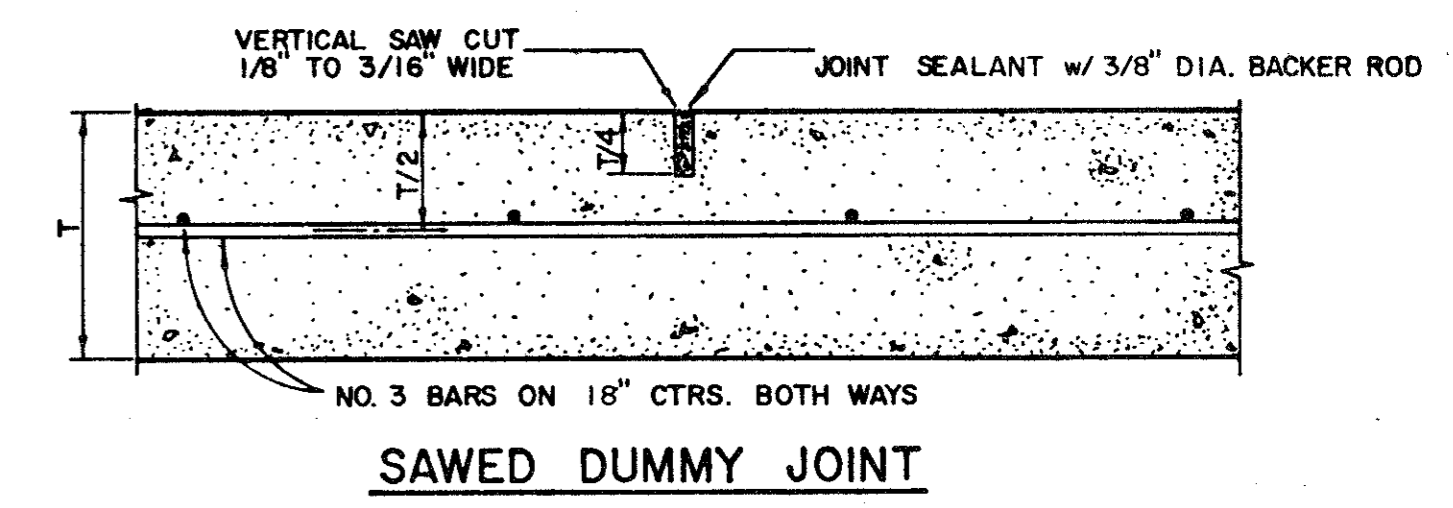


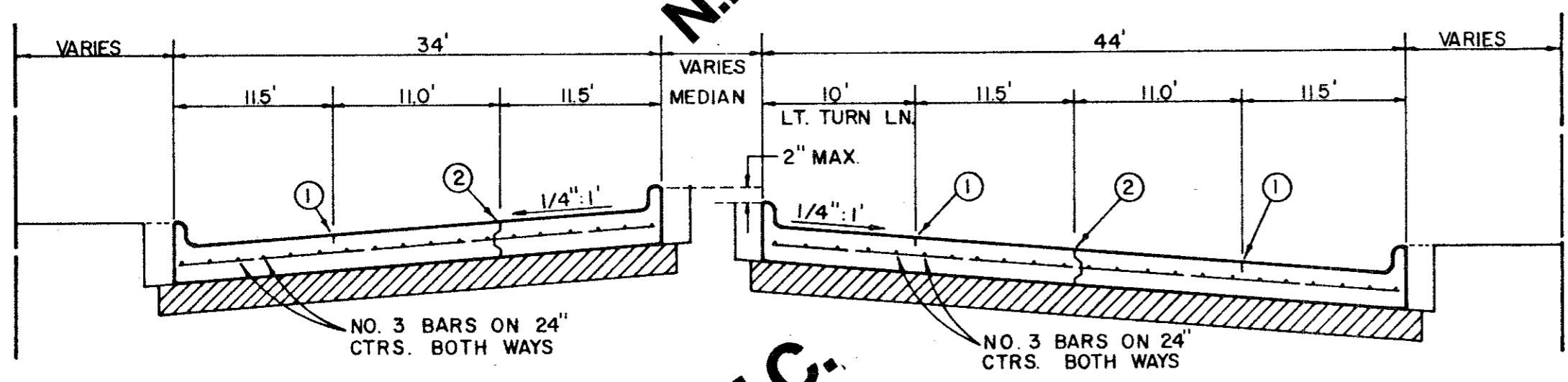
REGULAR SECTION



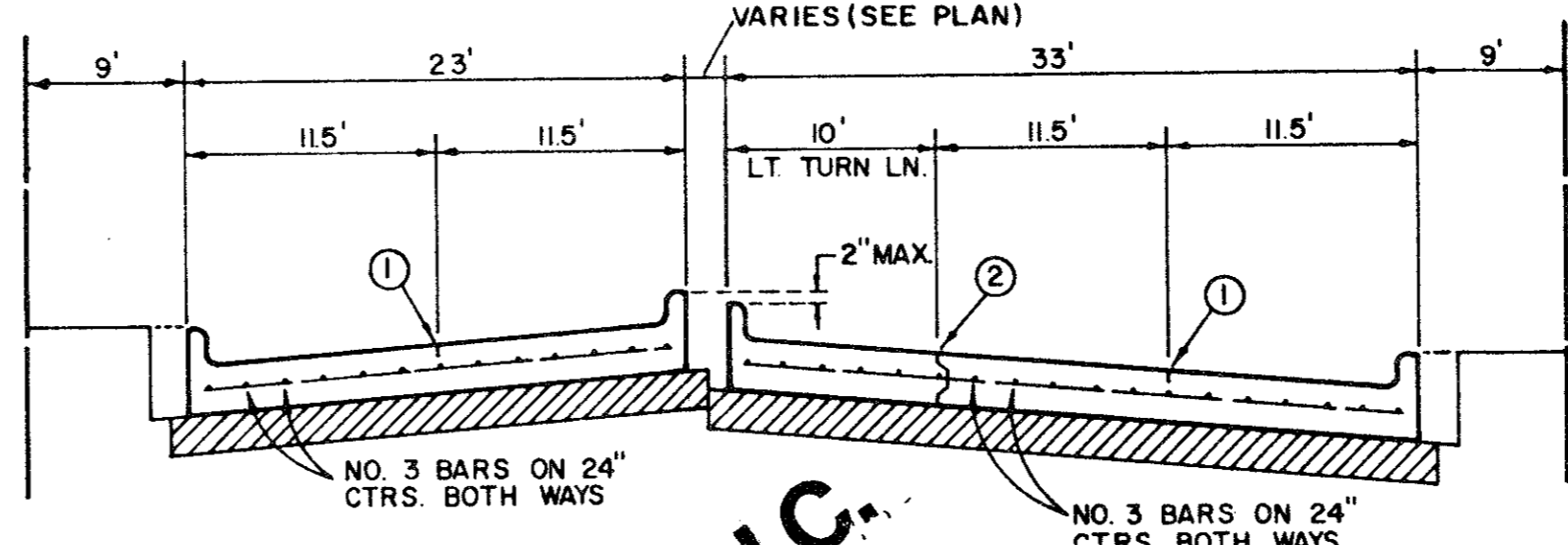
REGULAR SECTION



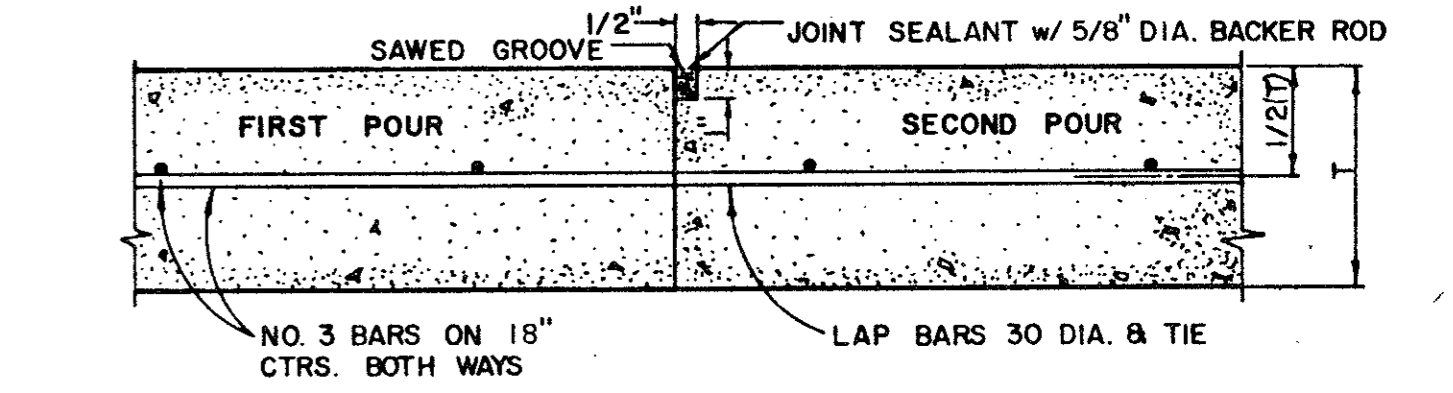
SAWED DUMMY JOINT



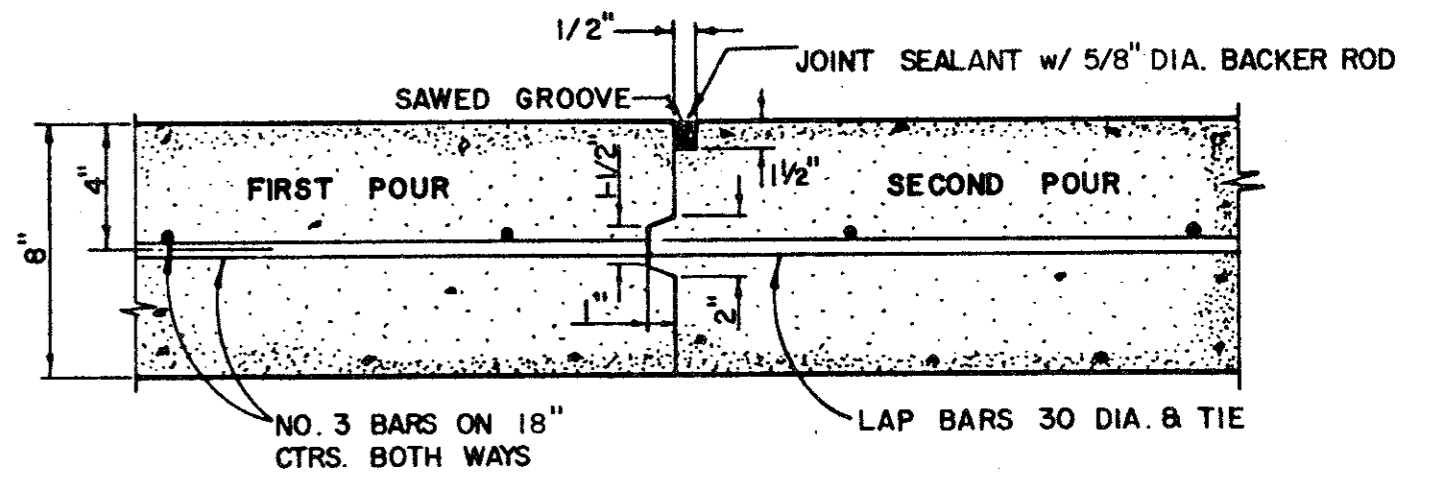
LEFT TURN SECTION  
MAJOR ARTERIAL



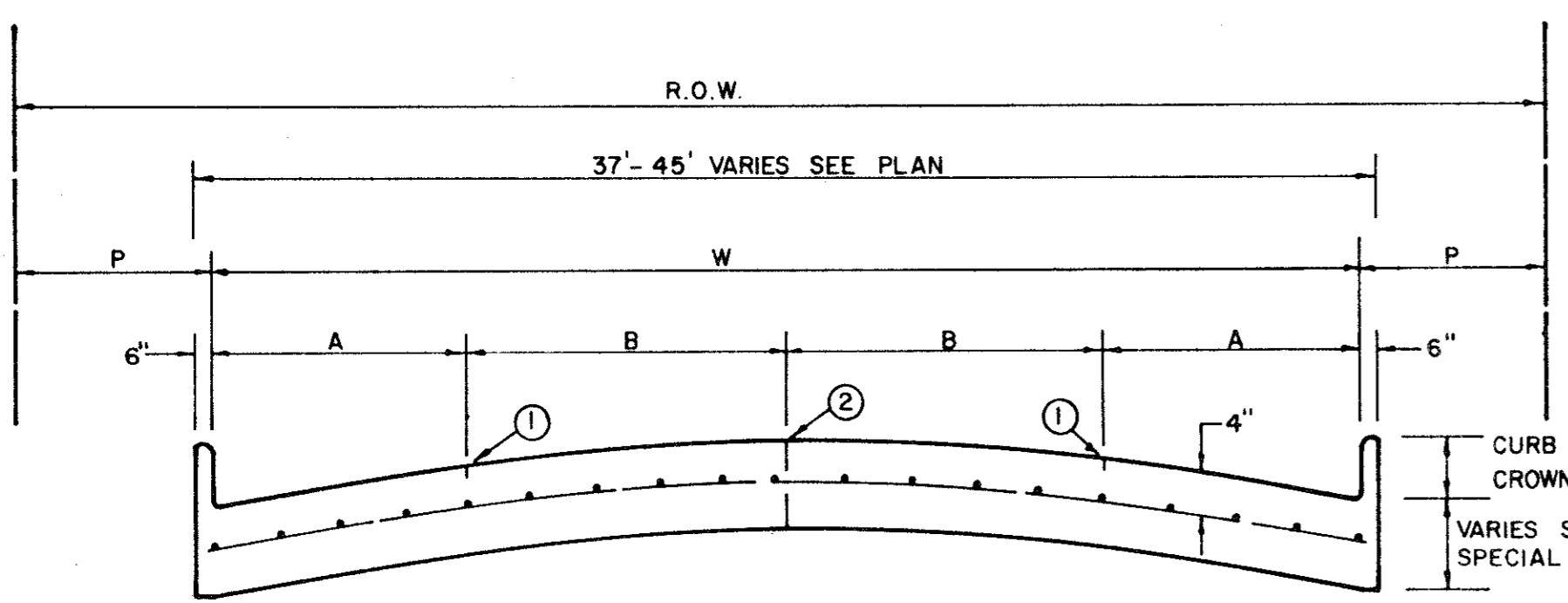
LEFT TURN SECTION  
MINOR ARTERIAL



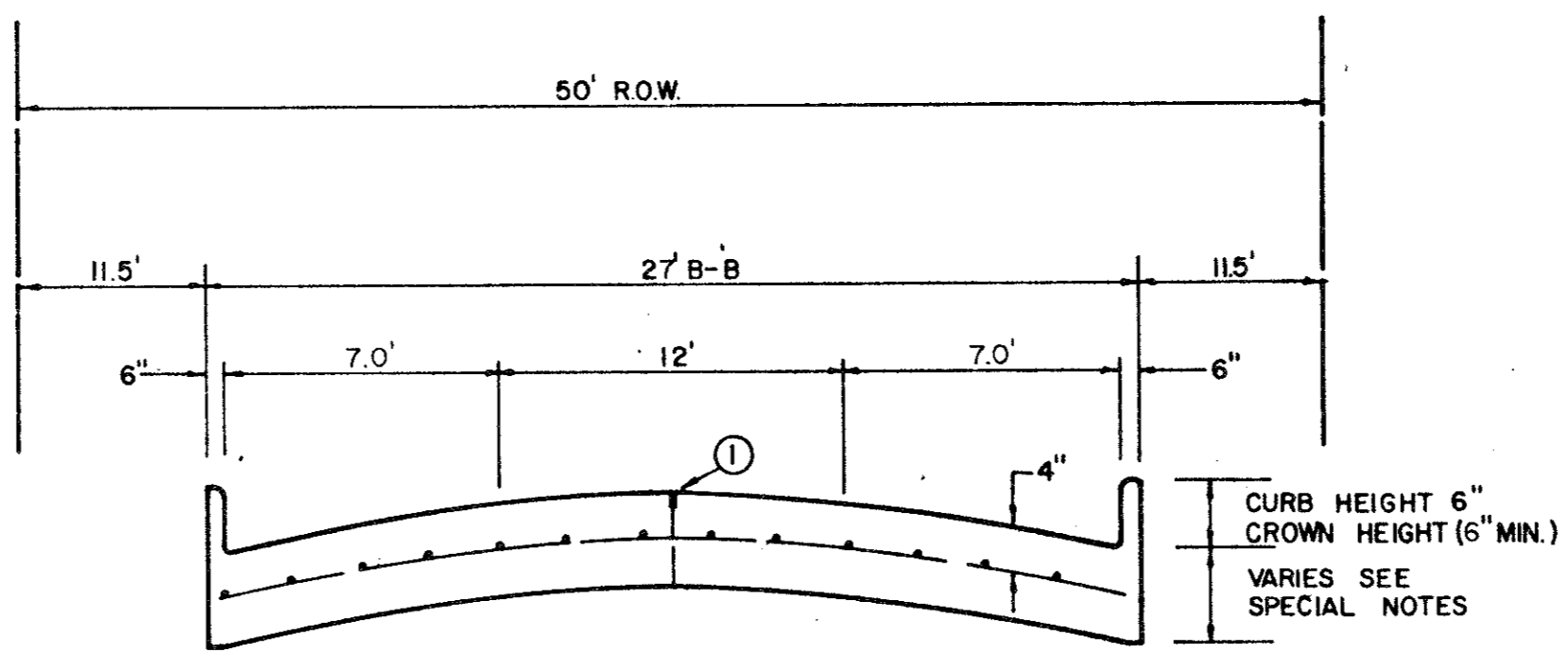
CONSTRUCTION JOINT FOR 6 INCH PAVEMENT



CONSTRUCTION JOINT FOR 8 INCH PAVEMENT



FOUR MOVING LANES OR TWO MOVING LANES/TWO PARKING LANES



ONE MOVING LANE / TWO PARKING LANES

STREET TYPE	STREET WIDTH (W)	A	B	R.O.W. WIDTH	P
COLLECTOR	36'	8'	10'	60'	11.5'
COLLECTOR	40'	8'	10' OR 12'	60'	9.5'
COLLECTOR	44'	11'	11'	65'	10.0'

COLLECTOR STREET

AS BUILT  
THE INTENT OF THE OWNER AND ENGINEER WAS TO CONSTRUCT THE FACILITIES ACCORDING TO THESE PLANS AS APPROVED BY THE CITY OF ADDISON. THE LINES AND GRADES WERE SET ON THE GROUND FOR CONSTRUCTION ACCORDING TO SAID PLANS. THE CITY OF ADDISON INSPECTED THE CONSTRUCTION. THE OWNER OR ENGINEER DID NOT VERIFY LINES OR GRADES AFTER CONSTRUCTION. WE ARE NOT AWARE OF ANY CHANGES OR REVISIONS TO THESE PLANS DURING CONSTRUCTION EXCEPT AS NOTED.

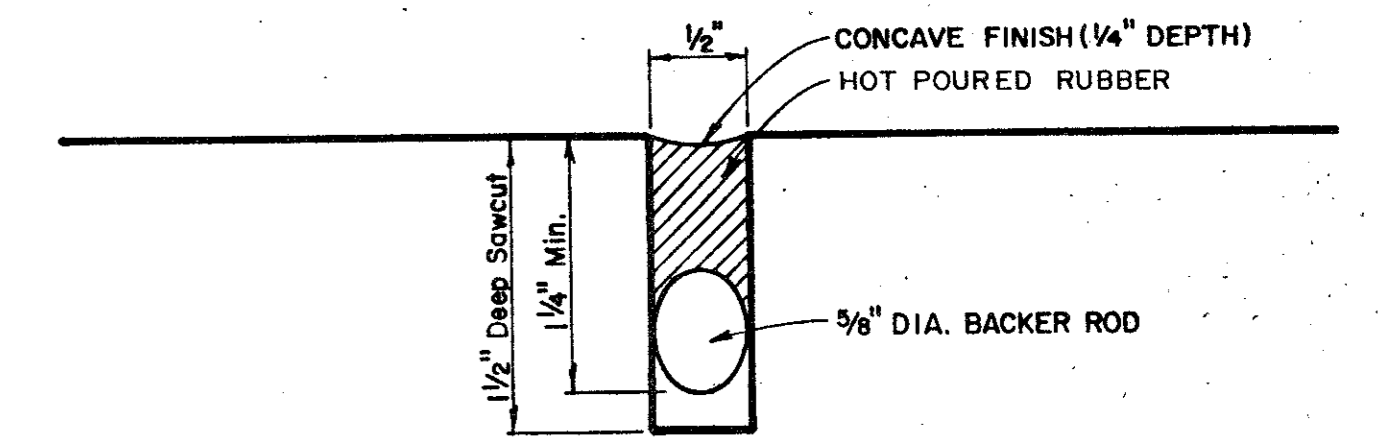
\* FULL WIDTH PAVEMENT OF 36' WIDTH STREETS IS ALLOWED WHERE APPROVED BY THE ENGINEER.

REINFORCED CONCRETE PAVEMENT

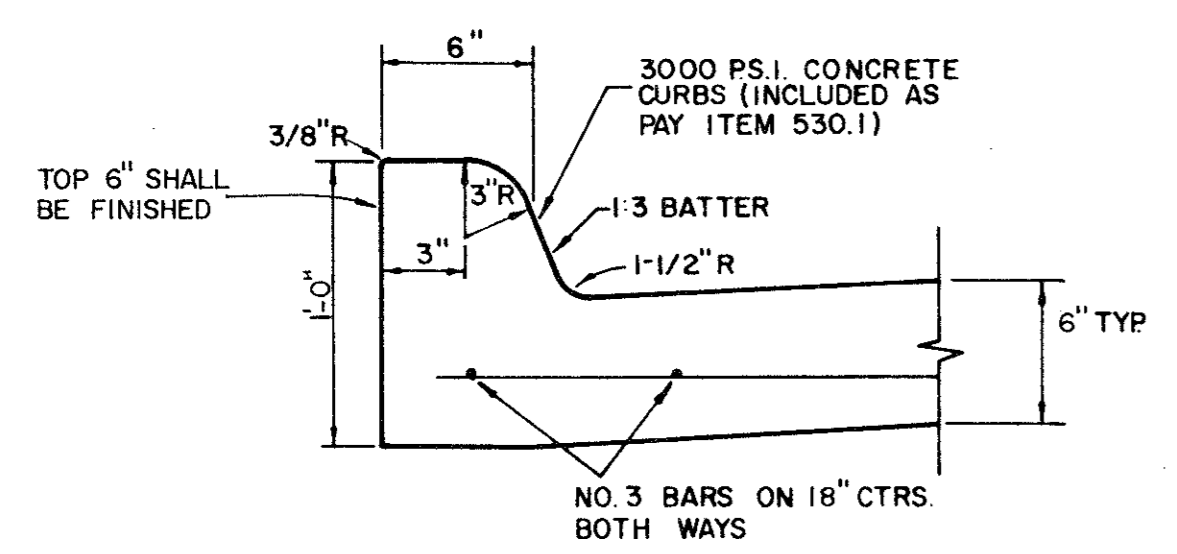
ALL REINFORCING BARS SHALL BE NO. 3 TRANSVERSE BARS TO BE SPACED ON 1'-6" CENTERS; LONGITUDINAL BARS TO BE SPACED ON 1'-6" EXCEPT WHERE NOTED.  
UNDIVIDED STREETS-PROVIDE 4" DBL.-REF YELLOW & BUTON P-117-Y PATTERNS TO BE ESTABLISHED BY ENGINEER. SEE DETAIL SHEET  
① SAWED LONGITUDINAL DUMMY JOINT.  
② CONSTRUCTION JOINT (FULL WIDTH PVMT IS ALLOWED WHERE APPROVED BY ENGINEER).  
③ FINISH SHALL BE TRANSVERSE WITH TRAFFIC LANES AND SHALL BE STEEL TINED BROOM FINISH.

GENERAL NOTES

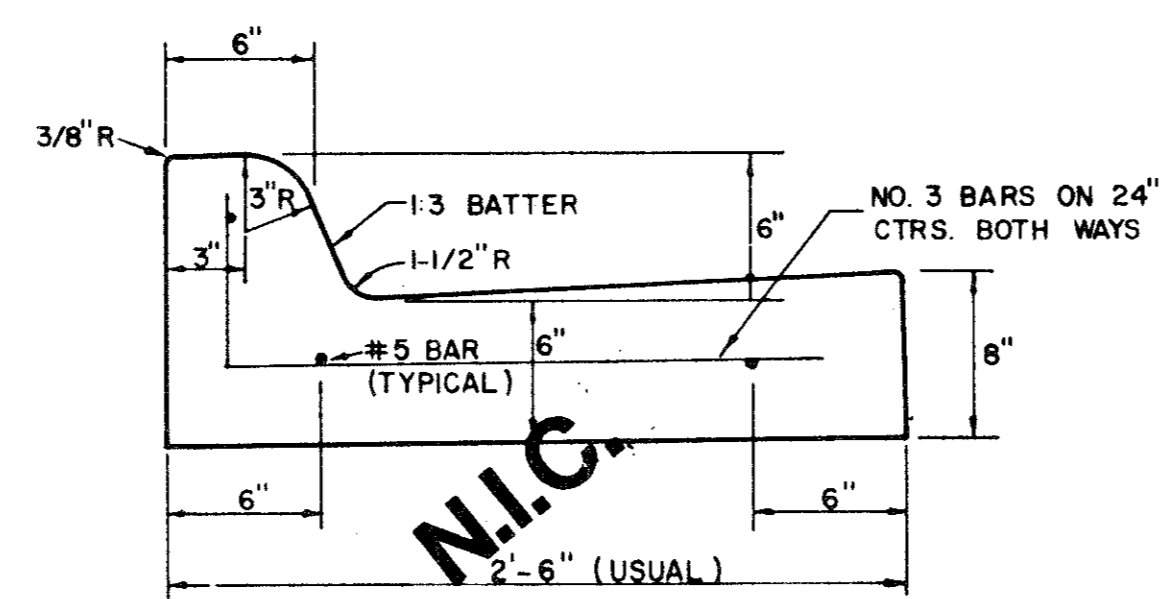
- A. GENERAL PAVEMENT THICKNESS FOR STREETS SHALL BE AS SPECIFIED BELOW IN SPECIAL NOTES.
- B. STANDARD SPECIFICATIONS REINFORCED CONCRETE PAVEMENTS
  1. ALL CURBS SHALL BE PLACED INTEGRAL WITH PAVEMENT
  2. CURBS SHALL MEET THE SAME COMPRESSIVE STRENGTH AS SPECIFIED FOR THE CONCRETE PAVEMENT
  3. DETAIL AND ARRANGEMENT OF JOINTS, ALL TYPES, SHALL BE AS SHOWN ON THE STANDARD CONSTRUCTION DETAILS, OR AS APPROVED BY ENGINEER.
  4. BAR LAPS SHALL BE 30 DIAMETERS.
- C. BAR CHAIRS OR AN APPROVED SUPPORTING DEVICE SHALL BE FURNISHED.



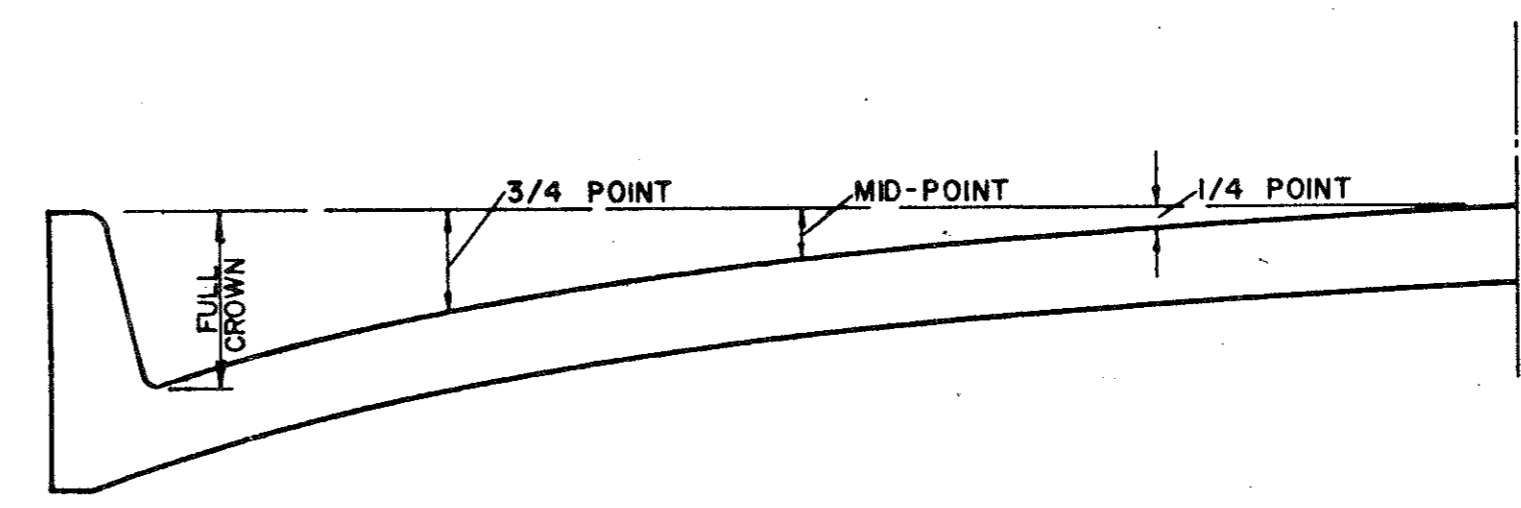
TYPICAL JOINT DETAIL



STANDARD CURB

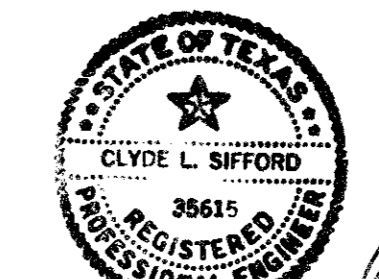


SEPARATE CURB AND GUTTER



ROADWAY WIDTH (W)	TOTAL CROWN HEIGHT	3/4 POINT	MID-POINT	1/4 POINT
26'	6"	3-3/8"	1-1/2"	3/8"
36'	6"	3-3/8"	1-1/2"	3/8"
44'	6"	3-3/8"	1-1/2"	3/8"
48'	6"	3-3/8"	1-1/2"	3/8"

TABLE OF CROWN HEIGHTS AND ORDINATES FOR VARIOUS PARABOLIC SECTIONS



STANDARD CONSTRUCTION DETAILS

**WATERFORD COURT**  
TOWN OF ADDISON, TEXAS

Date: NOV., 1993 Scale: AS SHOWN SHEET 18 OF  
Drawn By: TNC Approved By: TNC SHEETS

**NC THE NELSON CORPORATION**  
LAND PLANNING • ENGINEERING • SURVEYING  
5999 SUMMERSIDE DRIVE • SUITE 202 • DALLAS, TEXAS 75252 • (214) 380-2605