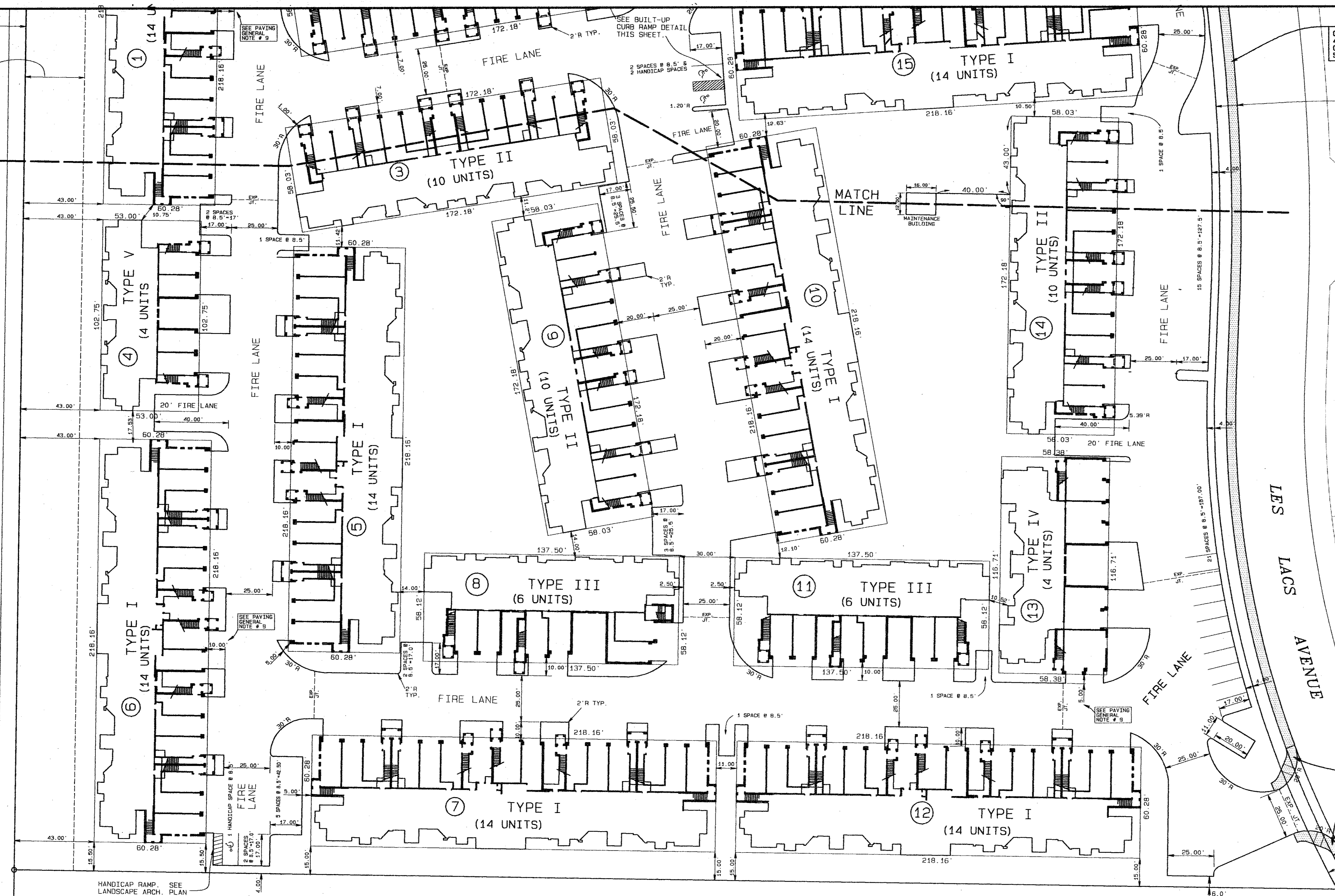


CITY OF FARMERS BRANCH
TOWN OF ADDISON
MARSH LANE
32.5' GREENBELT & UTILITY EASEMENT
DEDICATION TO THE TOWN OF ADDISON



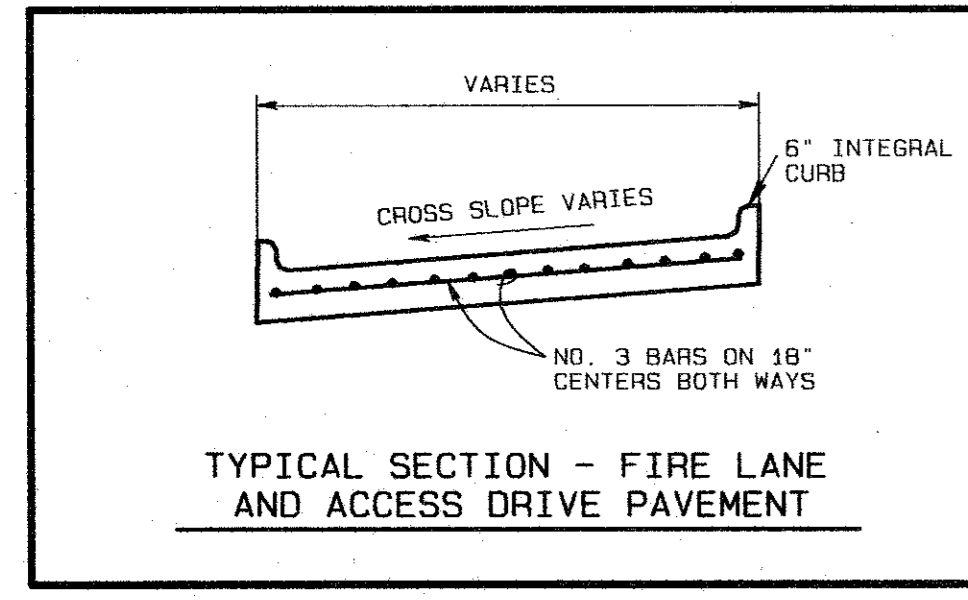
CONSTR. 5' WIDE
4" THICK, 3000 PSI
CONCRETE SIDEWALK
SEE STANDARD DETAILS

PROPOSED 11.5' R.O.W.
DEDICATION TO THE
CITY OF ADDISON

CONSTR. BARRIER
FREE RAMP. SEE
DETAILS.

11.5' PEDESTRIAN ACCESS ESMT
VOL. 82016, PG. 1073

VILLAS OF LES LACS I



AS BUILTS
THE INTENT OF THE OWNER AND ENGINEER WAS TO CONSTRUCT THE FACILITIES ACCORDING TO THESE PLANS AS APPROVED BY THE CITY OF ADDISON. THE LINES AND GRADES WERE SET ON THE GROUND FOR CONSTRUCTION ACCORDING TO SAID PLANS. THE CITY OF ADDISON INSPECTED THE CONSTRUCTION. THE OWNER OR ENGINEER DID NOT VERIFY LINES OR GRADES AFTER CONSTRUCTION. WE ARE NOT AWARE OF ANY CHANGES OR REVISIONS TO THESE PLANS DURING CONSTRUCTION EXCEPT AS NOTED.



BENCHMARKS:
SQUARE CUT ON CENTERLINE OF 14" INLET AT THE N.E. CORNER OF THE INTERSECTION OF BELTWAY DRIVE AND MARSH LANE. ELEVATION 585.20
SQUARE CUT IN CENTER OF THIRD INLET WEST OF THE EAST ADDITION LINE OF WATERFORD PARK II AND ON THE NORTH SIDE LES LACS AVENUE. ELEVATION 587.61

DIMENSION CONTROL & PAVING PLAN
WATERFORD COURT APARTMENTS
TOWN OF ADDISON, TEXAS
Date: MAR. 17, 1994 Scale: 1" = 30' Sheet: 4
Drawn By: TNC Approved By: TNC Project No.: 86126.10
THE NELSON CORPORATION
PLANNING • ENGINEERING • SURVEYING
LANDSCAPE ARCHITECTURE • CONSTRUCTION MANAGEMENT
6999 SUMMERSIDE DRIVE SUITE 202 • DALLAS, TEXAS 75262 • (214) 380-2805