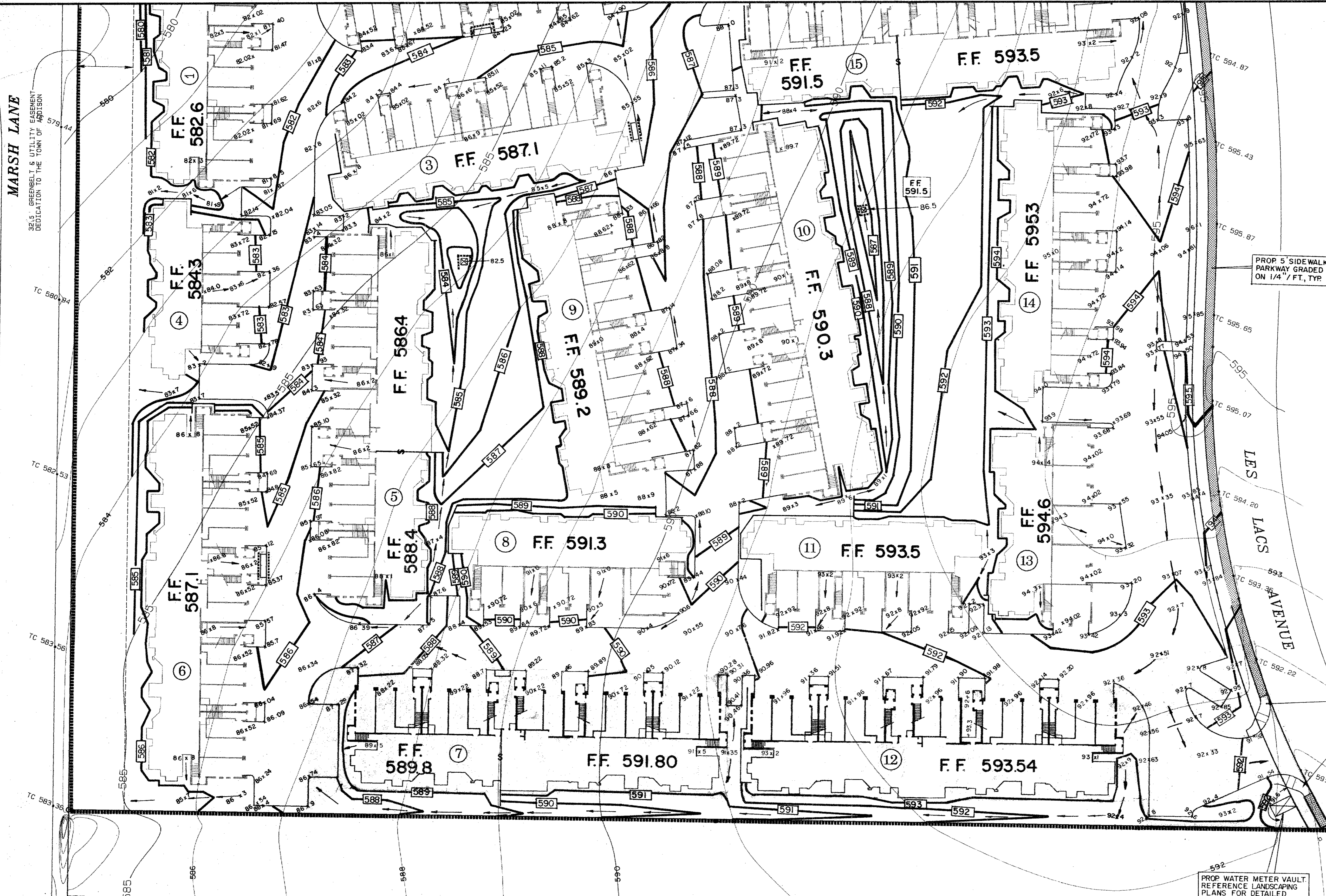


MARSH LANE
 SEE GREENBELT & UTILITY EASEMENT
 DEDICATED TO THE TOWN OF ADDISON



PROP 5' SIDEWALK
 PARKWAY GRADED
 ON 1/4" / FT. TYP.

CONSTRUCT BARRIER
 FREE RAMP (TYP.)

PROP WATER METER VAULT
 REFERENCE LANDSCAPING
 PLANS FOR DETAILED
 GRADING
 TOP OF VAULT 592.00

GRAND ADDISON

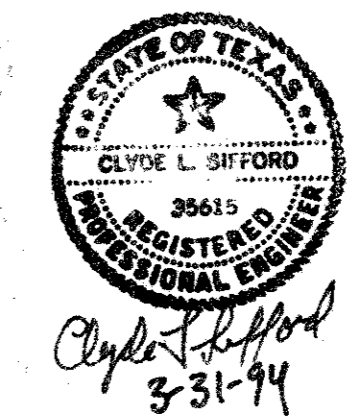
AS BUILTS

THE INTENT OF THE OWNER AND ENGINEER WAS TO CONSTRUCT THE FACILITIES ACCORDING TO THESE PLANS AS APPROVED BY THE CITY OF ADDISON. THE LINES AND GRADES WERE SET ON THE GROUND FOR CONSTRUCTION ACCORDING TO SAID PLANS. THE CITY OF ADDISON INSPECTED THE CONSTRUCTION. THE OWNER OR ENGINEER DID NOT VERIFY LINES OR GRADES AFTER CONSTRUCTION. WE ARE NOT AWARE OF ANY CHANGES OR REVISIONS TO THESE PLANS DURING CONSTRUCTION EXCEPT AS NOTED.

BENCHMARKS:
 SQUARE CUT ON CENTERLINE OF 14' INLET AT THE N.E. CORNER OF THE INTERSECTION OF BELTWAY DRIVE AND MARSH LANE. ELEV. 585.20
 SQUARE CUT IN CENTER OF THIRD INLET WEST OF THE EAST ADDITION LINE OF WATERFORD PARK II AND ON THE NORTH SIDE LES LACS AVENUE. ELEV. 587.61

LEGEND

- EXISTING CONTOURS
- PROPOSED CONTOURS
- FLOW ARROW
- PROPOSED SPOT ELEVATION OR TOP OF PAVEMENT
- EROSION CONTROL DEVICE BY GRADING CONTRACTOR
- EROSION CONTROL DEVICE BY UTILITY CONTRACTOR
- PROBABLE WALL



GRADING & EROSION CONTROL PLAN

WATERFORD COURT APARTMENTS
TOWN OF ADDISON, TEXAS

Date: 3/31/94 Scale: 1" = 30' Sheet: 6
 Drawn By: TNC Approved By: TNC Project No.: 86126.10

THE NELSON CORPORATION
 PLANNING • ENGINEERING • SURVEYING
 LANDSCAPE ARCHITECTURE • CONSTRUCTION MANAGEMENT
 5999 SUMMERSIDE DRIVE SUITE 202 • DALLAS, TEXAS 75252 • (214) 380-2805

SWPPP