

**NOTE:**  
 PROPOSED INLETS AND STORM SEWER BY OTHERS REFER MARSH/BELTLINE SHOPPING CENTER PLANS BY BROCKETTE, DAVIS, & DRAKE, INC., 8-14-97.

**HYDROLOGIC SUMMARY TABLE**

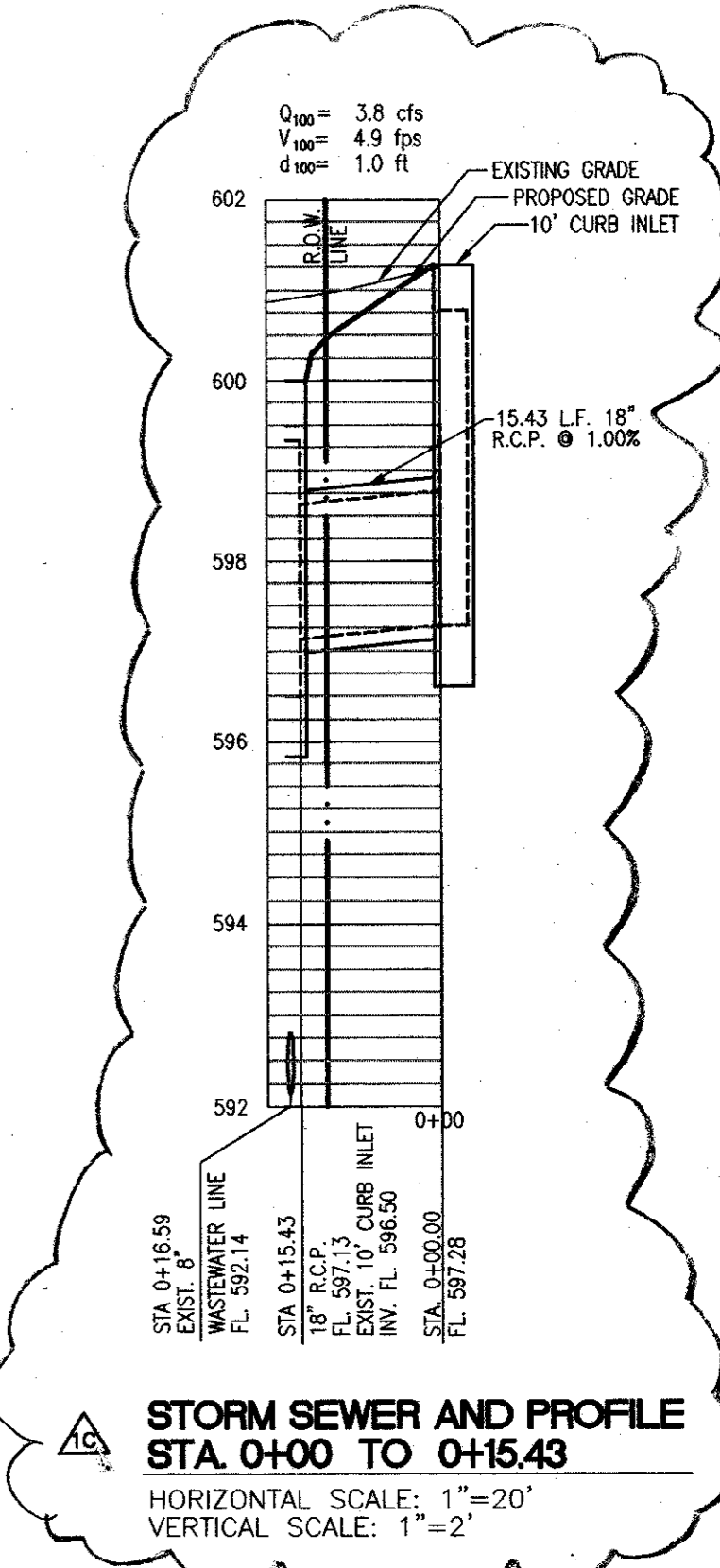
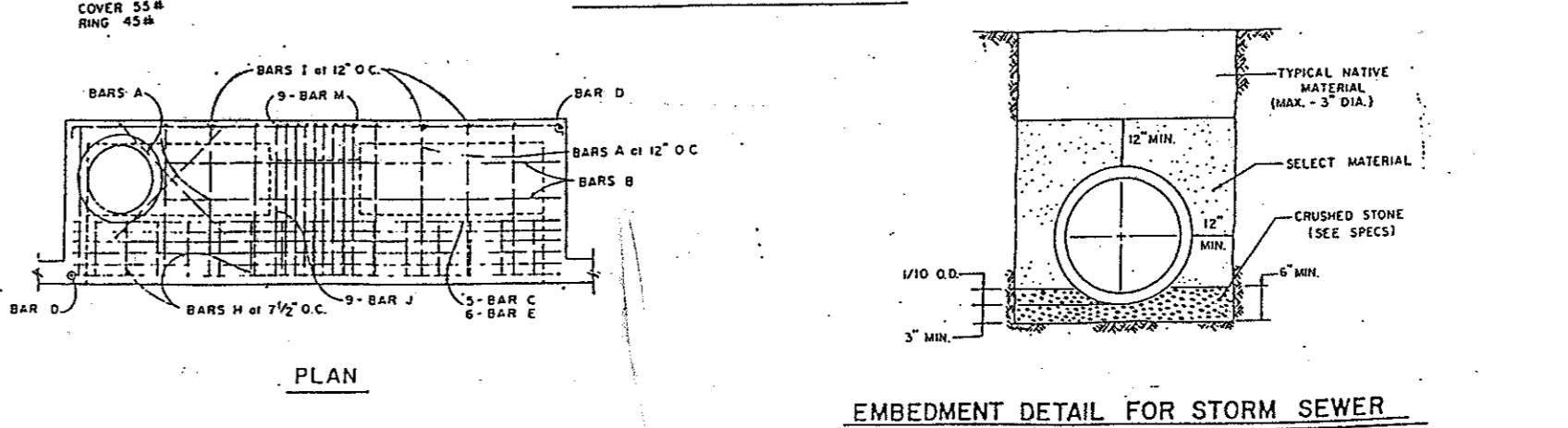
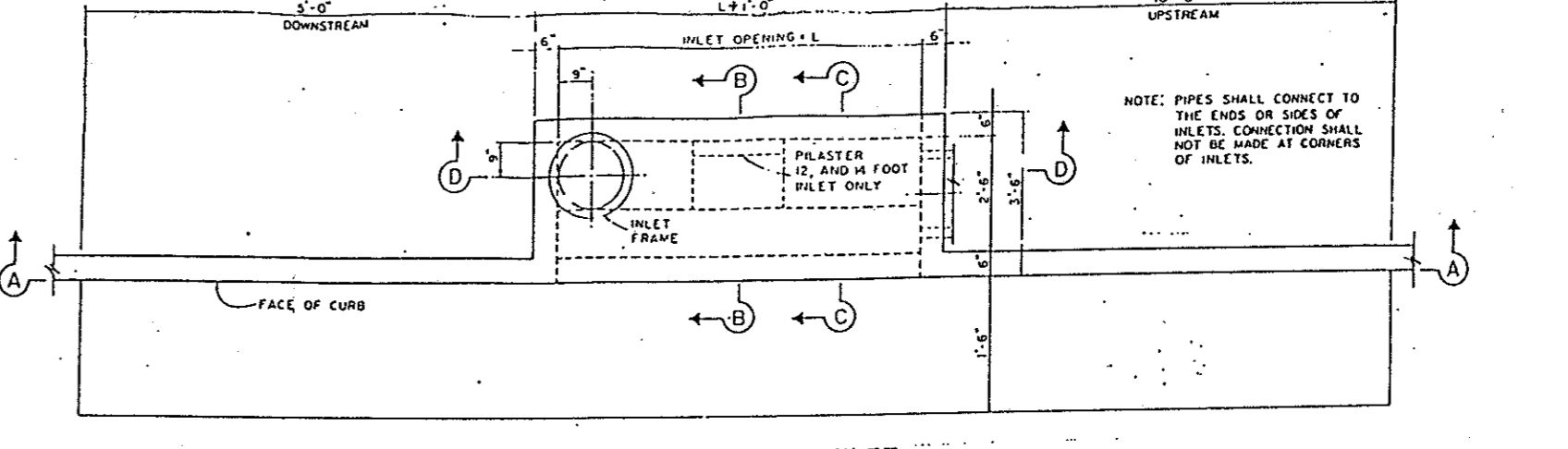
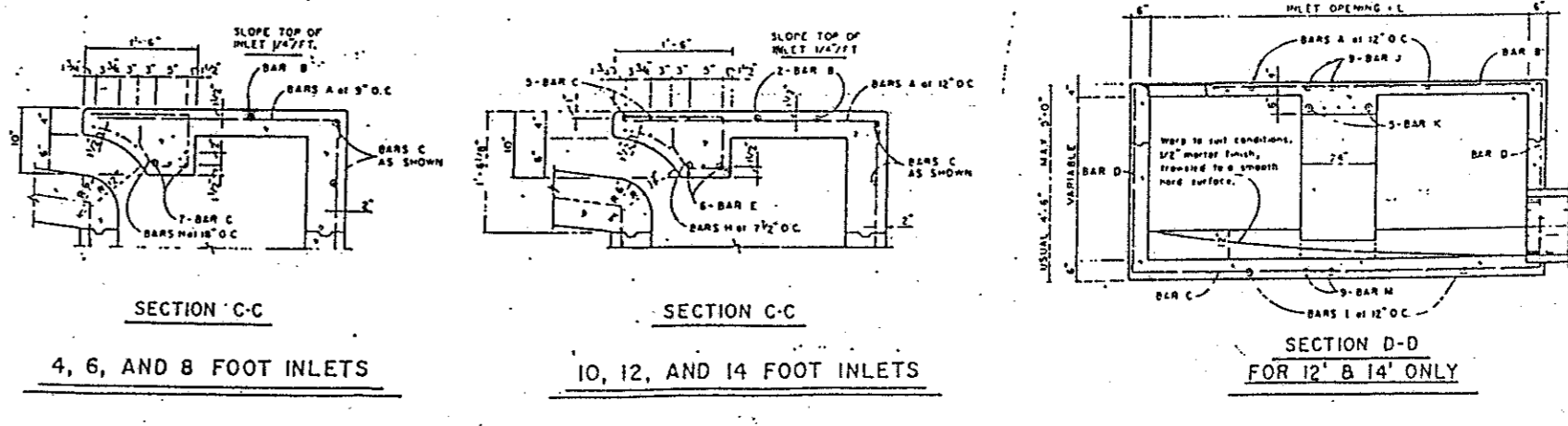
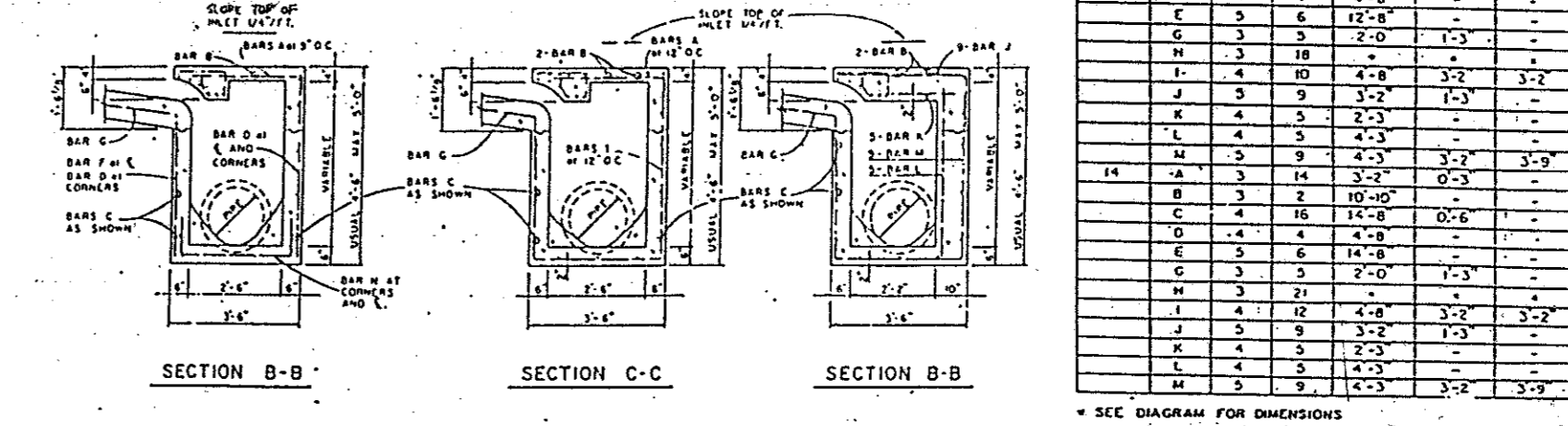
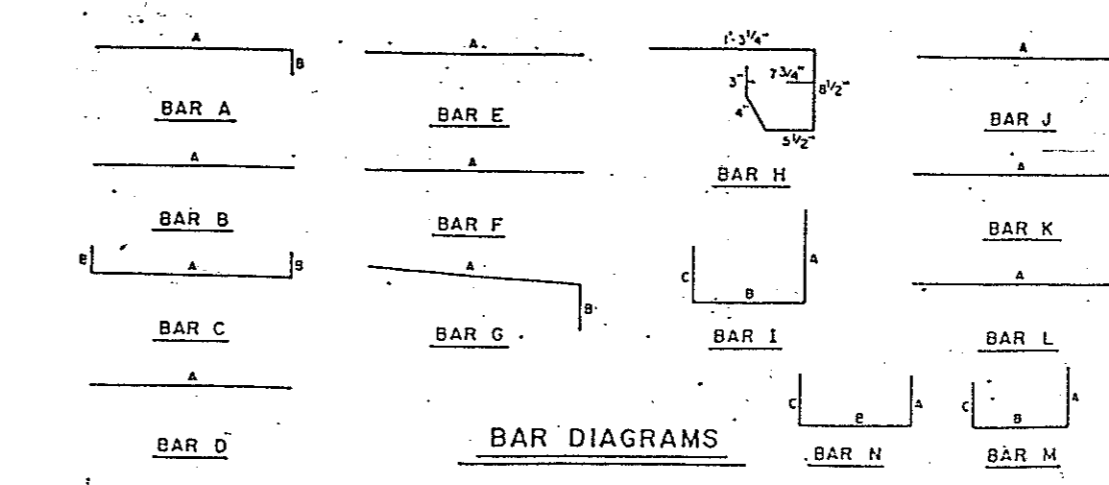
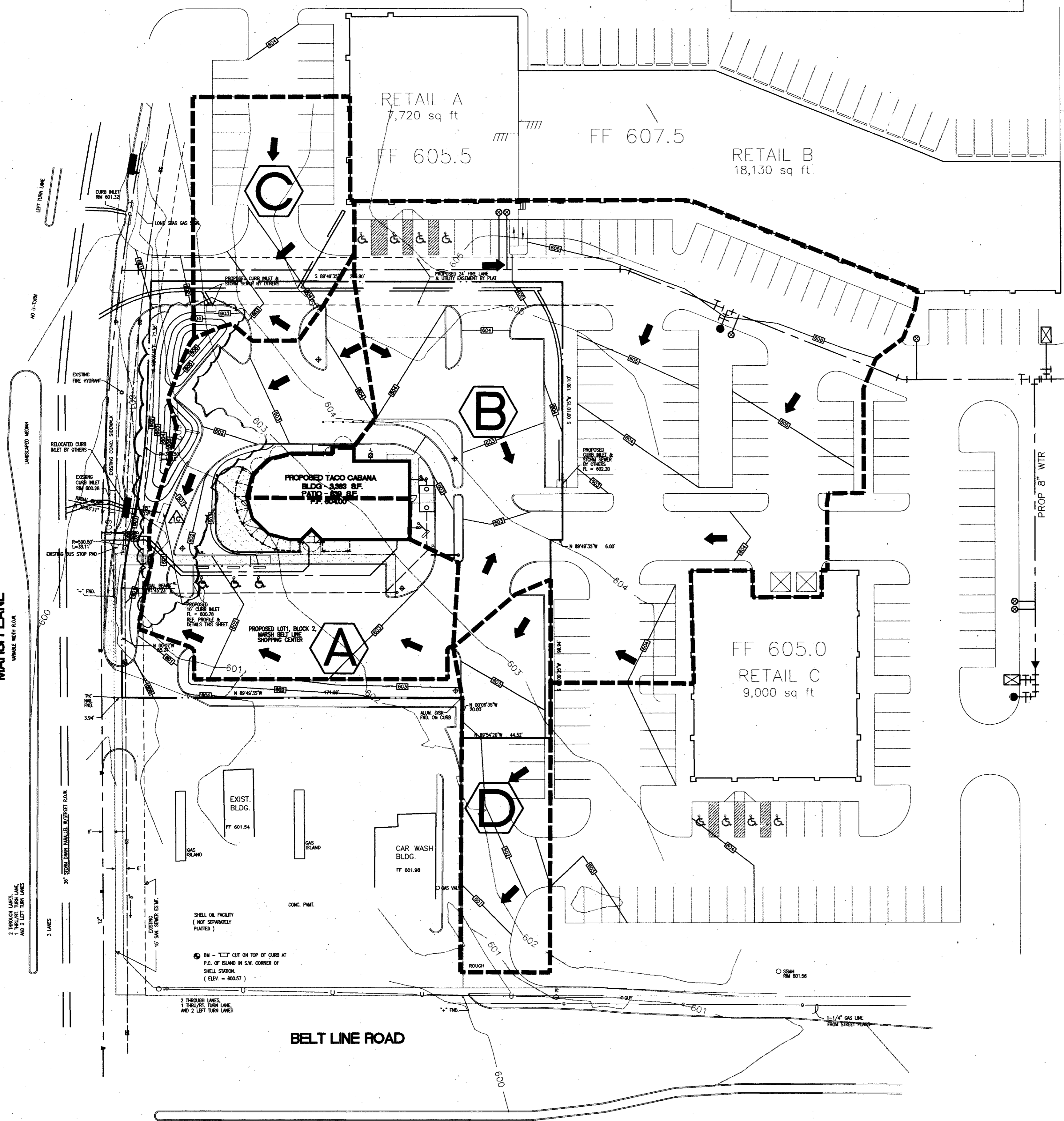
Subarea Number	Area (acres)	Tc (min)	i100 (in/hr)	C100	Q100 (cfs)
A	0.47	10.0	8.88	0.90	3.8
B	1.18	10.0	8.88	0.90	9.4
C	0.21	10.0	8.88	0.90	1.7
D	0.19	10.0	8.88	0.90	1.5

- LEGEND**
- TG TOP OF GRATE
  - INV INVERT
  - FL FLOW LINE
  - HP HIGH POINT
  - BC BOTTOM OF CURB
  - TC TOP OF CURB
  - TW TOP OF WALL
  - BOC BACK OF CURB
  - FOC FACE OF CURB
  - RETAINING WALL
  - MORTAR STACK ROCK WALL
  - WATER LINE
  - WASTE WATER LINE
  - STORM SEWER LINE
  - FIRE HYDRANT
  - FIRE METER
  - POWER POLE
  - OVERHEAD ELECTRIC
  - EXISTING SPOT ELEVATION
  - PROPOSED SPOT ELEVATION
  - MISC. CONCRETE PAVING
  - LIMITS OF CONSTRUCTION
  - PROPERTY LINE
  - SILT FENCE
  - ▲ DRAINAGE AREA
  - DRAINAGE AREA BOUNDARY
  - +++++ FILTER DIKE
  - XXX TREE PROTECTION FENCE
  - EXISTING CONTOUR
  - PROPOSED CONTOUR
  - EXISTING TREE TO REMAIN
  - EXISTING TREE TO BE REMOVED
  - TRAFFIC GUARD RAIL
  - FIRE LANE DESIGNATION
  - HAND RAILS

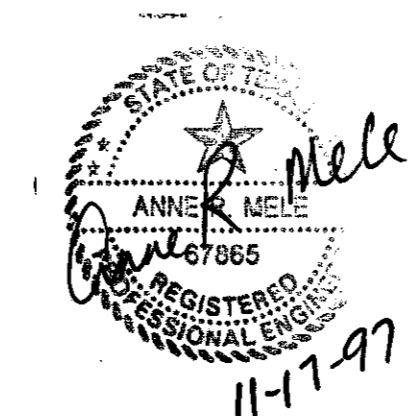
**REINFORCING STEEL SCHEDULE**

DIMENSIONS SHOWN ARE FOR MAXIMUM SIZE INLETS

INLET	BAR	NO.	BAR	NO.	BAR	NO.	BAR	NO.
A	3	6	3	2	3	2	3	2
B	3	12	3	2	3	2	3	2
C	3	12	3	2	3	2	3	2
D	3	12	3	2	3	2	3	2
E	3	12	3	2	3	2	3	2
F	3	12	3	2	3	2	3	2
G	3	12	3	2	3	2	3	2
H	3	12	3	2	3	2	3	2
I	3	12	3	2	3	2	3	2
J	3	12	3	2	3	2	3	2
K	3	12	3	2	3	2	3	2
L	3	12	3	2	3	2	3	2
M	3	12	3	2	3	2	3	2
N	3	12	3	2	3	2	3	2
O	3	12	3	2	3	2	3	2
P	3	12	3	2	3	2	3	2
Q	3	12	3	2	3	2	3	2
R	3	12	3	2	3	2	3	2
S	3	12	3	2	3	2	3	2
T	3	12	3	2	3	2	3	2
U	3	12	3	2	3	2	3	2
V	3	12	3	2	3	2	3	2
W	3	12	3	2	3	2	3	2
X	3	12	3	2	3	2	3	2
Y	3	12	3	2	3	2	3	2
Z	3	12	3	2	3	2	3	2



**ATTENTION**  
 THE ENGINEER ASSUMES NO RESPONSIBILITY FOR THE EXISTENCE OR LOCATION OF ANY SURFACE OR SUBSURFACE STRUCTURES. THE CONTRACTOR IS RESPONSIBLE FOR CONTACTING ALL AGENCIES AND/OR OWNERS TO VERIFY THIS INFORMATION.  
 ALL CONSTRUCTION MATERIALS AND TECHNIQUES SHALL CONFORM TO CURRENT TOWN OF ADDISON STANDARD SPECIFICATIONS.



1191-004  
 FILENAME: TCA-DRN.DWG  
 XREF: TCA-ASE.DWG

**DRAINAGE PLAN AS BUILT**

**TACO CABANA**  
 3801 BELT LINE ROAD

**SHT. 5 OF 10**

DATE: 9-23-97 SCALE: 1" = 30' DRAWN BY: BB

REVISIONS: 11-17-97

**Consort, Inc.**  
 315 Bowie / Austin, TX 78703 / (512) 469-0500