

Const. Barrier Free Ramp
per City Stda.(Typ.) Remove
36 L.F. ex. conc. sidewalk

Delta=07'18"58"
Radius=1223.09'
Arc=156.18'
Tangent=78.20'
Chd.156.07'
C.B.=N 11°03'01" E

Full-depth sawcut, remove & dispose
of ex. conc. curb & gutter. Dowel & epoxy
grout #4 bars (min. 9" deep) into ex.
pvtmt & conn. prop. reinforcement.

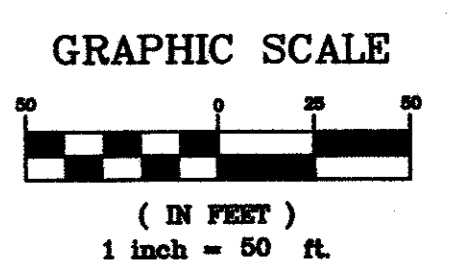
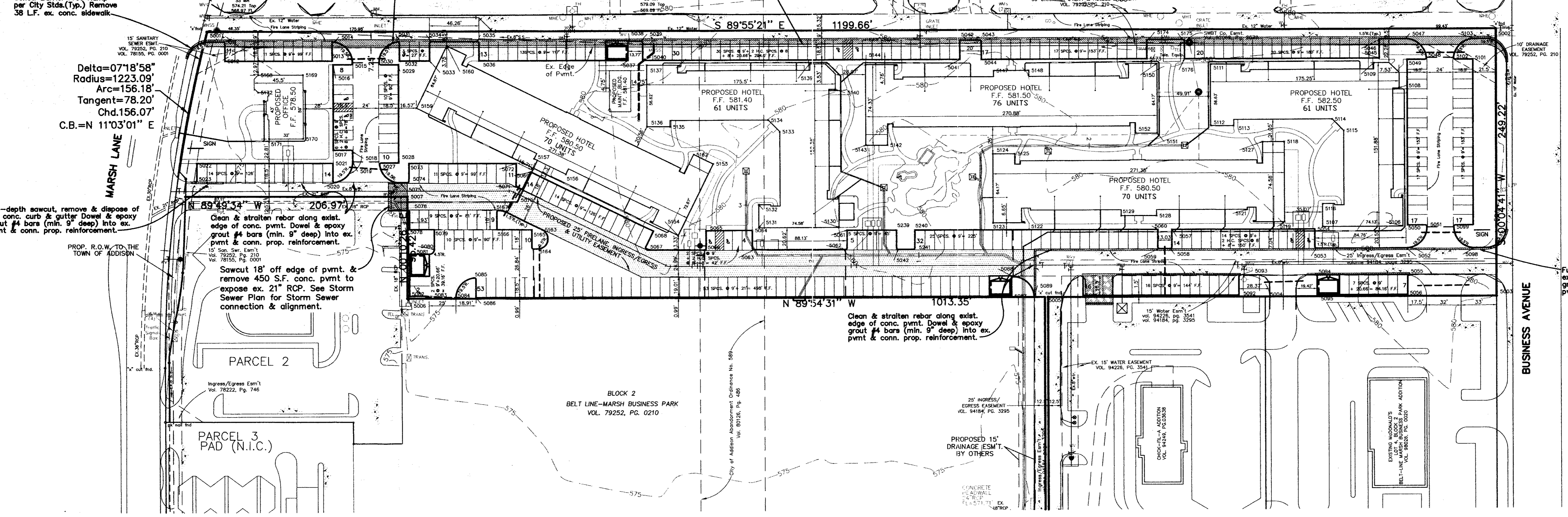
PROF. R.O.W. TO THE
TOWN OF ADDISON

Full-depth sawcut, remove & dispose
of ex. conc. pvtmt. Dowel & epoxy
grout #4 bars (min. 9" deep) into ex.
pvtmt & conn. prop. reinforcement.

Clean & straten rebar along exist.
edge of conc. pvtmt. Dowel & epoxy
grout #4 bars (min. 9" deep) into ex.
pvtmt & conn. prop. reinforcement.

Clean & straten rebar along exist.
edge of conc. pvtmt. Dowel & epoxy
grout #4 bars (min. 9" deep) into ex.
pvtmt & conn. prop. reinforcement.

Full-depth sawcut, remove & dispose of
ex. conc. curb & gutter. Dowel & epoxy
grout #4 bars (min. 9" deep) into ex.
pvtmt & conn. prop. reinforcement.



COORDINATE POINT LIST

NO.	NORTH	EAST	NO.	NORTH	EAST	NO.	NORTH	EAST	NO.	NORTH	EAST	NO.	NORTH	EAST
5011	4992.0994	3815.5542	5050	4817.3851	4917.2508	5087	4752.4893	4548.8029	5133	4907.1682	4333.7231	5238	4752.4893	4548.8029
5012	4974.0975	3817.0300	5051	4815.3775	4935.2481	5088	4770.4668	4550.3347	5134	4917.7331	4323.1583	5239	4814.6598	4441.9515
5013	4973.9624	3917.0299	5052	4795.8041	4915.7170	5089	4751.3752	4569.7899	5135	4911.9416	4231.8065	5240	4814.6327	4458.9515
5014	4991.8043	3918.7432	5053	4796.0369	4832.4540	5091	4752.8932	4615.2402	5136	4911.9417	4210.0565	5241	4796.6351	4457.4228
5015	4972.4372	3935.7570	5054	4814.0393	4830.9827	5092	4752.6619	4760.2400	5137	4969.0667	4210.0566	5242	4796.6574	4443.4228
5016	4970.5237	3917.7544	5055	4770.3338	4919.0139	5093	4771.2107	4761.7690	5139	4969.8163	4361.9316			
5017	4891.5238	3917.6479	5056	4752.4116	4917.1652	5094	4770.9802	4831.5426	5140	4945.9412	4385.8066			
5018	4889.9995	3935.6459	5057	4814.2514	4697.9828	5095	4752.5451	4833.0194	5142	4894.1820	4433.8781			
5019	4880.5870	3935.6332	5058	4796.2538	4896.4541	5098	4795.8020	4979.7169	5143	4894.1820	4413.8781			
5020	4861.2899	3918.8952	5059	4796.2696	4686.4225	5099	4815.3286	4960.2480	5144	4988.5154	4413.8782			
5021	4879.0910	3917.2324	5060	4814.2722	4684.9512	5101	4971.3062	4978.4608	5147	4982.5150	4533.0241	5001	5001.6200	3800.3400
5022	4879.4765	3790.2330	5061	4814.7331	4395.9516	5102	4972.9782	4960.5583	5148	4962.5150	4565.6075	5002	5000.0000	5000.0000
5023	4862.2876	3788.6648	5062	4796.7356	4394.4229	5103	4990.5270	4979.9868	5150	4968.5146	4684.7533	5003	4750.7800	4999.6600
5027	4877.7606	3960.8123	5063	4796.8714	4309.2808	5106	4816.4831	4912.7866	5151	4904.34797	4684.7531	5004	4751.1200	4784.7300
5028	4879.4416	3978.6317	5064	4814.8737	4307.8195	5107	4816.4833	4838.4532	5152	4904.3480	4664.7533	5005	4751.4400	4582.7300
5029	4970.4415	3978.7544	5065	4814.9423	4264.8195	5108	4944.9831	4909.9119	5153	4877.4706	4271.8271	5006	4752.3963	3986.3113
5030	4972.4033	3960.7570	5066	4796.9447	4263.2908	5109	4968.3562	4896.5370	5156	4882.2606	4134.5357	5007	4847.8141	3986.6009
5031	4991.7592	3978.1164	5067	4797.9291	4209.4317	5110	4967.6086	4734.6620	5157	4882.8558	4104.8458			
5032	4973.8777	3979.7590	5068	4814.6459	4215.7273	5112	4910.9836	4734.6618	5159	4930.0342	3995.2742			
5033	4973.8399	4007.7590	5069	4870.6735	4101.7540	5113	4910.9835	4755.9118	5160	4988.0677	4023.8029			
5034	4991.8378	4009.2832	5070	4855.1815	4092.4670	5114	4916.5249	4847.5137	5162	4886.1798	4253.5439			
5035	4991.7794	4052.5446	5071	4856.9323	4088.9055	5115	4906.0636	4858.3285	5163	4816.5363	4112.1451			
5036	4973.7774	4054.0203	5072	4878.5713	4088.1288	5116	4837.7333	4838.4533	5164	4798.5108	4107.9252			
5037	4973.6423	4192.7659	5073	4878.8748	3988.1293	5118	4895.9755	4803.1360	5165	4816.5273	4102.5085			
5038	4991.5880	4194.2728	5074	4860.8794	3986.5746	5119	4821.1422	4803.1358	5166	4816.6262	4069.8407			
5039	4991.5735	4205.0446	5075	4860.8991	3980.0738	5121	4832.6839	4768.3859	5167	4834.6099	4071.5468			
5040	4973.5694	4206.5203	5076	4834.8780	3986.9957	5122	4821.1428	4861.2608	5168	4961.0832	3847.7890			
5041	4973.1731	4501.5201	5078	4816.8735	3988.4411	5123	4821.1429	4531.7608	5169	4961.0832	3889.7032			
5042	4991.1711	4503.0443	5079	4816.8035	4011.5070	5124	4885.8095	4531.7610	5170	4902.0832	3857.7032			
5043	4991.1481	4520.0443	5080	4798.3036	4011.4507	5125	4885.8095	4552.2610	5171	4902.0832	3857.7032			
5044	4973.1448	4521.5201	5081	4793.8734	3998.4372	5127	4895.9755	4782.6360	5172	4945.0832	3847.7890			
5045	4972.6465	4891.5197	5082	4754.7053	3998.3163	5128	4827.1425	4683.9900	5173	4972.9381	4675.5199			
5046	4990.6444	4893.0440	5083	4752.3356	4006.3112	5129	4827.1426	4650.9067	5174	4990.9354	4677.5442			
5047	4990.6134	4915.9869	5084	4752.3428	4031.3114	5130	4817.6912	4388.4312	5175	4990.8936	4708.5442			
5048	4973.0273	4935.3664	5085	4771.6568	4048.5916	5131	4817.4414	4313.8479	5176	4972.8909	4710.5199			
5049	4971.3851	4917.4609	5086	4753.2845	4050.2355	5132	4839.1914	4313.8480						

- NOTES: 1. ALL POINTS AND DIMENSIONS ARE TO BACK OF CURB UNLESS OTHERWISE SPECIFIED.
2. SEE SHEET PAVING DETAILS FOR TYPICAL SAWED DUMMY JOINT LAYOUT. SAWED JOINTS TO BE A MAXIMUM 18' SPACING

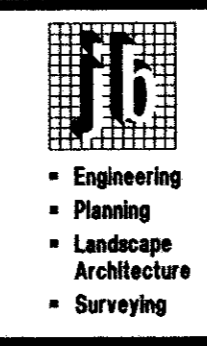
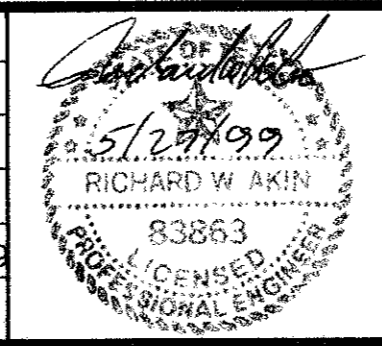
PAVING LEGEND

- 6" - 3500 P.S.I. concrete pavement reinforced with #3 bars @ 18" O.C.B.W. on a 6" compacted subgrade to 95% Std. Proctor Density per ASTM D698 at -1 to +3% optimum moisture content.
- All other onsite pavement
- 5" - 3500 P.S.I. concrete pavement reinforced with #3 bars @ 18" O.C.B.W. on a 6" compacted subgrade to 95% Std. Proctor Density per ASTM D698 at -1 to +3% optimum moisture content.
- Existing concrete pavement
- 4" - 3000 P.S.I. concrete sidewalk reinforced with #3 bars @ 24" O.C.B.W. on a 6" compacted subgrade to 95% standard proctor density.
- Prop. Curb
- Expansion joint or Construction joint
- 4" Sch. 40 PVC Irrigation sleeves, Max 24" Below top of Pavement. Turn up and cap ends at finish grade.
- P.P. Power pole
- Guy Guy anchor

THIS DRAWING IS THE PROPERTY OF JONES & BOYD, INC. IT IS NOT TO BE REPRODUCED OR COPIED IN ANY MANNER WITHOUT THE WRITTEN CONSENT OF JONES & BOYD, INC. DATE: 2/11/00

- BENCHMARK:
- SQUARE CUT ON TOP OF CURB INLET AT NORTHEAST CORNER OF INTERSECTION OF BUSINESS AVE. AND BELTLINE ROAD. ELEVATION = 577.59'
 - "X" AT INLET ON TOP OF CURB WEST SIDE OF BUSINESS AVE. 200' +/- NORTH OF BELTLINE ROAD. ELEVATION = 578.57'

NO.	REVISIONS DURING CONSTRUCTION	BY	DATE	NO.	REVISIONS DURING PLAN REVIEW	BY	DATE
				1	ADDED MAINTENANCE BLDG & COORDINATES	RWA5/25/99	



Jones & Boyd, Inc.
16800 Dallas Parkway, Suite 240
Dallas, Texas 75248
Tel: 972-248-7676
Fax: 972-248-1414

PAVING & DIMENSION CONTROL PLAN
SUITES OF AMERICA
TOWN OF ADDISON,
DALLAS COUNTY, TEXAS

PROJECT NO. BG403
SHEET NO. C1