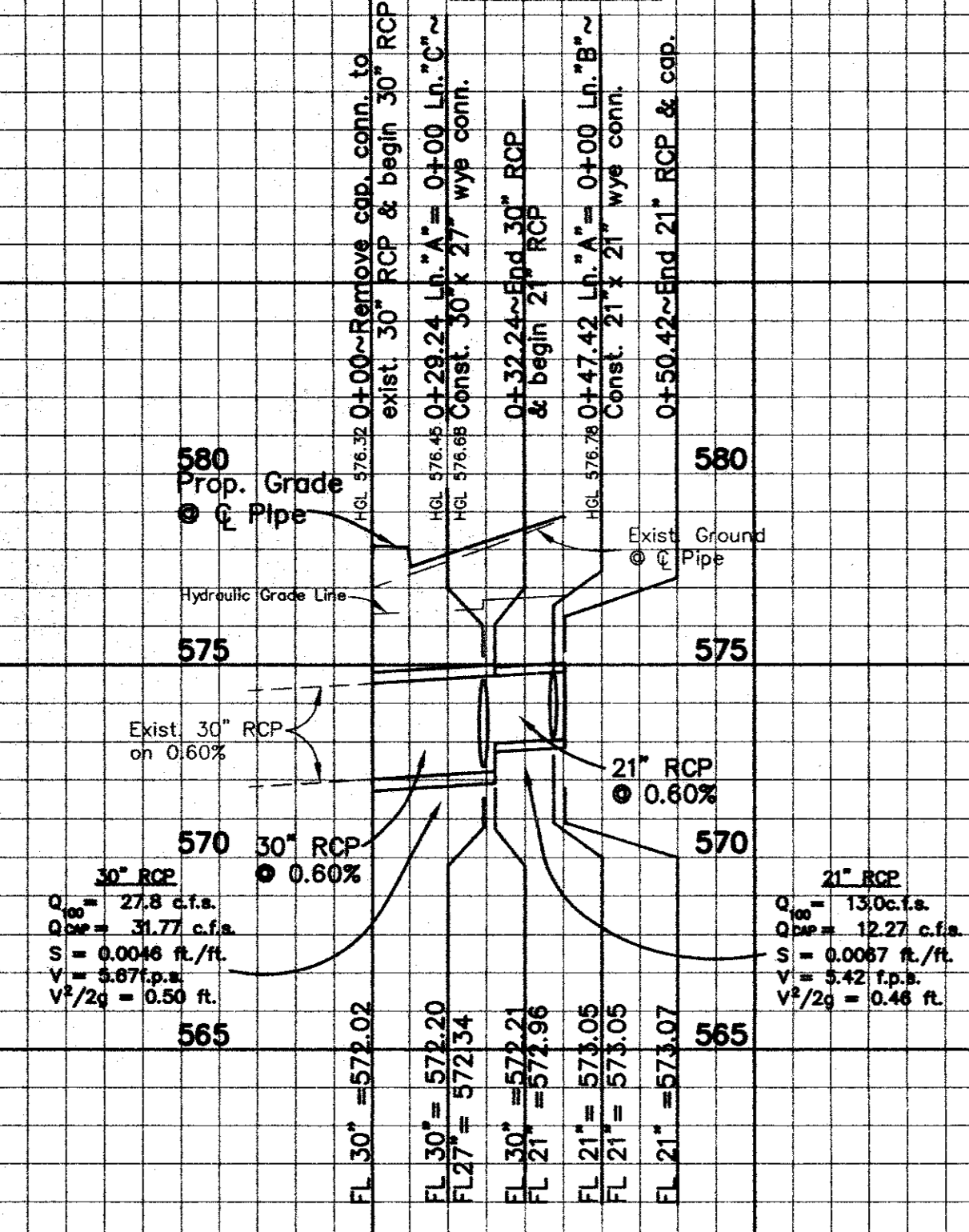
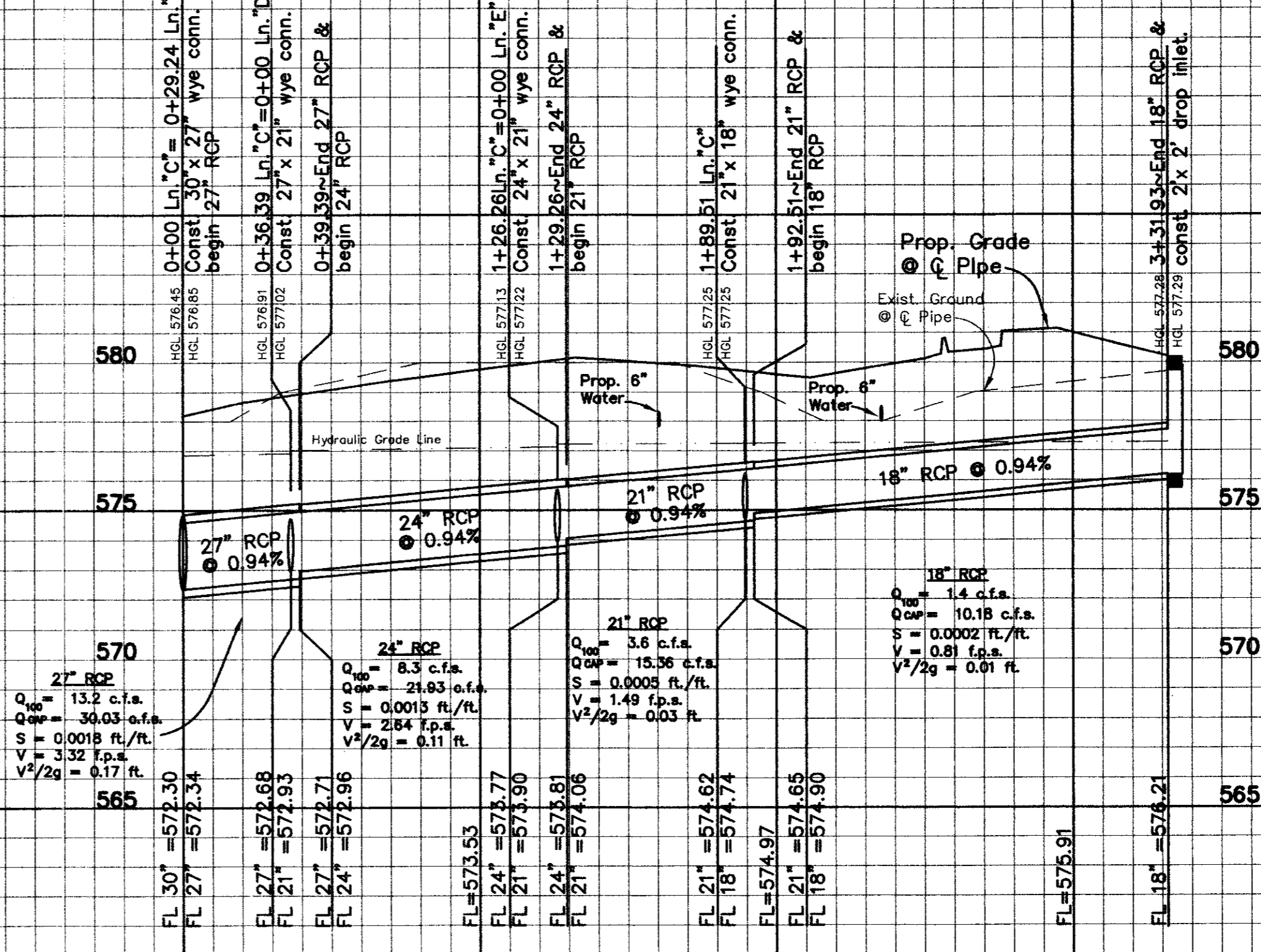


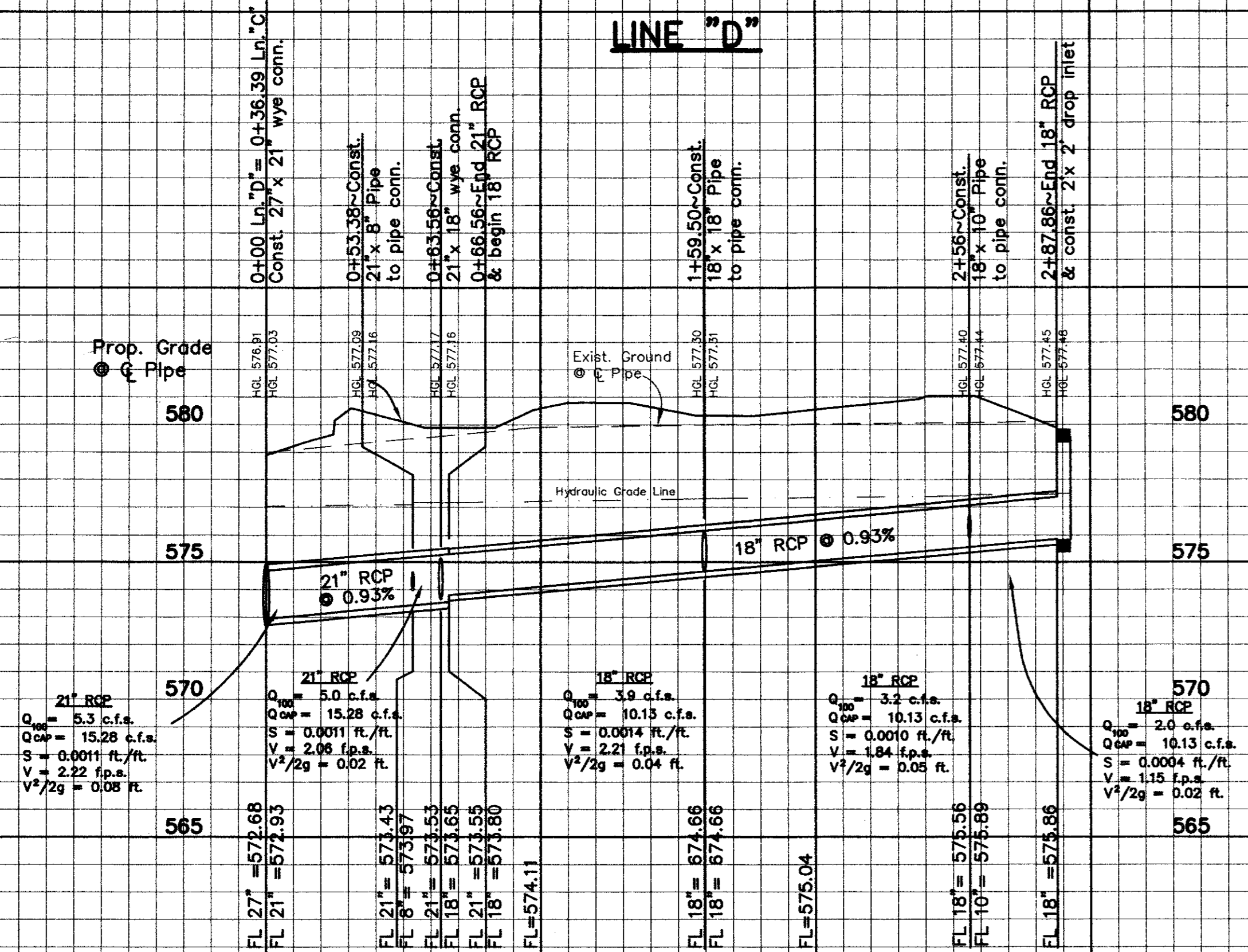
0+00 LINE "A" 1+00



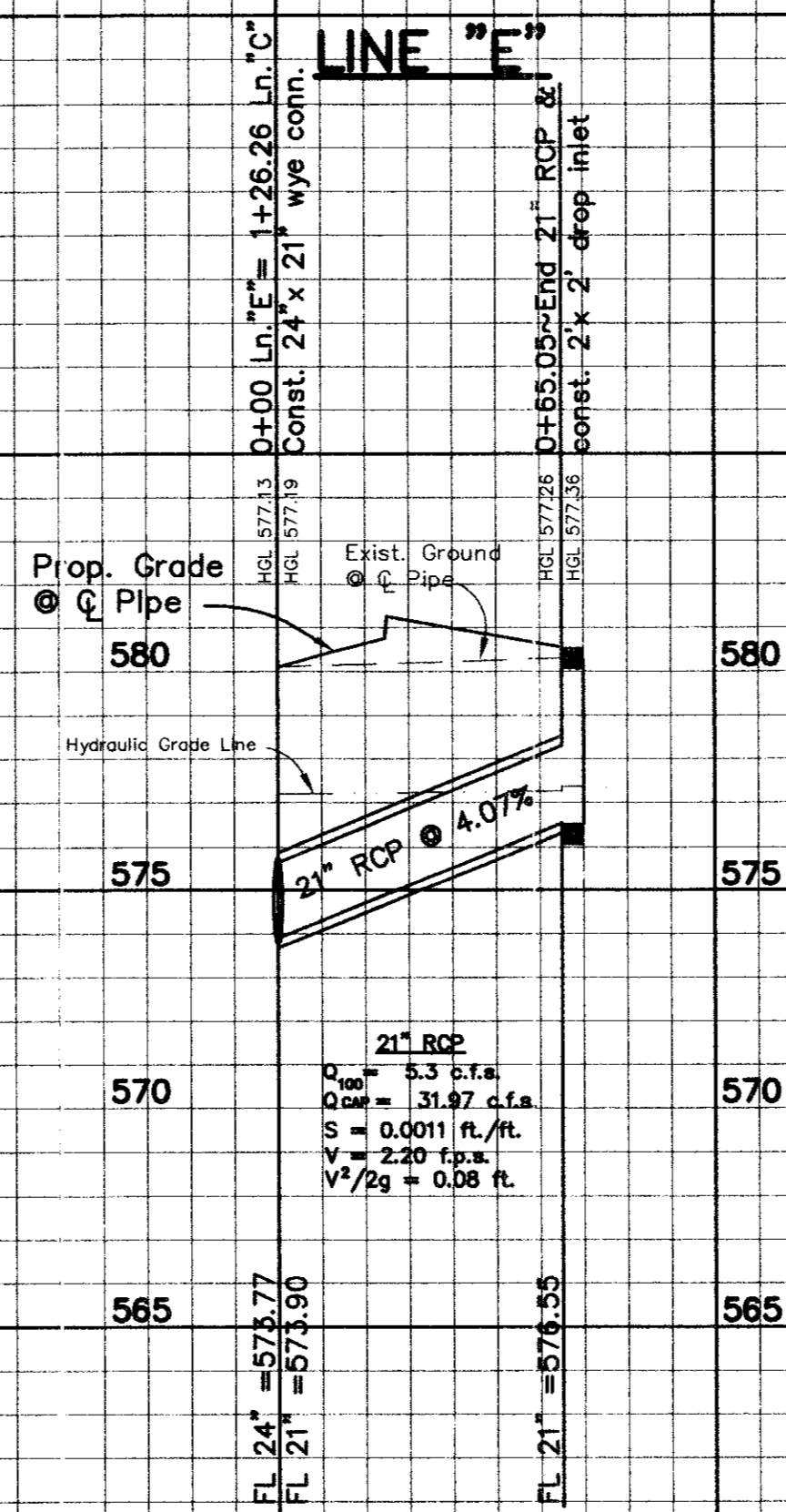
0+00 LINE "C" 1+00 2+00 3+00



0+00 LINE "D" 1+00 2+00 3+00



0+00 LINE "E" 1+00

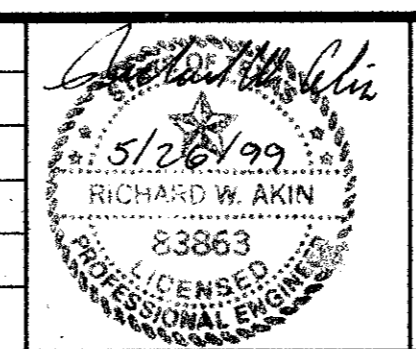


RECORD DRAWING  
 THIS DRAWING HAS BEEN REVIEWED  
 TO INSURE THAT THE DESIGN IS  
 CONFORMANT WITH THE CITY OF  
 ADDISON, TEXAS, SPECIFICATIONS  
 CONTAINED IN THE YARDBOOK OF THE  
 CITY OF ADDISON, TEXAS, SHOWN ON  
 THIS DRAWING. ENGINEER'S SIGNATURE  
 MUST BE FILED WITH THIS DRAWING.  
 JONES & BOYD, INC.  
 BY: [Signature]  
 DATE: 2/11/02

NOTE:  
 PVC PIPE OF CLASS 150 OR BETTER MAY BE USED IN PLACE OF RCP  
 FOR STORM SEWER.

- BENCHMARK :
- SQUARE CUT ON TOP OF CURB INLET AT NORTHEAST CORNER OF INTERSECTION OF BUSINESS AVE. AND BELTLINE ROAD. ELEVATION = 577.59'
  - "X" AT INLET ON TOP OF CURB WEST SIDE OF BUSINESS AVE. 200' +/- NORTH OF BELTLINE ROAD. ELEVATION = 578.57'

NO.	REVISIONS DURING CONSTRUCTION	BY	DATE	NO.	REVISIONS DURING PLAN REVIEW	BY	DATE



**Jones & Boyd, Inc.**  
 16800 Dallas Parkway, Suite 240  
 Dallas, Texas 75248  
 Tel: 972-248-7676  
 Fax: 972-248-1414

- Engineering
- Planning
- Landscape Architecture
- Surveying

**STORM SEWER PROFILES**

SUITES OF AMERICA

TOWN OF ADDISON,  
 DALLAS COUNTY, TEXAS

PROJECT NO.	BG403
SHEET NO.	C6