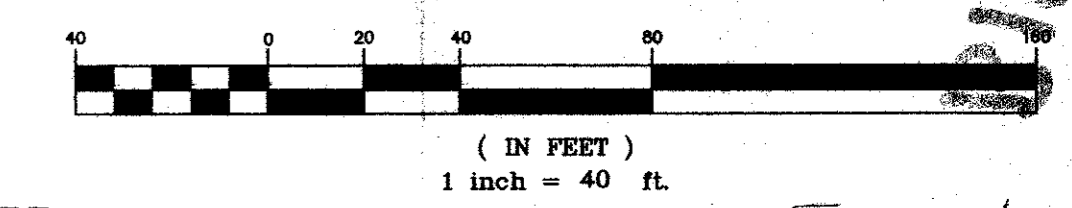
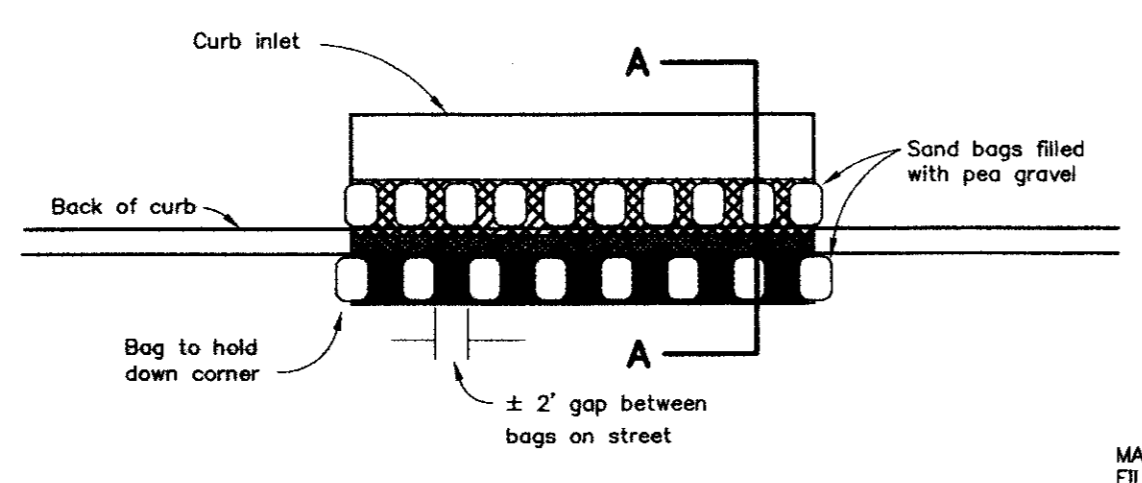
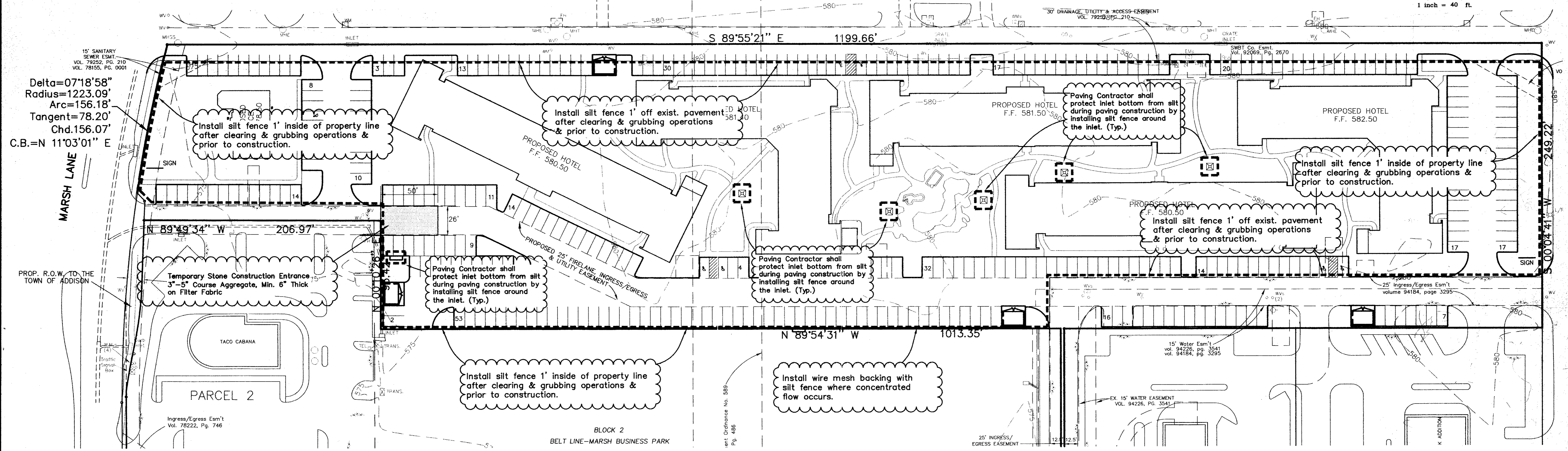


BLOCK 2
BELT LINE-MARSH BUSINESS PARK
VOL. 79252, PG. 0210

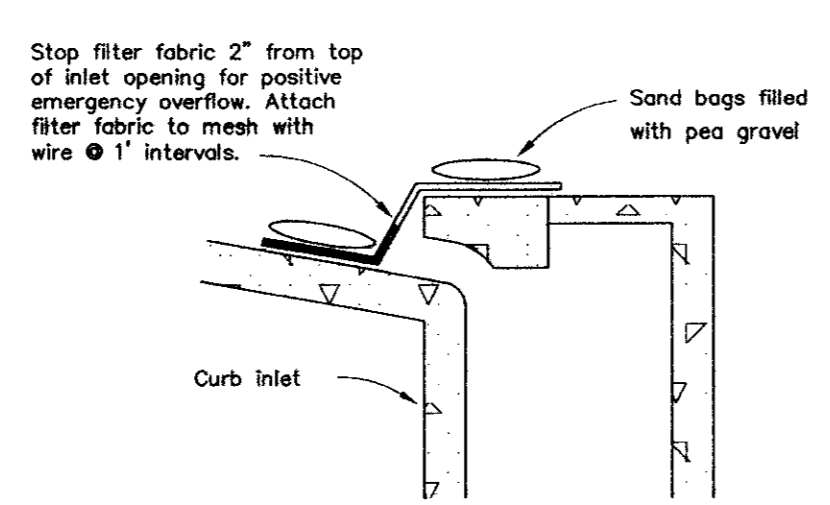
GRAPHIC SCALE



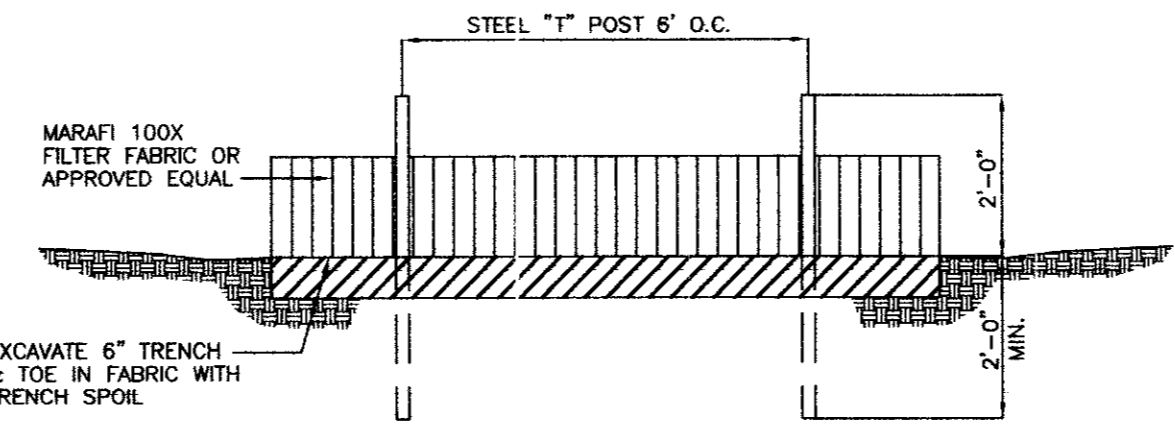
Delta=07°18'58"
Radius=1223.09'
Arc=156.18'
Tangent=78.20'
Chd.156.07'
C.B.=N 11°03'01" E



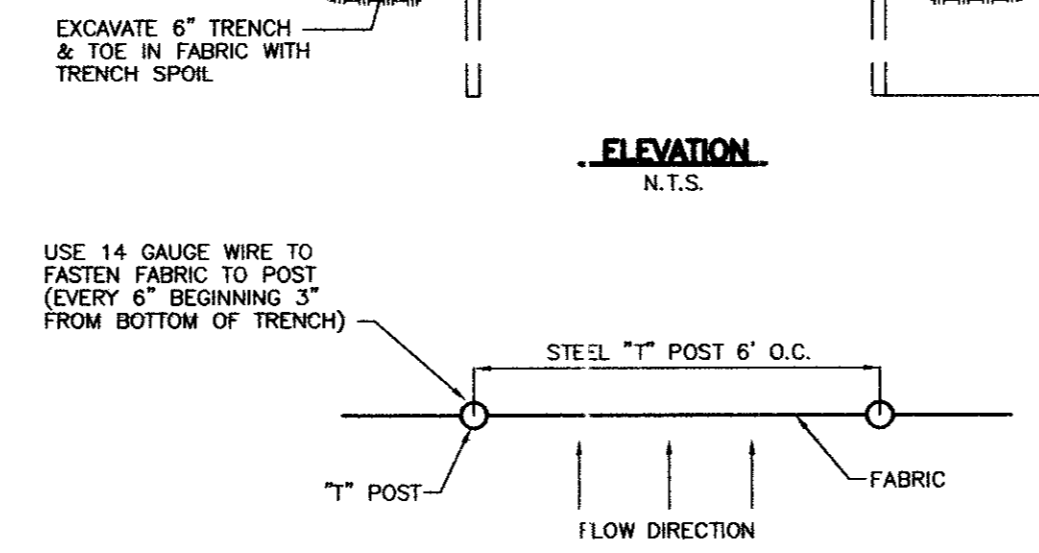
INLET EROSION PROTECTION
PLAN VIEW
N.T.S.



SECTION A-A
N.T.S.

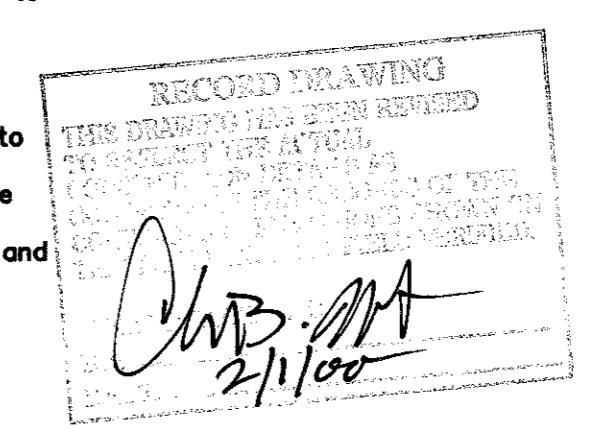


ELEVATION
N.T.S.



PLAN VIEW SILT FENCE DETAIL
N.T.S.

- SILT FENCE GENERAL NOTES:**
- Steel posts which support the silt fence shall be installed on a slight angle toward the anticipated runoff source.
 - The toe of the silt fence shall be trenched in with a spade or mechanical trencher, so that the downslope face of the trench is flat and perpendicular to the line of flow.
 - The trench should be a minimum of six inches deep and four inches wide to allow for the silt fence to be laid in the ground and backfilled.
 - Silt fence should be securely fastened to each support post.
 - Inspection shall be frequent and repair or replacement shall be made promptly as needed.
 - Silt fence shall be removed when it has served its usefulness, so as not to block or impede storm flow or drainage.
 - Sediment trapped by this practice shall be disposed of in an approved site in a manner that will not contribute to additional siltation.
 - Accumulated silt shall be removed when it reaches a depth of six inches and disposed of in an approved spoil site or as in No. 7 above.
 - At point of surface flow concentration reinforce silt fence with wire mesh backing on downstream side of fence.
 - Filter fabric is to be Marafi 100X or approved equal. (Marafi, Inc.: 800-438-1855)

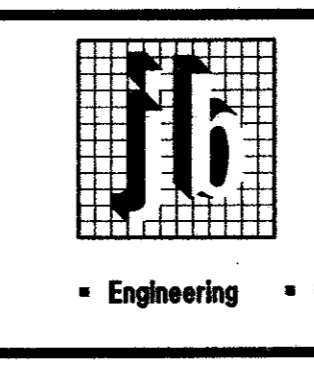
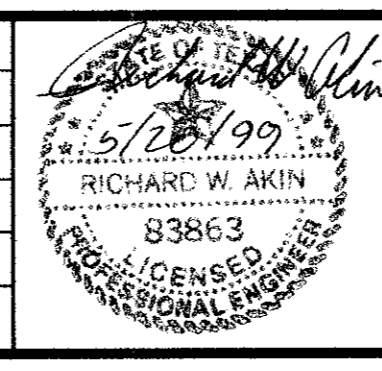


LEGEND

- Silt Fence
- Inlet w/ Erosion protection

- BENCHMARK :**
- SQUARE CUT ON TOP OF CURB INLET AT NORTHEAST CORNER OF INTERSECTION OF BUSINESS AVE. AND BELTLINE ROAD. ELEVATION = 577.59'
 - "X" AT INLET ON TOP OF CURB WEST SIDE OF BUSINESS AVE. 200' +/- NORTH OF BELTLINE ROAD. ELEVATION = 578.57'

NO.	REVISIONS DURING CONSTRUCTION	BY	DATE	NO.	REVISIONS DURING PLAN REVIEW	BY	DATE



Jones & Boyd, Inc.
18000 Dallas Parkway, Suite 240
Dallas, Texas 75248
Tel: 972-248-7878
Fax: 972-248-1414

• Engineering • Planning • Landscape Architecture • Surveying

EROSION CONTROL PLAN

SUITES OF AMERICA

CITY OF ADDISON,
DALLAS COUNTY, TEXAS

PROJECT NO.
BG403

SHEET NO.
C8