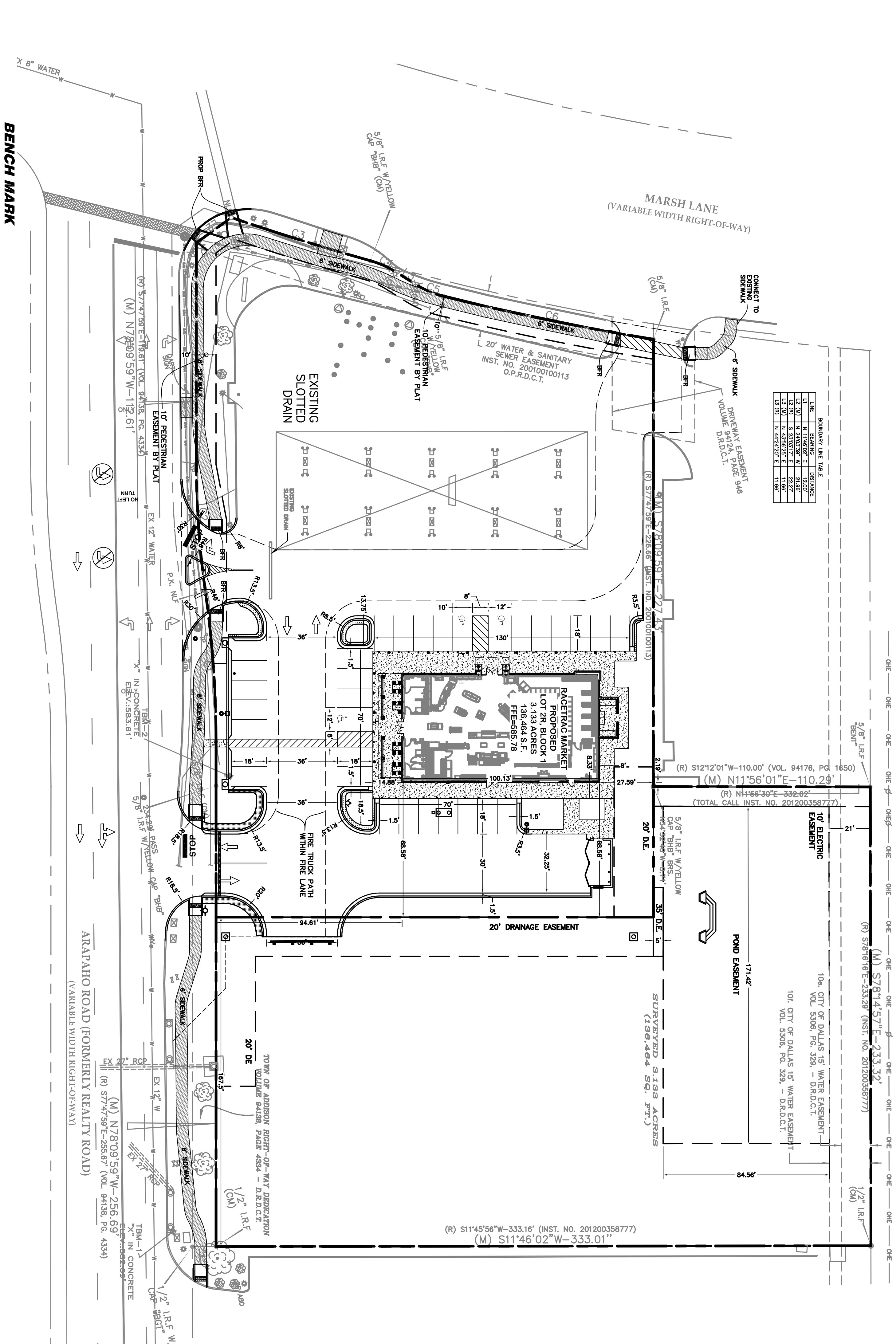


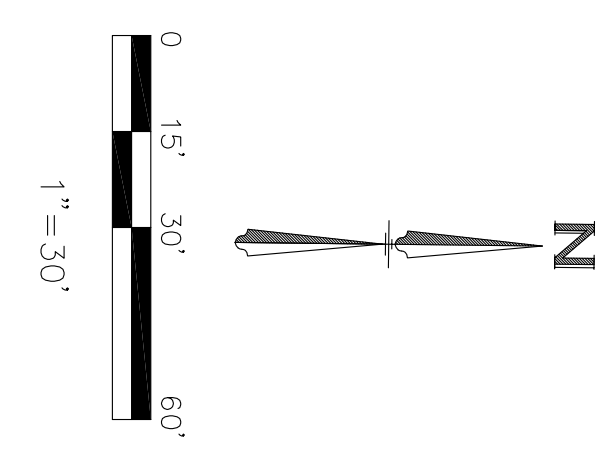
BOUNDARY CURVE TABLE	
CURVE 1	DELTA 1 RADIUS LENGTH
C1 (M)	876.22' 132.24' 76.27'
CURVE 2	DELTA 2 RADIUS LENGTH
C2 (M)	876.22' 132.24' 76.27'
CURVE 3	DELTA 3 RADIUS LENGTH
C3 (M)	876.22' 132.24' 76.27'
CURVE 4	DELTA 4 RADIUS LENGTH
C4 (M)	876.22' 132.24' 76.27'
CURVE 5	DELTA 5 RADIUS LENGTH
C5 (M)	876.22' 132.24' 76.27'
CURVE 6	DELTA 6 RADIUS LENGTH
C6 (M)	876.22' 132.24' 76.27'
CURVE 7	DELTA 7 RADIUS LENGTH
C7 (M)	876.22' 132.24' 76.27'
CURVE 8	DELTA 8 RADIUS LENGTH
C8 (M)	876.22' 132.24' 76.27'
CURVE 9	DELTA 9 RADIUS LENGTH
C9 (M)	876.22' 132.24' 76.27'
CURVE 10	DELTA 10 RADIUS LENGTH
C10 (M)	876.22' 132.24' 76.27'

ST. LOUIS & SOUTHWESTERN RAILROAD  
(100' RIGHT-OF-WAY)



LINE BOUNDARY TABLE	
LINE	BOUNDARY BEARING
L1	N 114°02' E 232.00'
L2	N 24°03'30" E 21.86'
L3	N 42°32' E 17.22'
L4	N 42°32' E 17.88'

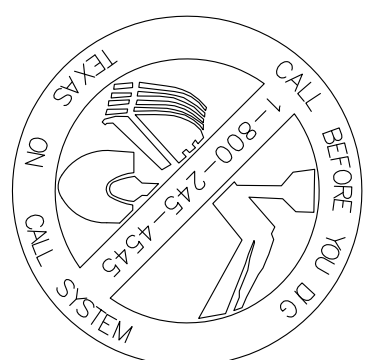
SEE ARCHITECTURAL PLANS FOR EXACT BUILDING DIMENSIONS. ANY DIFFERENCES SHALL BE REPORTED TO CIVIL ENGINEER PRIOR TO BUILDING LAYOUT.



SITE LEGEND (PROPOSED):

- PROPERTY LINE
- PROPOSED PARKING STALLS
- BUILDING CORNER
- NEW FIRE LANE (PER LOCAL CODES)
- FIRE TRUCK PATH
- ELECTRIC TRANSFORMER PAD (PER LOCAL CODES)
- SIGNAGE
- PAINTED SOUND TRAFFIC FLOW ARROWS
- NEW CURB AND GUTTER
- STOP BAR
- STOP

SEE ARCHITECTURAL PLANS FOR EXACT BUILDING DIMENSIONS. ANY DIFFERENCES SHALL BE REPORTED TO CIVIL ENGINEER PRIOR TO BUILDING LAYOUT.

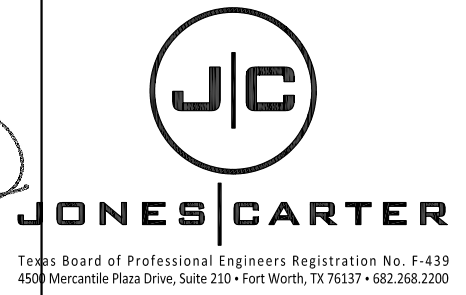


TEXAS EXCAVATION SAFETY SERVICES  
1-800-344-8377

AS-BUILTS

Travis J. Bousquet, PE  
Date May 22, 20

NO.	DESCRIPTION	DATE
8	As-Builts to City	05/22/20
7	Modification to sidewalk along Arapaho	04/16/20
6	Additional Spot elevations to GC	11/07/19
5	REVISED PLANS TO TOWN	08/23/2019
4	TOWN SUBMITTAL	04/05/2019
3	TOWN SUBMITTAL	08/30/2018
2	TOWN SUBMITTAL	08/28/2018
1	TOWN SUBMITTAL	02/12/2018



THESE PLANS ARE SUBJECT TO FEDERAL COPYRIGHT LAWS: ANY USE OF SAME WITHOUT THE EXPRESSED WRITTEN PERMISSION OF RACETRAC PETROLEUM, INC. IS PROHIBITED.

**RaceTrac**  
RACETRAC PETROLEUM, INC.  
3225 CUMBERLAND BOULEVARD  
SUITE 100 ATLANTA, GA 30339  
(770) 431-7600

**HORIZONTAL CONTROL**  
**RACETRAC**  
Beltline/Marsh Business Park  
Lot 2, Block 1  
3.133 Ac. - Zoned: Light Retail  
Addison, Texas

DATE: May 22, 20  
SCALE: 1"=30'  
DRAWN BY: TJB

**C-1.3**  
SHEET NO. VERSION

BENCHMARK NO. 1 - "X" CUT IN CONCRETE STORM INLET ON NORTH SIDE OF ARAPAHO ROAD APPROXIMATELY 575' EAST OF THE CENTERLINE INTERSECTION OF ARAPAHO ROAD AND MARSH LANE.  
ELEV.: 582.69'

BENCHMARK NO. 2 - "X" CUT IN CONCRETE GRATE INLET APPROXIMATELY 360' EAST OF THE CENTERLINE INTERSECTION OF ARAPAHO ROAD AND MARSH LANE.  
ELEV.: 583.61'

ELEVATIONS ARE NAVD88 BASED ON GPS OBSERVATIONS.