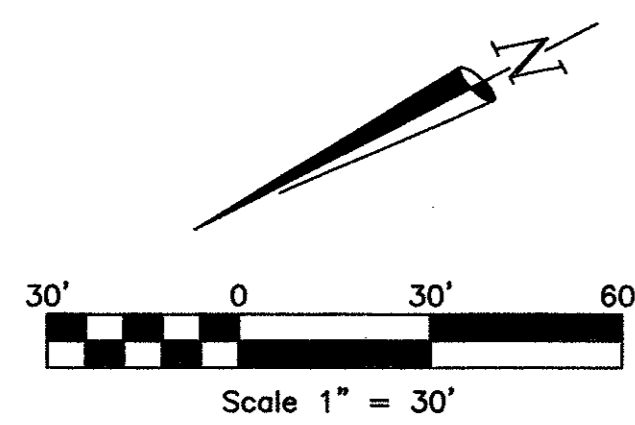


DRAWING FILE: E:\2002.000.000\2002.015.000.dwg EROSION CONTROL PLAN.DWG

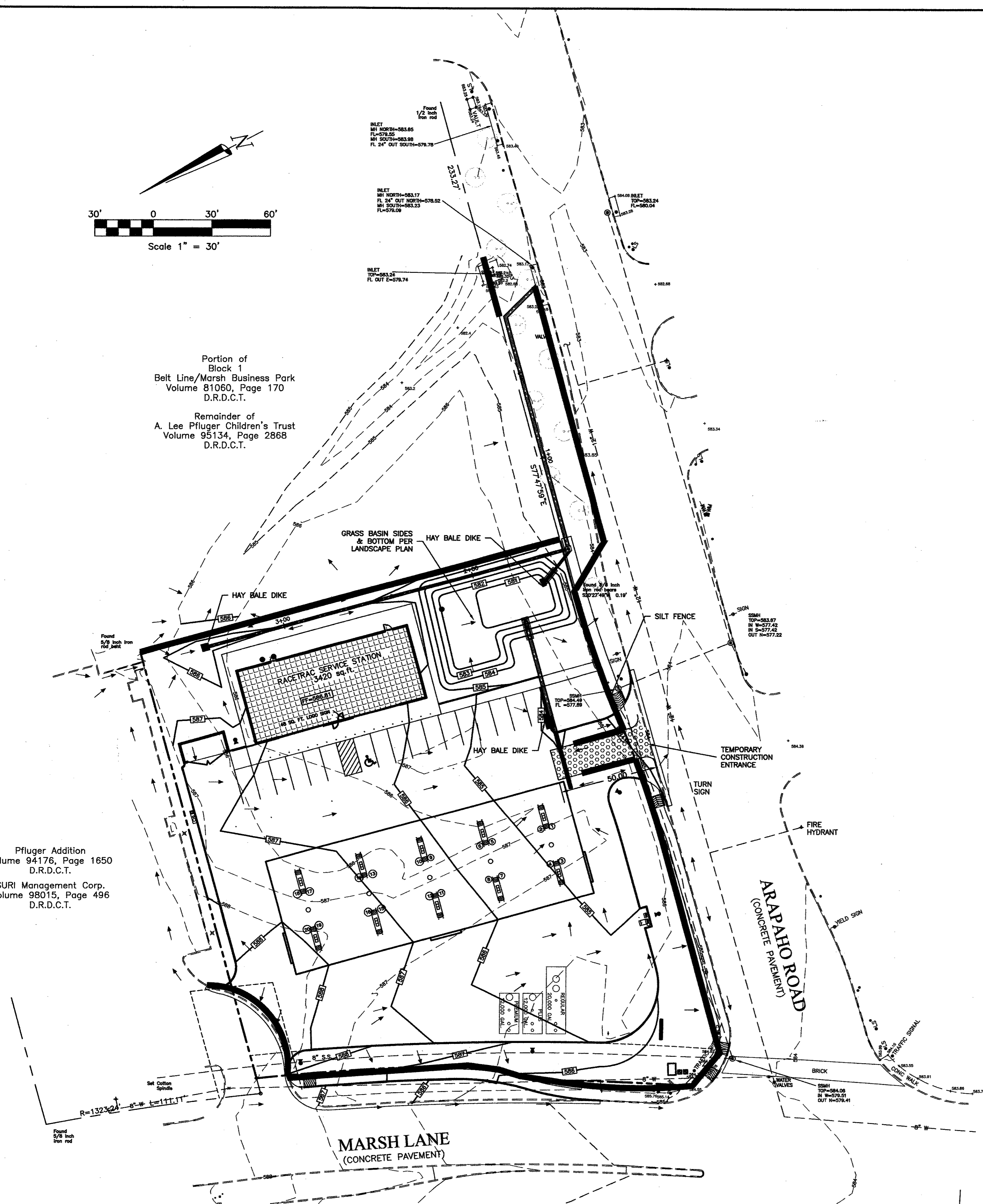


Portion of Block 1
Belt Line/Marsh Business Park
Volume 81060, Page 170
D.R.D.C.T.

Remainder of
A. Lee Pfluger Children's Trust
Volume 95134, Page 2868
D.R.D.C.T.

Pfluger Addition
Volume 94176, Page 1650
D.R.D.C.T.

SURI Management Corp.
Volume 98015, Page 496
D.R.D.C.T.



EROSION CONTROL NOTES

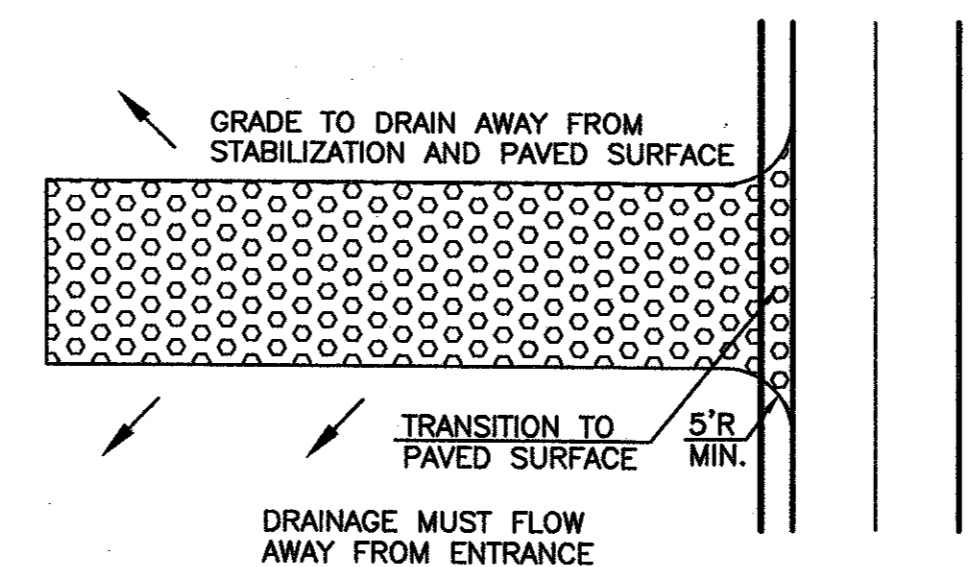
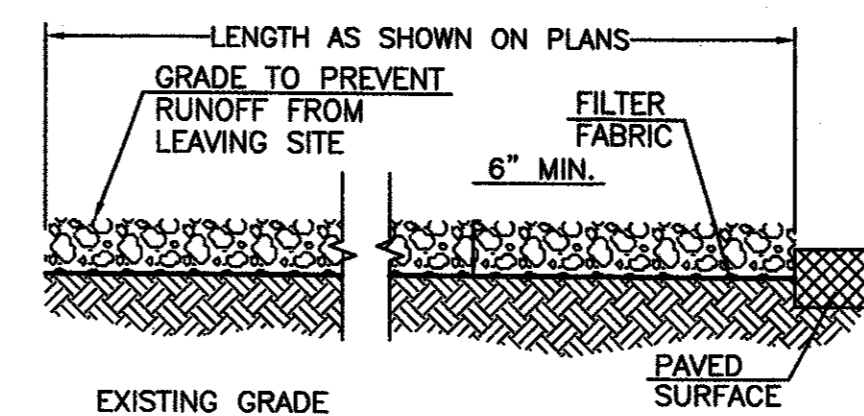
EROSION CONTROL DEVICES AS SHOWN ON THE EROSION CONTROL PLAN FOR THE PROJECT SHALL BE INSTALLED PRIOR TO THE START OF LAND DISTURBING ACTIVITIES ON THE PROJECT.

ALL EROSION CONTROL DEVICES ARE TO BE INSTALLED IN ACCORDANCE WITH THE APPROVED PLANS AND SPECIFICATIONS FOR THE PROJECT. CHANGES ARE TO BE APPROVED BEFORE CONSTRUCTION BY THE DESIGN ENGINEER AND THE TOWN OF FLOWER MOUND ENGINEERING DEPT.

IF THE EROSION CONTROL PLAN AS APPROVED CANNOT CONTROL EROSION AND OFF-SITE SEDIMENTATION FROM THE PROJECT, THE EROSION CONTROL PLAN WILL BE REQUIRED TO BE REVISED AND/OR ADDITIONAL EROSION CONTROL DEVICES WILL BE REQUIRED ON SITE.

CONTRACTOR SHALL IMPLEMENT AND MAINTAIN EROSION AND SEDIMENTATION CONTROL MEASURES THROUGHOUT THE CONSTRUCTION PERIOD.

SEDIMENT THAT IS ERODED FROM THE SITE AND DEPOSITED INTO ADJACENT PROPERTIES OR PUBLIC RIGHT-OF-WAY SHALL BE REMOVED BY THE CONTRACTOR AND DISPOSED OF IN AN APPROPRIATE MANNER.



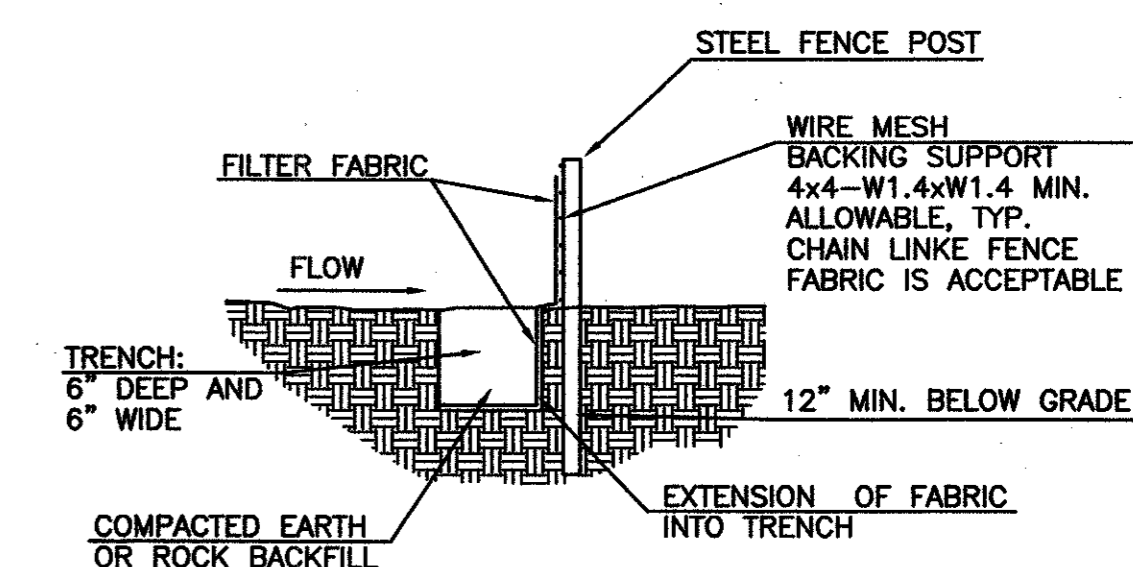
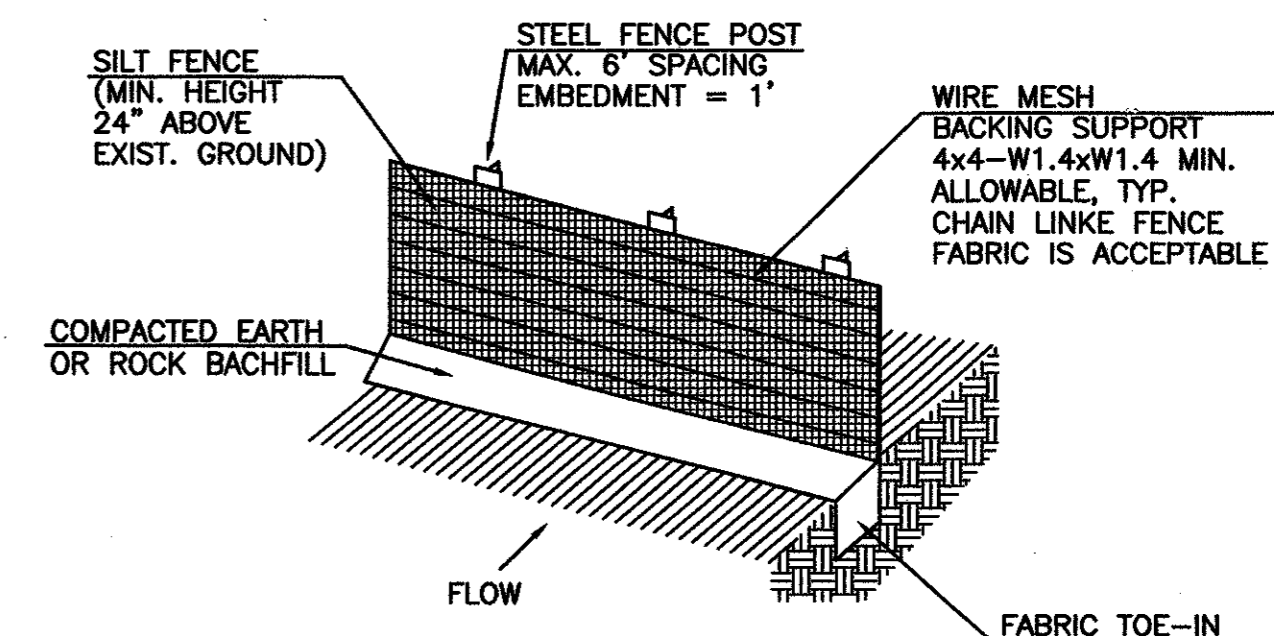
STABILIZED CONSTRUCTION ENTRANCE
N.T.S.

STABILIZED CONSTRUCTION ENTRANCE GENERAL NOTES:

1. STONE SHALL BE 3 TO 5 INCH DIAMETER CRUSHED ROCK OR ACCEPTABLE CRUSHED PORTLAND CEMENT CONCRETE.
2. THE THICKNESS SHALL NOT BE LESS THAN 6 INCHES.
3. THE WIDTH SHALL BE NO LESS THAN THE WIDTH OF ALL POINTS OF INGRESS OR EGRESS.
4. WHEN NECESSARY, VEHICLES SHALL BE CLEANED TO REMOVE SEDIMENT PRIOR TO ENTRANCE ONTO A PUBLIC ROADWAY. WHEN WASHING IS REQUIRED, IT SHALL BE DONE ON AN AREA STABILIZED WITH CRUSHED STONE WITH DRAINAGE FLOWING AWAY FROM BOTH STREET AND THE STABILIZED ENTRANCE. ALL SEDIMENT SHALL BE PREVENTED FROM ENTERING ANY STORM DRAIN, DITCH OR WATERCOURSE USING APPROVED METHODS.
5. THE ENTRANCE SHALL BE MAINTAINED IN A CONDITION WHICH WILL PREVENT TRACKING OR FLOWING OF SEDIMENT ONTO PAVED SURFACES THIS MAY REQUIRE PERIODIC TOP DRESSING WITH ADDITIONAL STONE AS CONDITIONS DEMAND. ALL SEDIMENT SPILLED, DROPPED, WASHED, OR TRACKED ONTO PAVED SURFACES MUST BE REMOVED IMMEDIATELY.
6. THE ENTRANCE MUST BE PROPERLY GRADED OR INCORPORATE A DRAINAGE SWALE TO PREVENT RUNOFF FROM LEAVING THE CONSTRUCTION SITE.

HAY BALE DIKE GENERAL NOTES

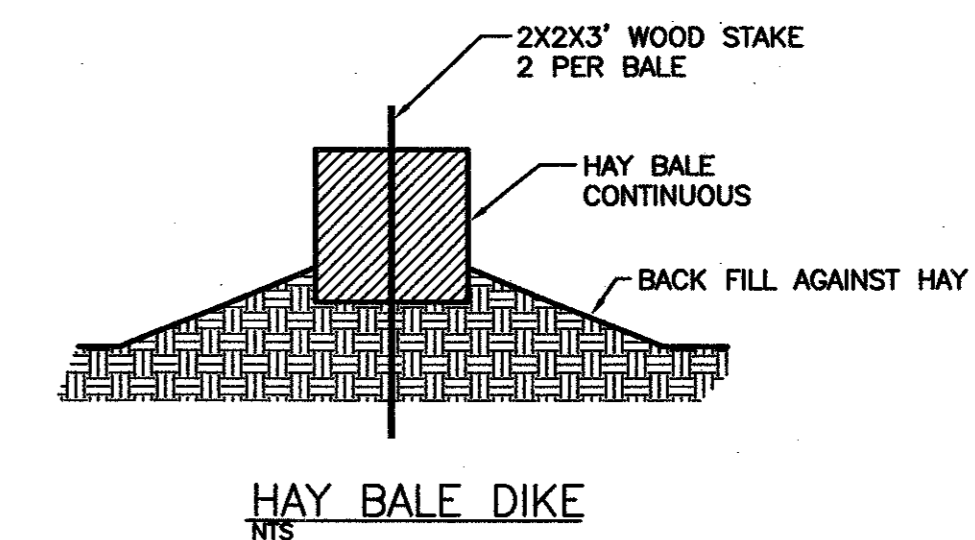
1. EACH BALE SHALL BE EMBEDDED IN THE SOIL A MINIMUM OF FOUR INCHES.
2. BALES SHALL BE SECURELY ANCHORED IN PLACE BY 2" X 2" WOOD STAKES DRIVEN THROUGH THE BALES. THE FIRST STAKE IN EACH BALE SHALL BE ANGLED TOWARD THE PREVIOUSLY LAID BALE TO FORCE THE BALES TOGETHER.
3. INSPECTION SHALL BE MADE WEEKLY AND REPAIR OR REPLACEMENT SHALL BE MADE PROMPTLY AS NEEDED BY THE CONTRACTOR.
4. WHEN SILT REACHES A DEPTH OF 6 INCHES, IT SHALL BE REMOVED AND DISPOSED OF IN AN APPROVED MANNER.
5. AFTER THE DEVELOPMENT OF THE SITE IS COMPLETELY STABILIZED, THE BALES SHALL BE REMOVED AND DISPOSED OF AT AN APPROVED SPOIL DISPOSAL SITE.



SILT FENCE
N.T.S.

SILT FENCE GENERAL NOTES:

1. STEEL POSTS WHICH SUPPORT THE SILT FENCE SHALL BE INSTALLED ON A SLIGHT ANGLE TOWARD THE ANTICIPATED RUNOFF SOURCE. POST MUST BE EMBEDDED A MINIMUM OF ONE FOOT.
2. THE TOE OF THE SILT FENCE SHALL BE TRENCHED IN WITH A SPADE OR MECHANICAL TRENCHER, SO THAT THE DOWNSLOPE FACE OF THE TRENCH IS FLAT AND PERPENDICULAR TO THE LINE OF FLOW. WHERE FENCE CANNOT BE TRENCHED IN (e.g. PAVEMENT), WEIGHT FABRIC FLAP WITH ROCK ON UPHILL SIDE TO PREVENT FLOW FROM SEEPING UNDER FENCE.
3. THE TRENCH MUST BE A MINIMUM OF 6 INCHES DEEP AND 6 INCHES WIDE TO ALLOW FOR THE SILT FENCE FABRIC TO BE LAID IN THE GROUND AND BACKFILLED WITH COMPACTED MATERIAL.
4. SILT FENCE SHOULD BE SECURELY FASTENED TO EACH STEEL SUPPORT POST OR TO WOVEN WIRE, WHICH IN TURN IS ATTACHED TO THE STEEL FENCE POST. THERE SHALL BE A 3 FOOT OVERLAP, SECURELY FASTENED WHERE ENDS OF FABRIC MEET.
5. INSPECTION SHALL BE MADE EVERY TWO WEEKS AND AFTER EACH 1/2" RAINFALL. REPAIR OR REPLACEMENT SHALL BE MADE PROMPTLY AS NEEDED.
6. SILT FENCE SHALL BE REMOVED WHEN THE SITE IS COMPLETELY STABILIZED SO AS NOT TO BLOCK OR IMPEDE STORM FLOW OR DRAINAGE.
7. ACCUMULATED SILT SHALL BE REMOVED WHEN IT REACHES A DEPTH OF HALF THE HEIGHT OF THE FENCE. THE SILT SHALL BE DISPOSED OF AT AN APPROVED SITE AND IN SUCH A MANNER AS NOT TO CONTRIBUTE TO ADDITIONAL SILTATION.



HAY BALE DIKE
N.T.S.

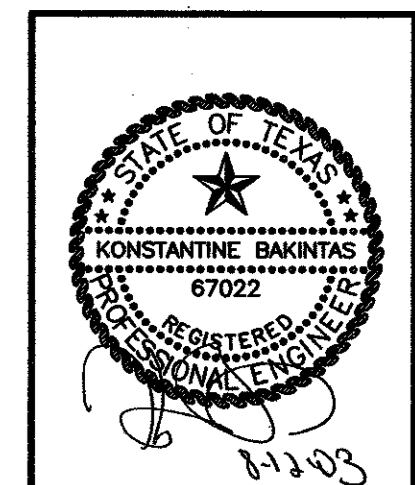
7	CHANGE GRADING & PRIVATE SD PER CLIENT	08/12/03	DATE	08/15/00
6	ADD 60' CANOPY PER CLIENT	07/17/03	DATE	
5	ADD NOTE-INSTALL GRASS IN BASIN	02/24/03	DATE	
4	REALLY DRIVE CHANGED TO ARAPAHO ROAD	02/03/03	DATE	
NO.	REVISIONS	CHECKED:	DAH	KB
DESIGNED:	DAH	DRAWN:	DAH	KB

EROSION CONTROL PLAN

RaceTrac Service Station #646

On-Site Improvements

Marsh Ln. & Arapaho Rd.
Addison, Texas



RaceTrac Petroleum, Inc.

300 Technology Ct.
Smyrna, GA 30082
Contact: Julie Diamond
(770) 431-7600 x1128

Baird Hampton & Brown, Inc.

Engineering & Surveying

309 W. 7th St., Ste. 500 Ft. Worth, TX 76102 Tel: (817) 338-2245 Fax: (817) 338-2246