

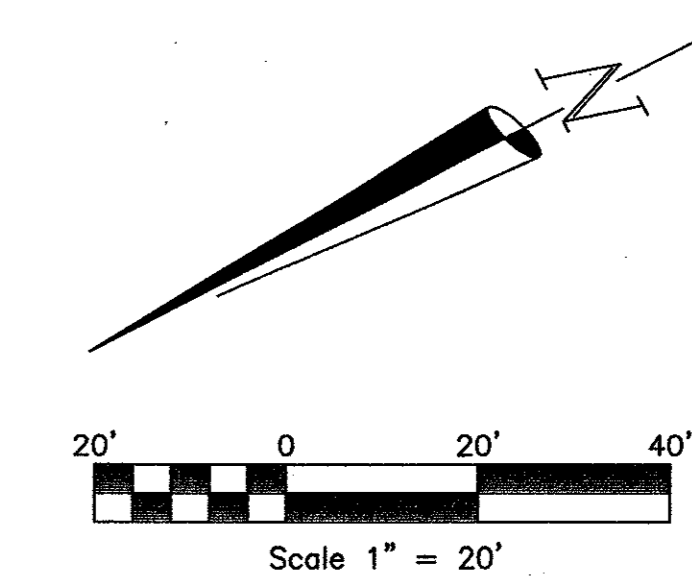
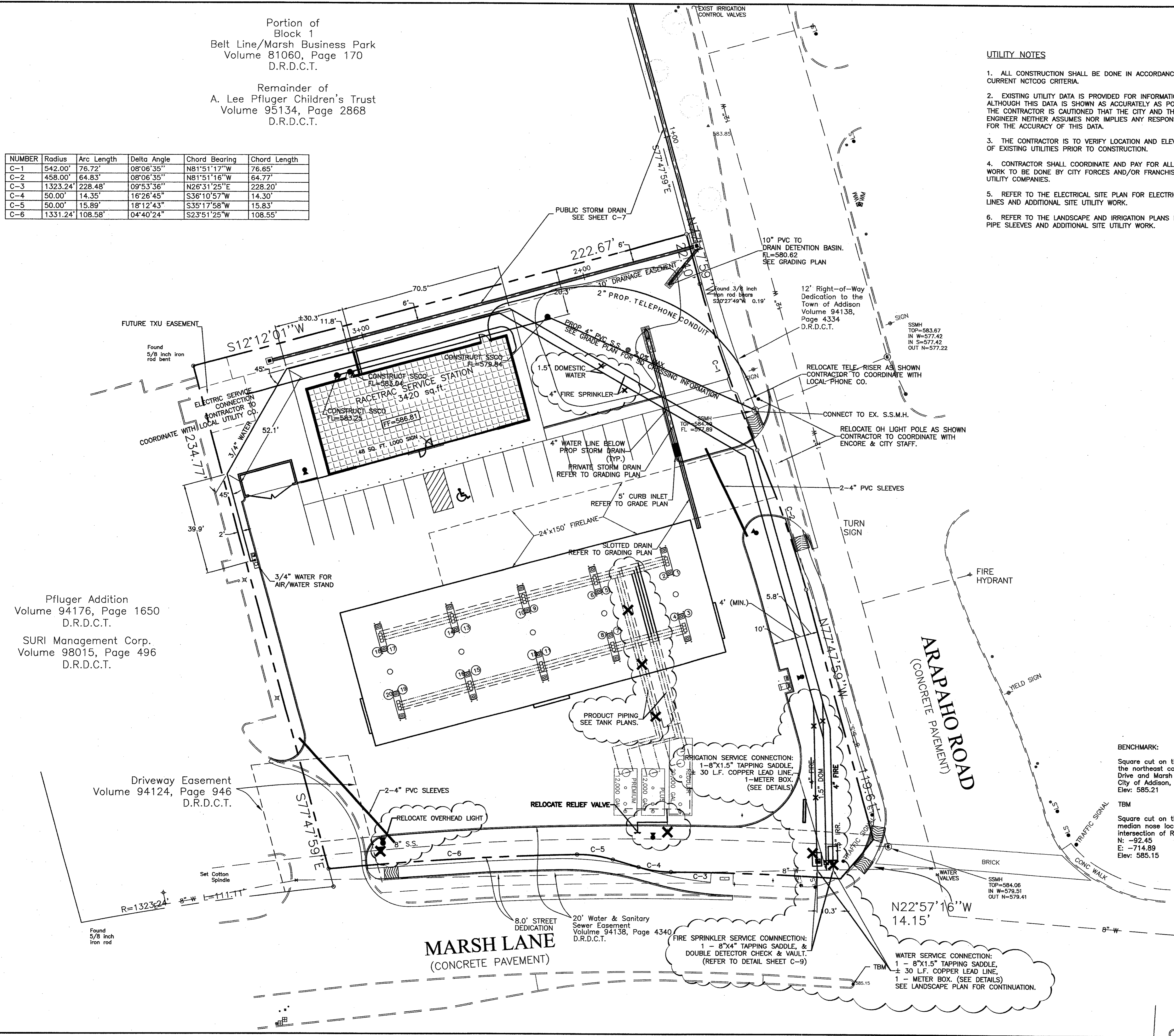
Portion of
Block 1
Belt Line/Marsh Business Park
Volume 81060, Page 170
D.R.D.C.T.

Remainder of
A. Lee Pfluger Children's Trust
Volume 95134, Page 2868
D.R.D.C.T.

NUMBER	Radius	Arc Length	Delta Angle	Chord Bearing	Chord Length
C-1	542.00'	76.72'	08°06'35"	N81°51'17"W	76.65'
C-2	458.00'	64.83'	08°06'35"	N81°51'16"W	64.77'
C-3	1323.24'	228.48'	09°53'36"	N26°31'25"E	228.20'
C-4	50.00'	14.35'	16°26'45"	S36°10'57"W	14.30'
C-5	50.00'	15.89'	18°12'43"	S35°17'58"W	15.83'
C-6	1331.24'	108.58'	04°40'24"	S23°51'25"W	108.55'

UTILITY NOTES

1. ALL CONSTRUCTION SHALL BE DONE IN ACCORDANCE WITH CURRENT NCTCOG CRITERIA.
2. EXISTING UTILITY DATA IS PROVIDED FOR INFORMATION ONLY. ALTHOUGH THIS DATA IS SHOWN AS ACCURATELY AS POSSIBLE, THE CONTRACTOR IS CAUTIONED THAT THE CITY AND THE ENGINEER NEITHER ASSUMES NOR IMPLIES ANY RESPONSIBILITY FOR THE ACCURACY OF THIS DATA.
3. THE CONTRACTOR IS TO VERIFY LOCATION AND ELEVATION OF EXISTING UTILITIES PRIOR TO CONSTRUCTION.
4. CONTRACTOR SHALL COORDINATE AND PAY FOR ALL UTILITY WORK TO BE DONE BY CITY FORCES AND/OR FRANCHISE UTILITY COMPANIES.
5. REFER TO THE ELECTRICAL SITE PLAN FOR ELECTRIC POWER LINES AND ADDITIONAL SITE UTILITY WORK.
6. REFER TO THE LANDSCAPE AND IRRIGATION PLANS FOR PIPE SLEEVES AND ADDITIONAL SITE UTILITY WORK.



LEGEND

EXISTING	DESCRIPTION	NEW
---	EDGE OF PAVEMENT	---
---	BUILDING FOOTPRINT	---
---	CONC. CURB & GUTTER	---
---	CONCRETE PAVEMENT	---
---	ASPHALT PAVEMENT	---
⊗	WATER VALVE	⊗
⊕	WATER METER	⊕
⊕	FIRE HYDRANT	⊕
•	S.S. CLEANOUT	•

BENCHMARK:
Square cut on the centerline of a curb inlet at the northeast corner of the intersection of Beltway Drive and Marsh Lane. Benchmark provide by the City of Addison, Texas. Elev: 585.21

TBM
Square cut on the top of a concrete curb at the median nose located on the North side of the intersection of Realty Drive and Marsh Lane. N: -92.45 E: -714.89 Elev: 585.15

AS-BUILT DRAWINGS

THESE DOCUMENTS REFLECT AS-BUILT CONDITIONS PER INFORMATION SUBMITTED BY THE OWNER, CONTRACTOR AND/OR INSPECTING ENTITY.

Konstantine Bakintas, PE

Pfluger Addition
Volume 94176, Page 1650
D.R.D.C.T.

SURI Management Corp.
Volume 98015, Page 496
D.R.D.C.T.

Driveway Easement
Volume 94124, Page 946
D.R.D.C.T.

MARSH LANE
(CONCRETE PAVEMENT)

ARAPAHO ROAD
(CONCRETE PAVEMENT)

DRAWING FILE: E:\2002.000.000\2002.015.000.dwg\UTILITY PLAN.DWG

RaceTrac Petroleum, Inc.
300 Technology Ct.
Smyrna, GA 30082
Contact: Julie Diamond
(770) 431-7600 x1129

Baird, Hampton & Brown, Inc.
Engineering & Surveying
300 W. 7th St., Ste. 500 Ft. Worth, TX 76102
Tel: (817) 338-1277 Fax: (817) 338-2426 E-Mail: baird@bhb.com

UTILITY PLAN

NO.	REVISIONS	DATE
7	CHANGE GRADING & PRIVATE SD PER CLIENT	08/12/03
6	ADD 60' CANOPY & REMOVE HOSE BIBS	07/17/03
5	CHANGE WATER SERVICE BOXES PER CITY	03/20/03
4	REALTY DRIVE CHANGED TO ARAPAHO ROAD	02/03/03

DESIGNED: DAH
DRAWN: DAH
CHECKED: KB
DATE: 08/15/00

UTILITY PLAN

RaceTrac Service Station #646
On-Site Improvements

Marsh Ln. & Arapaho Rd.
Addison, Texas

BHB PROJECT NO:
2002.015.000

SHEET NO:
C-8 of 9C