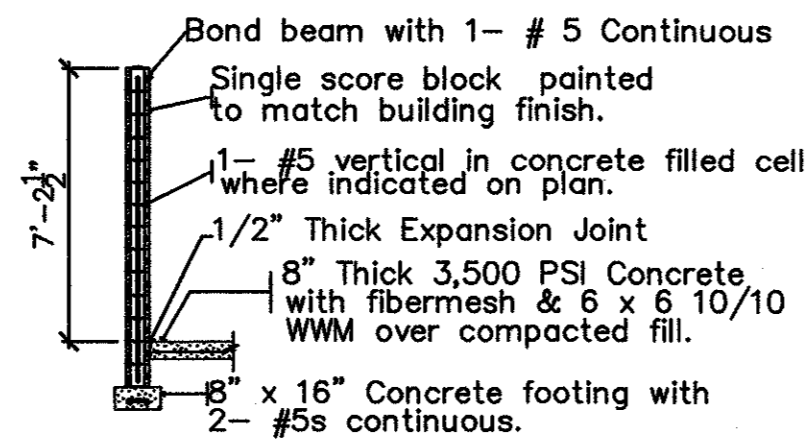
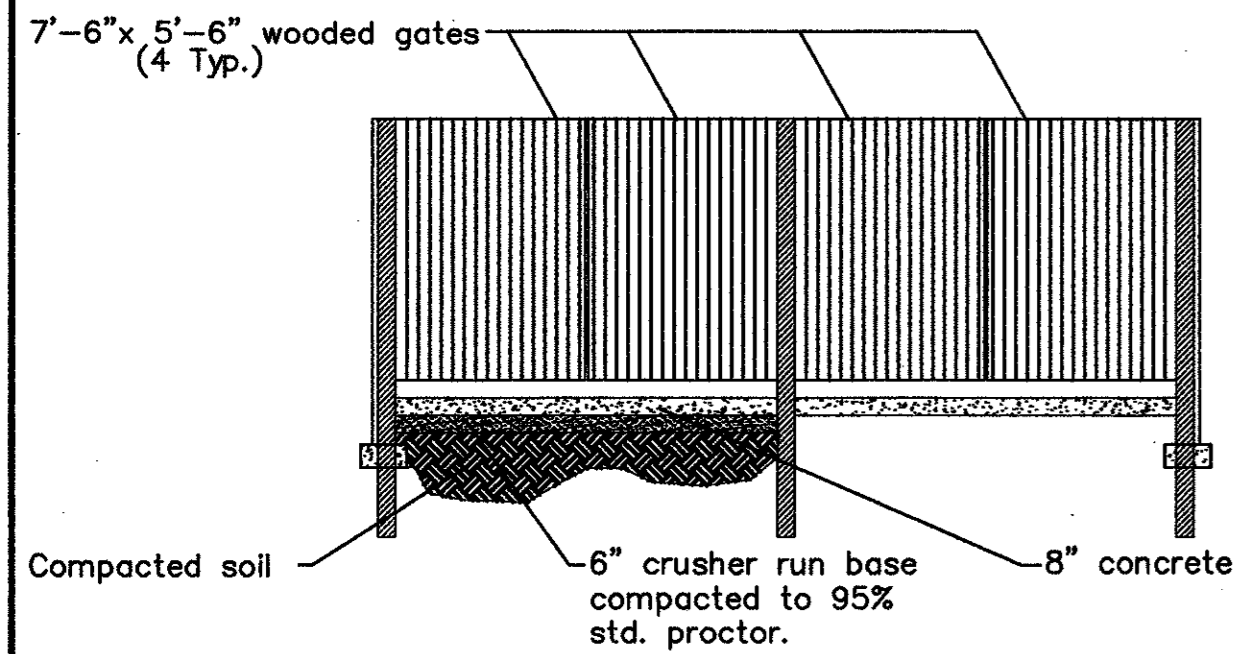


Dumpster Enclosure Plan
N.T.S.

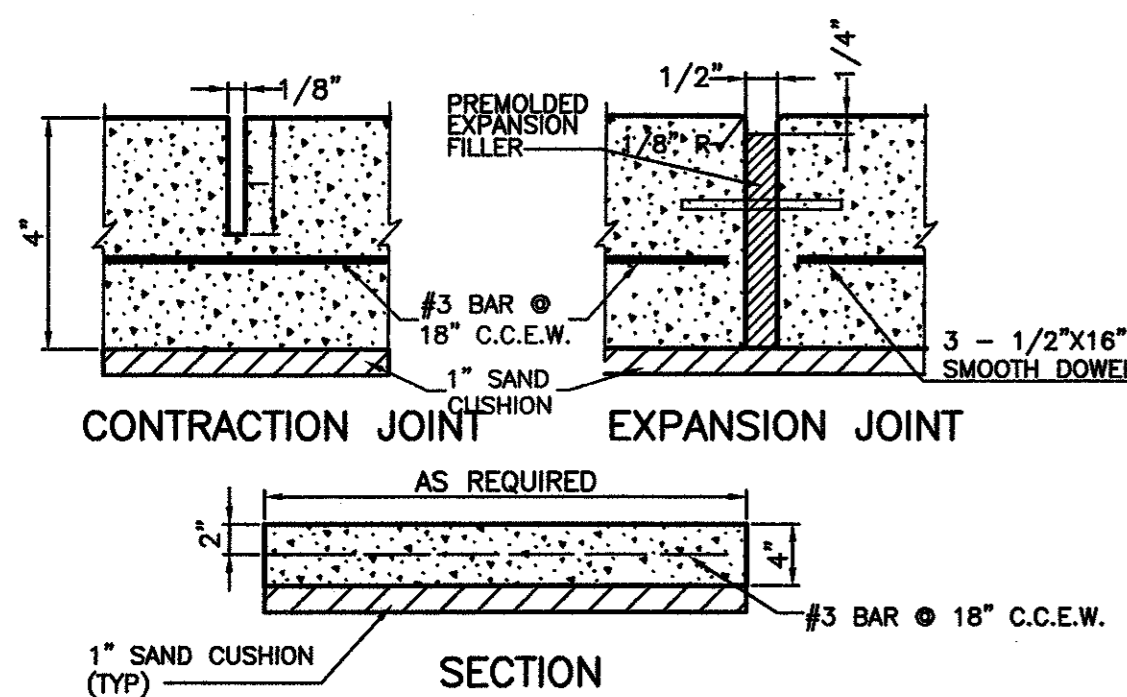


Dumpster Wall Section
N.T.S.



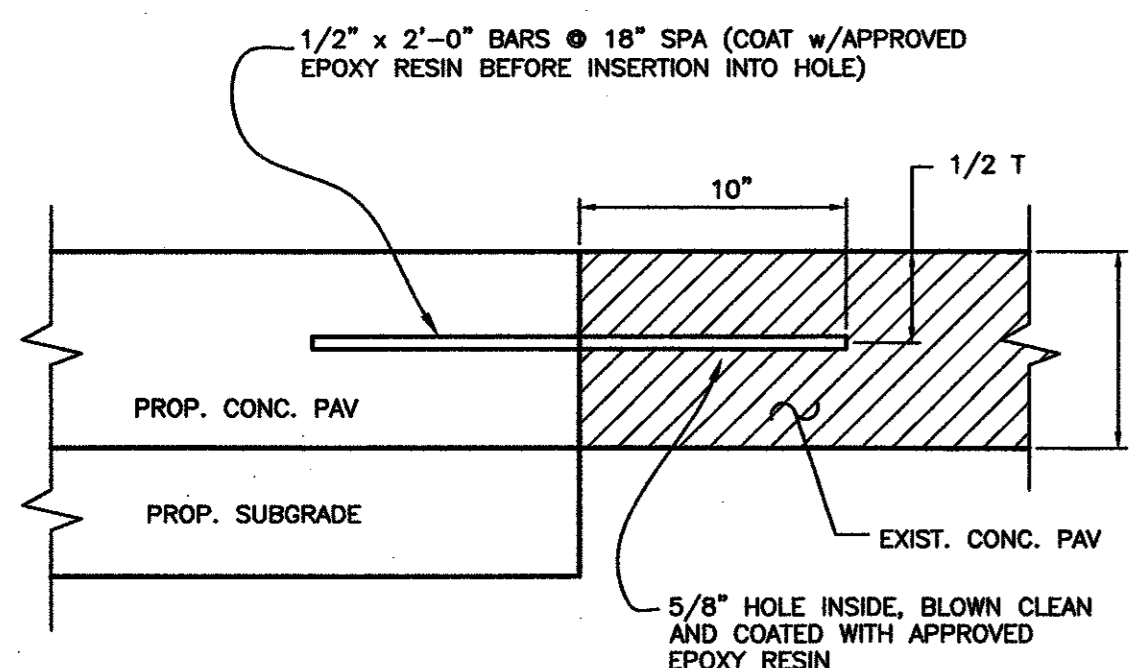
Dumpster Enclosure Front Elev.
N.T.S.

Dumpster Enclosure Detail
N.T.S.

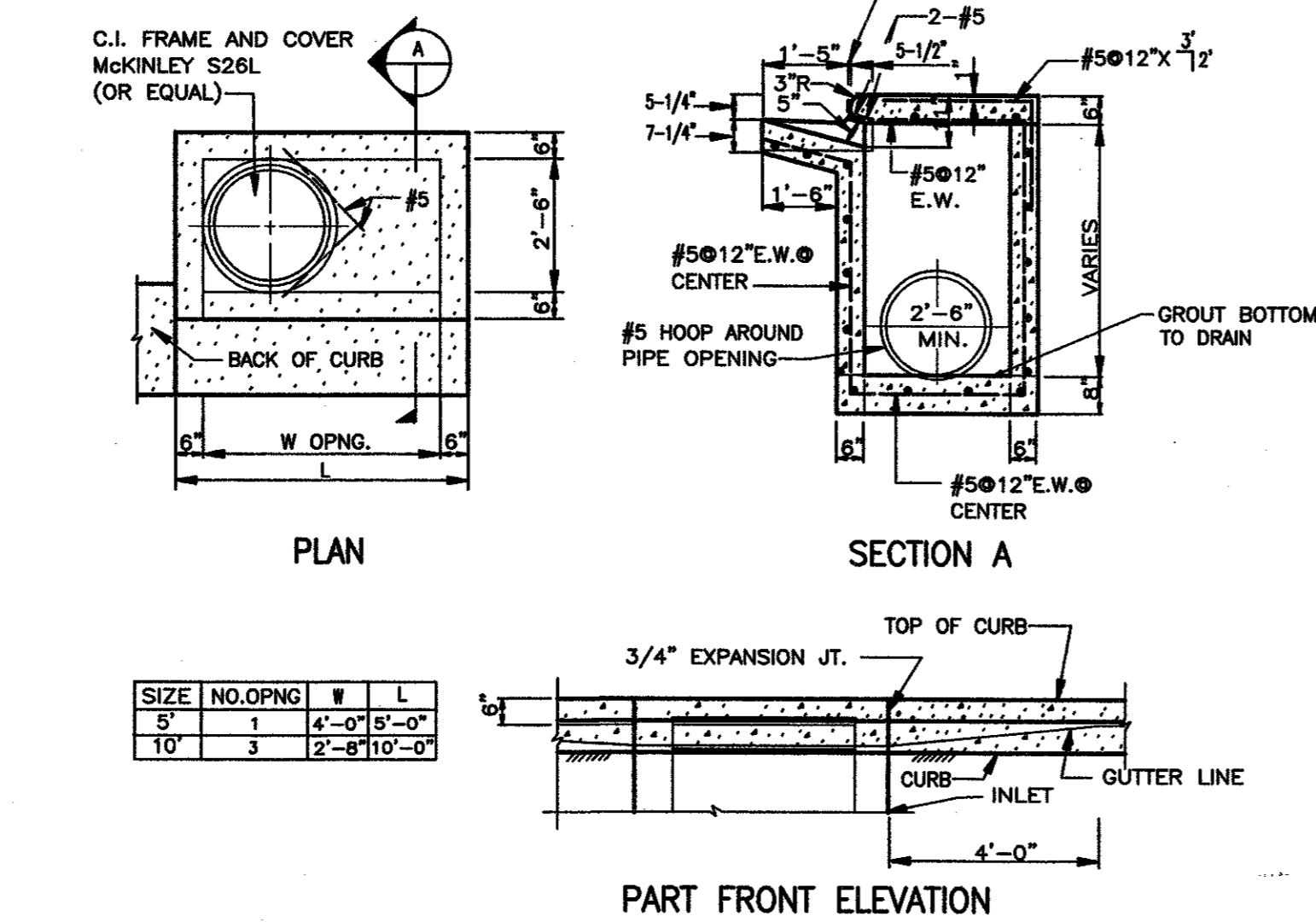


Sidewalk Joint Detail
N.T.S.

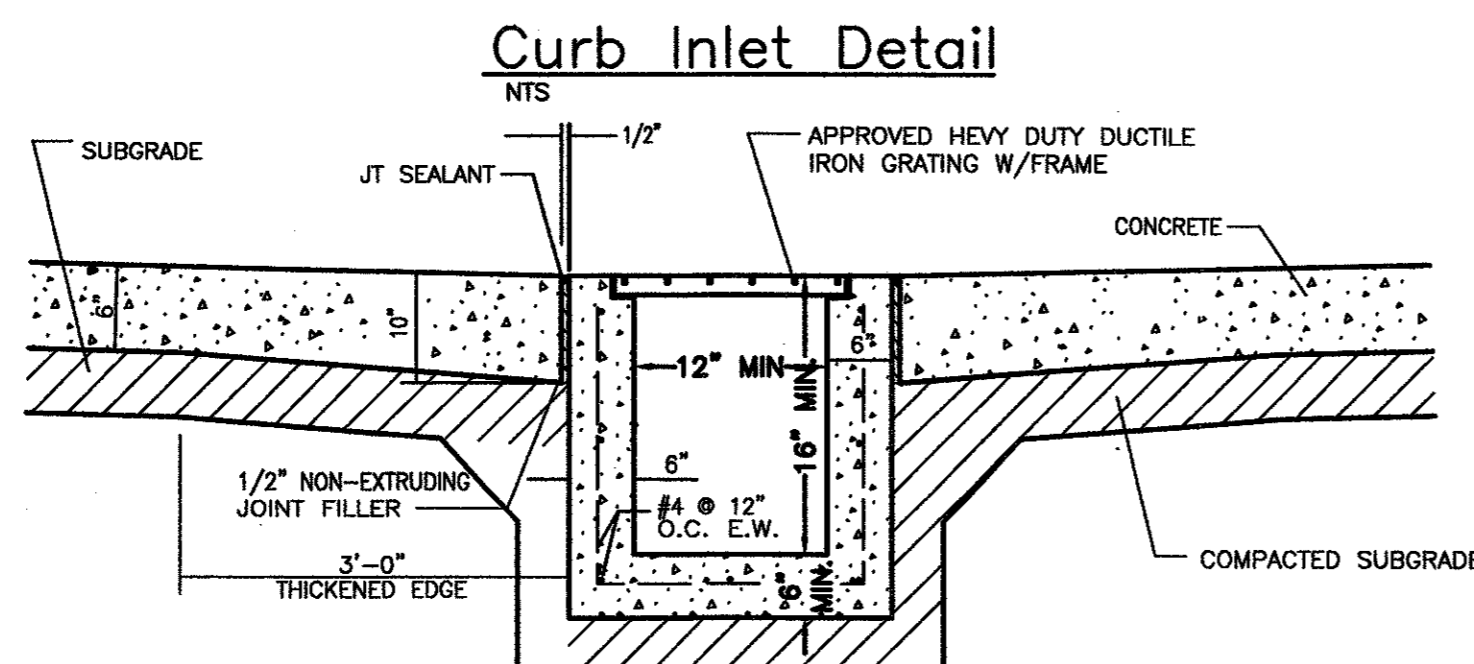
1. PROVIDE TRANSVERSE CONTRACTION JOINTS AT INTERVALS NOT EXCEEDING SIDEWALK WIDTH. PROVIDE CENTERLINE CONTRACTION JOINTS IN SIDEWALKS WIDER THAN 8'-0". SPACING OF CENTERLINE CONTRACTION JOINTS SHALL NOT EXCEED 6'-0".
2. PROVIDE EXPANSION JOINTS AT INTERVALS NOT EXCEEDING 42'-0" ON CENTER. ALIGN EXPANSION JOINTS WITH CURB & GUTTER EXPANSION JOINTS WHERE APPLICABLE.



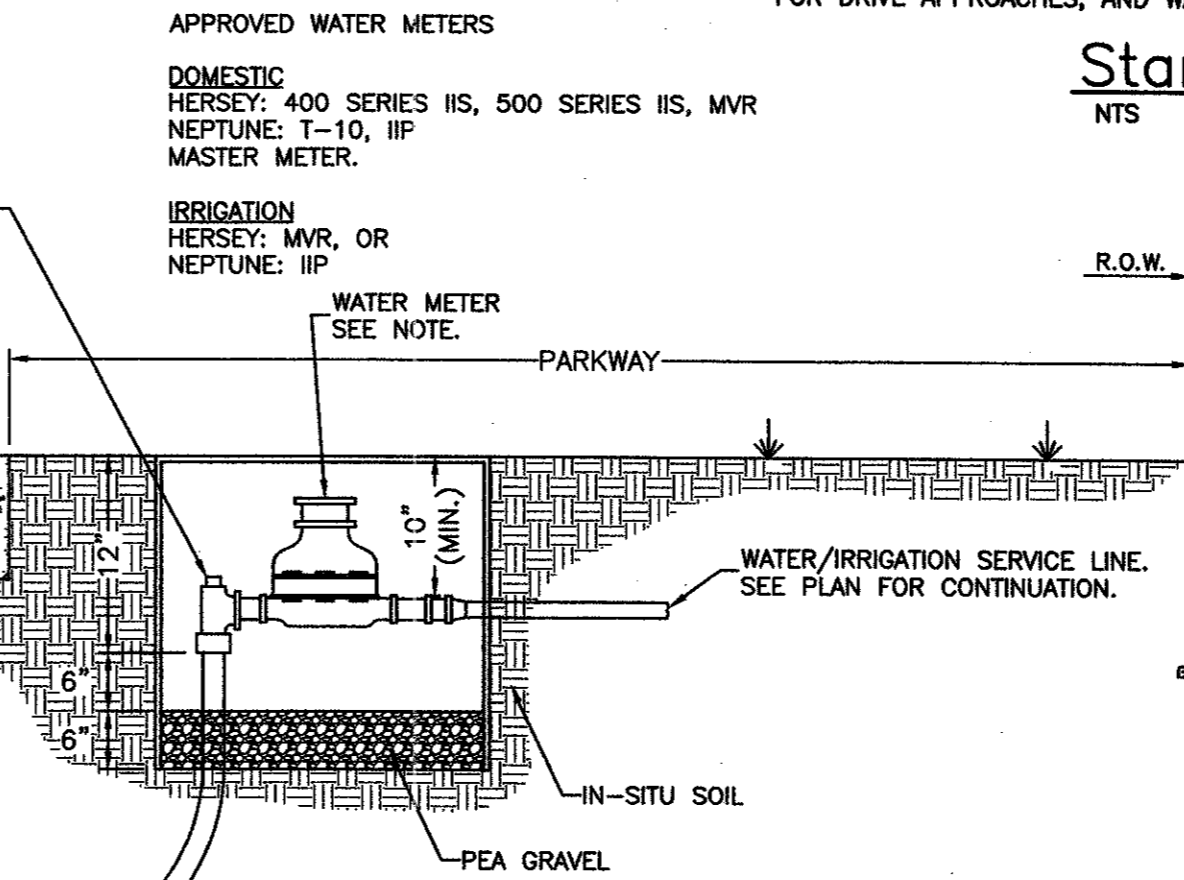
Pavement Joint Detail
N.T.S.



WATER SERVICE INSTALLATION
1" OR 1-1/2" LINE

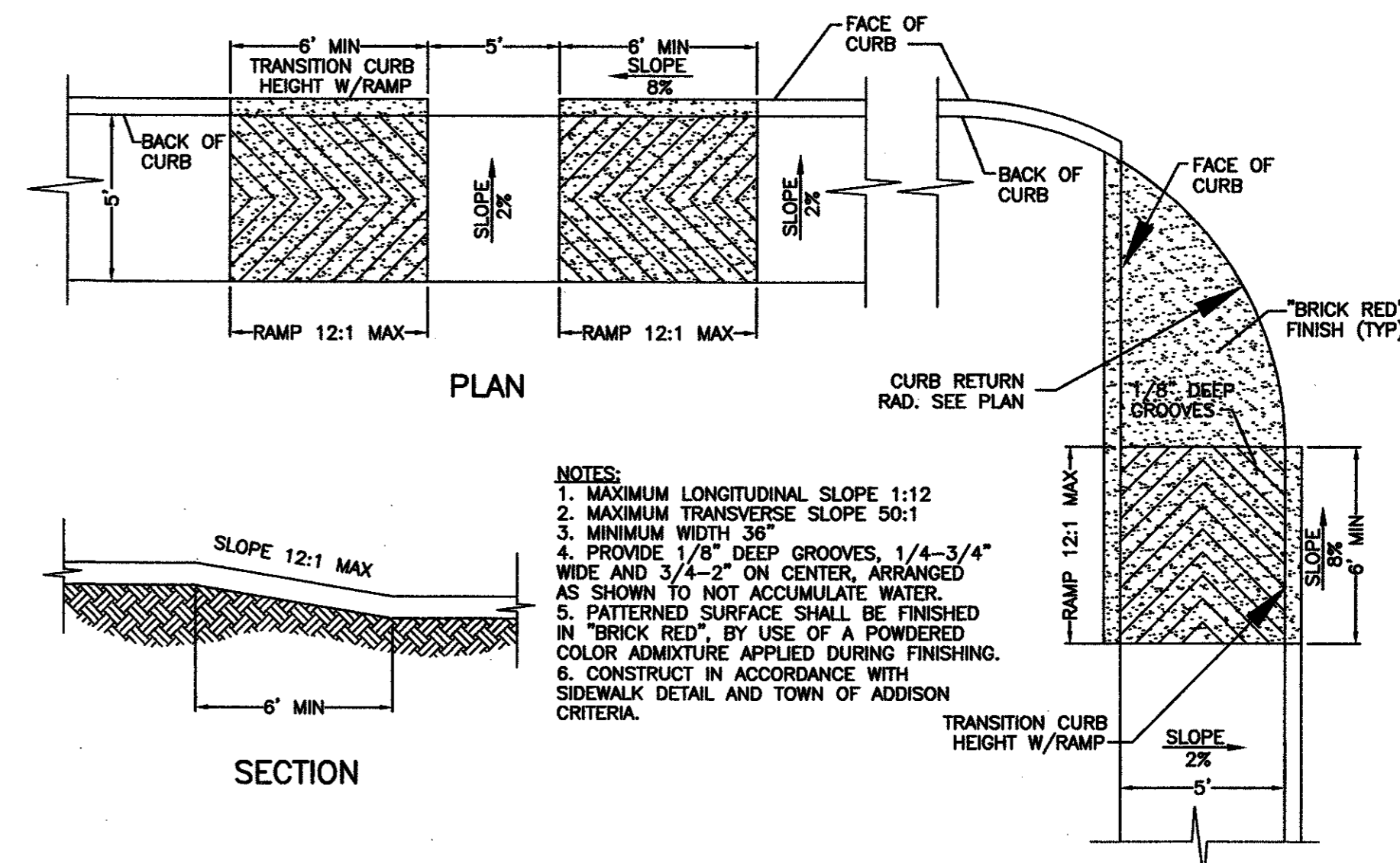


Trench Drain Section
N.T.S.



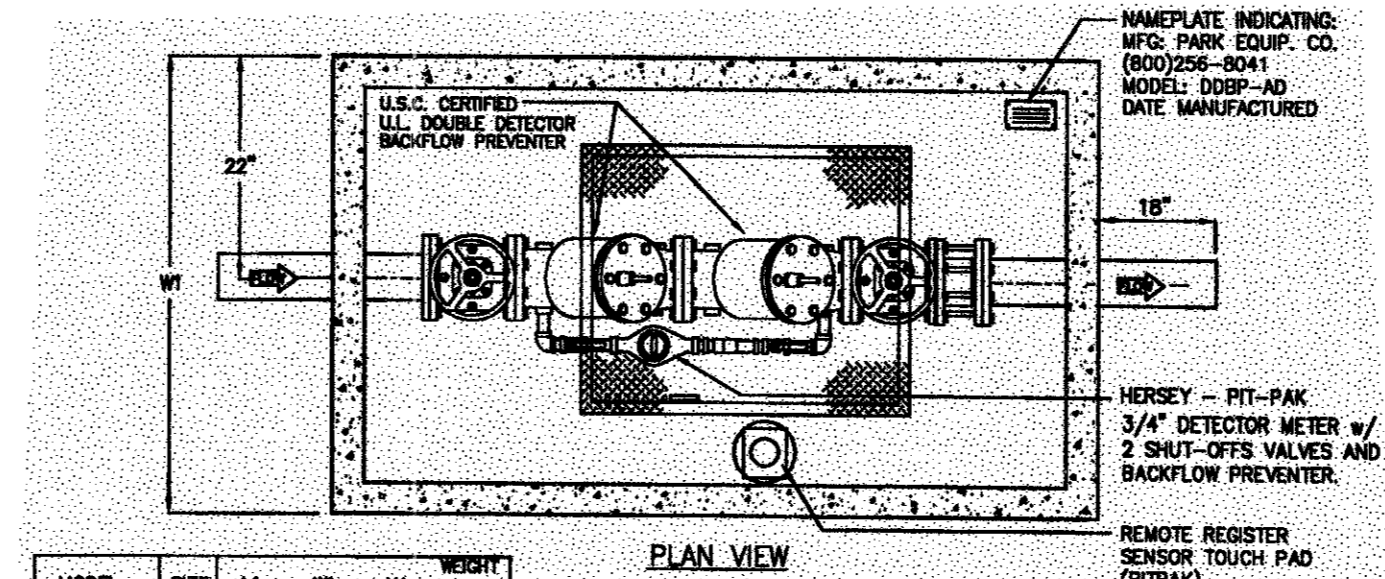
Standard Driveway Detail
N.T.S.

NOTE: EXIST. CURB AND GUTTER, IF ANY, MUST BE SAWS AS DIRECTED BY THE ENGINEER. NO. 3 BARS 12" C-C TO BE LAID INTO EXIST. CONC. MINIMUM 12" FOR DEFORMED BAR SPLICES, LAP BARS 40 DIAMETERS AND TIE. FOR DRIVE APPROACHES, AND WALK USE NO. 3 @ 18" C-C BOTH WAYS.

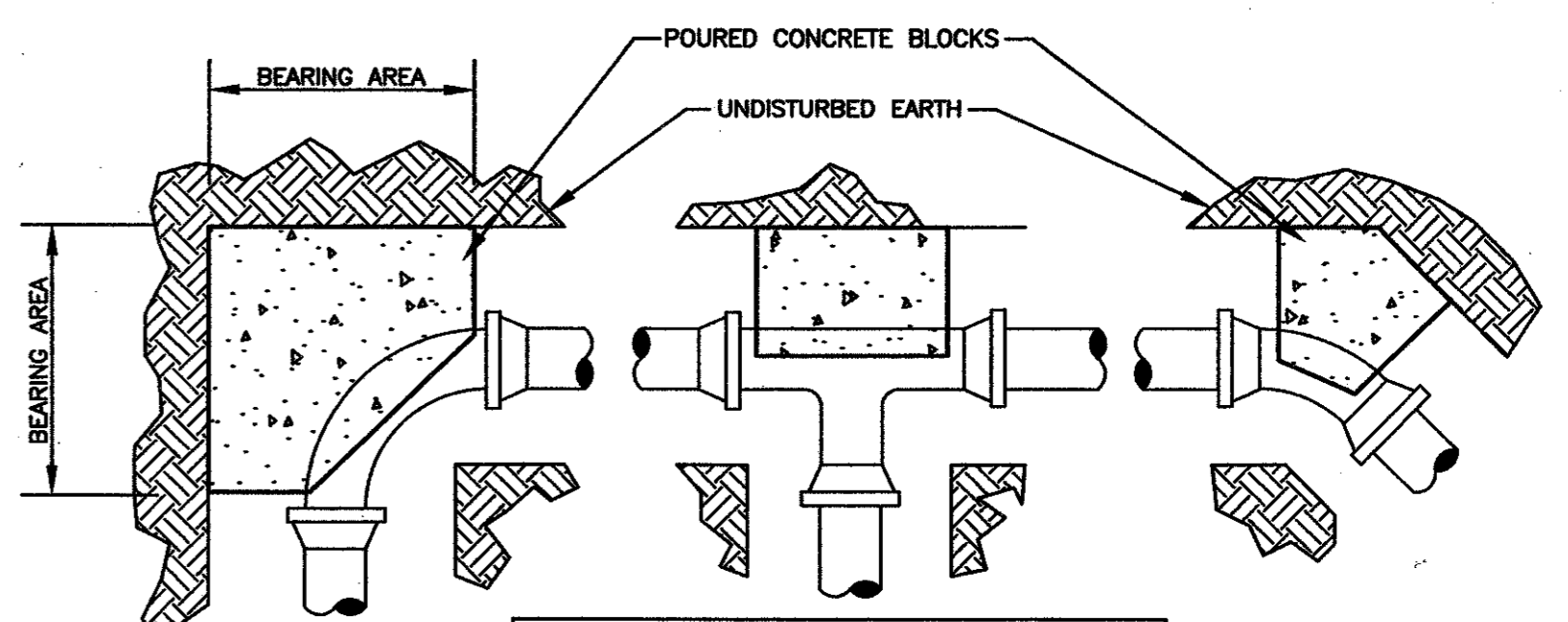


CURB RAMP DETAILS
N.T.S.

- NOTES:
1. TAPPING SADDLE AND CORPORATION STOP SHALL BE POLY-WRAPPED (8 MIL) AND HAND BACKFILLED WITH SAND TO A DEPTH OF 12". ADDITIONAL BACKFILL MAY BE MACHINE INSTALLED WITH MATERIAL FREE OF ROCKS AND CLODS EXCEEDING #3".
 2. ALL COMPANION FLANGES SHALL BE ELLIPTICAL BRASS, AND ALL BOLTS & NUTS SHALL BE GRADE 316 STAINLESS STEEL 3/8"-11 X 2-1/2" HEX HEAD.
 3. METER SHALL BE SET LEVEL IN ALL DIRECTIONS.



Double Check Detector Check & Vault
N.T.S.



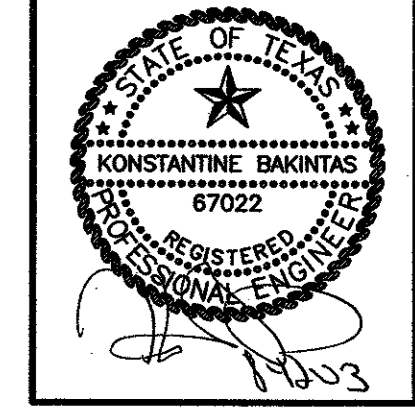
BEARING AREA OF BLOCK IN SQ. FT.			
FITTING SIZES	TEE AND END	90° BEND	45° BEND
4" & 6"	7.2	10.8	5.0
8"	12.6	17.8	9.6
10"	19.8	27.8	15.2
12"	28.4	40.0	21.8

Thrust Block Details
N.T.S.

- NOTES:
1. ALL CONSTRUCTION TO BE IN ACCORDANCE WITH THE TOWN OF ADDISON STANDARDS AND SPECIFICATIONS.
 2. CONTRACTOR SHALL NOTIFY CITY PUBLIC WORKS INSPECTOR AT (972) 450-2848 AT LEAST 48 HOURS PRIOR TO BEGINNING INSTALLATION.
 3. ALL UNDERGROUND PIPE AND FITTINGS FOR FIRE LINE TO BE VISUALLY INSPECTED BY CITY PUBLIC WORKS INSPECTOR AND PRESSURE TESTED PRIOR TO BEING BACKFILLED.
 4. ALL PROPOSED TAPS ON THE EXISTING WATER MAINS FOR PROPOSED FIRE LINES SHALL BE COORDINATED WITH THE PUBLIC WORKS/UTILITIES INSPECTOR AT (972) 450-2848.
 5. CONCRETE SHALL HAVE A COMPRESSIVE STRENGTH OF 3000 PSI AT 28 DAYS WITH A MAXIMUM SLUMP OF 4 INCHES.
 6. ALL REINFORCING STEEL WILL BE CONTINUOUS AROUND CORNERS WITH MINIMUM LAP OF 24 INCHES.
 7. BILOO LID K-5 (3.5'x3.5') OR APPROVED EQUAL SHALL BE INSTALLED IN TOP. CONTRACTOR SHALL FURNISH 2 BILOO KEY WRENCHES WITH EACH INSTALLATION.
 8. ALL DUCTILE IRON WATER PIPE SHALL MEET SPECIFICATION ANSI/AWWA-C200/A21.50, CLASS 50 WITH 8 MIL POLYETHYLENE TUBE WRAP AND CEMENT LINING ACCORDING TO ANSI/AWWA-C104/A21.4.
 9. FAILURE TO OBTAIN PROPER INSPECTION WILL RESULT IN UNCOVERING ALL PIPE AND FITTINGS FROM MAIN LINE TO BUILDING FOR REINSPECTION.

NO.	REVISIONS	DATE	DESIGNED:	CHECKED:	DATE:
5	ADJUST DBL DET CHECK PER CITY STDS.	03/20/03	DAH	KB	08/15/00
5	MODIFY H/C RAMP, ADD WATER SERVICE	03/20/03	DAH	KB	
4	REALITY DRIVE CHANGED TO ARAPAHO ROAD	02/03/03	DAH	KB	
3	REVISIONS FOR REALITY DRIVE REALIGNMENT	12/30/02	DAH	KB	

MISCELLANEOUS DETAILS
RaceTrac Service Station #646
On-Site Improvements
 Marsh Ln. & Arapaho Rd.
 Addison, Texas



BHB PROJECT NO:
2002.015.000
 SHEET NO:
C-9 of 9C

DRAWING FILE: E:\2002.000.000.2002.015.000.dwg DETAILS.DWG