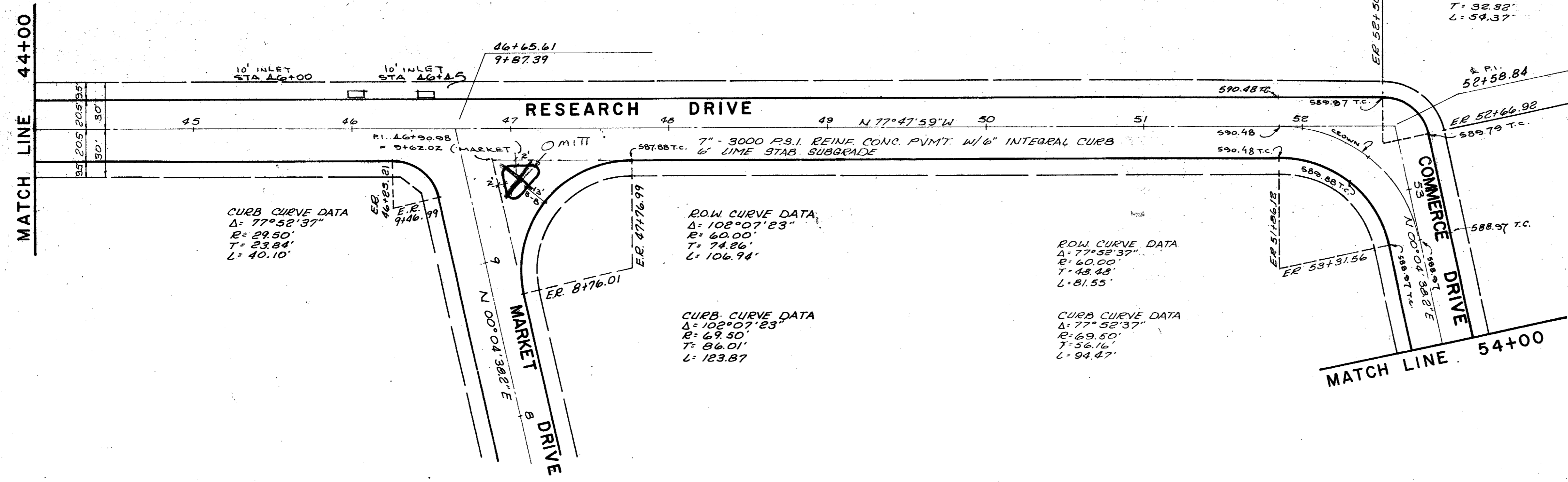
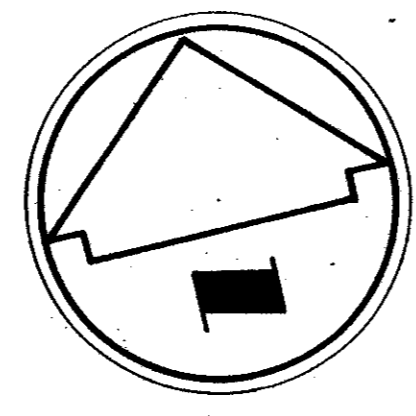


TYPICAL SECTION  
N.T.S.



ROW CURVE DATA  
 $\Delta = 77^\circ 52' 37''$   
 $R = 40.00'$   
 $T = 32.92'$   
 $L = 54.37'$

CURB CURVE DATA  
 $\Delta = 77^\circ 52' 37''$   
 $R = 30.50'$   
 $T = 24.64'$   
 $L = 41.46'$

CURB CURVE DATA  
 $\Delta = 77^\circ 52' 37''$   
 $R = 29.50'$   
 $T = 23.84'$   
 $L = 40.10'$

ROW CURVE DATA  
 $\Delta = 102^\circ 07' 23''$   
 $R = 60.00'$   
 $T = 74.86'$   
 $L = 106.94'$

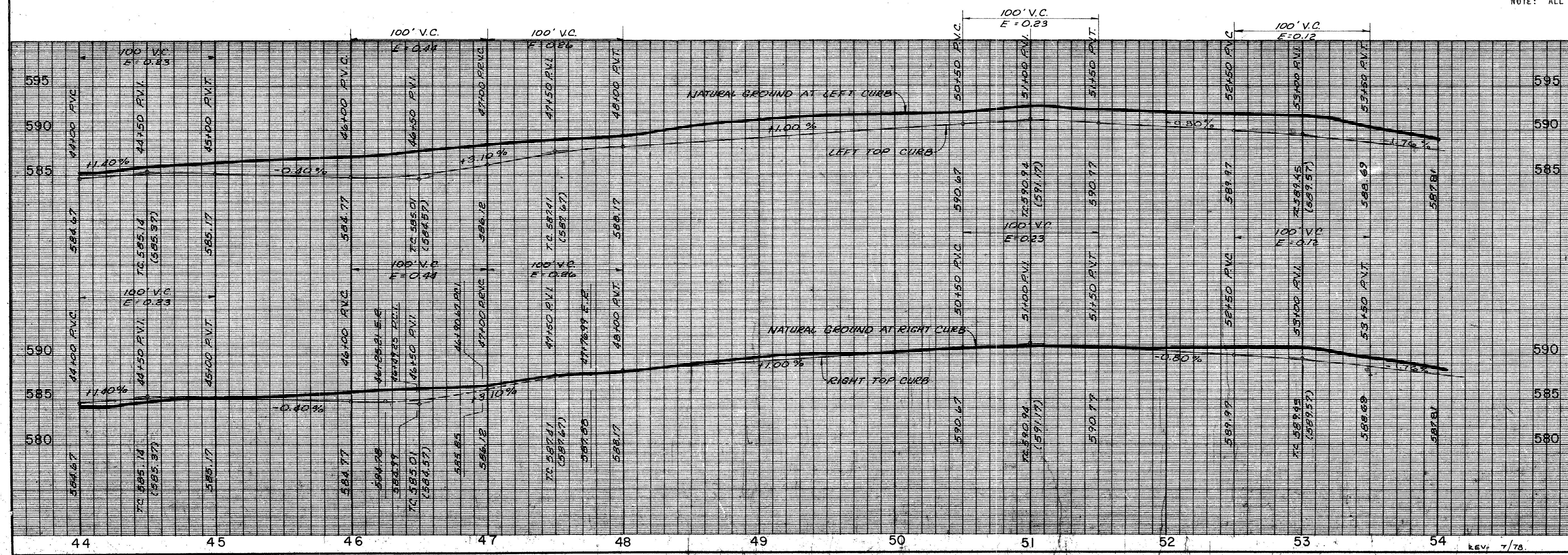
CURB CURVE DATA  
 $\Delta = 102^\circ 07' 23''$   
 $R = 49.50'$   
 $T = 86.01'$   
 $L = 123.87'$

ROW CURVE DATA  
 $\Delta = 77^\circ 52' 37''$   
 $R = 60.00'$   
 $T = 43.48'$   
 $L = 81.55'$

CURB CURVE DATA  
 $\Delta = 77^\circ 52' 37''$   
 $R = 49.50'$   
 $T = 36.46'$   
 $L = 94.27'$

- BENCH MARK: "BM" on conc. East end of headwall North side Beltline Rd. and 500'± west of Southeast corner of Addition. Elev. 581.51 (set)
- BENCH MARK: R.R. Spike in P.P. North side Beltline Rd. and 500'± East of existing Marsh Lane. Elev. 579.27 (set)

NOTE: ALL DIMENSIONS ARE TO BACK OF CURB



**PAVING PLANS**

**DAL-MAC DEVELOPMENT CORPORATION**  
 MAYES & BROCKETTE, INC. CONSULTING ENGINEERS

**CITY OF ADDISON, TEXAS**

DESIGN	DRAWN	DATE	SCALE	NOTES	FILE	NO.
M.G.	C.Z.	4-15-78	H: 1"=40' V: 1"=6'	W.P.		

REV: 7/78