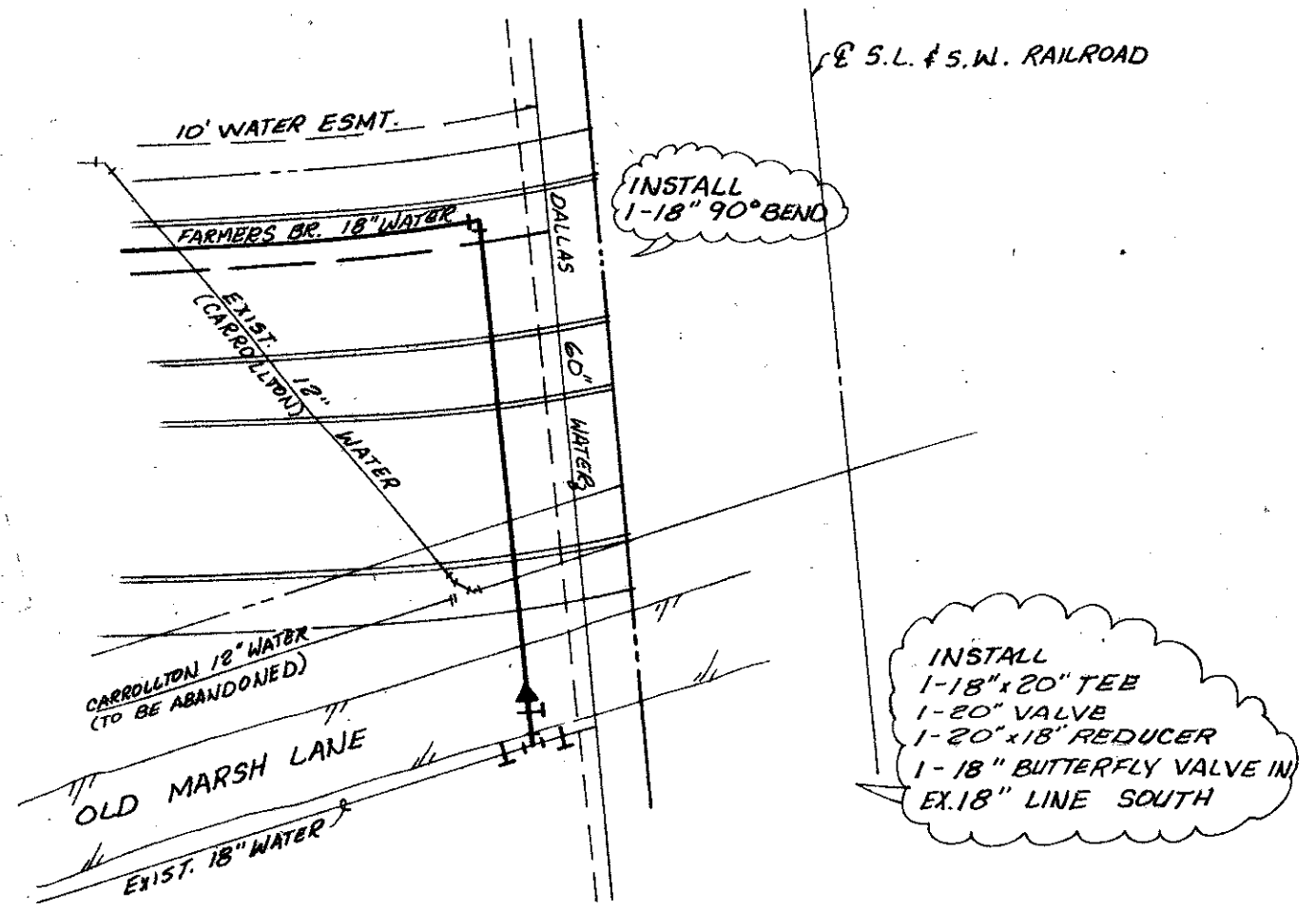
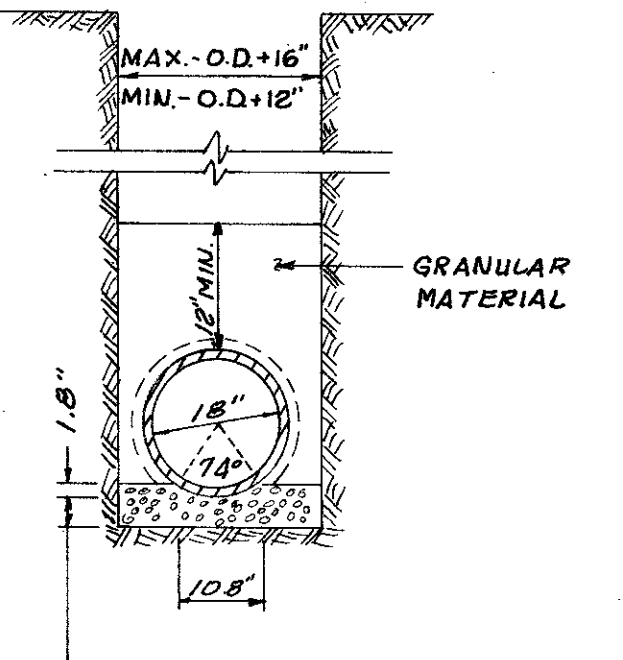


NOTE:
 1) CONTRACTOR IS TO PLACE TEMP BLOCKING & TEST NEW 18" LINE NORTH PRIOR TO MAKING TIE-IN TO EXIST. MAIN.
 2) CONNECTION OF PROPOSED 18" R.C.C.P. TO EXIST. 18" R.C.C.P. IN BELT LINE ROAD IS NOT TO BE CONSTRUCTED PRIOR TO AUTHORIZATION FROM THE CITY OF FARMERS BRANCH. A PRE-CONSTRUCTION MEETING WITH THE CITY IS REQUIRED.
 3) 18" MAIN IS TO HAVE A MINIMUM COVER OF 5.0 FEET.



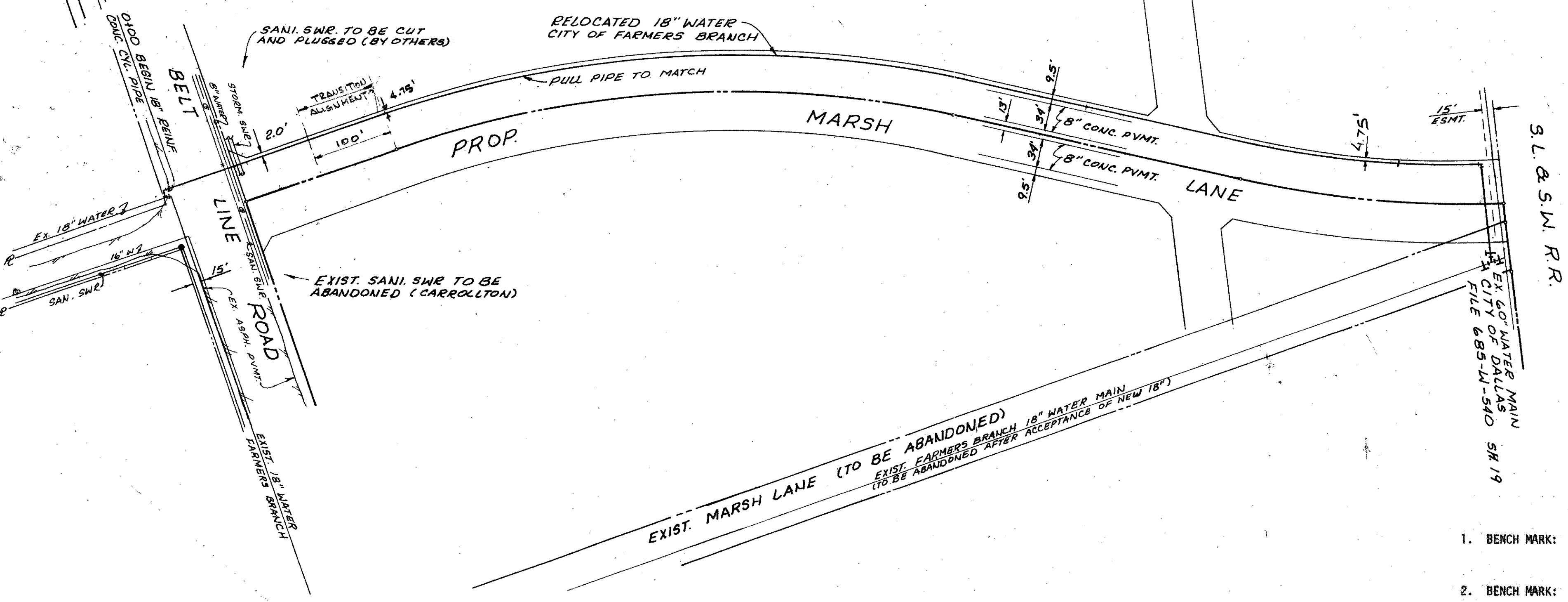
INTERSECTION DETAIL
 SCALE: 1"=40'

NOTE: MARSH LANE TO BE OPEN CUT. CONTRACTOR TO MAINTAIN TRAFFIC.

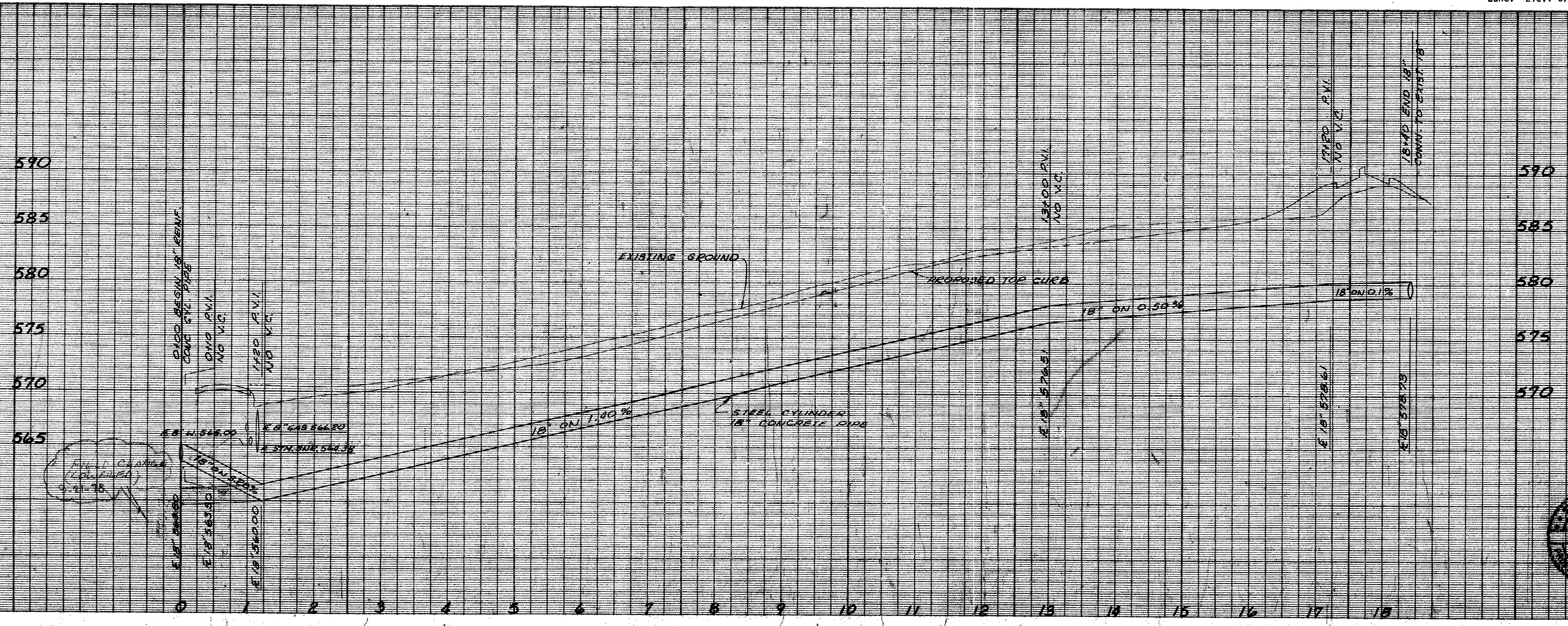


3" MIN., AT LEAST 1" UNDER BELLS, WASHED AND SCREENED GRAVEL 1/4" TO 1/2" GRADING.

EMBEDMENT TYPICAL
 N.T.S.



- BENCH MARK: 4" on conc. East end of headwall North side Belt Line Rd. and 500'± west of Southeast corner of Addition. Elev. 581.51 (set)
- BENCH MARK: R.R. Spike in P.P. North side Belt Line Rd. and 500'± East of existing Marsh Lane. Elev. 579.27 (set)



REVISIONS:
 2-22-78 ADDED NOTE ABOUT 18" WATER CONNECTIONS
 3-25-78 REVISED PROFILES & CONNECTIONS
 3-6-79 REVISED PROFILES & CONNECTIONS

RELOCATION OF 18" WATER MAIN
 REDLIFE MALLON GUNNIES PARK
DAL-MAC DEVELOPMENT CORPORATION
 MAYES & BROCKETTE, INC. CONSULTING ENGINEERS
CITY OF FARMERS BRANCH, TEXAS

DESIGN	DRAWN	DATE	SCALE	NOTES	FILE	NO.
MG	CZ	4/30/78	H: 1"=100' V: 1"=6'			