

scale 1" = 40' feet

T. L. CHENOWETH SURVEY  
ABSTRACT NO. 273

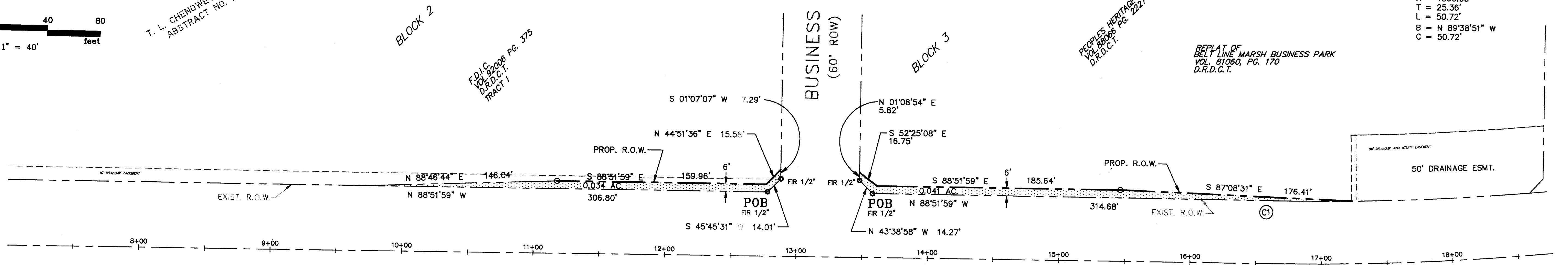
REPLAT OF  
BELT LINE MARSH BUSINESS PARK  
VOL. 81060, PG. 170  
D.R.D.C.T.

FD/C 3006 Pg. 375  
D.R.D.C.T.  
TRACT 1

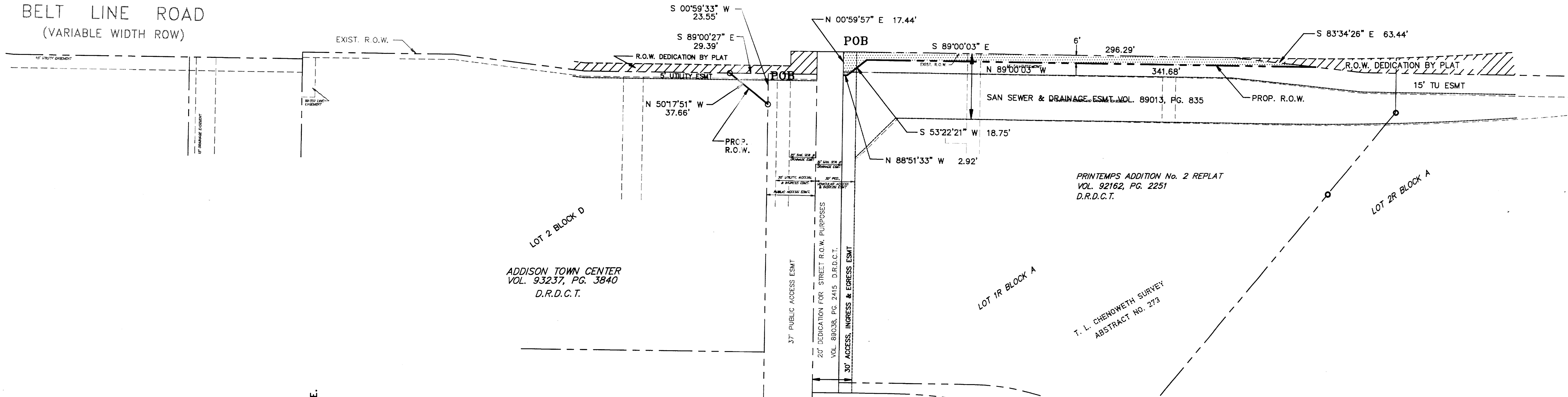
PEOPLES HERITAGE FEDERAL SM  
VOL. 88086 Pg. 2227  
D.R.D.C.T.

REPLAT OF  
BELT LINE MARSH BUSINESS PARK  
VOL. 81060, PG. 170  
D.R.D.C.T.

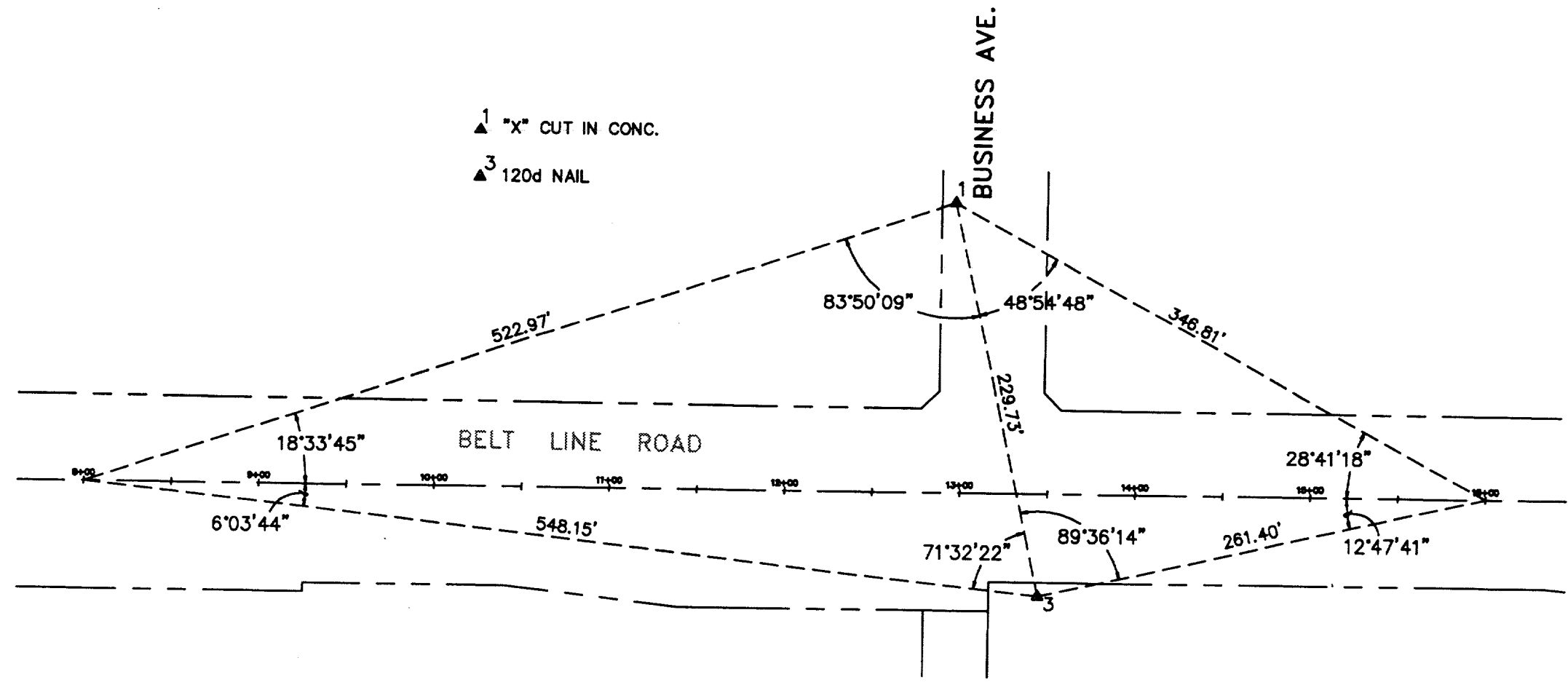
Ⓢ Δ = 01'33"45"  
R = 1860.00'  
T = 25.36'  
L = 50.72'  
B = N 89°38'51" W  
C = 50.72'



BELT LINE ROAD  
(VARIABLE WIDTH ROW)



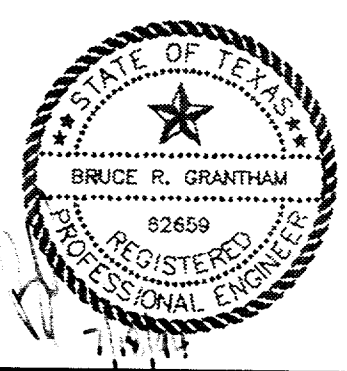
▲ "X" CUT IN CONC.  
▲ 3/12d NAIL



HORIZONTAL CONTROL

| NO. | REVISION | BY | DATE |
|-----|----------|----|------|
|     |          |    |      |
|     |          |    |      |
|     |          |    |      |
|     |          |    |      |

DESIGNED BY: B GRANTHAM  
DRAWN BY: EH&A  
CHECKED BY: B GRANTHAM  
SCALE: 1" = 40'  
DATE: JANUARY 1994  
FILE: \ADDISON\BUSINESS\ROWBUS



**EH&A** Espy, Huston & Associates, Inc.  
Engineering & Environmental Consultants  
13800 Montfort Drive, Suite 230  
Dallas, Texas 75240 (214) 387-0771

RIGHT-OF-WAY PLAN  
INTERSECTION IMPROVEMENTS  
BELT LINE ROAD AT BUSINESS AVENUE  
for  
THE TOWN OF ADDISON

SHEET NO. 14  
OF 46 SHEETS  
JOB NO. 15411