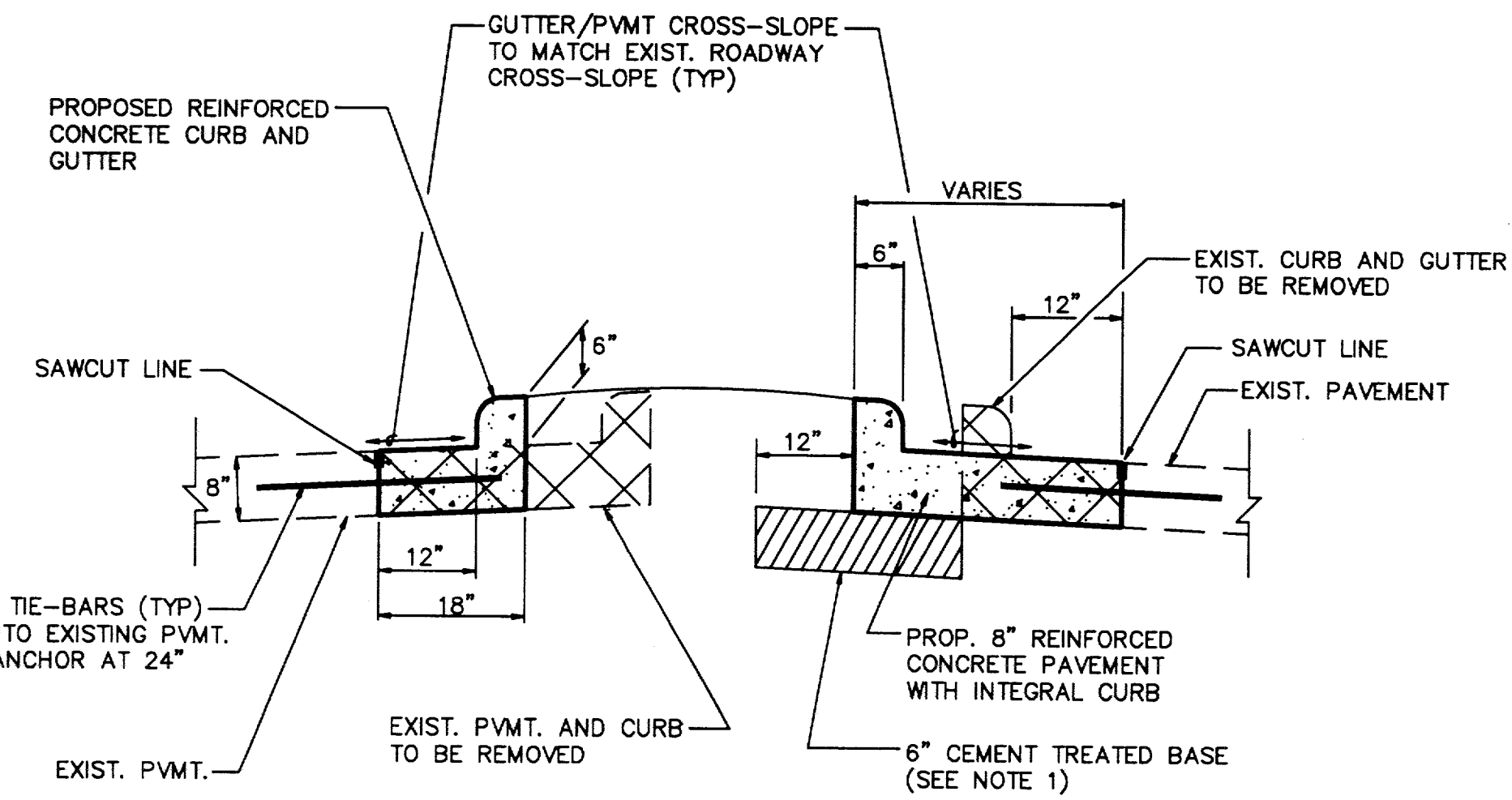


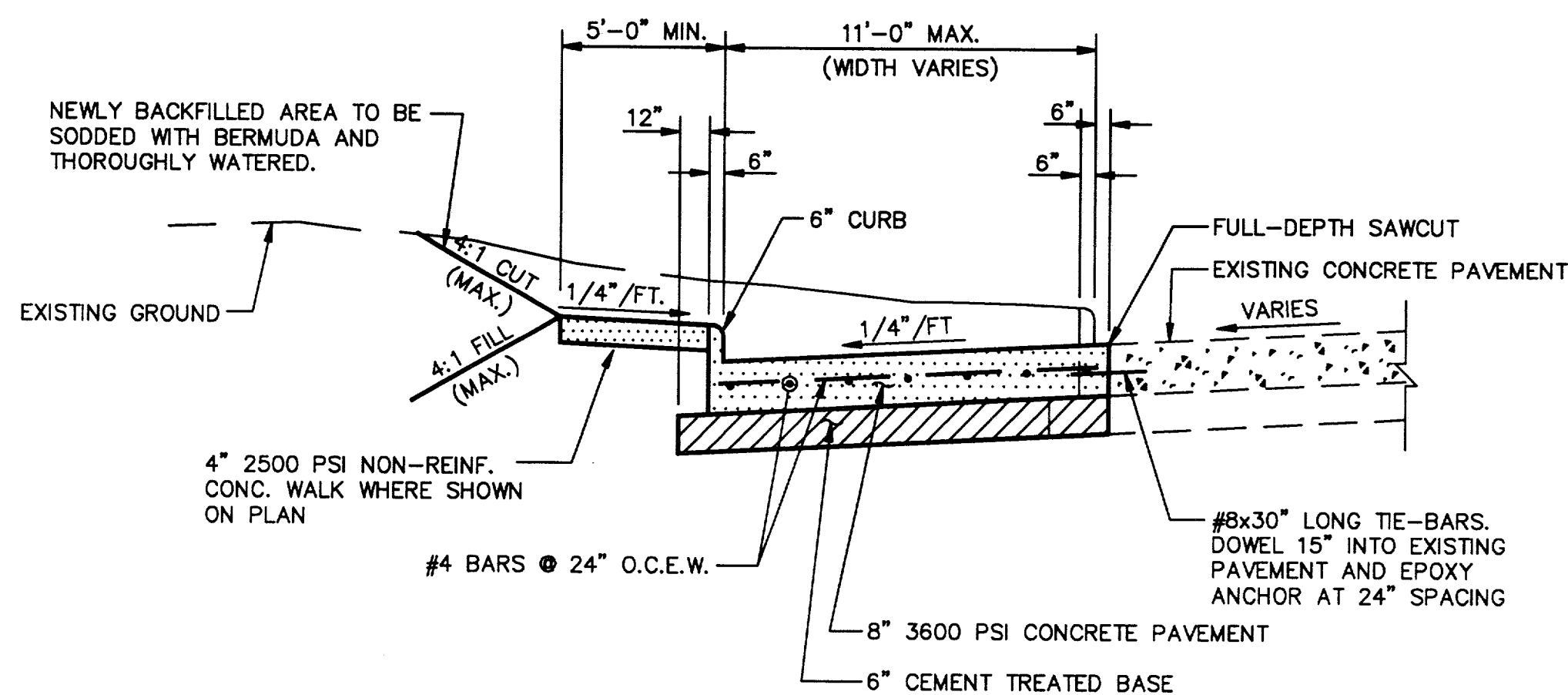
PAVEMENT WIDENING SECTION
A-A

NOT TO SCALE



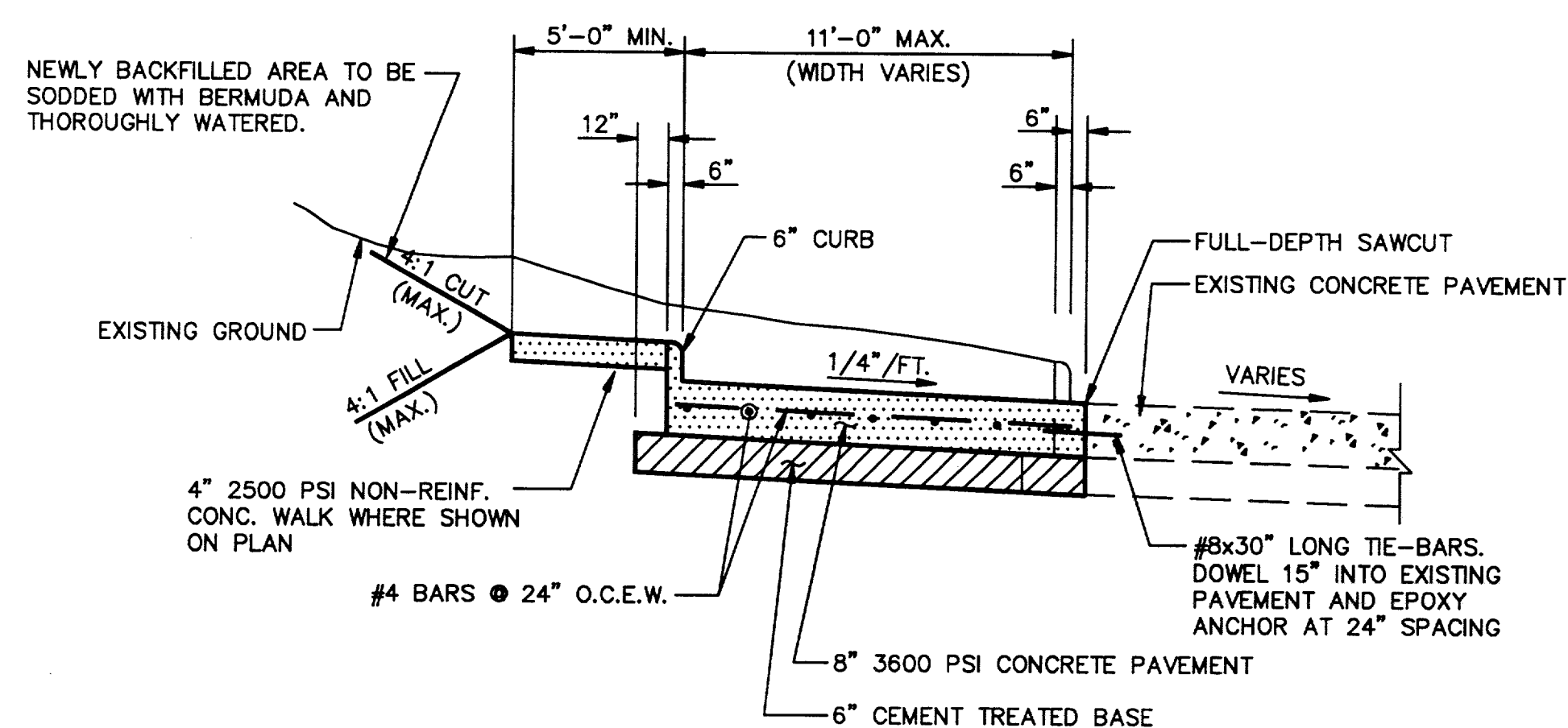
MEDIAN SECTION
D-D

NOT TO SCALE



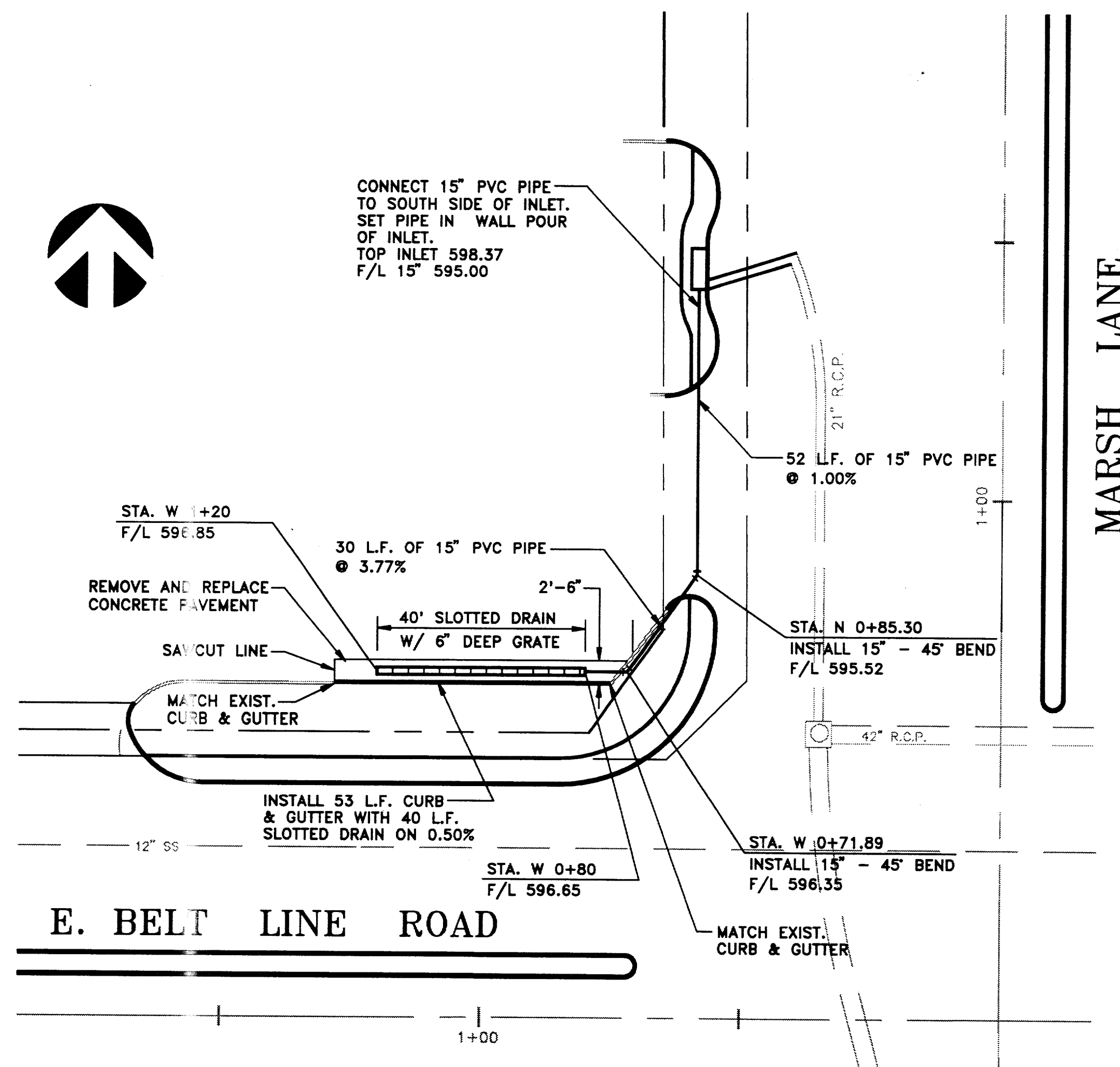
PAVEMENT WIDENING SECTION
B-B

NOT TO SCALE



PAVEMENT WIDENING SECTION
C-C

NOT TO SCALE



SLOTTED DRAINS DETAIL
1" = 20'

NOTE: REFER TO C.O.D. STD. 251D-1-2005 FOR PAVING AND GRADING REQUIREMENTS.

NOTES

1. BLOCK OUT A 3' LENGTH OF CEMENT TREATED BASE AT THE BACK OF CURB WHERE TREES ARE PLANTED IN A 3' WIDE MEDIAN. REFER TO LANDSCAPE PLANS FOR TREE LOCATIONS.

NO.	REVISION	BY	DATE

DESIGNED BY: J WALDBAUER
 DRAWN BY: EH&A
 CHECKED BY: B GRANTHAM
 SCALE: AS SHOWN
 DATE: DECEMBER 1993
 FILE: \\ADDISON\PROJECT2\DETAILS

EH&A Espey, Huston & Associates, Inc.
 Engineering & Environmental Consultants
 13800 Monfort Drive, Suite 230
 Dallas, Texas 75240 (214) 387-0771

CONSTRUCTION DETAILS
 INTERSECTION IMPROVEMENTS
 for THE TOWN OF ADDISON

SHEET NO. 24
 OF 46 SHEETS
 JOB NO. 13921