

ESTIMATED QUANTITIES

ITEM	DESCRIPTION	UNIT	DRAINAGE PLANS													PROJECT TOTAL																	
			35	36	37	38	39	40	41	42	43	44	45	46																			
470&S.P.	Manhole, Type "M", (8' Depth)	Each											1																			1	
470&S.P.	Manhole, Type "M", (13' Depth)	Each											1																			1	
479	Manhole, Type "M" Adjustments	Each																														1	
496 &S.P.	Remove Old Structure, Small (Headwalls, Wingwalls & Inlets)	Each																														25	
496&S.P.	Remove Old Structure, Large (Rawhide Creek Bridge)	L.S.																														1	
496&S.P.	Remove Old Structure, Large(7'x4.5'Pebble Beach Culvert & Junction Box)	L.S.			1																											1	
522	Concrete Curb & Gutter	L.F.																														1,364	
524	4" Concrete Sidewalk	S.Y.											10																			66	
524	Concrete Driveways (6")	S.Y.																														1,249	
560&S.P.	Metal Beam Guard Fence (12 Gauge)	L.F.																														700	
560&S.P.	Metal Beam Guard Fence (12 Gauge) Terminal Anchor Section	Each																														9	
568&S.P.	Chain Link Barrier Fence Relocation (Gates & Accessories)(4-foot)	L.F.																														80	
568&S.P.	Chain Link Barrier Fence Relocation (Gates & Accessories)(6-foot)	L.F.																														275	
580&S.P.	Field Office (For Engineer)	L.S.																															1
590	4" Concrete Median (2000 psi), Reinforced	S.Y.																															60
640&S.P.	Pull Boxes (Concrete)	Each																														52	
640&S.P.	Conduit (4") Schedule 40 PVC	L.F.																															1,907
640&S.P.	Conduit (3") Schedule 40 PVC	L.F.																															4,955
640&S.P.	Conduit (2") Schedule 40 PVC	L.F.																															11,872
752 &S.P.	Pavement Markers (4-inch, White, Reflectorized)	Each																															539
752 &S.P.	Traffic Barrier Buttons (6-inch, Reflectorized)	Each																															263
754&S.P.	Traffic Buttons, 4-inch, White (Non-reflectorized)	Each																															2,586
7301 &S.S.	Thermo Plastic Pavement Markings (18-inch, White)	L.F.																															388
SS-1	6" Water Main Adjustment	L.F.																															74
SS-2	8" Water Main Adjustment	L.F.	12																														353
SS-3	12" Water Main Adjustment	L.F.	16			47								35																		154	
SS-4	16" Reinforced Concrete Cylinder Pipe Adjustment	L.F.					64																										64
SS-5	4" Force Main Adjustment	L.F.		140																													140
SS-6	Adjust Water Valve Box	Each	2			1			1	1	2		3	1	1	2																21	
SS-7	Install 6" Gate Valve	Each		1																													1
SS-8	Relocate Water Meter ()	Each																															2
SS-9	Fire Hydrant Removal, Salvage, Relocation & Installation	Each	1											1																			3
SS-10	Fire Hydrant Vertical Adjustment	Each		1																													4
SS-11	6" Sanitary Sewer	L.F.																															105
SS-12	Cleanouts	Each																															1
SS-13	Miscellaneous Sanitary Sewer Adjustment	Each	2					1	1	1			1	1	3	1																16	
SS-14	Sanitary Sewer Manhole (0-8' Depth)	Each																															3
SS-15	24" Reinforced Concrete Cylinder Pipe Water Main	L.F.																															110

As BUILTS 11-22-83

CITIES OF ADDISON AND FARMERS BRANCH, TEXAS

MARSH LANE

BROOKHAVEN CLUB DRIVE TO BELT LINE ROAD

ESTIMATE QUANTITY SUMMARY

Turner Collie & Braden Inc.

Unit: PAL	Scale: Horiz. Vert.	Date: FEB. 1982
Designed: GGS	Checked: GGS	Job No.: 6042-010 Contract
Drawn:	Approved: PAL	Sheet: 7 of 66



ESTIMATED QUANTITIES

ITEM	DESCRIPTION	UNIT	PAVING PLANS																	DRAINAGE PLANS											
			8	9	10	11	12	13	14	15	16	17	18	19	20	21	22	23	23a	24	DETOURS	26	27	28	29	30	31	32	33	34	
100	Preparing Right-of-Way	Station	4.0	4.5	5.0	5.0	5.2	5.1	5.2	3.3	4.5	5.0	5.0	5.0	5.0	4.0	5.0		3.0												
104&S.P.	Remove Old Concrete (Curbs or Curbs & Gutters)	L.F.		390				100		70																					
10&S.P.	Remove Old Concrete (Pavement, Slope Protection & Sidewalk)	S.Y.		410			330	42	102	902	525			142	46		360		370												
110&S.P.	Unclassified Road Excavation (Density Control)	C.Y.	680	1,859	2,614	3,816	2,746	2,146	1,385		1,917	2,116	1,658	2,241	2,077	2,318	1,384	190	175												
120&S.P.	Unclassified Channel Excavation (Density Control)	C.Y.															260														
160&S.P.	Furnishing and Placing Topsoil (Sandy Loam)	C.Y.	380	322	429	595	571	410	362	83	383	523	571	496	326	303	341	448		249											
164&S.P.	Broadcast Seeding	S.Y.	2080	1950	940	1,830	2,100	1,880	1,700	650	2,140	2,240	2,350	2,160	1,650	1,670	1,470	2,360		1,400											
249	Flexible Base (Delivered-Type "A", Class 2, Grade 1 Density Control)	Ton																190													
260	Lime Treated Subgrade (Density Control)	S.Y.	2,560	5,780	3,965	4,065	3,955	4,240	4,305	970	4,015	3,745	3,615	3,850	4,230	4,760	3,300	4,220		2,605											
264	Lime Slurry (Type A)	Ton	41	94	64	66	64	69	70	16	65	61	59	62	68	77	54	68		42											
310	Prime Coat (MC-30)	Gal.	183	305	20		21	26			41								343												
340&S.P.	Hot Mix Asphaltic Concrete Pavement (Class "A", Type "D")	Ton	201	279	11		23	29			36								151		340			238	67	54	152				
340&S.P.	Hot Mix Asphaltic Concrete Pavement (Class "A", Type "B")	Ton	241	215																150		300			104	30	24	88			
360&S.P.	8" Reinforced Concrete Pavement	S.Y.	1,550	4,620	3,660	3,730	3,625	3,930	3,935	865	3,715	3,405	3,280	3,505	3,940	4,435	3,025	3,870		2,370											
360&S.P.	6", Monolithic Concrete Curb	L.F.		1,613	1,741	1,854	1,927	1,738	1,976	630	1,708	1,983	1,989	1,975	1,693	1,754	1,491	1,805		1,211											
360&S.P.	6" Monolithic Concrete Curb and Gutter	L.F.	187	210																											
400&S.P.	Unclassified Structural Excavation (Box Culverts)	C.Y.								2686																					
400 & S.P.	Cement Stabilized Backfill-Culverts and Channel	C.Y.																													
421&S.P.	Class "A" Concrete for Structures (Box Culvert, Wingwalls & Aprons)	C.Y.								792.4																					
421&S.P.	Class "A" Concrete for Structures (Junction Box)	C.Y.																													
421&S.P.	Class "A" Concrete for Structures (Headwalls for Pipes)	C.Y.																											46		
432	Riprap (Class "B" Concrete)	C.Y.								9													19								
440&S.P.	Reinforced Steel (Box Culverts, Headwalls, Wingwalls & Junction Box)	Lb.								109,953																			307		
450&S.P.	Pedestrian Handrail, Culvert Handrail (Aluminum)	L.F.																													
465&S.P.	18" Reinforced Concrete Pipe, Class III	L.F.																					6			88	116	11	58		
465&S.P.	21" Reinforced Concrete Pipe, Class III	L.F.																								65	143		156	78	
465&S.P.	24" Reinforced Concrete Pipe, Class III	L.F.																								41	34		36		
465&S.P.	27" Reinforced Concrete Pipe, Class III	L.F.																												59	
465&S.P.	30" Reinforced Concrete Pipe, Class III	L.F.																													
465&S.P.	33" Reinforced Concrete Pipe, Class III	L.F.																													
465&S.P.	36" Reinforced Concrete Pipe, Class III	L.F.																												77	
465&S.P.	39" Reinforced Concrete Pipe, Class III	L.F.																								63	396		84		
465&S.P.	42" Reinforced Concrete Pipe, Class III	L.F.																												132	
465&S.P.	48" Reinforced Concrete Pipe, Class III	L.F.																								182				283	
465&S.P.	54" Reinforced Concrete Pipe, Class III	L.F.																					120	135							
465&S.P.	60" Reinforced Concrete Pipe, Class III	L.F.																											462	500	
465&S.P.	66" Reinforced Concrete Pipe, Class III	L.F.																												105	
465&S.P.	72" Reinforced Concrete Pipe, Class III	L.F.																									268	38			
465&S.P.	78" Reinforced Concrete Pipe, Class III	L.F.																					705	450			232				
470&S.P.	6' Standard Inlet (4' Depth)	Each																									1	2	1	1	
470&S.P.	8' Standard Inlet (4' Depth)	Each																												1	
470&S.P.	10' Standard Inlet (4' Depth)	Each																											1	2	
470&S.P.	14' Standard Inlet (4' Depth)	Each																											1	2	
470&S.P.	20' Standard Inlet (4' Depth)	Each																											1	2	
470&S.P.	"Y" Inlet (5'-3" Depth)	Each																											3	3	
470&S.P.	Extra Depth Inlet (All Types)	L.F.																											1		

AS BUILTS 11-22-82

CITIES OF ADDISON AND FARMERS BRANCH, TEXAS

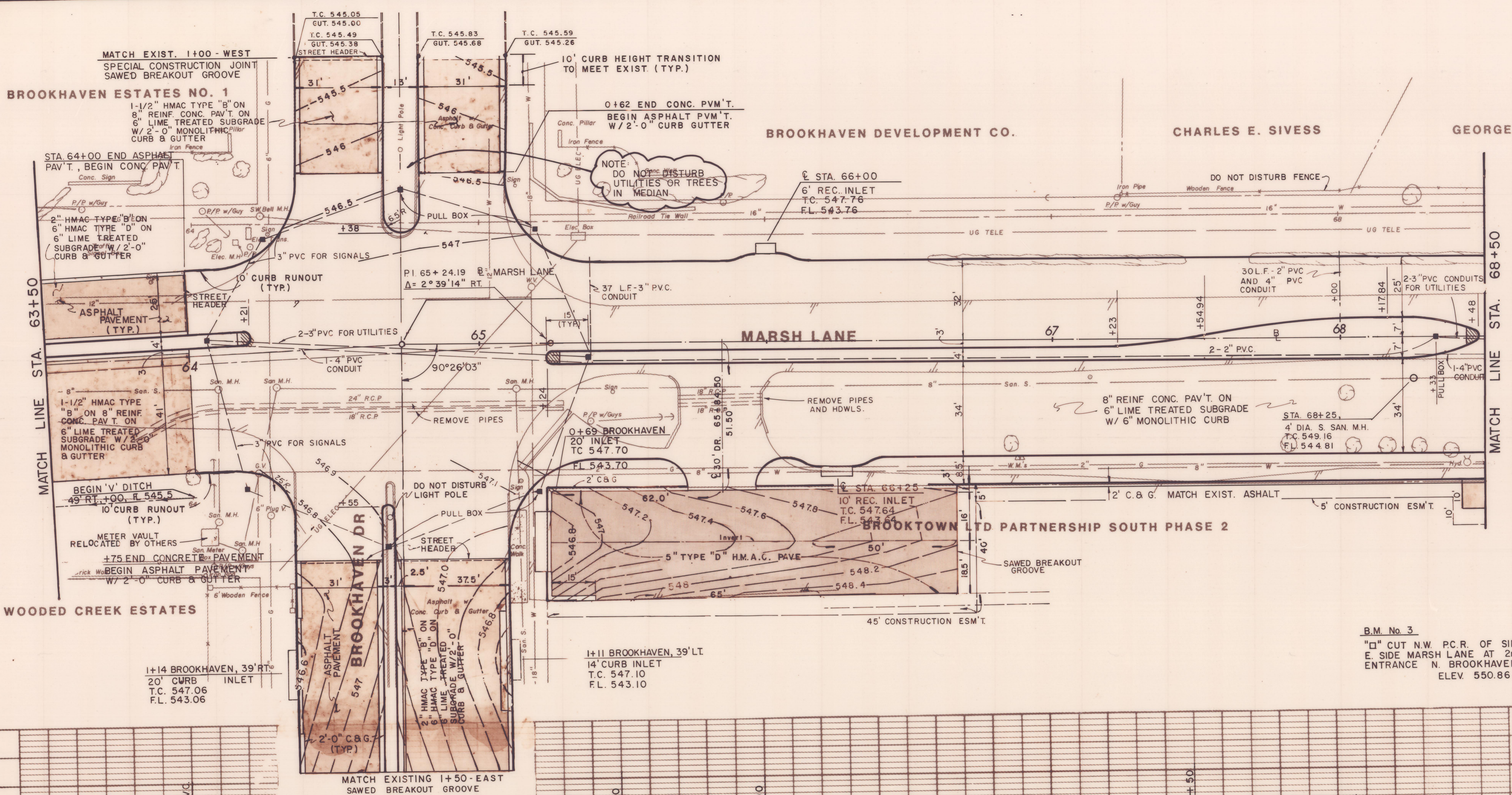
MARSH LANE
BROOKHAVEN CLUB DRIVE TO BELT LINE ROAD
ESTIMATE QUANTITY SUMMARY

Turner Collie & Braden Inc.



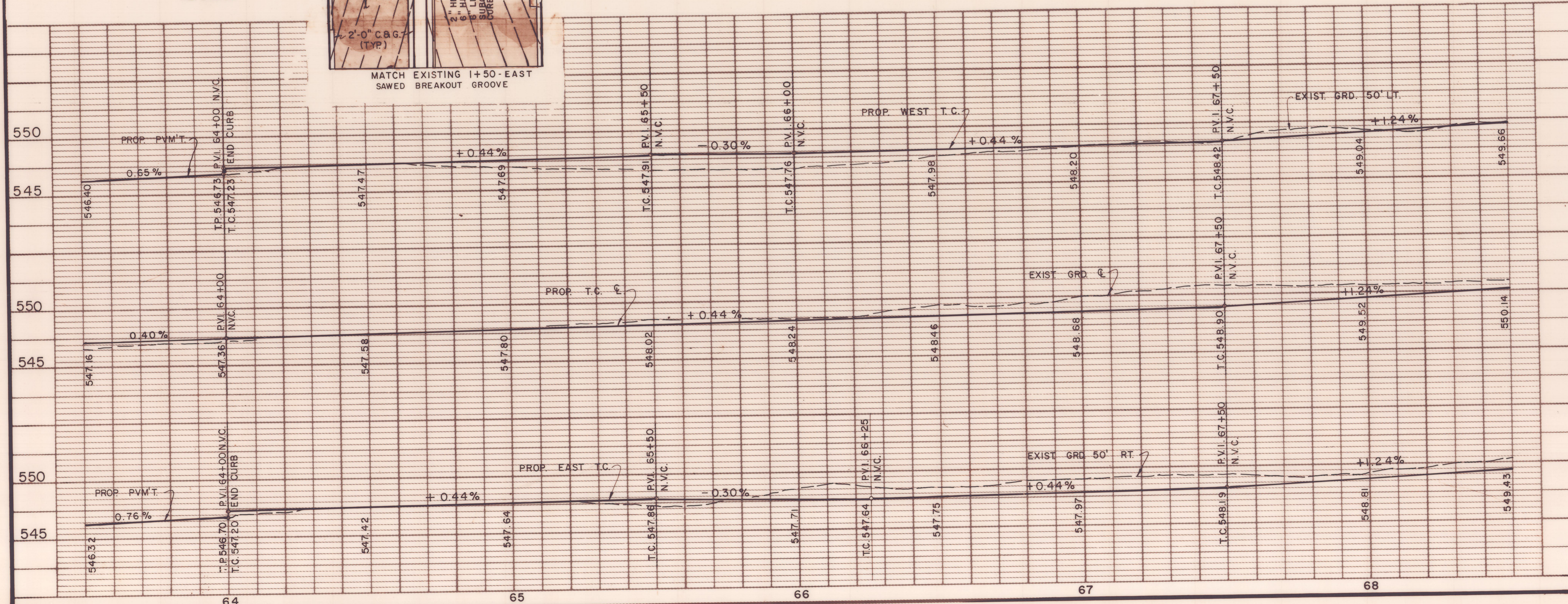
UNIT: PAL	Scale: Horiz. Vert.	Date: FEB 1982
Designed: GGS	Checked: GGS	Job No. 6042-010 Contract
Drawn:	Approved: PAL	Sheet 4 of 66

5/82 CHANGED AS PER ADDENDUM # 2, ART. 3.
5/82 CHANGED AS PER ADDENDUM # 1, ART. 7.



ITEM	DESCRIPTION	UNIT	QTY.
100	Preparing ROW	Sta	4.5
104&SP	Remove Old Conc (C&G)	L.F.	390
104&SP	Remove Old Conc (Pvnt)	S.Y.	410
110&SP	Unclass Rd Excav	C.Y.	1,859
160&SP	Furn & Pl Topsoil	C.Y.	322
164&SP	Broadcast Seeding	S.Y.	1,950
260	Lime Treated Subgrade	S.Y.	5,780
264	Lime Slurry	Ton	94
310	Prime Coat (MC-30)	Gal	305
340&SP	HM&C (Cl A Type D)	Ton	279
340&SP	HM&C (Cl A Type B)	Ton	215
360&SP	6" Reinf. Conc Pavement	S.Y.	4,620
360&SP	6" Mono Curb	L.F.	1,613
360&SP	6" Mono Curb & Gutter	L.F.	210
496&SP	Rem Old Struct, Small	Each	2
522	Concrete Curb & Gutter	L.F.	595
524	4" Conc Sidewalk	S.Y.	29
524	6" Conc Driveways	S.Y.	38
590	4" Conc Median	S.Y.	6
640&SP	Pull Boxes	Each	9
640&SP	Conduit, 4"	L.F.	163
640&SP	Conduit, 3"	L.F.	697
640&SP	Conduit, 2"	L.F.	618
752&SP	Pvnt Mkrs (4"Wh, Ref)	Each	30
752&SP	Trf Bar But (6" Ref)	Each	38
754&SP	Trf Button (4" Non-ref)	Each	152
7301	Thermoplastic Pnt Mkrs	L.F.	143
SS-14	Sanitary Sewer Manhole	Each	1

B.M. No. 3
 "□" CUT N.W. P.C. OF SIDEWALK
 E. SIDE MARSH LANE AT 2nd. DRWY.
 ENTRANCE N. BROOKHAVEN DR.
 ELEV. 550.86

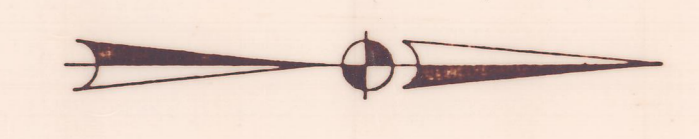
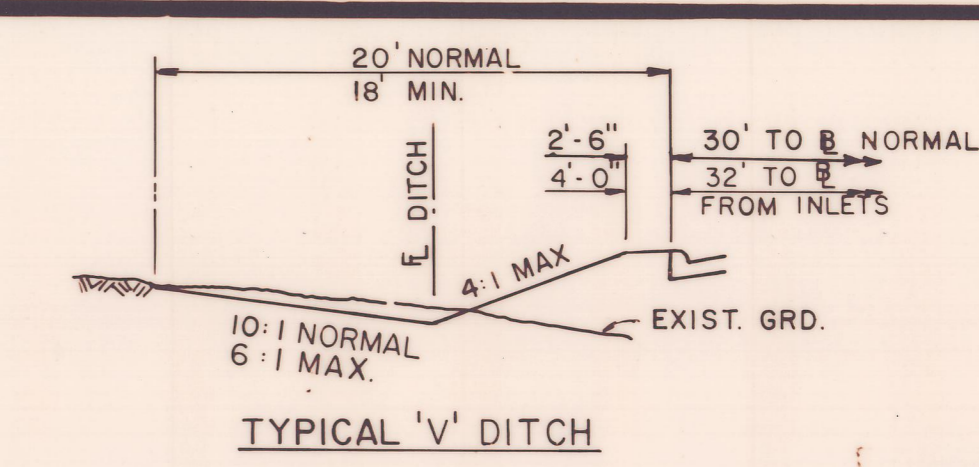


AS BUILT 11-22-83

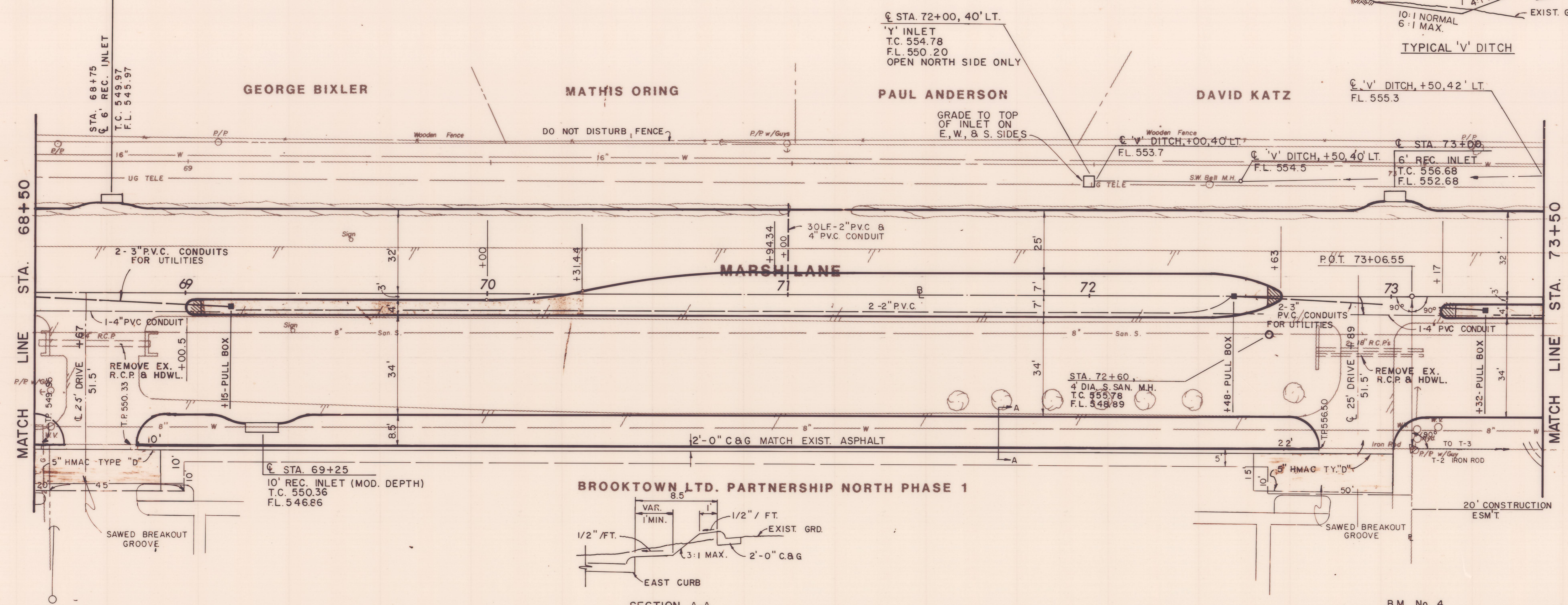
NO.	DATE	REVISION	APPROV.
4			
3			
2	5/82	AS PER ADDENDUM NO 2, ART 3.	
1	5/82	AS PER ADDENDUM NO 1, ART 7	

CITIES OF ADDISON AND FARMERS BRANCH, TEXAS
MARSH LANE
 BROOKHAVEN CLUB DRIVE TO BELT LINE ROAD
PAVING PLAN & PROFILE
 STA. 63+50 TO STA. 68+50

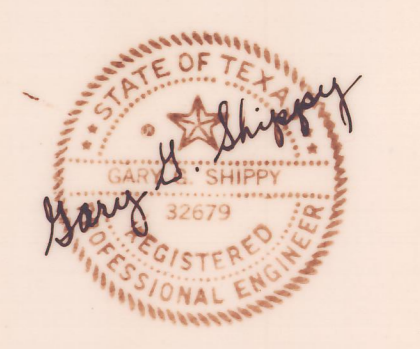
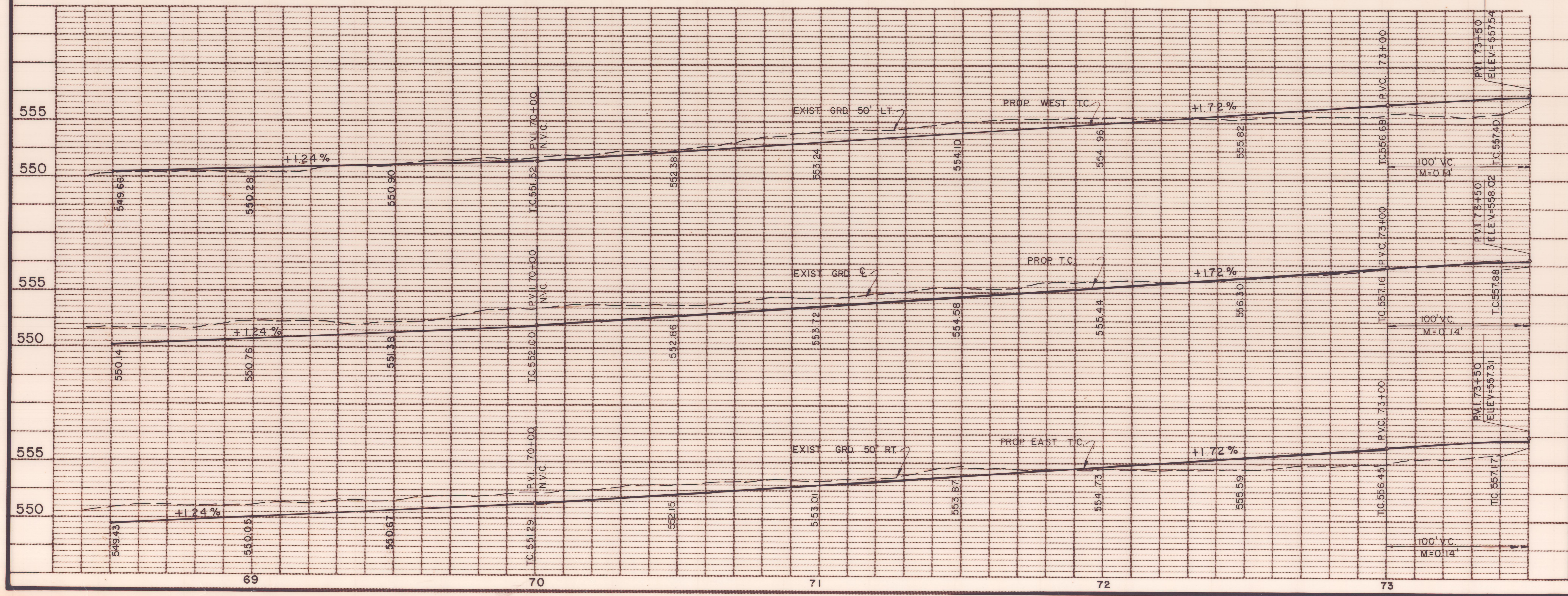
Unit	P.A.L.	Scale	Horz. 1" = 20' Vert. 1" = 5'	Date	FEB. 1982
Design	G.G.S.	Checked	G.G.S.	Job No.	6042-010 Contract
Drawn	L.J.K.	Approved	P.A.L.	Sheet	9 of 66



ITEM	DESCRIPTION	UNIT	QTY.
100	Preparing ROW	Sta	5.0
110&SP	Unc Road Excav	C.Y.	2,614
160&SP	Furn & Plac Topsoil	C.Y.	429
164&SP	Broadcast Seeding	S.Y.	940
260	Lime Treated Subgrade	S.Y.	3,965
264	Lime Slurry	Ton	64
310	Prime Coat (MC-30)	Gal	20
340&SP	HM&C (Cl A Ty D)	Ton	11
360&SP	8" Rein Conc Pavement	S.Y.	3,660
360&SP	6" Mono Curb	L.F.	1,741
496&SP	Rem Old Struc, Small	Each	3
522	Conc. Curb & Gutter	L.F.	397
524	6" Conc Driveway	S.Y.	70
590	4" Conc Median	S.Y.	6
640&SP	Full Boxes	Each	3
640&SP	Conduit, 4"	L.F.	196
640&SP	Conduit, 3"	L.F.	332
640&SP	Conduit, 2"	L.F.	696
752&SP	Pavement Markers	Each	39
752&SP	Traffic Bar. Buttons	Each	13
754&SP	Traffic Buttons	Each	192
SS-14	Sanitary Sewer Manhole	Each	1



B.M. No. 4
 R.R. SPIKE EAST FACE TRANSFORMER
 POLE 50' WEST MARSH LANE
 APPROX. 75+75
 ELEV. 559.72

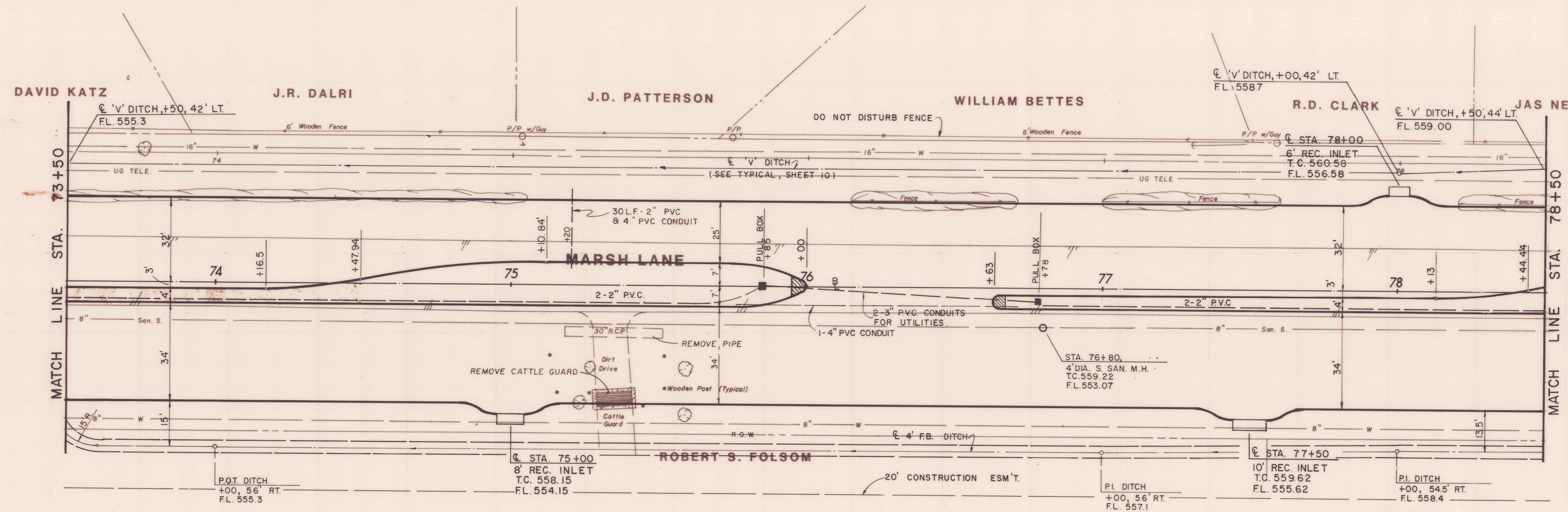


AS BUILTS 11-22-83

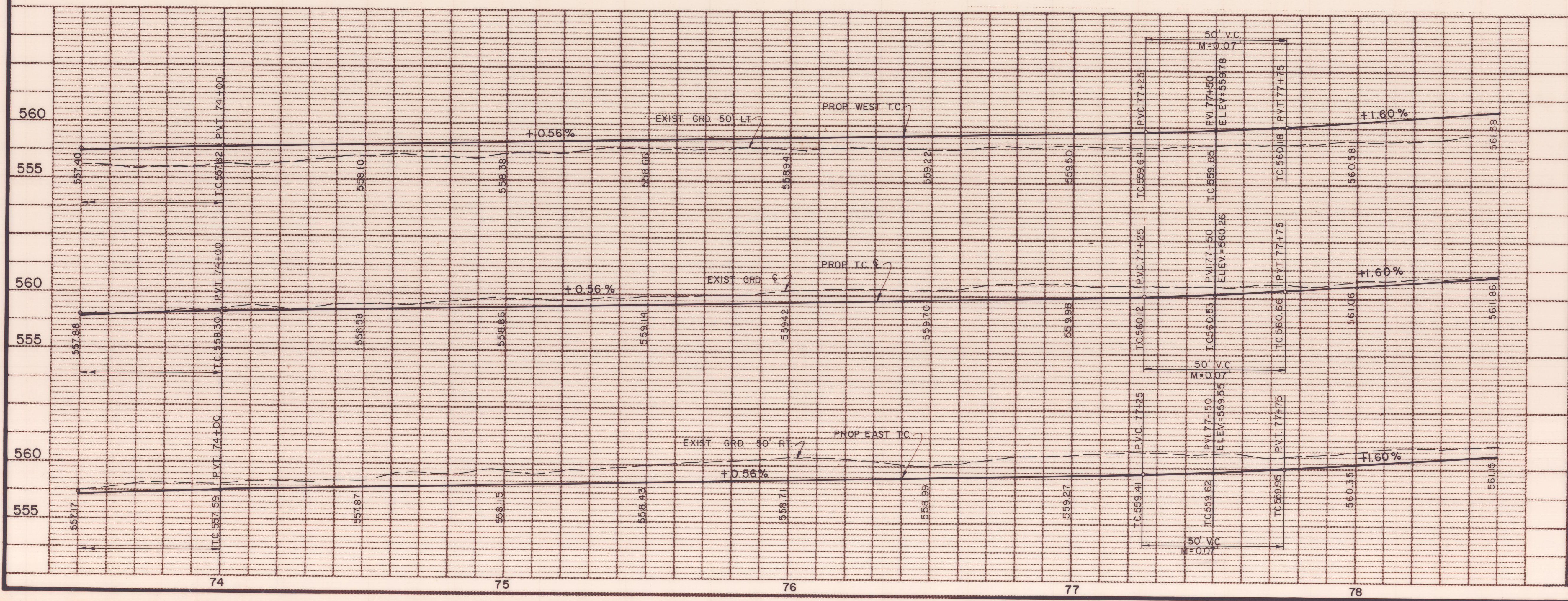
4			
3			
2			
1	5/82	AS PER ADDENDUM No 2, ART 3.	
NO.	DATE	REVISION	APPROV.
CITIES OF ADDISON AND FARMERS BRANCH, TEXAS MARSH LANE BROOKHAVEN CLUB DRIVE TO BELT LINE ROAD PAVING PLAN & PROFILE STA. 68+50 TO STA. 73+50 Turner Collie & Braden Inc.			
Unit	PAL	Scale: Horz. 1" = 20' Vert. 1" = 5'	Date FEB. 1982
Designed	GGG	Checked	GGG
Drawn	LJK	Approved	PAL
		Job No. 6042-010	Contract
		Sheet 10	of 66



ITEM	DESCRIPTION	UNIT	QTY.
100	Preparing ROW	Sta	5.0
110&SP	Unclass Road Excav	C.Y.	3,816
160&SP	Furn & Placing Topsoil	C.Y.	595
164&SP	Broadcast Seeding	S.Y.	1,830
260	Line Treated Subgrade	S.Y.	4,065
264	Line Slurry	Ton	66
360&SP	8" Reinf Conc Pmnt	S.Y.	3,730
360&SP	6" Mono Curb	L.F.	1,854
496&SP	Remove Old Struc, Small	Each	1
590	4" Conc Median	S.Y.	4
640&SP	Pull Boxes	Each	2
640&SP	Conduit, 4"	L.F.	123
640&SP	Conduit, 3"	L.F.	186
640&SP	Conduit, 2"	L.F.	1,610
752&SP	Pavement Markers	Each	39
752&SP	Traffic Bar Buttons	Each	22
754&SP	Traffic Button	Each	192
SS-14	Sanitary Sewer Manhole	Each	1

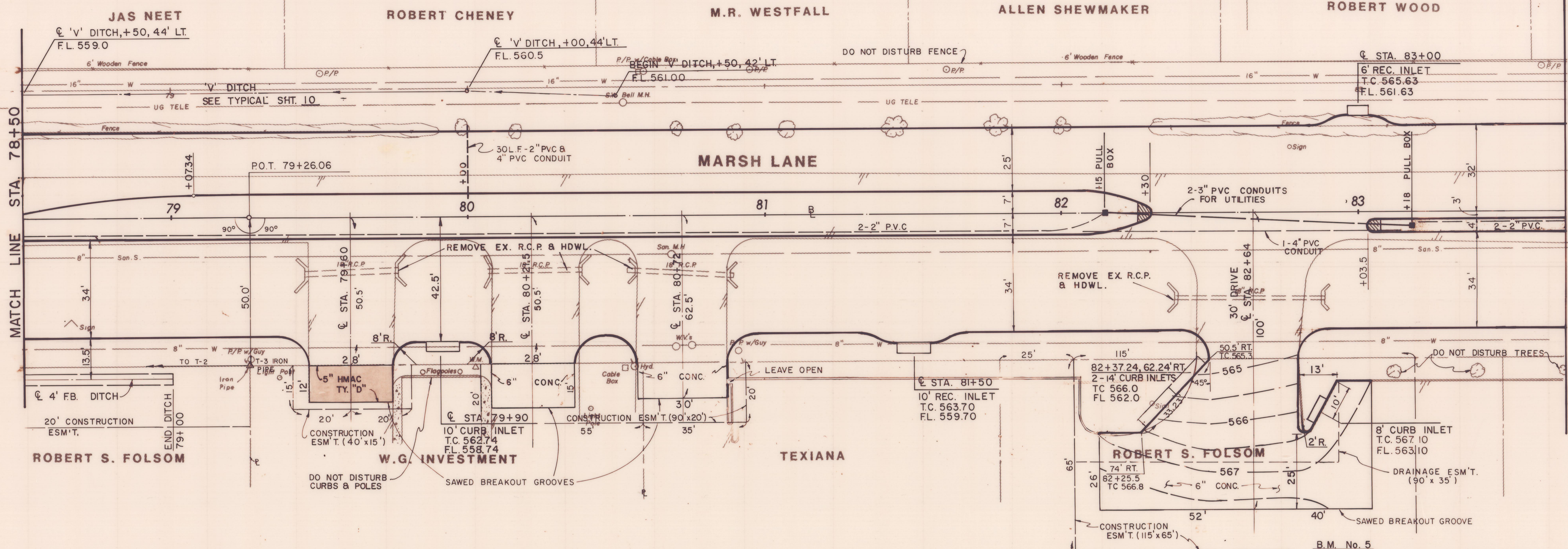


B.M. No. 4
 R.R. SPIKE EAST FACE TRANSFORMER
 POLE 50' WEST MARSH LANE
 APPROX. 75+75
 ELEV. 559.72

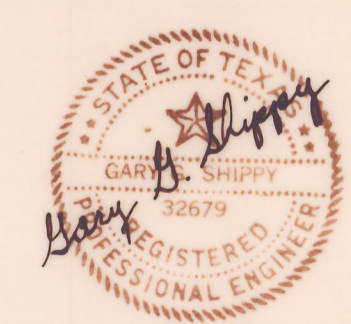
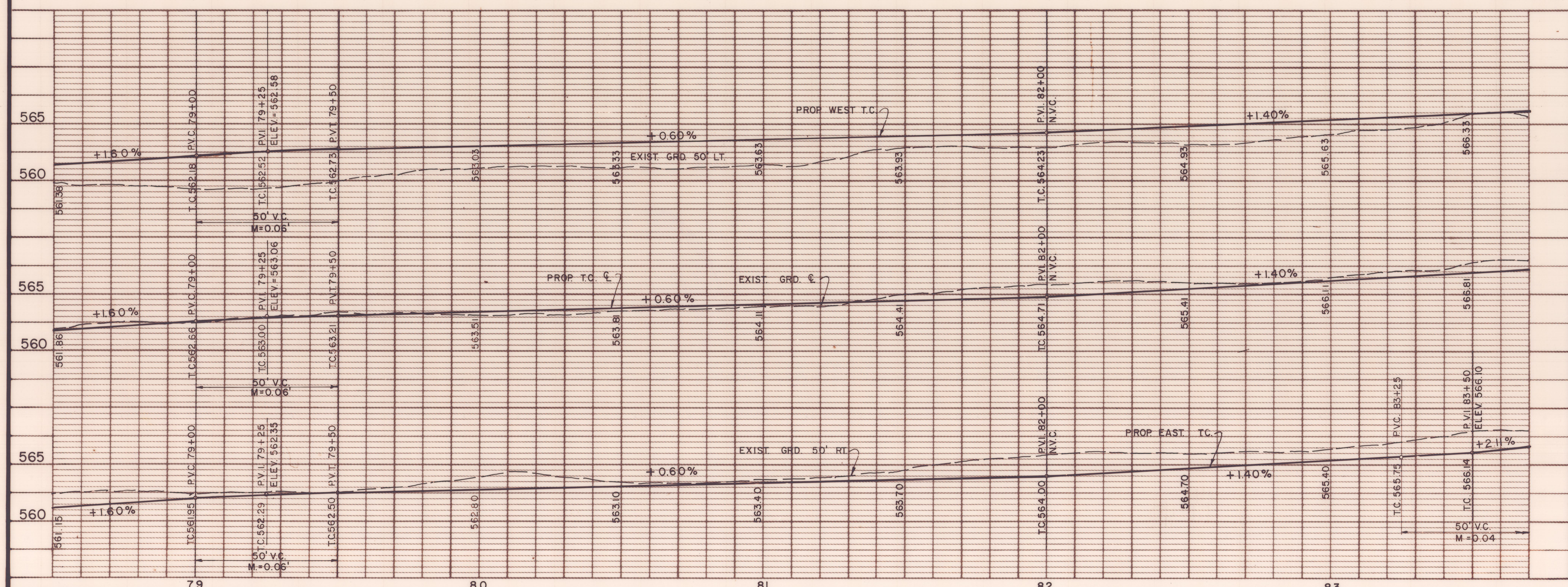


AS BUILTS 11-22-83

4			
3			
2			
1	5/82	AS PER ADDENDUM No 2, ART. 3.	
NO.	DATE	REVISION	APPROV.
CITIES OF ADDISON AND FARMERS BRANCH, TEXAS MARSH LANE BROOKHAVEN CLUB DRIVE TO BELT LINE ROAD PAVING PLAN & PROFILE STA. 73+50 TO STA. 78+50 Turner Collier & Braden Inc.			
Unit	PAL	Scale: Horz. 1" = 20' Vert. 1" = 5'	Date FEB. 1982
Designed	GGG	Checked GGG	Job No. 6042-010 Contract
Drawn	LJK	Approved PAL	Sheet II of 66



ITEM	DESCRIPTION	UNIT	QTY.
100	Preparing ROW	Sta	5.2
1046SP	Remove Old Con (Pvnt)	S.Y.	330
1106SP	Unclass Road Excav	C.Y.	2,746
1606SP	Furn & Plac Topsoil	C.Y.	571
1646SP	Broadcast Seeding	S.Y.	2,100
260	Lime Treated Subgrade	S.Y.	3,955
264	Lime Slurry	Ton	64
310	Prime Coat (MC-30)	Gal	21
3406SP	HMAC (Cl A Type D)	Ton	23
3606SP	8" Reinf Conc Pavment	S.Y.	3,625
3606SP	6" Mono Curb	L.F.	1,927
4966SP	Remove Old Struc, Small	Each	8
522	Conc Curb & Gutter	L.F.	20
524	6" Conc Driveways	S.Y.	583
590	4" Conc Median	S.Y.	4
6406SP	Pull Boxes	Each	2
6406SP	Conduit, 4"	L.F.	133
6406SP	Conduit, 3"	L.F.	206
6406SP	Conduit, 2"	L.F.	39
7526SP	Pavement Markers	Each	39
7526SP	Traffic Bar Buttons	Each	7
7546SP	Traffic Buttons	Each	195



AS BUILTS 11-22-83

4			
3			
2			
1	5/82	AS PER ADDENDUM # 2, ART. 3.	
NO.	DATE	REVISION	APPROV.
CITIES OF ADDISON AND FARMERS BRANCH, TEXAS MARSH LANE BROOKHAVEN CLUB DRIVE TO BELT LINE ROAD PAVING PLAN & PROFILE STA. 78+50 TO STA. 83+70 Turner Collier & Braden Inc.			
UNIT	PAL	Scale: Horiz. 1"=20' Vert. 1"=5'	Date FEB. 1982
DESIGNED	GGG	CHECKED	GGG
DRAWN	LJK	APPROVED	PAL
Job No. 6042-010		Sheet 12 of 66	