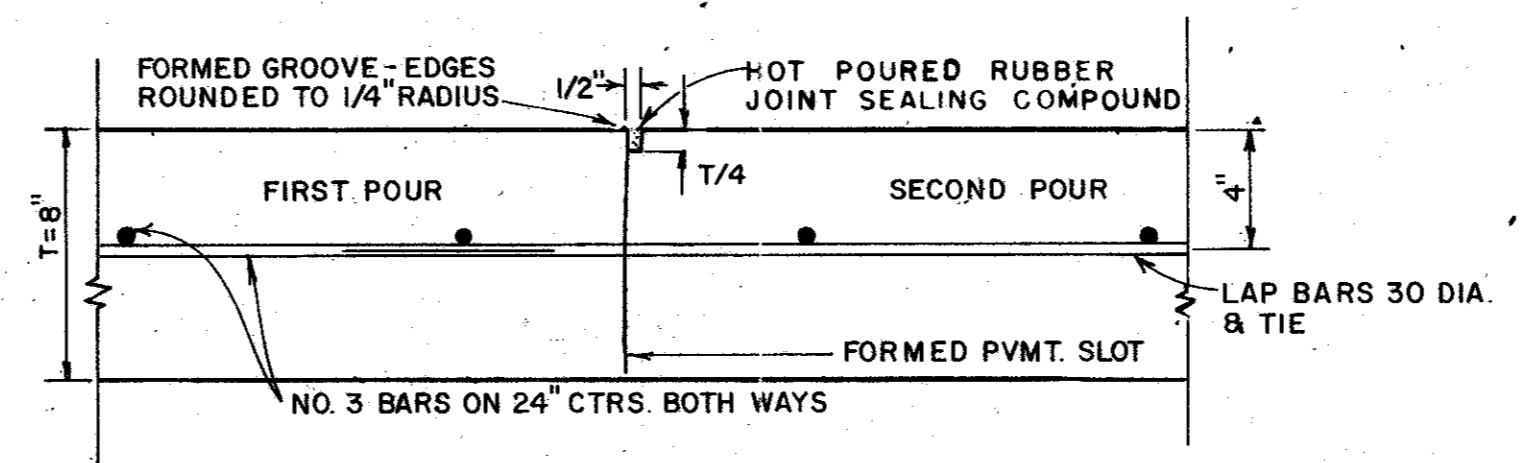


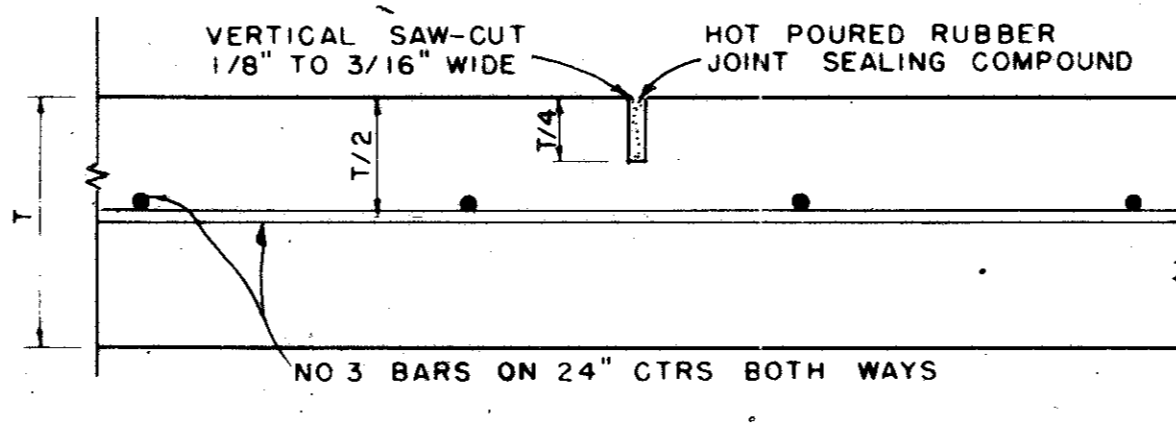
CONSTRUCTION JOINT OR SAWED LONGITUDINAL DUMMY JOINT ALONG C.L. OF ALL SINGLE ROADWAY SECTIONS EXCEPT 20' ROADWAY.
 ADDITIONAL SIMILAR JOINT 10'-0" EACH SIDE C.L. FOR 56' & 60' ROADWAY SECTIONS.

SPACING DIAGRAM FOR JOINTS

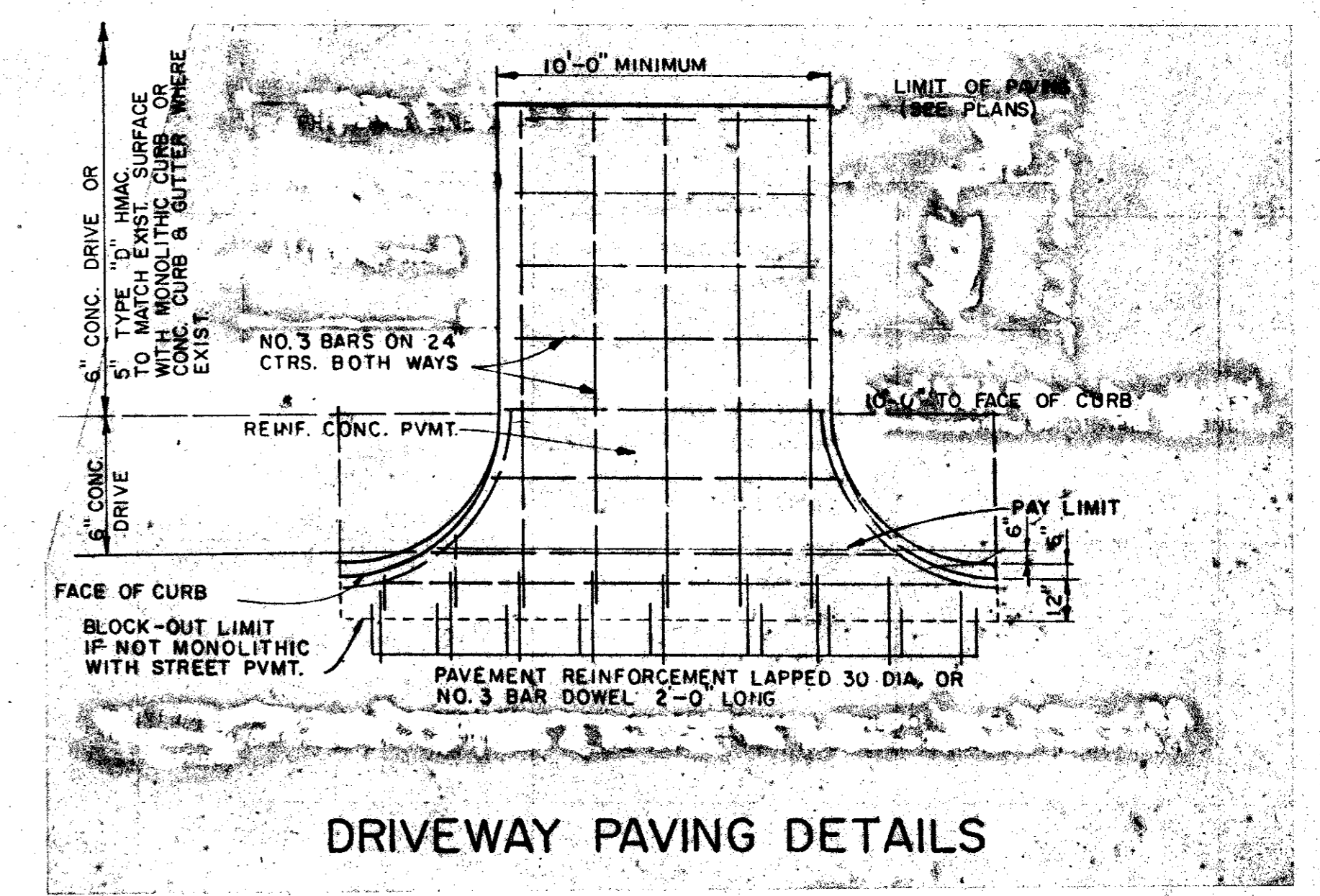
IDENTICAL FOR STREETS (CONCRETE PAVEMENT OR BASE) AND ALLEYS EXCEPT THAT EXPANSION JOINTS FOR ALLEYS SHALL BE PLACED AT THE END OF THE RETURN IN LINE WITH THE PROPERTY LINE. SPACING OF EXPANSION JOINTS SHALL BE AS SHOWN AT INTERSECTIONS AND AT THE LAST JOINT BEFORE CONSTRUCTION JOINT AT THE END OF DAYS PAVING POUR. LEFT TURN LANES TO BE PAVED FROM THE NOSE TO A PAVING WIDTH OF 18' AT END OF REVERSE CURVE. SPACING OF EXPANSION JOINTS SHALL NOT EXCEED 500 FEET.



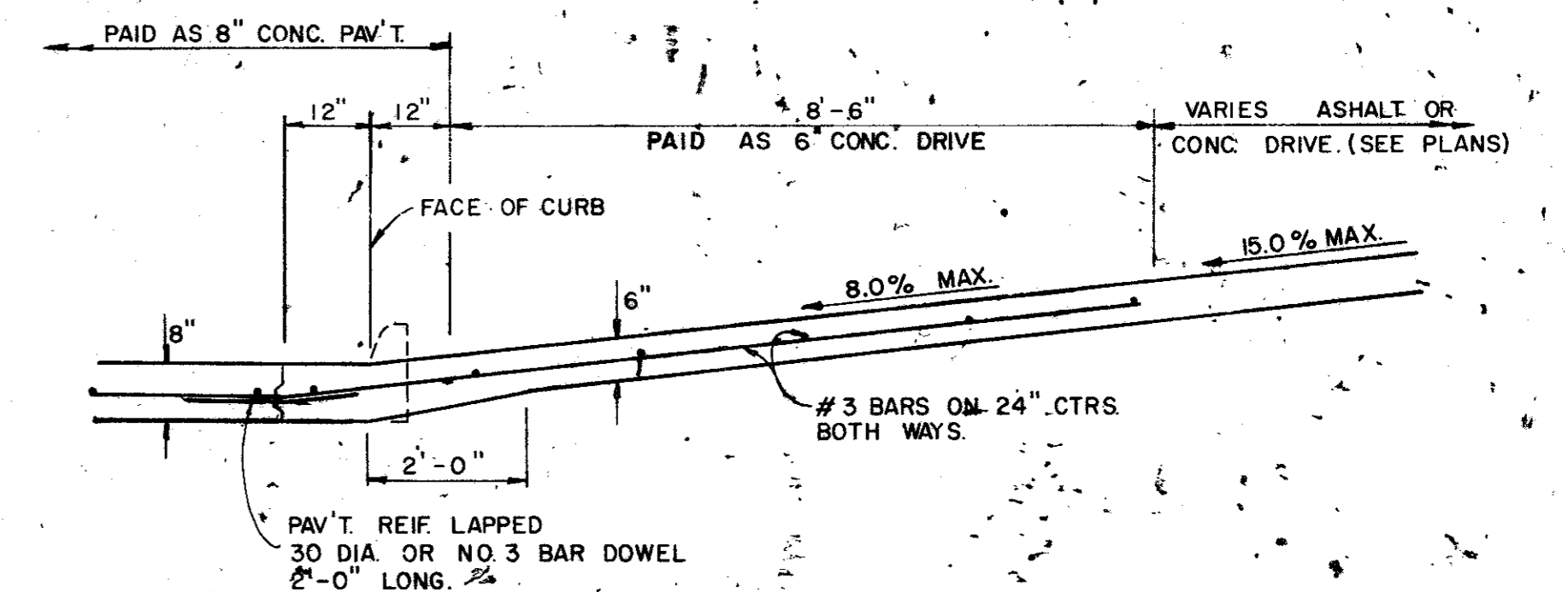
CONSTRUCTION JOINT
 FOR 8" PAVEMENT THICKNESS



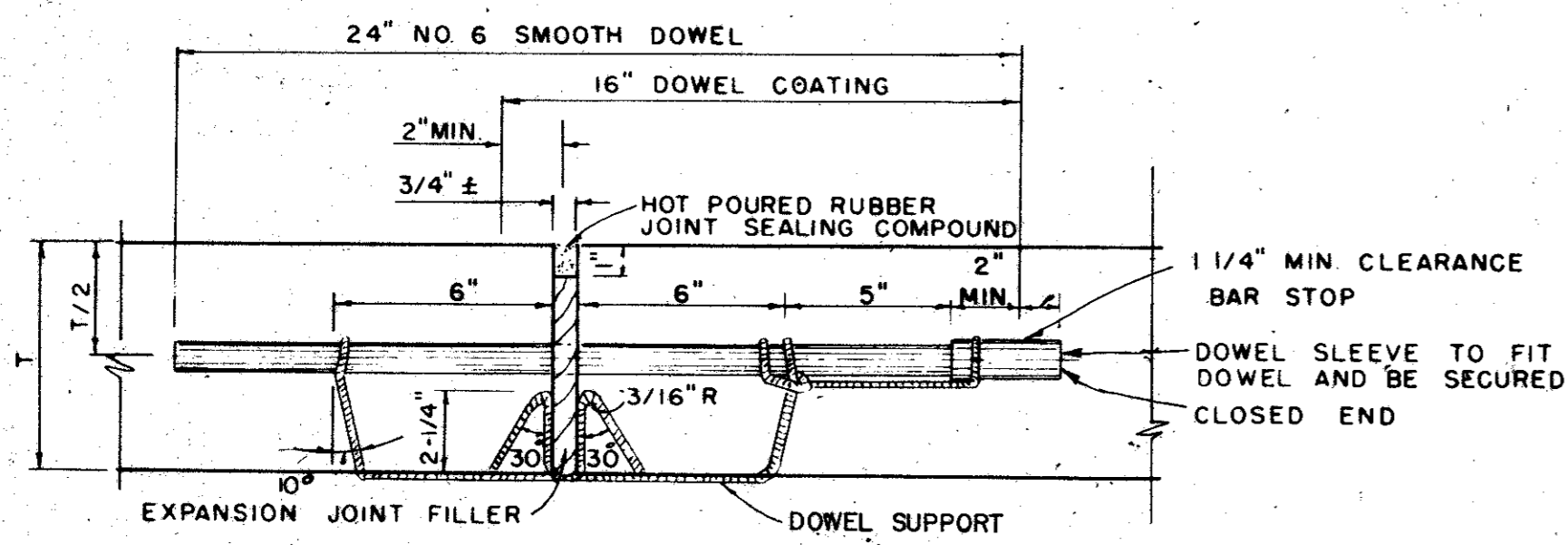
SAWED DUMMY JOINT



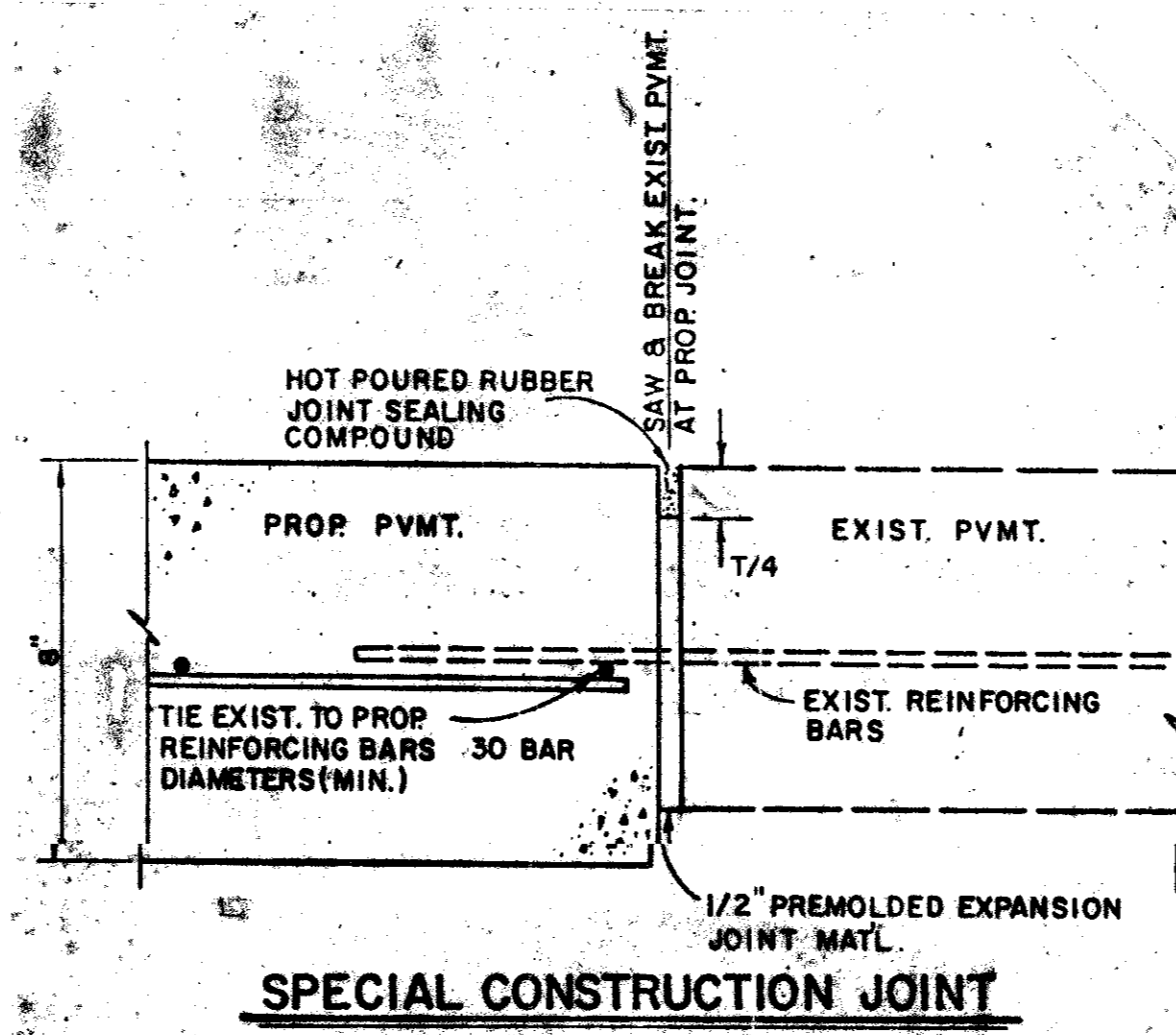
DRIVEWAY PAVING DETAILS



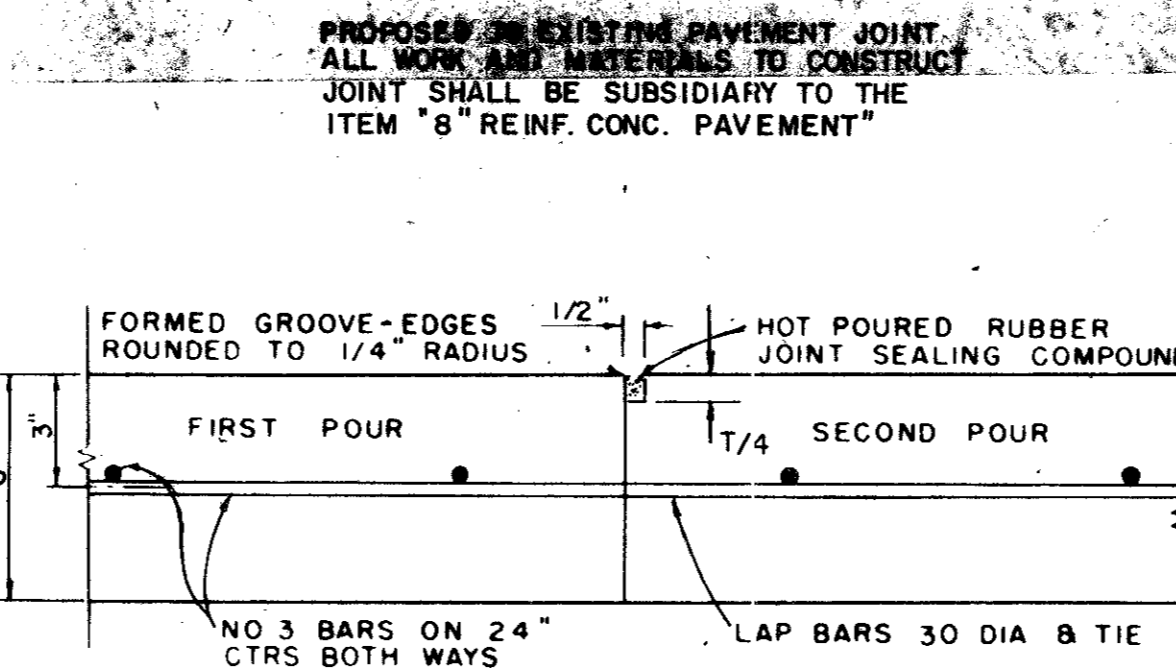
DRIVEWAY SECTION



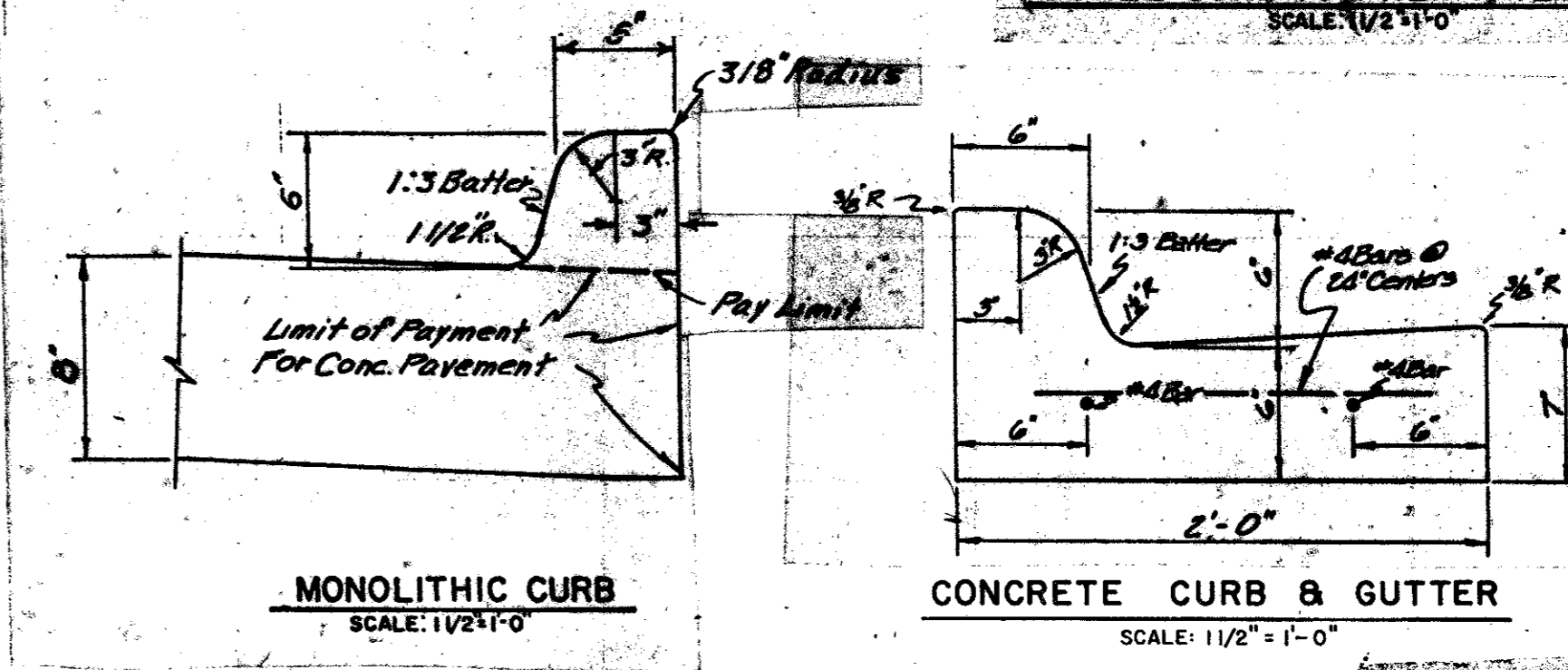
TRANSVERSE EXPANSION JOINT
 IDENTICAL FOR STREETS & ALLEYS



SPECIAL CONSTRUCTION JOINT



CONSTRUCTION JOINT
 FOR 6" THICKNESS PAVEMENT OR BASE



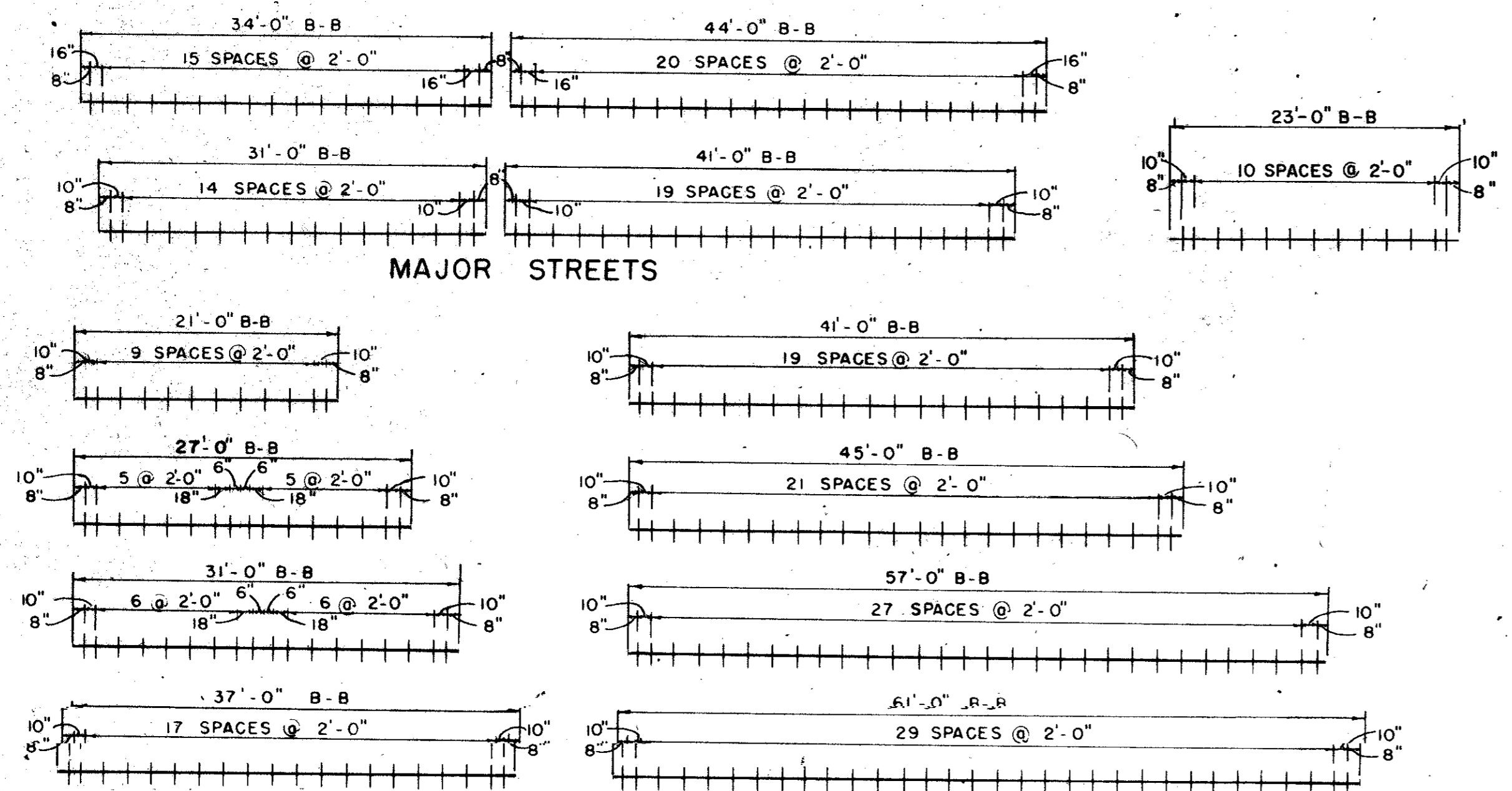
MONOLITHIC CURB AND GUTTER

MONOLITHIC CURB
 SCALE: 1/2" = 1'-0"

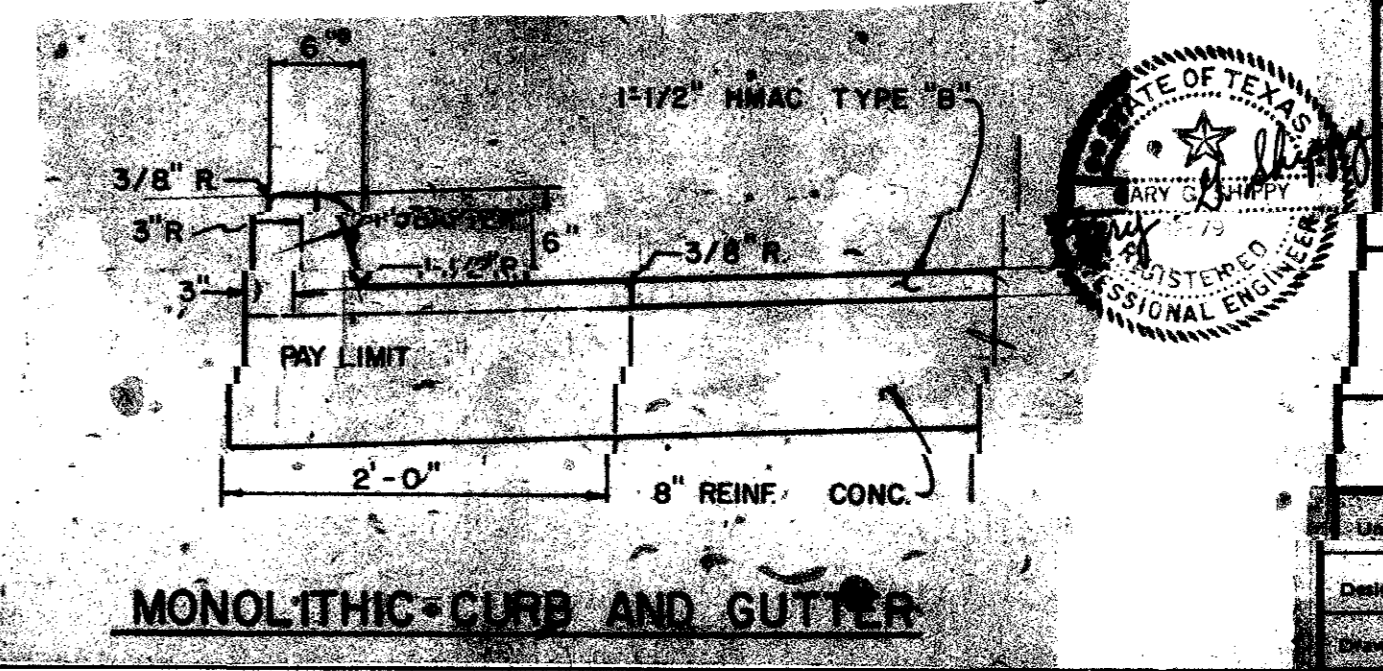
CONCRETE CURB & GUTTER
 SCALE: 1/2" = 1'-0"

NOTE:
 Provide grooved joints at 10' centers and 30' expansion material at a maximum of 50' centers & radius points. Joints shall be subsidiary to them. SEE Concrete Curb & Gutter.

AS BUILTS 11-22-83



SPACING DIAGRAM FOR DOWELS AT EXPANSION JOINTS



MONOLITHIC CURB AND GUTTER

CITIES OF ADDISON AND FARMERS BRANCH, TEXAS

MARSH LANE
 BROOKHAVEN CLUB DRIVE TO JEFFERSON ROAD

PAVING DETAILS

Turner-Collie & Braden, Inc.

DATE: FEB. 1983
 DRAWN: GGS
 CHECKED: LJK
 APPROVED: PAL