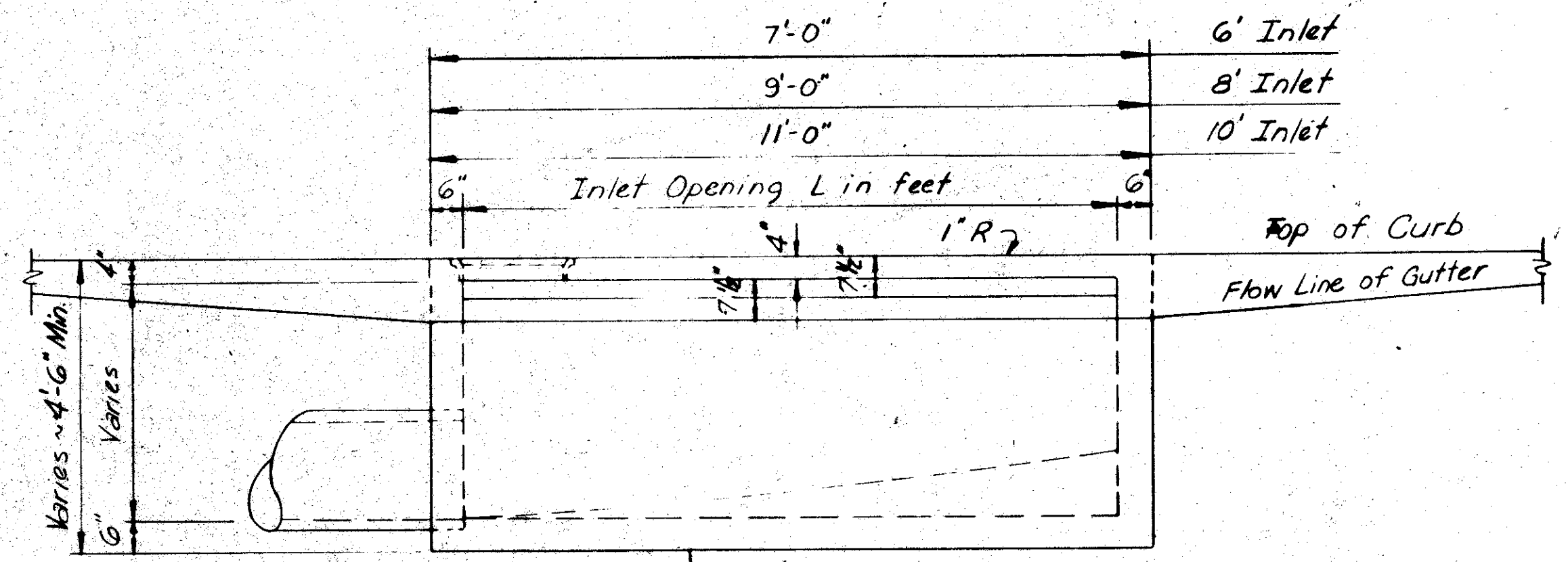
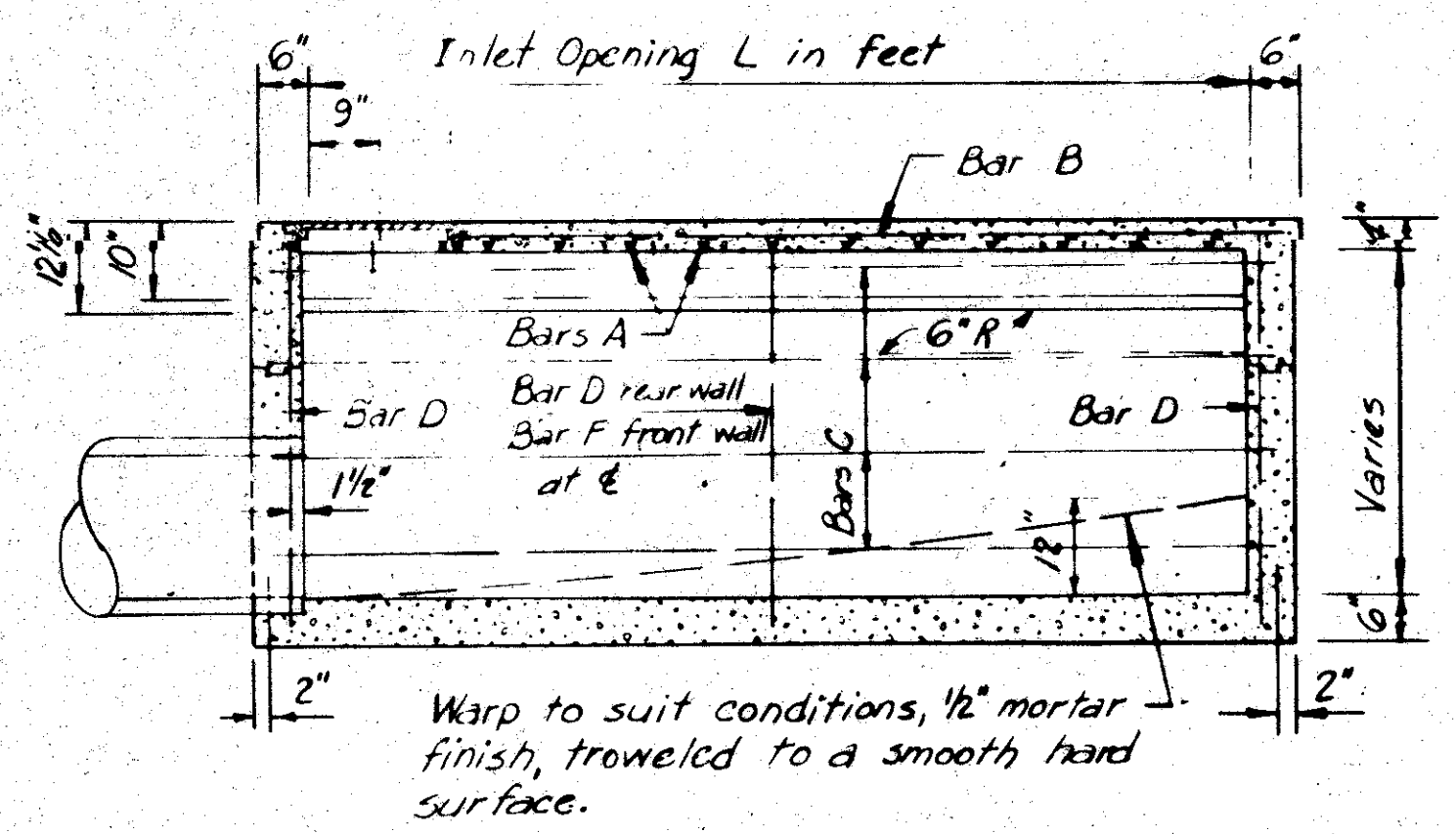


PLAN

Corrections in paving vary for each inlet. The limits of removing and replacing will be determined by the Engineer and will be measured and paid for at the contract price bid per S.Y.

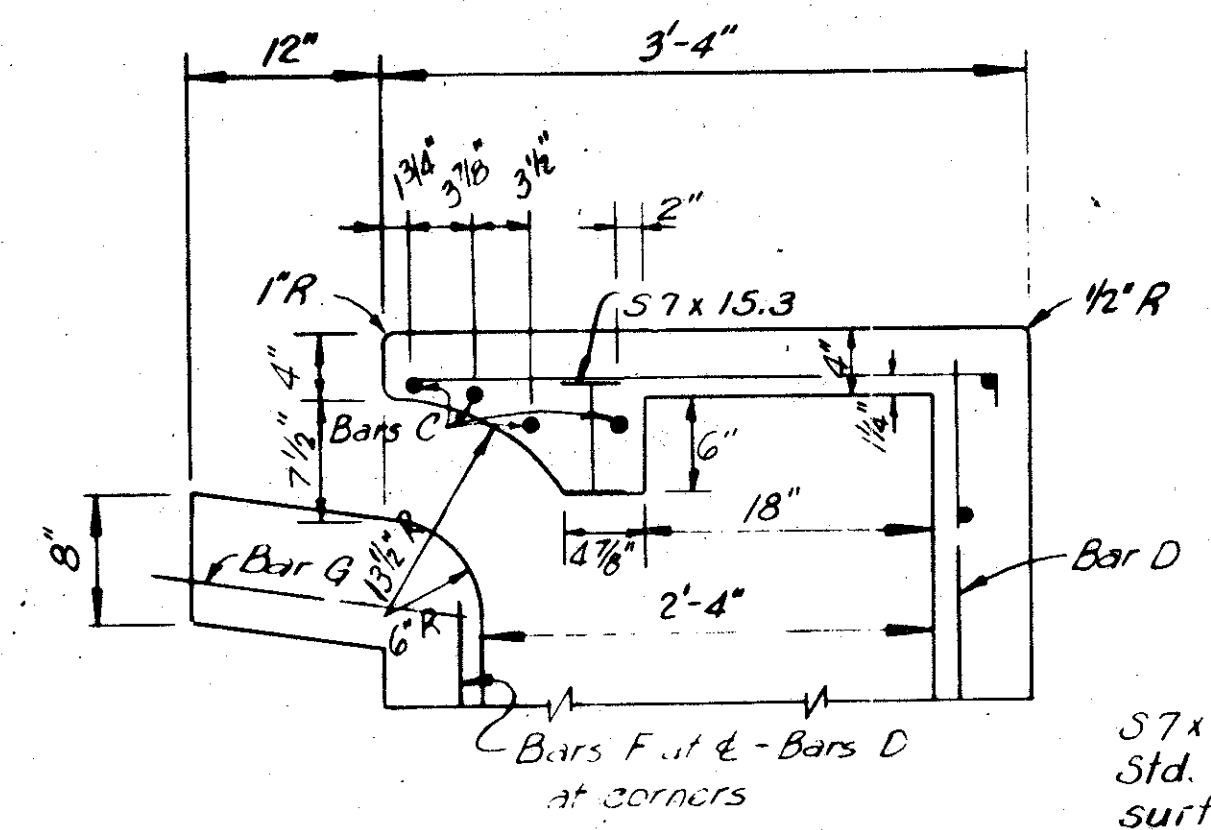


SECTION A-A

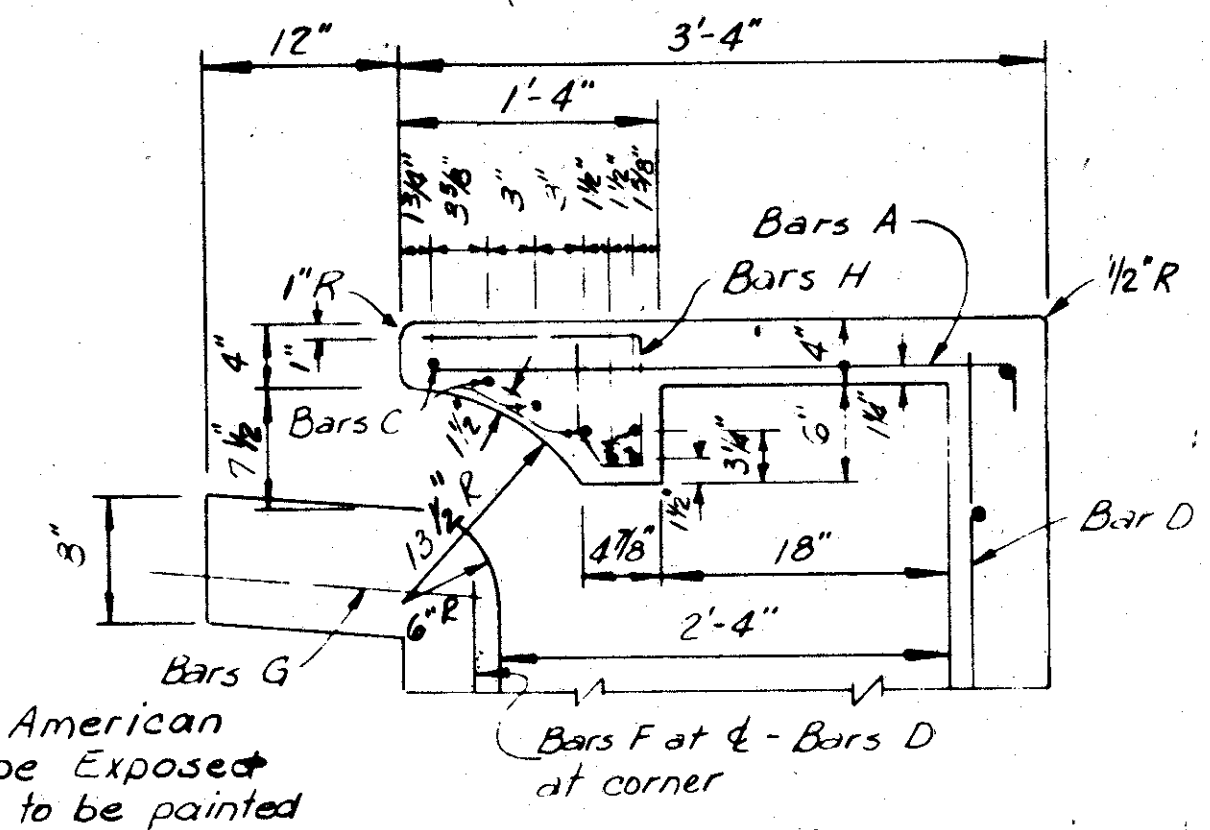


SECTION B-B

Warp to suit conditions, 1/2" mortar finish, troweled to a smooth hard surface.

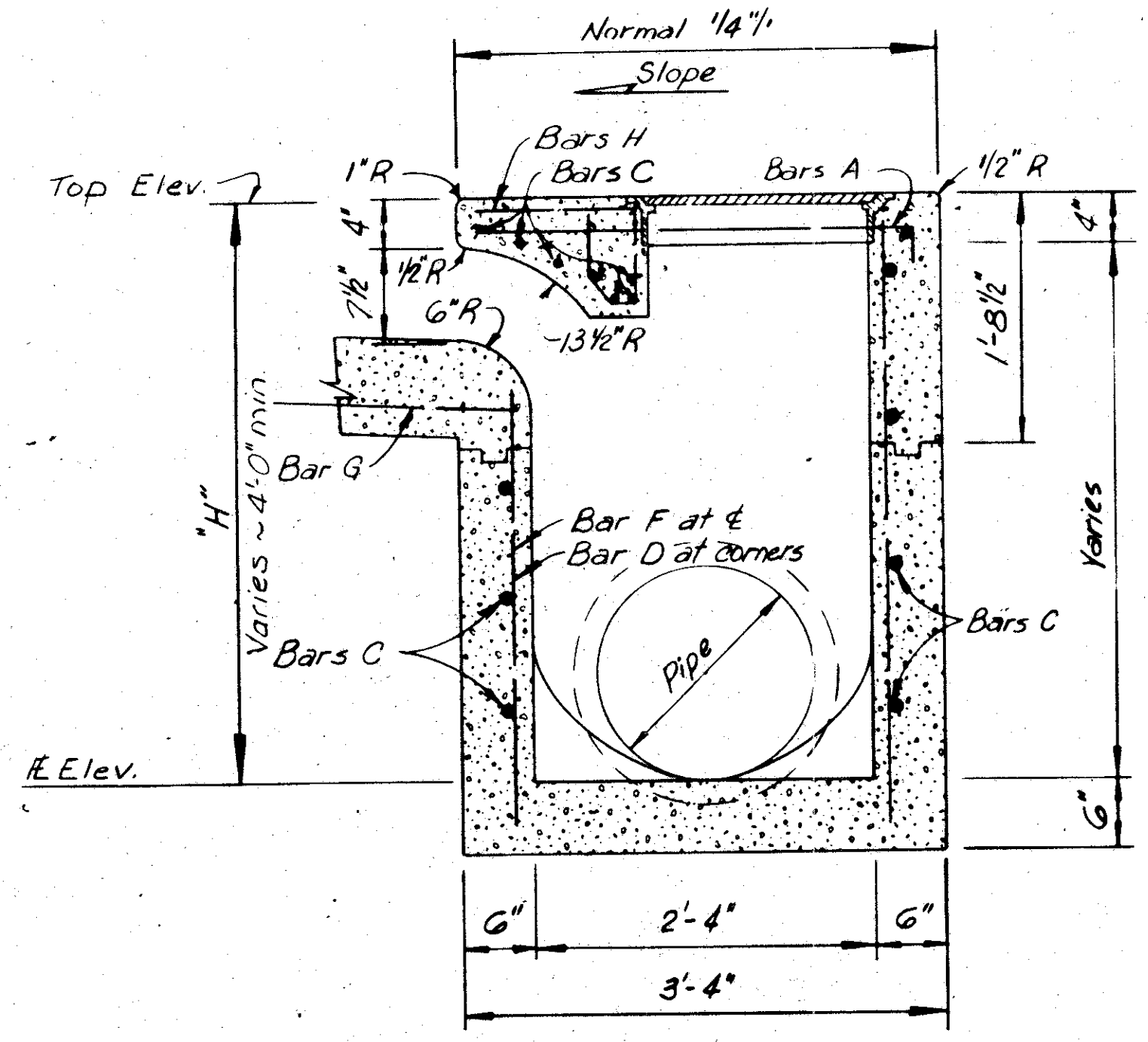


SECTION D-D FOR STANDARD INLETS

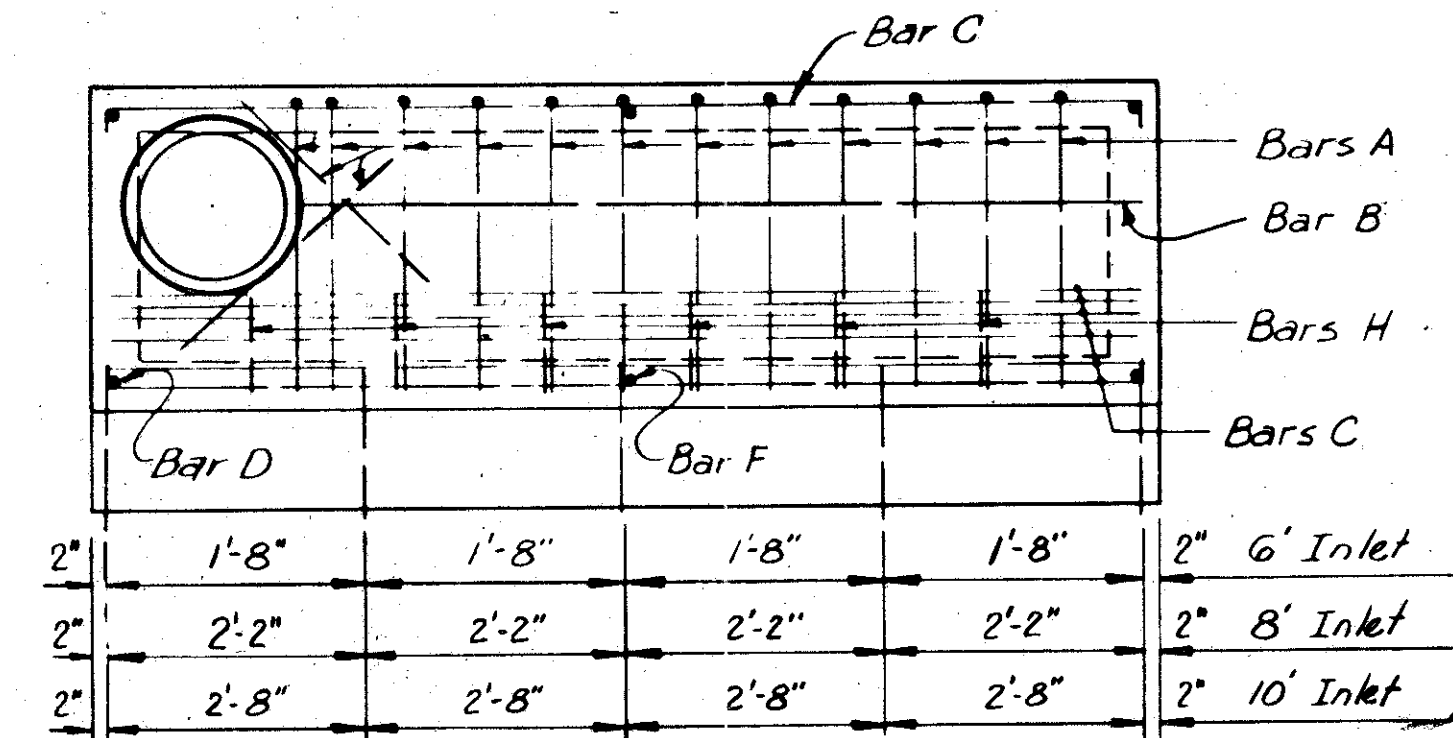


ALTERNATE SECTION D-D SEE STD. SEC. D-D AT LEFT

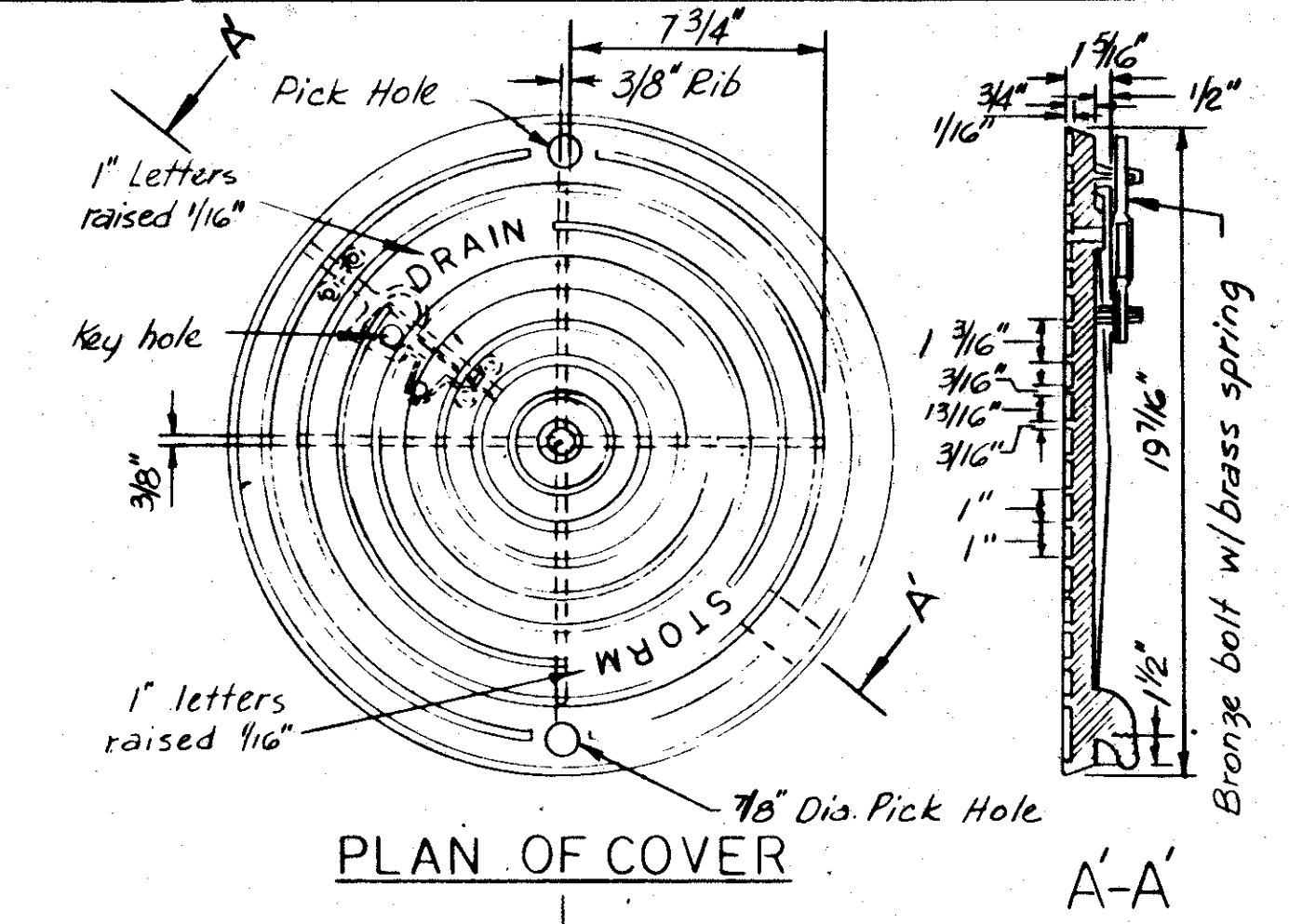
5/8 x 15.3 American Std. shape Exposed surfaces to be painted in accordance with Item 446 Protection system I-Gray



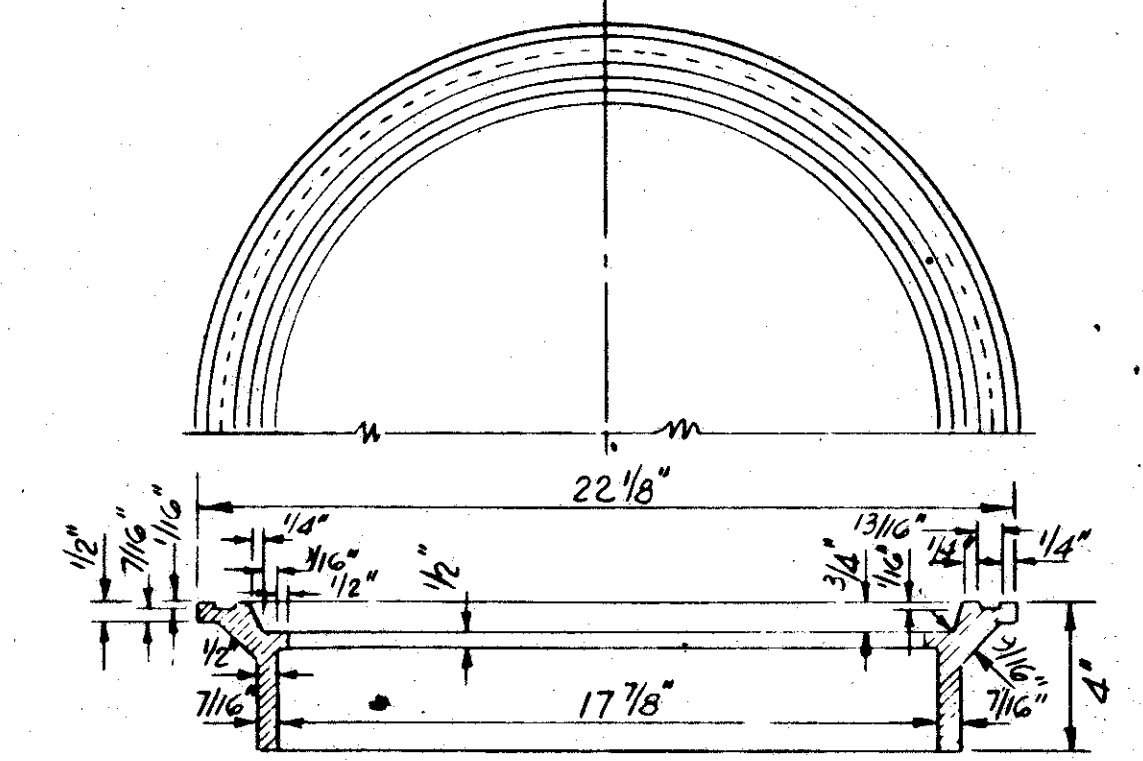
SECTION C-C



REINFORCING PLAN ALTERNATE



PLAN OF COVER



SECTION OF FRAME INLET FRAME AND COVER TYPE II

GENERAL NOTES:

All concrete shall be Class A. Lateral pipe may enter inlet at any location. The 12" gutter in front of inlet is a part of the inlet and shall be built with the inlet. Top of inlet slope shall conform to adjacent parkway normal 1/4" slope. Payment of curb inlet as shown on the plans will be made at the unit price bid for 6 ft., 8 ft., 10 ft., 14 ft. or 20 ft. standard curb inlet complete in place.

Dimensions relating to reinforcing steel are to centers of bar. Monolithic curb will not be paid for through the inlet.

Reinforcing steel will be ASTM A-615, Grade 60. All exposed corners shall be chamfered 3/4". Inlet steps spaced at 14" c.c. and located as directed by the Engineer, shall be provided and installed in all inlets where the depth exceeds 5'-0".

CITIES OF ADDISON AND FARMERS BRANCH, TEXAS			
MARSH LANE			
BROOKHAVEN CLUB DRIVE TO BELT LINE ROAD			
CURB INLET DETAILS			
6', 8', 10', & 20' INLETS			
Turner Collier & Braden Inc.			
Unit	SDHPT	Scale: Horiz. Vert.	Date FEB., 1982
Designed	Checked	Job No. 6042-010	Contract
Drawn	Approved	Sheet 49	of 66