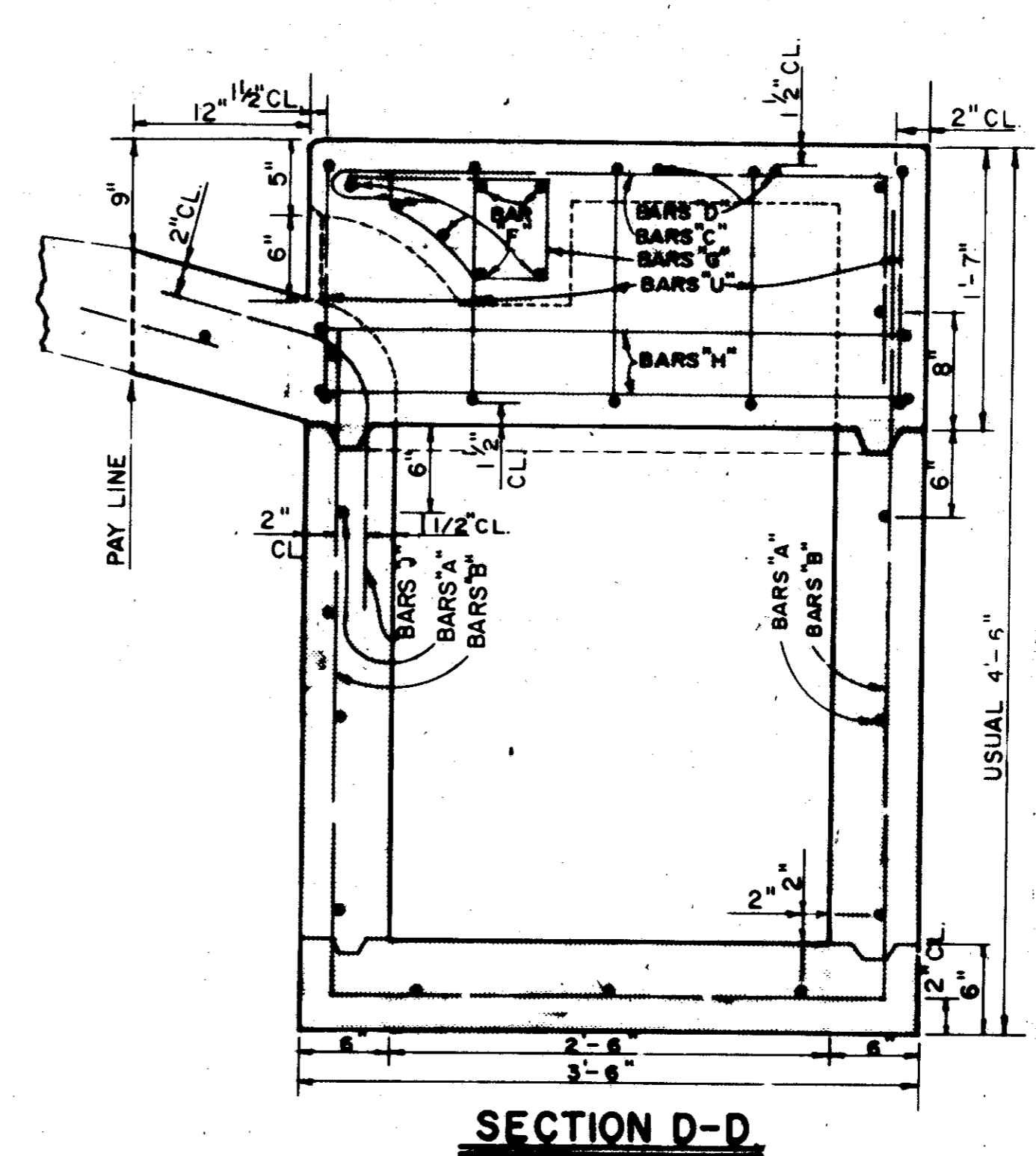
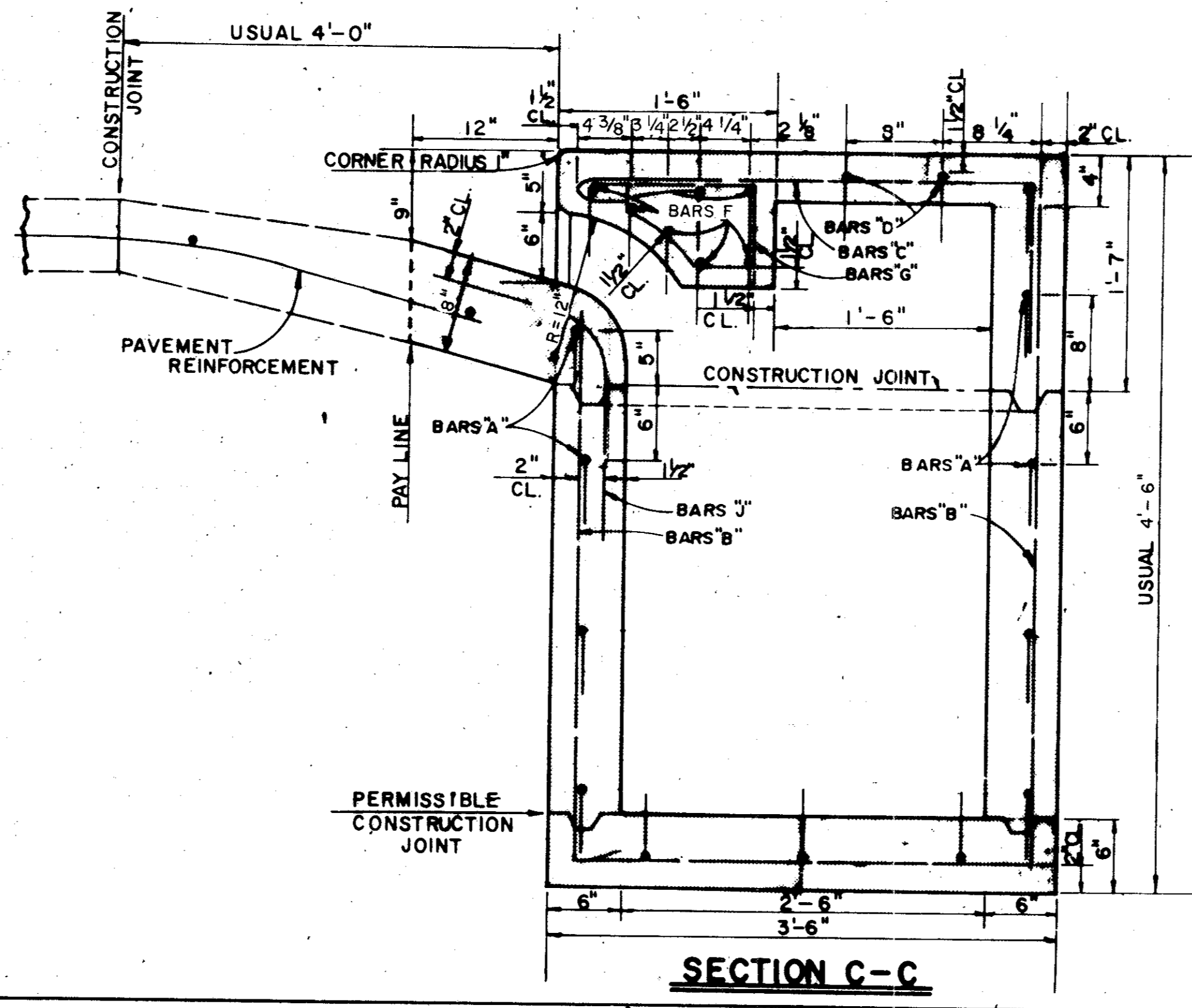
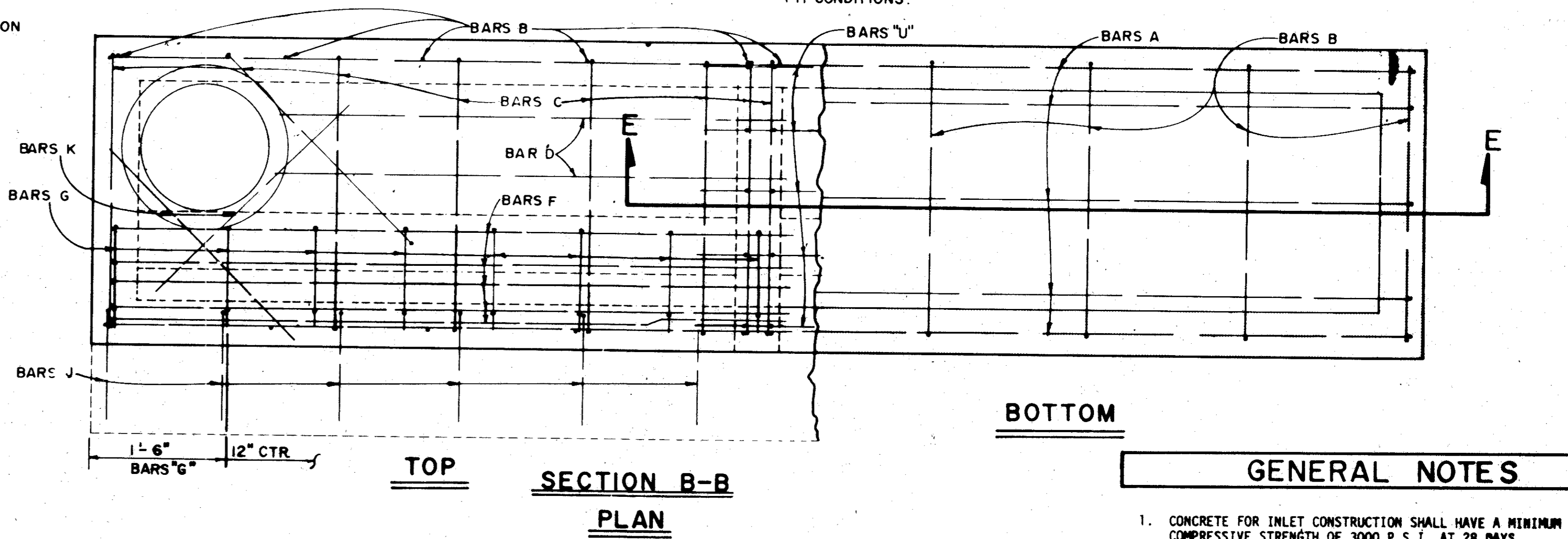
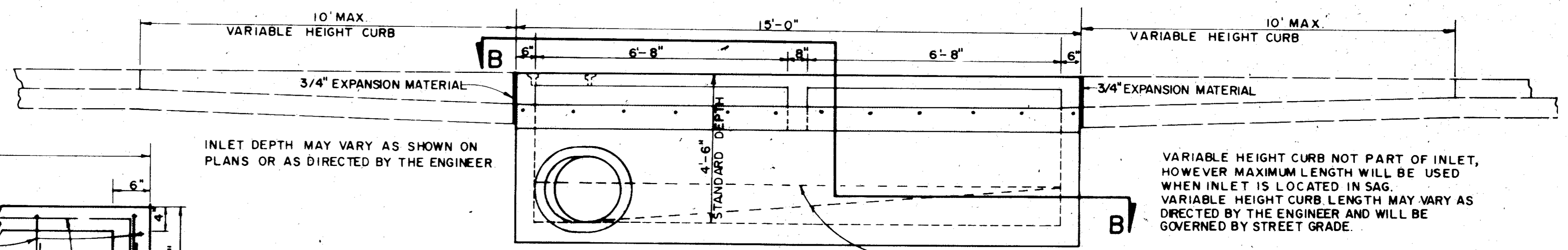
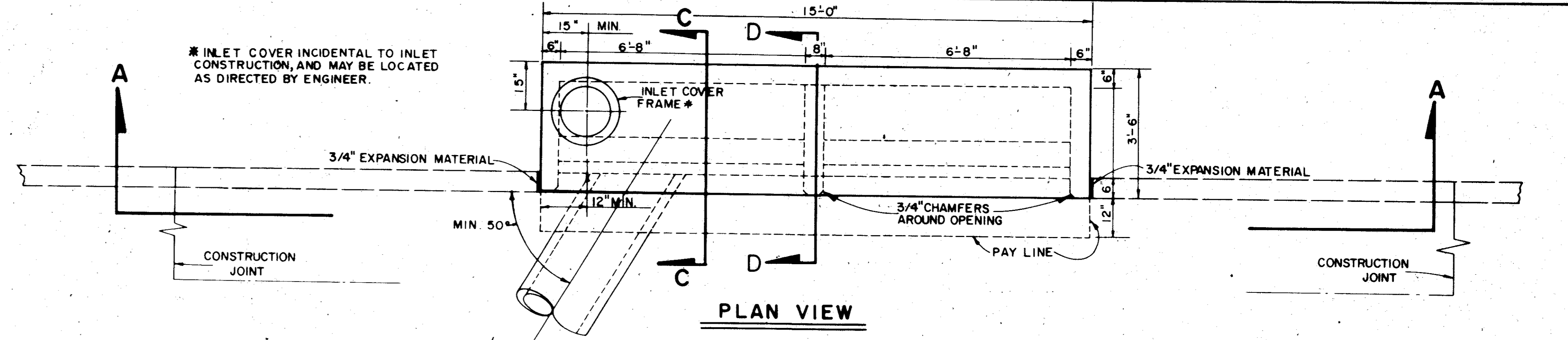
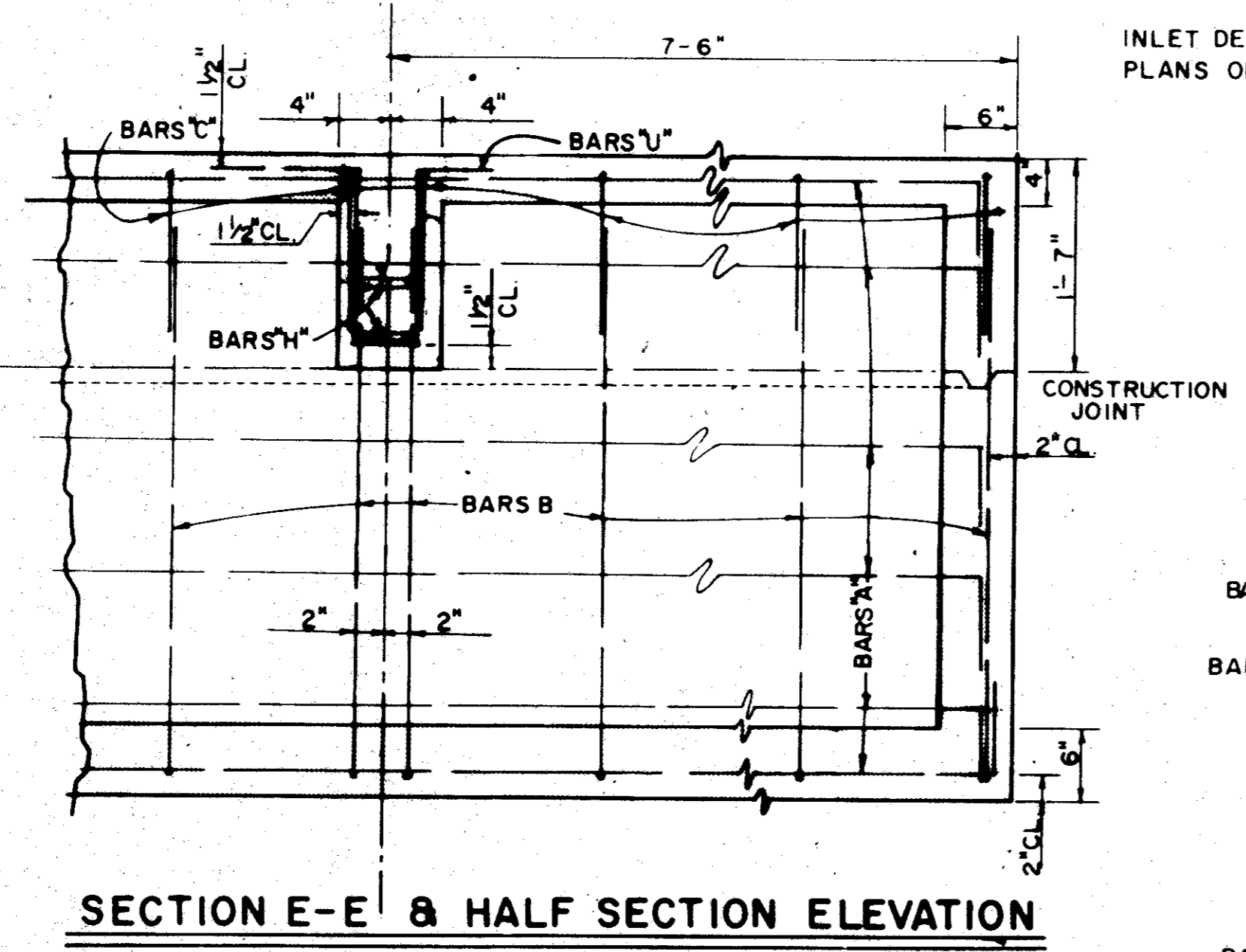
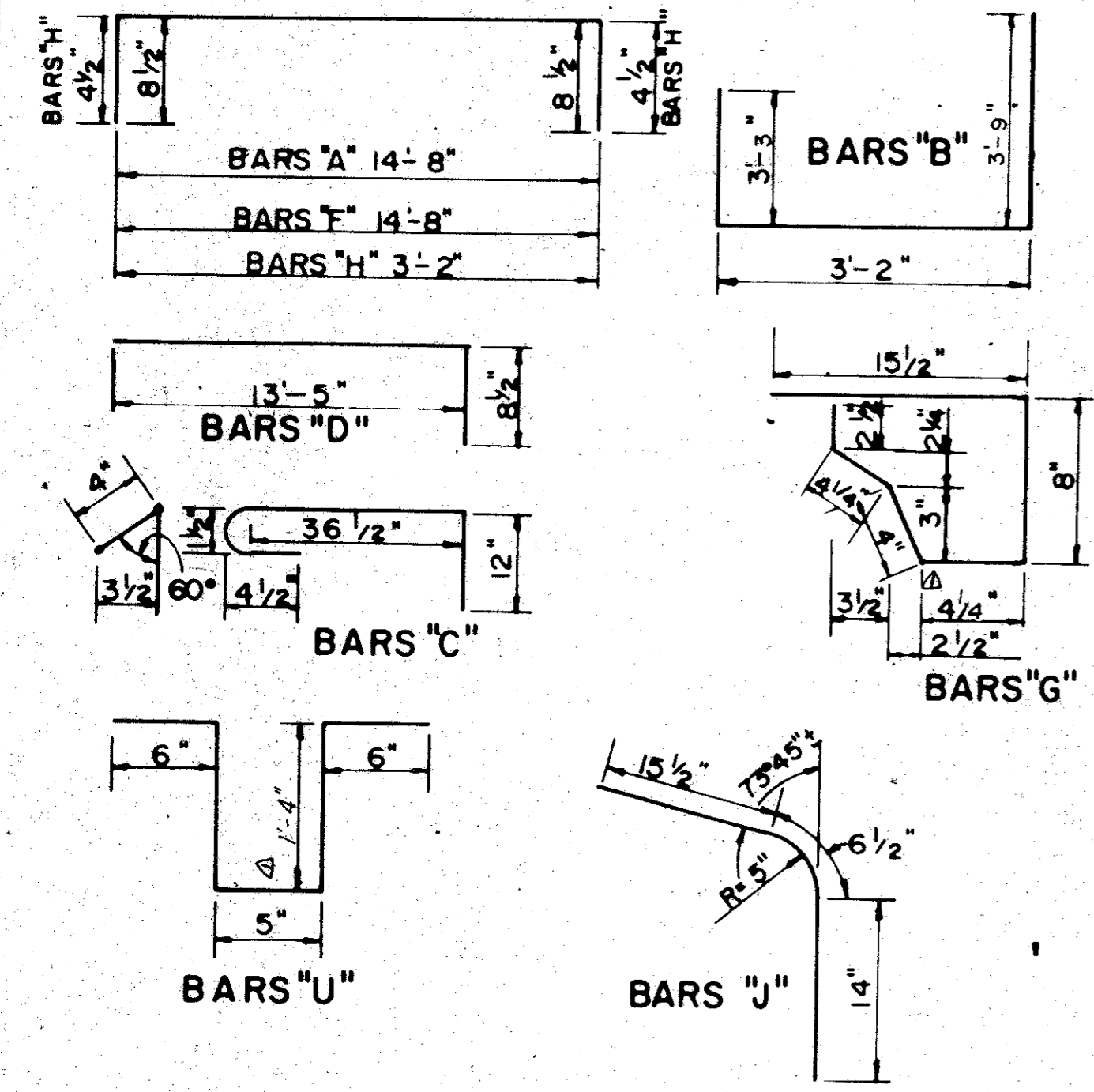


STEEL SCHEDULE FOR 14-FOOT INLETS						
BAR CODE	NO. REQ'D	BAR SIZE	LENGTH	SPACE	WEIGHT (LBS.)	DESCRIPTION AND REMARKS
A	12	4	16'-1"	*	129	SEE DETAILS *HALLS 9" CTR. *NOTION 12" CTR.
B	10	4	10'-2"	21 1/4"	68	SEE DETAILS SEE SECTION "EE"
C	14	4	4'-6 1/2"	18"	45	SEE DETAILS SEE SECTION "BB"
D	2	4	4'-1 1/2"	8"	19	SEE DETAILS
F	7	4	16'-1"	*	75	SEE DETAILS *SEE SECTION "CC"
G	15	3	3'-2 1/2"	12"	21	SEE DETAILS *SEE SECTION "BB"
H	4	4	3'-11"	4 1/4"	13	SEE DETAILS *SEE SECTION "EE"
J	12	3	3'-0"	16"	14	SEE DETAILS
K	2	4	3'-0"	*	4.00	STRAIGHT BARS *SEE SECTION "BB"
U	5	3	4'-1"	9 3/8"	7	SEE DETAILS

ALTERNATE CONSTRUCTION
 ALTERNATE PRECAST INLETS MAY BE APPROVED ON AN INDIVIDUAL BASIS. PRECAST INLETS SHALL BE OF EQUAL OR BETTER STRENGTH, MATERIAL AND WORKMANSHIP, AND SHALL MEET THE STANDARD DESIGN CRITERIA OF THE CAST-IN PLACE INLETS SHOWN IN THESE DETAILS.

TOTAL STEEL FOR 4'-0" STANDARD DEPTH INLET
 395 LBS.
 WEIGHT OF STEEL MAY VARY WITH INCREASED DEPTH OF INLET BY AN AVERAGE OF 17.5 LBS PER EACH 1/2 FOOT OF EXTRA DEPTH.
 493 CUBIC YARDS OF 3000 P.S.I. CONCRETE REQUIRED PER STANDARD INLET.
 CONCRETE FOR EACH ADDITIONAL 1/2 FOOT OF DEPTH 0.32 CU. YD.



GENERAL NOTES

1. CONCRETE FOR INLET CONSTRUCTION SHALL HAVE A MINIMUM COMPRESSIVE STRENGTH OF 3000 P.S.I. AT 28 DAYS.
2. DIMENSIONS RELATING TO PLACEMENT OF REINFORCING BARS ARE FROM CENTER TO CENTER OF BARS UNLESS OTHERWISE NOTED. BAR SPLICES ARE PERMISSIBLE IF BARS ARE TIED AND OVERLAPPED 30 DIAMETERS.
3. PIPE LATERALS MAY ENTER INLET AT SIDES OR ENDS.
4. STRUCTURAL EXCAVATION WILL NOT BE A SEPARATE PAY ITEM.
5. CHAMFER ALL EXPOSED EDGES AROUND INLET OPENINGS 3/4".
6. SEE SHEET FOR RECESSED INLET DETAILS.

NO SCALE

Rev lengths. 9/10/82

CITIES OF ADDISON AND FARMERS BRANCH, TEXAS

MARSH LANE
 BROOKHAVEN CLUB DRIVE TO BELT LINE ROAD

CURB INLET DETAILS
 14 FOOT INLET

Turner Collie & Braden Inc.

Unit CITY DALLAS	Scale: Horiz. Vert.	Date FEB., 1982
Designed	Checked	Job No. 6042-010 Contract
Drawn	Approved	Sheet 51 of 66