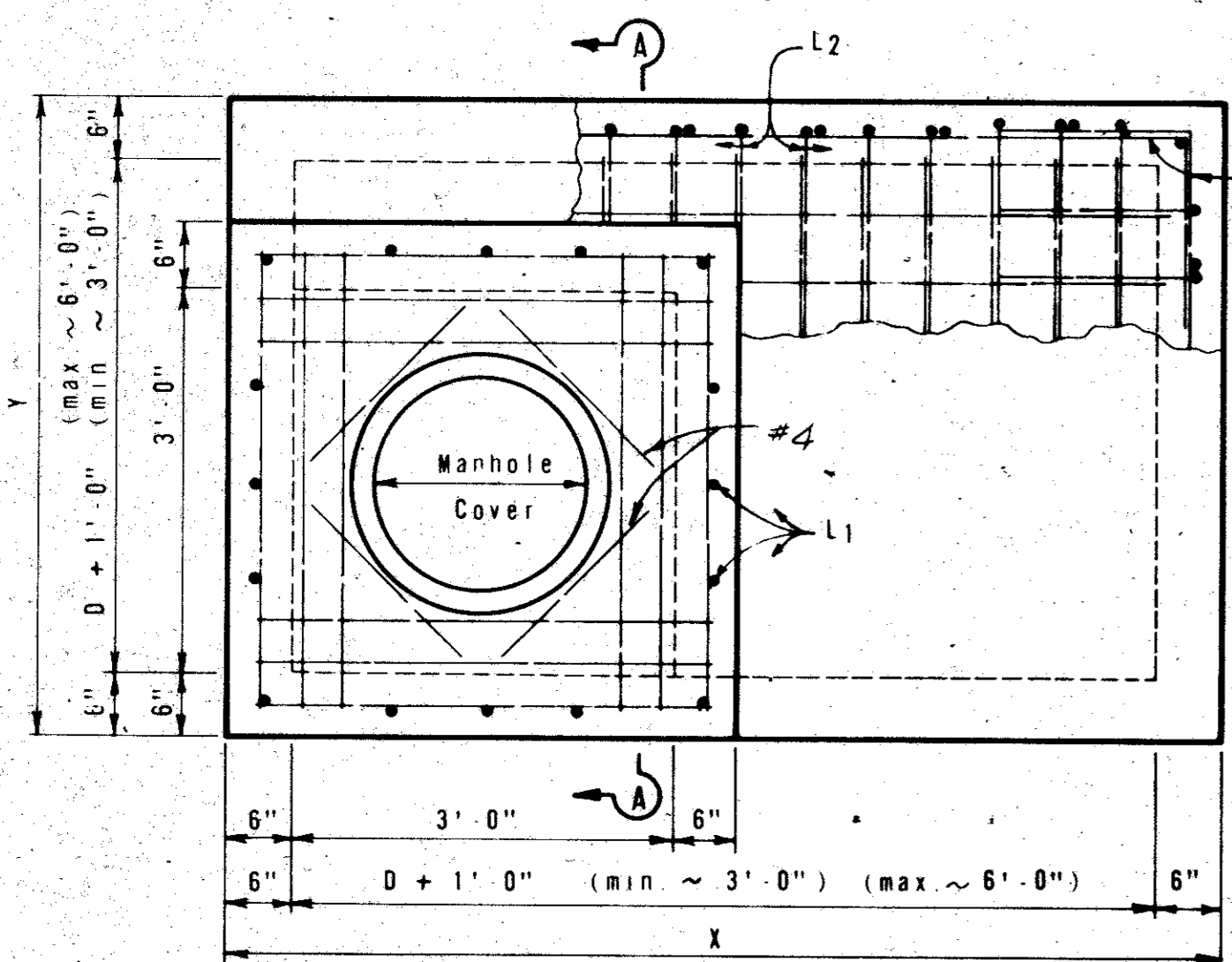
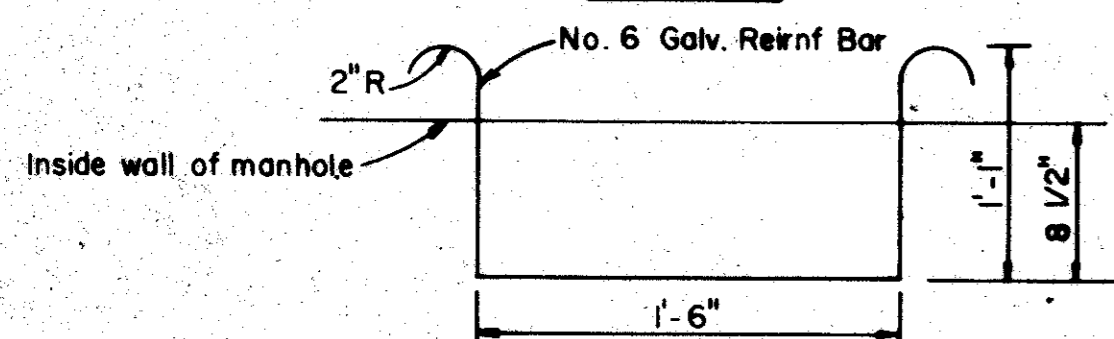


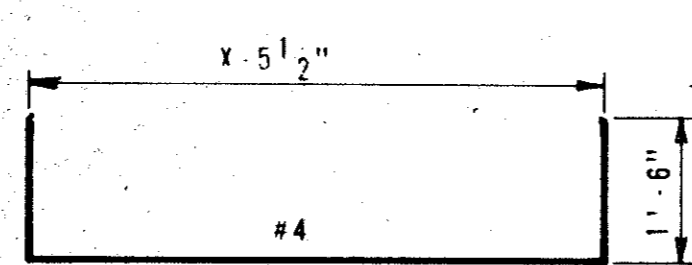
Note: Riser, either cast-in-place or concrete pipe, may be located in any corner.



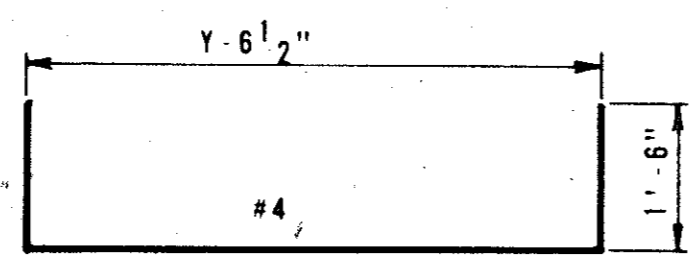
PLAN



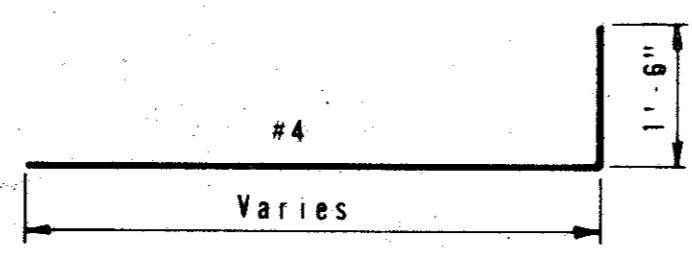
DETAIL OF MANHOLE STEP FOR CAST IN PLACE RISER
NOTE: Manhole Steps For Pipe Risers Shall Conform To The Requirements Of ASTM C 478.



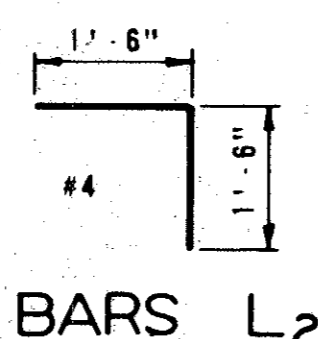
BARS B



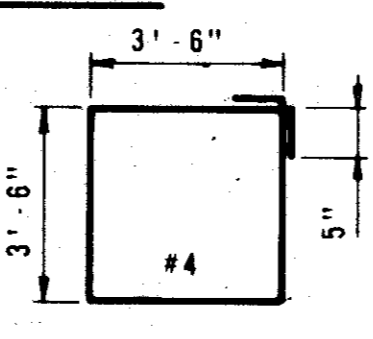
BARS C



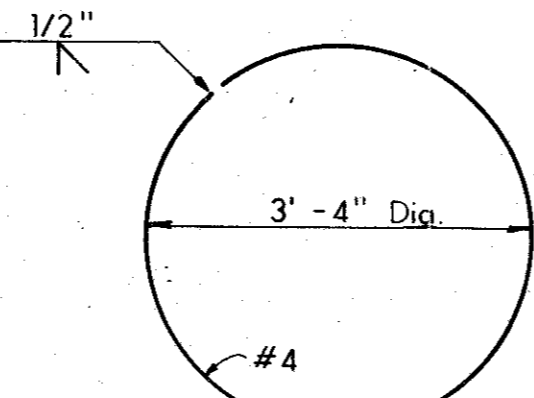
BARS L1



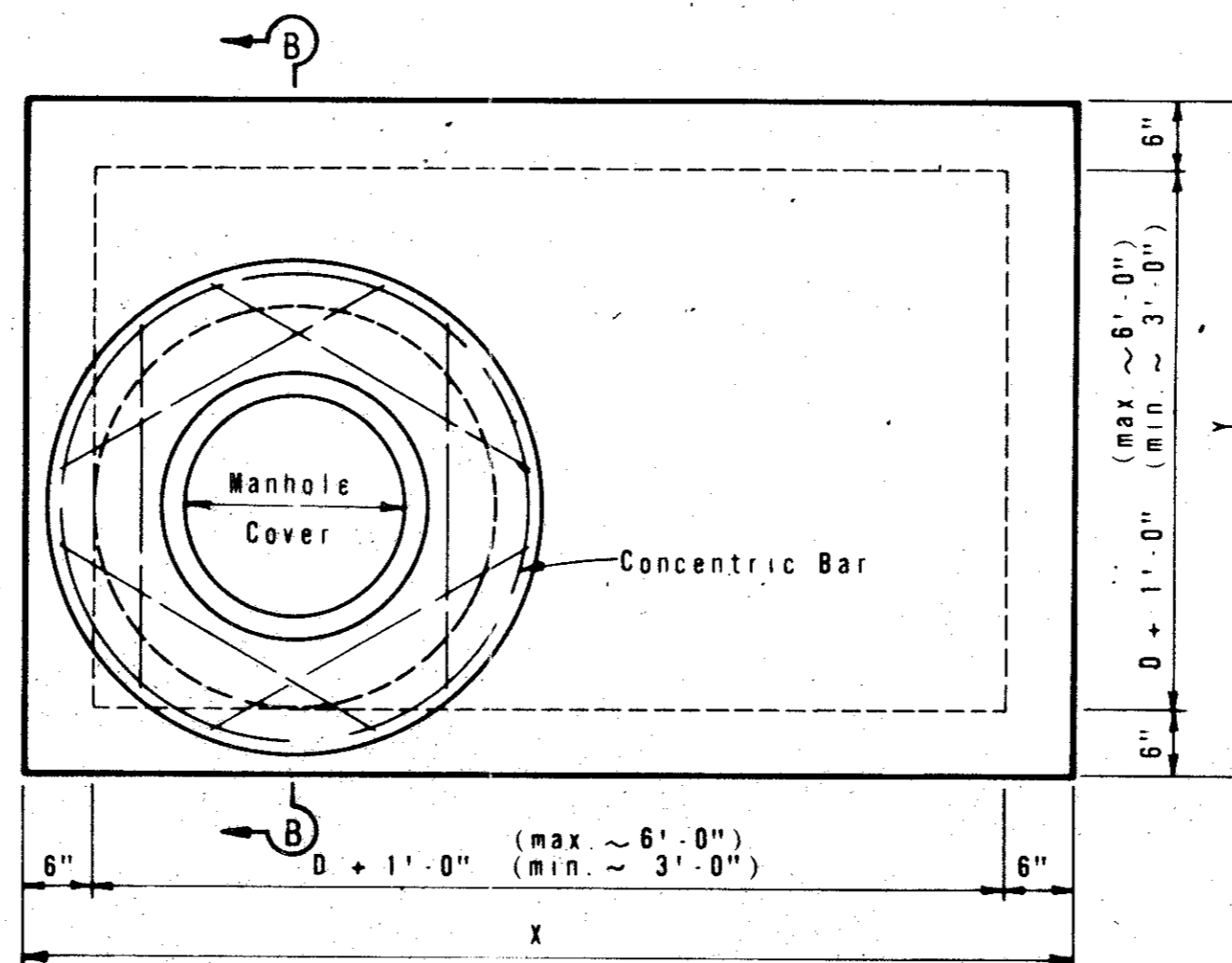
BARS L2



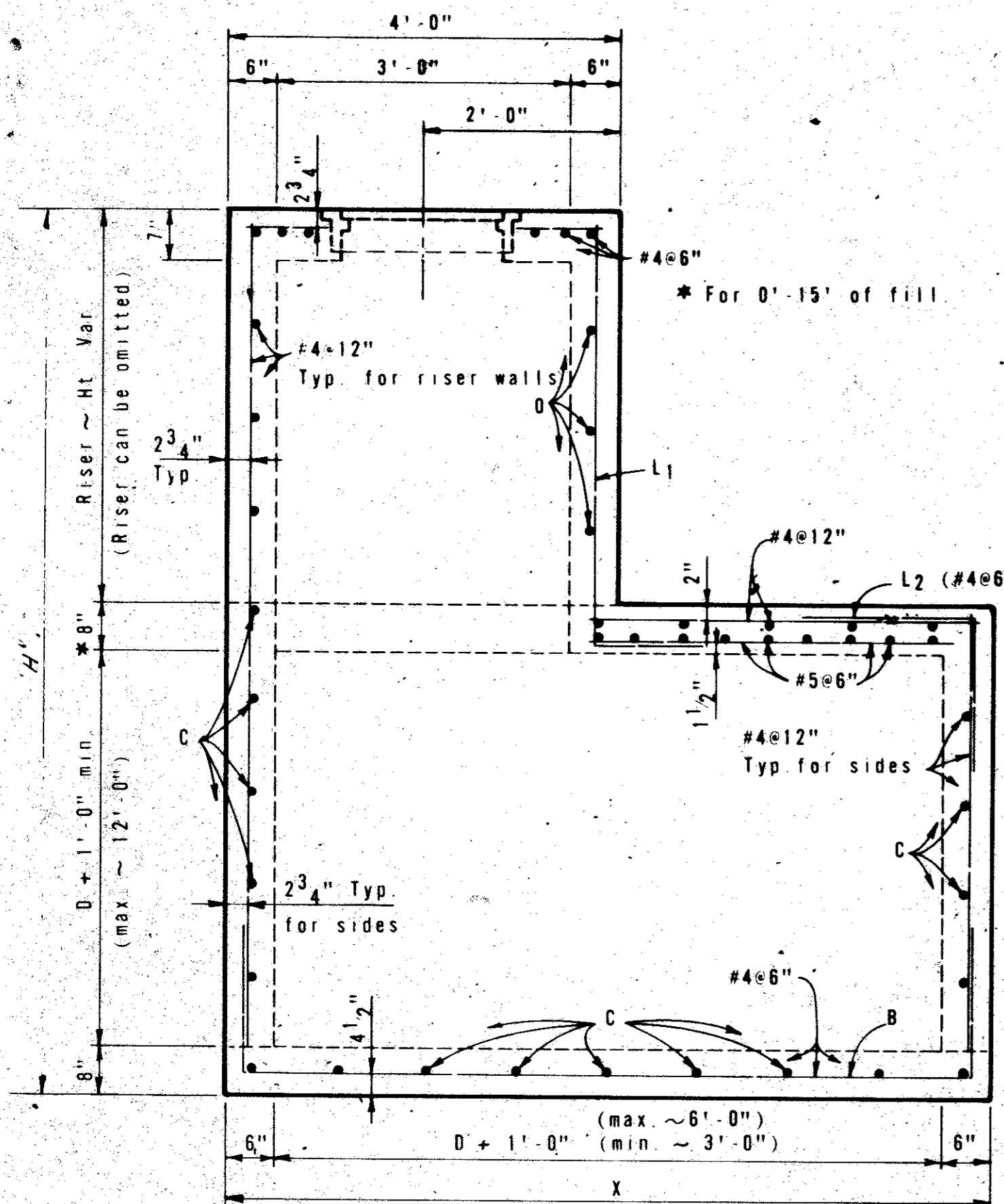
BARS O



CONCENTRIC BAR

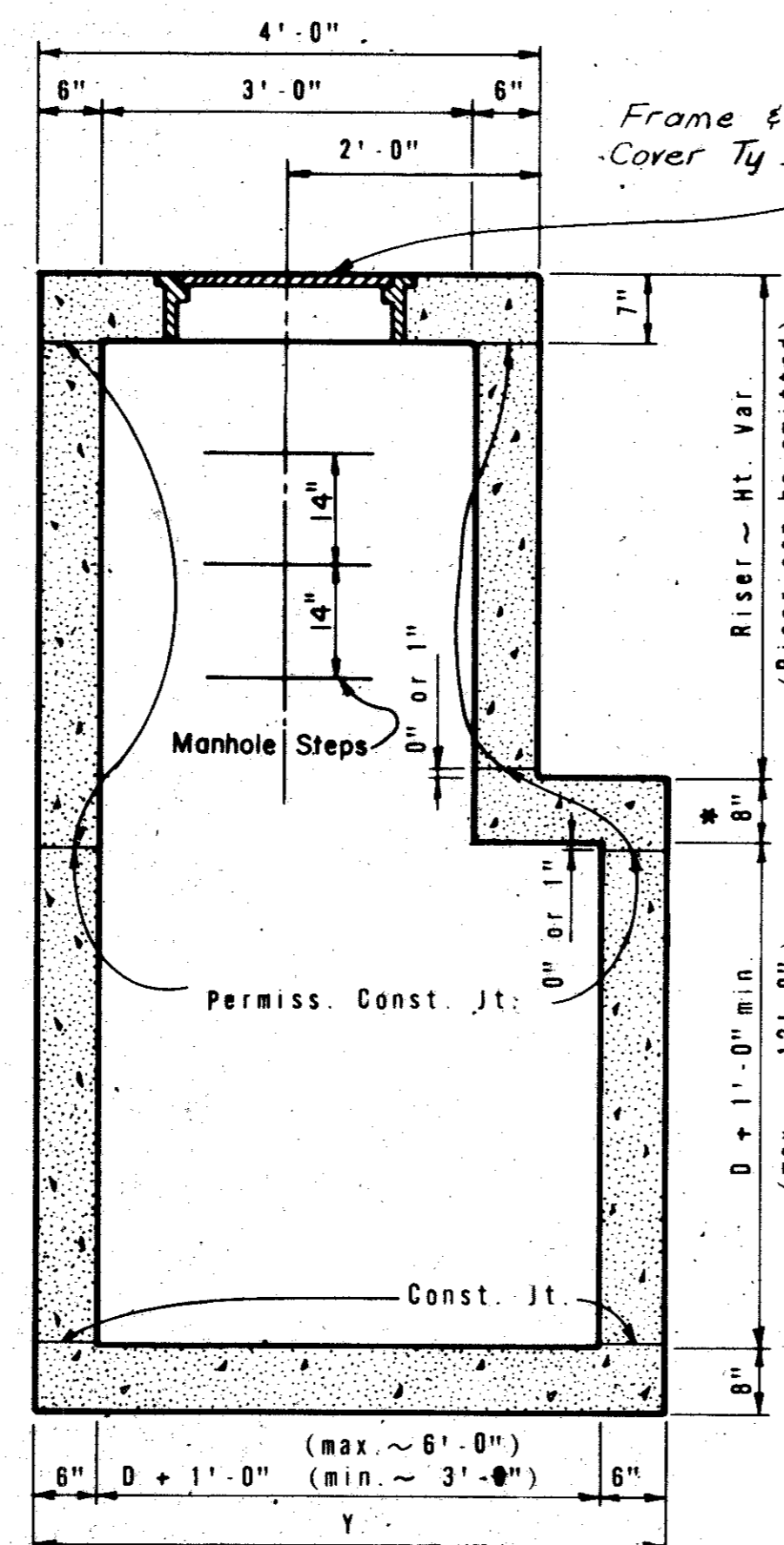


PLAN

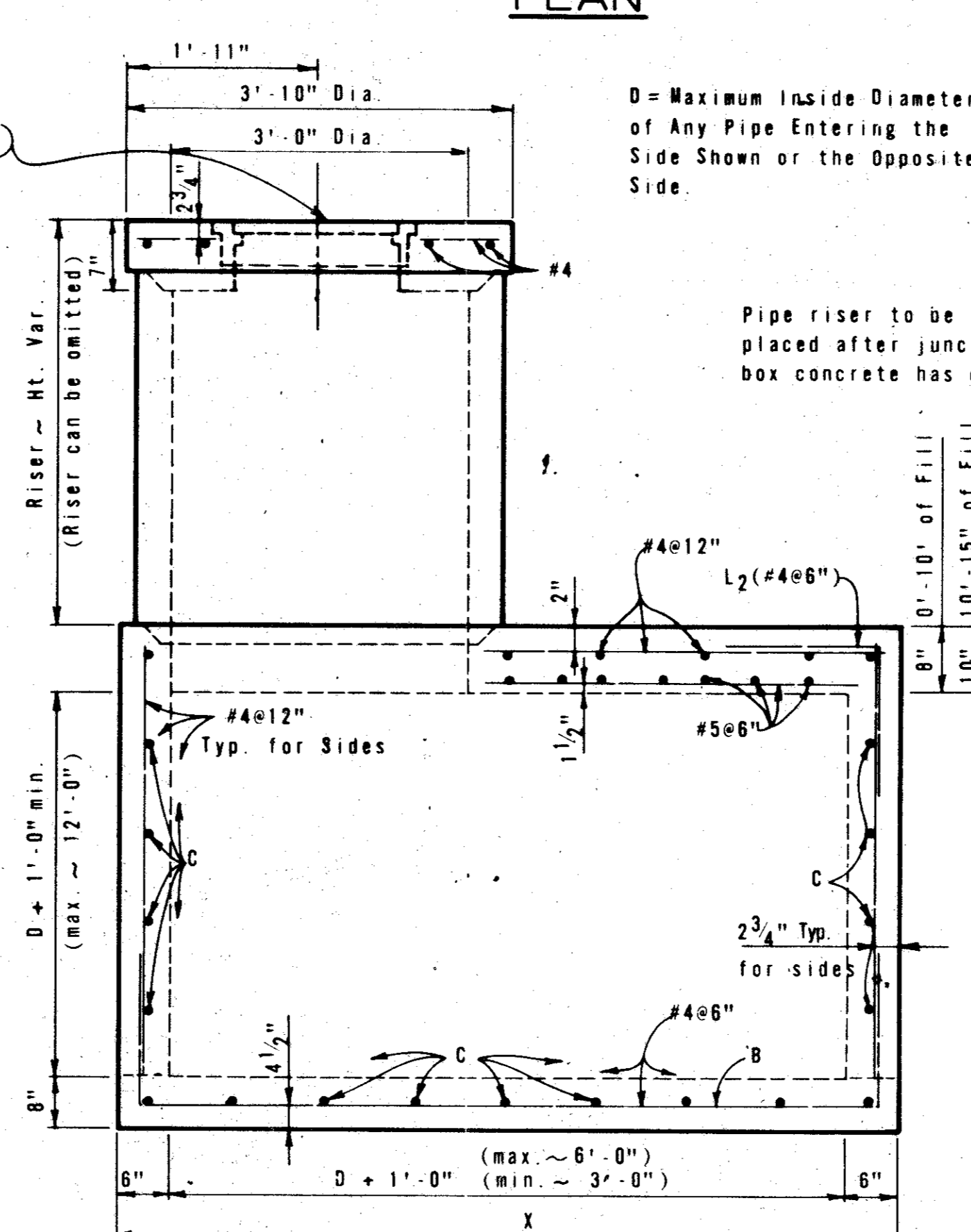


ELEVATION

MANHOLE WITH CAST-IN-PLACE RISER

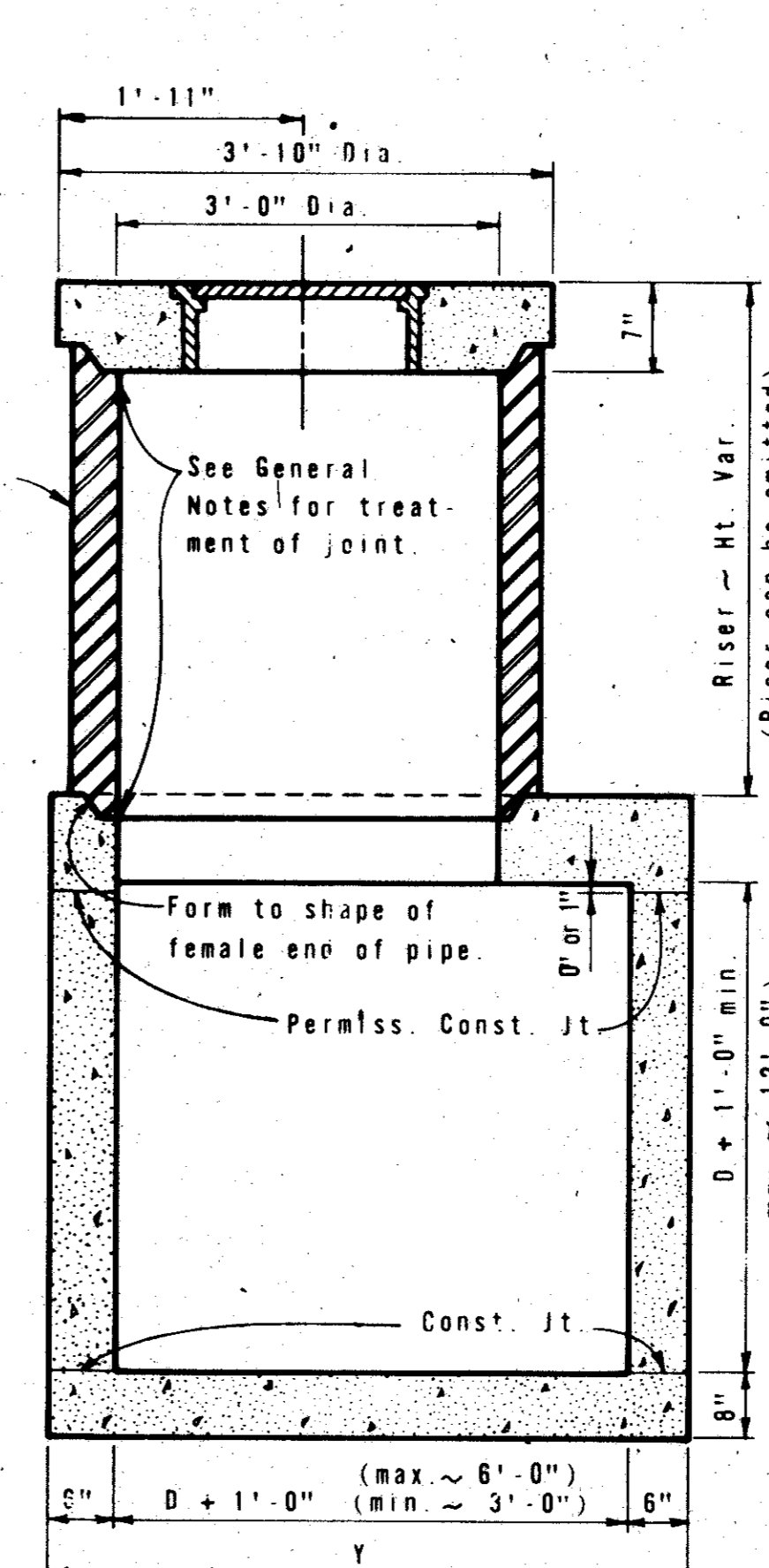


SECTION A-A



ELEVATION

OPTIONAL MANHOLE WITH PIPE RISER



SECTION B-B

GENERAL NOTES

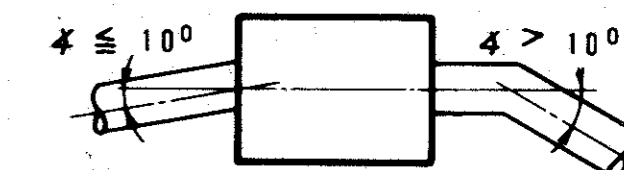
Unless otherwise shown in the plans, payment will be made for each Manhole of the Type M and Frame and Cover (Ty II). See Inlet Details for frame and cover (Ty II). Exposed edges shall be chamfered 3/4".

The Contractor may propose alternate procedures for the construction of Manholes, including precast units. Plans for such proposed alternates shall be submitted to the Engineer for review and approval before construction.

In areas of conflict between reinforcing steel, block-outs, pipes, anchor bolts or other reinforcing steel, the reinforcement shall be bent or adjusted to clear as directed by the Engineer.

The riser may be constructed of reinforced concrete as shown or of Reinforced Concrete Pipe, Class III, in accordance with ASTM Designation C-76. If pipe is used, joints shall conform to the Item "Reinforced Concrete Pipe Culverts".

Connecting pipes should enter within 10° of normal to inlet wall. If necessary, pipe elbow or curved approach alignment should be used to stay within this limit.



Pipes may enter any or all walls. The maximum size of pipe that can be accommodated is 60". More than one pipe may enter a side, subject to the maximum box dimensions shown. The clear distance between adjacent pipes should be 9" minimum.

Provide 3/4" premolded expansion joint, sealed with rubber compound around manhole top when in pavement.

CITIES OF ADDISON AND FARMERS BRANCH, TEXAS		
MARSH LANE		
BROOKHAVEN CLUB DRIVE TO BELT LINE ROAD		
MANHOLE TYPE M		
Turner Collie & Braden Inc.		
Unit: SD HPT	Scale: Horz. Vert.	Date: FEB, 1982
Designed:	Checked:	Job No. 6042-010 Contract
Drawn:	Approved:	Sheet 52 of 66