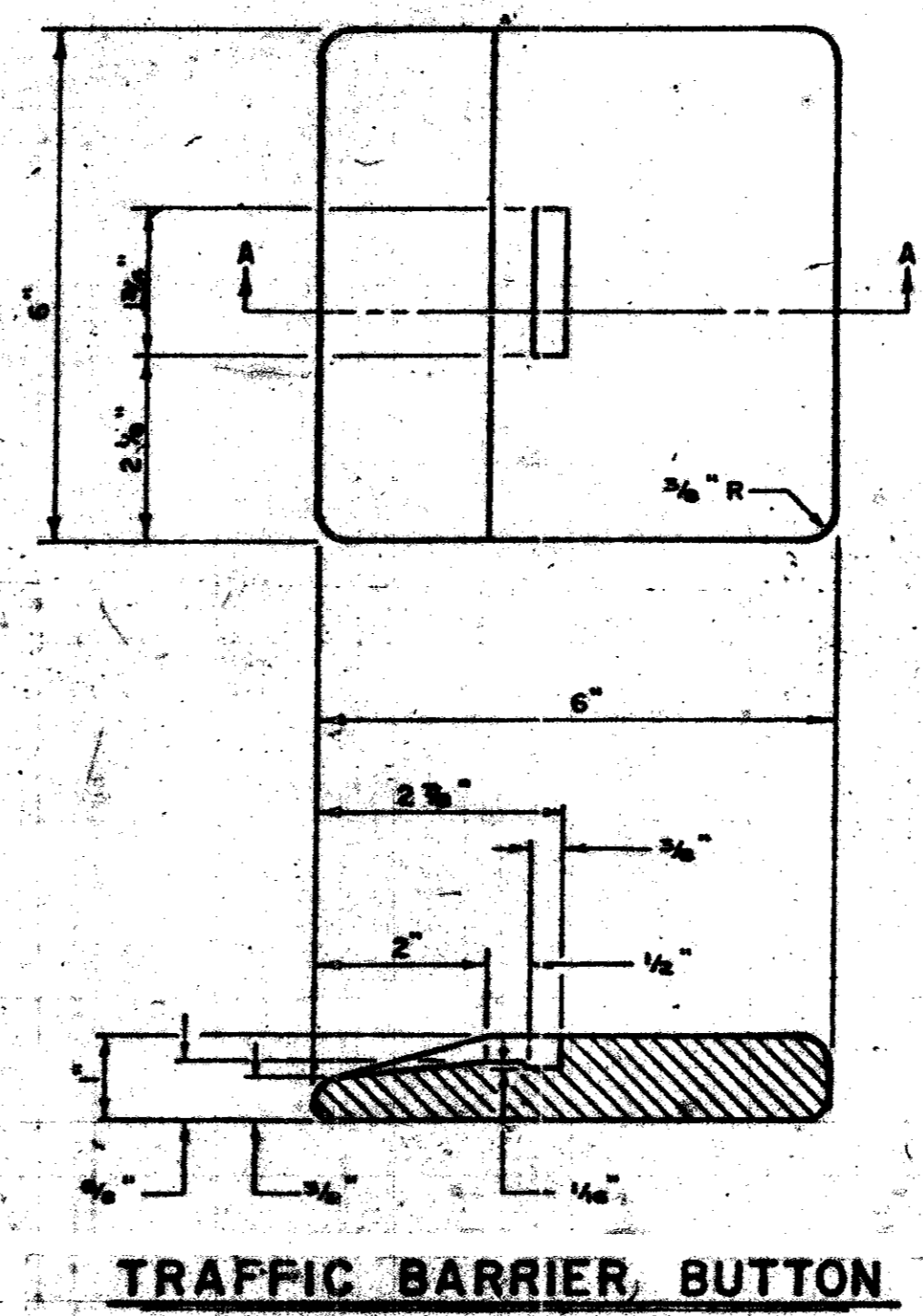
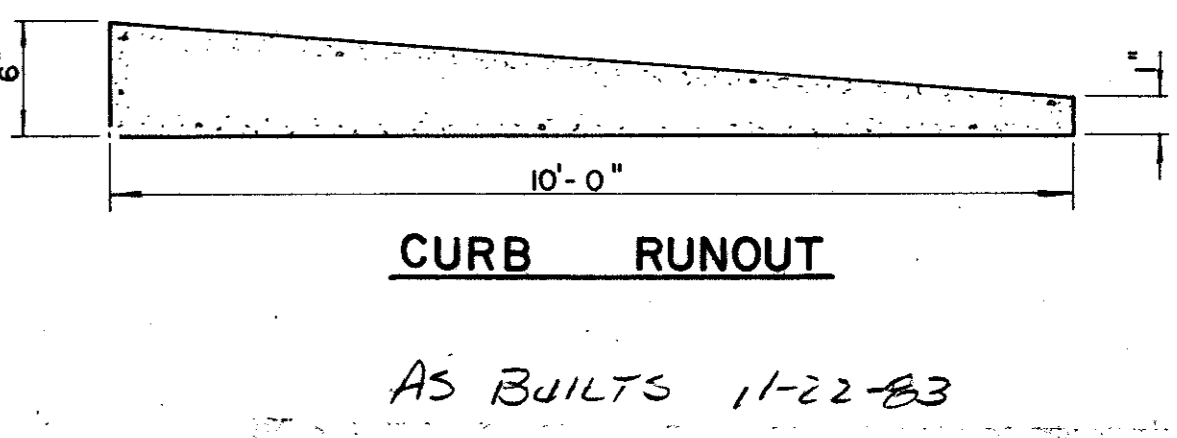
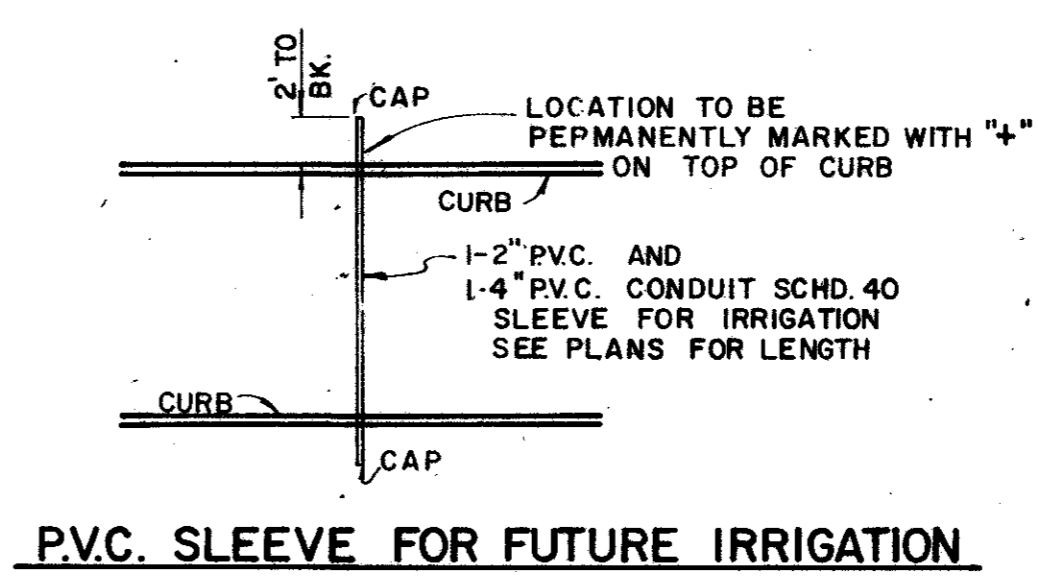
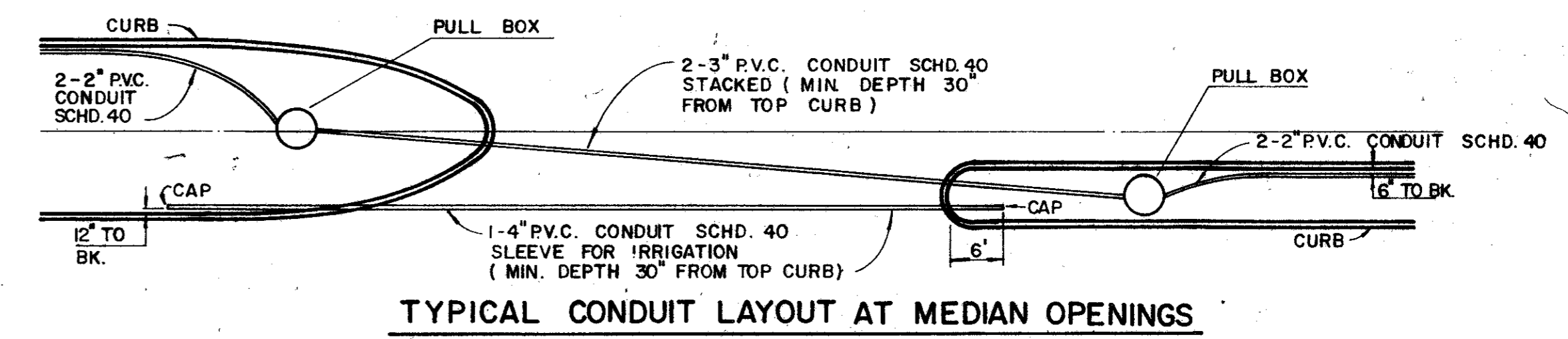


PAVEMENT MARKERS (REFLECTORIZED) TYPE P-15W

NOTES:
 THE PAVEMENT UPON WHICH THE TRAFFIC BUTTONS AND PAVEMENT MARKERS ARE TO BE PLACED SHALL BE GROUND, BUFFED, SANDBLASTED, OR OTHERWISE PREPARED AND APPROVED BY THE ENGINEER TO INSURE PROPER CLEANING OF THE PAVEMENT SURFACE. THEY SHALL BE BONDED TO THE ROADWAY SURFACE WITH EPOXY ADHESIVE CONFORMING WITH SPECIFICATION. MARKER SHOWN ARE FOR ILLUSTRATION PURPOSES ONLY. THEY ARE NOT INTENDED TO SPECIFY ANY PARTICULAR PRODUCT.



NOTE:
 TRAFFIC BARRIER BUTTONS TO BE CERAMIC AS MANUFACTURED BY AMERICAN CLAY FORMING OR APPROVED EQUAL AND APPROVED BY THE CITY OF FARMERS BRANCH, ENGINEERING DEPARTMENT.
 LANE LINE BUTTONS TO BE 4" DIA. LANE MARKERS, P-7 PERMARK CERAMIC ROAD MARKERS OR APPROVED EQUAL.
 TRAFFIC BUTTONS TO BE FURNISHED BY CONTRACTOR.



CITIES OF ADDISON AND FARMERS BRANCH, TEXAS		
MARSH LANE		
BROOKHAVEN CLUB DRIVE TO BELT LINE ROAD		
MISCELLANEOUS DETAILS		
Turner Collier & Braden Inc.		
Unit: PAL	Date: FEB. 1982	Job No. 6042-010
Designed: GGS	Checked: PAL	Contract
Drawn: LJK	Approved: PAL	Sheet 53 of 66

