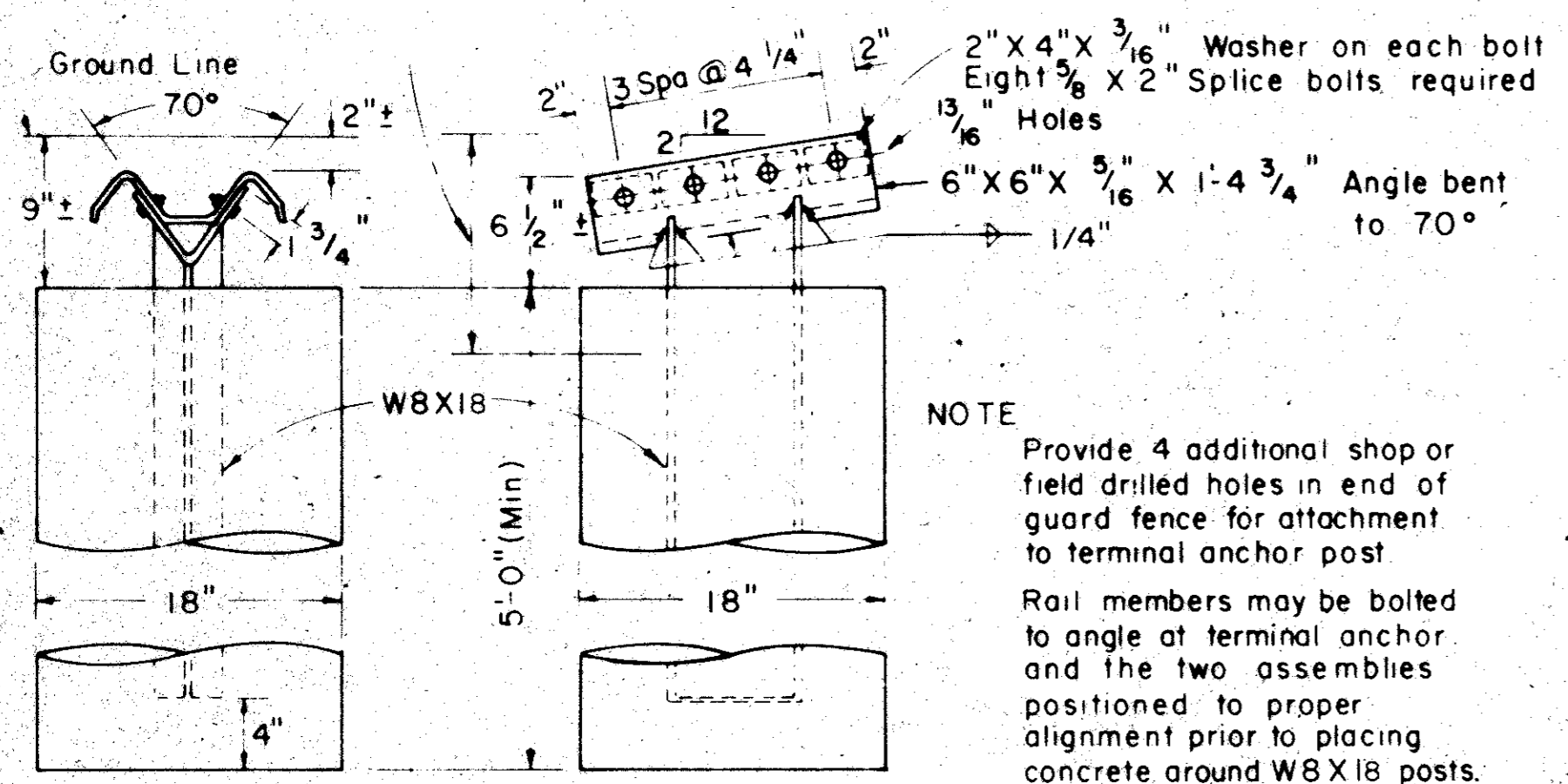


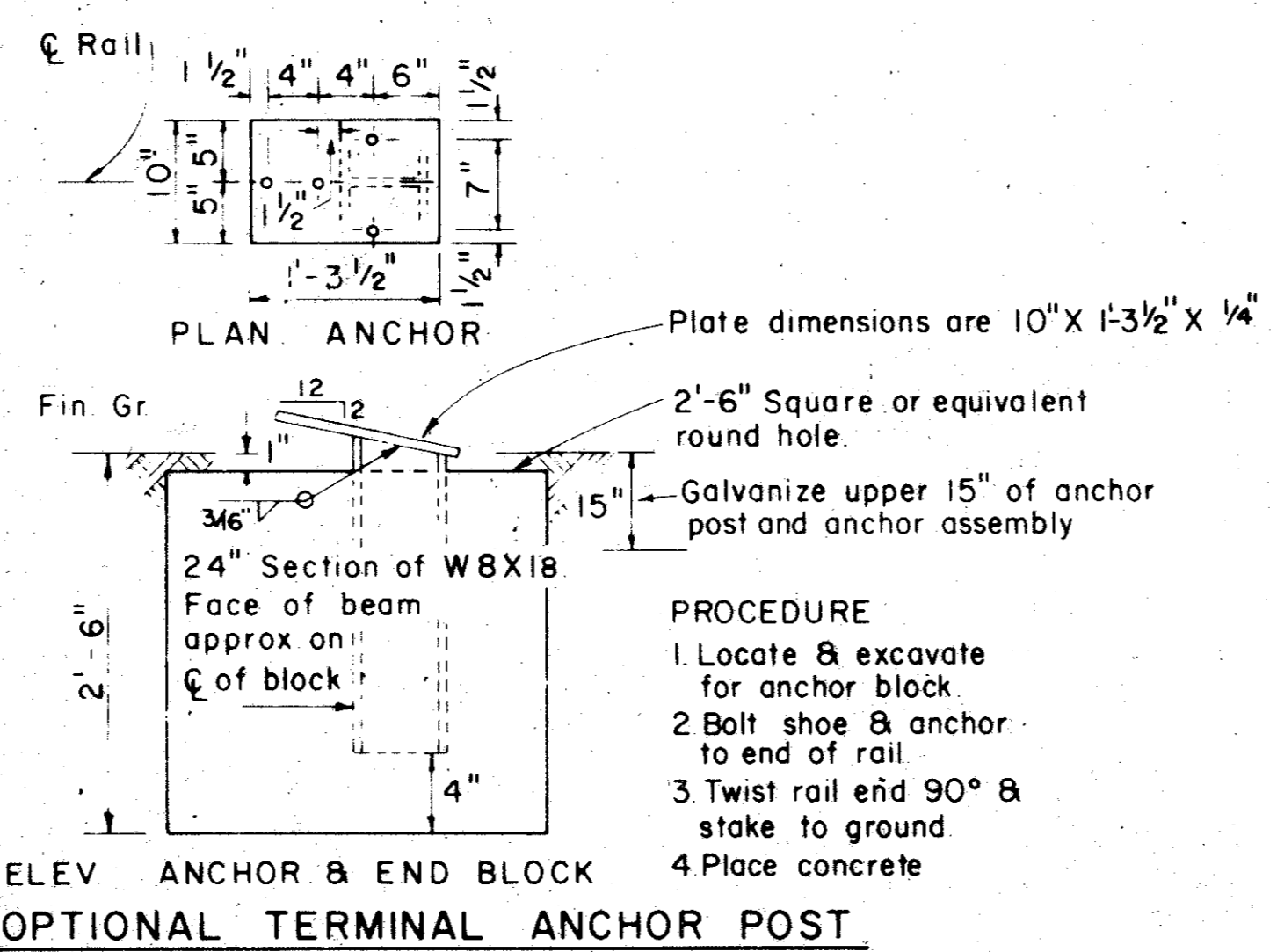
NOTE Taper rates are relative to pavement edge. Change in taper rates to be accomplished with short smooth curves.

* NOTE Dimension measured to center of splice when special end shoe is used

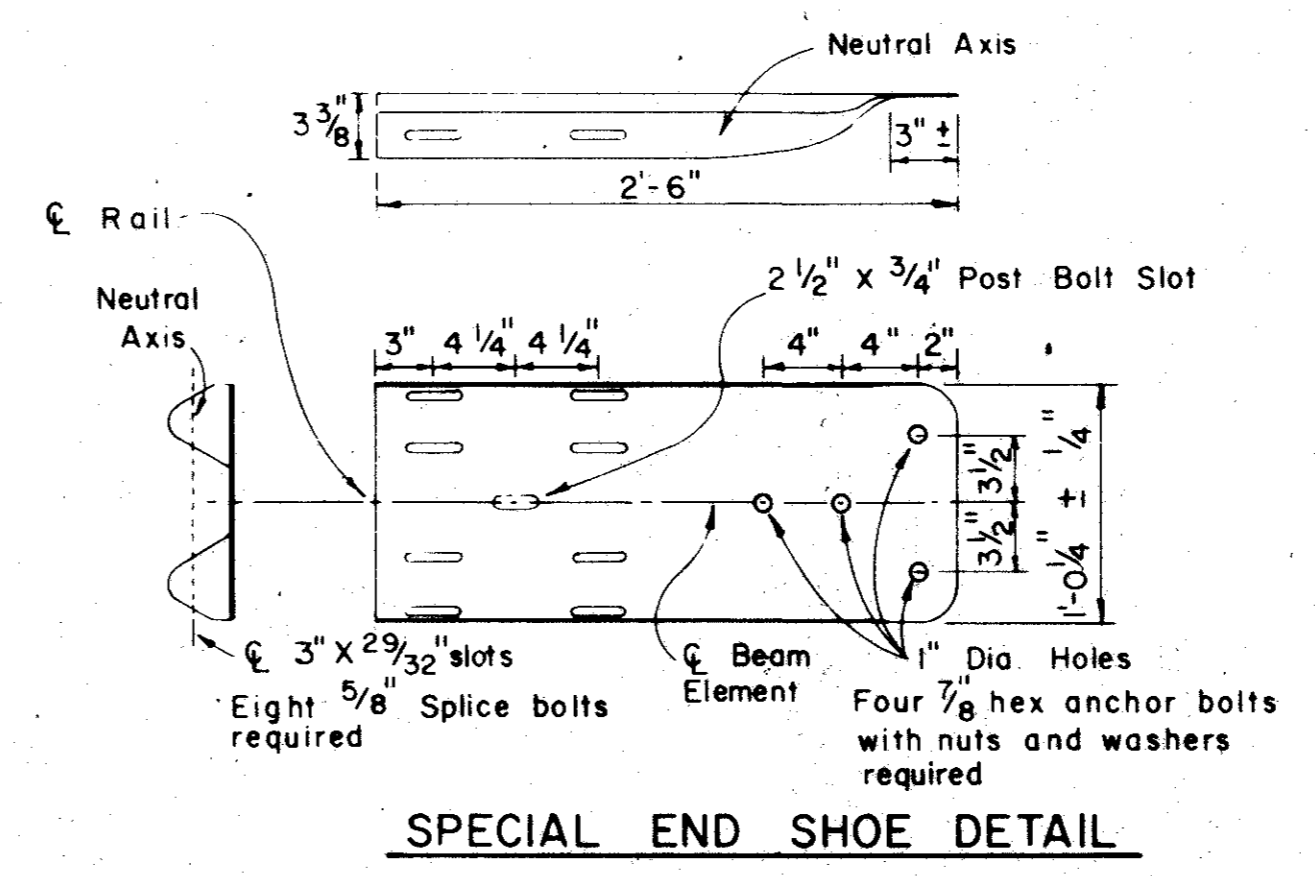
NOTE Galvanize upper 15" of anchor post and anchor assembly



NOTE Provide 4 additional shop or field drilled holes in end of guard fence for attachment to terminal anchor post. Rail members may be bolted to angle at terminal anchor and the two assemblies positioned to proper alignment prior to placing concrete around W8X18 posts.

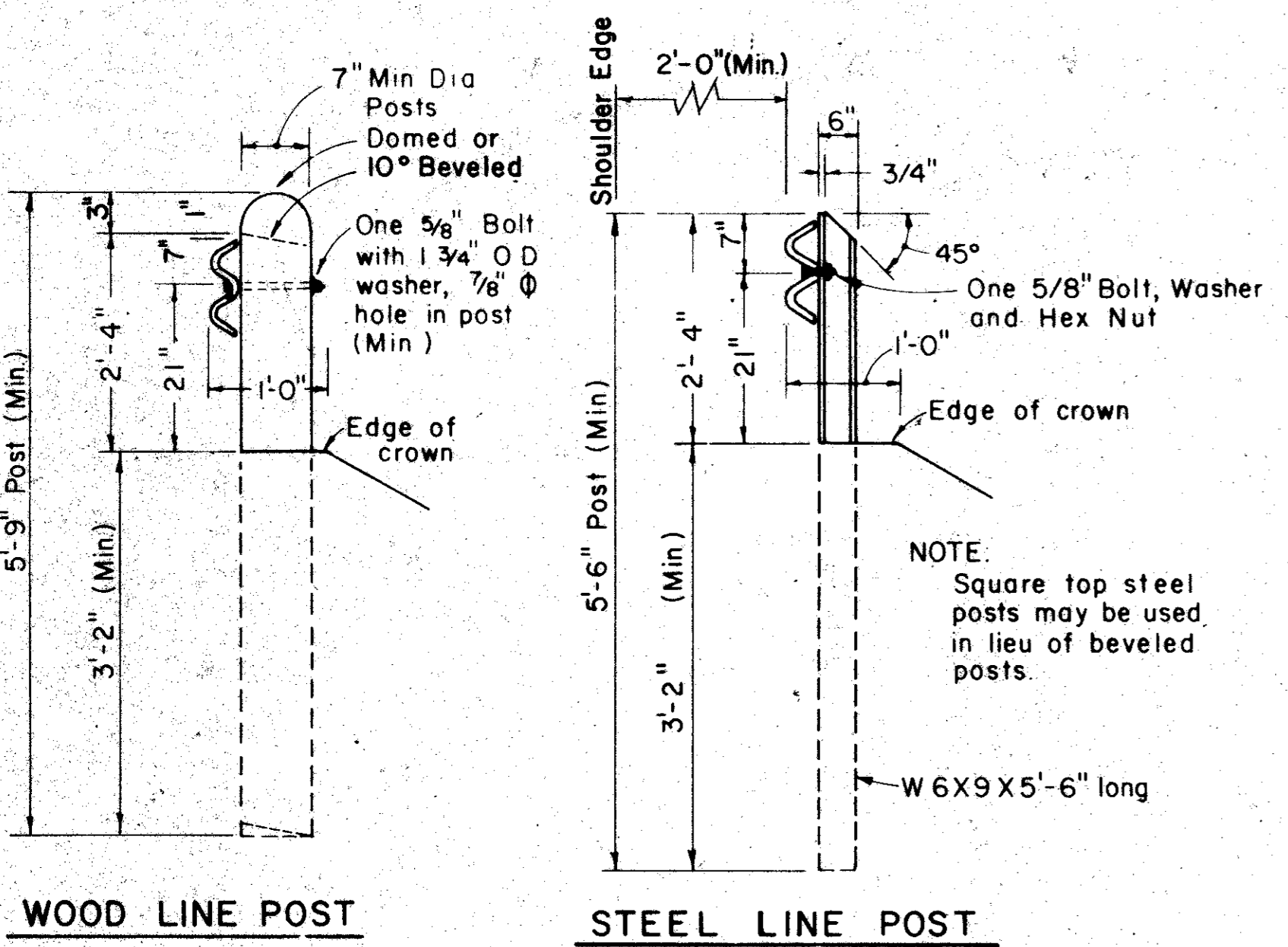


PROCEDURE
1. Locate & excavate for anchor block.
2. Bolt shoe & anchor to end of rail.
3. Twist rail end 90° & stake to ground.
4. Place concrete

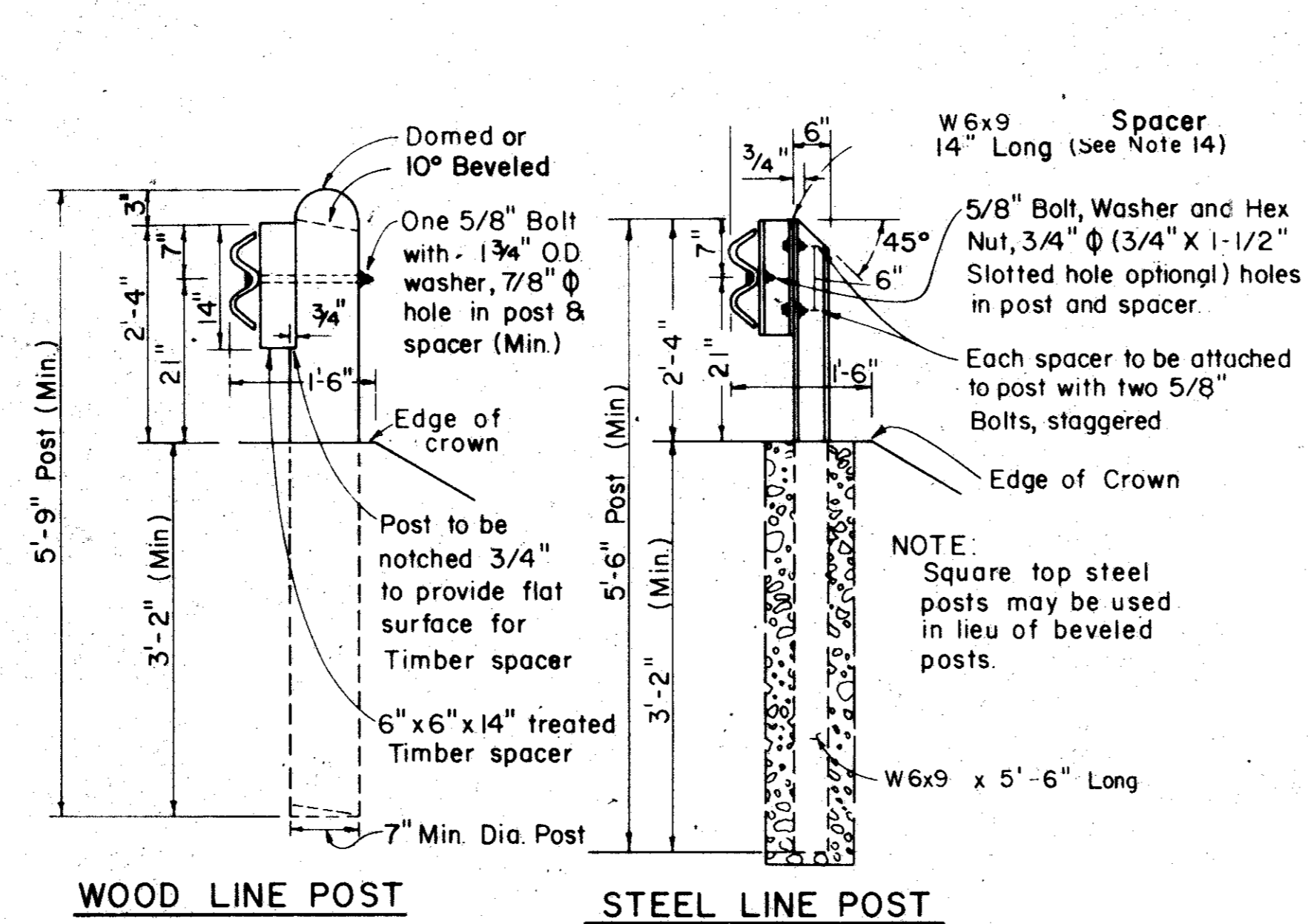


- GENERAL NOTES
- EXCEPT WHERE USED AT STRUCTURES OR WHERE OTHERWISE SHOWN ON PLANS, GUARD RAIL TO BE LOCATED A MINIMUM OF ONE FOOT FROM THE SHOULDER EDGE ON EXISTING ROADWAYS AND A MINIMUM OF TWO FEET FROM THE SHOULDER EDGE ON NEW CONSTRUCTION. EXACT POSITION TO BE AS SHOWN ELSEWHERE ON PLANS OR AS DIRECTED BY THE ENGINEER. RAIL TO BE TRANSITIONED TO A SMOOTH CONNECTION WITH OTHER STRUCTURE OR RAIL AS SHOWN ELSEWHERE ON PLANS.
 - AT THE OPTION OF THE CONTRACTOR THE RAIL ELEMENTS FOR THE GUARD RAIL MAY BE FURNISHED IN EITHER 12 1/2 OR 25 FOOT NOMINAL LENGTHS. RAIL TO BE FURNISHED WITH POST BOLT SLOTS FOR 5/8" DIAMETER BOLT CONNECTION TO POSTS.
 - BOLTS TO BE OF SUFFICIENT LENGTH TO EXTEND THROUGH THE FULL THICKNESS OF THE NUT AND NO MORE THAN 3/4" BEYOND IT.
 - TOP OF TERMINAL ANCHOR POST ASSEMBLY, RAIL ELEMENT, AND ALL STEEL FITTINGS THEREON TO BE GALVANIZED.
 - WHERE ROCK IS ENCOUNTERED OR WHERE SHOWN ON PLANS, DIAMETER OF THE HOLES AND MATERIAL FOR BACKFILLING TO BE AS DIRECTED BY THE ENGINEER. TIMBER POSTS TO BE SET IN CONCRETE.
 - THE TERMINAL ANCHOR POST SHALL BE SET IN CLASS "A", "B" OR "C" CONCRETE IN ACCORDANCE WITH ITEM "CONCRETE FOR STRUCTURES", OR SET IN CONCRETE IN ACCORDANCE WITH ITEM "CONCRETE PAVEMENT". CONCRETE SHALL BE SUBSIDIARY TO THE BID ITEM "METAL BEAM GUARD FENCE".
 - TIMBER POSTS MAY BE BEVELED AT APPROXIMATELY 10 DEGREES ON THE TOP OR BOTH ENDS WITH HIGH SIDE OF TOP OF POST PLACED TOWARD THE ROADWAY OR THE. MAY BE DOMED. WHEN "BLOCKED OUT", THE UPPER PORTION OF THE POST SHALL BE NOTCHED 3/4" TO PROVIDE FLAT SURFACE FOR SPACER. A TOLERANCE OF ± 1/8" ON THE NOTCHED POST.
 - AN ANCHOR OTHER THAN TO A TERMINAL ANCHOR POST TO CONSIST OF A CONNECTION SIMILAR TO THE RAIL SPLICE OR SIMILAR TO THE SPECIAL END SHOE.
 - SPECIAL FABRICATION WILL BE REQUIRED IN INSTALLATIONS HAVING A CURVATURE OF LESS THAN 150" RADIUS.
 - POST SPACING WILL BE 6'-3" EXCEPT THAT THE FIRST POST WILL BE 25' FROM THE TERMINAL ANCHOR POST AND THE NEXT TWO POSTS SPACED AT 12'-6" WITH A MINIMUM OF 8 POSTS ADJACENT TO STRUCTURES SPACED AT 3'-1 1/2".
 - SPECIAL END SHOE ANCHOR MAY BE USED WITH THE 18" X 5'-0" CONCRETE FOOTING OR THE ANCHOR MAY BE USED WITH THE 2'-6" SQUARE OR EQUIVALENT CONCRETE FOOTING.
 - CROWN WILL BE WIDENED TO ACCOMMODATE GUARD RAIL.
 - STEEL POSTS SHALL BE SET IN CONCRETE AND BLOCKED OUT
 - A 6"x6"x14" TREATED TIMBER SPACER OF SOUTHERN YELLOW PINE SHALL BE USED WITH WOOD POSTS AND A 6"x9" SPACER 14" LONG SHALL BE USED WITH STEEL POSTS. A TOLERANCE OF ± 1/4" IN ANY DIMENSION WILL BE PERMITTED ON THE TREATED TIMBER SPACER.

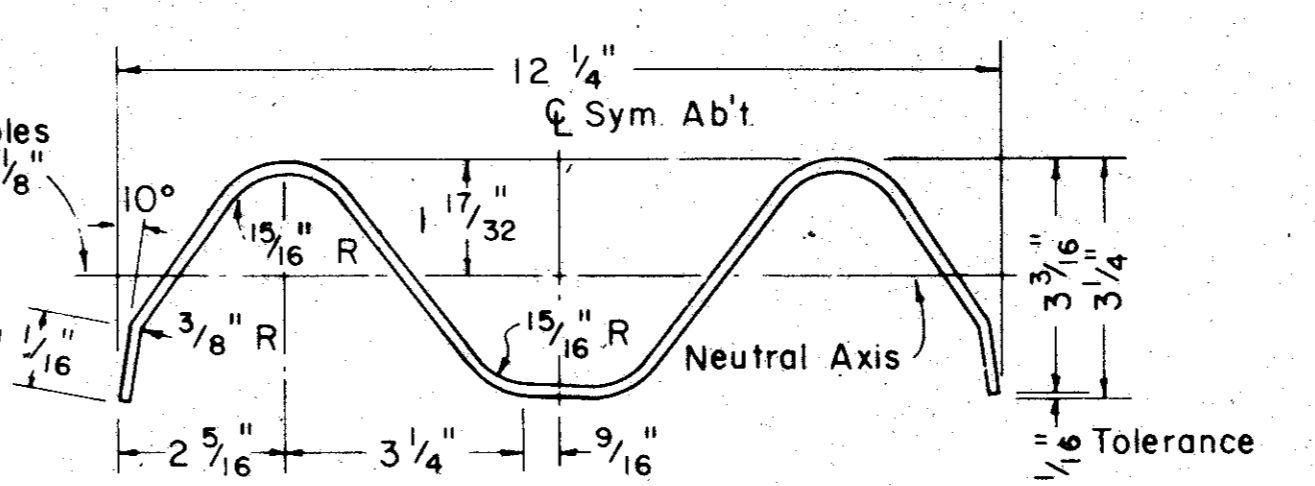
DETAIL OF TERMINAL ANCHOR POST



WOOD LINE POST STEEL LINE POST

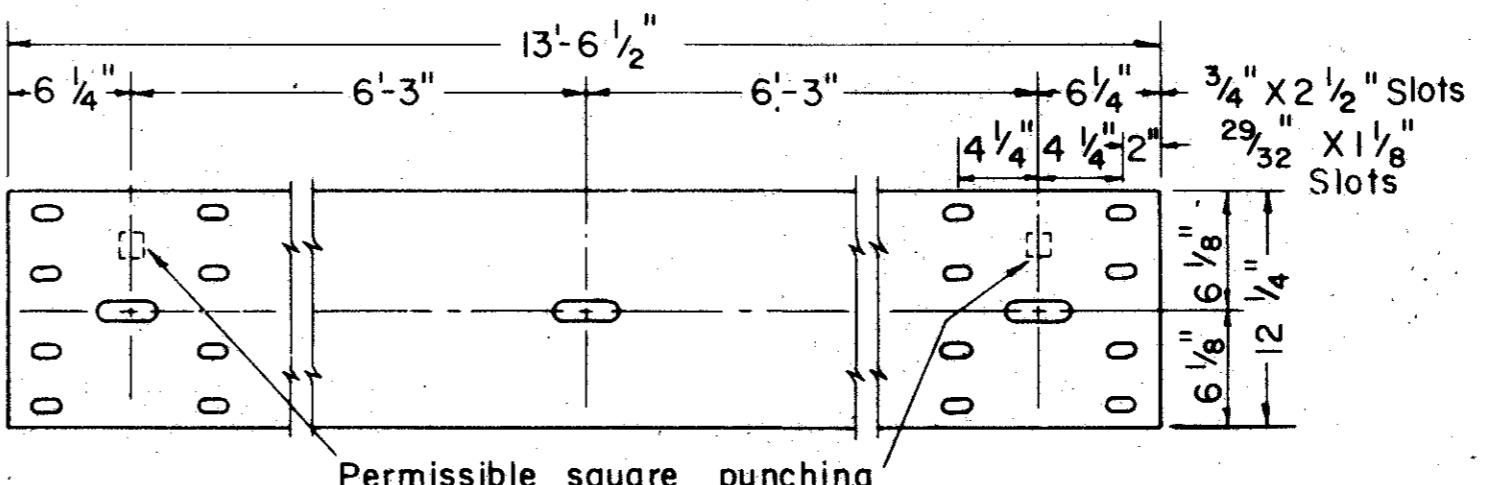


WOOD LINE POST (Blockout) STEEL LINE POST (Blockout)



NOTE: Actual section may be slightly different depending upon manufacturer.

SECTION THRU RAIL ELEMENT



ELEVATION OF NOMINAL 12 1/2 FOOT GUARD RAIL

NOTE: When undisturbed solid rock is encountered the minimum depth of the hole shall be 1'-6"