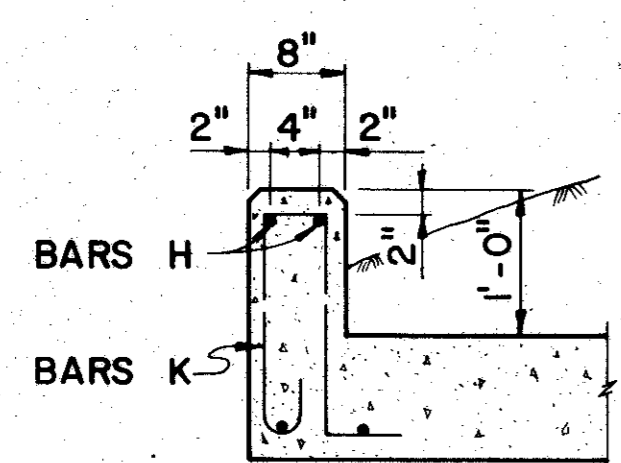
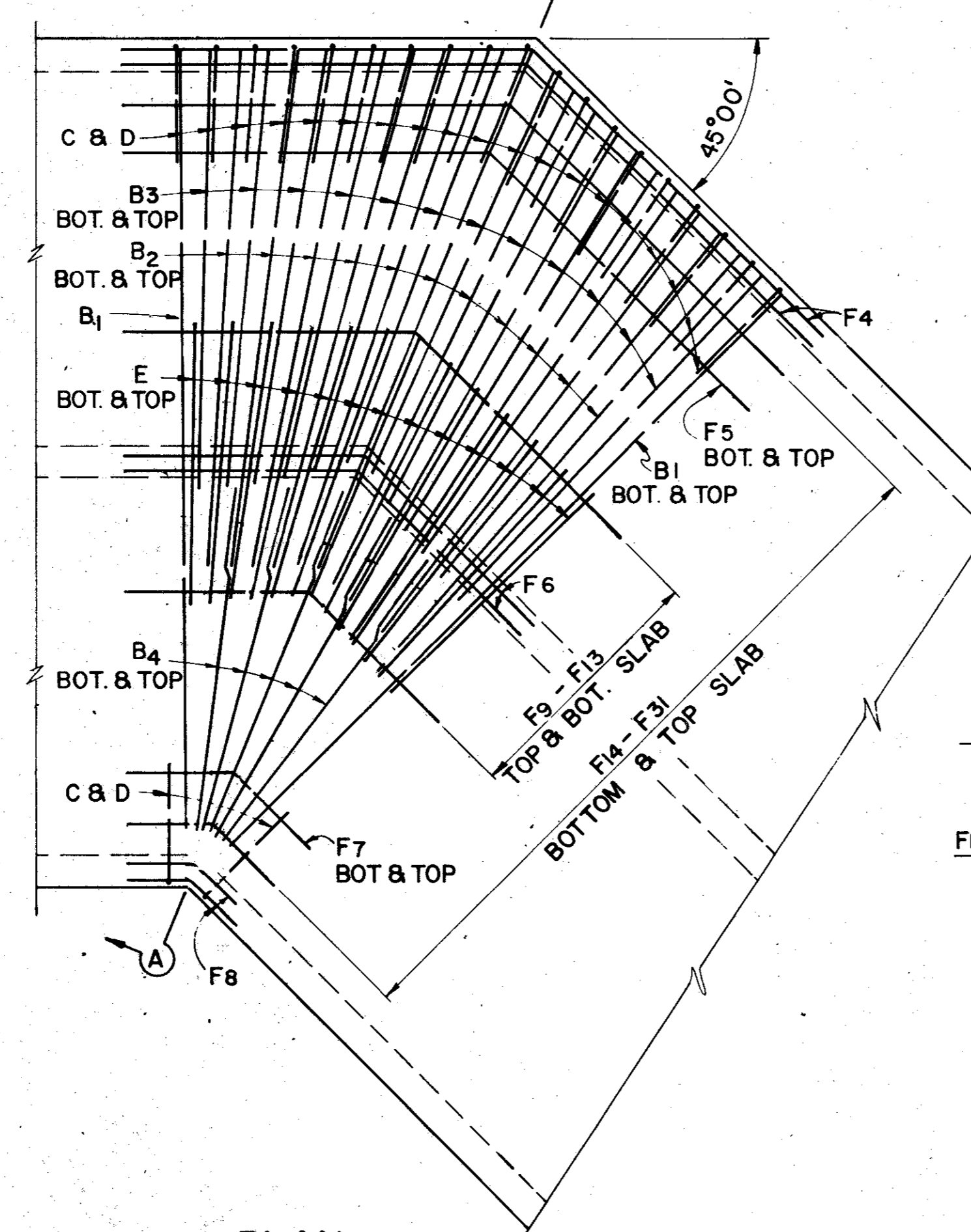


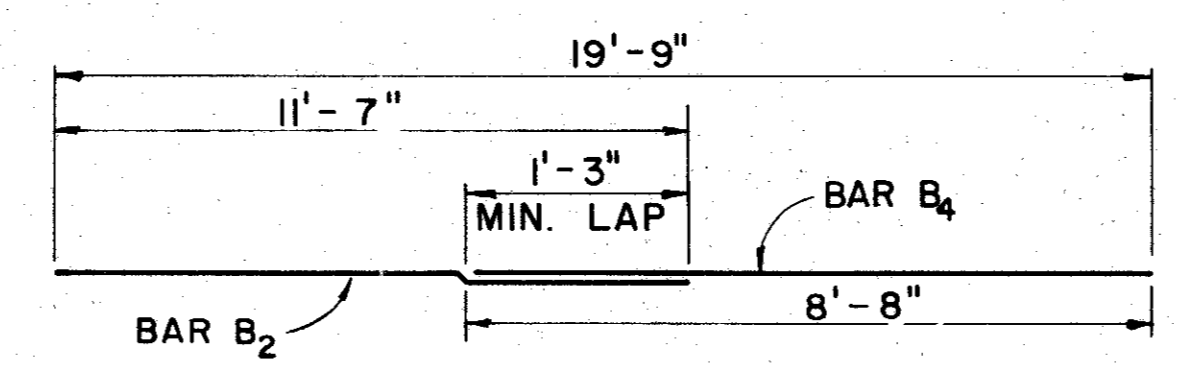
SECTION A-A
(BAR DESIGNATION FOR ANGLE SECTION)



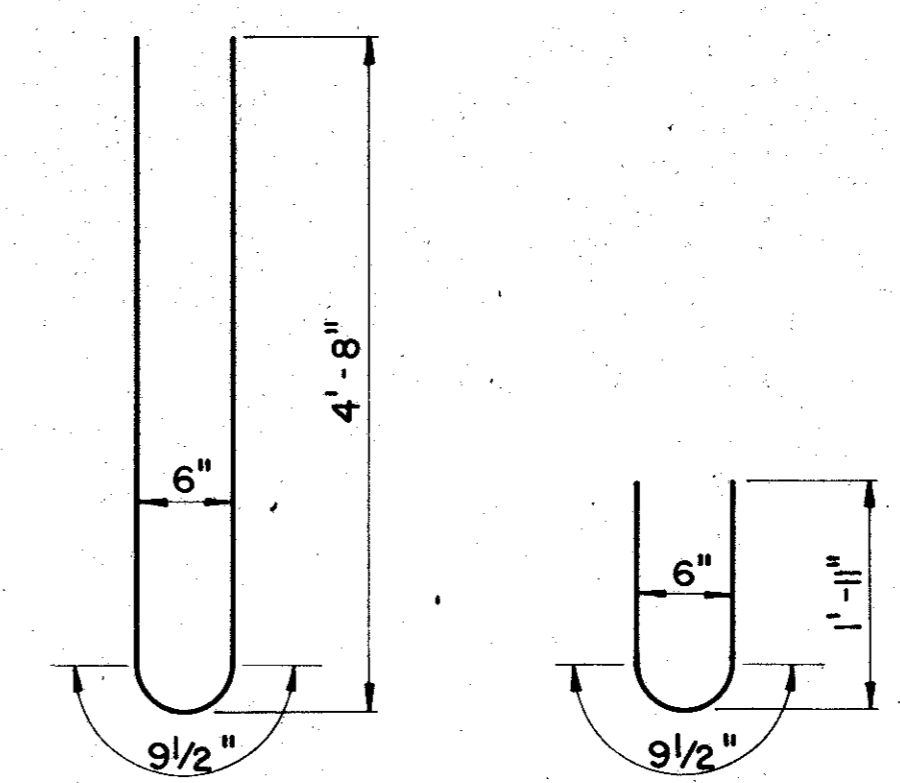
CURB SECTION



PLAN
TYPICAL ANGLE SECTION

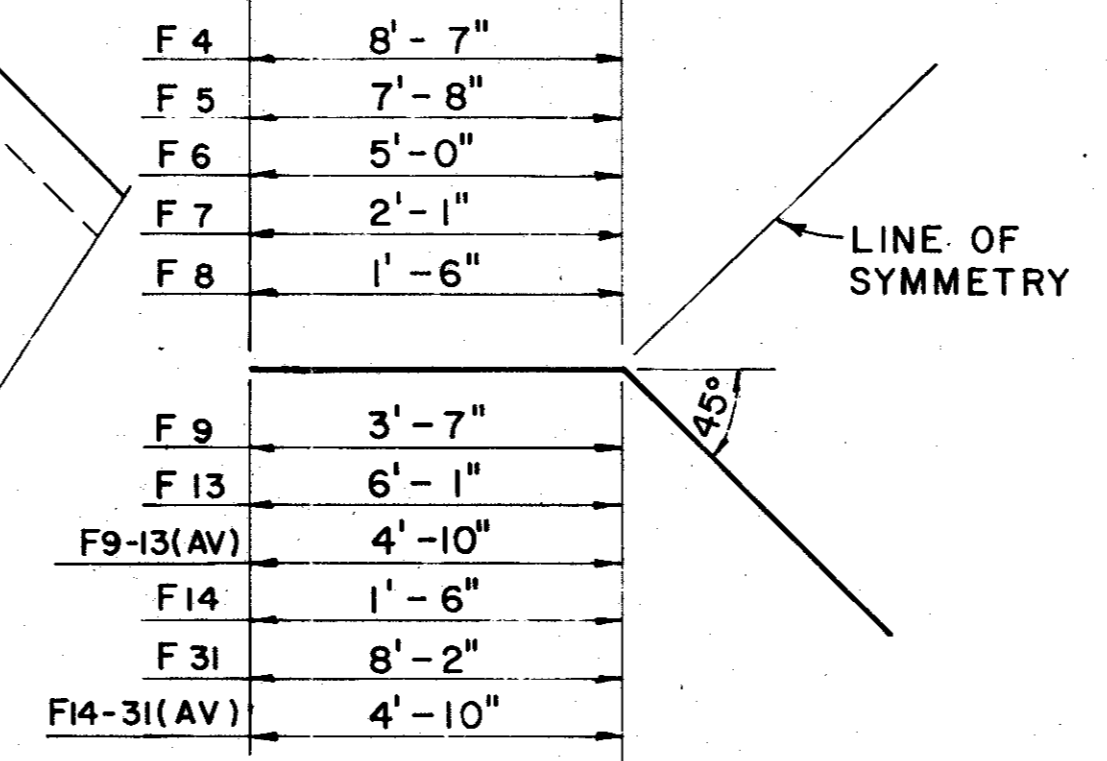


BARS B₂, B₄, LAP DETAIL

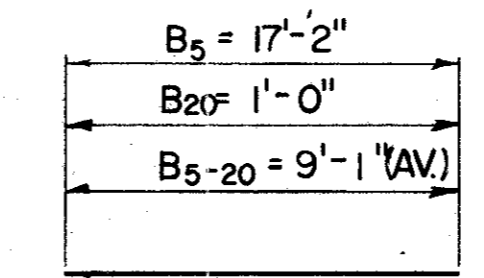


BARS Z

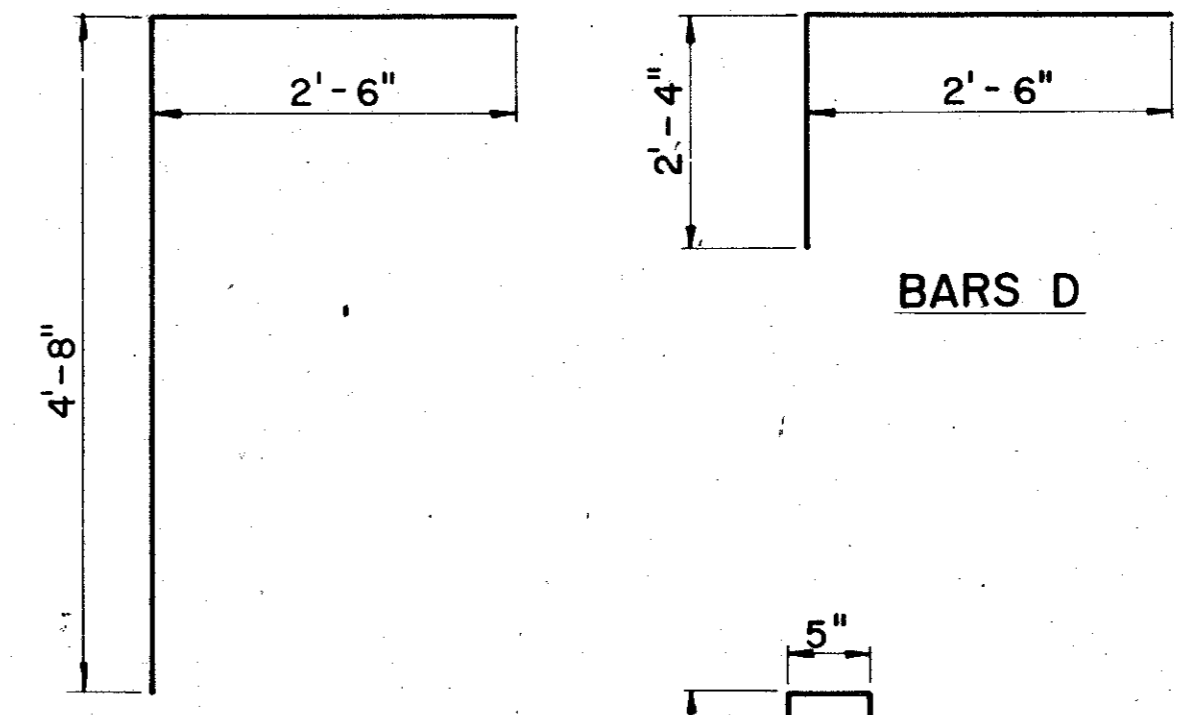
BARS Y



BARS F

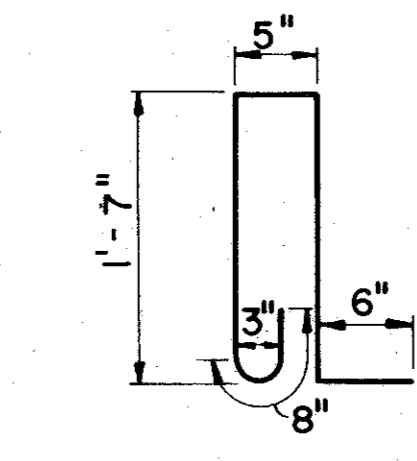


BARS B

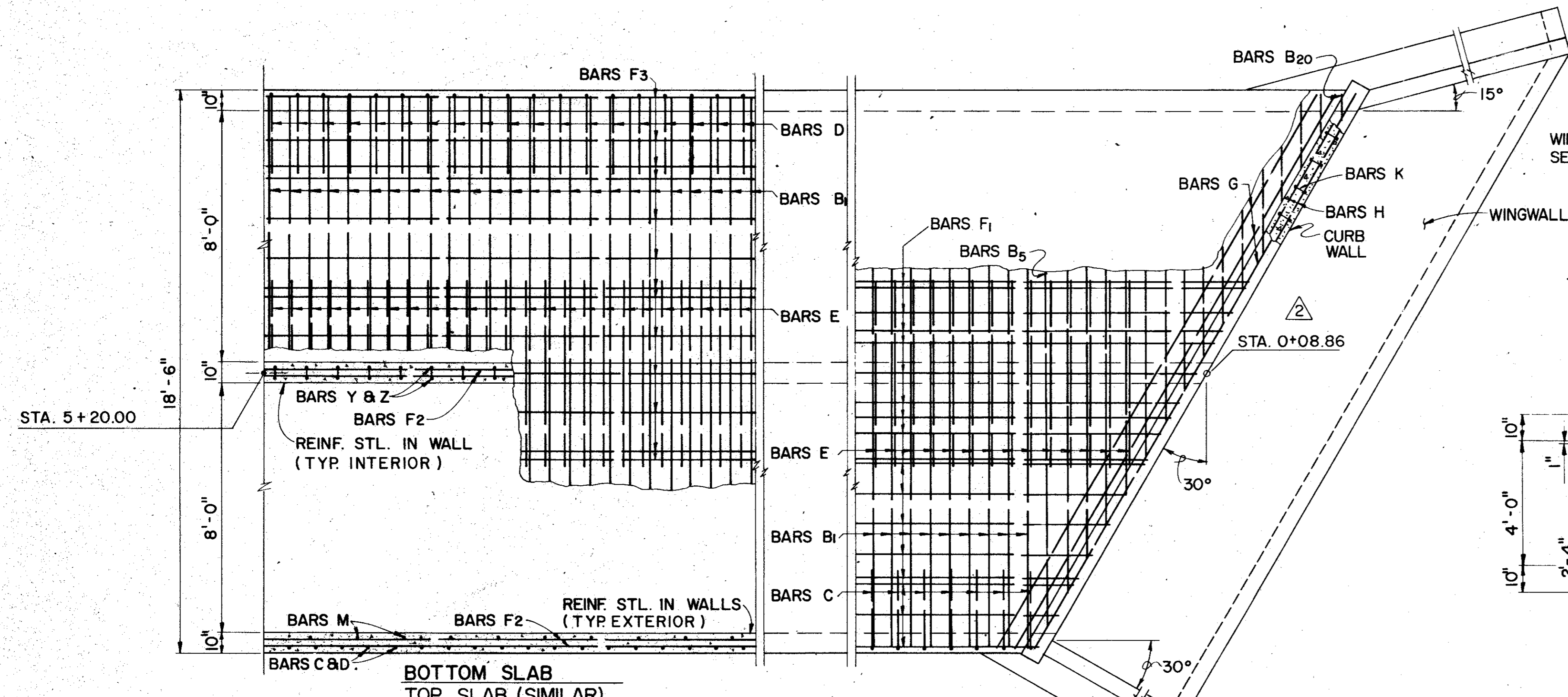


BARS C

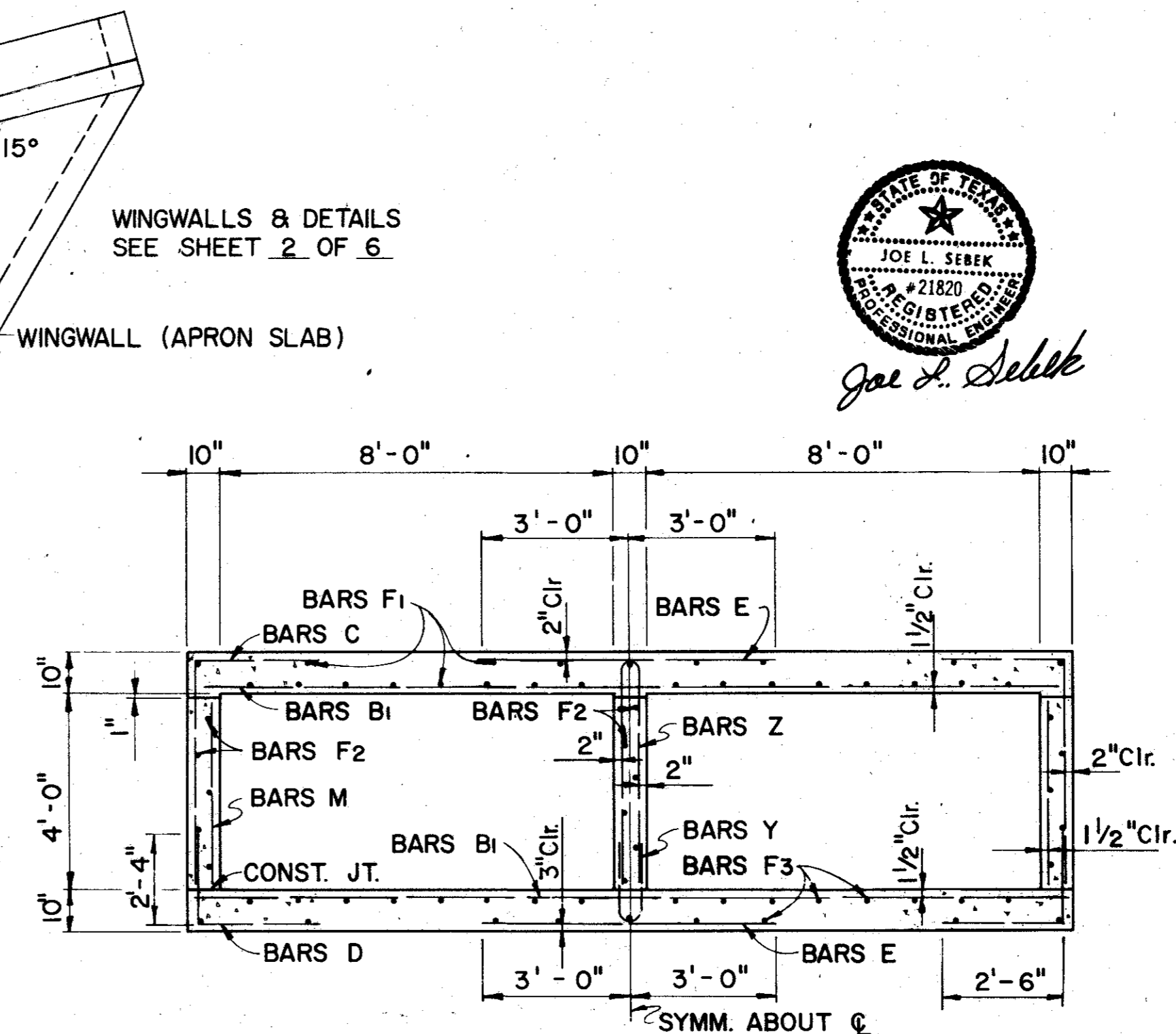
BARS D



BARS K



PART PLANS (BOX)



TYPICAL SECTION

BILL OF REINFORCING STEEL					
BARS	NO.	SIZE	SPACING	LENGTH	WEIGHT
B ₁	1512	#5	7 1/2"	18'-3"	28781
B ₂	110	#5	SHOWN	11'-7"	1329
B ₃	120	#5	SHOWN	10'-3"	1283
B ₄	50	#5	SHOWN	8'-8"	452
B _{5-20(AV)}	32	#5	SHOWN	9'-1"	303
C	1232	#6	10"	7'-2"	13262
D	1232	#6	10"	4'-10"	8944
E	1536	#6	8"	6'-0"	13842
*F ₁	25	#5	SHOWN	488'-1"	12727
**F ₂	16	#4	SHOWN	486'-1"	5188
*F ₃	25	#5	SHOWN	488'-1"	12727
F ₄	35	#4	SHOWN	17'-2"	401
F ₅	10	#5	SHOWN	15'-4"	160
F ₆	30	#4	SHOWN	10'-0"	200
F ₇	10	#5	SHOWN	4'-2"	43
F ₈	35	#4	SHOWN	3'-0"	70
F _{9-13(AV)}	50	#5	SHOWN	9'-8"	504
F _{14-31(AV)}	180	#5	SHOWN	9'-8"	1815
G	6	#5	8"	21'-0"	131
H	2	#4	SHOWN	21'-0"	28
K	22	#4	12"	4'-8"	69
M	684	#4	18"	3'-10"	1749
Y	512	#4	12"	4'-1"	1395
Z	512	#4	12"	9'-8"	3301

ESTIMATED QUANTITIES		
ITEM	UNIT	QUANTITY
REINFORCING STEEL	LB.	108,635
CLASS A CONCRETE (CULV.)	CY.	773.2
STRUCTURAL EXCAV. (CULV.)	CY.	2,686

- * INCLUDES (8)1'-3" SPLICES
- ** INCLUDES (8)1'-0" SPLICES
- △ INCLUDES (1) CURB WALL
- MAX. LENGTH

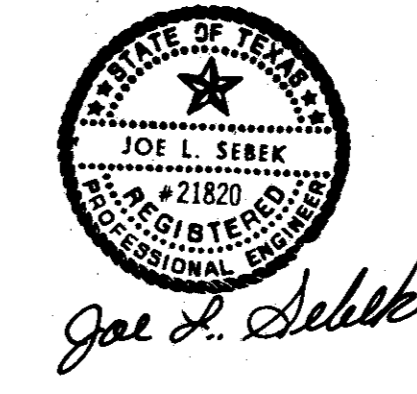
GENERAL NOTES:

DESIGN LOADING H 20 OR HS 20-44 TRAVELING PARALLEL AND PERPENDICULAR TO CENTER OF BOX CULVERT IN ACCORDANCE WITH AASHTO 1977 STANDARD AND INTERIM SPECIFICATIONS.

CONSTRUCTION JOINT SHOWN AT THE FLOW LINE MAY BE RAISED A MAXIMUM OF 6" AT THE CONTRACTORS OPTION. BARS M MAY BE CUT OFF OR RAISED, BARS C & D MAY BE REVERSED (D ON TOP) AND BARS Y & Z MAY BE REVERSED (Y ON TOP).

ALL REINFORCING STEEL SHALL BE GRADE 60. HORIZONTAL EARTH PRESSURE WAS ASSUMED TO BE 50#/SF LIQUID PRESSURE EQUIVALENT. CONCRETE SHALL BE CLASS "A" 3000psi AT 28 DAYS.

SEE SHEET 3 OF 6 FOR JUNCTION BOX (TRANSITION SECTION) DETAILS.



SHEET 1 OF 6

NO.	DATE	REVISION	APPROV.
9/82		Revised End Station & Estimated Quantities	
1	8/82	Revised per Change Order #2	

CITIES OF ADDISON AND FARMERS BRANCH, TEXAS

2 SPAN 8'x4' RC BOX CULVERT CULVERT DETAILS

Turner Collie & Braden Inc.
CONSULTING ENGINEERS
TEXAS ALUSTIN/DALLAS/EL PASO/HOUSTON/PORT ARTHUR
COLORADO DENVER/GRAND JUNCTION

UNIT	GALFIONE	Scale:	Horz. Vert.	Date	FEBRUARY 1982
Designed	JS	Checked	WNL	Job No.	6042-010 Contract
Drawn	RP	Approved		Sheet	56 of 66