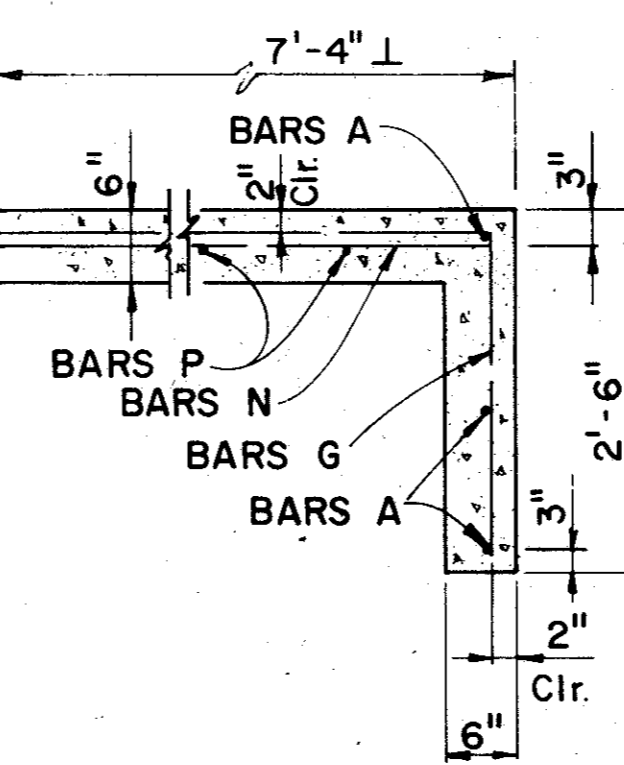
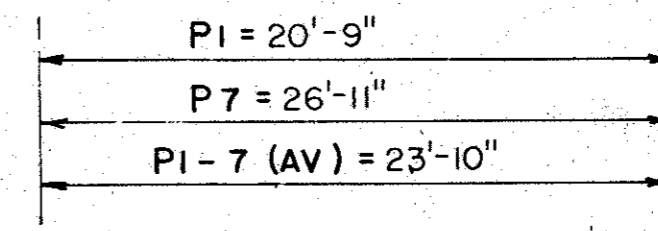


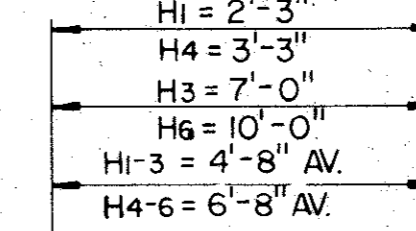
WINGWALL TOP DETAIL
(TYPICAL)



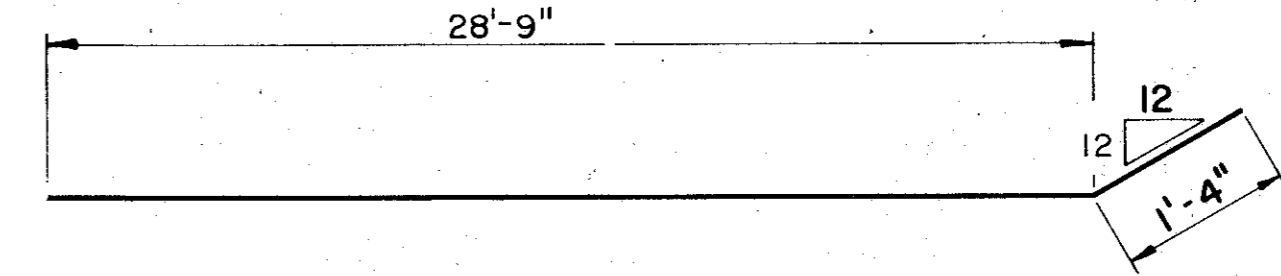
SECTION A-A



BARS P1 - P7

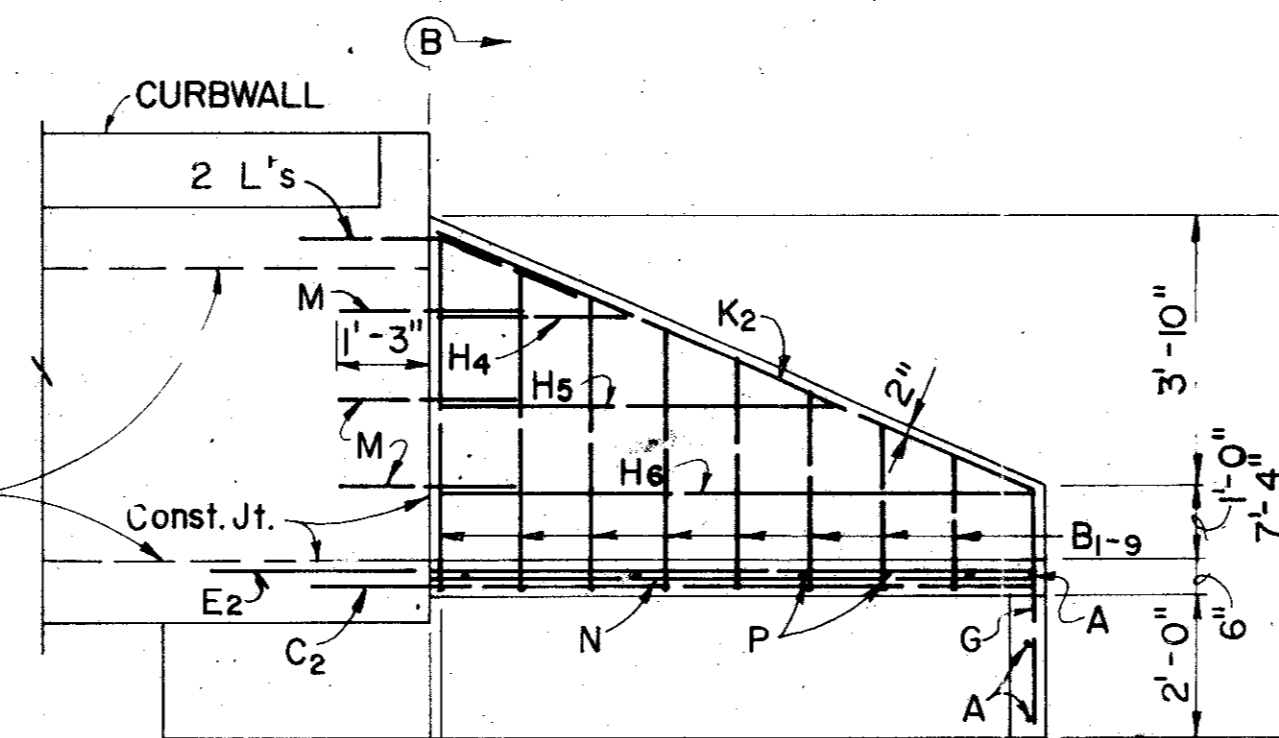


BARS H1 - H6

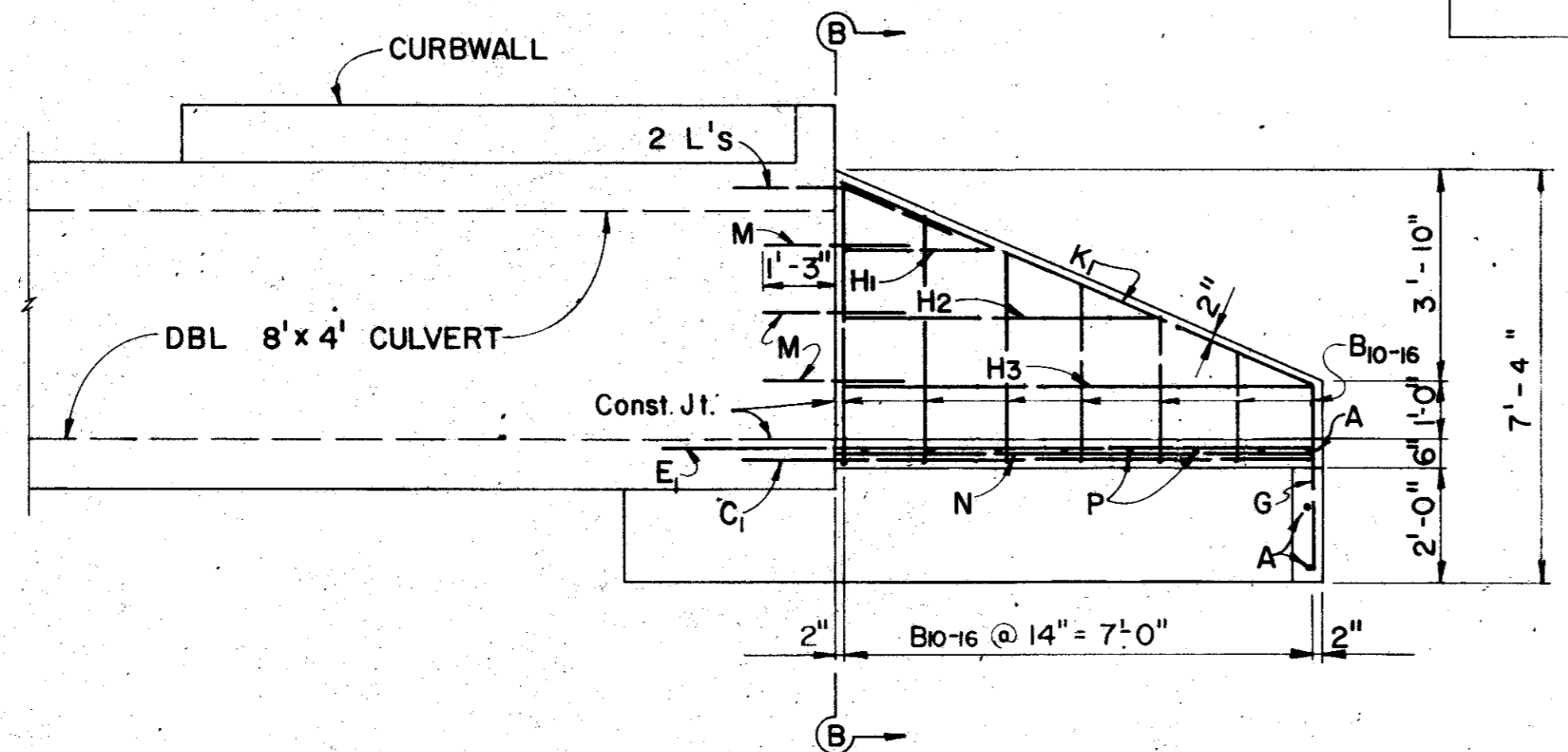


BARS B1 - B16

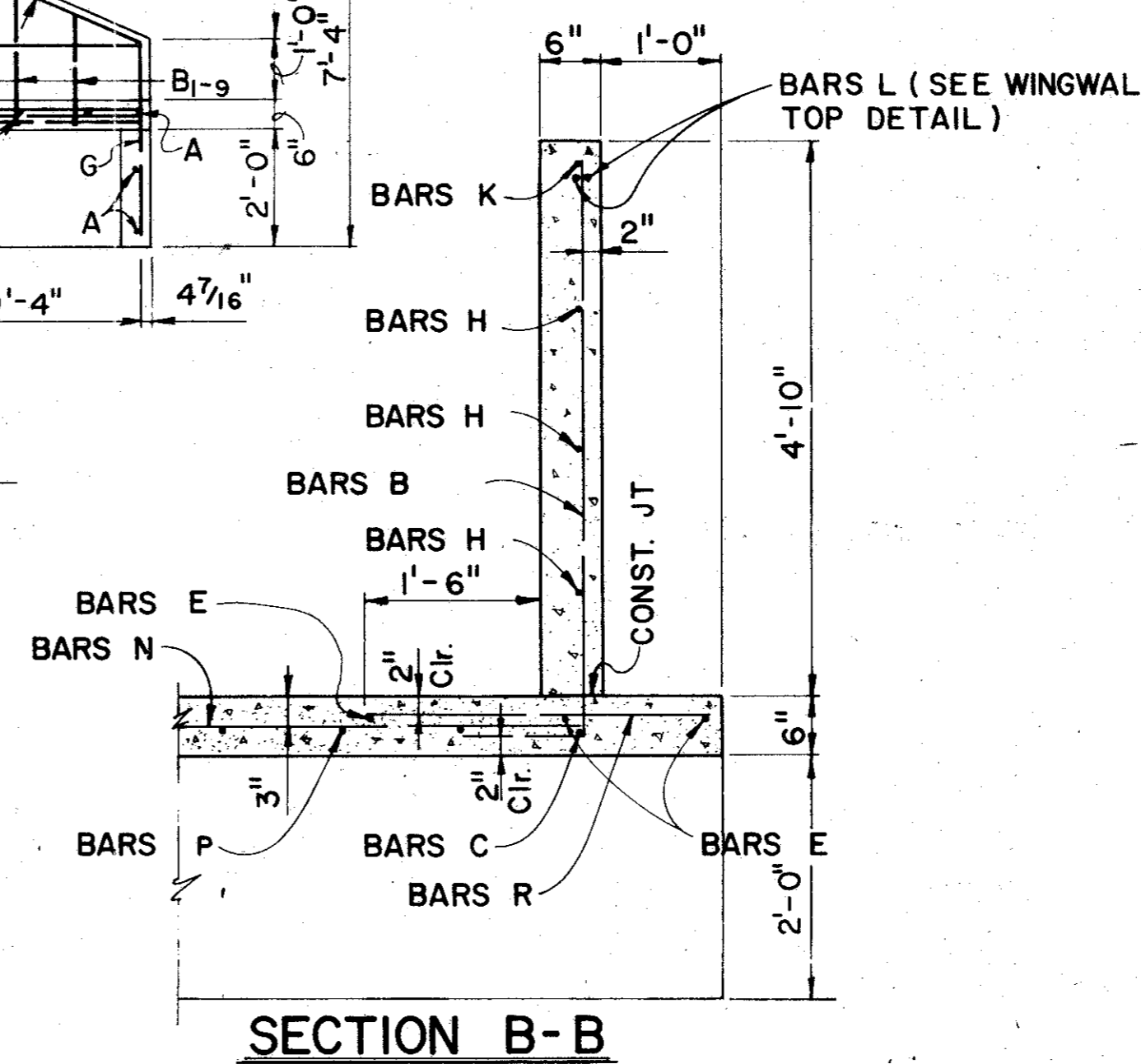
BARS G



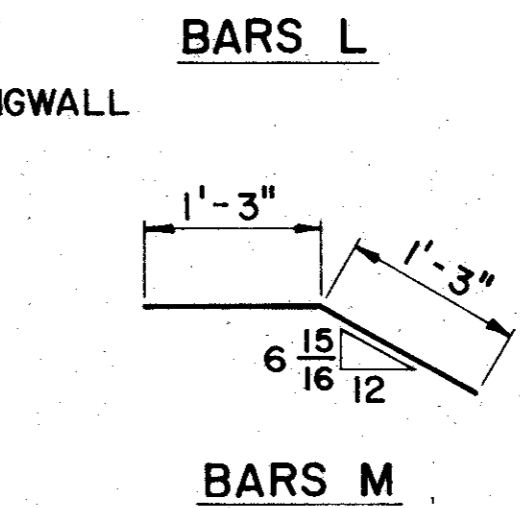
ELEVATION
9'-10 7/16" WINGWALL



ELEVATION
7'-4" WINGWALL



SECTION B-B



BARS L

BARS M

BILL OF REINFORCING STEEL

BAR	NO.	SIZE	SPACING	LENGTH	WEIGHT
A	3	#4	SHOWN	30'-1"	60
B1-9 AV.	9	#4	14"	4'-2"	25
B10-16 AV.	7	#4	14"	4'-2"	19
C1	1	#4	---	9'-0"	6
C2	1	#4	---	12'-0"	8
E1	3	#4	---	10'-3"	21
E2	3	#4	---	14'-6"	29
G	27	#4	14"	4'-3"	77
H1-3 AV.	3	#4	15"	4'-8"	9
H4-6 AV.	3	#4	15"	6'-8"	13
J	21	#5	12"	2'-6"	55
K1	1	#5	---	8'-0"	8
K2	1	#5	---	10'-8"	11
L	4	#5	SHOWN	4'-0"	17
M	3	#4	15"	2'-6"	5
#N	29	#4	12"	7'-0"	136
P1-7 AV.	7	#4	12"	23'-10"	111
R	16	#4	14"	2'-10"	30
S	3	#4	15"	2'-6"	5

ESTIMATED QUANTITIES

ITEM	UNIT	QUANTITY
CL. A CONCRETE (WINGWALL)	C.Y.	
REINFORCING STEEL	LB.	

* FIELD CUT BARS IN WEDGE TO FIT.

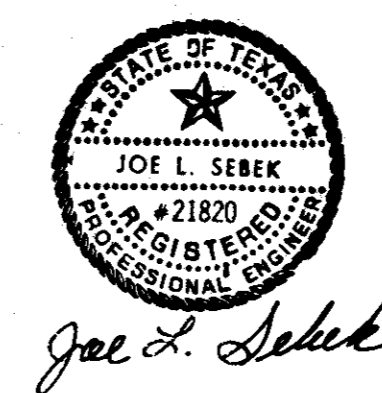
GENERAL NOTES:

- END CULVERT BOTTOM SECTION, WINGWALL FOOTINGS, AND APRON SLAB WITH TOE WALL SHALL BE PLACED IN ONE OPERATION.
- ALL REINFORCING STEEL SHALL BE GRADE HORIZONTAL EARTH PRESSURE WAS ASSUMED TO BE 50 #/SF EQUIVALENT LIQUID PREST CONCRETE SHALL BE CLASS "A" 3000psi 28 DAYS.

NO.	DATE	REVISION	APPROV.
2	8/82	Revised per Change Order # 2	
1	5/82	AS PER ADDENDUM NO. 1, ART. 16	

CITIES OF ADDISON AND FARMERS BRANCH, TEXAS
FLARED WINGWALLS FOR
2 SPAN 8'x4' RC BOX CULVERT
Turner Collie & Braden Inc.
CONSULTING ENGINEERS
TEXAS AUSTIN/DALLAS/EL PASO/HOUSTON/PORT ARTHUR
COLORADO DENVER/GRAND JUNCTION

Unit	Scale:	Hors. Vert.	Date
GALFIONE			FEBRUARY 1982
Designed JS	Checked WNL		Job No. 6042-010 Contract
Drawn RP	Approved		Sheet 57 of 66



Joe L. Serek