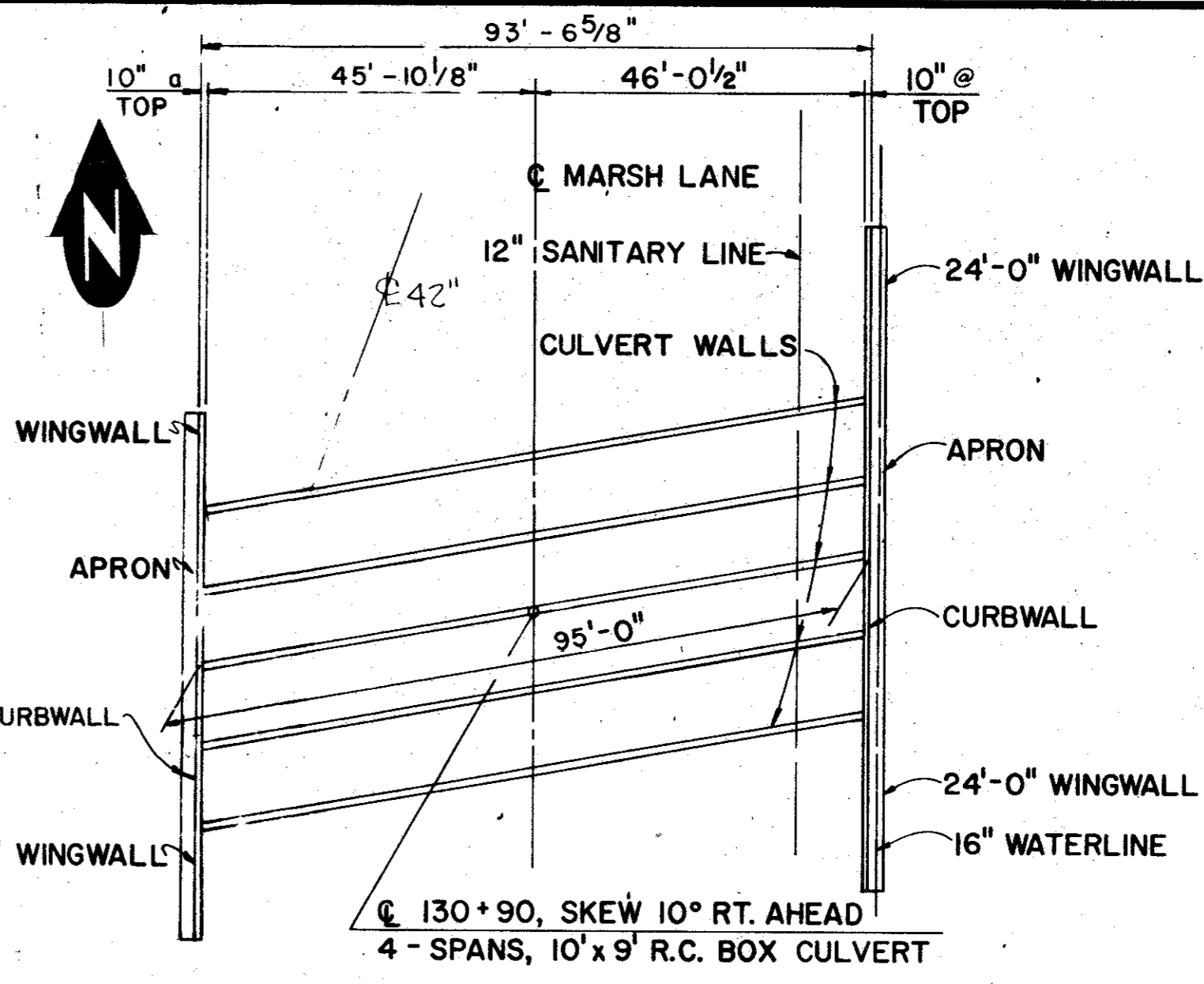
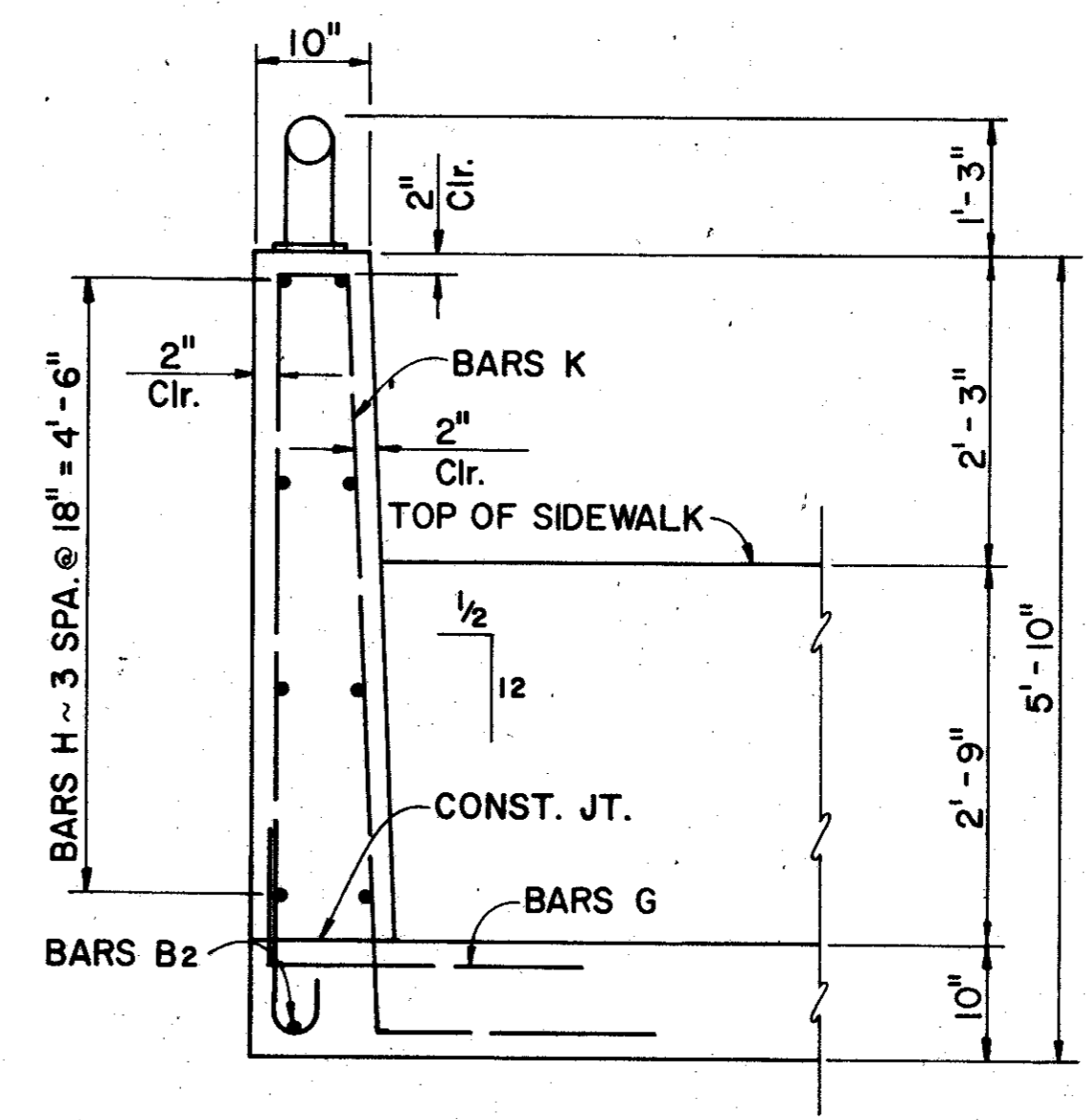


PLAN
SCALE: 3/8" = 1'-0"



CULVERT KEY PLAN



CURB WALL SECTION
SCALE: 3/4" = 1'-0"

BILL OF REINFORCING STEEL					
BAR	NO.	SIZE	SPACING	LENGTH	WEIGHT
B1	282	#6	7 1/2"	43'-5"	18,390
B2	4	#6	SHOWN	44'-0"	264
B3-13(AV)	22	#6	7 1/2"	23'-0"	760
C	288	#6	8"	12'-5"	5,371
D	288	#6	8"	5'-2"	2,235
E	744	#6	9"	6'-0"	6,705
*F1	61	#4	SHOWN	96'-8"	3,939
*F2	78	#4	SHOWN	96'-8"	5,037
*F3	61	#4	SHOWN	96'-8"	3,939
G	102	#6	10 1/2"	6'-0"	919
H	16	#4	18"	46'-6"	497
K	102	#6	10 1/2"	17'-1"	2,617
M	126	#4	18"	8'-1"	750
Y	285	#4	12"	4'-1"	777
Z	285	#4	12"	19'-5"	3,697
					55,897

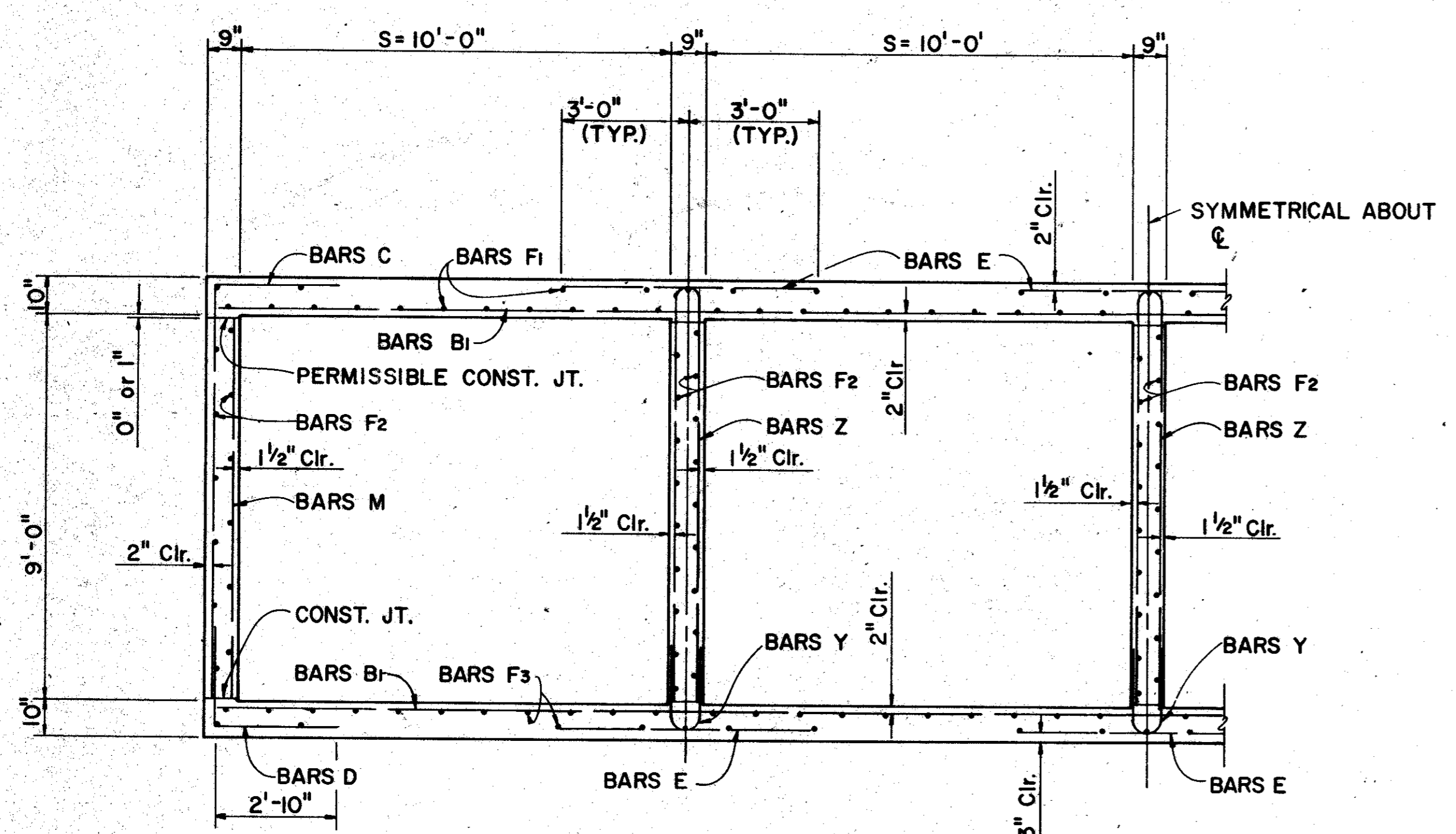
ESTIMATED QUANTITIES		
ITEM	UNIT	QUANTITY
**CLASS A CONCRETE (CULV)	CY	390.8
REINFORCING STEEL	LB	55,897
STRUCTURAL EXCAV. (CULV)	C.Y.	977

* INCLUDES 2'-1'-0" SPLICE
** INCLUDES CURBWALLS

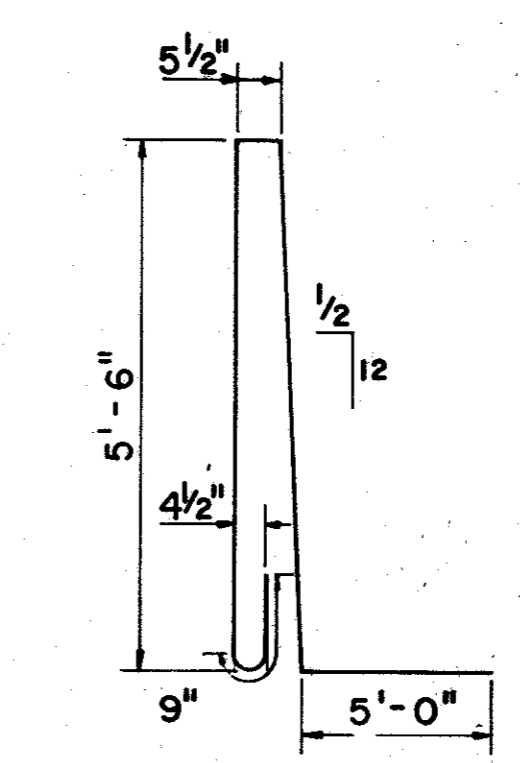
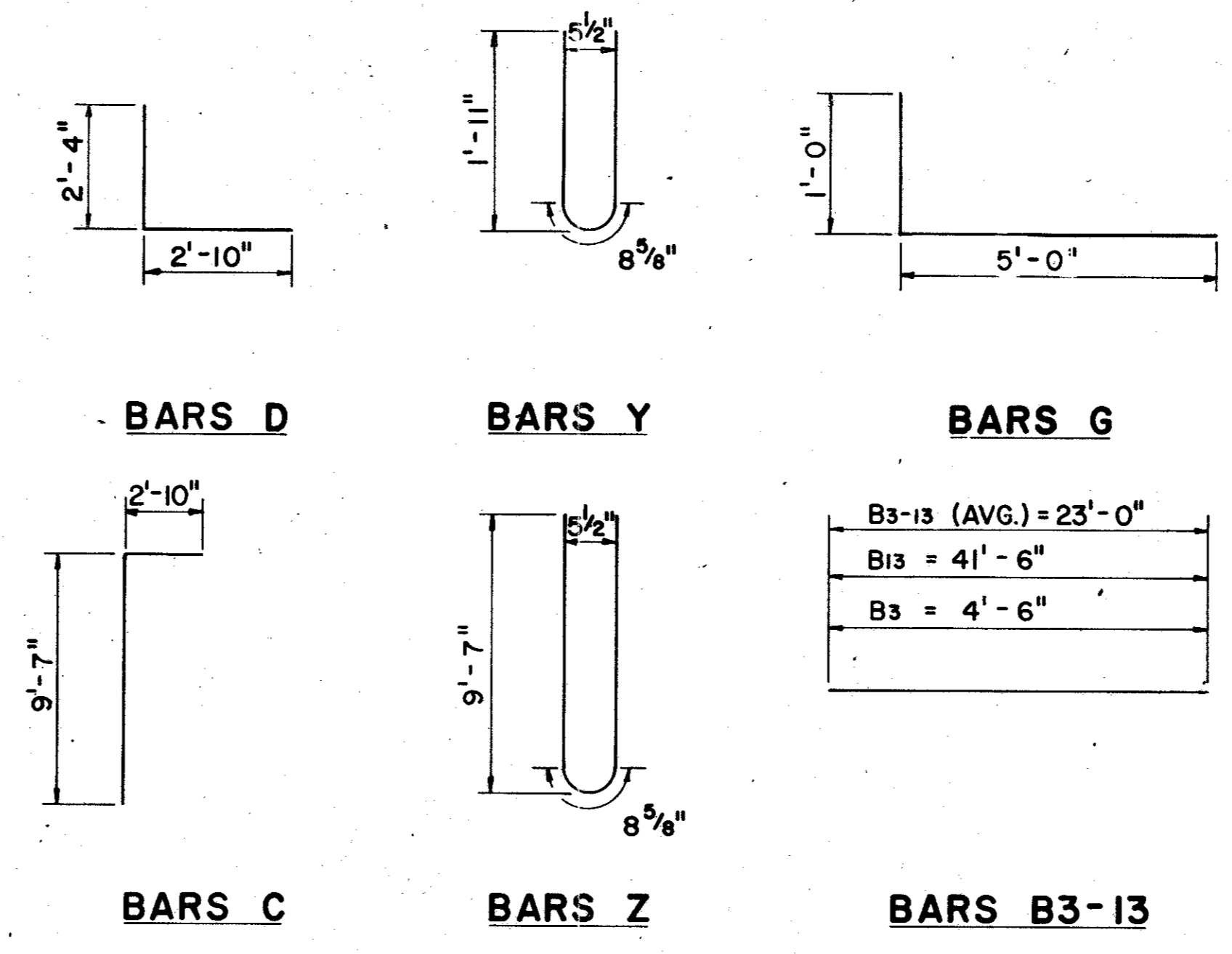
GENERAL NOTES:
DESIGN LOADING H20 OR H20-44 IN ACCORDANCE WITH AASHTO 1977 STANDARD AND INTERUM SPECIFICATION.

CONSTRUCTION JOINT SHOWN AT THE FLOW LINE MAY BE RAISED A MAXIMUM OF 6" AT THE CONTRACTOR'S OPTION. BARS M MAY BE CUT OFF OR RAISED, BARS C & D MAY BE REVERSED (D ON TOP) AND BARS Y & Z MAY BE REVERSED (Y ON TOP).

HORIZONTAL EARTH PRESSURE WAS ASSUMED TO BE 50 %f LIQUID PRESSURE EQUIVALENT. CONCRETE SHALL BE CLASS "A" 3000psi 28 DAYS. ALL REINFORCING STEEL SHALL BE GRADE 60.



TYPICAL HALF SECTION
SCALE: 3/8" = 1'-0"



BAR Y

SEE SHEET 5 OF 6 FOR WINGWALL DETAILS.
SEE SHEET 6 OF 6 FOR RAILING DETAILS.

4			
3			
2			
1	8/82	REVISED PER CHANGE ORDER NO 1	
NO	DATE	REVISION	APPROV.

CITIES OF ADDISON AND FARMERS BRANCH, TEXAS
4-SPAN 10' x 9' R.C. BOX CULVERT
CULVERT DETAILS

Turner Collie & Braden Inc.
CONSULTING ENGINEERS
TEXAS: AUSTIN, DALLAS, EL PASO, HOUSTON, PORT ARTHUR
COLORADO: DENVER, GRAND JUNCTION

Unit	GALFIONG	Scale:	AS NOTED	Date:	FEBRUARY, 1982
Designed	JS	Checked	WNL	Job No.	6042-010 Contract
Drawn	WW	Approved		Sheet	59 of 66

