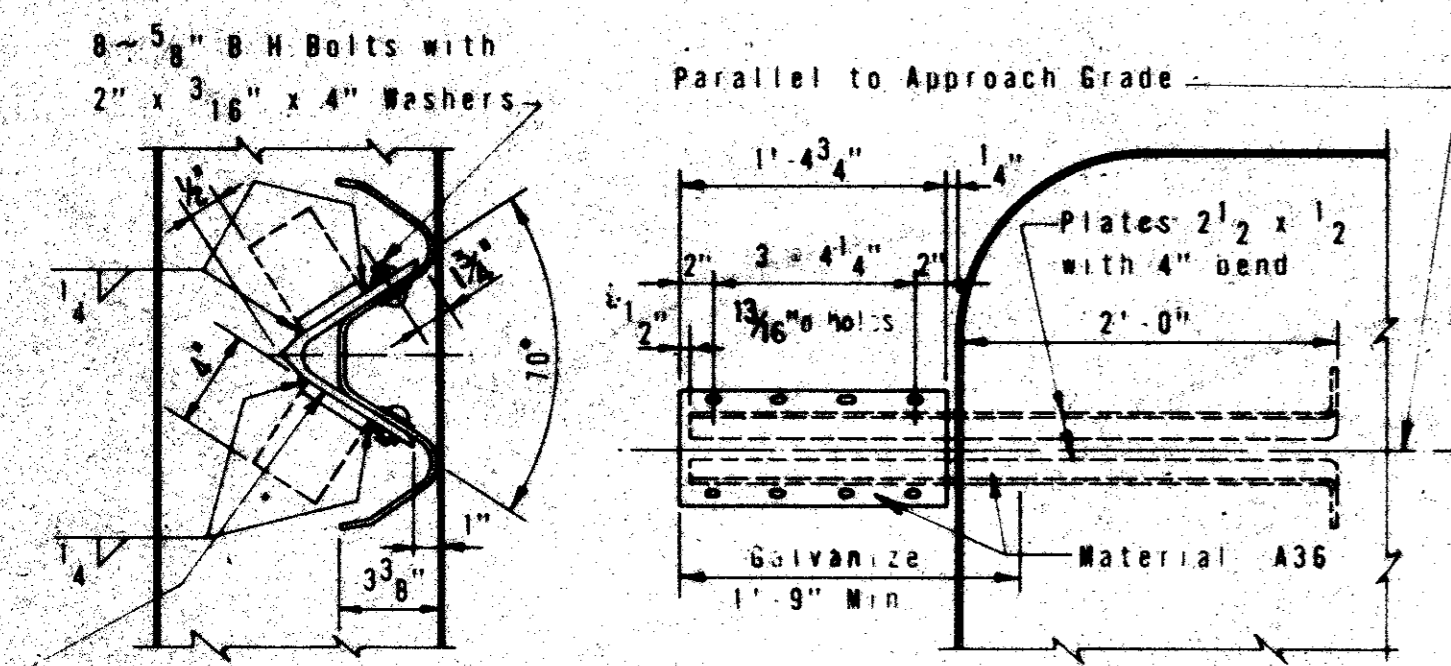
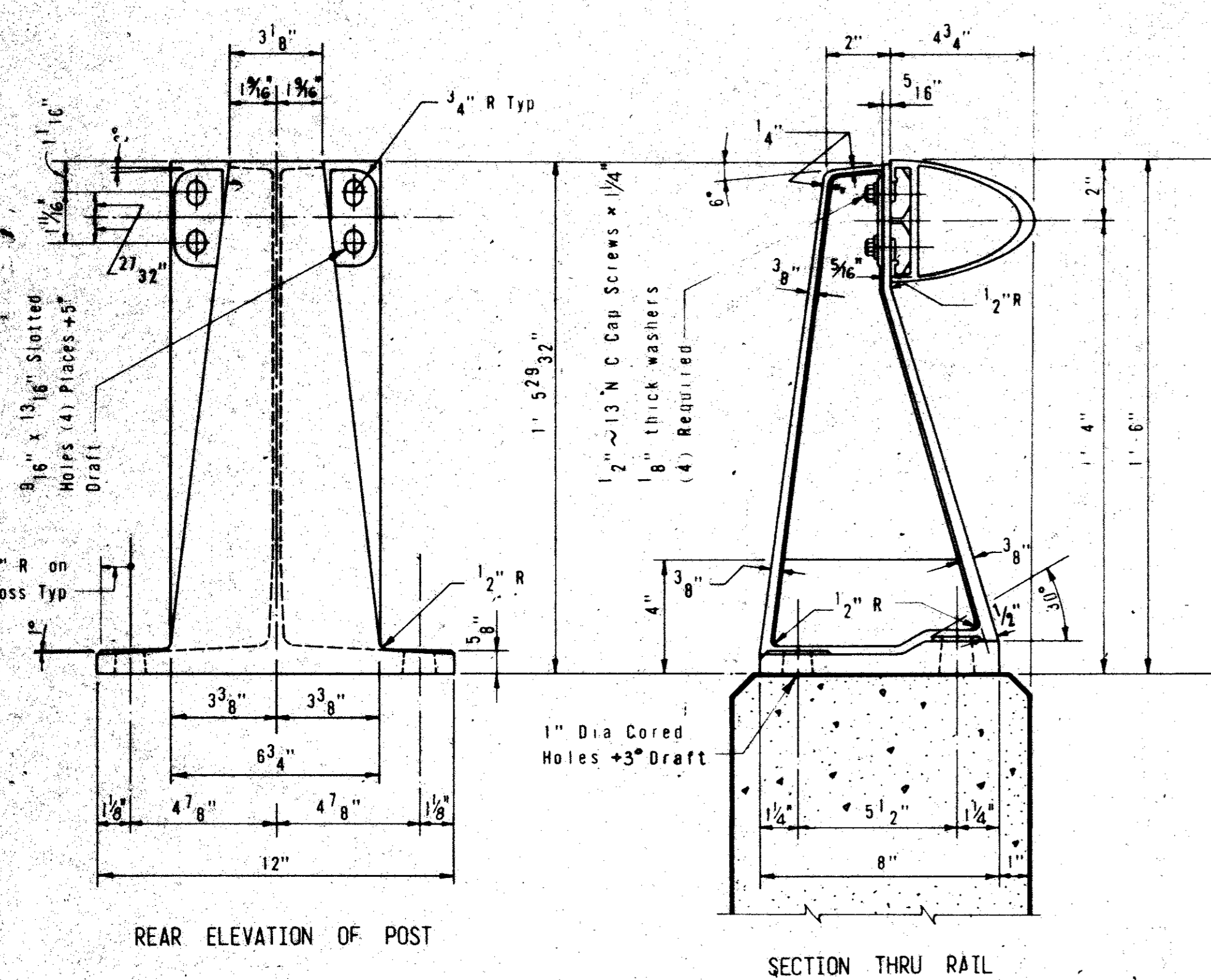


NOTE: METAL BEAM GUARD FENCE MUST BE ATTACHED TO THE ABUTMENT WING AND EXTENDED ALONG THE ROADWAY. SEE PLAN SHEET FOR DETAILS AND LENGTH FOR PAYMENT.

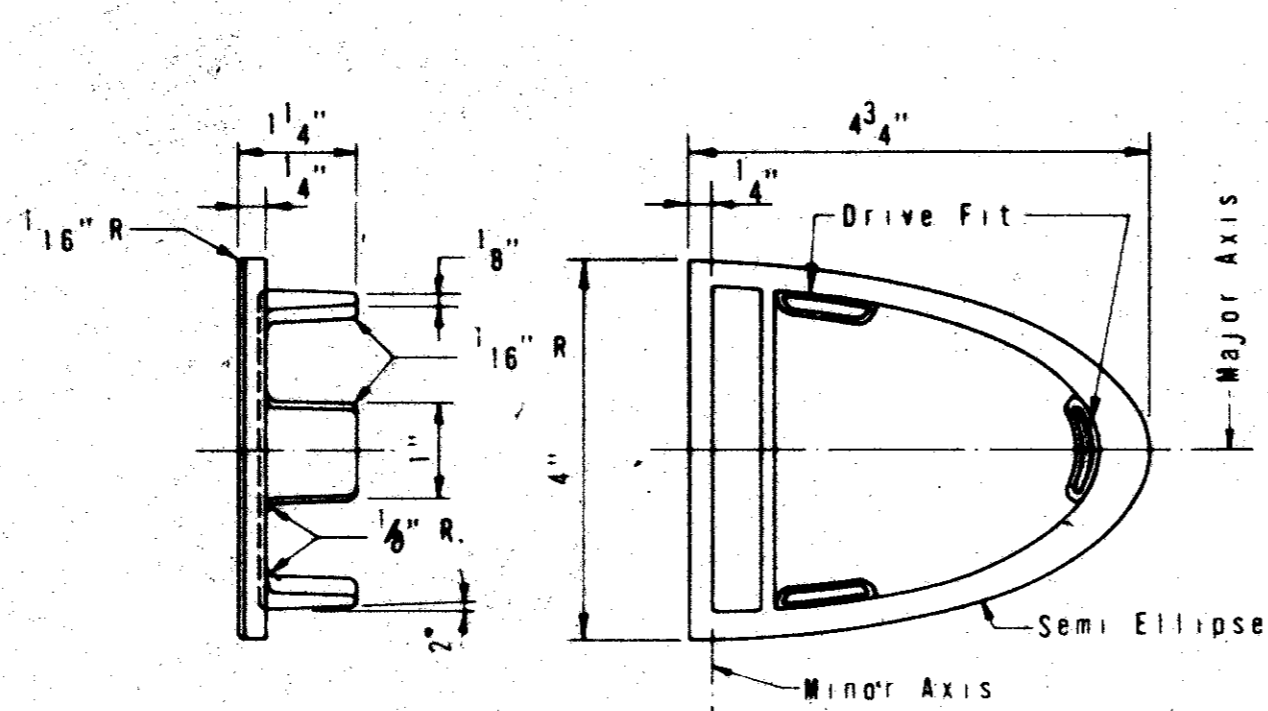
ROADWAY ELEVATION OF RAIL
(SYMMETRICAL ABOUT C)



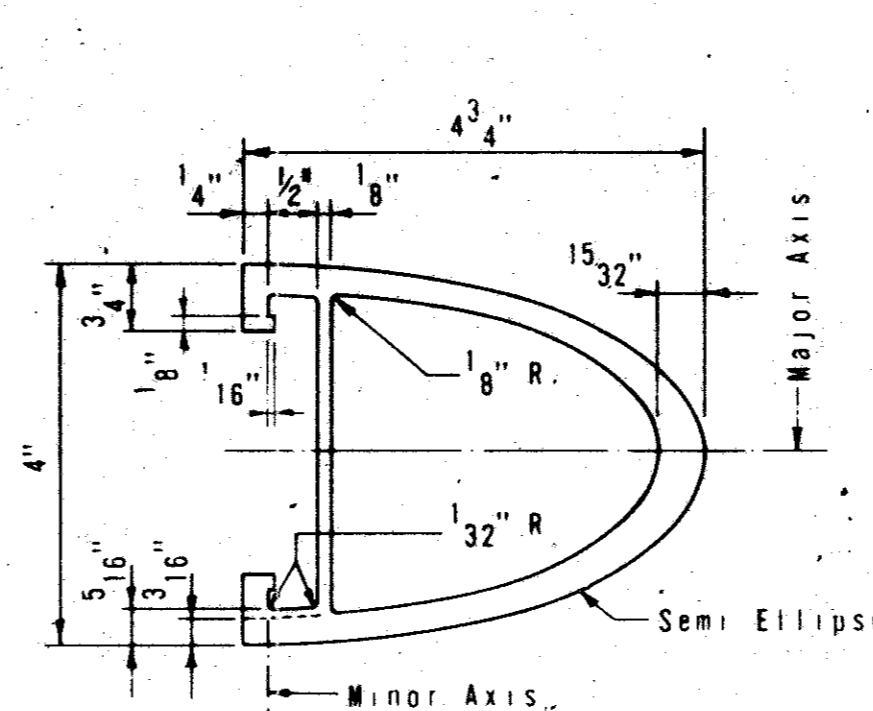
METAL BEAM GUARD FENCE ANCHORAGE



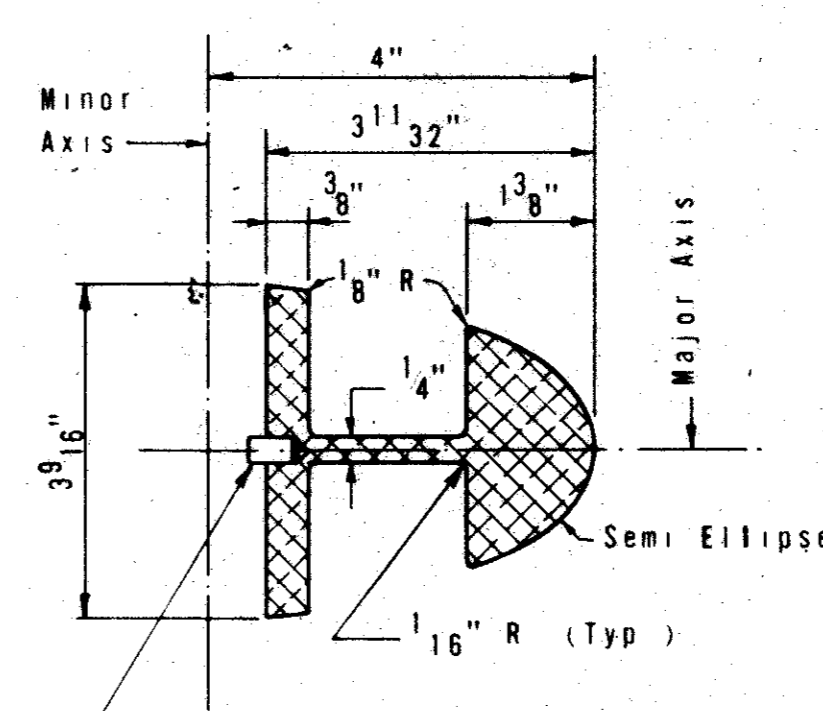
RAIL POST & ANCHORAGE DETAILS



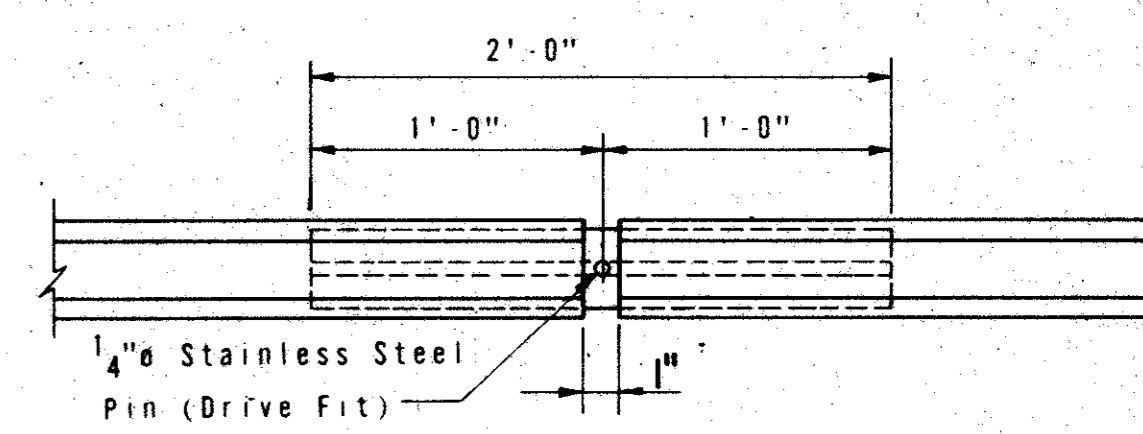
END PLUG DETAILS



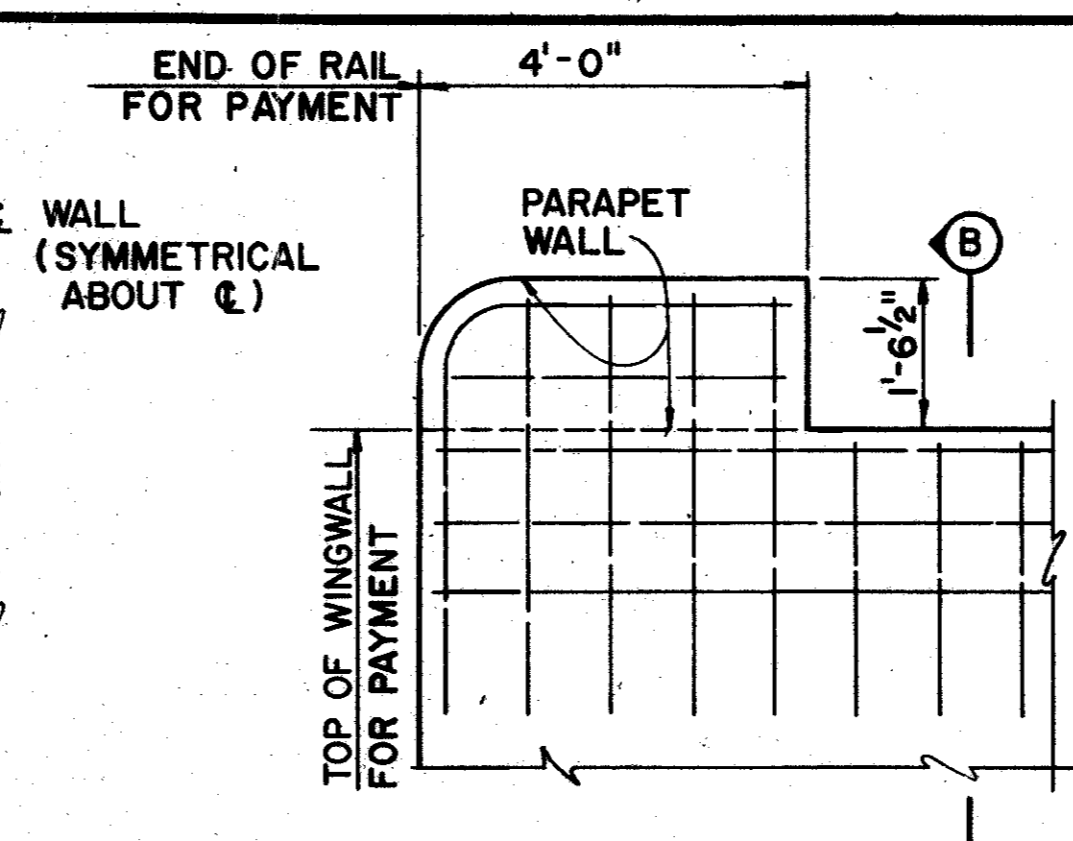
RAIL EXTRUSION



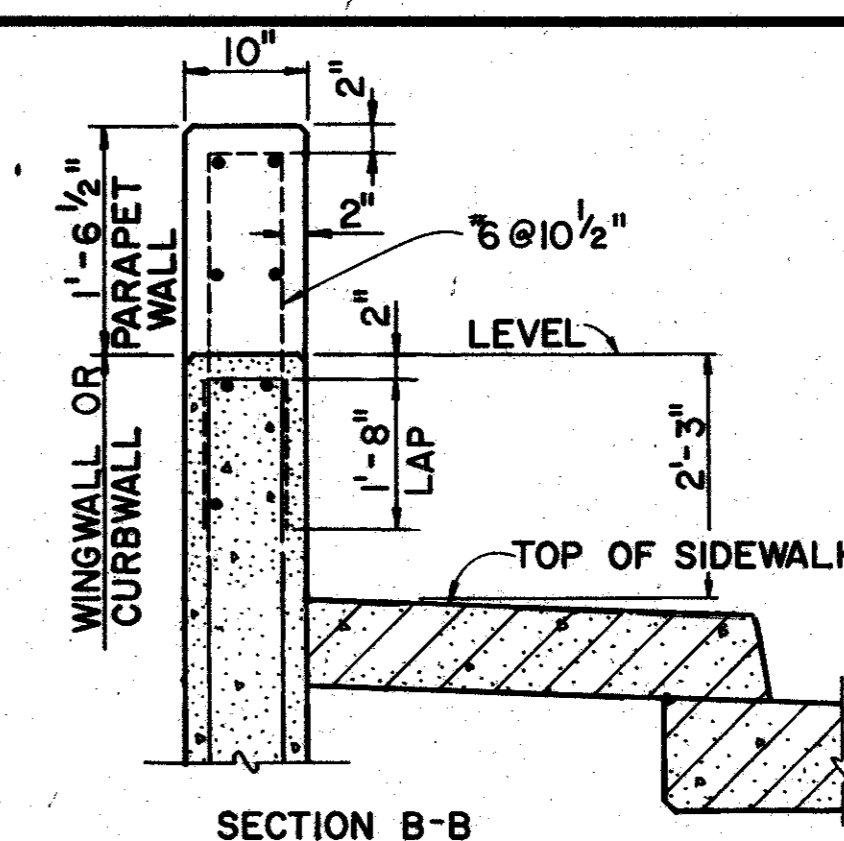
SEC. THRU SPLICE MEMBER



SPLICE DETAIL

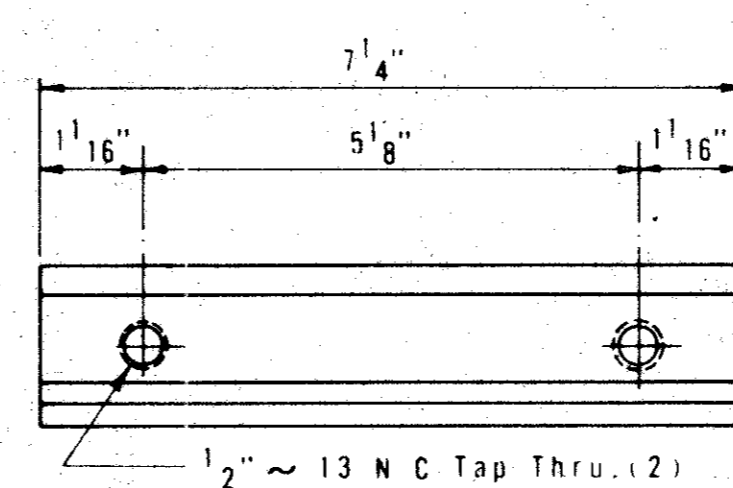


PARAPET WALL DETAILS

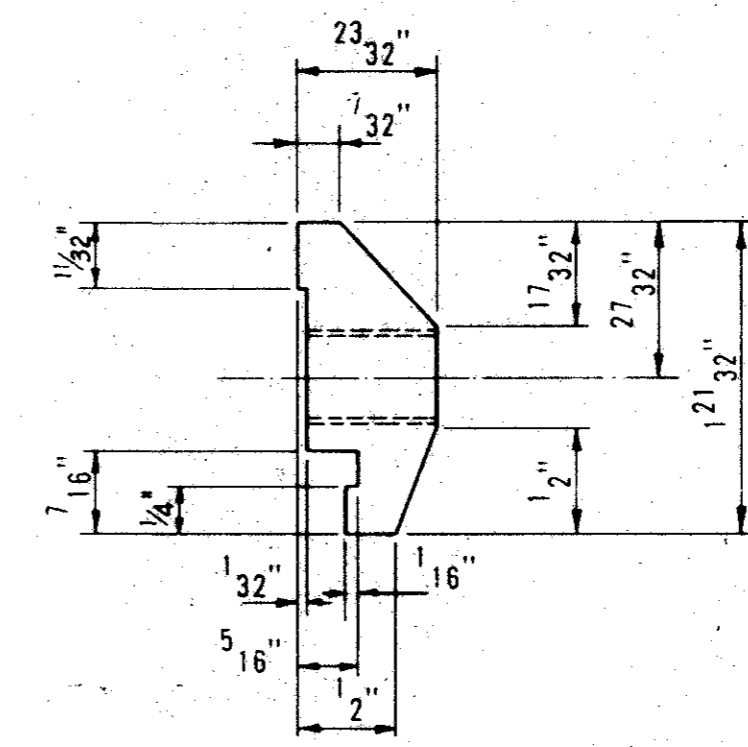


SECTION B-B

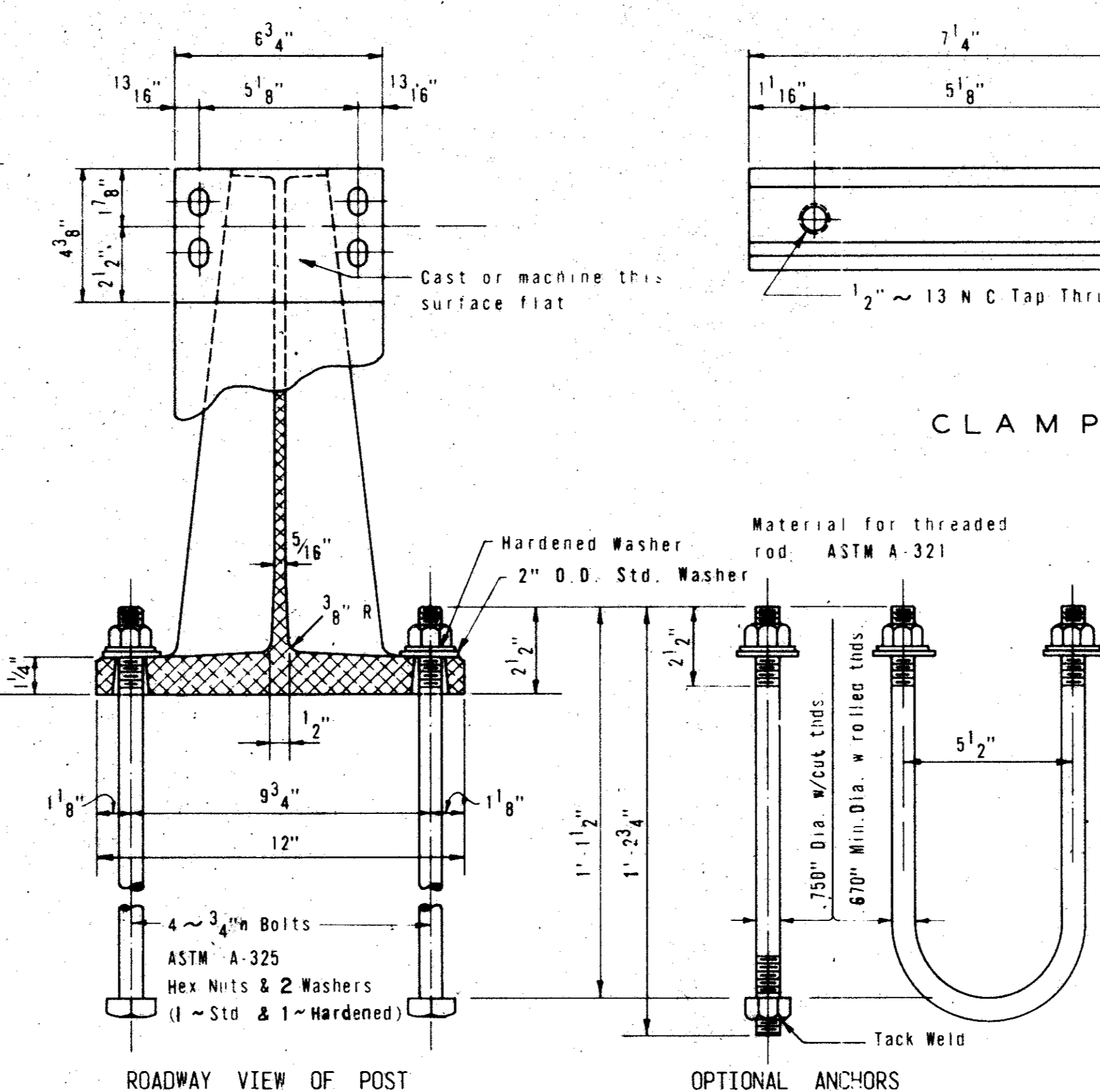
RAIL MEMBER DETAILS



CLAMP BAR DETAIL



PARTIAL PLAN OF UNDERSIDE
PERMISSIBLE RECESS IN POST BASE



ROADWAY VIEW OF POST

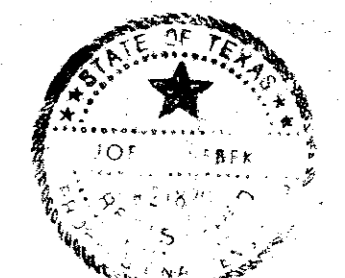
OPTIONAL ANCHORS

General Notes:
Designed according to AASHTO 1977 Standard and current Interim Specifications. All open ends of the rail shall be capped. Rail posts shall be set perpendicularly to top of wall. Panel lengths of rail shall be attached to a minimum of three posts. Anchor bolts to be galvanized after fabrication. Nuts and washers for Anchor Bolts shall conform to A325 requirements. Nuts may be tapped and chased after galvanizing. Bolts and nuts shall have Class 2A and 2B fit tolerances.

Posts shall be cast aluminum, alloy A444-T4. Material for rails shall be aluminum -ASTM B221 -alloy 6061-T6. Machine screws for rail attachment shall be stainless steel. For horizontal curves of radius less than 1000ft. the rail member shall be fabricated to follow the curvature of the roadway. Castings shall have a maximum draft of 3° and a minimum radius of fillet of 1/4" unless otherwise shown.

Unit bid price for Rail Type C4 includes: Concrete Parapet Wall, Metal Railing, Posts, Connectors, Anchor Bolts and M.B.G.F. Anchorage.

Concrete for parapet wall shall be Class A. Chamfer all exposed corners 3/4" unless otherwise shown.



Joe L. Selek

NO.	DATE	REVISION	APPROV.
1	5/82	AS PER ADDENDUM No 1, ART. 17	
2			
3			
4			

CITIES OF ADDISON AND FARMERS BRANCH, TEXAS
4-SPAN 10'x9' RC. BOX CULVERT
C4 ALUMINUM RAIL DETAILS

Turner Collie & Braden Inc.
CONSULTING ENGINEERS
TEXAS AUSTINDALLASSEL PASOHOUSTONPORT ARTHUR
COLORADO DENVERGRAND JUNCTION

UNIT	GALFIONE	Scale:	Horz. Vert.	Date	MARCH, 1982
Designed	SHD	Checked	WNL	Job No.	6042-010 Contract
Drawn	WW	Approved		Sheet	61 of 66