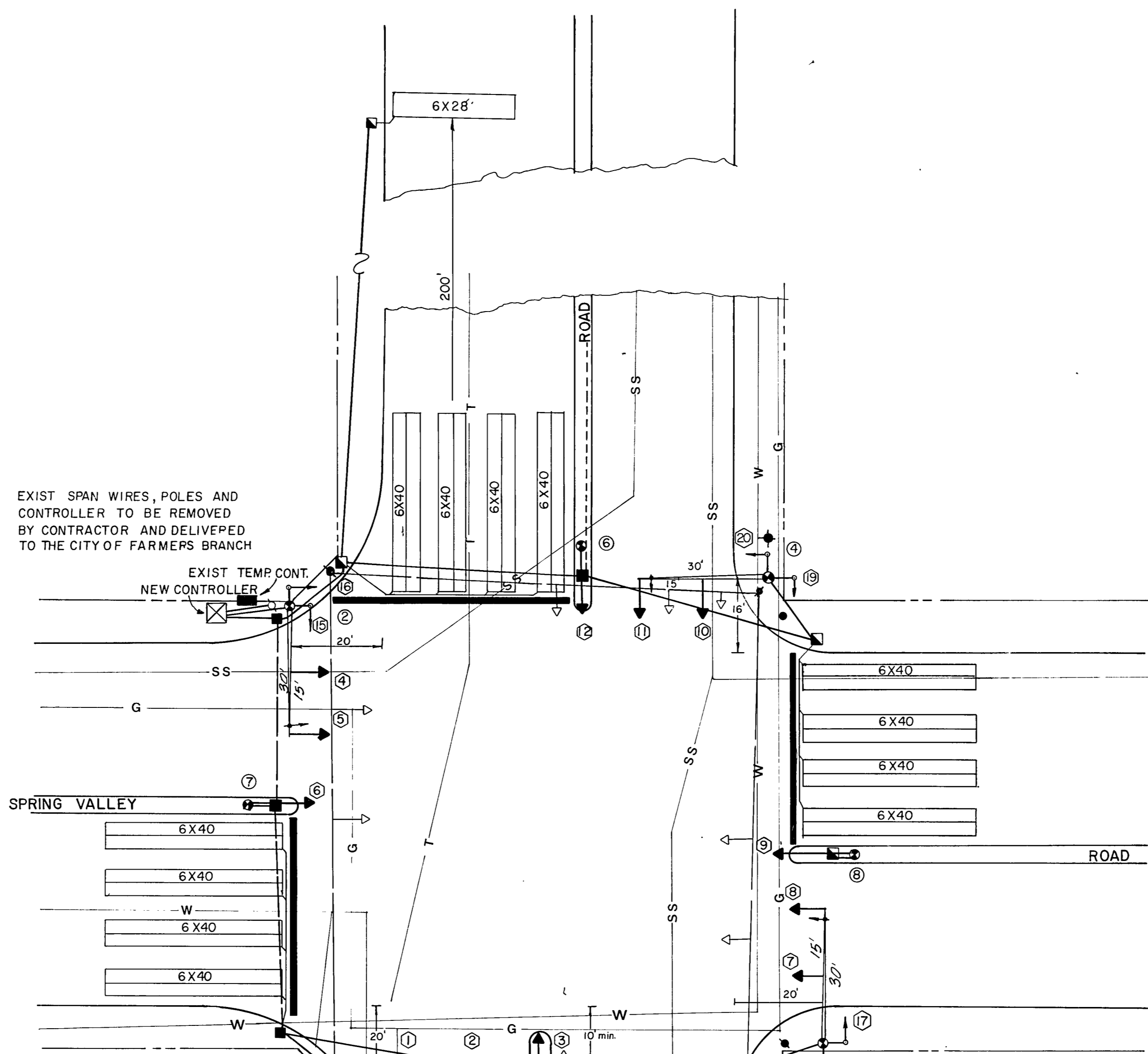


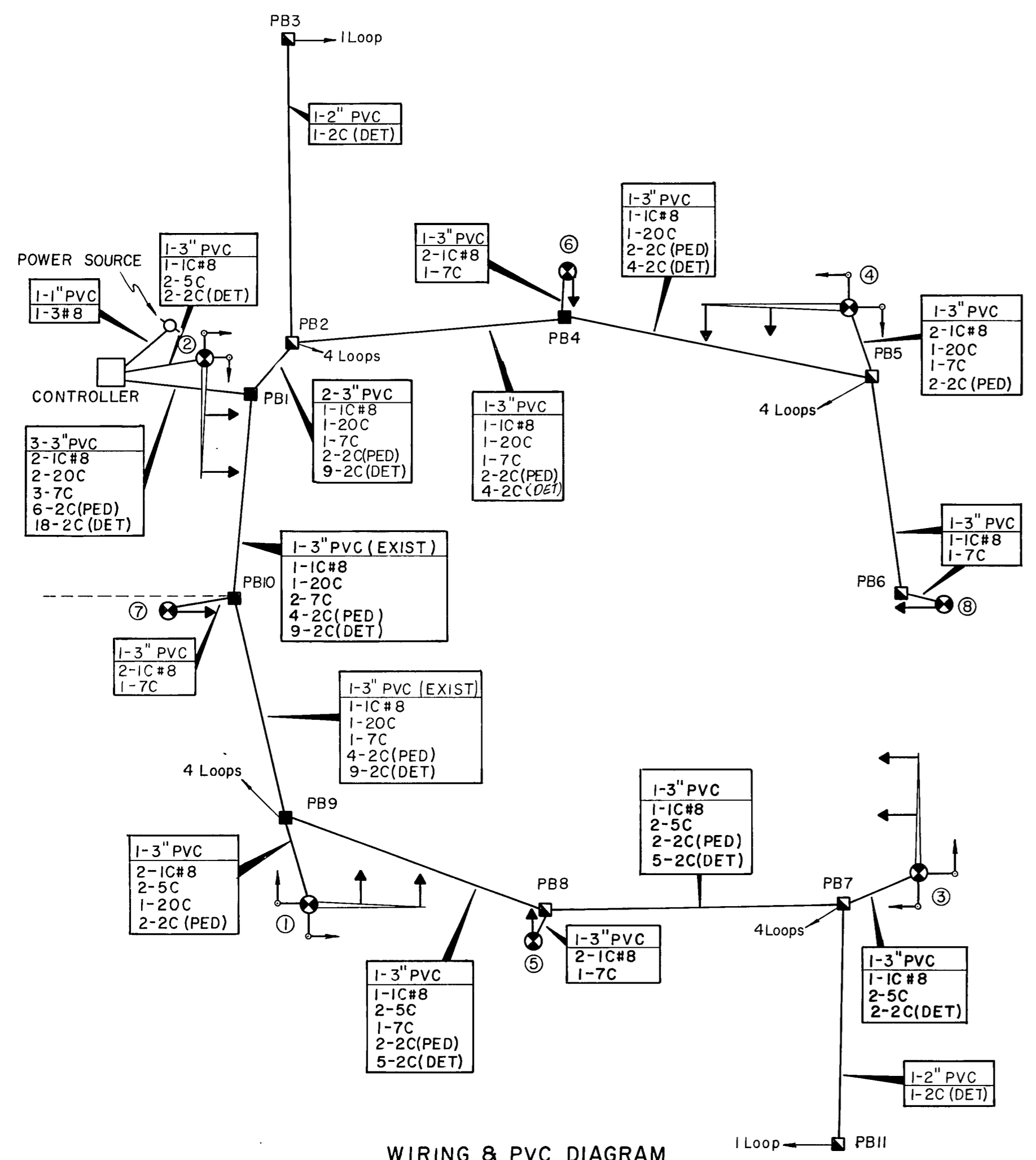
**CONDUIT & CABLE QUANTITIES**

| FROM          | TO   | DISTANCE | PVC CONDUIT T-TRENCH P-PUSHED | CABLE     |          |     |        |        |       |        |       |
|---------------|------|----------|-------------------------------|-----------|----------|-----|--------|--------|-------|--------|-------|
|               |      |          |                               | SWITCHING | DETECTOR | GRD | LOOP   | POWER  |       |        |       |
|               |      |          |                               | 5C        | 7C       | 20C | 2C PED | 2C DET | 1C #8 | 1C #12 | 3C #8 |
| Q             | 2    | 10'      | 1-1" T-25'                    |           |          |     |        |        |       |        | 45'   |
| Q             | 2    | 15'      | 1-3" T-25'                    | 50        |          |     | 60     |        | 25    |        |       |
| Q             | PB1  | 10'      | 3-3" T-15'                    | 60        | 40       | 120 | 360    | 40     |       |        |       |
| PB1           | PB2  | 20'      | 2-3" T-20'                    | 25        | 25       | 25  | 225    | 25     | 10I2  |        |       |
| PB2           | PB3  | 200'     | 1-2" T-200'                   |           |          |     | 205    |        | 90    |        |       |
| PB2           | PB4  | 55'      | 1-3" T-55'                    | 60        | 60       | 120 | 240    | 60     |       |        |       |
| PB4           | 6    | 5'       | 1-3" T-10'                    | 10        |          |     |        |        | 20    |        |       |
| PB4           | PB5  | 55'      | 1-3" T-55'                    | 60        | 120      | 240 | 60     | 972    |       |        |       |
| PB5           | 4    | 20'      | 1-3" T-25'                    | 25        | 25       | 50  |        | 50     |       |        |       |
| PB5           | PB6  | 45'      | 1-3" P-45'                    | 50        |          |     |        | 50     |       |        |       |
| PB6           | 8    | 5'       | 1-3" T-10'                    | 10        |          |     |        | 10     |       |        |       |
| PB1           | PB10 | 40'      | ---                           | 90        | 45       | 180 | 405    | 45     |       |        |       |
| PB10          | 7    | 5'       | 1-3" T-10'                    | 10        |          |     |        | 20     |       |        |       |
| PB10          | PB9  | 50'      | ---                           | 55        | 55       | 220 | 495    | 55     | 992   |        |       |
| PB9           | 1    | 20'      | 1-3" T-20'                    | 50        | 25       | 60  | 50     | 50     |       |        |       |
| PB9           | PB8  | 60'      | 1-3" P-60'                    | 130       | 65       | 130 | 325    | 65     |       |        |       |
| PB8           | 5    | 5'       | 1-3" T-10'                    | 10        |          |     |        | 20     |       |        |       |
| PB8           | PB7  | 50'      | 1-3" P-50'                    | 110       |          | 110 | 275    | 55     | 992   |        |       |
| PB7           | 3    | 15'      | 1-3" T-20'                    | 40        |          | 50  | 20     |        |       |        |       |
| PB7           | PB11 | 200'     | 1-2" T-200'                   |           |          |     | 205    |        | 670   | 4058   | 45    |
| <b>TOTALS</b> |      |          |                               | 380       | 470      | 335 | 1450   | 2770   | 670   | 4058   | 45    |



**QUANTITIES**

| ITEM                                       | DESCRIPTION                              | UNIT | QUANT. |
|--|--|------|--------|
| <b>CONDUIT:</b>                            |  |      |        |
|  | 1-3" PVC TRENCH                          | LF   | 185    |
|  | 1-3" PVC PUSH                            |      | 210    |
|  | 2-3" PVC TRENCH                          |      | 20     |
|  | 3-3" PVC TRENCH                          |      | 15     |
|  | 1-2" PVC TRENCH                          | LF   | 400    |
|  | 1-1" PVC TRENCH                          |      | 25     |
| <b>PULL BOX</b>                            |  |      |        |
|  |  | EA   | 6      |
| <b>CABLE WIRE</b>                          |  |      |        |
|  | 5 CONDUCTOR #12                          | LF   | 380    |
|  | 7 " #12                                  |      | 470    |
|  | 20 " #12                                 |      | 335    |
|  | 2 " #12 (PED. DET)                       |      | 1450   |
|  | 2 " SHIELDED LOOP LEAD                   |      | 2770   |
|  | 1 " #8 GROUND                            |      | 670    |
|  | 3 " #8 POWER                             |      | 45     |
|  | LOOP WIRE #12 XHHW                       | LF   | 4058   |
| <b>PEDESTRIAN PUSH BUTTON</b>              |  |      |        |
|  |  | PR   | 4      |
| <b>3-M OPTICOM DETECTOR</b>                |  |      |        |
|  |  | EA   | 4      |
| <b>LOOP DETECTOR AMPLIFIER</b>             |  |      |        |
|  |  | EA   | 18     |
| <b>FOUNDATIONS:</b>                        |  |      |        |
|  | SIGNAL CONTROLLER                        | EA   | 1      |
|  | TYPE A POLES                             | EA   | 4      |
|  | TYPE B "                                 | EA   | 1      |
|  | TYPE C "                                 | EA   | 4      |
| <b>POLES:</b>                              |  |      |        |
|  | PEDESTAL                                 | EA   | 4      |
|  | MAST ARM ASSEMBLY w/20' ARM              |      | 1      |
|  | " w/25' ARM                              |      | 1      |
|  | " w/30' ARM                              | EA   | 4      |
|  | " w/35' ARM                              |      | 1      |
|  | 4 SECTION 12" SIGNAL HEAD w/1 DUAL ARROW | EA   | 4      |
|  | 3 SECTION 12" SIGNAL HEAD                |      | 8      |
|  | 1 " PEDESTRIAN HEAD                      | EA   | 8      |
| <b>CONTROLLER - 8 PHASE FULLY ACTUATED</b> |  |      |        |
|  | w/3M OPTICOM PRE-EMPT                    | EA   | 1      |
| <b>POWER SUPPLY</b>                        |  |      |        |
|  | 12" PLASTIC STOP BAR (60mil.)            | EA   | 1      |
|  | RETRO-REFLECTIVE                         | LF   | 190    |
|  | REMOVE EXIST SPAN WIRE CONTROLLER        | LS   | 1      |



**WIRING & PVC DIAGRAM**

**SIGNAL ARRAYS**

| HEAD NUMBERS          | 1,2   | 4,5   | 3,12  | 13,14 | 17,18 |
|-----------------------|-------|-------|-------|-------|-------|
|                       | 10,11 | 7,8   | 6,9   | 15,16 | 19,20 |
| LENS SIZE             | 12"   | 12"   | 12"   | 12"   | 12"   |
| TYPE                  | Conv. | Conv. | Conv. | Ped.  | Ped.  |
| LENS CONFIGURATION    | R     | R     | R     | DW    | DW    |
|                       | Y     | Y     | Y     | WALK  | WALK  |
|                       | G     | G     | G     |       |       |
| Total Number of Units | 4     | 4     | 4     | 4     | 4     |

\* One Section Pedestrian Head (WINKO-MATIC Model VI-2L-AG or Equal)  
 \* Dual Arrow Fiber Optics - Amber/Green Arrow (WINKO-MATIC Model AFO-12 or Equal)

- ① INSTALL SIGNAL MAST ARM & POLE
- ➔ INSTALL TRAFFIC SIGNAL HEAD
- ➔ INSTALL PEDESTRIAN BUTTON
- ➔ INSTALL OPTICOM DETECTOR ONE-DIRECTION
- INSTALL SIGNAL PULL BOX
- EXISTING SIGNAL PULL BOX
- INSTALL CONTROLLER & FOUNDATION
- POWER POLE - SERVICE SOURCE
- INSTALL PEDESTRIAN SIGNAL POLE
- INSTALL PVC CONDUIT
- EXISTING PVC CONDUIT
- W-SS-T-G- EXISTING U.G. UTILITIES - WATER - SAN. SEW. - TEL. - GAS
- |||| STORM SEWER

UNDER CONTRACT BY  
**H.B. JONES**  
 Consulting Engineers Garland, Texas

|  |                |                   |               |
|--|----------------|-------------------|---------------|
| No.  | Revision       | By                | Date          |
| CITIES OF ADDISON & FARMERS BRANCH<br>DALLAS COUNTY, TEXAS |                |                   |               |
| <b>TRAFFIC SIGNAL INSTALLATION</b>                         |                |                   |               |
| INTERSECTION LAYOUT<br>SPRING VALLEY ROAD AND MIDWAY ROAD  |                |                   |               |
| <b>GINN, INC.</b><br>Consulting Engineers Dallas, Texas    |                |                   |               |
| Designed - HBJ   | Drawn - R.G.B. | Date - SEPT. 1983 | Job No. -     |
| Approved - HBJ   | Checked - HBJ  | Scale - 1"=20'    | Sheet 8 of 14 |