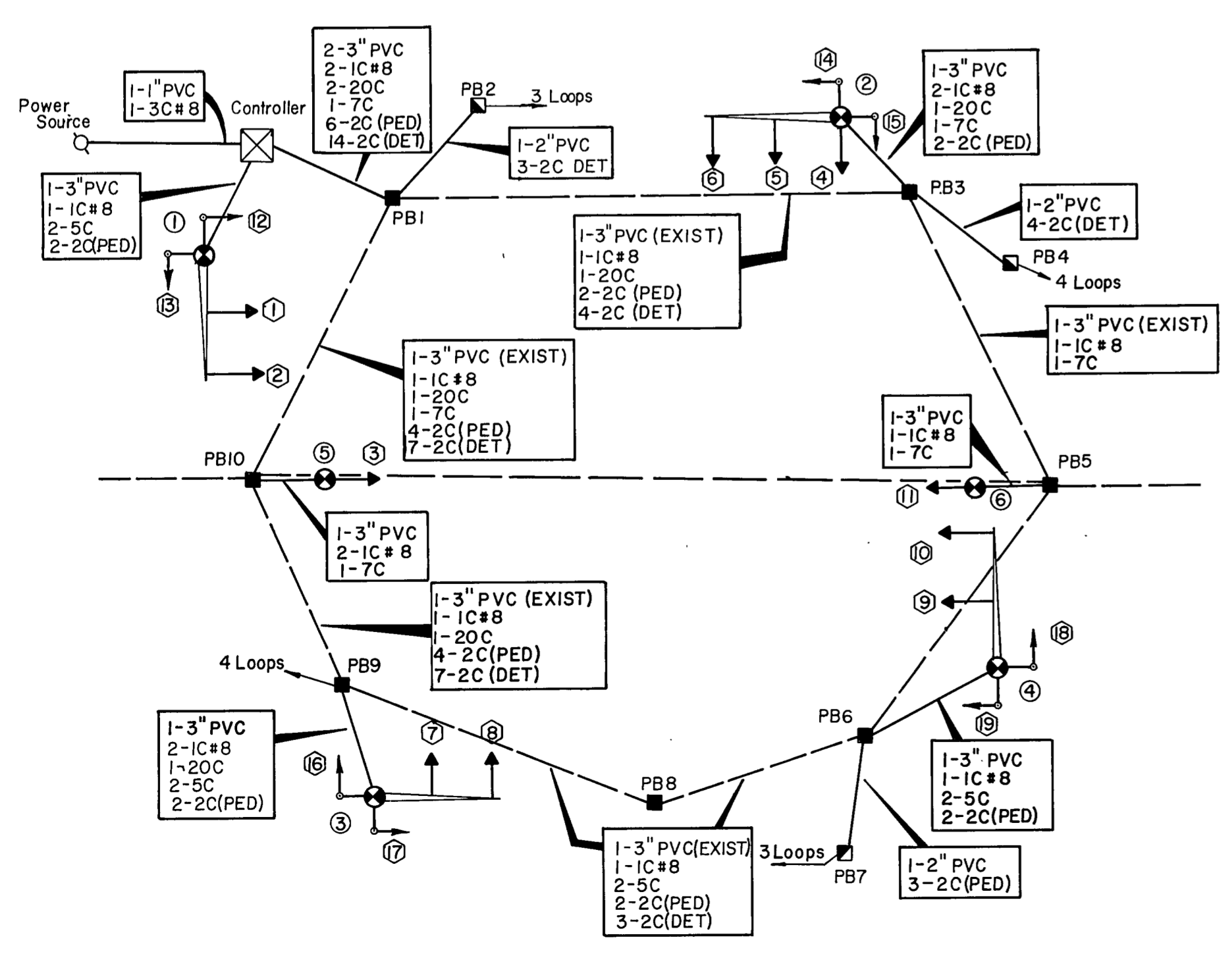
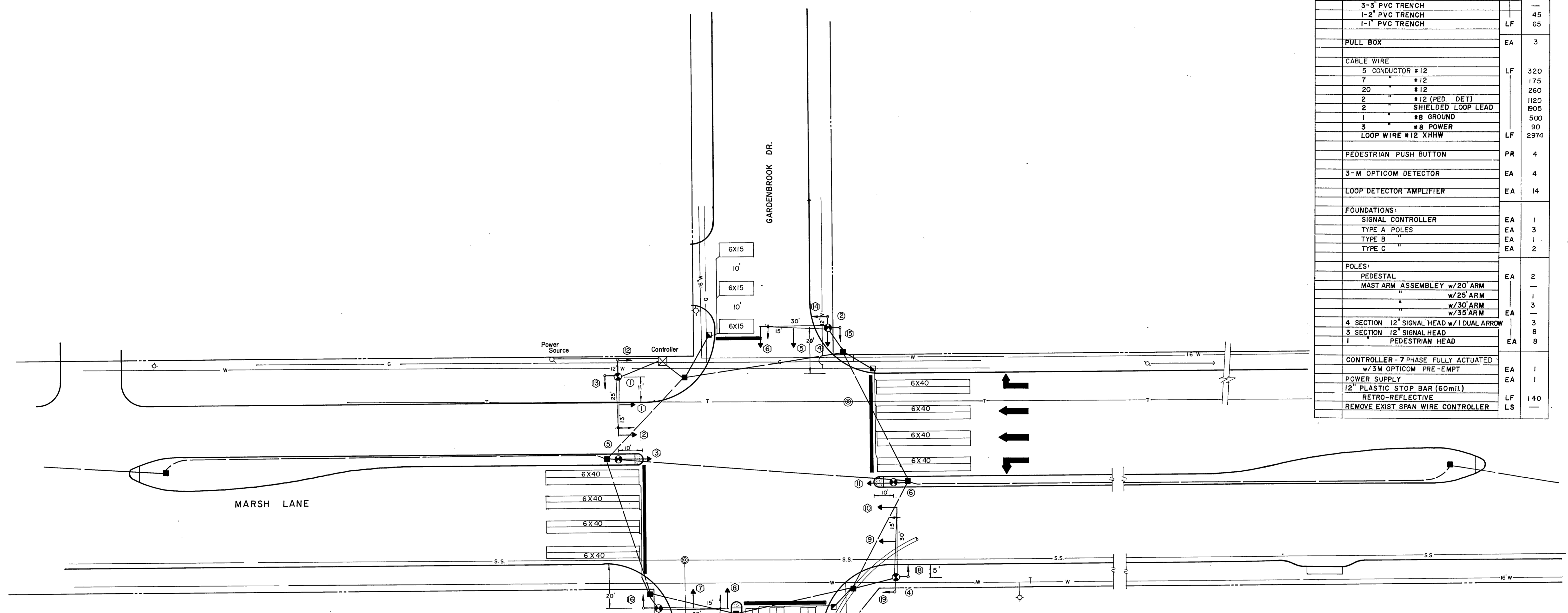


QUANTITIES

ITEM	DESCRIPTION	UNIT	QUANT.
<b>CONDUIT:</b>			
	1-3" PVC TRENCH	LF	100
	1-3" PVC PUSH		—
	2-3" PVC TRENCH		20
	3-3" PVC TRENCH		—
	1-2" PVC TRENCH	LF	45
	1-1" PVC TRENCH	LF	65
<b>PULL BOX</b>			
		EA	3
<b>CABLE WIRE</b>			
	5 CONDUCTOR #12	LF	320
	7 " #12		175
	20 " #12		260
	2 " #12 (PED. DET)		1120
	2 " SHIELDED LOOP LEAD		1905
	1 " #8 GROUND		500
	3 " #8 POWER		90
	LOOP WIRE #12 XHHW	LF	2974
<b>PEDESTRIAN PUSH BUTTON</b>			
		PR	4
<b>3-M OPTICOM DETECTOR</b>			
		EA	4
<b>LOOP DETECTOR AMPLIFIER</b>			
		EA	14
<b>FOUNDATIONS:</b>			
	SIGNAL CONTROLLER	EA	1
	TYPE A POLES	EA	3
	TYPE B "	EA	1
	TYPE C "	EA	2
<b>POLES:</b>			
	PEDESTAL	EA	2
	MAST ARM ASSEMBLY w/20' ARM		—
	" w/25' ARM		1
	" w/30' ARM		3
	" w/35' ARM	EA	—
	4 SECTION 12" SIGNAL HEAD w/1 DUAL ARROW		3
	3 SECTION 12" SIGNAL HEAD		8
	1 PEDESTRIAN HEAD	EA	8
<b>CONTROLLER - 7 PHASE FULLY ACTUATED</b>			
	w/3M OPTICOM PRE-EMPT	EA	1
<b>POWER SUPPLY</b>			
	12" PLASTIC STOP BAR (60mil.)	EA	1
	RETRO-REFLECTIVE	LF	140
	REMOVE EXIST SPAN WIRE CONTROLLER	LS	—



WIRING & PVC DIAGRAM

SIGNAL ARRAYS

HEAD NUMBERS	1,2 9,10	4,5 7,8	6,3 11	12,13 18,19	14,15 16,17
LENS SIZE	12"	12"	12"	*	*
TYPE	Conv.	Conv.	Conv.	Ped.	Ped.
LENS CONFIGURATION	R	R	R	DW	DW
	Y	Y	Y	WALK	WALK
	G	G	G		
				**	**
Total Number of Units	4	4	3	4	4

\* One Section Pedestrian Head (WINKO-MATIC Model VI-2L-AG or Equal)  
 \*\*Dual Arrow Fiber Optics - Amber/Green Arrow (WINKO-MATIC Model AFO-12 or Equal)

CONDUIT & CABLE QUANTITIES

FROM	TO	DISTANCE	PVC CONDUIT T-TRENCH P-PUSHED	CABLE										
				5C	7C	20C	2C PED	2C DET	1C #8	1C #12	3C #8			
		50'	1-1" T-65'										90	
		20'	1-3" T-30'	60			60							
	PB1	10'	2-3" T-15'	20	40	120	280	40						
	PB1	PB2	20'	1-2" T-20'				75				260		
	PB1	PB3	70'				75	150	300	75				
	PB3		10'	1-3" T-15'	15	15	30			30				
	PB3	PB4	15'	1-2" T-15'					80			964		
	PB3	PB5	60'				65				65			
	PB5		5'	1-3" T-10'	10						10			
	PB1	PB10	50'				55	55	220	385	55			
	PB10	PB9	60'					65	260	455	65	1040		
	PB9		5'	1-3" T-10'	20		10	30			20			
	PB9	PB8	35'				80		80	120	40			
	PB8	PB6	50'				110		110	165	55			
	PB6		20'	1-3" T-25'	50				60		25			
	PB6	PB7	10'	1-2" T-10'							45		710	
TOTALS							320	175	260	1120	1905	500	2974	90

- ① → ① INSTALL SIGNAL MAST ARM & POLE
- → → INSTALL TRAFFIC SIGNAL HEAD
- ○ ○ INSTALL PEDESTRIAN BUTTON
- → → INSTALL OPTICOM DETECTOR ONE-DIRECTION
- ■ ■ INSTALL SIGNAL PULL BOX
- ■ ■ EXISTING SIGNAL PULL BOX
- ⊠ ⊠ ⊠ INSTALL CONTROLLER & FOUNDATION
- ⊠ ⊠ ⊠ POWER POLE - SERVICE SOURCE
- ○ ○ INSTALL PEDESTRIAN SIGNAL POLE
- — — INSTALL PVC CONDUIT
- — — EXISTING PVC CONDUIT
- W-S-T-G- EXISTING U.G. UTILITIES - WATER - SAN SEW. - TEL. - GAS
- ||||| STORM SEWER

UNDER CONTRACT BY  
**H.B. JONES**  
 Consulting Engineers Garland, Texas

CITIES OF ADDISON & FARMERS BRANCH  
 DALLAS COUNTY, TEXAS

**TRAFFIC SIGNAL INSTALLATION**

INTERSECTION LAYOUT  
 MARSH LANE AND GARDENBROOK/BELTWAY

**GINN, INC.**  
 Consulting Engineers Dallas, Texas

DESIGN H.B.J. DRAWN R.G.B. SCALE 1"=20' PROJ.  
 APPROVED H.W.G. CHK'D H.B.J. DATE SEPT. 1983 SHEET 6 of 14