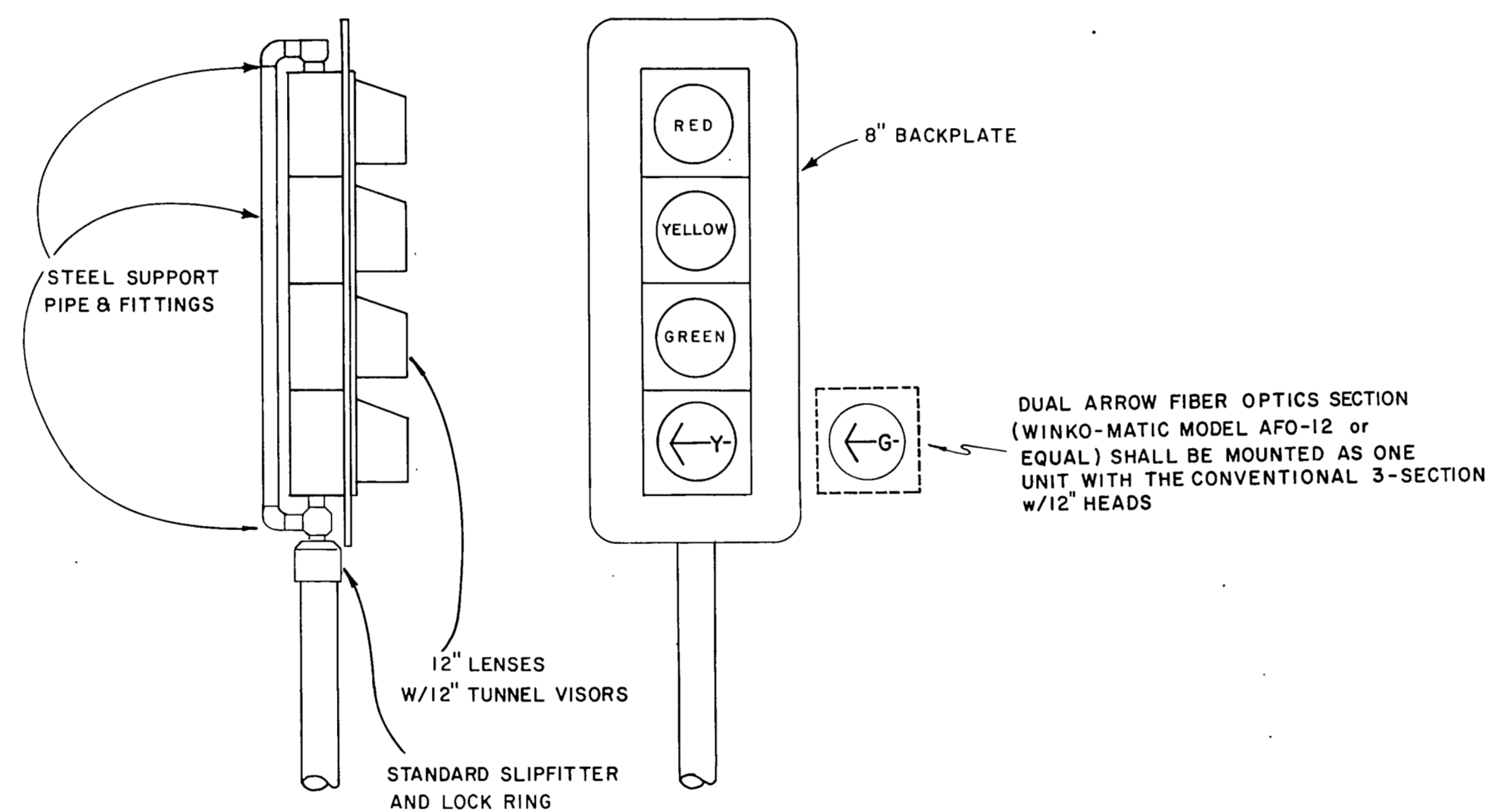


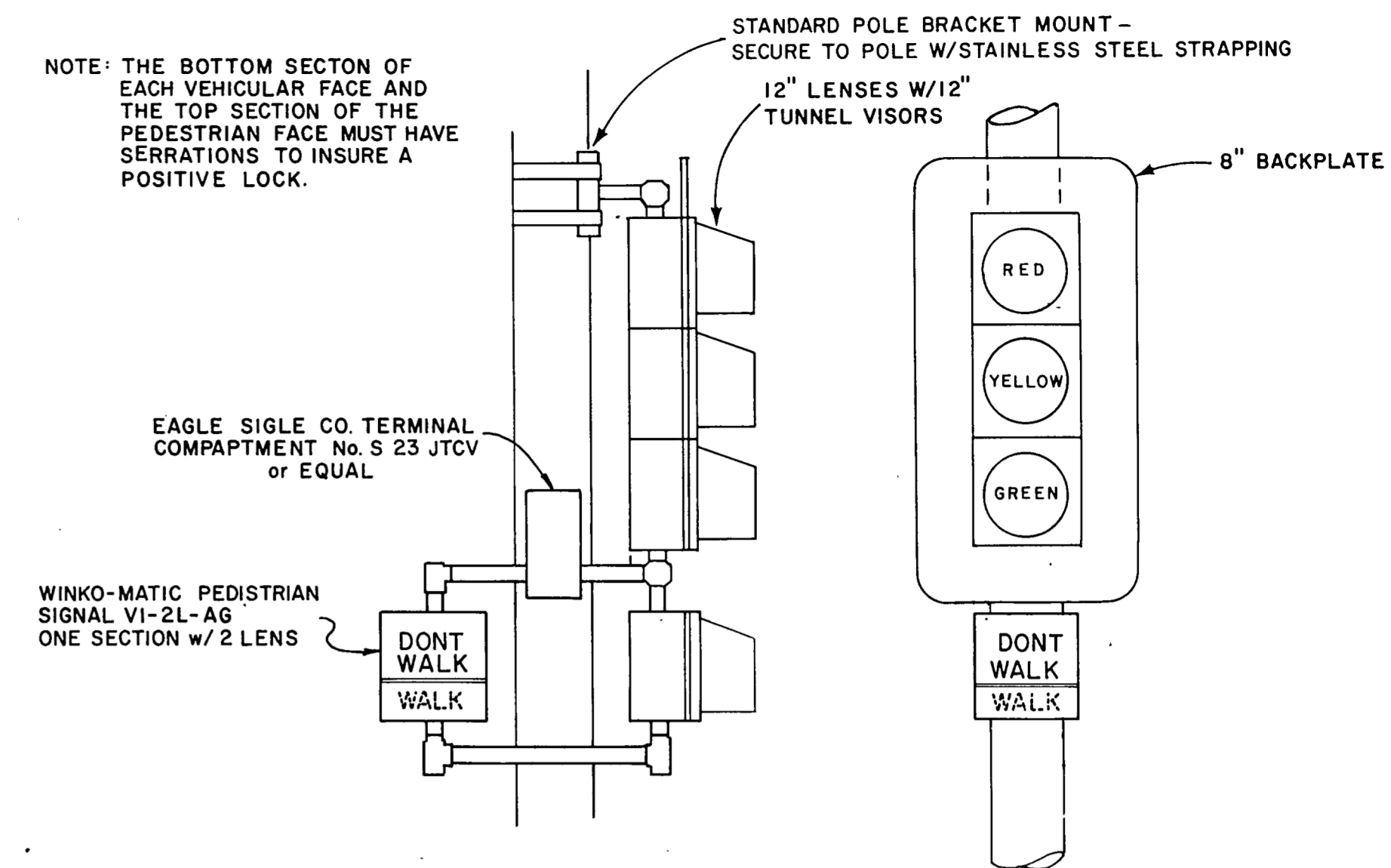
TYPICAL MAST-ARM MOUNTINGS



TYPICAL SIGNAL PEDESTAL TOP MOUNT - 4 - LENS HEAD

GENERAL NOTES FOR SIGNAL HEADS

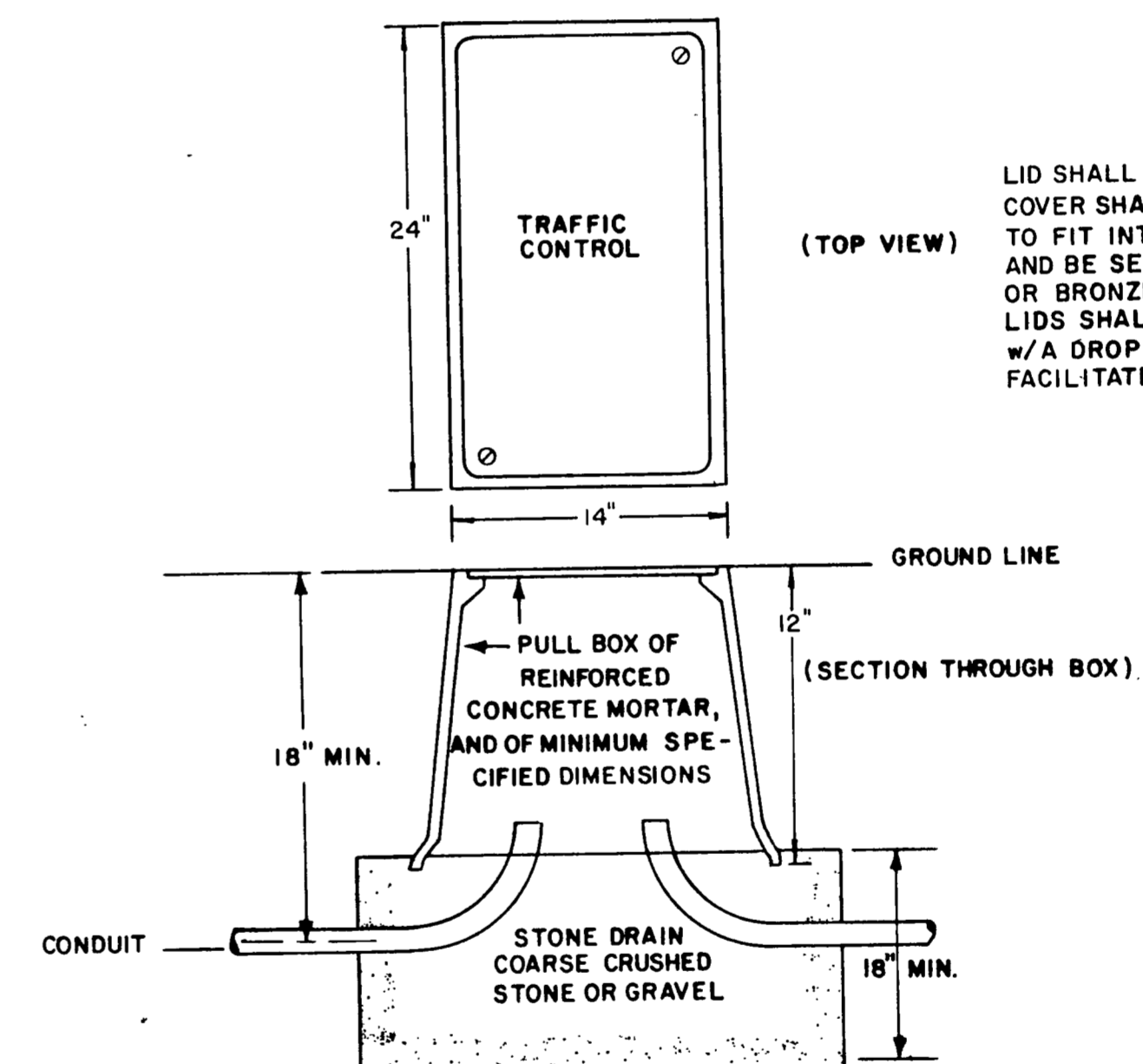
- PEDESTAL TOP-MOUNTED SIGNAL HEADS TO BE FURNISHED AS COMPLETE UNITS INCLUDING SLIP-FITTER, LOCK RING ATTACHMENT AND OTHER NECESSARY MOUNTING HARDWARE, PER DETAILS.
- POLE MOUNTED SIGNAL HEADS TO BE FURNISHED AS COMPLETE UNITS INCLUDING FITTINGS, POLE-MOUNT BRACKETS, STAINLESS STEEL STRAPPING AND OTHER NECESSARY MOUNTING HARDWARE, PER DETAIL.
- BOTTOM SECTION OF SIGNAL HEADS MUST HAVE CORRUGATIONS TO INSURE POSITIVE RADIAL POSITION LOCKING.
- POST AND PEDESTAL TOP MOUNTED HEADS ARE TO HAVE A MINIMUM CLEARANCE TO GROUND LINE OF 7 FEET.
- ALL MAST-ARM MOUNTED HEADS ARE TO HAVE A MINIMUM CLEARANCE TO HIGHEST POINT OF ROADWAY OF 17 FEET.
- ALL SIGNAL HEADS TO BE EQUIPPED WITH 8" BACKPLATES, PER DETAILS.
- THE INSTALLATION OF SIGNAL HEADS WILL ALSO INCLUDE PROVISION OF ADEQUATE NUMBER OF WIRES FROM THE HEADS TO THE TRANSFORMER BASE. TY#14 T.W. SOLID SHALL BE USED.



TYPICAL POLE MOUNT

3 or 4 SECTION HEAD w/PEDESTRIAN HEAD

NOTE: Pole mounted heads shall be positioned on the poles to give greatest amount of visibility



PULL BOX INSTALLATION

LID SHALL BE CAST IRON. COVER SHALL BE FABRICATED TO FIT INTO A RECESSED LIP AND BE SECURED w/ 2 BRASS OR BRONZE BOLTS & NUTS. LIDS SHALL BE PROVIDED w/A DROP TYPE HANDLE TO FACILITATE REMOVAL.

NOT TO SCALE

UNDER CONTRACT BY
H. B. JONES
 Consulting Engineers Garland, Texas

TRAFFIC SIGNAL INSTALLATION				
DETAIL SHEET C				
GINN, INC.				
Consulting Engineers Dallas, Texas				
DESIGNED HBJ	DRAWN RGB	DATE JULY 1983	PROJ. NO.	
APPROV'D HBJ	CHK'D HBJ	SCALE NONE	SHEET 13 OF 14	