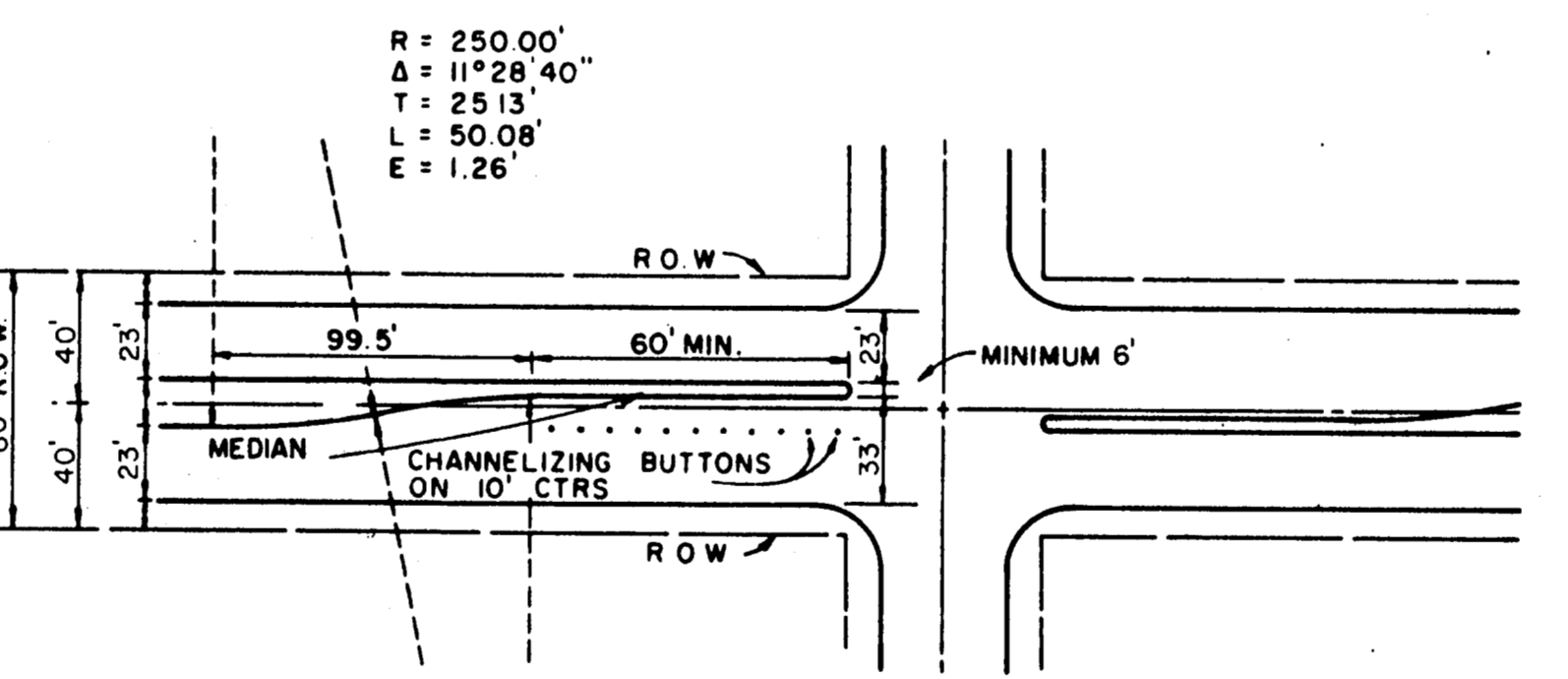
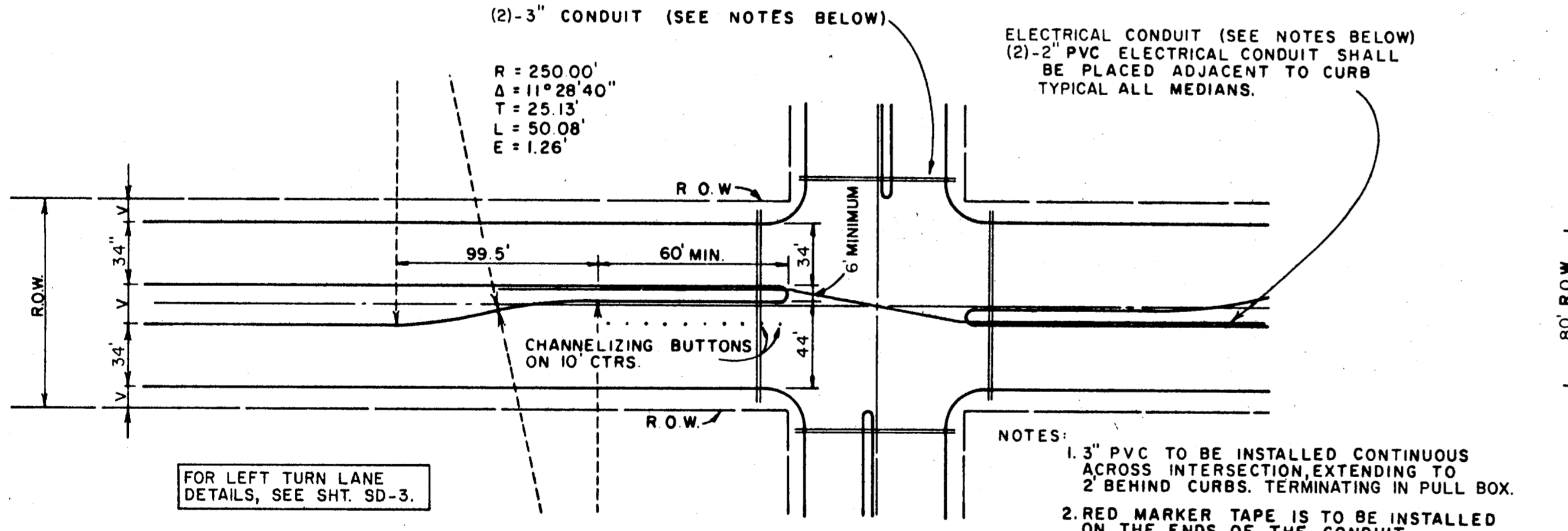
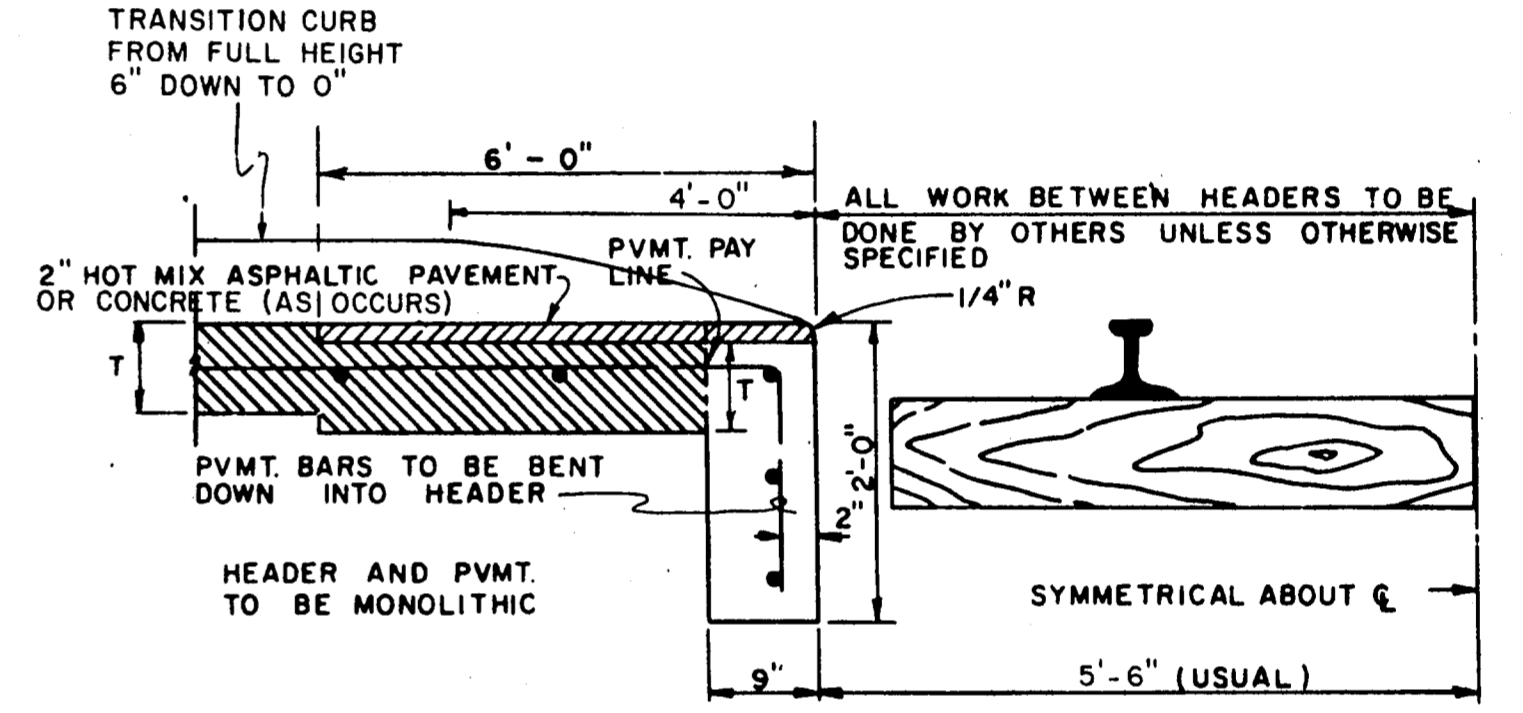
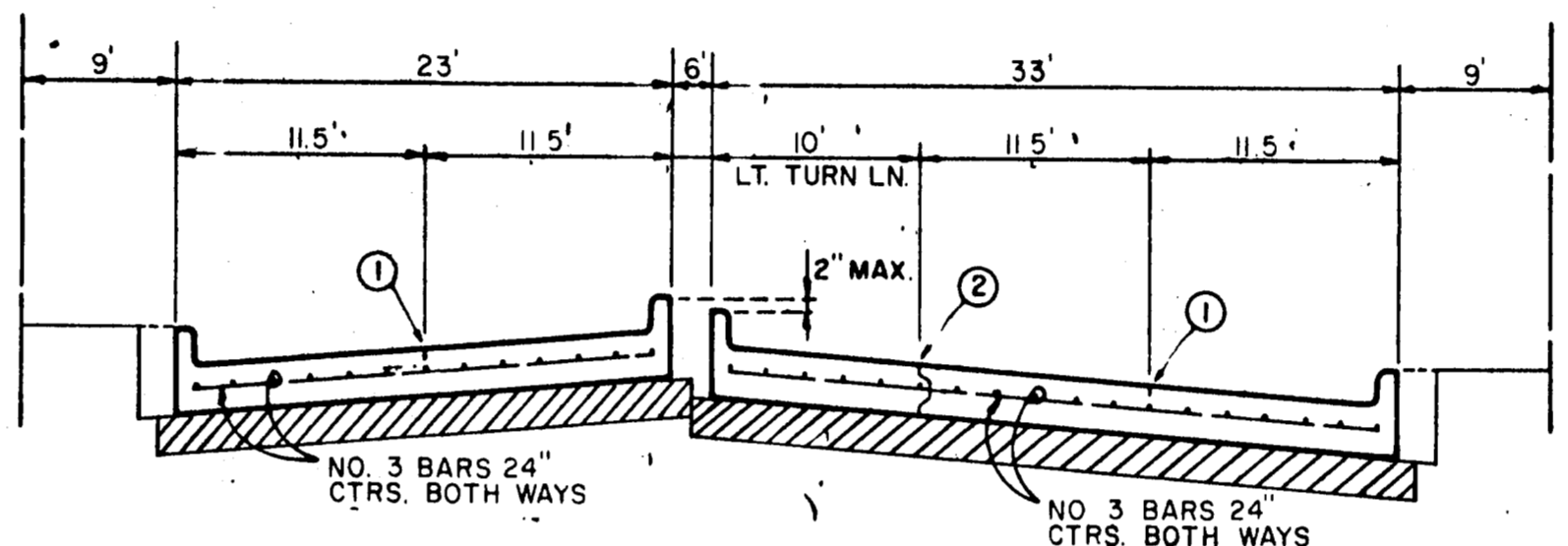
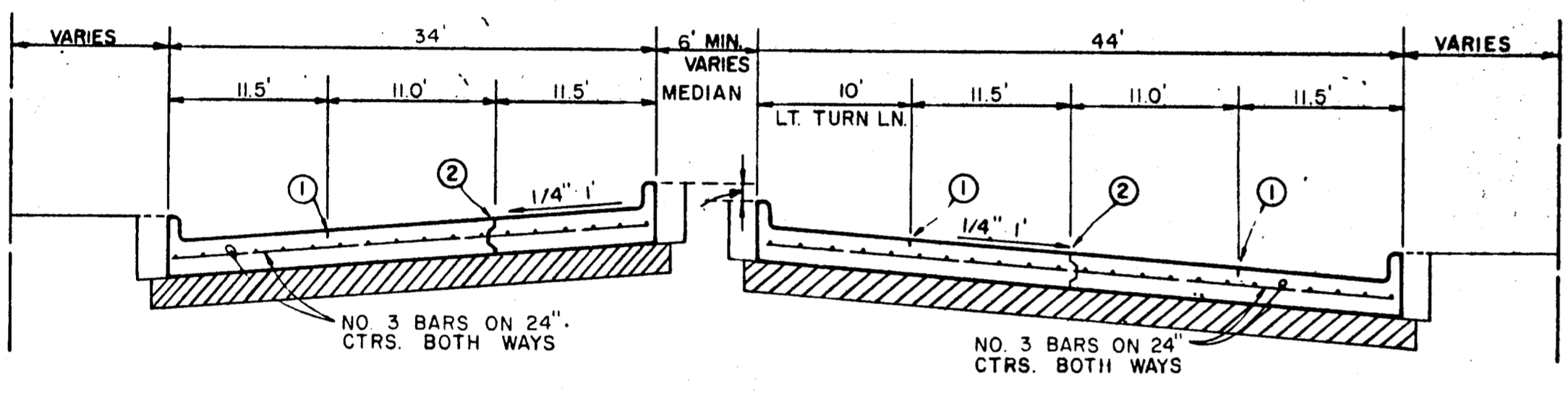
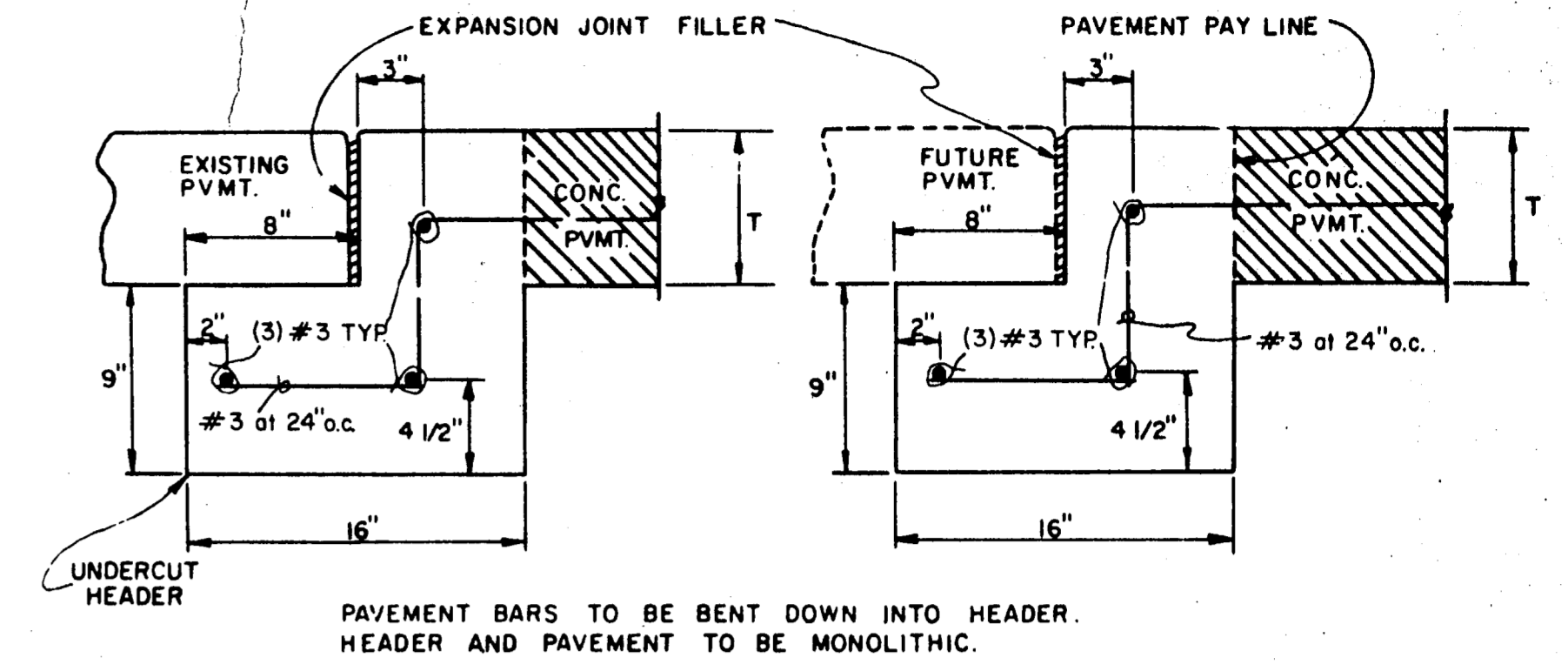
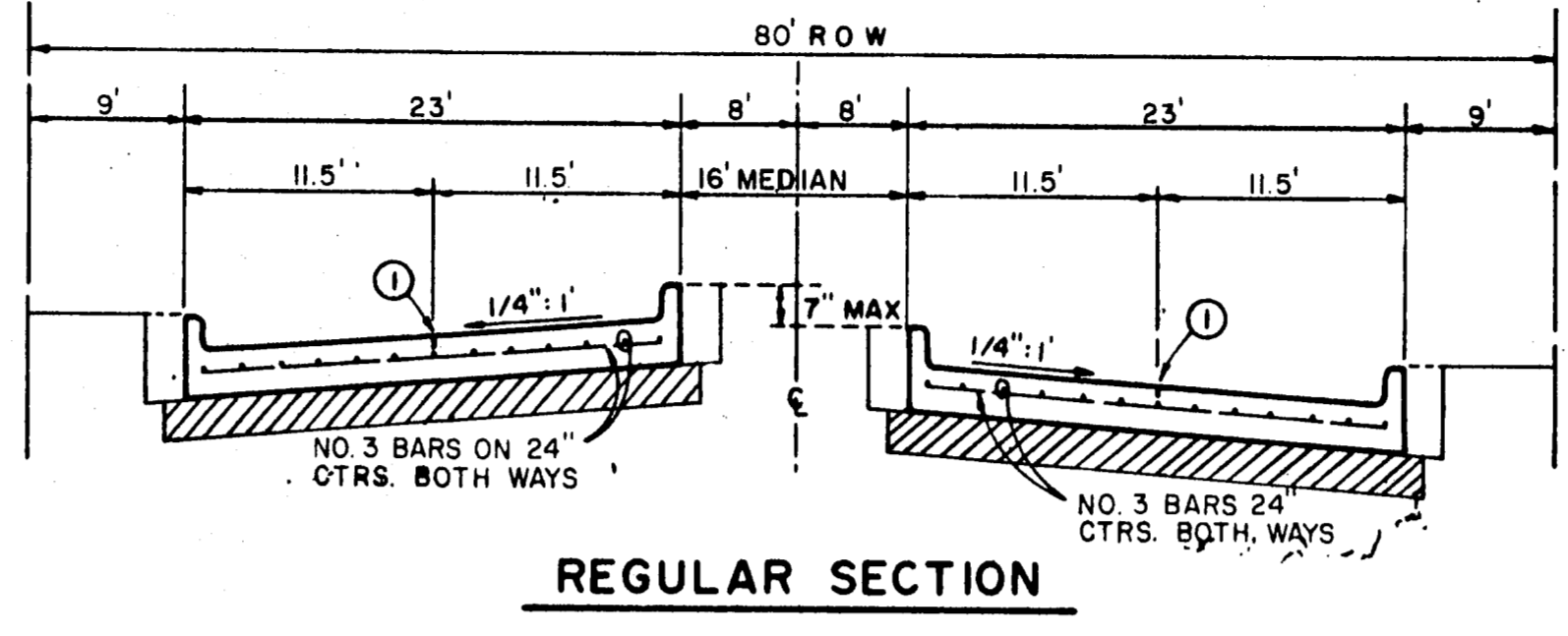
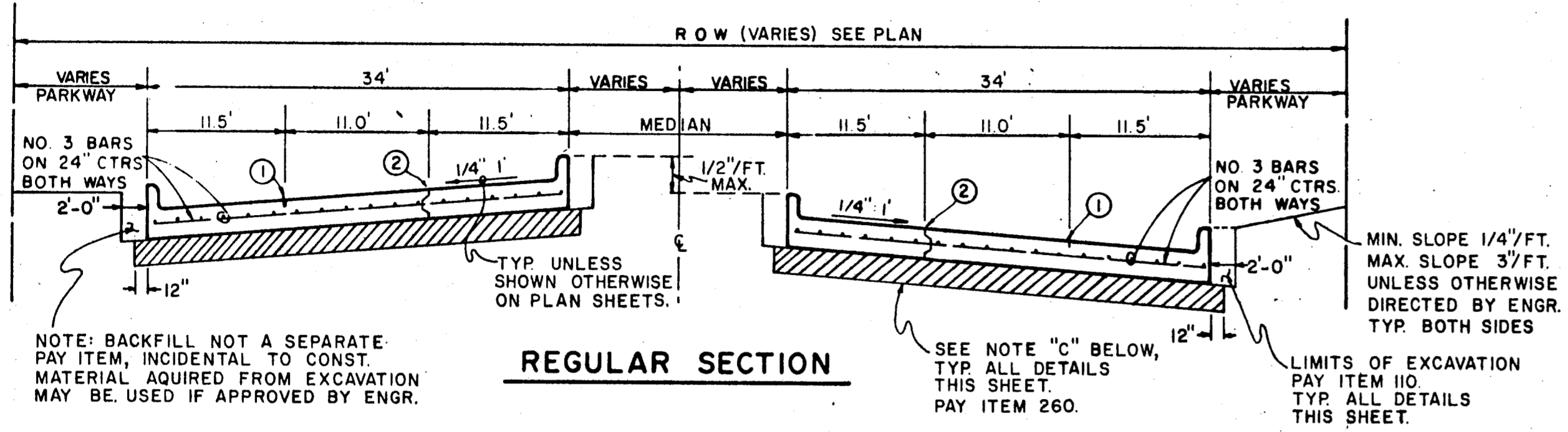


NOTE: ALL TYPICAL NOTES SHOWN THIS DETAIL SHALL APPLY TO ALL DETAILS THIS SHEET UNLESS OTHERWISE INDICATED.



- NOTES:
1. 3" PVC TO BE INSTALLED CONTINUOUS ACROSS INTERSECTION, EXTENDING TO 2' BEHIND CURBS, TERMINATING IN PULL BOX.
  2. RED MARKER TAPE IS TO BE INSTALLED ON THE ENDS OF THE CONDUIT.
  3. THE EXACT LOCATIONS WHERE THE CONDUIT CROSSES UNDER THE PAVING ARE TO BE CHISELED WITH AN 'X' AND PAINTED WITH RED PAINT, ON THE CURB OR PAVING.
  4. A NYLON CORD SHALL BE PLACED IN ALL CONDUIT UNDER PAVEMENT. THIS CORD SHALL EXTEND A MINIMUM OF 1' FROM THE END OF THE CONDUIT.

- LEGEND
- ① - SAWED LONGITUDINAL DUMMY JOINT
  - ② - CONSTRUCTION JOINT (FULL WIDTH PVMT. IS ALLOWED WHERE APPROVED BY THE TOWN OF ADDISON).

**RAIL HEADER**  
**GENERAL NOTES**

- A. GENERAL. PAVEMENT THICKNESS FOR STRAIGHT CROWN STREETS SHALL BE AS SPECIFIED BELOW IN SPECIAL NOTES.
- B. STANDARD SPECIFICATIONS. REINFORCED CONCRETE PAVEMENTS.
1. ALL CURBS SHALL BE PLACED INTEGRAL WITH PAVEMENT.
  2. CURBS SHALL MEET THE SAME COMPRESSIVE STRENGTH AS SPECIFIED FOR THE CONCRETE PAVEMENT.
  3. DETAIL AND ARRANGEMENT OF JOINTS, ALL TYPES, SHALL BE AS SHOWN ON SHEET SD-3 OF THE STANDARD CONSTRUCTION DETAILS, OR AS APP'D. BY ENGR.
  4. BAR LAPS SHALL BE 30 DIAMETERS.
- C. SUBGRADE. SUBGRADE UNDER ALL PAVEMENT SHALL BE 6 INCHES THICK AND SHALL BE STABILIZED WITH 6 PERCENT BY WEIGHT OF HYDRATED LIME (27 LBS/SY.) AND COMPACTED TO A DENSITY NOT LESS THAN 95 PERCENT AS DETERMINED A.A.S.H.O. T-99. LABORATORY TESTS MAY BE SUBMITTED TO THE ENGINEERING DEPARTMENT FOR APPROVAL TO LOWER AMOUNT OF LIME REQUIRED.
- D. BAR CHAIRS OR AN APPROVED SUPPORTING DEVICE SHALL BE FURNISHED.
- E. CROSS SLOPE SHALL BE 1/4" PER FOOT UNLESS APPROVED BY ENGINEER

**SPECIAL NOTES**

PAVEMENT THICKNESS AND STRENGTHS SHALL BE AS FOLLOWS 6"-3000 P.S.I. COMP, SEE SPECIFICATIONS.

NO.	REVISION	BY	DATE
TOWN OF ADDISON, TEXAS DEPARTMENT OF ENGINEERING			
STANDARD CONSTRUCTION DETAILS PAVING			
STRAIGHT CROWN STREETS			
APPROVED		H. WAYNE GINN, P.E.	
DATE MARCH, 1984	SHEET		SD-1