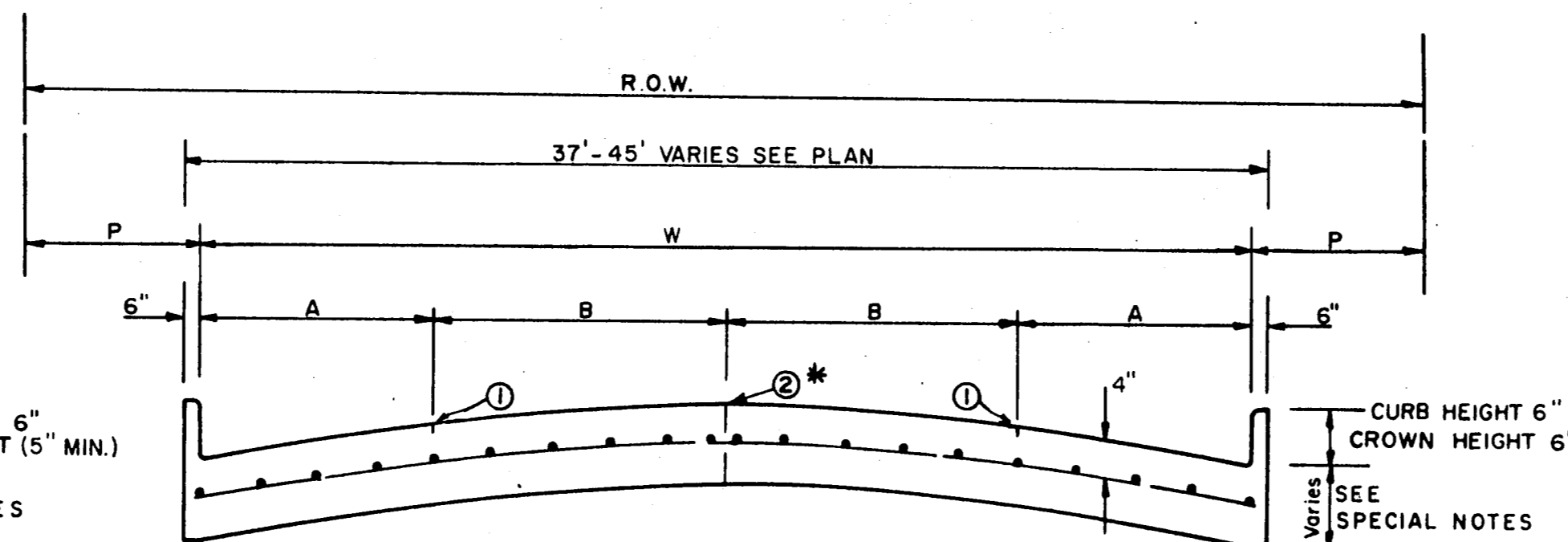


**ONE MOVING LANE / TWO PARKING LANES**  
(LOCAL STREET)



STREET TYPE	STREET WIDTH (W)	A	B	R.O.W. WIDTH	P
COLLECTOR /	36' #	8'	10'	60'	11.5'
COLLECTOR /	40'	8' OR 10'	10' OR 12'	60'	9.5'
COLLECTOR /	44'	11'	11'	65'	10.0'

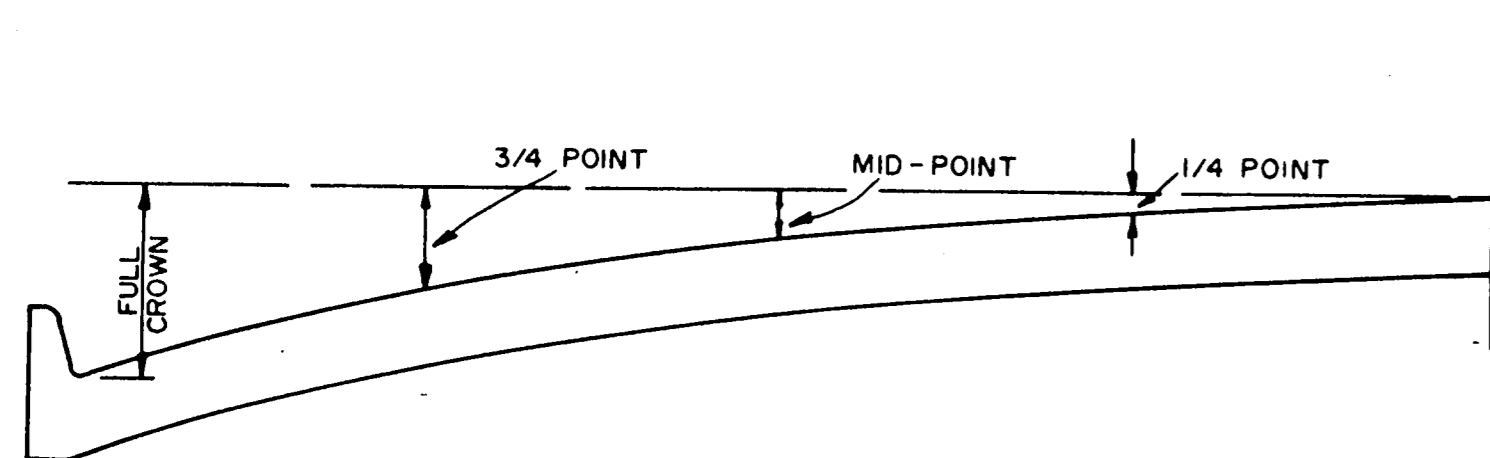
\* FULL WIDTH PAVEMENT OF 36' WIDTH STREETS IS ALLOWED WHERE APPROVED BY THE CITY OF COPPELL.

**FOUR MOVING LANES OR TWO MOVING LANES / TWO PARKING LANES**

**REINFORCED CONCRETE PAVEMENT**

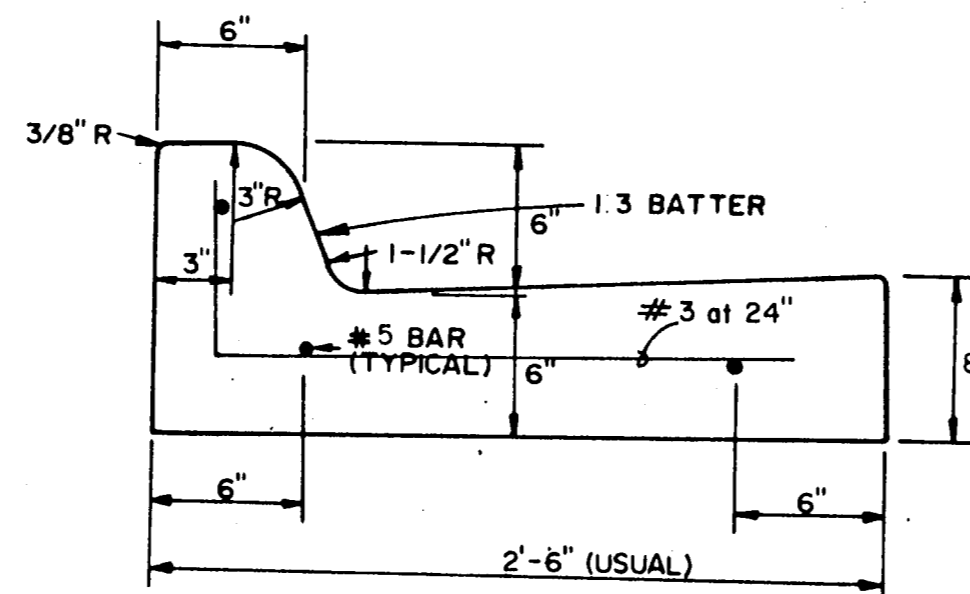
ALL REINFORCING BARS SHALL BE NO. 3 TRANSVERSE BARS TO BE SPACED ON 2'-0" CENTERS; LONGITUDINAL BARS TO BE SPACED ON 2'-0" EXCEPT WHERE NOTED.

- ① SAWED LONGITUDINAL DUMMY JOINT
- ② CONSTRUCTION JOINT (FULL WIDTH PVMT. IS ALLOWED WHERE APPROVED BY ENGINEER)

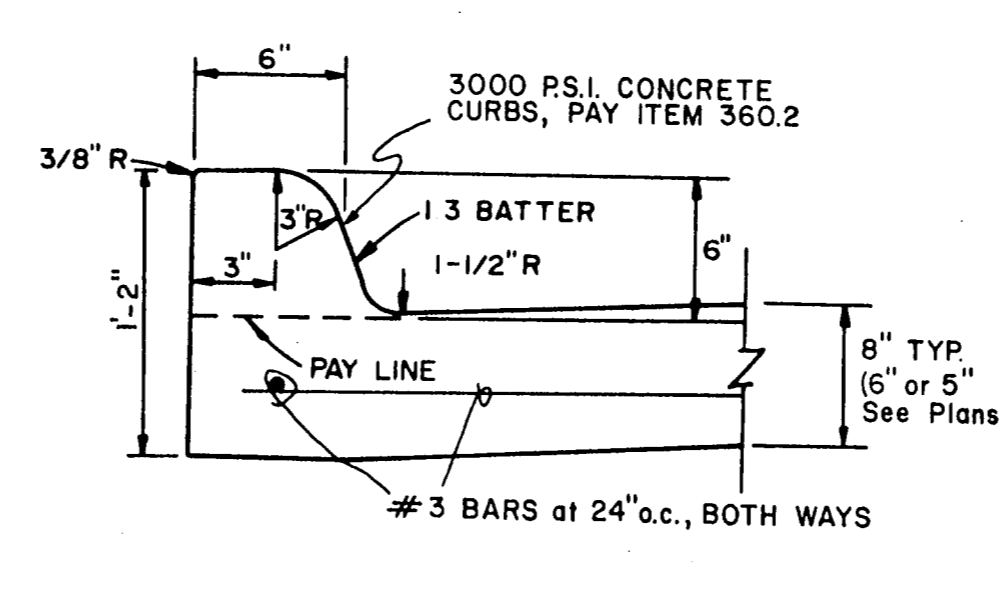


ROADWAY WIDTH (W)	TOTAL CROWN HEIGHT	3/4 POINT	MID-POINT	1/4 POINT
26'	6"	3 - 3/8"	1 - 1/2"	3/8"
36'	6"	3 - 3/8"	1 - 1/2"	3/8"
44'	6"	3 - 3/8"	1 - 1/2"	3/8"
48'	6"	3 - 3/8"	1 - 1/2"	3/8"

**TABLE OF CROWN HEIGHTS AND ORDINATES FOR VARIOUS PARABOLIC SECTIONS**



**SEPARATE CURB-AND-GUTTER**  
PAY ITEM 530.1



**INTEGRAL CURB**

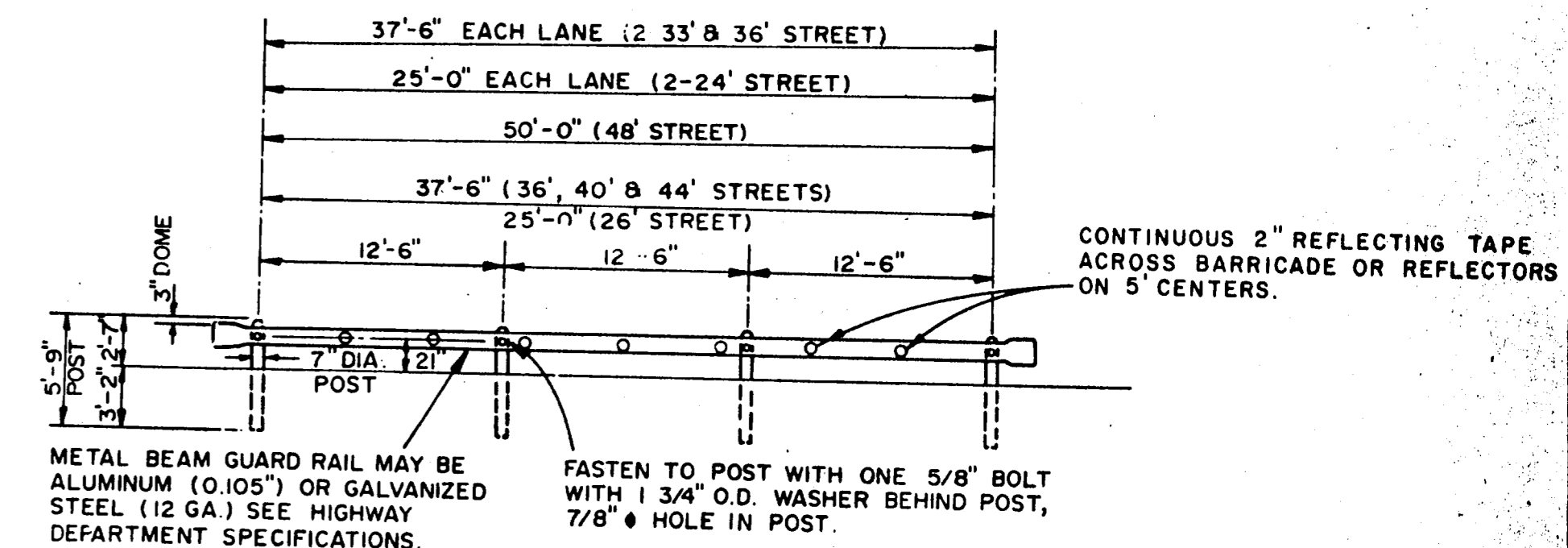
**CURB AND CURB-AND-GUTTER**

**GENERAL NOTES**

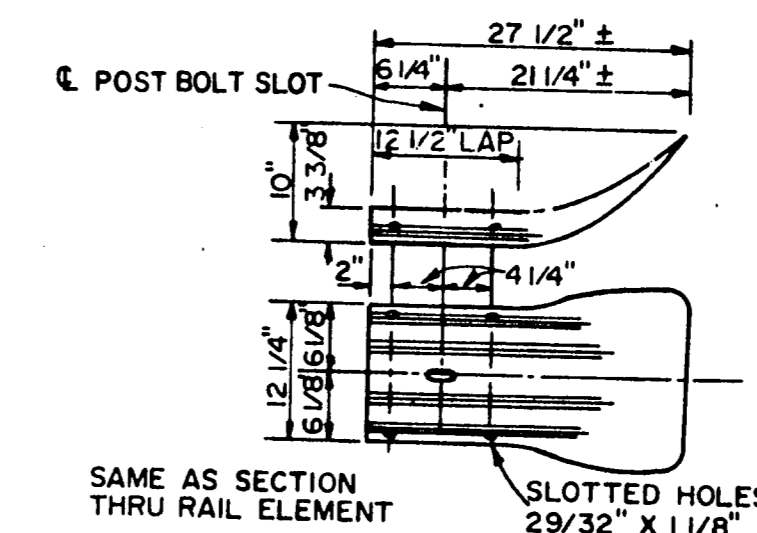
- A. GENERAL  
USUAL PAVEMENT THICKNESS IS AS SHOWN IN SPECIAL NOTES. SUBGRADE DESIGN SHALL CONFORM TO THE TOWN OF ADDISON, DEPARTMENT OF ENGINEERING REQUIREMENTS, AND SHALL EXTEND 12" (MIN.) BEHIND CURB, SEE SD-1.
- B. REINFORCED CONCRETE PAVEMENT
  - 1. CONCRETE STRENGTH SHALL BE AS SHOWN IN SPECIAL NOTES.
  - 2. ALL CURBS SHALL BE INTEGRAL WITH PAVEMENT.
  - 3. DETAIL AND ARRANGEMENT OF PAVEMENT JOINTS, ALL TYPES, SHALL BE AS SHOWN ON SHEET SD-3
  - 4. BAR LAPS SHALL BE THIRTY DIAMETERS.
- C. SUBGRADE  
SUBGRADE UNDER ALL PAVEMENT SHALL BE 6 INCHES THICK AND SHALL BE STABILIZED WITH 6 PERCENT BY WEIGHT OF HYDRATED LIME (27 LBS/SY.) AND COMPACTED TO A DENSITY NOT LESS THAN 95 PERCENT AS DETERMINED BY A.A.S.H.O. T-99. LABORATORY TESTS MAY BE SUBMITTED TO THE ENGINEERING DEPARTMENT FOR APPROVAL TO LOWER AMOUNT OF LIME REQUIRED.
- D. BAR CHAIRS OR AN APPROVED DEVICE SHALL BE FURNISHED.

**SPECIAL NOTES**

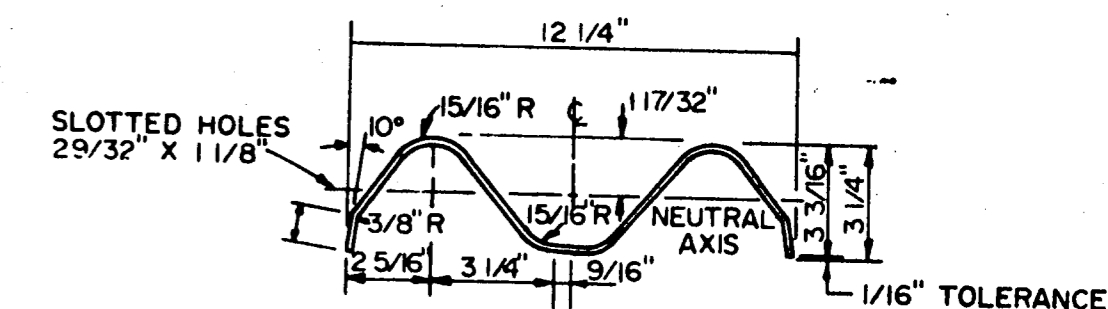
PAVEMENT THICKNESS AND STRENGTHS SHALL BE AS FOLLOWS;  
 TYPE (RETAIL THRU INDUSTRIAL)  
 8" - 3000 P.S.I.  
 TYPE (RESIDENTIAL)  
 6" 3000 P.S.I. COMP. OR 5" - 3600 P.S.I. COMP.



**FRONT ELEVATION**



**TERMINAL SECTION**



NOTE: ACTUAL SECTION MAY BE SLIGHTLY DIFFERENT DEPENDING UPON THE MFR.

**SECTION THRU RAIL ELEMENT**

**BARRICADE DETAIL**

NO.	REVISION	BY	DATE
TOWN OF ADDISON, TEXAS DEPARTMENT OF ENGINEERING			
STANDARD CONSTRUCTION DETAILS PAVING			
PARABOLIC CROWN STREETS			
APPROVED		H. WAYNE GINN, P.E.	
DATE MARCH, 1984		SHEET	SD-2