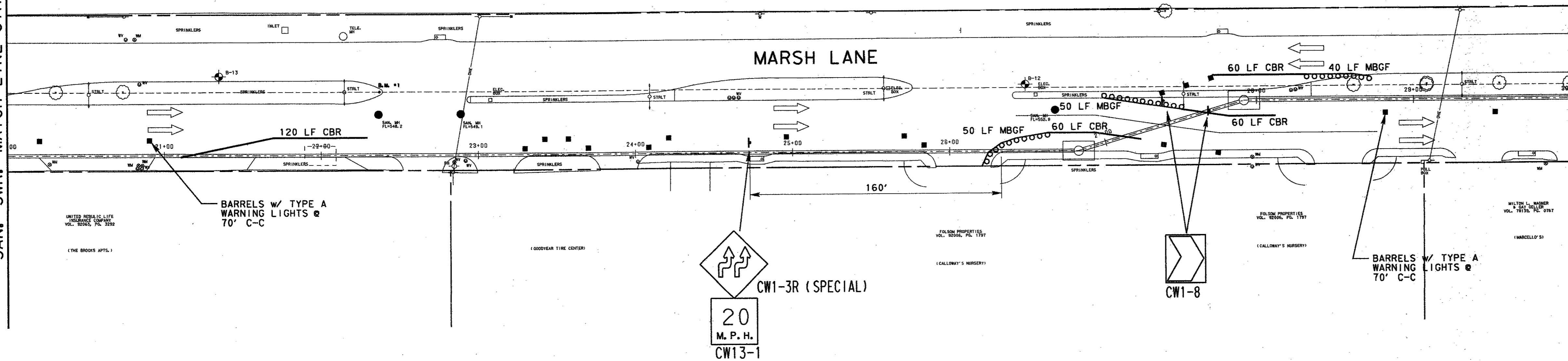


SAN. SWR. MATCH LINE STA. 20+00

SAN. SWR. MATCH LINE STA. 30+00



LEGEND

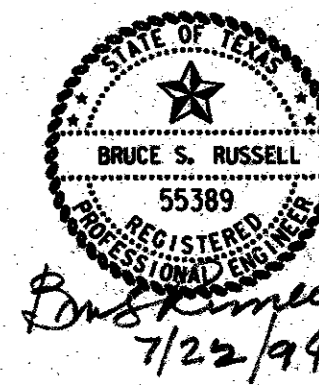
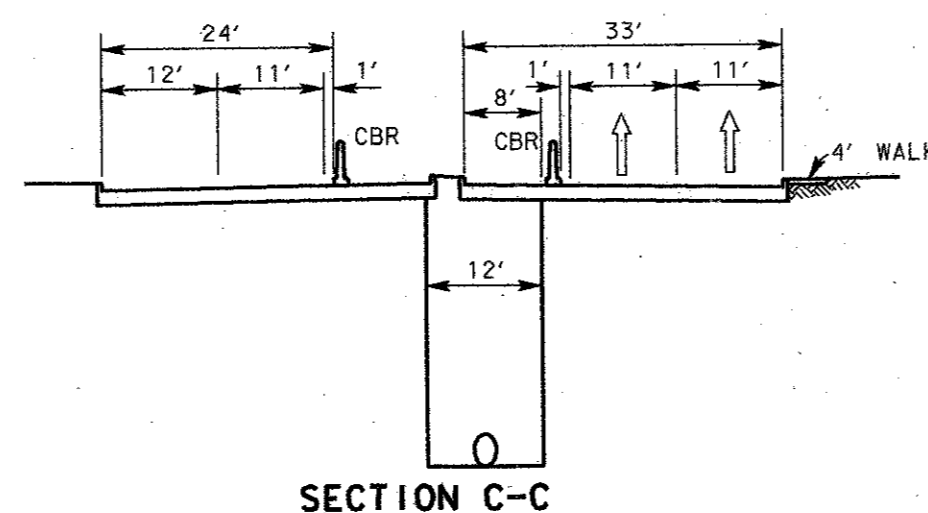
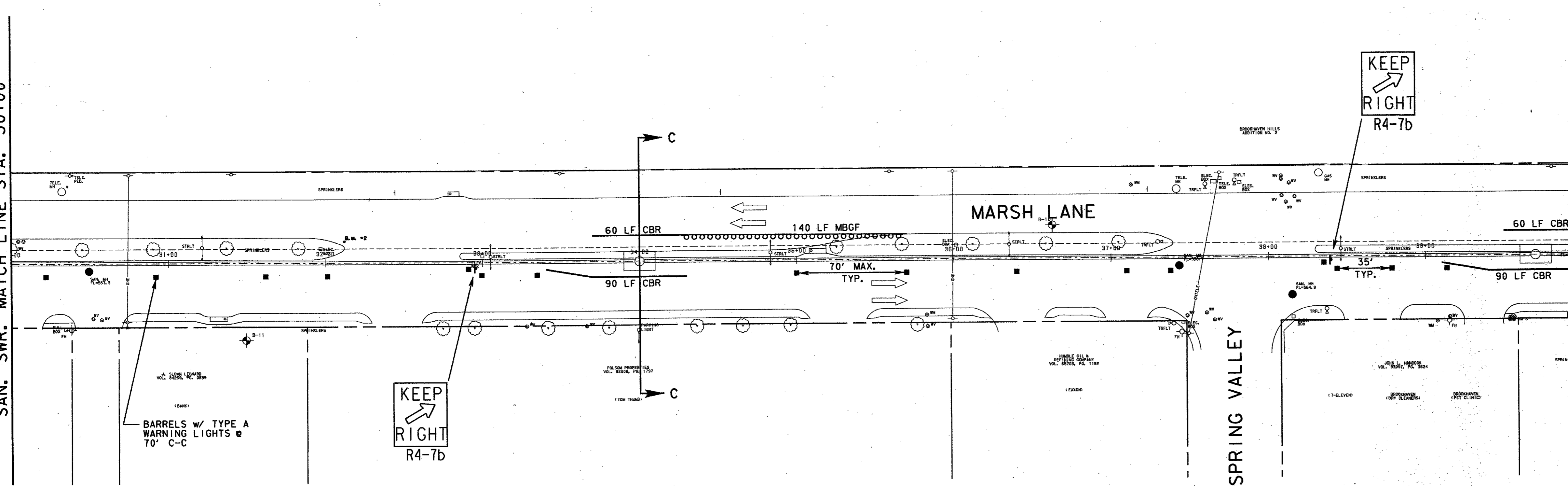
- CONCRETE BARRIER RAIL (CBR) W/ REFLECTIVE MARKERS
- METAL BEAM GUARD FENCE (MBGF)
- 4" SOLID WHITE LANE STRIPE
- BARRELS W/TYPE A WARNING LIGHTS
- SIGNS
- TRAFFIC FLOW

GENERAL NOTES

1. ALL SIGNS, BARRICADES AND OTHER TRAFFIC CONTROL DEVICES SHALL BE INSTALLED AND MAINTAINED IN ACCORDANCE WITH THE TEXAS UNIFORM MANUAL ON TRAFFIC CONTROL DEVICES, LATEST EDITION, AND IN ACCORDANCE WITH STANDARD DETAILS BC(1)-89 THRU BC(7)-89.
2. PAVEMENT MARKINGS AS SHOWN IN THESE PLANS ARE INTENDED FOR TEMPORARY TRAFFIC CONTROL DURING CONSTRUCTION. CONTRACTOR SHALL PLACE AND MAINTAIN MARKINGS CLEAR OF DUST AND DIRT THROUGHOUT CONSTRUCTION. THE CONTRACTOR SHALL AS DIRECTED BY ENGINEER, REMOVE TEMPORARY PAVEMENT MARKINGS AND RESTORE THE ORIGINAL MARKINGS TO A LIKE CONDITIONS IN ACCORDANCE WITH TOWN STANDARDS.
3. WHEN THE CONTRACTOR HAS COMPLETED CONSTRUCTION OF THE PROPOSED INTERCEPTOR LINE AND THE LINE IS PLACED IN SERVICE THE CONTRACTOR SHALL PROVIDE THE CITY TRAFFIC CONTROL PLANS FOR WORK RELATED TO ABANDONING EXISTING SEWER MANHOLES ALONG THE PROJECT AS CALLED FOR IN THE PLANS.
4. LOCATIONS OF SIGNS, BARRICADES AND TRAFFIC CONTROL DEVICES SHOWN ARE APPROXIMATE AND MAY BE ADJUSTED TO FIT FIELD CONDITIONS AS DIRECTED BY ENGINEER.
5. TEMPORARY REGULATORY, WARNING AND DIRECTIONAL SIGNS WILL BE FURNISHED BY THE CONTRACTOR. SUCH SIGNS SHALL BE ERECTED BY THE CONTRACTOR ON TEMPORARY SIGN SUPPORTS. NO EXISTING SIGNS OR POSTS WILL BE REMOVED OR DISTURBED UNLESS APPROVED BY THE CITY.

SAN. SWR. MATCH LINE STA. 30+00

SAN. SWR. MATCH LINE STA. 40+00



4			
3			
2			
1			
NO.	DATE	REVISION	APPROV.

TOWN OF ADDISON, TEXAS
 MARSH LANE SEWER INTERCEPTOR
 TRAFFIC CONTROL PLAN
 FROM SAN. SWR. STATION 20+00 TO STATION 40+00



Consultants in Engineering, Architecture,
 Planning and the Environment
CARTER & BURGESS, INC.
 7950 ELMBROOK DRIVE, SUITE 250
 DALLAS, TX 75247-4961

Unit	Scale	1" = 40'	Date	07-22-94
Designed	H. Humphreys	Checked	B. Russell	Job No. 933154010
Drawn	B. Sowels	Approved	B. Russell	Sheet 24 of 32