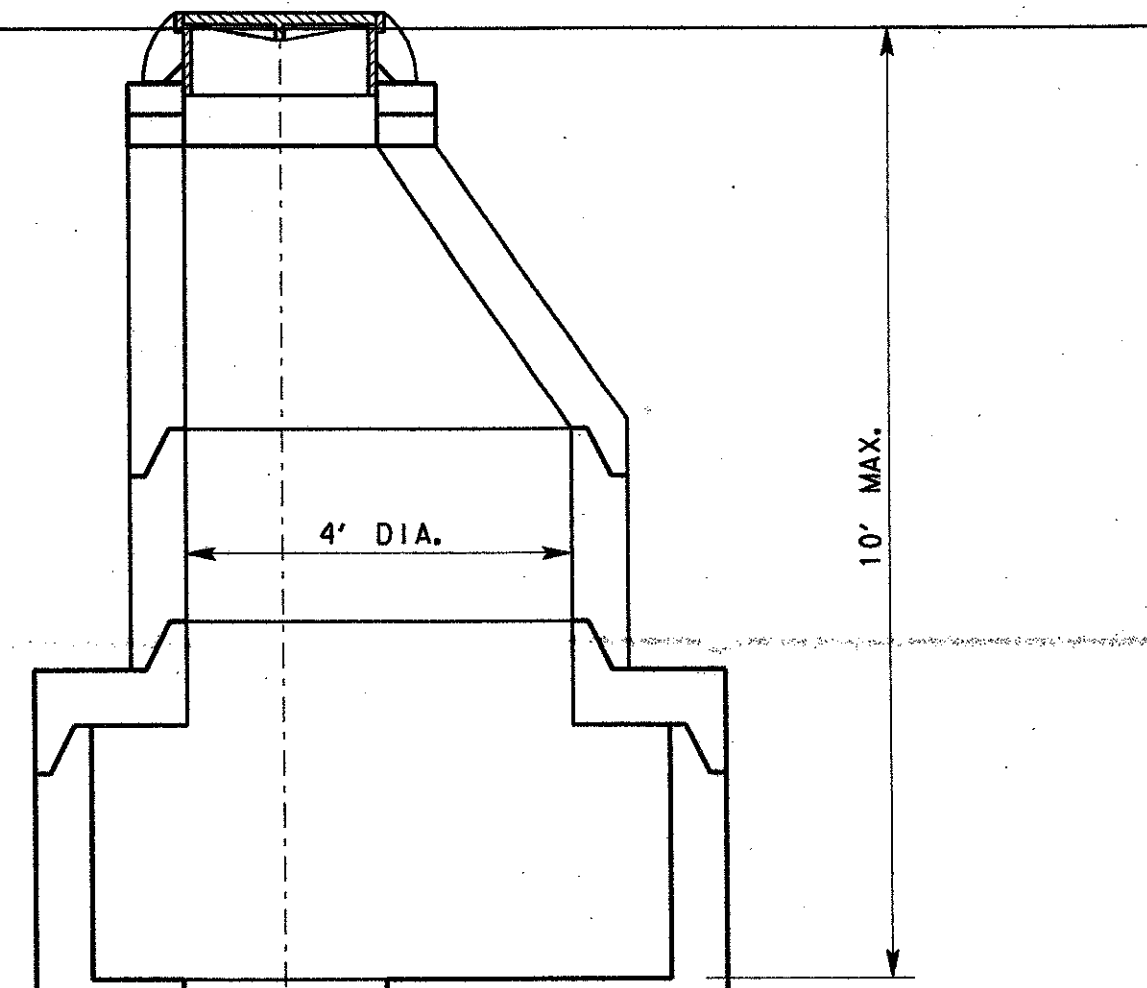


STD. PRECAST 22" HEAVY DUTY CAST IRON FRAME AND COVER, ASTM 478 FOR H-20 LOADING. (NEENAH R1687 OR APPROVED EQUAL)

PRECAST CONCRETE ADJUSTING RINGS (6" MIN., 12" MAX.)



10' MAX.

4" DIA.

STANDARD INTERMEDIATE MANHOLE PRECAST LANDING SEE DETAIL THIS SHEET.

PRECAST CONCRETE MANHOLE SECTIONS, ASTM C-478 WITH NEOPRENE O-RING GASKET ASTM C-443

6" DIA.

FIELD APPLIED WATER PROOF EXTERIOR CONCRETE, SEE SPECIFICATIONS SECTION 02601

BACKFILL MANHOLE EXCAVATION WITH CEMENT STABILIZED SAND PER SPECIFICATIONS SECTION 02601-2H

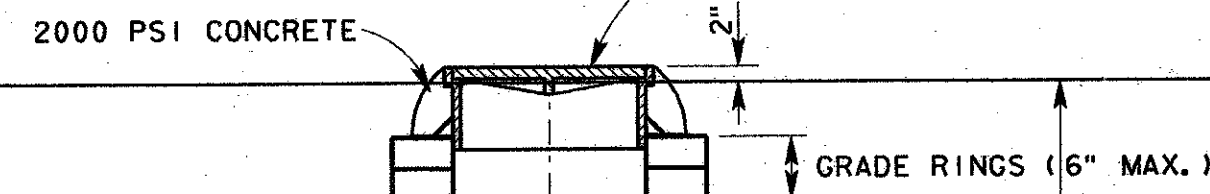
PERFORMED WATER STOP SYNKO-FLEX FED SPEC SS-S-210A OR APPROVED EQUAL

2000 PSI LEAN CONCRETE

4000 PSI CLASS "C" CONCRETE CAST IN PLACE FOUNDATION

6' DIA. MANHOLE

STD. PRECAST 22" HEAVY DUTY CAST IRON FRAME AND COVER, ASTM 478 FOR H-20 LOADING. (NEENAH R1687 OR APPROVED EQUAL)



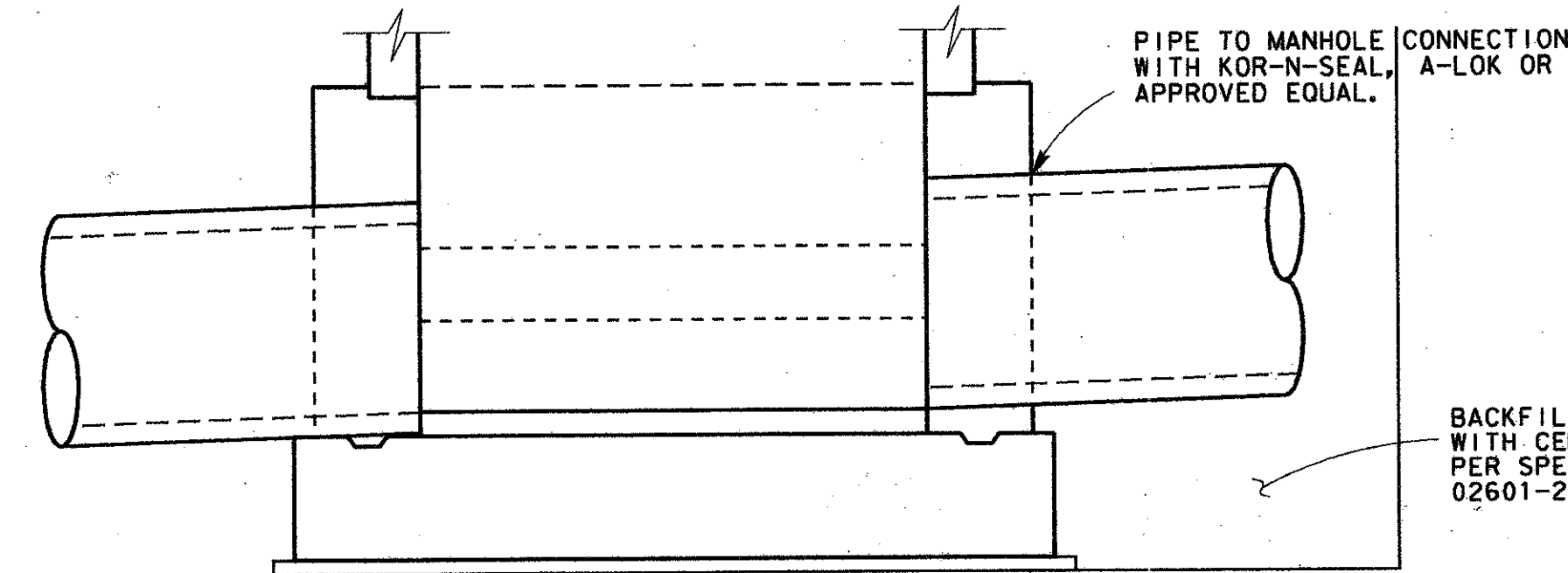
10' MAX.

4" DIA.

6" DIA.

CONCENTRIC MANHOLE

STANDARD INTERMEDIATE MANHOLE PRECAST LANDING SEE DETAIL THIS SHEET.



SECTION

PIPE TO MANHOLE CONNECTION WITH KOR-N-SEAL, A-LOK OR APPROVED EQUAL.

PVC PIPE FLOW

2000 PSI NON-SHRINK GROUT

CROSS

PVC PIPE TO MATCH DIA. OF INCOMING LINE

3/8" DIAMETER ALUMINUM OR STAINLESS STEEL PIPE STRAPS WITH S.S. ANCHOR BOLTS DRILLED TO MANHOLE WALLS, 12" EACH SIDE OF PIPE JOINTS AND AT MIDPOINT OF EACH PIPE SECTION.

NOTE: NON-SHRINK GROUT SHALL BE RESISTANT TO SANITARY SEWER ENVIRONMENT.

D. I. P. 90° BEND

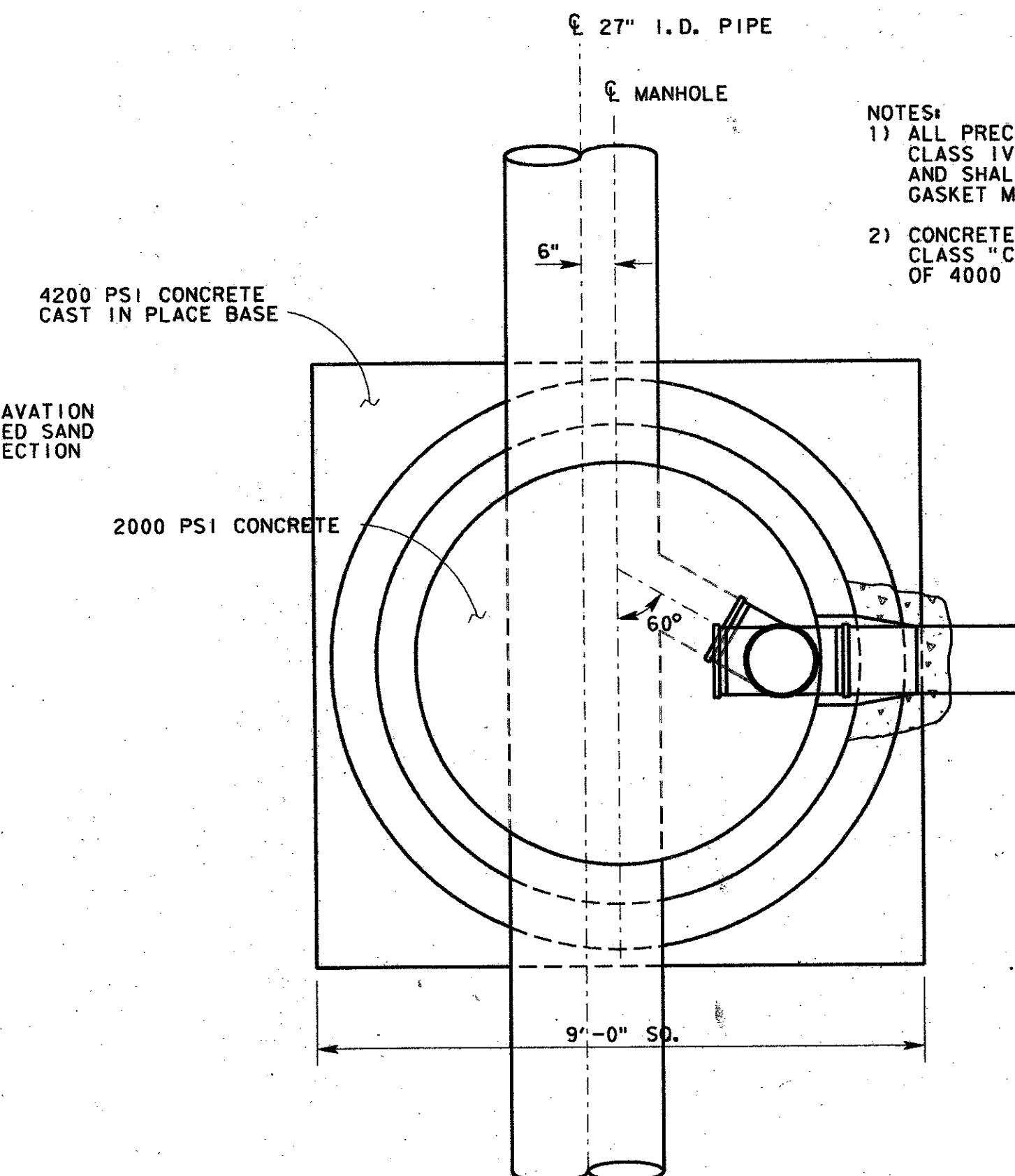
6' DIA. DROP CONNECTION MANHOLE

STANDARD PRECAST 22" CAST IRON FRAME AND COVER, ASTM 478 FOR H-20 LOADING. (NEENAH R-5901-F OR APPROVED EQUAL) TO BE CAST INTO CONCRETE LANDING BY MANUFACTURER. MANHOLE SHALL BE CAST INTO LANDING SUCH THAT IT LINES DIRECTLY UP WITH THE UPPER MANHOLE OPENING EITHER ECCENTRIC OR CONCENTRIC ALIGNMENT.

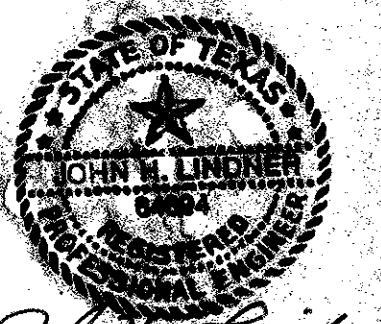
COAT UNDERSIDE OF INTERMEDIATE LANDING WITH 80 MILS COAL TAR EPOXY.

SEE TYP MH STRUCTURE RISER DETAIL, THIS SHEET

STANDARD INTERMEDIATE MANHOLE LANDING



- NOTES:
- 1) ALL PRECAST CONCRETE SECTIONS SHALL BE CLASS IV AND MEET ASTM C-478 REQUIREMENTS AND SHALL BE FITTED WITH A NEOPRENE O-RING GASKET MEETING ASTM C-433.
 - 2) CONCRETE FOR MANHOLE FOUNDATIONS SHALL BE CLASS "C" WITH A 28-DAY COMPRESSIVE STRENGTH OF 4000 PSI.



John H. Lindner
7/22/94

4				
3				
2				
1				
NO.	DATE	REVISION	APPROV.	
TOWN OF ADDISON, TEXAS				
MARSH LANE SEWER INTERCEPTOR				
SANITARY SEWER DETAILS				
()				
Carter & Burgess Consultants in Engineering, Architecture, Planning and the Environment CARTER & BURGESS, INC. 7905 ELMBROOK DRIVE, SUITE 200 DALLAS, TX 75247-4861				
Unit	Scale	1" = 2'	Date	07-22-94
Designed	D. Deseri	Checked	J. Lindner	Job No. 93315401D
Drawn	B. Soweis	Approved	J. Lindner	Sheet 28 of 32